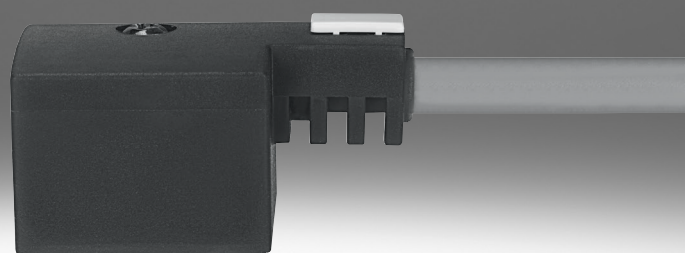


Connecting cable KMC

FESTO



Type code

001	Series
KMC	Connecting cable for valves, socket type A, EN 175301-803
002	Variant
1	Variant 1
003	Rated operating voltage
24	24 V DC
24DC	24 V DC
230AC	230 V AC

004	Cable length [m]
2.5	2.5
5	5
10	10
005	Display
	No display
LED	LED signal status, DC

Datasheet

General technical data

Rated operating voltage	24 V DC	230 V AC
Electrical connection	Socket, Type A	
Type of mounting	On solenoid valve via M3 central screw	
Switching status indication	LED	–
Mounting position	optional	

Technical data – Electrical components

Rated operating voltage	24 V DC	230 V AC
Nominal operating voltage DC	24 V	–
Nominal operating voltage AC	–	230 V
Reverse polarity protection	For all electrical connections	
Protective conductor connection	Available	

Technical data – Cable

Cable diameter	6 mm
Cable structure	3 x 0.75 mm ²

Materials

Material housing	PC
Material electrical contact	Bronze
Material cable sheath	PVC
LABS (PWIS) conformity	VDMA24364-B2-L

Operating and environmental conditions

Rated operating voltage	24 V DC	230 V AC
Ambient temperature	-20 ... 80°C	
Corrosion resistance class CRC ¹⁾	1 - Low corrosion stress	
CE mark (see declaration of conformity) ²⁾	In accordance with EU RoHS Directive	To EU Low Voltage Directive In accordance with EU RoHS Directive
CE marking (see declaration of conformity)	To UK RoHS instructions	To UK RoHS instructions To UK regulations for electrical equipment
Degree of protection	IP67; To IEC 60529	
Maritime classification	–	See certificate

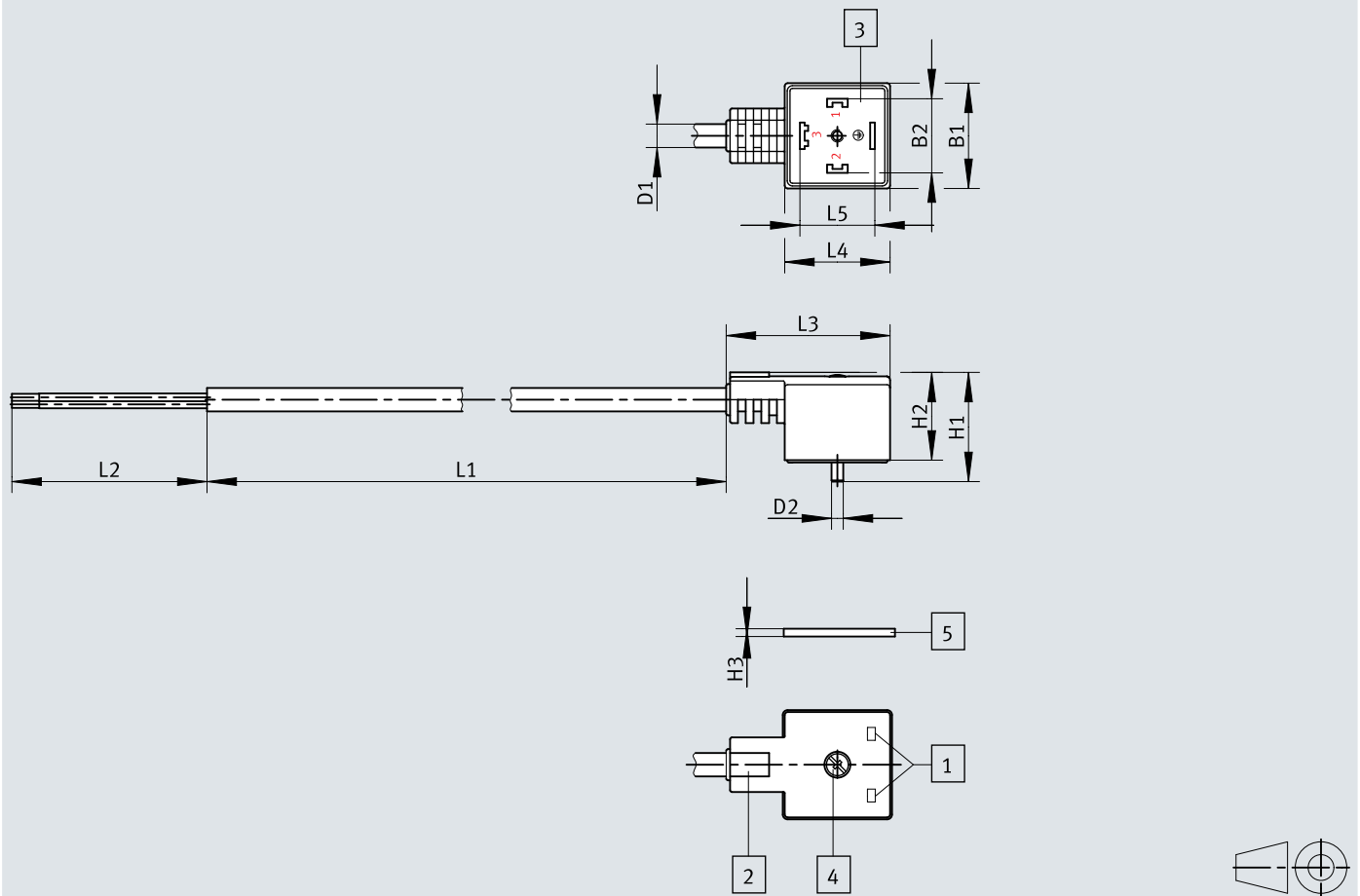
1) More information www.festo.com/x/topic/crc

2) More information www.festo.com/catalogue/.../Support/Downloads.

Dimensions

Dimensions – Connecting cable KMC

Download CAD data www.festo.com



- [1] LED illuminated area only with plug socket with cable KMC-1-24...
- [2] Inscription area
- [3] Connection diagram for plug to DIN EN 175301-803 type A
- [4] Retaining screw M3 captive
- [5] Captive retaining screw

	B1	B2	D1	D2	H1	H2	H3	L1	L2	L3	L4	L5
		±0,1	∅ ±0,15						±5			±0,1
KMC-1-...-2,5-...	27	18	6	M3	27,5	22,5	1,5	2500	50	42	27	18
KMC-1-...-5-...								5000				
KMC-1-...-10-...								10000				

Ordering data

Ordering data					
Rated operating voltage	Switching status indication	Cable length	Product weight	Part no.	Type
24 V DC	LED	10 m	620 g	193459	KMC-1-24-10-LED
		2.5 m	170 g	30931	KMC-1-24DC-2,5-LED
		5 m	320 g	30933	KMC-1-24DC-5-LED
230 V AC		2.5 m	170 g	30932	KMC-1-230AC-2,5
		5 m	320 g	30934	KMC-1-230AC-5