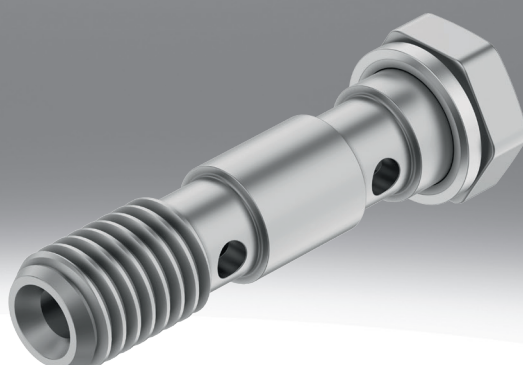


Ring piece and hollow bolt LK, TK, VT

FESTO



Characteristics

At a glance

Ring piece and hollow bolt LK, TK, VT

- Multiple distributor consisting of hollow bolt VT and ring piece LK or TK
- With two to six outlets and one common air feed
- Operating medium: compressed air, vacuum
- Hollow bolt material: Chromated steel;

Datasheet

General technical data			
Short type code	LK	TK	VT
Pneumatic connection, port 1	Male thread M5 Male thread G1/8 Male thread G1/4 Male thread G3/8 G1/8 G1/4 G3/8	Male thread G1/8 Male thread G1/4	Male thread M5 Male thread G1/8 Male thread G1/4 Male thread G3/8
Pneumatic connection, port 2	Female thread G1/8 Female thread G1/4 Female thread G3/8 For barbed fitting I.D. 3 mm with nut For barbed fitting inside diameter of 4 mm with nut For barbed fitting inside diameter of 6 mm with nut	For barbed fitting inside diameter of 4 mm with nut For barbed fitting inside diameter of 6 mm with nut	Female thread G1/8 For barbed fitting I.D. 3 mm with nut For barbed fitting inside diameter of 4 mm with nut For barbed fitting inside diameter of 6 mm with nut
Maritime classification ¹⁾	See certificate		–

1) More information [www.festo.com/catalogue/LK or .../TK](http://www.festo.com/catalogue/LK%20or%20TK%20-%20Support/Downloads) → Support/Downloads.

Operating and environmental conditions			
Short type code	LK	TK	VT
Operating pressure complete temperature range	0 ... 10 bar		–
Operating medium	–	Compressed air to ISO 8573-1:2010 [7:::]	–
Note on operating and pilot medium	–	Lubricated operation possible (in which case lubricated operation will always be required)	–
Maritime classification ¹⁾	See certificate		–

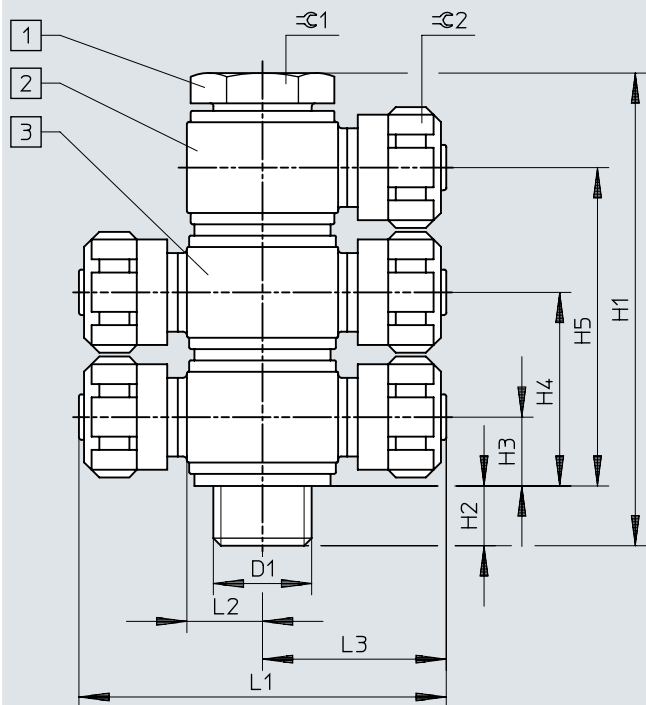
1) More information [www.festo.com/catalogue/LK or .../TK](http://www.festo.com/catalogue/LK%20or%20TK%20-%20Support/Downloads) → Support/Downloads.

Material specifications			
Short type code	LK	TK	VT
Material hollow bolt	–		Steel, chromed
Note on materials	RoHS-compliant		
LABS (PWIS) conformity	VDMA24364-B1/B2-L		VDMA24364-C1-L

Dimensions

Dimensions – Multiple distributor

Download CAD data www.festo.com




- [1] Hollow bolt VT
- [2] Ring piece LK
- [3] Ring piece TK

Dimensions


		D1	H1	H2	H3	H4	H5	L1	L2	L3	⌀G1	⌀G2	
VT-M5-2	LK-M5-PK-3	M5	27,3	4	5,2	15,1	-	-	5	16,1	7	8	
	32,2							-					
VT-M5-3	LK-M5-PK-3		37,1	3,9	5,2	15,1	25	-	5	16,1	7	8	
	32,2							-					
VT-1/8-2-PK-3	LK-1/8-PK-3	G1/8	32,7	5,9	6,1	16,7	-	-	8	19,1	13	8	
	TK-1/8-PK-3							38,2	-				
VT-1/8-3-PK-3	LK-1/8-PK-3		43,3	5,9	6,1	16,7	27,3	-	8	19,1	13	8	
	TK-1/8-PK-3							38,2	-				
VT-1/8-2	LK-1/8-PK-4		44,8	6	9,1	25,7	-	-	8	22,2	13	12	
	TK-1/8-PK-4							44,4	-				
	LK-1/8-PK-6							-	8	22,3		14	
	TK-1/8-PK-6							44,6	-				
VT-1/8-3	LK-1/8-PK-4	61,2	5,8	9,1	25,7	42,3	-	8	22,2	13	12		
	TK-1/8-PK-4						44,4	-					
	LK-1/8-PK-6						-	8	22,3		14		
	TK-1/8-PK-6						44,6	-					
VT-1/4-2	LK-1/4-PK-4	G1/4	45,2	6,6	9,2	25,4	-	-	10	24,2	17	12	
	TK-1/4-PK-4			48,4	-								
	LK-1/4-PK-6		6,2	9,3	25,7	-	10	24,3	14				
	TK-1/4-PK-6		48,6	-									
VT-1/4-3	LK-1/4-PK-4		62,5	6,7	9,2	25,4	41,6	-	10	24,2	17	12	
	TK-1/4-PK-4							48,4	-				
	LK-1/4-PK-6			6,1	9,3	25,7	42,1	-	10	24,3		14	
	TK-1/4-PK-6			48,6	-								
VT-3/8-2	LK-3/8-PK-6	G3/8	47,5	7,5	9,3	25,7	-	-	12,5	26,8	22	14	
	TK-3/8-PK-6							53,6	-				
VT-3/8-3	LK-3/8-PK-6		63,9	7,5	9,3	25,7	42,1	-	12,5	26,8		22	14
	TK-3/8-PK-6							53,6	-				

Ordering data

Ordering data – hollow bolt VT

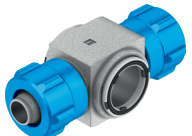
	Pneumatic connection, port 1	Pneumatic connection, port 2	Outlets	Part no.	Type
			2 outlets	9179	VT-3/8-2-3/8
				9177	VT-1/4-2-1/4
	Male thread M5	For barbed fitting I.D. 3 mm with nut		206145	VT-M5-2
	Male thread G1/8		3 outlets	4596	VT-1/8-3
			2 outlets	4593	VT-1/8-2-PK-3
		Female thread G1/8, For barbed fitting inside diameter of 4 mm with nut, For barbed fitting inside diameter of 6 mm with nut		206146	VT-1/8-2
	Male thread G1/4		3 outlets	2335	VT-1/4-3
			2 outlets	206147	VT-1/4-2
	Male thread G3/8		3 outlets	2336	VT-3/8-3
			2 outlets	206148	VT-3/8-2

Ordering data – ring piece LK

	Pneumatic connection, port 1	Pneumatic connection, port 2	Part no.	Type ¹⁾	
	Male thread M5	For barbed fitting I.D. 3 mm with nut	4475	LK-M5-PK-3	
	Male thread G1/8			4597	LK-1/8-PK-3
			For barbed fitting inside diameter of 4 mm with nut	6280	LK-1/8-PK-4-KU
			For barbed fitting inside diameter of 6 mm with nut	4476	LK-1/8-PK-4
				4477	LK-1/8-PK-6
	Male thread G1/4		For barbed fitting inside diameter of 4 mm with nut	6281	LK-1/8-PK-6-KU
			For barbed fitting inside diameter of 6 mm with nut	4478	LK-1/4-PK-4
				6282	LK-1/4-PK-4-KU
	Male thread G3/8		For barbed fitting inside diameter of 6 mm with nut	4479	LK-1/4-PK-6
				6283	LK-1/4-PK-6-KU
	G1/8	Female thread G1/8	4480	LK-3/8-PK-6	
G1/4	Female thread G1/4	9181	LK-1/8		
G3/8	Female thread G3/8	9173	LK-1/4		
		9175	LK-3/8		

1) LK: Die-cast zinc; LK-...-KU: POM

Ordering data – ring piece TK

	Pneumatic connection, port 1	Pneumatic connection, port 2	Part no.	Type ¹⁾
	Male thread G1/8	For barbed fitting inside diameter of 4 mm with nut	6284	TK-1/8-PK-4-KU
		For barbed fitting inside diameter of 6 mm with nut	6285	TK-1/8-PK-6-KU
	Male thread G1/4	For barbed fitting inside diameter of 4 mm with nut	6286	TK-1/4-PK-4-KU
		For barbed fitting inside diameter of 6 mm with nut	6287	TK-1/4-PK-6-KU

1) TK: Die-cast zinc; TK-...-KU: POM