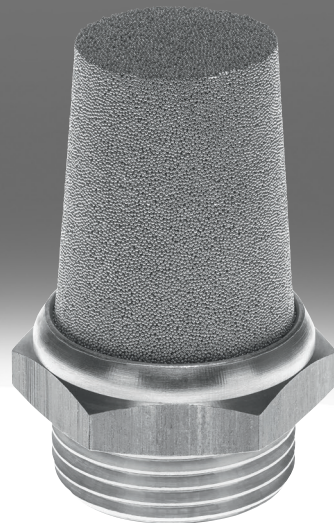


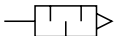
# Silencer AMTE

**FESTO**



### Characteristics

#### At a glance



High-temperature resistant silencer in metal with noise level reduction to 71 ... 95 dB(A).

- Suitable for noise reduction at the exhaust ports of pneumatic systems
- Long or short design
- Operating medium: compressed air
- High temperature resistance up to 80 °C
- Slim overall width

Note: Clean silencers with paraffin (not with petrol or trichloroethylene).

## Type code

001	Series
AMTE	Silencer
002	Product version
M	Mainly metal
003	Design type
	Short
L	Long
004	Additional features
H	Hexagon

005	Pneumatic connection
G1	G1
G18	G1/8
G14	G1/4
G12	G1/2
G38	G3/8
G34	G3/4
M3	M3
M5	M5
N18	1/8 NPT
N14	1/4 NPT
N12	1/2 NPT
N38	3/8 NPT
U10	10-32 UNF-2A

## Datasheet

### Technical data – short version

Pneumatic connection	M5	G1/8	G1/4	G3/8	G1/2
Mounting position	optional				
Sound pressure level <sup>1)</sup>	71 dB(A)	92 dB(A)	95 dB(A)	92 dB(A)	
Flow rate to atmosphere <sup>2)</sup>	91 l/min	615 l/min	1,000 l/min	1,545 l/min	2,745 l/min
Operating pressure	0 ... 1 MPa				
Operating pressure	0 ... 10 bar				
Operating pressure	0 ... 145 psi				
Operating medium	Compressed air to ISO 8573-1:2010 [7:-:-]				
Note on operating and pilot medium	Lubricated operation possible				
Ambient temperature	-40 ... 80°C				
Corrosion resistance class CRC <sup>3)</sup>	1 - Low corrosion stress				
Material screwed plug	Brass				
Material shock absorber insert	Bronze				
Note on materials	RoHS-compliant				
LABS (PWIS) conformity	VDMA24364-B1/B2-L				

1) Measured at 6 bar with respect to atmosphere at a distance of 1 m.

2) Measured at p1 = 6 bar.

3) More information [www.festo.com/x/topic/crc](http://www.festo.com/x/topic/crc)

### Technical data – long version

Pneumatic connection	M3	M5	G1/8	G1/4	G3/8	G1/2	G3/4	G1
Mounting position	optional							
Sound pressure level <sup>1)</sup>	55 dB(A)	72 dB(A)	76 dB(A)	83 dB(A)	82 dB(A)	88 dB(A)	85 dB(A)	88 dB(A)
Flow rate to atmosphere <sup>2)</sup>	95 l/min	255 l/min	1,735 l/min	3,140 l/min	5,430 l/min	10,500 l/min	12,400 l/min	17,235 l/min
Operating pressure	0 ... 1 MPa							
Operating pressure	0 ... 10 bar							
Operating pressure	0 ... 145 psi							
Operating medium	Compressed air to ISO 8573-1:2010 [7:-:-]							
Note on operating and pilot medium	Lubricated operation possible							
Ambient temperature	-40 ... 80°C							
Corrosion resistance class CRC <sup>3)</sup>	1 - Low corrosion stress							
Material screwed plug	Brass							
Material shock absorber insert	Bronze							
Note on materials	RoHS-compliant							
LABS (PWIS) conformity	VDMA24364-B1/B2-L							

1) Measured at 6 bar with respect to atmosphere at a distance of 1 m.

2) Measured at p1 = 6 bar.

3) More information [www.festo.com/x/topic/crc](http://www.festo.com/x/topic/crc)

## Datasheet

Technical data – version NPT					
Pneumatic connection	10-32 UNF-2A	1/8 NPT	1/4 NPT	3/8 NPT	1/2 NPT
Mounting position	optional				
Sound pressure level <sup>1)</sup>	71 dB(A)	77 dB(A)	82 dB(A)	83 dB(A)	85 dB(A)
Flow rate to atmosphere <sup>2)</sup>	260 l/min	1,615 l/min	3,080 l/min	5,365 l/min	9,240 l/min
Operating pressure	0 ... 1 MPa				
Operating pressure	0 ... 10 bar				
Operating pressure	0 ... 145 psi				
Operating medium	Compressed air to ISO 8573-1:2010 [7:-:-]				
Note on operating and pilot medium	Lubricated operation possible				
Ambient temperature	-40 ... 80°C				
Corrosion resistance class CRC <sup>3)</sup>	1 - Low corrosion stress				
Material screwed plug	Brass				
Material shock absorber insert	Bronze				
Note on materials	RoHS-compliant				
LABS (PWS) conformity	VDMA24364-B2-L				

1) Measured at 6 bar with respect to atmosphere at a distance of 1 m.

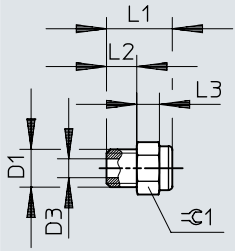
2) Measured at p1 = 6 bar.

3) More information [www.festo.com/x/topic/crc](http://www.festo.com/x/topic/crc)

## Dimensions

Dimensions – Short version

Download CAD data → [www.festo.com](http://www.festo.com)

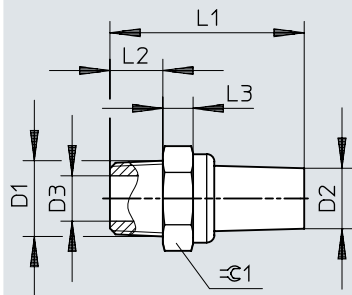


	D1	D3 ∅	L1 ±0,5	L2 ±0,1	L3	∅ 1 -0,2
AMTE-M-H-M5	M5	2,5	8,7	4	3	6
AMTE-M-H-G18	G1/8	6,5	11,8	5,5	3,5	12
AMTE-M-H-G14	G1/4	9	13,8	6,5	4	15
AMTE-M-H-G38	G3/8	12	16,5	7,5	6	19
AMTE-M-H-G12	G1/2	15	19	10	6	24

## Dimensions

### Dimensions – Long version

Download CAD data → [www.festo.com](http://www.festo.com)

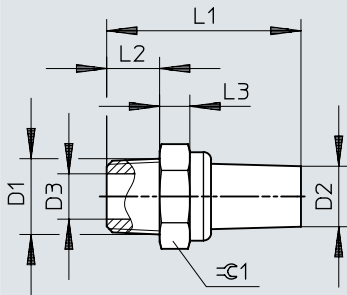


	D1	D2 ∅ ±0,5	D3 ∅	L1 ±1	L2 ±0,1	L3	≈C1 -0,2
AMTE-M-LH-M3	M3	2	1,5	14	3	2	4
AMTE-M-LH-M5	M5	3	2,5	19,8	4	3	6
AMTE-M-LH-G18	G1/8	8	6,5	23,7	5,5	3,5	12
AMTE-M-LH-G14	G1/4	10	9	29	6,5	4	15
AMTE-M-LH-G38	G3/8	12	12	41	7,5	6	19
AMTE-M-LH-G12	G1/2	16	15	46,5	10	6	24
AMTE-M-LH-G34	G3/4	20,5	20	50	10	6	30
AMTE-M-LH-G1	G1	20,5	26	59	10	6	36

## Dimensions

### Dimensions – Version NPT


Download CAD data → [www.festo.com](http://www.festo.com)




	D1	D2 ∅ +0,5	D3 ∅	L1 ±1	L2 ±0,1	L3	≻C1 -0,2
AMTE-M-LH-U10	10-32 UNF-2A	3	2,5	20,3	4	3,5	6
AMTE-M-LH-N18	1/8 NPT	8	6	25,7	7	4	12
AMTE-M-LH-N14	1/4 NPT	10	9	34,5	11	5	15
AMTE-M-LH-N38	3/8 NPT	12	11,5	43,2	11	5,5	19
AMTE-M-LH-N12	G3/8	16	15	49	13	5,5	24




## Ordering data

Short version						
	Pneumatic connection	Flow rate to atmosphere	Size of pack <sup>1)</sup>	Product weight	Part no.	Type
	M5	91 l/min	20	1.1 g	★ 1206621	AMTE-M-H-M5
	G1/8	615 l/min		5 g	★ 1206622	AMTE-M-H-G18
	G1/4	1,000 l/min		9.5 g	★ 1206623	AMTE-M-H-G14
	G3/8	1,545 l/min	10	17 g	★ 1206624	AMTE-M-H-G38
	G1/2	2,745 l/min		30 g	★ 1206625	AMTE-M-H-G12

1) Quantity

Long version						
	Pneumatic connection	Flow rate to atmosphere	Size of pack <sup>1)</sup>	Product weight	Part no.	Type
	M3	95 l/min	20	0.4 g	1231120	AMTE-M-LH-M3
	M5	255 l/min		1.5 g	★ 1205858	AMTE-M-LH-M5
	G1/8	1,735 l/min		7.5 g	★ 1205860	AMTE-M-LH-G18
	G1/4	3,140 l/min	10	13 g	★ 1205861	AMTE-M-LH-G14
	G3/8	5,430 l/min		26 g	★ 1205862	AMTE-M-LH-G38
	G1/2	10,500 l/min		43 g	★ 1205863	AMTE-M-LH-G12
	G3/4	12,400 l/min		80 g	1205864	AMTE-M-LH-G34
	G1	17,235 l/min		115 g	1205865	AMTE-M-LH-G1

1) Quantity

Version NPT						
	Pneumatic connection	Flow rate to atmosphere	Size of pack <sup>1)</sup>	Product weight	Part no.	Type
	10-32 UNF-2A	260 l/min	20	1.7 g	1206994	AMTE-M-LH-U10
	1/8 NPT	1,615 l/min		9 g	1206989	AMTE-M-LH-N18
	1/4 NPT	3,080 l/min		17 g	1206990	AMTE-M-LH-N14
	3/8 NPT	5,365 l/min	10	29 g	1206991	AMTE-M-LH-N38
	1/2 NPT	9,240 l/min		46 g	1206992	AMTE-M-LH-N12

1) Quantity