
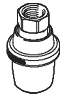


Hand slide valves W/VBOW



Hand slide valves W/VBOW

Product range overview

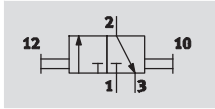
Version	Valve function	Version	Type	Pneumatic connection 1	Pneumatic connection 2	qnN [l/min]	→ Page/ Internet
Hand slide valves	3/2-way, bi-stable		W	M5, G1/8, G1/4, G3/8, G1/2, G3/4	M5, G1/8, G1/4, G3/8, G1/2, G3/4	120 ... 6,800	3
			VBOW	G1/4	G1/4	1,675	5

Hand slide valves W

Technical data

FESTO

Function



Flow rate

120 ... 6,800 l/min

Temperature range

-10 ... +60 °C

Pressure

-0.95 ... +10 bar

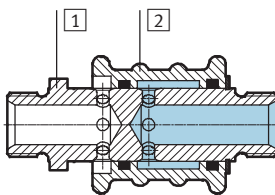


General technical data						
Pneumatic connection 1	M5	G1/8	G1/4	G3/8	G1/2	G3/4
Pneumatic connection 2	M5	G1/8	G1/4	G3/8	G1/2	G3/4
Nominal size [mm]	2.5	3	7	9	12	18
Design	Sleeve valve					
Valve function	3/2-way, bi-stable					
Actuation type	Manual					
Actuating force [N]	10	10	20	20	20	30
Type of mounting	Screw-in In-line installation					
Mounting position	Any					
Sealing principle	Soft					
Type of control	Direct					
Direction of flow	Reversible					

Operating and environmental conditions						
Pneumatic connection 1	M5	G1/8	G1/4	G3/8	G1/2	G3/4
Operating pressure [bar]	-0.95 ... +8	-0.95 ... +10				
Operating medium	Filtered compressed air, lubricated or unlubricated, grade of filtration 40 µm Vacuum					
Ambient temperature [°C]	-10 ... +60					
Temperature of medium [°C]	-10 ... +60					

Materials

Sectional view



Hand slide valve		
1	Threaded plug	Anodised wrought aluminium alloy
2	Housing	Brass
-	Seals	NBR

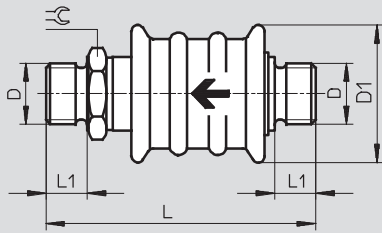
Hand slide valves W

Technical data

FESTO

Dimensions

Download CAD Data → www.festo.com/us/cad



← Flow direction

Type	Connection D	D1 ∅	L	L1	⌀
W-3-M5	M5	20	46.4	5.0	9
W-3-1/8	G1/8	24	51.3	6.5	14
W-3-1/4	G1/4	35	70.4	8.0	17
W-3-3/8	G3/8	45	79.4	9.0	27
W-3-1/2	G1/2	45	82.4	10.5	27
W-3-3/4	G3/4	50	99.0	12.0	32

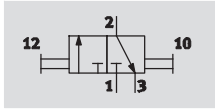
Ordering data

	Pneumatic connection		Standard nominal flow rate qnN [l/min]	Weight [g]	Part No.	Type
	1	2				
	M5	M5	120	25	4451	W-3-M5
	G1/8	G1/8	600	40	2339	W-3-1/8
	G1/4	G1/4	1,000	110	2340	W-3-1/4
	G3/8	G3/8	1,400	280	2341	W-3-3/8
	G1/2	G1/2	2,000	300	2342	W-3-1/2
	G3/4	G3/4	6,800	400	4052	W-3-3/4

Hand slide valves VBOW

Technical data

Function



Flow rate

1,675 l/min

Temperature range

-10 ... +80 °C

Pressure

-0.95 ... +12 bar



General technical data	
Pneumatic connection 1, 2	G $\frac{1}{4}$
Nominal size [mm]	8.4
Design	Sleeve valve
Valve function	3/2-way, bi-stable
Actuation type	Manual
Actuating force [N]	45
Type of mounting	Screw-in In-line installation
Mounting position	Any
Sealing principle	Soft
Type of control	Direct
Direction of flow	Reversible
C value [l/(s*bar)]	7.036
b value	0.330

Operating and environmental conditions	
Operating pressure [bar]	-0.95 ... +12
Operating medium	Filtered compressed air, lubricated or unlubricated, grade of filtration 40 µm Vacuum
Ambient temperature [°C]	-10 ... +80
Temperature of medium [°C]	-10 ... +80
Corrosion resistance class CRC ¹⁾	2

1) Corrosion resistance class 2 according to Festo standard 940 070
Components subject to moderate corrosion stress. Externally visible parts with primarily decorative surface requirements which are in direct contact with a normal industrial environment or media such as coolants or lubricating agents.

Materials

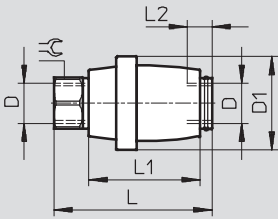
Sectional view		
	Hand slide valve	
	1 Threaded plug	Anodised wrought aluminium alloy
	2 Housing	Anodised wrought aluminium alloy
	3 Grip ring	PBT
	- Seals	NBR
Note on materials		RoHS-compliant

Hand slide valves VBOW

Technical data

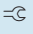
Dimensions

Download CAD Data → www.festo.com/us/cad

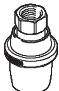


Note

Grip ring marked with direction arrow for the flow direction.

Type	Connection D	D1 ∅	L	L1	L2	
VBOW-32-G14	G1/4	31	52.5	37	13	17

Ordering data

	Pneumatic connection		Standard nominal flow rate qnN [l/min]	Weight [g]	Part No. Type
	1	2			
	G1/4	G1/4	1,675	35	1302994 VBOW-32-G14

Product Range and Company Overview

A Complete Suite of Automation Services

Our experienced engineers provide complete support at every stage of your development process, including: conceptualization, analysis, engineering, design, assembly, documentation, validation, and production.



Custom Automation Components
Complete custom engineered solutions



Custom Control Cabinets
Comprehensive engineering support and on-site services



Complete Systems
Shipment, stocking and storage services

The Broadest Range of Automation Components

With a comprehensive line of more than 30,000 automation components, Festo is capable of solving the most complex automation requirements.



Electromechanical
Electromechanical actuators, motors, controllers & drives



Pneumatics
Pneumatic linear and rotary actuators, valves, and air supply



PLCs and I/O Devices
PLC's, operator interfaces, sensors and I/O devices

Supporting Advanced Automation... As No One Else Can!

Festo is a leading global manufacturer of pneumatic and electromechanical systems, components and controls for industrial automation, with more than 12,000 employees in 56 national headquarters serving more than 180 countries. For more than 80 years, Festo has continuously elevated the state of manufacturing with innovations and optimized motion control solutions that deliver higher performing, more profitable automated manufacturing and processing equipment. Our dedication to the advancement of automation extends beyond technology to the education and development of current and future automation and robotics designers with simulation tools, teaching programs, and on-site services.

Quality Assurance, ISO 9001 and ISO 14001 Certifications

Festo Corporation is committed to supply all Festo products and services that will meet or exceed our customers' requirements in product quality, delivery, customer service and satisfaction.

To meet this commitment, we strive to ensure a consistent, integrated, and systematic approach to management that will meet or exceed the requirements of the ISO 9001 standard for Quality Management and the ISO 14001 standard for Environmental Management.



© Copyright 2008, Festo Corporation. While every effort is made to ensure that all dimensions and specifications are correct, Festo cannot guarantee that publications are completely free of any error, in particular typing or printing errors. Accordingly, Festo cannot be held responsible for the same. For Liability and Warranty conditions, refer to our "Terms and Conditions of Sale", available from your local Festo office. All rights reserved. No part of this publication may be reproduced, distributed, or transmitted in any form or by any means, electronic, mechanical, photocopying or otherwise, without the prior written permission of Festo. All technical data subject to change according to technical update.



Printed on recycled paper at New Horizon Graphic, Inc., FSC certified as an environmentally friendly printing plant.

Festo North America

Festo Regional Contact Center

5300 Explorer Drive
Mississauga, Ontario L4W 5G4
Canada

USA Customers:

For ordering assistance,

Call: 1.800.99.FESTO (1.800.993.3786)

Fax: 1.800.96.FESTO (1.800.963.3786)

Email: customer.service@us.festo.com

For technical support,

Call: 1.866.GO.FESTO (1.866.463.3786)

Fax: 1.800.96.FESTO (1.800.963.3786)

Email: product.support@us.festo.com

Canadian Customers:

Call: 1.877.GO.FESTO (1.877.463.3786)

Fax: 1.877.FX.FESTO (1.877.393.3786)

Email: festo.canada@ca.festo.com

USA Headquarters

Festo Corporation
395 Moreland Road
P.O. Box 18023
Hauppauge, NY 11788, USA
www.festo.com/us

USA Sales Offices

Appleton

North 922 Tower View Drive, Suite N
Greenville, WI 54942, USA

Boston

120 Presidential Way, Suite 330
Woburn, MA 01801, USA

Chicago

1441 East Business Center Drive
Mt. Prospect, IL 60056, USA

Dallas

1825 Lakeway Drive, Suite 600
Lewisville, TX 75057, USA

Detroit – Automotive Engineering Center

2601 Cambridge Court, Suite 320
Auburn Hills, MI 48326, USA

New York

395 Moreland Road
Hauppauge, NY 11788, USA

Silicon Valley

4935 Southfront Road, Suite F
Livermore, CA 94550, USA

United States



USA Headquarters, East: Festo Corp., 395 Moreland Road, Hauppauge, NY 11788

Phone: 1.631.435.0800; Fax: 1.631.435.8026;

Email: info@festo-usa.com

www.festo.com/us

Canada



Headquarters: Festo Inc., 5300 Explorer Drive, Mississauga, Ontario L4W 5G4

Phone: 1.905.624.9000; Fax: 1.905.624.9001;

Email: festo.canada@ca.festo.com

www.festo.ca

Mexico



Headquarters: Festo Pneumatic, S.A., Av. Ceylán 3, Col. Tequesquahuac,
54020 Tlalneantla, Edo. de México

Phone: 011 52 [55] 53 21 66 00; Fax: 011 52 [55] 53 21 66 65;

Email: festo.mexico@mx.festo.com

www.festo.com/mx

Central USA

Festo Corporation
1441 East Business
Center Drive
Mt. Prospect, IL 60056, USA
Phone: 1.847.759.2600
Fax: 1.847.768.9480



Western USA

Festo Corporation
4935 Southfront Road,
Suite F
Livermore, CA 94550, USA
Phone: 1.925.371.1099
Fax: 1.925.245.1286



Festo Worldwide

Argentina Australia Austria Belarus Belgium Brazil Bulgaria Canada Chile China Colombia Croatia Czech Republic Denmark
Estonia Finland France Germany Great Britain Greece Hong Kong Hungary India Indonesia Iran Ireland Israel Italy Japan Latvia
Lithuania Malaysia Mexico Netherlands New Zealand Norway Peru Philippines Poland Romania Russia Serbia Singapore
Slovakia Slovenia South Africa South Korea Spain Sweden Switzerland Taiwan Thailand Turkey Ukraine United States Venezuela

www.festo.com