

Vacuum gauges

FESTO



Vacuum gauges



Technical data

FESTO

Vacuum gauge VAM, EN 837-1

Function



-  Temperature range
-10 ... +60 °C
-  Pressure
-1 ... +9 bar

- Analogue display via Bourdon tube
- Vacuum gauges can be loaded up to $\frac{3}{4}$ of their full scale value under static load and up to $\frac{2}{3}$ under intermittent load conditions



General technical data			
Nominal tubing size, pressure gauge	40	63	
Type	VAM-40-V1/0	VAM-63-V1/0	VAM-63-V1/9
Pneumatic connection	R $\frac{1}{8}$	R $\frac{1}{4}$	
Operating pressure [bar]	-1 ... 0	-1 ... 0	-1 ... +9
Operating medium	Compressed air in accordance with ISO 8573-1:2010 [7:4:4]		
Note on operating/pilot medium	Operation with lubricated medium possible (in which case lubricated operation will always be required)		
Design	Bourdon tube pressure gauge		
Based on standard	EN 837-1		
Type of mounting	Can be screwed in		
Type of seal on threaded plug	Coating		
Mounting position	Any		
Connection position	Centre, rear side		
Ambient temperature [°C]	-10 ... +60		
Medium temperature [°C]	-20 ... +60		
Accuracy of measurement, class	2.5		
Factor, continuous load	0.75		
Factor, intermittent load	0.66		

Display			
Nominal tubing size, pressure gauge	40	63	
Type	VAM-40-V1/0	VAM-63-V1/0	VAM-63-V1/9
Scale	Double scale	Double scale	Double scale
	bar (outer)	bar (outer)	bar (outer)
	inchHg (inner)	inchHg (inner)	inchHg/psi (inner)
Indicating range [bar]	-1 ... 0	-1 ... 0	-1 ... +9
	[inchHg]	-30 ... 0	-30 ... 0
	[psi]	-	0 ... +130

Product weights [g]		
Nominal tubing size, pressure gauge	40	63
VAM	63	83

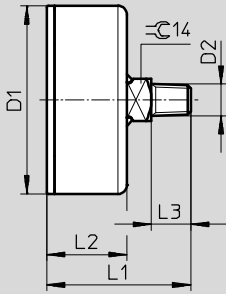
Materials	
Housing	ABS
Window shield	PS
Threaded plug	Brass
Note on materials	RoHS-compliant

Vacuum gauges

Technical data

FESTO

Dimensions



Type	D1 Ø	D2	L1	L2	L3
VAM-40	39 ±0.5	R1/8	46 ±1	26 ±0.5	12
VAM-63-V1/0	62 ±0.5	R1/4	50 ±1	29 ±0.5	13
VAM-63-V1/9	62 ±0.5	R1/4	47.5 ±1	26.5 ±0.5	13

Ordering data

Nominal tubing size, pressure gauge	Pneumatic connection	Indicating range			Part No.	Type
		[bar]	[inchHg]	[psi]		
40	R1/8	-1 ... 0	-30 ... 0	-	537810	VAM-40-V1/0-R1/8-EN
63	R1/4	-1 ... 0	-30 ... 0	-	537811	VAM-63-V1/0-R1/4-EN
		-1 ... 9	-30 ... 0	0 ... +130	537814	VAM-63-V1/9-R1/4-EN

Vacuum gauges



Technical data

FESTO

Vacuum gauge VAM, EN 837-1, with red-green range

Function



-  Temperature range
-10 ... +60 °C
-  Pressure
-1 ... 0 bar

- Analogue display via Bourdon tube
- Vacuum gauges can be loaded up to $\frac{3}{4}$ of their full scale value under static load and up to $\frac{2}{3}$ under intermittent load conditions
- The adjustable red-green range provides additional safety when monitoring compressed air



General technical data		
Nominal tubing size, pressure gauge	40	63
Type	VAM-40-V1/0-R $\frac{1}{8}$	VAM-63-V1/0-R $\frac{1}{4}$
Pneumatic connection	R $\frac{1}{8}$	R $\frac{1}{4}$
Operating pressure [bar]	-1 ... 0	
Operating medium	Compressed air in accordance with ISO 8573-1:2010 [7:4:4]	
Note on operating/pilot medium	Operation with lubricated medium possible (in which case lubricated operation will always be required)	
Design	Bourdon tube pressure gauge	
Based on standard	EN 837-1	
Type of mounting	Can be screwed in	
Type of seal on threaded plug	Coating	
Mounting position	Any	
Connection position	Centre, rear side	
Ambient temperature [°C]	-10 ... +60	
Medium temperature [°C]	-20 ... +60	
Accuracy of measurement, class	2.5	
Factor, continuous load	0.75	
Factor, intermittent load	0.66	

Display		
Nominal tubing size, pressure gauge	40	63
Type	VAM-40-V1/0-R $\frac{1}{8}$	VAM-63-V1/0-R $\frac{1}{4}$
Scale	Single scale bar	Single scale bar
Indicating range [bar]	-1 ... 0	

Product weights [g]		
Nominal tubing size, pressure gauge	40	63
Type	VAM-40-V1/0-R $\frac{1}{8}$	VAM-63-V1/0-R $\frac{1}{4}$
VAM	65	90

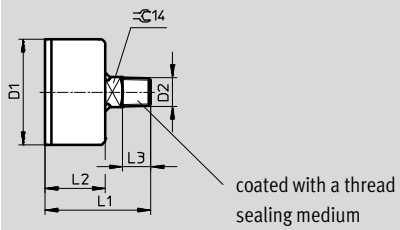
Materials	
Housing	ABS
Window shield	PS
Segment	PS
Threaded plug	Brass

Vacuum gauges

Technical data

FESTO

Dimensions



Type	D1 Ø	D2	L1	L2	L3
VAM-40-...-E-RG	39 ±0.5	R1/8	48.5 ±1	28.5 ±0.5	12
VAM-63-...-E-RG	62 ±0.5	R1/4	53 ±1	32 ±0.5	13

Ordering data

Nominal tubing size, pressure gauge	Pneumatic connection	Indicating range	Part No.	Type
		[bar]		
40	R1/8	-1 ... 0	547842	VAM-40-V1/0-R1/8-E-RG
63	R1/4	-1 ... 0	547843	VAM-63-V1/0-R1/4-E-RG

Vacuum gauges



Technical data

FESTO

Vacuum gauge FVAM, EN 837-1

Function



-  - Temperature range
-10 ... +60 °C
-  - Pressure
-1 ... 0 bar

- Analogue display via Bourdon tube
- Vacuum gauges can be loaded up to $\frac{3}{4}$ of their full scale value under static load and up to $\frac{2}{3}$ under intermittent load conditions.



General technical data		
Nominal tubing size, pressure gauge	40	63
Pneumatic connection	G $\frac{1}{8}$	G $\frac{1}{4}$
Operating pressure [bar]	-1 ... 0	-1 ... 0
Operating medium	Compressed air in accordance with ISO 8573-1:2010 [7:4:4]	
Note on operating/pilot medium	Operation with lubricated medium possible (in which case lubricated operation will always be required)	
Design	Bourdon tube pressure gauge	
Based on standard	EN 837-1	
Type of mounting	Panel mounting	
Type of seal on threaded plug	Coating	
Mounting position	Any	
Connection position	Centre, rear side	
Ambient temperature [°C]	-10 ... +60	
Medium temperature [°C]	-20 ... +60	
Accuracy of measurement, class	2.5	
Factor, continuous load	0.75	
Factor, intermittent load	0.66	

Display		
Nominal tubing size, pressure gauge	40	63
Scale	Double scale	Double scale
	bar (outer)	bar (outer)
	inchHg (inner)	inchHg (inner)
Indicating range [bar]	-1 ... 0	-1 ... 0
	[inchHg] -30 ... 0	-30 ... 0

Product weights [g]		
Nominal tubing size, pressure gauge	40	63
FVAM	81	121

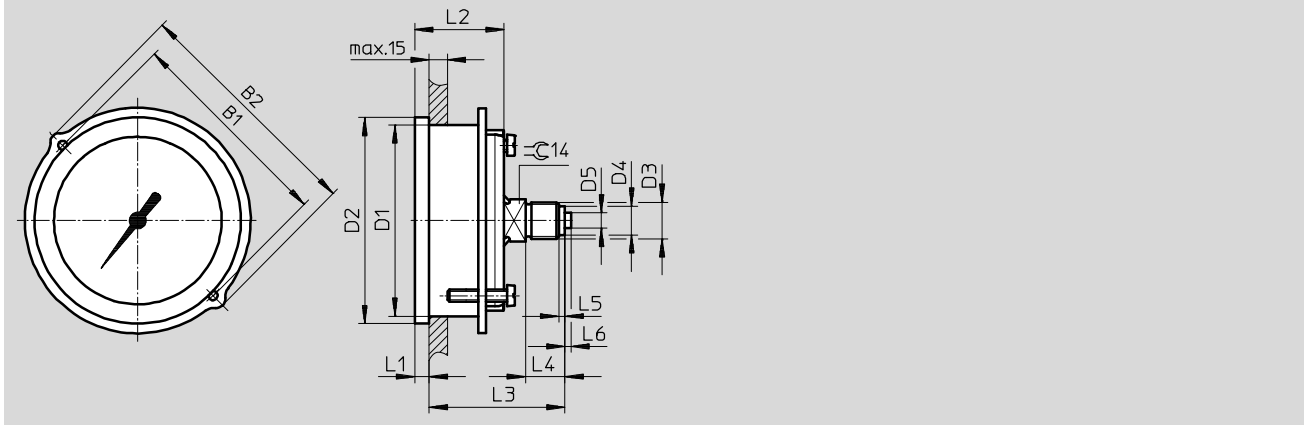
Materials	
Housing	ABS
Window shield	PMMA
Threaded plug	Brass
Note on materials	RoHS-compliant

Vacuum gauges

Technical data

FESTO

Dimensions



Type	B1	B2	D1 Ø	D2 Ø	D3	D4 Ø	D5 Ø	L1	L2	L3	L4	L5	L6
FVAM-40	48	56	40	45	G $\frac{1}{8}$	8	–	4.5	26.5	40	10	2	–
FVAM-63	70	79	63	68	G $\frac{1}{4}$	9.5	5	4.8	29.5	42.5	13	2	2

Ordering data

Nominal tubing size, pressure gauge	Pneumatic connection	Indicating range		Part No.	Type
		[bar]	[inchHg]		
40	G $\frac{1}{8}$	-1 ... 0	-30 ... 0	537812	FVAM-40-V1/0-G $\frac{1}{8}$ -EN
63	G $\frac{1}{4}$	-1 ... 0	-30 ... 0	537813	FVAM-63-V1/0-G $\frac{1}{4}$ -EN

Festo - Your Partner in Automation



1 Festo Inc.
5300 Explorer Drive
Mississauga, ON L4W 5G4
Canada

Festo Customer Interaction Center
Tel: 1 877 463 3786
Fax: 1 877 393 3786
Email: customer.service.ca@festo.com



2 Festo Pneumatic
Av. Ceylán 3,
Col. Tequesquináhuac
54020 Tlalnepantla,
Estado de México

Multinational Contact Center
01 800 337 8669
ventas.mexico@festo.com



3 Festo Corporation
1377 Motor Parkway
Suite 310
Islandia, NY 11749

Festo Customer Interaction Center
1 800 993 3786
1 800 963 3786
customer.service.us@festo.com



4 Regional Service Center
7777 Columbia Road
Mason, OH 45040

Connect with us



www.festo.com/socialmedia



www.festo.com

Subject to change