

# Cylinder, Type DSNU - Basic Version

Accessory Dimensions

## Rod clevis type SG-...

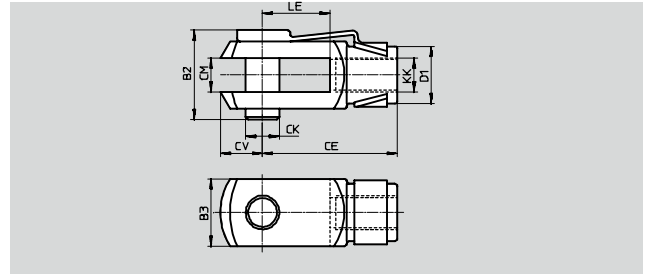
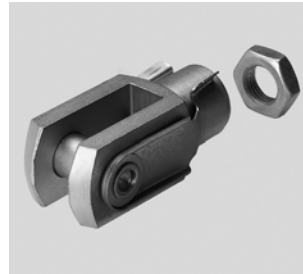
### SG-...

- Includes:
- 1 rod clevis
- 1 hinged spring pin
- 1 hex nut

The rod clevis is fitted to the piston rod thread and permits swivelling movement of the cylinder in one plane.

#### Materials:

- Rod clevis: Galvanized steel
- Nut: Galvanized steel



Type	Size [in.]	B2	B3	CE	CK ∅ H9	CM
SG-6-32	5/16, 3/8	0.43	0.31	±0.4 0.62	0.16	0.16
SG-10-32	1/2, 5/8	0.43	0.31	0.62	0.16	0.16
SG-5/16-24	3/4	0.85	0.63	1.26	0.31	0.31
SG-3/8-24	1	1.02	0.79	1.57	0.39	0.39

Type	Size [in.]	CV	D1 ∅	KK	LE	Weight [lb]
SG-6-32	5/16, 3/8	0.20	0.31	6-32 UNC-2B	±0.5 0.31	0.022
SG-10-32	1/2, 5/8	0.20	0.31	10-32 UNF-2B	0.31	0.022
SG-5/16-24	3/4	0.39	0.55	5/16-24 UNF-2B	0.63	0.110
SG-3/8-24	1	0.47	0.71	3/8-24 UNF-2B	0.79	0.220

## Rod eye type SGS-...

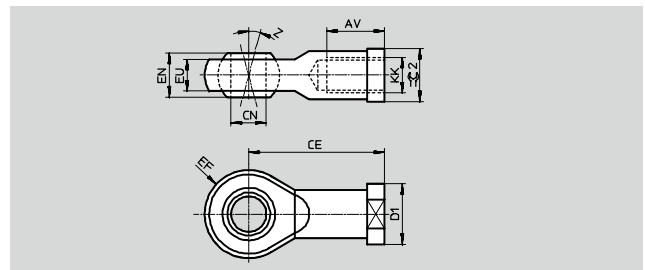
### SGS-...

- Includes:
- 1 rod eye
- 1 hex nut

The rod eyes are maintenance-free due to the combination of steel/PTFE-bronze material in the swivel bearing.

#### Materials:

- Rod eye: Galvanized steel
- Bearing cup: SnBz8 (PTFE-bronze material)
- Nut: Galvanized steel



Type	Size [in.]	AV	CE	CN ∅ H7	D1 ∅	EF
SGS-6-32	5/16, 3/8	0.39	1.06	0.20	0.43	0.35
SGS-10-32	1/2, 5/8	0.39	1.06	0.20	0.43	0.35
SGS-5/16-24	3/4	0.65	1.42	0.31	0.63	0.47
SGS-3/8-24	1	0.79	1.69	0.39	0.75	0.55

Type	Size [in.]	EN	EU	KK	Z	≈ 2 [in.]	Weight [lb]
SGS-6-32	5/16, 3/8	0.31	0.24	6-32 UNC-2B	13	0.354	0.037
SGS-10-32	1/2, 5/8	0.31	0.24	10-32 UNF-2B	13	0.433	0.055
SGS-5/16-24	3/4	0.47	0.35	5/16-24 UNF-2B	13	0.551	0.099
SGS-3/8-24	1	0.55	0.41	3/8-24 UNF-2B	13	0.669	0.154

# Festo - Your Partner in Automation



**1 Festo Inc.**  
5300 Explorer Drive  
Mississauga, ON L4W 5G4  
Canada

**Festo Customer Interaction Center**  
Tel: 1 877 463 3786  
Fax: 1 877 393 3786  
Email: [customer.service.ca@festo.com](mailto:customer.service.ca@festo.com)



**2 Festo Pneumatic**  
Av. Ceylán 3,  
Col. Tequesquináhuac  
54020 Tlalnepantla,  
Estado de México

**Multinational Contact Center**  
01 800 337 8669  
[ventas.mexico@festo.com](mailto:ventas.mexico@festo.com)



**3 Festo Corporation**  
1377 Motor Parkway  
Suite 310  
Islandia, NY 11749

**Festo Customer Interaction Center**  
1 800 993 3786  
1 800 963 3786  
[customer.service.us@festo.com](mailto:customer.service.us@festo.com)



**4 Regional Service Center**  
7777 Columbia Road  
Mason, OH 45040

Connect with us



[www.festo.com/socialmedia](http://www.festo.com/socialmedia)



[www.festo.com](http://www.festo.com)

Subject to change