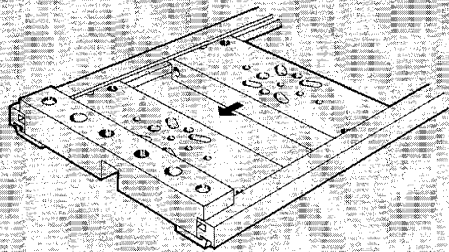


Mounting Frames

Type NRRQ-...

A maximum of 16 elements with 1n-width or 2n-width sub-bases can be mounted on these mounting frames (M5-Compact Series). The 18.90 in / 480 mm rack length can accommodate 19 in / 457 mm housings (DIN 41488). The rails may be cut to length to fit other types of mounting. Sub-bases can be inserted into the continuous slots of the mounting rails. The sub-bases are then clamped between cross bars.

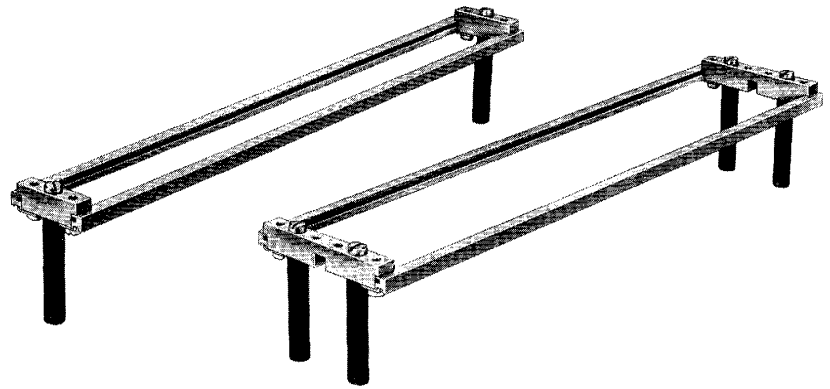


The 2n-width cross bars slots permits combining 1n-width and 2n-width components (1n = 1.75 in / 44.45 mm).

Identification Labels

To identify hardware, Order No. 6888 Type BZ-NUM-1 to 50 or Order No. 6889 BZ-NUM-51 to 100 labels are inserted into the grooves on the bottom of the mounting rails (see below).

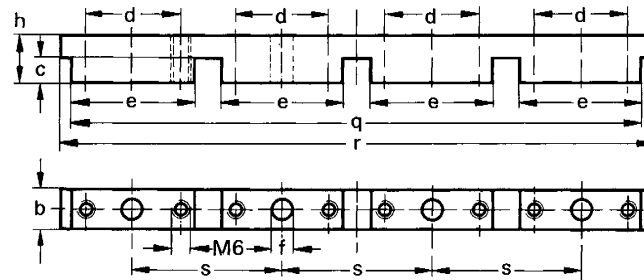
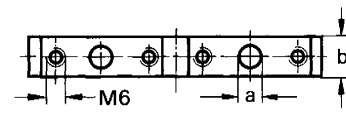
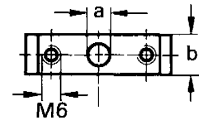
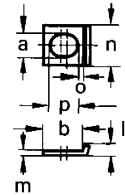
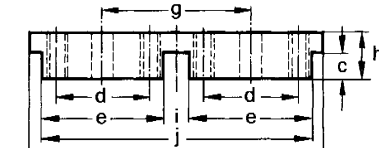
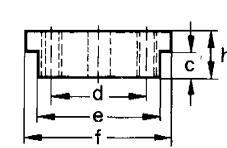
21	22	23
31	32	33
41	42	43



Cross bar, 1n-width
Type NRV-1N

Cross bar, 2n-width
Type NRV-2N

Bracket
Type NRW-12/3



Dimensions

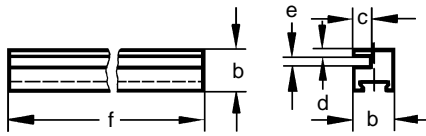
f	1.72 in / 43.7 mm	m	0.06 in / 1.5 mm
g	1.75 in / 44.5 mm	n	0.46 in / 11.8 mm
a	0.26 in / 6.6 mm	o	0.08 in / 2 mm
b	0.47 in / 12 mm	p	0.32 in / 8.1 mm
c	0.31 in / 7.8 mm	q	6.69 in / 170 mm
d	1.12 in / 28.5 mm	r	6.97 in / 177 mm
e	1.44 in / 36.5 mm	s	1.75 in / 44.45 mm
h	0.55 in / 14 mm		
i	0.31 in / 8 mm		
j	3.19 in / 81 mm		
k	3.47 in / 88.2 mm		
l	0.12 in / 3 mm		

Order Number	Item (See Page 686)	Materials	Nomenclature	Weight lb / kg
6851	NRV-1N 1	Al, diecast	Cross bar, 1n-width	0.033 / 0.015
6852	NRV-2N 2	Al, diecast	Cross bar, 2n-width	0.070 / 0.032
6771	NRV-4N -	Al, diecast	Cross bar, 4n-width	0.132 / 0.060
9363	NRQ-8-480 3	Al, anodized	Mounting rail, 18.90 in / 480 mm long	0.132 / 0.060
6772	NRW-12/3 4	Steel, galvanized	Mounting bracket	0.004 / 0.002
207679	NRB-12/60 5	Al	Support rod	0.037 / 0.017
200568	- 6	Steel, galvanized	Socket head capscrew, M6 x 18 DIN 84	0.011 / 0.005
208938	- 7	Steel, galvanized	Socket head capscrew, M6 x 12 DIN 84	0.009 / 0.004
9364	NRRQ-1N -	-	Mounting rack, 1n-width, assembled, for 16 elements	0.484 / 0.220
9365	NRRQ-2N -	-	Mounting rack, 2n-width, assembled, for 16 elements	0.693 / 0.315
Accessories for mounting of PK-3 elements				
11571	NRW-9/1.5-B	Plastic	Mounting brackets	0.002 / 0.001
204021		Steel, galvanized	Socket head capscrew, M4 x 12 DIN 84	0.004 / 0.002

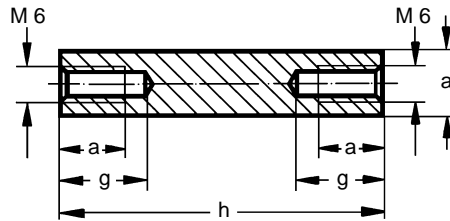
Compact 2000 / M5/2N System Valves

Mounting Frames

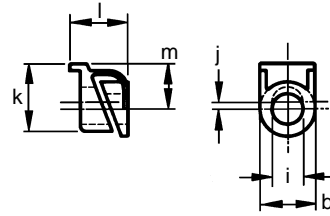
Mounting Rail
Type NRQ-8-480



Support Rod
Type NRB-12/60

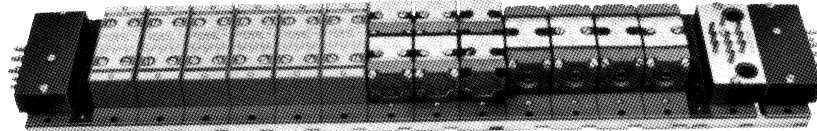


Bracket
Type NRW-9/1.5



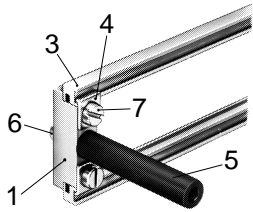
Dimensions

a	0.47 in / 12 mm	h	2.36 in / 60 mm
b	0.31 in / 8 mm	i	0.18 in / 4.5 mm
c	0.15 in / 3.8 mm	j	0.04 in / 1 mm
d	0.05 in / 1.2 mm	k	0.39 in / 10 mm
e	0.09 in / 2.4 mm	l	0.33 in / 8.4 mm
f	18.9 in / 480 mm	m	0.26 in / 6.7 mm
g	0.63 in / 16 mm		

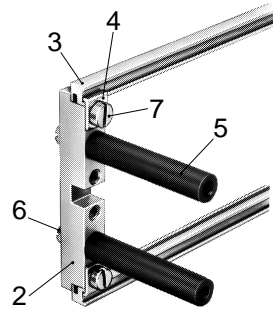


Application Example

1n-width mounting frame



2n-width mounting frame



Mounting Rail Type NRQ-8-480

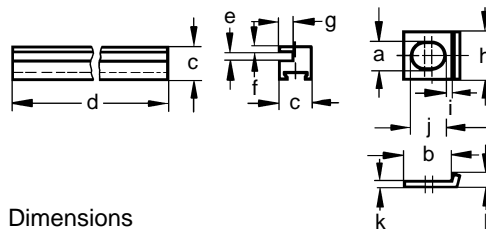
Mounting rails are essential for fastening various pneumatic elements. Two mounting rails are interlocked in corresponding n-grooves. 1n- and 2n-sub-bases may be installed in the continuous slot.

Mounting Bracket Type NRW-12/3

These brackets attach cross bars, type NRV, to mounting rails.

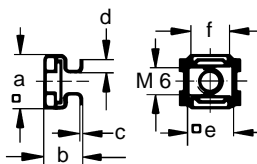
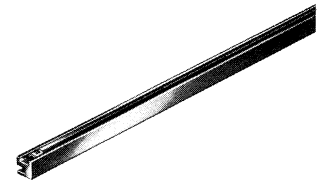
Box Nut Type NRM-M6

The box nut is inserted or attached in the square holes of the various mounting frame. The thread is M6.



Dimensions

a	0.26 in / 6.6 mm	g	0.15 in / 3.8 mm
b	0.47 in / 12 mm	h	0.46 in / 11.8 mm
c	0.31 in / 8 mm	i	0.08 in / 2 mm
d	18.9 in / 480 mm	j	0.32 in / 8.1 mm
e	0.09 in / 2.4 mm	k	0.06 in / 1.5 mm
f	0.05 in / 1.2 mm	l	0.12 in / 3 mm



Dimensions

a	0.51 in / 13 mm	d	0.09 in / 2.4 mm
b	0.28 in / 7 mm	e	0.43 in / 11 mm
c	0.02 in / 0.5 mm	f	0.34 in / 8.7 mm



Product Range and Company Overview

A Complete Suite of Automation Services

Our experienced engineers provide complete support at every stage of your development process, including: conceptualization, analysis, engineering, design, assembly, documentation, validation, and production.



Custom Automation Components
Complete custom engineered solutions



Custom Control Cabinets
Comprehensive engineering support and on-site services



Complete Systems
Shipment, stocking and storage services

The Broadest Range of Automation Components

With a comprehensive line of more than 30,000 automation components, Festo is capable of solving the most complex automation requirements.



Electromechanical
Electromechanical actuators, motors, controllers & drives



Pneumatics
Pneumatic linear and rotary actuators, valves, and air supply



PLCs and I/O Devices
PLC's, operator interfaces, sensors and I/O devices

Supporting Advanced Automation... As No One Else Can!

Festo is a leading global manufacturer of pneumatic and electromechanical systems, components and controls for industrial automation, with more than 12,000 employees in 56 national headquarters serving more than 180 countries. For more than 80 years, Festo has continuously elevated the state of manufacturing with innovations and optimized motion control solutions that deliver higher performing, more profitable automated manufacturing and processing equipment. Our dedication to the advancement of automation extends beyond technology to the education and development of current and future automation and robotics designers with simulation tools, teaching programs, and on-site services.

Quality Assurance, ISO 9001 and ISO 14001 Certifications

Festo Corporation is committed to supply all Festo products and services that will meet or exceed our customers' requirements in product quality, delivery, customer service and satisfaction.

To meet this commitment, we strive to ensure a consistent, integrated, and systematic approach to management that will meet or exceed the requirements of the ISO 9001 standard for Quality Management and the ISO 14001 standard for Environmental Management.



© Copyright 2008, Festo Corporation. While every effort is made to ensure that all dimensions and specifications are correct, Festo cannot guarantee that publications are completely free of any error, in particular typing or printing errors. Accordingly, Festo cannot be held responsible for the same. For Liability and Warranty conditions, refer to our "Terms and Conditions of Sale", available from your local Festo office. All rights reserved. No part of this publication may be reproduced, distributed, or transmitted in any form or by any means, electronic, mechanical, photocopying or otherwise, without the prior written permission of Festo. All technical data subject to change according to technical update.



Printed on recycled paper at New Horizon Graphic, Inc., FSC certified as an environmentally friendly printing plant.

Festo North America

United States

Customer Resource Center
502 Earth City Expy., Suite 125
Earth City, MO 63045

For ordering assistance, or to find
your nearest Festo Distributor,

Call: 1.800.99.FESTO

Fax: 1.800.96.FESTO

Email: customer.service@us.festo.com

For technical support,

Call: 1.866.GO.FESTO

Fax: 1.800.96.FESTO

Email: product.support@us.festo.com

Headquarters

Festo Corporation
395 Moreland Road
P.O. Box 18023
Hauppauge, NY 11788
www.festo.com/us

Sales Offices

Appleton

N. 922 Tower View Drive, Suite N
Greenville, WI 54942

Boston

120 Presidential Way, Suite 330
Woburn, MA 01801

Chicago

1441 East Business Center Drive
Mt. Prospect, IL 60056

Dallas

1825 Lakeway Drive, Suite 600
Lewisville, TX 75057

Detroit - Automotive Engineering Center

2601 Cambridge Court, Suite 320
Auburn Hills, MI 48326

New York

395 Moreland Road
Hauppauge, NY 11788

Silicon Valley

4935 Southfront Road, Suite F
Livermore, CA 94550

Design and Manufacturing Operations



East: 395 Moreland Road, Hauppauge, NY 11788



Central: 1441 East Business Center Drive, Mt. Prospect, IL 60056



West: 4935 Southfront Road, Suite F, Livermore, CA 94550

Mexico

Headquarters

Festo Pneumatic, S.A.
Av. Ceylán 3, Col. Tequesquahuac
54020 Tlalnepantla, Edo. de México
Call: 011 52 [55] 53 21 66 00
Fax: 011 52 [55] 53 21 66 65
Email: festo.mexico@mx.festo.com
www.festo.com/mx



Canada

Headquarters

Festo Inc.
5300 Explorer Drive
Mississauga, Ontario L4W 5G4
Call: 1.905.624.9000
Fax: 1.905.624.9001
Email: info.ca@ca.festo.com
www.festo.com/ca



Festo Worldwide

Argentina Australia Austria Belarus Belgium Brazil Bulgaria Canada Chile China Colombia Croatia Czech Republic Denmark
Estonia Finland France Germany Great Britain Greece Hong Kong Hungary India Indonesia Iran Ireland Israel Italy Japan
Latvia Lithuania Malaysia Mexico Netherlands New Zealand Norway Peru Philippines Poland Romania Russia Serbia Singapore
Slovakia Slovenia South Africa South Korea Spain Sweden Switzerland Taiwan Thailand Turkey Ukraine United States Venezuela

www.festo.com