

Push-in fittings NPQR

FESTO



Key features

Application



Choosing the right fitting is effortless. With a system that includes well over 1000 types of standard and function fittings, Festo offers a secure solution for every connection.

Suitability for food contact



The push-in fittings NPQR are suitable for contact with food. They have the necessary declaration of conformity in accordance with EU Regulation (EC) No. 1935/2004.

Summary of tubing/fitting combinations

Applications	Fitting	Tubing	Description
Standard	QS	PEN	Suitable for a wide range of tasks and attractively priced. Flexible thanks to highly resistant materials, easy to install thanks to optimised bending radii. High level of abrasion resistance in dynamic applications.
	QS	PUN	Maximum flexibility in standard applications thanks to an extremely wide range of options for combining the different types.
	QS	PAN	Meets all requirements, even for standard applications with increased pressure and temperature ranges.
High pressures	NPQM	PAN-MF	Meets DIN standard 73378: ideal for use in mobile pneumatics. Suitable for increased temperature ranges combined with high pressure ranges.
	NPQH	PAN-R	Powerful in pressure ranges up to 20 bar, for example in applications with the pressure booster DPA.
Resistant to chemicals and hydrolysis, food-safe	NPQP	PLN	Resistant to cleaning agents, FDA-compliant and economical. Can be used instead of the combination with stainless steel fittings.
	NPKA	PUN-H	Hydrolysis-resistant and suitable for water applications. Combination suitable for use in cleanrooms, FDA-compliant and corrosion-resistant as made from 100% polymer. Very easy to install with the "one click principle".
	NPQH	PFAN/PTFEN	For high temperatures up to 150°C. Food-safe, FDA-compliant and resistant to cleaning agents.
	NPCK	PFAN/PTFEN	Easy to clean thanks to the union nut's edge-free design. Maximum corrosion resistance (CRC 4) and FDA-compliant. Suitable for a wide range of media.
	CRQS	PFAN/PTFEN	Maximum corrosion resistance (CRC 4) and maximum resistance to aggressive acids and alkalis.
Resistant to chemicals and hydrolysis	NPQR	PFAN/PTFEN	Optimised design, fewer edges where dirt can collect – all at an attractive price. For high temperatures up to 150°C. Pressure range up to 16 bar. Highest level of corrosion resistance (CRC 4).
Antistatic	NPQM	PUN-CM	Antistatic tubing plus solid metal fitting: maximum protection for electric and electronic components.
Flame-retardant	NPQM	PUN-V0	Very safe in areas where there is a risk of fire thanks to flame-retardant properties. The tubing has been tested to DIN 5510-2.
Resistant to welding spatter	NPQH	PUN-V0-C	Ideal for applications involving welding spatter. Reliable thanks to a tubing wall thickness of 2 mm for all diameters.
	QS-V0	PAN-V0	Safe even in the immediate vicinity of welding spatter thanks to double-walled tubing with special fitting.

Key features

Push-in fittings – Product range

QSM, mini series

Datasheets → Internet: qsm



Miniature push-in fittings for maximum component density in confined spaces. For pneumatic applications with a temperature range up to 80°C and a pressure range up to 14 bar. Tubing O.D. of 2, 3, 4 and 6 mm with connecting threads M3, M5, M6, M7, R1/8 and G1/8.

QS, standard series

Datasheets → Internet: qs



Wide selection of push-in fittings for pneumatic applications with a temperature range up to 80°C and a pressure range up to 14 bar. Tubing O.D. 4, 6, 8, 10, 12, 16 and 22 mm with connecting thread R1/8 ... R1/2 and G1/8 ... G3/4.

CRQS, stainless steel

Datasheets → Internet: crqs



Stainless steel push-in fitting. Maximum corrosion resistance CRC 4 and chemical resistance with approval for use in the food and packaging industry. For pneumatic applications with a temperature range up to 120°C and a pressure range up to 10 bar. Tubing O.D. 4, 6, 8, 10, 12 and 16 mm with connecting threads M5 and R1/8 ... R1/2.

QS-V0, resistant to welding spatter

Datasheets → Internet: qs-v0



Flame-retardant push-in fitting for use in all areas where there is a risk of fire, for example welding systems in the automotive industry, and in the construction industry. For pneumatic applications with a temperature range up to 60°C and a pressure range up to 10 bar. Tubing O.D. 4, 6, 8, 10 and 12 mm with connecting thread R1/8 ... R1/2 and G1/8 ... G1/2.

NPQH

Datasheets → Internet: npqh



All metal push-in fitting made of chemically nickel-plated brass. High corrosion resistance CRC 3 and chemical resistance. For pneumatic applications with a temperature range up to 150°C and a pressure range up to 20 bar. Tubing O.D. 4, 6, 8, 10, 12 and 14 mm with connecting thread M5, M7 and G1/8 ... G1/2.

NPQM

Datasheets → Internet: npqm



Attractively priced metal push-in fitting for pneumatic applications with a temperature range up to 70°C and a pressure range up to 16 bar. Tubing O.D. 3, 4, 6, 8, 10, 12 and 14 mm with connecting thread M5, M7 and G1/8 ... G1/2.

NPQP

Datasheets → Internet: npqp



Polypropylene fitting for use in applications with extreme media influences. For pneumatic applications with a temperature range up to 60°C and a pressure range up to 10 bar. Tubing O.D. 4, 6, 8, 10 and 12 mm with connecting threads R1/8 ... R1/2.

NPQR, stainless steel

Datasheets → Internet: npqr



Stainless steel push-in fitting. Maximum corrosion resistance CRC 4 and chemical resistance. For pneumatic applications with a temperature range up to 150°C and a pressure range up to 16 bar. Tubing O.D. 4, 6, 8, 10, 12, 14 and 16 mm with connecting thread M5, M7 and G1/8 ... G1/2.

Key features

Functional push-in fittings – Product range

QSK,
push-in fitting, self-sealing

Datasheets → Internet: qsk



Push-in fitting that blocks the air flow after the tubing is disconnected. For pneumatic applications with a temperature range up to 60°C and a pressure range up to 14 bar.
Tubing O.D. 4, 6, 8, 10 and 12 mm with connecting threads M5, R1/8 ... R1/2 and G1/8 ... G1/2.

QSR,
push-in fitting, rotatable

Datasheets → Internet: qsr



Push-in fitting with swivel joint, rotatable 360°. The ball bearing enables rotating movements in the application up to max. 500 rpm. For pneumatic applications with a temperature range up to 60°C and a pressure range up to 14 bar.
Tubing O.D. 4, 6, 8, 10 and 12 mm with connecting threads M5, R1/8 ... R1/2 and G1/8 ... G1/2.

Quick connectors – Product range

NPCK

Datasheets → Internet: npck



Stainless steel fitting for use in areas subject to intensive cleaning. Maximum level of corrosion resistance CRC 4. For pneumatic applications with a temperature range up to 120°C and a pressure range up to 12 bar.
Tubing O.D. of 4, 6, 8 and 10 mm with connecting threads M5 and G1/8 ... G3/8.

Click fittings – Product range

NPKA

Datasheets → Internet: npka



Polymer fitting for easy one-handed installation. Hydrolysis-resistant, FDA-compliant and easy to clean. For pneumatic applications with a temperature range up to 60°C and a pressure range up to 10 bar.
Tubing O.D. of 6 mm with connecting thread G1/8.

Technical data

General technical data		
Pneumatic connection 1	Male thread M5; M7; G3/8; G1/2	Male thread G1/8; G1/4
Size	Standard	
Design	Push-pull principle	
Mounting position	Any	
Type of seal on the screwed trunnion	Sealing ring	
Nominal tightening torque [Nm]	1 ±20% for connecting thread M5	
	3 ±20% for connecting thread M7	
	6 ±20% for connecting thread G1/8 (exception NPQR-DK-G18-Q4: 3 ±20%)	
	7.5 ±20% for connecting thread G1/4	
	9 ±20% for connecting thread G3/8	
	9 ±20% for connecting thread G1/2	

Operating and environmental conditions		
Pneumatic connection 2	For tubing O.D. 4 mm; 6 mm; 8 mm; 10 mm; 12 mm	For tubing O.D. 14 mm, 16 mm
Operating pressure for entire temperature range	[MPa]	−0.095 ... +1.6
	[bar]	−0.95 ... +16
	[psi]	−13.775 ... +232
Operating medium	Compressed air to ISO 8573-1:2010 [7:--]	
Note on the operating/pilot medium	Lubricated operation possible	
PWIS conformity	VDMA24364-B2-L	
Ambient temperature ¹⁾	[°C]	−20 ... +150
Note on ambient temperature	With PUN-H: −20°C - 60°C	
Corrosion resistance class CRC ²⁾	4 – Particularly high corrosion stress	
Suitable for the production of lithium-ion batteries ³⁾	Metals with more than 1% copper, zinc or nickel by mass are excluded from use. Exceptions are nickel in steel, chemically nickel-plated surfaces, printed circuit boards, cables, electrical plug connectors and coils	
Cleanroom class ³⁾	Class 4 to ISO 14644-1	
Food-safe ³⁾	See declaration of conformity	
	NSF/ANSI 169	
Certificate-issuing authority	NSF C0556009	

1) Observe the range of application of the plastic tubing.

2) Corrosion resistance class CRC 4 to Festo standard FN 940070

Particularly high corrosion stress. Outdoor exposure under extreme corrosive conditions. Parts exposed to aggressive media, e.g. in the chemical or food industries. Such applications may need to be safeguarded with special tests (→ also FN 940082) using appropriate media.








3) Additional information: www.festo.com/catalogue/npqr → Support/Downloads.

Materials	
Housing	High-alloy stainless steel
Releasing ring	High-alloy stainless steel
Retaining ring	High-alloy stainless steel
Tube clamping segment	High-alloy stainless steel
Thrust ring	PPSU
Nut (NPQR-H only)	High-alloy stainless steel
Tubing seal	FPM
Threaded seal	FPM
Note on materials	RoHS-compliant




Tube mounting/dismounting

Attaching	Dismantling
<p>The prerequisite for ensuring that the inner seal is securely held and protected against damage is that the tube is cut into straight lengths and deburred.</p>	
<p>1) Insert tubing as far as the stop.</p> <p>It is important to ensure that the tubing is inserted into the inner seal. Depending on the tolerance between the tubing and the seal, the contact of the tubing with the seal may be wrongly interpreted as the stop.</p>	<p>1) The tubing can be detached easily by pressing and holding down the releasing ring. Remove the tubing carefully from the fitting.</p>
<p>2) Check that the tubing connection is secure by pulling gently on the tube.</p>	<p>2) Before re-using the tubing, remove the damaged part by cutting it off.</p>

Product range overview

Design	Version	Type	Connection D1		Connection D2		→ Page	
			M thread	G thread	Tubing O.D.	Tubing O.D.		
Straight shape	Push-in fitting – Male thread with internal hex							
		NPQR-DK	M5	–	–	4, 6	8	
			M7			4, 6		
			–			G1/8		4, 6, 8, 10
						G1/4		6, 8, 10
						G3/8		8, 10, 12
						G1/2		12, 14, 16
	Push-in connector							
		NPQR-D	–	–	4	4	9	
					6	6		
					8	8		
					10	10		
					12	12		
					14	14		
		NPQR-D Reducing	–	–	6	4	9	
					8	6		
					10	8		
					12	10		
					16	12		
					Push-in bulkhead connector			
		NPQR-H	–	–	4	4	10	
					6	6		
					8	8		
10					10			
12					12			
16					16			
Plug screw								
	NPQR-BK	M5	–	–	–	10		
		M7						
		–					G1/8	
		G1/4						
		G3/8						
		G1/2						
L-shape	Push-in L-fitting – Male thread with external hex							
		NPQR-L	M5	–	–	4, 6	11	
			–			G1/8		4, 6, 8
						G1/4		6, 8, 10
						G3/8		10, 12
						G1/2		12, 14, 16
						Push-in L-connector		
		NPQR-L	–	–	4	4	11	
					6	6		
					8	8		
					10	10		
					12	12		
					14	14		
16					16			

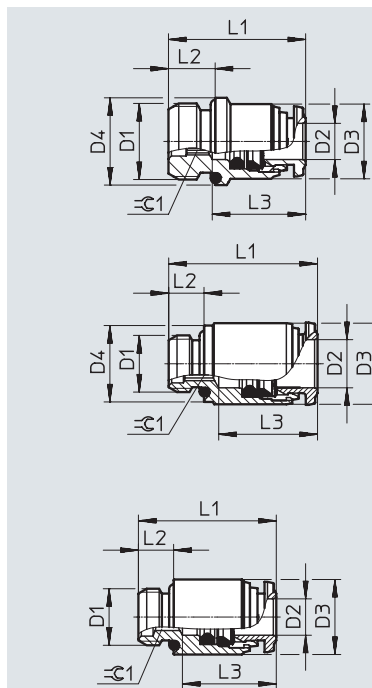
Product range overview

Design	Version	Type	Connection D1		Connection D2		→ Page
			M thread	G thread	Tubing O.D.	Tubing O.D.	
T-shape	Push-in T-fitting – Male thread with external hex						
		NPQR-T	M5	–	–	4, 6	12
			–	G1/8		6, 8	
				G1/4		8, 10	
				G3/8		10, 12	
				G1/2		12, 16	
	Push-in T-connector						
		NPQR-T	–	–	4	4	12
					6	6	
					8	8	
					10	10	
					12	12	
					14	14	
					16	16	
Y-shape	Push-in Y-connector						
		NPQR-Y	–	–	4	4	13
					6	6	
					8	8	
					10	10	
					12	12	
					16	16	

Datasheet

Push-in fitting NPQR-DK

Male thread with internal hex



NPQR-DK-G18-Q4
NPQR-DK-G14-Q6
NPQR-DK-G38-Q8
NPQR-DK-G38-Q10
NPQR-DK-G12-Q12
NPQR-DK-G12-Q14

NPQR-DK-M5-Q4
NPQR-DK-M7-Q4
NPQR-DK-G18-Q8
NPQR-DK-G18-Q10
NPQR-DK-G14-Q10

NPQR-DK-M5-Q6
NPQR-DK-M7-Q6
NPQR-DK-G18-Q6
NPQR-DK-G14-Q8
NPQR-DK-G38-Q12
NPQR-DK-G12-Q16

Dimensions and ordering data

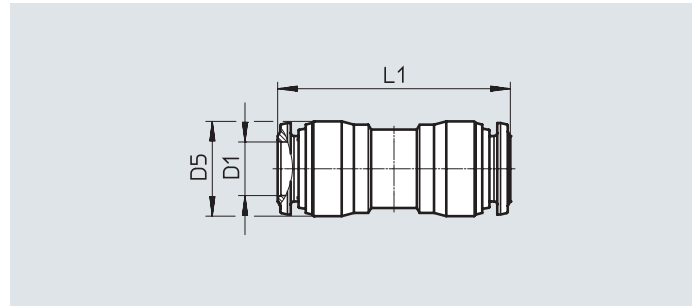
Pneumatic connection		Nominal size	Dimensions [mm]						Weight/ piece	Part no.	Type	PU ²⁾
Male thread	For tubing O.D.		D3 Ø	D4 Ø	L1	L2	L3 ¹⁾	±G1				
D1	D2	[mm]							[g]			
M thread with sealing ring												
M5	4	2.1	9.8	8	19.5	4	14	2	5.4	8085657	NPQR-DK-M5-Q4	1
	6	2.6	10	—	20.1	4	13.5	2.5	5.7	8085659	NPQR-DK-M5-Q6	1
M7	4	2.6	9.8	9.4	21	5	14	2.5	6.2	8085658	NPQR-DK-M7-Q4	1
	6	4.2	10	—	21	5	13.5	4	5.8	8085660	NPQR-DK-M7-Q6	1
G thread with sealing ring												
G1/8	4	2.6	10	12.9	19.5	6	14	2.5	7.5	8085661	NPQR-DK-G18-Q4	1
	6	4.2	12.8	—	23.5	6	16	4	11.4	8085662	NPQR-DK-G18-Q6	1
	8	5.3	13.8	13	25.5	6	16.8	5	14.7	8085663	NPQR-DK-G18-Q8	1
	10	5.3	17	13	28.5	6	19.35	5	19.1	8087695	NPQR-DK-G18-Q10	1
G1/4	6	4.2	12.8	15	23.5	8	16	4	12.8	8085664	NPQR-DK-G14-Q6	1
	8	6.3	15	—	23.5	8	16.8	6	14.4	8085665	NPQR-DK-G14-Q8	1
	10	6.3	16.8	16	29.5	8	19.35	6	22.6	8085666	NPQR-DK-G14-Q10	1
G3/8	8	6.3	14	20	22	9	16.8	6	20.5	8086953	NPQR-DK-G38-Q8	1
	10	7.3	17	20	26.5	9	19.35	7	24.3	8085667	NPQR-DK-G38-Q10	1
	12	8.4	20	—	33	9	22.35	8	36.5	8085668	NPQR-DK-G38-Q12	1
G1/2	12	8.4	20	24.8	30.5	10	22.35	8	40.7	8085669	NPQR-DK-G12-Q12	1
	14	11.6	21.5	24.8	29.5	10	21.5	10	46.8	8085670	NPQR-DK-G12-Q14	1
	16	12.6	24	24.8	36	10	23.5	12	49	8085671	NPQR-DK-G12-Q16	1

1) Tubing Insertion depth

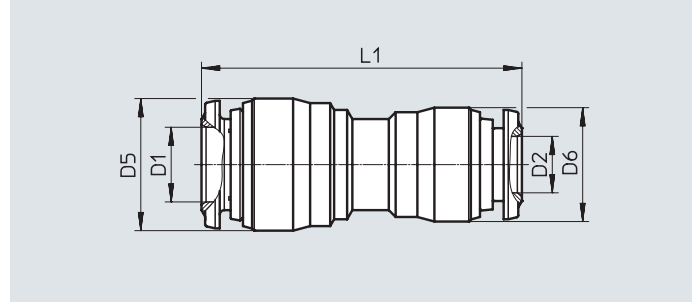
2) Packaging unit

Datasheet

Push-in connector NPQR-D



Reducing



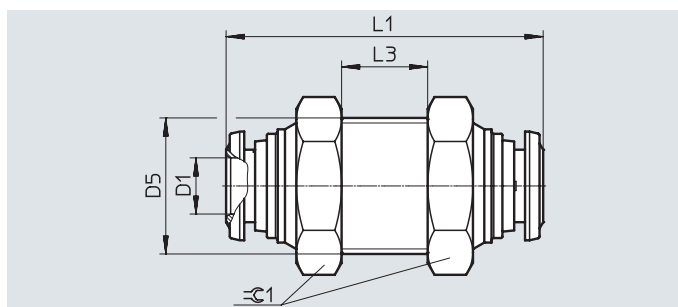
Dimensions and ordering data

Pneumatic connection		Nominal size [mm]	Dimensions [mm]			Tubing insertion depth [mm]	Note on the tubing insertion depth [mm]	Weight/ piece [g]	Part no.	Type	PU ¹⁾
For tubing O.D. D1	For tubing O.D. D2		D5 Ø	D6 Ø	L1						
4	4	3	10.3	–	30	14	–	9.8	8085697	NPQR-D-Q4-E	1
6	6	5	12.5	–	34	16	–	15	8085698	NPQR-D-Q6-E	1
8	8	7	14.5	–	35.5	16.8	–	19.4	8085699	NPQR-D-Q8-E	1
10	10	9	17.5	–	41	19.35	–	32.4	8085700	NPQR-D-Q10-E	1
12	12	11	20.5	–	47	22.4	–	49.1	8085701	NPQR-D-Q12-E	1
14	14	13	21.5	–	45	21.5	–	47.8	8085702	NPQR-D-Q14-E	1
16	16	15	24	–	53.5	23.5	–	65.6	8085703	NPQR-D-Q16-E	1
Reducing											
6	4	3	12.5	10.3	32.1	14 - 16.1	Ø4 depth 14 Ø6 depth 16.1	12	8085704	NPQR-D-Q6-Q4	1
8	6	5	14.5	12.5	35	16.1 - 17.05	Ø6 depth 16.1 Ø8 depth 17.05	16.7	8085705	NPQR-D-Q8-Q6	1
10	8	7	17.5	14.5	38.5	17.25 - 19.35	Ø10 depth 19.35 Ø8 depth 17.25	25.1	8085706	NPQR-D-Q10-Q8	1
12	10	9	20.5	17.5	44	19.6 - 22.4	Ø10 depth 19.6 Ø12 depth 22.4	39.6	8085707	NPQR-D-Q12-Q10	1
16	12	11	24	20.5	52.5	22.5 - 23.5	Ø12 depth 22.5 Ø16 depth 23.5	63.7	8085708	NPQR-D-Q16-Q12	1

1) Packaging unit

Datasheet

Push-in bulkhead connector NPQR-H

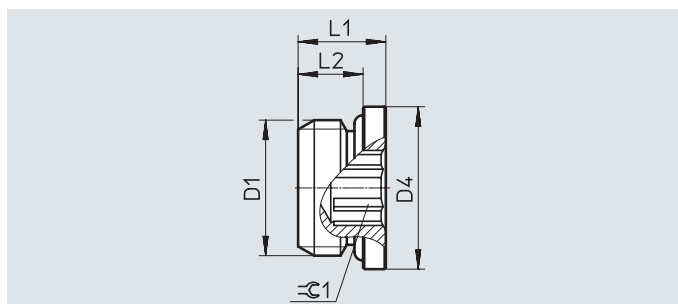


Dimensions and ordering data

Pneumatic connection	Nominal size [mm]	Dimensions [mm]				Tubing insertion depth [mm]	Weight/piece [g]	Part no.	Type	PU ¹⁾
For tubing O.D. D1		D5	L1	L3 max.	≈G1					
4	3	M12x1	31	7	17	14	24.3	8085729	NPQR-H-Q4-E	1
6	5	M14x1	35	9.5	17	16	28.3	8085730	NPQR-H-Q6-E	1
8	7	M16x1	36.6	10.5	19	16.8	37.1	8085731	NPQR-H-Q8-E	1
10	9	M20x1	42.1	13.3	24	19.55	66.8	8085732	NPQR-H-Q10-E	1
12	11	M22x1	48	12.5	26	22.4	88.1	8085733	NPQR-H-Q12-E	1
16	15	M27x1.5	53.5	10.4	32	23.5	153.6	8099104	NPQR-H-Q16-E	1

1) Packaging unit

Plug screw NPQR-BK



Dimensions and ordering data

Pneumatic connection	Dimensions [mm]				Weight/piece [g]	Part no.	Type	PU ¹⁾
Male thread D1	D4 Ø	L1	L2	≈G1				
M thread with sealing ring								
M5	8	6	4	2	3.2	8104803	NPQR-BK-M5	1
M7	9.5	7.5	5	3	2.1	8085672	NPQR-BK-M7	1
G thread with sealing ring								
G1/8	14	8.5	6	5	4	8085673	NPQR-BK-G18	1
G1/4	18	11	8	6	11	8085674	NPQR-BK-G14	1
G3/8	20	12.5	9	8	17	8085675	NPQR-BK-G38	1
G1/2	25	13.5	10	10	29	8085676	NPQR-BK-G12	1

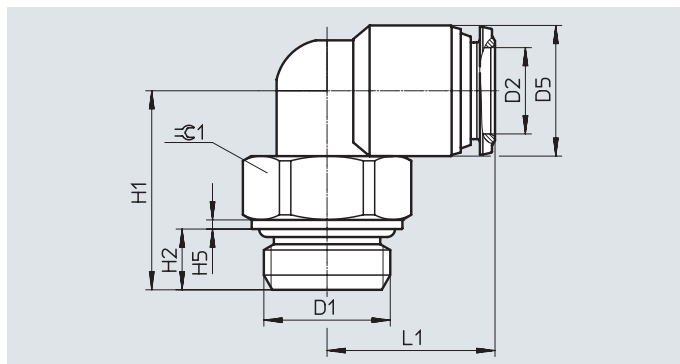
1) Packaging unit

Datasheet

Push-in L-fitting NPQR-L

Male thread with external hex

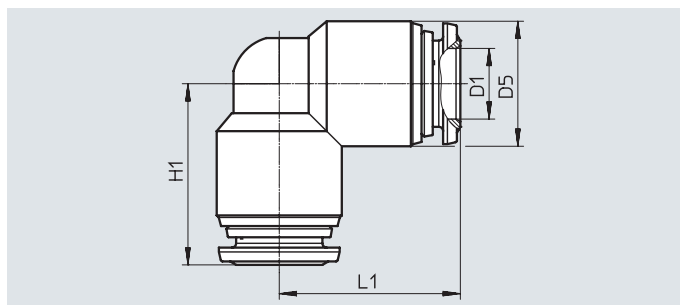
Rotatable 360°



Dimensions and ordering data													
Pneumatic connection		Nominal size [mm]	Dimensions [mm]						Tubing insertion depth [mm]	Weight/ piece [g]	Part no.	Type	PU ¹⁾
Male thread	For tubing O.D.		D5 Ø	H1	H2	H5	L1	±G1					
D1	D2												
M thread with sealing ring													
M5	4	2	10	16	4	3	15.5	8	11	8.3	8085679	NPQR-L-M5-Q4	1
	6	2	12.5	17.5	4	3	18	8	13.1	13.4	8098626	NPQR-L-M5-Q6	1
G thread with sealing ring													
G1/8	4	2	10	16	6	1	15.5	13	11	12.1	8085680	NPQR-L-G18-Q4	1
	6	4	12.5	17.5	6	1	18	13	13.1	16.4	8085681	NPQR-L-G18-Q6	1
	8	6	14.5	23	6	1	20	13	13	23.5	8085682	NPQR-L-G18-Q8	1
G1/4	6	4	12.5	20	8	1	18	15	13.1	21.6	8085683	NPQR-L-G14-Q6	1
	8	6	14.5	21	8	1	20	15	13	24.4	8085684	NPQR-L-G14-Q8	1
	10	8	17	27.5	8	0.9	23.5	15	15	36.5	8085685	NPQR-L-G14-Q10	1
G3/8	10	8	17	25	9	1.5	23.5	20	15	45	8085686	NPQR-L-G38-Q10	1
	12	10	20.5	30.5	9	1.5	27.5	20	17.4	65.3	8085687	NPQR-L-G38-Q12	1
G1/2	12	10	20.5	28.5	10	1.5	27.5	25	17.4	73.2	8085688	NPQR-L-G12-Q12	1
	14	12	21.5	33	10	1.5	27.5	25	21.5	83.6	8085689	NPQR-L-G12-Q14	1
	16	14	24	36.5	10	1.5	33	25	23.5	99.7	8085690	NPQR-L-G12-Q16	1

1) Packaging unit

Push-in L-connector NPQR-L



Dimensions and ordering data									
Pneumatic connection	Nominal size	Dimensions [mm]			Tubing insertion depth	Weight/ piece	Part no.	Type	PU ¹⁾
For tubing O.D.		D5 Ø	H1	L1					
D1	[mm]				[mm]	[g]			
4	3	10	16	16	11	7.8	8085709	NPQR-L-Q4-E	1
6	5	12.5	19.5	19.5	13.1	14.9	8085710	NPQR-L-Q6-E	1
8	7	14.5	21	21	13	20.4	8085711	NPQR-L-Q8-E	1
10	9	17	24.5	24.5	15	29.9	8085712	NPQR-L-Q10-E	1
12	11	20.5	29	29	17.4	51.8	8085713	NPQR-L-Q12-E	1
14	14	21.5	28.5	28.5	21.5	60.6	8085714	NPQR-L-Q14-E	1
16	16	24	33	33	23.5	83.8	8085715	NPQR-L-Q16-E	1

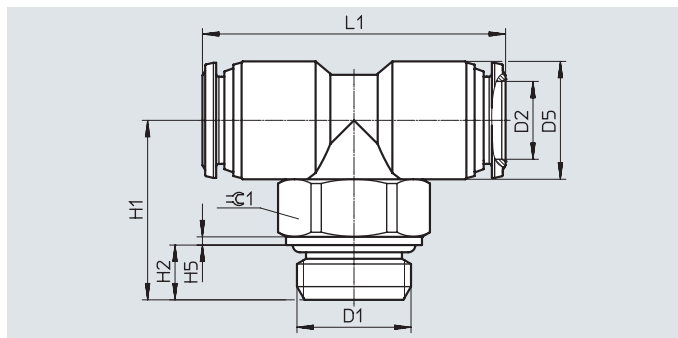
1) Packaging unit

Datasheet

Push-in T-fitting NPQR-T

Male thread with external hex

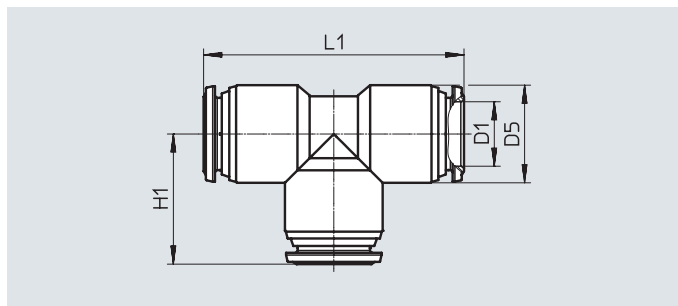
Rotatable 360°



Dimensions and ordering data														
Pneumatic connection		Nominal size	Dimensions [mm]						Tubing insertion depth	Weight/ piece	Part no.	Type	PU ¹⁾	
Male thread	For tubing O.D.		D5 ø	H1	H2	H5	L1	±C1						
D1	D2	[mm]							[mm]	[g]				
M thread with sealing ring														
M5	4	2	10	16	4	3	30.5	8	11	10.4	8085691	NPQR-T-M5-Q4	1	
	6	2.2	12.5	17.5	4	3	36	8	16	21.8	8099103	NPQR-T-M5-Q6	1	
G thread with sealing ring														
G1/8	6	4	12.5	17.5	6	1	36	13	13.1	20.4	8085692	NPQR-T-G18-Q6	1	
	8	6	14.5	23	6	1	40	13	13	28.9	8085693	NPQR-T-G18-Q8	1	
G1/4	8	6	14.5	21	8	1	40	15	13	29.9	8085694	NPQR-T-G14-Q8	1	
	10	8	17	27.5	8	1	47	15	5.1	44	8099100	NPQR-T-G14-Q10	1	
G3/8	10	8	17	25	9	1.5	47	20	15.1	52.5	8085695	NPQR-T-G38-Q10	1	
	12	10	20.5	30.5	9	1.5	55	20	17.4	79.8	8099101	NPQR-T-G38-Q12	1	
G1/2	12	10	20.5	28.5	10	1.5	55	25	17.4	87.7	8099102	NPQR-T-G12-Q12	1	
	16	14	24	36.5	10	1.5	65.5	25	23.5	132	8085696	NPQR-T-G12-Q16	1	

1) Packaging unit

Push-in T-connector NPQR-T

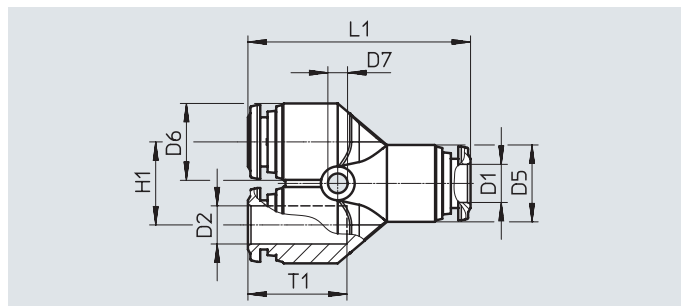


Dimensions and ordering data									
Pneumatic connection	Nominal size	Dimensions [mm]			Tubing insertion depth	Weight/ piece	Part no.	Type	PU ¹⁾
For tubing O.D.		D5 Ø	H1	L1					
D1	[mm]				[mm]	[g]			
4	3	10	16	32	11	10	8085716	NPQR-T-Q4-E	1
6	5	12.5	19.5	39.5	13.1	19.2	8085717	NPQR-T-Q6-E	1
8	7	14.5	21	42	13	26.1	8085718	NPQR-T-Q8-E	1
10	9	17	24.5	49	15.1	37.7	8085719	NPQR-T-Q10-E	1
12	11	20.5	29	58	17.4	66.7	8085720	NPQR-T-Q12-E	1
14	14	21.5	28.5	57.5	21.5	64.5	8085721	NPQR-T-Q14-E	1
16	16	24	32.8	65.5	23.5	114.7	8085722	NPQR-T-Q16-E	1

1) Packaging unit

Datasheet

Push-in Y-connector NPQR-Y



Dimensions and ordering data

Pneumatic connection	Nominal size	Dimensions [mm]							Weight/ piece	Part no.	Type	PU ¹⁾
For tubing O.D.		D2 ∅	D5 ∅	D6 ∅	D7 ∅	H1	L1	T1 ¹⁾				
D1	[mm]								[g]			
4	3	4	10	10	3.2	11	31	14	18.2	8085723	NPQR-Y-Q4-E	1
6	5	6	12.5	12.5	3.2	13.5	36	16	30.6	8085724	NPQR-Y-Q6-E	1
8	7	8	14.5	14.5	3.2	15.5	40	17	37.8	8085725	NPQR-Y-Q8-E	1
10	9	10	17	17	4.2	18.5	47.5	19.5	65.2	8085726	NPQR-Y-Q10-E	1
12	11	12	20.5	20.5	4.2	21.5	56.2	22.5	106.4	8085727	NPQR-Y-Q12-E	1
16	15	16	24	24	5.2	25	62	23.5	140.9	8085728	NPQR-Y-Q16-E	1

1) Tubing insertion depth

2) Packaging unit

Festo - Your Partner in Automation



1 Festo Inc.
5300 Explorer Drive
Mississauga, ON L4W 5G4
Canada

Festo Customer Interaction Center
Tel: 1 877 463 3786
Fax: 1 877 393 3786
Email: customer.service.ca@festo.com



2 Festo Pneumatic
Av. Ceylán 3,
Col. Tequesquináhuac
54020 Tlalneptla,
Estado de México

Multinational Contact Center
01 800 337 8669
ventas.mexico@festo.com



3 Festo Corporation
1377 Motor Parkway
Suite 310
Islandia, NY 11749

Festo Customer Interaction Center
1 800 993 3786
1 800 963 3786
customer.service.us@festo.com



4 Regional Service Center
7777 Columbia Road
Mason, OH 45040

Connect with us

www.festo.com/socialmedia



www.festo.com

Subject to change