

Connecting cables, Sub-D, 44-pin

Technical data

Connecting cable
NEBV-S1G44
NEBV-S1WA44
NEBV-C-S1WA44

- Connecting cable for multi-pin plug connection
- Pre-assembled
- Straight or angled socket
- Cable lengths 2.5 m, 5 m or 10 m
- 36, 40 or 44 wires
- Sub-D, 44-pin



General technical data	
Electrical connection	Sub-D socket, 44-pin Open end
Type of mounting	4-40UNC
Mounting position	Any
Cable characteristics	For static applications
Operating voltage range	[V DC] 0 ... 30
Acceptable current load at 40 °C	[A] 0.86

Technical data					
Type		NEBV-...-LE39	NEBV-...-S6	NEBV-...-S10	NEBV-...-S9
Cable composition	[mm ²]	40 x 0.14	44 x 0.14	36 x 0.14	44 x 0.14
Cable diameter	[mm]	9.6	10.2	9.6	10.2
Cable diameter tolerance	[mm]	±0.5	±0.3	±0.3	±0.3
Min. cable bending radius	[mm]	95	122	115	122
Tightening torque		-	-	0.8	-
Degree of protection to EN 60529		IP65, IP67	IP40	IP65, IP67, IP69K	IP65, IP67

Materials					
Type		NEBV-...-LE39	NEBV-...-S6	NEBV-...-S10	NEBV-...-S9
Housing		PBT	Reinforced PC	Reinforced PA	PA66-GF30
Seals		-	-	EPDM	-
Screws		-	-	Stainless steel	-
Pin contact		Gold-plated bronze			
Cable sheath		PVC			
Note on materials		RoHS-compliant			

Operating and environmental conditions					
Type		NEBV-...-LE39	NEBV-...-S6	NEBV-...-S10	NEBV-...-S9
Ambient temperature	[°C]	-5 ... +60	-5 ... +80	-	-5 ... +80
Storage temperature	[°C]	-	-	-20 ... +40	-
Degree of contamination		-	-	3	3

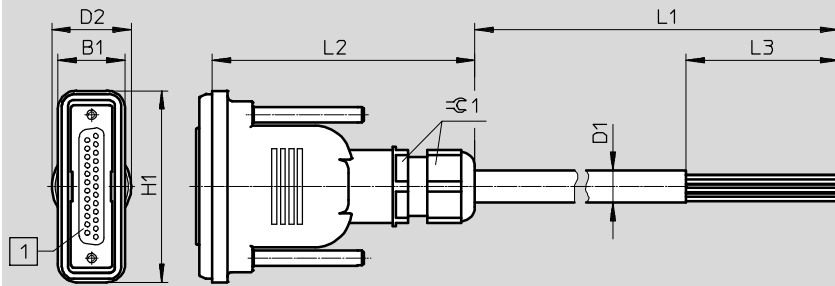
Connecting cables, Sub-D, 44-pin

Technical data

FESTO

Dimensions

Download CAD data → www.festo.com

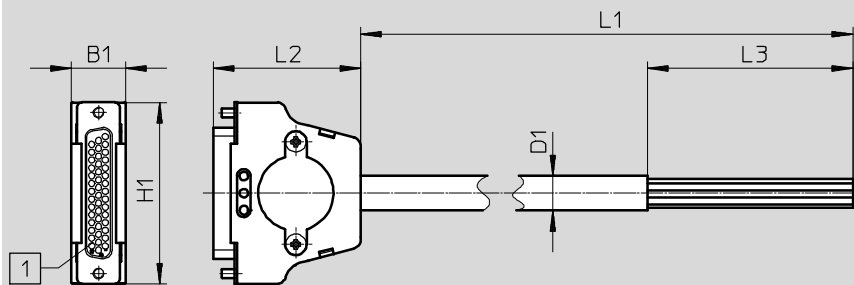


1 Sub-D socket, straight, 44-pin

Type	B1	D1 Ø	D2 Ø	H1	L1	L2
NEBV-S1G44-K-2.5-N-LE39	22	9.6	26	62.8	85±5	2500
NEBV-S1G44-K-5-N-LE39						5000
NEBV-S1G44-K-10-N-LE39						10,000

Dimensions

Download CAD data → www.festo.com



1 Sub-D socket, straight, 44-pin

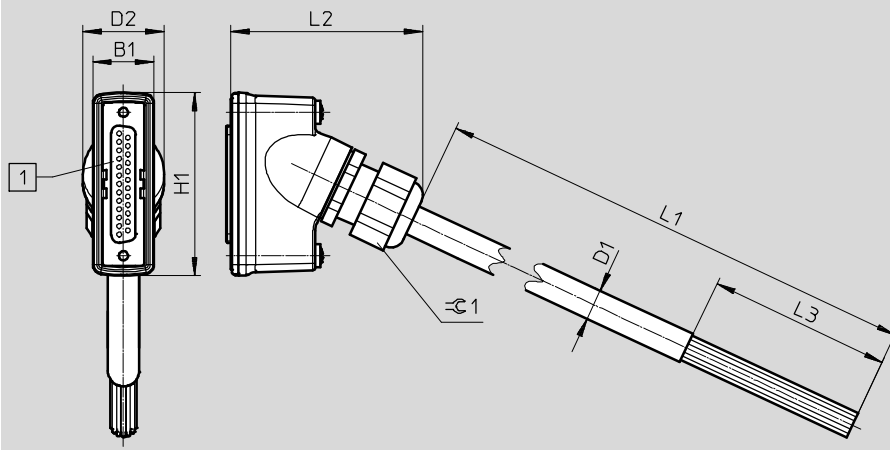
Type	B1	D1 Ø	H1	L1	L2	L3
NEBV-S1G44-K-2.5-N-LE44-S6	15.8	10.2	53	2500	43.1	60
NEBV-S1G44-K-5-N-LE44-S6				5000		
NEBV-S1G44-K-10-N-LE44-S6				10,000		

Connecting cables, Sub-D, 44-pin

Technical data

Dimensions

Download CAD data → www.festo.com



1 Sub-D socket, angled, 44-pin

Type	B1	D1 Ø	D2 Ø	H1	L1	L2	L3	∠1
NEBV-C-S1WA44-F-2.5-N-LE36-S10	20	9.6	27	60	2500	60	60	-
NEBV-C-S1WA44-F-5-N-LE36-S10					5000			
NEBV-C-S1WA44-F-10-N-LE36-S10					10,000			
NEBV-S1WA44-K-2.5-N-LE44-S9	20	10.2	26.5	60	2500	60	60	24
NEBV-S1WA44-K-5-N-LE44-S9					5000			
NEBV-S1WA44-K-10-N-LE44-S9					10,000			

Connecting cables, Sub-D, 44-pin

Technical data

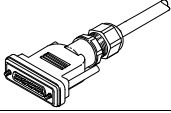
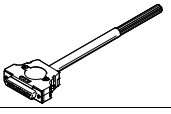
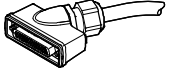
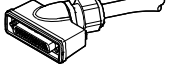
Circuitry (socket view)		Open end, 36-wire		Open end, 40-wire		Open end, 44-wire	
		Pin	Wire colour ¹⁾	Pin	Wire colour ¹⁾	Pin	Wire colour ¹⁾
	1	WH	1	WH	1	WH	
	2	BN	2	BN	2	BN	
	3	GN	3	GN	3	GN	
	4	YE	4	YE	4	YE	
	5	GY	5	GY	5	GY	
	6	PK	6	PK	6	PK	
	7	BU	7	BU	7	BU	
	8	RD	8	RD	8	RD	
	9	BK	9	BK	9	BK	
	10	VT	10	VT	10	VT	
	11	GY PK	11	GY PK	11	GY PK	
	12	RD BU	12	RD BU	12	RD BU	
	13	WH GN	13	WH GN	13	WH GN	
	14	BN GN	14	BN GN	14	BN GN	
	15	WH YE	15	WH YE	15	WH YE	
	16	YE BN	16	YE BN	16	YE BN	
	17	WH GY	17	WH GY	17	WH GY	
	18	GY BN	18	GY BN	18	GY BN	
	19	WH PK	19	WH PK	19	WH PK	
	20	PK BN	20	PK BN	20	PK BN	
	21	WH BU	21	WH BU	21	WH BU	
	22	BN BU	22	BN BU	22	BN BU	
	23	WH RD	23	WH RD	23	WH RD	
	24	BN RD	24	BN RD	24	BN RD	
	25	WH BK	25	WH BK	25	WH BK	
	26	BN BK	26	BN BK	26	BN BK	
	27	GY GN	27	GY GN	27	GY GN	
	28	YE GY	28	YE GY	28	YE GY	
	29	PK GN	29	PK GN	29	PK GN	
	30	YE PK	30	YE PK	30	YE PK	
	31	GN BU	31	GN BU	31	GN BU	
	32	YE BU	32	YE BU	32	YE BU	
	33	–	33	GN RD	33	GN RD	
	34	–	34	YE RD	34	YE RD	
	35	–	35	GN BK	35	GN BK	
	36	–	36	–	36	YE BK	
	37	–	37	–	37	GY BU	
	38	–	38	–	38	PK BU	
	39	–	39	–	39	GY RD	
	40	–	40	–	40	PK RD	
	41	GN RD	41	YE BK	41	GY BK	
	42	YE RD	42	GY BU	42	PK BK	
	43	GN BK	43	PK BU	43	BU BK	
	44	YE BK	44	GY RD	44	RD BK	

1) To IEC 757

Connecting cables, Sub-D, 44-pin

Technical data

FESTO

Ordering data						
	Cable composition [mm ²]	Degree of protection	Weight [g]	Cable length [m]	Part No.	Type
Straight socket – open end, 40-wire						
	40 x 0.14	IP65, IP67	389	2.5	565289	NEBV-S1G44-K-2.5-N-LE39
			737	5	565290	NEBV-S1G44-K-5-N-LE39
			1432	10	565291	NEBV-S1G44-K-10-N-LE39
Straight socket – open end, 44-wire						
	44 x 0.14	IP40	432	2.5	575113	NEBV-S1G44-K-2.5-N-LE44-S6
			814	5	575114	NEBV-S1G44-K-5-N-LE44-S6
			1600	10	575115	NEBV-S1G44-K-10-N-LE44-S6
Angled socket – open end, 36-wire						
	36 x 0.14	IP65, IP67, IP69K	460	2.5	577376	NEBV-C-S1WA44-F-2.5-N-LE36-S10
			860	5	577377	NEBV-C-S1WA44-F-5-N-LE36-S10
			1660	10	577378	NEBV-C-S1WA44-F-10-N-LE36-S10
Angled socket – open end, 44-wire						
	44 x 0.14	IP65, IP67	460	2.5	575420	NEBV-S1WA44-K-2.5-N-LE44-S9
			860	5	575421	NEBV-S1WA44-K-5-N-LE44-S9
			1660	10	575422	NEBV-S1WA44-K-10-N-LE44-S9

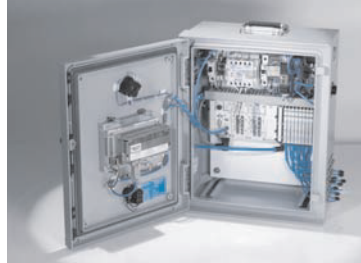
Product Range and Company Overview

A Complete Suite and Company Overview

Our experienced engineers provide complete support at every stage of your development process, including: conceptualization, analysis, engineering, design, assembly, documentation, validation, and production.



Custom Automation Components
Complete custom engineered solutions



Custom Control Cabinets
Comprehensive engineering support and on-site services



Complete Systems
Shipment, stocking and storage services

The Broadest Range of Automation Components

With a comprehensive line of more than 30,000 automation components, Festo is capable of solving the most complex automation requirements.



Electromechanical
Electromechanical actuators, motors, controllers & drivers



Pneumatics
Pneumatic linear and rotary actuators, valves, and air supply



PLCs and I/O Devices
PLC's, operator interfaces, sensors and I/O devices

Supporting Advanced Automation... As No One Else Can!

Festo is a leading global manufacturer of pneumatic and electromechanical systems, components and controls for industrial automation, with more than 16,000 employees in 60 national headquarters serving more than 180 countries. For more than 80 years, Festo has continuously elevated the state of manufacturing with innovations and optimized motion control solutions that deliver higher performing, more profitable automated manufacturing and processing equipment. Our dedication to the advancement of automation extends beyond technology to the education and development of current and future automation and robotics designers with simulation tools, teaching programs, and on-site services.

Quality Assurance, ISO 9001 and ISO 14001 Certifications

Festo Corporation is committed to supply all Festo products and services that will meet or exceed our customers' requirements in product quality, delivery, customer service and satisfaction.

To meet this commitment, we strive to ensure a consistent, integrated, and systematic approach to management that will meet or exceed the requirements of the ISO 9001 standard for Quality Management and the ISO 14001 standard for Environmental Management.



© Copyright 2013, Festo Corporation. While every effort is made to ensure that all dimensions and specifications are correct, Festo cannot guarantee that publications are completely free of any error, in particular typing or printing errors. Accordingly, Festo cannot be held responsible for the same. For Liability and Warranty conditions, refer to our "Terms and Conditions of Sale", available from your local Festo office. All rights reserved. No part of this publication may be reproduced, distributed, or transmitted in any form or by any means, electronic, mechanical, photocopying or otherwise, without the prior written permission of Festo. All technical data subject to change according to technical update.



Printed on recycled paper at New Horizon Graphic, Inc., FSC certified as an environmental friendly printing plant.

Festo North America



**1 Festo Canada
Headquarters
Festo Inc.**
5300 Explorer Drive
Mississauga, ON
L4W 5G4

2 Montréal
5600, Trans-Canada
Pointe-Claire, QC
H9R 1B6

3 Québec City
2930, rue Watt#117
Québec, QC
G1X 4G3



**4 Festo United States
Headquarters
Festo Corporation**
395 Moreland Road
Hauppauge, NY
11788

5 Appleton
North 922 Tower View Drive, Suite N
Greenville, WI
54942

7 Detroit
1441 West Long Lake Road
Troy, MI
48098

6 Chicago
85 W Algonquin - Suite 340
Arlington Heights, IL
60005

8 Silicon Valley
4935 Southfront Road, Suite F
Livermore, CA
94550

Festo Regional Contact Center

Canadian Customers

Commercial Support:
Tel: 1 877 GO FESTO (1 877 463 3786)
Fax: 1 877 FX FESTO (1 877 393 3786)
Email: festo.canada@ca.festo.com

Technical Support:
Tel: 1 866 GO FESTO (1 866 463 3786)
Fax: 1 877 FX FESTO (1 877 393 3786)
Email: technical.support@ca.festo.com

USA Customers

Commercial Support:
Tel: 1 800 99 FESTO (1 800 993 3786)
Fax: 1 800 96 FESTO (1 800 963 3786)
Email: customer.service@us.festo.com

Technical Support:
Tel: 1 866 GO FESTO (1 866 463 3786)
Fax: 1 800 96 FESTO (1 800 963 3786)
Email: product.support@us.festo.com