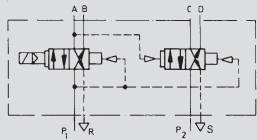


# Solenoid-Actuated Valves for BV-50, -100, -200-... 8/2, 8-Ported, 4-Way, 2-Position Valves, G3/8 ISO

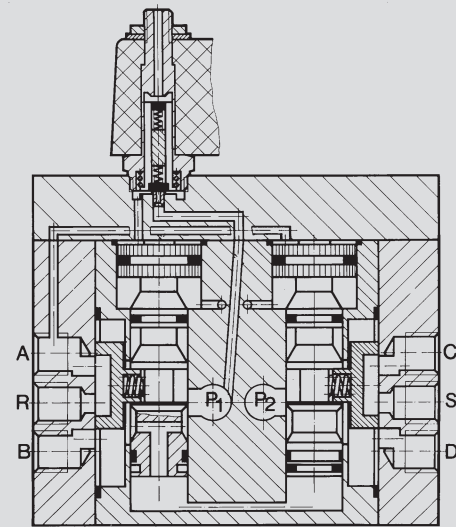
## Single Solenoid Valve

Spring Return for Pneumatic Feed Unit  
Type MLC-8-3/8-B



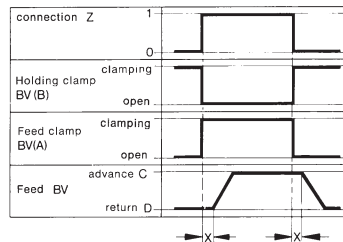
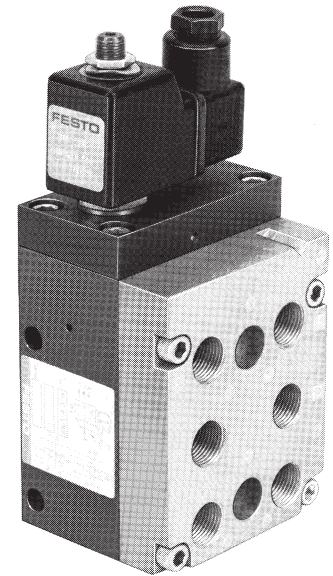
This valve controls the feed motion and alternate clamping of FESTO pneumatic feed units.

Different feed and clamping pressures are possible by varying pressures to P<sub>1</sub> and P<sub>2</sub>.



## Accessories

(Order separately)  
Solenoid coil, Type MSG or MSW-...  
Socket, Type MSSD-C or KME-...  
See pages 938-939.



x = Time delay

The 2 X 4 way, 2 position directional control valve shifts when the solenoid is energized. The flow in the first 4 way, 2 position valve changes from P<sub>1</sub> → B to P<sub>1</sub> → A. When the pressure in line A has built up to at least 50% of the Pressure P<sub>1</sub>, the second 4 way, 2 position valve will shift. The flow will then change from P<sub>2</sub> → D to P<sub>2</sub> → C. Similarly, the 4 way, 2 position directional control valves are returned by a differential piston area after the solenoid is deenergized. The delay between actuation of the two 4 way, 2 position valves allows the clamp jaws to be changed first, followed by the feed or return motion in a feed unit.

P<sub>1</sub> = Supply pressure for clamp cylinder  
P<sub>2</sub> = Supply pressure for feed cylinder  
D, C = Ports for feed cylinder  
B, A = Ports for clamping cylinder  
R, S = Exhaust

Order Number	4801 MLC-8-3/8-B	
Medium	Compressed air (filtered, lubricated or unlubricated)	
Mounting	Holes through housing	
Connection	G 3/8 ISO	
Orifice Size	3.5 in / 9 mm	
C <sub>v</sub> Factor (P → A)	1.8 C <sub>v</sub> / 1800 l/min	
Pressure Range*	30-150 psi / 2-10 bar	
Response Time at 90 psi / 6 bar	75 ms	
Ambient Temperature	23 to 104°F / -5 to 40°C	
Design	Slide valve, piloted	
Materials	Housing: Al, hard coat anodized. Seals: Buna N	
Weight	3.329 lb / 1.510 kg	
Direct Current	Standard Voltage	12, 24 V
	Available Voltage	6-240 V
Alternating Current	Standard Voltage	24, 42, 120, 220 V/50 Hz
	Available Voltage	6-380 V/50 or 60 Hz
Power Consumption	DC	12 W
	AC	Inrush 30 VA, holding 22 VA
ED Switching Time	100%	
Type of Protection	IP 65 (DIN 40050)	

\* 14 to 140°F / -10 to +60°C temperature range of medium

# Product Range and Company Overview

## A Complete Suite of Automation Services

Our experienced engineers provide complete support at every stage of your development process, including: conceptualization, analysis, engineering, design, assembly, documentation, validation, and production.



**Custom Automation Components**  
Complete custom engineered solutions



**Custom Control Cabinets**  
Comprehensive engineering support and on-site services



**Complete Systems**  
Shipment, stocking and storage services

## The Broadest Range of Automation Components

With a comprehensive line of more than 30,000 automation components, Festo is capable of solving the most complex automation requirements.



**Electromechanical**  
Electromechanical actuators, motors, controllers & drives



**Pneumatics**  
Pneumatic linear and rotary actuators, valves, and air supply



**PLCs and I/O Devices**  
PLC's, operator interfaces, sensors and I/O devices

## Supporting Advanced Automation... As No One Else Can!

Festo is a leading global manufacturer of pneumatic and electromechanical systems, components and controls for industrial automation, with more than 12,000 employees in 56 national headquarters serving more than 180 countries. For more than 80 years, Festo has continuously elevated the state of manufacturing with innovations and optimized motion control solutions that deliver higher performing, more profitable automated manufacturing and processing equipment. Our dedication to the advancement of automation extends beyond technology to the education and development of current and future automation and robotics designers with simulation tools, teaching programs, and on-site services.

## Quality Assurance, ISO 9001 and ISO 14001 Certifications

Festo Corporation is committed to supply all Festo products and services that will meet or exceed our customers' requirements in product quality, delivery, customer service and satisfaction.

To meet this commitment, we strive to ensure a consistent, integrated, and systematic approach to management that will meet or exceed the requirements of the ISO 9001 standard for Quality Management and the ISO 14001 standard for Environmental Management.



© Copyright 2008, Festo Corporation. While every effort is made to ensure that all dimensions and specifications are correct, Festo cannot guarantee that publications are completely free of any error, in particular typing or printing errors. Accordingly, Festo cannot be held responsible for the same. For Liability and Warranty conditions, refer to our "Terms and Conditions of Sale", available from your local Festo office. All rights reserved. No part of this publication may be reproduced, distributed, or transmitted in any form or by any means, electronic, mechanical, photocopying or otherwise, without the prior written permission of Festo. All technical data subject to change according to technical update.



Printed on recycled paper at New Horizon Graphic, Inc., FSC certified as an environmentally friendly printing plant.

# Festo North America

## United States

**Customer Resource Center**  
502 Earth City Expy., Suite 125  
Earth City, MO 63045

For ordering assistance, or to find  
your nearest Festo Distributor,

**Call:** 1.800.99.FESTO

**Fax:** 1.800.96.FESTO

**Email:** [customer.service@us.festo.com](mailto:customer.service@us.festo.com)

For technical support,

**Call:** 1.866.GO.FESTO

**Fax:** 1.800.96.FESTO

**Email:** [product.support@us.festo.com](mailto:product.support@us.festo.com)

### Headquarters

Festo Corporation  
395 Moreland Road  
P.O. Box 18023  
Hauppauge, NY 11788  
[www.festo.com/us](http://www.festo.com/us)

---

### Sales Offices

#### Appleton

N. 922 Tower View Drive, Suite N  
Greenville, WI 54942

#### Boston

120 Presidential Way, Suite 330  
Woburn, MA 01801

#### Chicago

1441 East Business Center Drive  
Mt. Prospect, IL 60056

#### Dallas

1825 Lakeway Drive, Suite 600  
Lewisville, TX 75057

#### Detroit - Automotive Engineering Center

2601 Cambridge Court, Suite 320  
Auburn Hills, MI 48326

#### New York

395 Moreland Road  
Hauppauge, NY 11788

#### Silicon Valley

4935 Southfront Road, Suite F  
Livermore, CA 94550

## Design and Manufacturing Operations



**East:** 395 Moreland Road, Hauppauge, NY 11788



**Central:** 1441 East Business Center Drive, Mt. Prospect, IL 60056



**West:** 4935 Southfront Road, Suite F, Livermore, CA 94550

---

## Mexico

### Headquarters

Festo Pneumatic, S.A.  
Av. Ceylán 3, Col. Tequesquahuac  
54020 Tlalnepantla, Edo. de México  
Call: 011 52 [55] 53 21 66 00  
Fax: 011 52 [55] 53 21 66 65  
Email: [festo.mexico@mx.festo.com](mailto:festo.mexico@mx.festo.com)  
[www.festo.com/mx](http://www.festo.com/mx)



---

## Canada

### Headquarters

Festo Inc.  
5300 Explorer Drive  
Mississauga, Ontario L4W 5G4  
Call: 1.905.624.9000  
Fax: 1.905.624.9001  
Email: [info.ca@ca.festo.com](mailto:info.ca@ca.festo.com)  
[www.festo.com/ca](http://www.festo.com/ca)



---

## Festo Worldwide

Argentina Australia Austria Belarus Belgium Brazil Bulgaria Canada Chile China Colombia Croatia Czech Republic Denmark  
Estonia Finland France Germany Great Britain Greece Hong Kong Hungary India Indonesia Iran Ireland Israel Italy Japan  
Latvia Lithuania Malaysia Mexico Netherlands New Zealand Norway Peru Philippines Poland Romania Russia Serbia Singapore  
Slovakia Slovenia South Africa South Korea Spain Sweden Switzerland Taiwan Thailand Turkey Ukraine United States Venezuela

[www.festo.com](http://www.festo.com)