



- Bellows and curved jaw couplings
- Rigid and backlash-free transmission of torque
- Connecting shafts
- For synchronising toothed belt axes

Accessories for electrical positioning systems

Key features

At a glance

Bellows couplings

5 / 2.3-3

- The one-piece bellows coupling is suitable for rigid and backlash-free transmission of small and medium torques between electric motors and axes
- \varnothing 15 and 19 mm
- System product for positioning applications



Curved jaw couplings

5 / 2.3-3

- The three-part curved jaw coupling is suitable for rigid and backlash-free transmission of high torques between electric motors and axes
- \varnothing 15, 16, 30, 40, 42, 65 mm
- System product for positioning applications



Connecting shafts

5 / 2.3-9

- For synchronising toothed belt axes
- For torsion-resistant transmission of torques
- For slip-free transmission of an identical feed speed, i.e. when connecting a second axis
- Sizes: 25, 40, 63 mm



Couplings KSE

Type codes

		KSE	–	19	–	24	–	D06	–	D09
Type										
KSE	Bellows coupling									
	Curved jaw coupling									
Ø [mm]										
15	Ø 15 mm									
16	Ø 16 mm									
19	Ø 19 mm									
30	Ø 30 mm									
40	Ø 40 mm									
42	Ø 42 mm									
65	Ø 65 mm									
Overall length										
20	20 mm									
22	22 mm									
24	24 mm									
32	32 mm									
35	35 mm									
50	50 mm									
66	66 mm									
90	90 mm									
Hole D1										
Hole D2										

Couplings KSE

Technical data



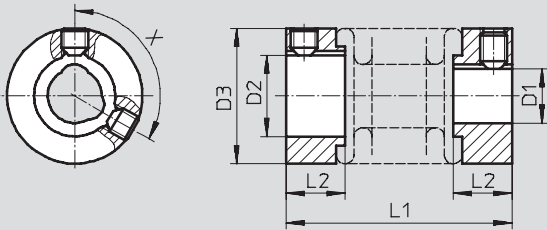
Bellows coupling KSE

∅ - Diameter
15 and 19 mm



General technical data		
Type	KSE-15	KSE-19
Mass moment of inertia [kg mm ²]	0.13	0.47
Tightening torque of locking screw [Nm]	1.5	1.5
Weight [g]	6	12
Materials	Hubs	Aluminium
	Bellows	Stainless steel

Dimensions and ordering data Download CAD data → www.festo.com/en/engineering



∅ [mm]	D1 ¹⁾ ∅ H7	D2 ∅ H7	D3 ∅	L1	L2	X	Transferable torque ²⁾ [Nm]	Part No.	Type
15	4	5	15	22	6.5	-	1	530 084	KSE-15-22-D04-D05
	4	6	15	22	6.5	-	1	540 750	KSE-15-22-D04-D06
	4	7	15	22	6.5	-	1	184 260	KSE-15-22-D04-D07
	4	9	15	22	6.5	-	1	184 262	KSE-15-22-D04-D09
	5	5	15	22	6.5	-	1	530 085	KSE-15-22-D05-D05
	5	6	15	22	6.5	-	1	540 751	KSE-15-22-D05-D06
	5	7	15	22	6.5	-	1	184 261	KSE-15-22-D05-D07
	5	9	15	22	6.5	-	1	529 953	KSE-15-22-D05-D09
19	6	6.35	19	24	7.5	120	1.5	530 086	KSE-19-24-D06-D06,35
	6	9	19	24	7.5	120	1.5	184 263	KSE-19-24-D06-D09

1) Tolerance field g6
2) For drive shafts with tolerance field h6

Couplings KSE

Technical data



Internal gear coupling KSE

∅ - Diameter
15 ... 65 mm



General technical data								
Type		KSE-15-20	KSE-16-20	KSE-30-32	KSE-30-35	KSE-40-66	KSE-42-50	KSE-65-90
Mass moment of inertia	[kg mm ²]	0.23	0.3	5,87	6.1	42.3	35.5	417
Tightening torque of locking screw	[Nm]	1.3	0.6	4	2.9	10.5	8	25
Weight	[g]	8	8	50	45	139	146	535
Materials	Hubs	Aluminium						
	Internal gear	Polyurethane						

Dimensions and ordering data Download CAD data → www.festo.com/en/engineering

KSE-15-20

1 Compress coupling to specified length only

∅	D1	D2	Torque transmitted	Part No.	Type
[mm]	∅	∅	[Nm]		
15	5	6	1.5	533 707	KSE-15-20-D05-D06

Couplings KSE

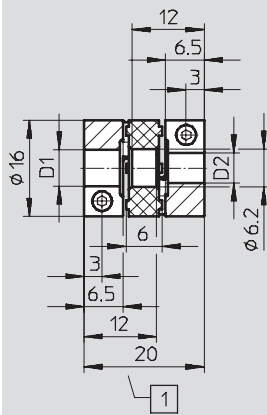
Technical data

FESTO

Dimensions and ordering data

Download CAD data → www.festo.com/en/engineering

KSE-16-20



1 Compress coupling to specified length only

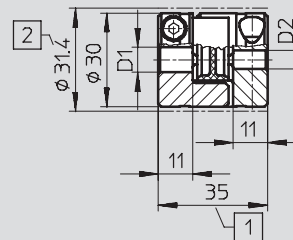
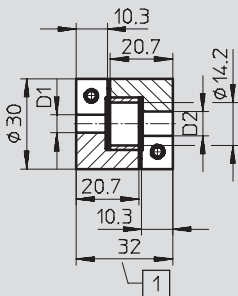
∅ [mm]	D1 ∅ H7	D2 ∅ H7	Torque transmitted [Nm]	Part No.	Type
16	5	6	1.0	543 419	KSE-16-20-D05-D06
	6	6	1.5	543 420	KSE-16-20-D06-D06

Dimensions and ordering data

Download CAD data → www.festo.com/en/engineering

KSE-30-32

KSE-30-35



1 Compress coupling to specified length only
2 Min. installation ∅ (interference profile of locking screws)

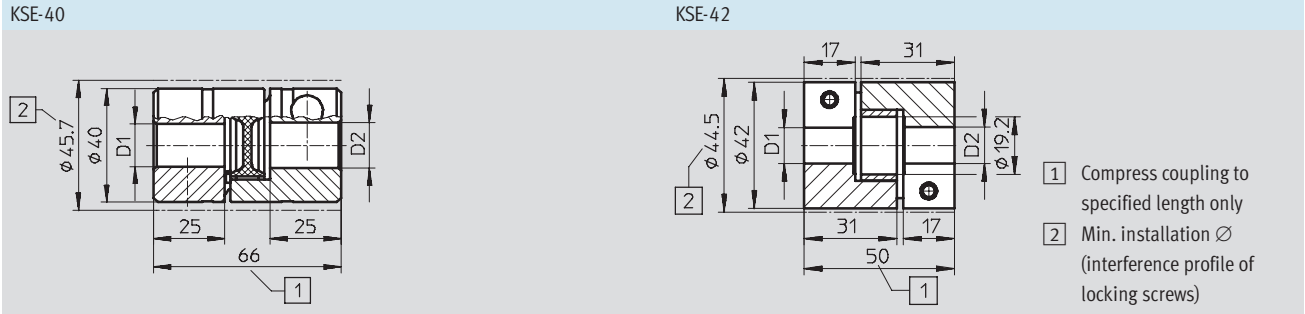
∅ [mm]	D1 ∅ H7	D2 ∅ H7	Torque transmitted [Nm]	Part No.	Type
30	6	8	7	533 708	KSE-30-32-D06-D08
	6.35	8	7	543 421	KSE-30-32-D06,35-D08
	8	8	10	643 422	KSE-30-32-D08-D08
	8	9	10	543 423	KSE-30-32-D08-D09
	6	6.35	7.5	530 087	KSE-30-35-D06-D06,35
	6.35	8	7.5	530 088	KSE-30-35-D06,35-D08
	6	9	7.5	530 941	KSE-30-35-D06-D09
	8	8	8	123 044	KSE-30-35-D08-D08
	8	10	8	123 050	KSE-30-35-D08-D10
	8	11	8	123 042	KSE-30-35-D08-D11
	8	12	8	123 043	KSE-30-35-D08-D12
	11	12	8.9	123 051	KSE-30-35-D11-D12

Couplings KSE

Technical data

FESTO

Dimensions and ordering data Download CAD data → www.festo.com/en/engineering



\varnothing [mm]	D1 \varnothing H7	D2 \varnothing H7	Torque transmitted [Nm]	Part No.	Type
40	11	11	17	530 090	KSE-40-66-D11-D11
	11	12	17	525 864	KSE-40-66-D11-D12
	12	19	17	529 952	KSE-40-66-D12-D19
	15	16	17	123 846	KSE-40-66-D15-D16
	15	19	17	123 844	KSE-40-66-D15-D19
	15	20	17	123 845	KSE-40-66-D15-D20
	15	24	17	176 033	KSE-40-66-D15-D24
	16	20	17	123 848	KSE-40-66-D16-D20
	19	20	17	123 847	KSE-40-66-D19-D20
	20	20	17	123 849	KSE-40-66-D20-D20
	XX ¹⁾	15	-	176 036	KSE-40-66-DXX-D15
XX ¹⁾	20	-	176 037	KSE-40-66-DXX-D20	
42	11	12	15	543 424	KSE-42-50-D11-D12
	12	12	17	533 709	KSE-42-50-D12-D12
	14	20	17	533 710	KSE-42-50-D14-D20

1) Hubs predrilled to $\varnothing 5$ mm

Couplings KSE

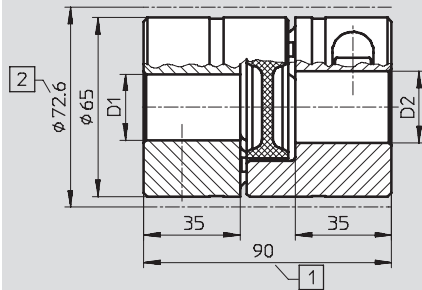
Technical data

FESTO

Dimensions and ordering data

Download CAD data → www.festo.com/en/engineering

KSE-65



- 1 Compress coupling to specified length only
- 2 Min. installation \varnothing (interference profile of locking screws)

\varnothing [mm]	D1 \varnothing H7	D2 \varnothing H7	Torque transmitted [Nm]	Part No.	Type
65	15	24	80.4	530 940	KSE-65-90-D15-D24
	20	25	86.6	176 035	KSE-65-90-D20-D25
	24	25	91.6	123 852	KSE-65-90-D24-D25
	25	25	92.8	123 853	KSE-65-90-D25-D25
	25	28	92.8	123 854	KSE-65-90-D25-D28
	XX ¹⁾	25	–	176 038	KSE-65-90-DXX-D25

1) Hubs predrilled to \varnothing 5 mm

Product Range and Company Overview

A Complete Suite of Automation Services

Our experienced engineers provide complete support at every stage of your development process, including: conceptualization, analysis, engineering, design, assembly, documentation, validation, and production.



Custom Automation Components
Complete custom engineered solutions



Custom Control Cabinets
Comprehensive engineering support and on-site services



Complete Systems
Shipment, stocking and storage services

The Broadest Range of Automation Components

With a comprehensive line of more than 30,000 automation components, Festo is capable of solving the most complex automation requirements.



Electromechanical
Electromechanical actuators, motors, controllers & drives



Pneumatics
Pneumatic linear and rotary actuators, valves, and air supply



PLCs and I/O Devices
PLC's, operator interfaces, sensors and I/O devices

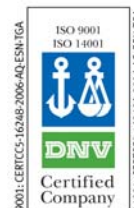
Supporting Advanced Automation... As No One Else Can!

Festo is a leading global manufacturer of pneumatic and electromechanical systems, components and controls for industrial automation, with more than 12,000 employees in 56 national headquarters serving more than 180 countries. For more than 80 years, Festo has continuously elevated the state of manufacturing with innovations and optimized motion control solutions that deliver higher performing, more profitable automated manufacturing and processing equipment. Our dedication to the advancement of automation extends beyond technology to the education and development of current and future automation and robotics designers with simulation tools, teaching programs, and on-site services.

Quality Assurance, ISO 9001 and ISO 14001 Certifications

Festo Corporation is committed to supply all Festo products and services that will meet or exceed our customers' requirements in product quality, delivery, customer service and satisfaction.

To meet this commitment, we strive to ensure a consistent, integrated, and systematic approach to management that will meet or exceed the requirements of the ISO 9001 standard for Quality Management and the ISO 14001 standard for Environmental Management.



© Copyright 2008, Festo Corporation. While every effort is made to ensure that all dimensions and specifications are correct, Festo cannot guarantee that publications are completely free of any error, in particular typing or printing errors. Accordingly, Festo cannot be held responsible for the same. For Liability and Warranty conditions, refer to our "Terms and Conditions of Sale", available from your local Festo office. All rights reserved. No part of this publication may be reproduced, distributed, or transmitted in any form or by any means, electronic, mechanical, photocopying or otherwise, without the prior written permission of Festo. All technical data subject to change according to technical update.



Printed on recycled paper at New Horizon Graphic, Inc., FSC certified as an environmentally friendly printing plant.

Festo North America

United States

Customer Resource Center

502 Earth City Expy., Suite 125
Earth City, MO 63045

For ordering assistance, or to find
your nearest Festo Distributor,

Call: 1.800.99.FESTO

Fax: 1.800.96.FESTO

Email: customer.service@us.festo.com

For technical support,

Call: 1.866.GO.FESTO

Fax: 1.800.96.FESTO

Email: product.support@us.festo.com

Headquarters

Festo Corporation
395 Moreland Road
P.O. Box 18023
Hauppauge, NY 11788
www.festo.com/us

Sales Offices

Appleton

N. 922 Tower View Drive, Suite N
Greenville, WI 54942

Boston

120 Presidential Way, Suite 330
Woburn, MA 01801

Chicago

1441 East Business Center Drive
Mt. Prospect, IL 60056

Dallas

1825 Lakeway Drive, Suite 600
Lewisville, TX 75057

Detroit - Automotive Engineering Center

2601 Cambridge Court, Suite 320
Auburn Hills, MI 48326

New York

395 Moreland Road
Hauppauge, NY 11788

Silicon Valley

4935 Southfront Road, Suite F
Livermore, CA 94550

Design and Manufacturing Operations



East: 395 Moreland Road, Hauppauge, NY 11788



Central: 1441 East Business Center Drive, Mt. Prospect, IL 60056



West: 4935 Southfront Road, Suite F, Livermore, CA 94550

Mexico

Headquarters

Festo Pneumatic, S.A.
Av. Ceylán 3, Col. Tequesquahuac
54020 Tlalnepantla, Edo. de México
Call: 011 52 [55] 53 21 66 00
Fax: 011 52 [55] 53 21 66 65
Email: festo.mexico@mx.festo.com
www.festo.com/mx



Canada

Headquarters

Festo Inc.
5300 Explorer Drive
Mississauga, Ontario L4W 5G4
Call: 1.905.624.9000
Fax: 1.905.624.9001
Email: info.ca@ca.festo.com
www.festo.com/ca



Festo Worldwide

Argentina Australia Austria Belarus Belgium Brazil Bulgaria Canada Chile China Colombia Croatia Czech Republic Denmark
Estonia Finland France Germany Great Britain Greece Hong Kong Hungary India Indonesia Iran Ireland Israel Italy Japan
Latvia Lithuania Malaysia Mexico Netherlands New Zealand Norway Peru Philippines Poland Romania Russia Serbia Singapore
Slovakia Slovenia South Africa South Korea Spain Sweden Switzerland Taiwan Thailand Turkey Ukraine United States Venezuela

www.festo.com