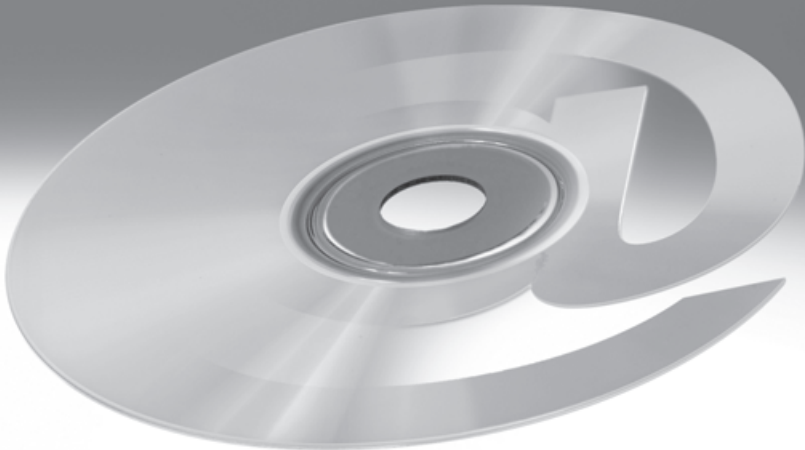


FluidDraw® software

FESTO



Product features			
Version	FluidDraw version		
	4 ¹⁾	S5 ¹⁾	P5
General			
CD-ROM incl. one licence	■	■	-
USB licence connector with 2 GB RAM	-	-	■
Network-compatible	■	■	■
File format	CT	CIRC	CIRC
Thumbnail/preview in Windows Explorer and file dialogues	-	■	■
Automatic and evaluation functions			
Bill of materials, optionally via project or selected sheets	□	■	■
Creating circuit diagrams for Festo modular products	□	■	■
Text translation, optionally for project or selected sheets	-	-	■
Electrical terminal diagram, cable diagram, cable list	-	-	■
Electrical contact schematic diagram	-	-	■
Collecting "unpositioned objects", e.g. electrical coils for inserted valves	-	-	■
Renumbering identifiers	-	-	■
Project management			
Straightforward list management	■	■	-
Project tree	-	□	■
Libraries and symbols			
Pneumatics and Festo symbols to ISO 1219-1	■	■	■
User-specific libraries	■	■	■
Creation of user-specific symbols	□	■	■
Electrical symbols to EN 60617	-	-	■
Product data			
Festo product catalogue	■	■	■
User-specific product databases	-	-	■
Circuit editor			
Cutting, pasting, grouping, copying, deleting	■	■	■
Aligning highlighted drawing elements and symbols	■	■	■
Rotating, scaling, mirroring	□	■	■
Arrangement: bringing to front or sending to back	-	■	■
Macro objects	-	■	■
User-friendly navigation between the equipment symbols	-	□	■
Equipment identification when inserting symbols	-	-	■
Customisable rules for equipment identification and cross-reference representation	-	-	■
Reversal of direction for electrical terminals and cable cores	-	-	■
Setting electrical bridges	-	-	■
Circuit testing			
Open connections, overlapping objects, duplicate cross-reference markers	■	■	■
Missing link targets	-	■	■
Missing or ambiguous assignments (terminals, cables, etc.)	-	-	■

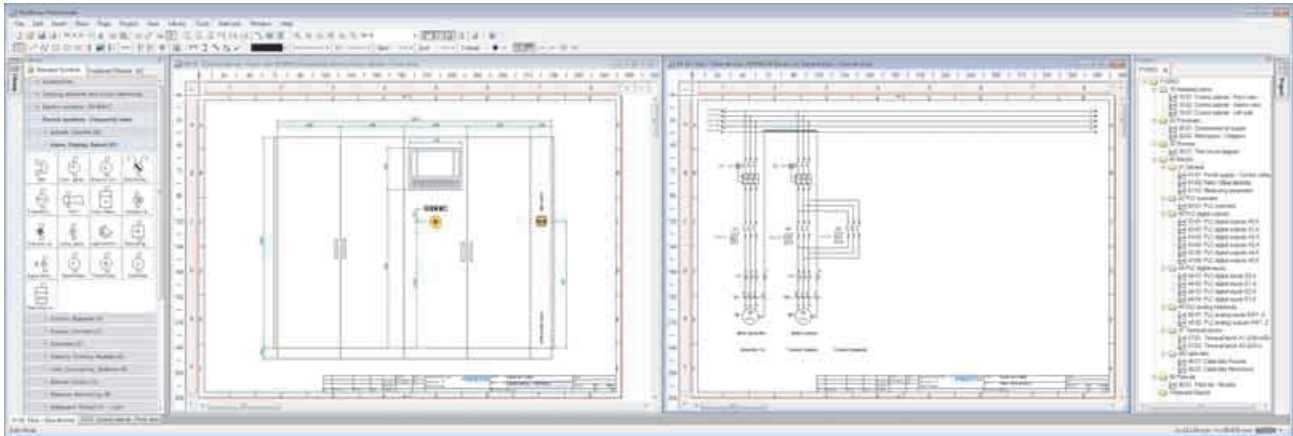
- Product feature included.
 - Product feature with restrictions.
 - Product feature not included.
- 1) No longer available.

Product features			
Version	FluidDraw version		
	4 ¹⁾	S5 ¹⁾	P5
User interface			
Circuit editor	■	■	■
Library window	■	■	■
Function diagram editor	■	■	■
Customisation of the file paths (version 4: INI file only)	□	■	■
Switching programming language (version 4: only at installation or in INI file)	□	■	■
Switching catalogue language (version 4: programming language = catalogue language)	□	■	■
Overview window: preview and navigation window	-	■	■
Project tree window (version S5: single-level project tree)	-	□	■
Drawing elements and function components			
Text, graphic	■	■	■
Function diagram	■	■	■
Bill of materials	■	■	■
Drawing frame	□	■	■
Line, square, circle, arc, ellipse	□	■	■
Attribute linking	-	■	■
Dimensioning, polyline, polygon, T-connectors	-	-	■
Termination points, electrical cables and terminals	-	-	■
Contact schematic diagram and cross-references	-	-	■
Line thicknesses	8	9	9
Line styles	4	4	4
Line colours (version 4: line colour of the drawing layer only)	8	all	all
Line ends	1	7	7
Fill colours	16	all	all
Drawing aids			
Grid and snap function for connection points	■	■	■
Snap function for drawing elements	-	■	■
Temporary display of auxiliary lines for aligning connection points	-	■	■
Data points for connecting lines	-	■	■
Ruler	-	-	■
Separate object and grid snap	-	-	■
Automatic connection of aligned connection points	-	-	■
Automatic integration of symbols into connecting cables	-	-	■
Drawing layers			
User-specific description text, toggle for display and editing	■	■	■
Option "Include hidden objects in bill of materials"	-	■	■
Quantity	8	255	255
Line thicknesses	8	9	9
Colours	1	16	all
Interfaces (export/import)			
Direct access to Festo product catalogue basket (offline)	■	■	■
Bill of materials: TXT, CSV	■	■	■
Circuit graphic import: DXF	■	■	■
Circuit graphic export: BMP, DXF, JPG, GIF, WMF, PNG, TIF (version 4: DXF and TIF only)	□	■	■
Direct transfer of the bill of materials to Festo Online Shop	-	■	■
Circuit graphic export: PDF	-	-	■
Terminal strips, cable lists, translation tables, product data: TXT, CSV	-	-	■
Technical data → Page/Internet	-	-	4

- Product feature included.
 - Product feature with restrictions.
 - Product feature not included.
- 1) No longer available.

Complete circuit documentation made easy

FluidDraw P5 with symbol library, layout sketch of control cabinet, electrical circuit diagram and project tree



Description

FluidDraw offers an intelligent editor for creating circuits and pneumatic circuit diagrams.

FluidDraw provides you with access to extensive symbol libraries.

The standardised symbols are grouped by product families.

You can place the required symbols in the circuit by dragging and dropping or by using the search function.

Alternatively, importing a Festo bill of materials (e.g. shopping basket) places the associated symbols on the desktop. All you need to do is arrange them and add the connecting lines. These functions provide a convenient way of creating electrical circuits.

Automatically generated lists such as terminal diagrams, cable diagrams and cable lists can be inserted anywhere in the project during the process.

The bill of materials generator collects all the attributes ascribed to the symbols such as part number, designation, type, etc. in the background. These attributes can be copied from the Festo catalogue or manually assigned. The relationships between the circuit symbol and item on the bill of materials are highlighted.

You can adapt the way the bill of materials is laid out on the screen or sent to the printer as per your requirements.

The equipment identifiers are always up-to-date. A context menu enables quick and easy navigation between the various equipment representations. Cross-references make them easier to find in the paper printouts. It is easy to create and dimension system diagrams or schematic diagrams for control cabinets and control consoles too.

Another highlight is the Autoconnect function. This function enables FluidDraw P5 to automatically connect aligned connection points or integrate symbols into existing connecting cables.

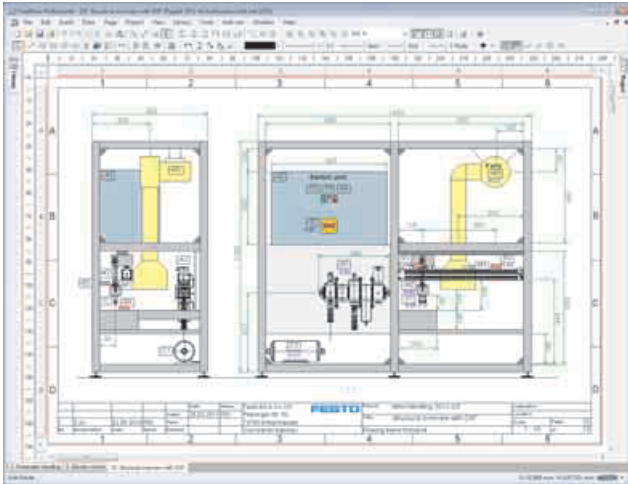
Product assignment and identification of connecting cables are also possible.

The auto-update function ensures that you always have the latest version of FluidDraw P5. Further options satisfy a wide range of user requirements, for example adjustment of the identification rules, text sizes and folder paths.

You organise your various sheets in a multi-level project tree. Any mistakes you make when creating the circuit diagrams will trigger a warning.

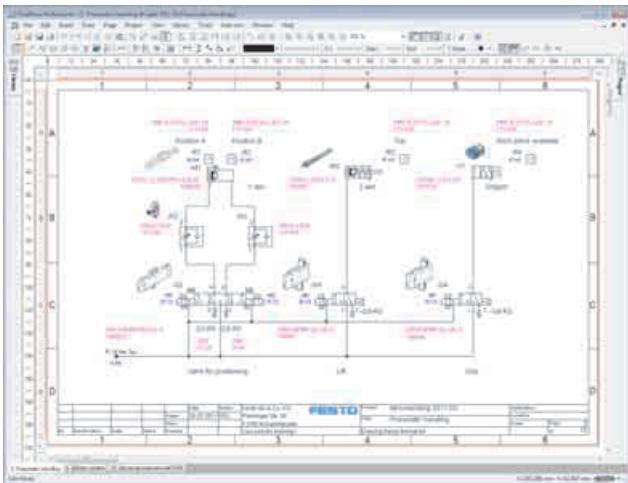
Functions

Advantages and program components



- Easy, user-friendly operator guidance
- Online help
- Zoom, grid, clipboard, navigation window, etc.
- Increased drawing accuracy permitting greater scope for zoom (max. 10000%)
- File format in XML syntax
- Direct access to ready-drawn symbols
- Comprehensive symbol library based on ISO 1219-1
- Extended management functions for user-specific symbol libraries
- Efficient storage of libraries (better performance in the network)
- Consistent separation of program and user files (fewer problems with permissions in the network)
- Explicit specification of folder paths (no hidden INI entries required)
- All attribute values can be displayed at any position as text references
- Simultaneous editing of multiple circuit diagrams
- Support for up to 255 drawing levels
- No internal restriction on the number of objects (support for extensive circuits and larger projects)
- Easy creation of macros
- Automatic creation of circuits for valve terminals and service unit combinations
- Equipment identifiers
- Highlighted symbol and associated bill of materials item
- Convenient printing functions
- Precise definition of the page boundaries when printing
- Direct access to the databases of the Festo catalogue (avoids interface problems with xDKI)

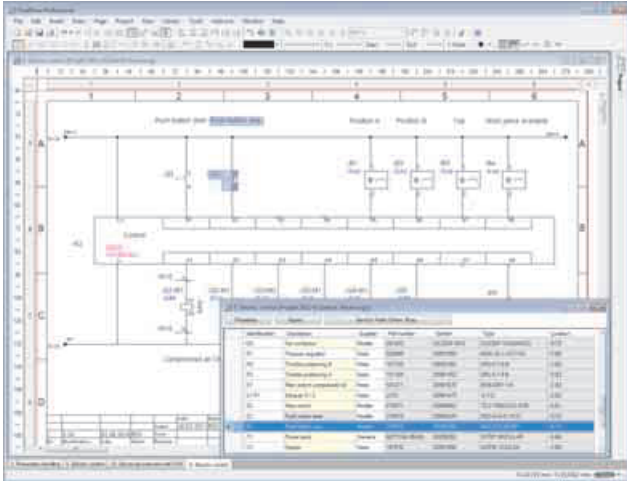
Editing



- Continuous rotation and scaling
- Intelligent grid with automatic overlaying of auxiliary lines for aligning symbols
- Improved automatic cable routing
- Manual setting of interpolation points for connecting lines
- New function to make drawing working lines easier
- Multiple window views of a drawing page can be displayed and edited at the same time
- Navigation window with selection of the page detail
- Extended drawing functions
- Basic graphic elements: lines with different arrowheads, rectangle, circle, ellipse, text, graphic
- Simultaneous editing of the geometric properties of highlighted objects
- Extended undo/redo function
- Free input and positioning of connection identifications

Functions

Electrical system



The following functions for electrical circuits guarantee complete documentation:

- Contact schematic diagram
- Termination points
- Terminals
- Cables (including "distributed" cables)
- Terminal diagram
- Cable diagram
- Cable list

These evaluation lists are updated each time the user performs an action.

When using valves, the associated electrical coils are collected in "unpositioned objects" so that no electrical connections are forgotten.

Import/export formats

Circuit (graphic):

- BMP, DXF, GIF, JPG, PDF, PNG, TIF, WMF

Bills of materials, product data and language tables:

- TXT, CSV

Festo products:

- Offline shopping basket (import)
- Product catalogue
- Online shopping basket (export)

Projects

- Clearer representation of the project files
- Improved management of the project attributes
- Copying the globally defined drawing frame to new pages

Bill of materials

- Bill of materials representation
- Extended functions for selecting the listed project files
- Printing of long lists over multiple pages
- Direct editing of attributes in the bill of materials
- Search function for components associated with the respective list entry
- Interface to the Festo online shopping basket

Product databases

In FluidDraw P5, customised product data, symbols and macros can be organised and used in user libraries. Just like the Festo product catalogue included in FluidDraw P5.

As well as pneumatic symbols, the FluidDraw P5 symbol library also contains a large number of electrical symbols according to EN 60617.

Frequently used symbols are arranged in accordance with the function identifier according to EN 81346-2.

Multilingual documents

Translation tables enable the project documentation to be output in a wide range of languages. A simple interface allows language texts to be exported/imported.

You can also "collect" all the texts used in a project in a translation table.

Translation tables can also be created, maintained and used directly in FluidDraw P5.

Licence

FluidDraw P5 licences are supplied on a USB licence connector with 2 GB RAM.

Licences can be purchased retrospectively for existing licence connectors. FluidDraw P5 licences are network licences. The number of licences determines how many times FluidDraw P5 can be used simultaneously in a network.

System requirements

- ≥ 512 MB RAM (2000/XP)
- ≥ 1 GB RAM (VISTA/7)
- USB interface

Compatible with:

- Windows 2000
- Windows XP
- Windows VISTA
- Windows 7
- Windows 8
- Windows 10
- 32-bit version
- 64-bit version

Ordering data

Ordering data				
	Designation	Scope of delivery	Part No.	Type
	Software	Software USB licence connector with 2 GB RAM 1 network licence	570740	GSWF-U1-FD-P5-UN-1

Ordering table					
			Condi- tions	Code	Entry code
M	Module no.	571731			
	Function	Software		GSWF	GSWF
	Medium	Licence file		-LF	
		USB licence connector with 2 GB RAM		-U1	
	Application	FluidDraw		-FD	-FD
	Version	Professional		-P	-P
	Version number	Version 5		5	5
	Licence protection	Registration	1	-R	
		USB connector	2	-U	
	Licence	Initial network licence for existing licence connector without FluidDraw	1	E	
		Network licence		N	
	Number of licences	1 ... 99		-...	

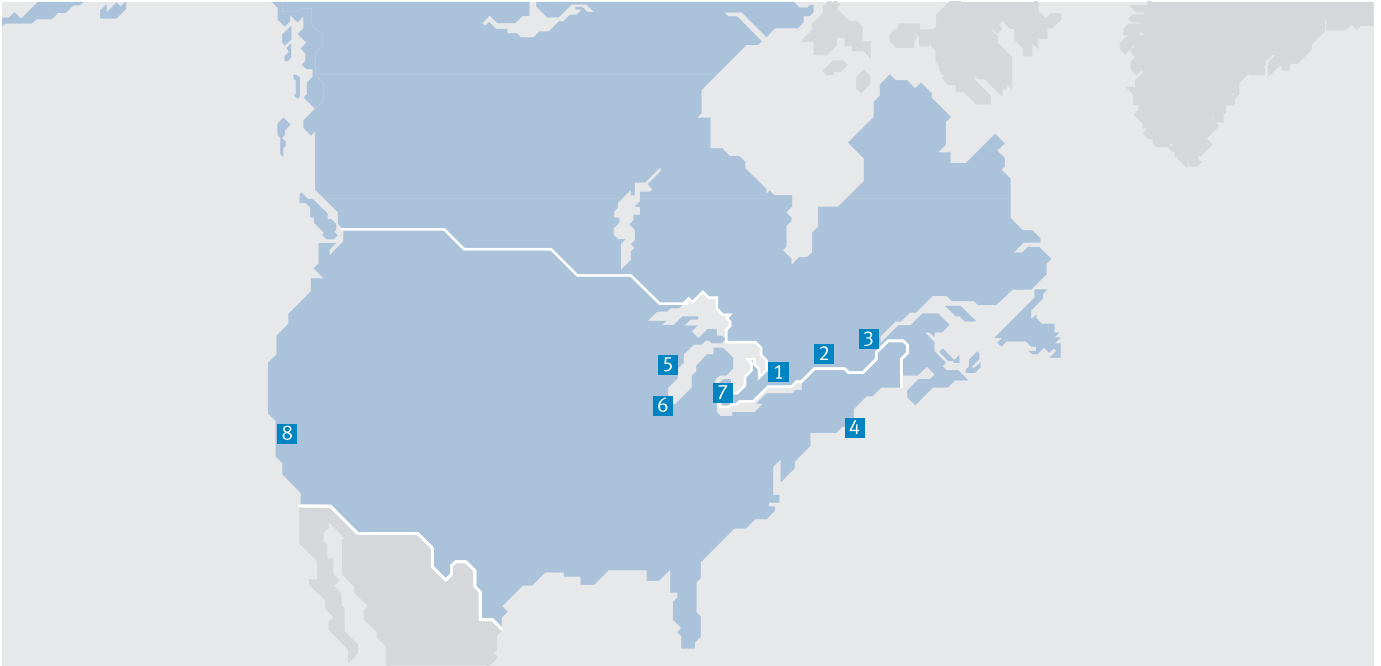
- 1** -R, E Only in conjunction with medium LF
- 2** -U Only in conjunction with medium U1

- M** Mandatory data
- O** Options

Transfer order code

571731 GSWF - U1 - FD - P5 - UN - 1

Festo North America



**1 Festo Canada
Headquarters
Festo Inc.**
5300 Explorer Drive
Mississauga, ON
L4W 5G4

2 Montréal
5600, Trans-Canada
Pointe-Claire, QC
H9R 1B6

3 Québec City
2930, rue Watt#117
Québec, QC
G1X 4G3



**4 Festo United States
Headquarters
Festo Corporation**
395 Moreland Road
Hauppauge, NY
11788

5 Appleton
North 922 Tower View Drive, Suite N
Greenville, WI
54942

7 Detroit
1441 West Long Lake Road
Troy, MI
48098

6 Chicago
85 W Algonquin - Suite 340
Arlington Heights, IL
60005

8 Silicon Valley
4935 Southfront Road, Suite F
Livermore, CA
94550

Festo Regional Contact Center

Canadian Customers

Commercial Support:
Tel: 1 877 GO FESTO (1 877 463 3786)
Fax: 1 877 FX FESTO (1 877 393 3786)
Email: festo.canada@ca.festo.com

Technical Support:
Tel: 1 866 GO FESTO (1 866 463 3786)
Fax: 1 877 FX FESTO (1 877 393 3786)
Email: technical.support@ca.festo.com

USA Customers

Commercial Support:
Tel: 1 800 99 FESTO (1 800 993 3786)
Fax: 1 800 96 FESTO (1 800 963 3786)
Email: customer.service@us.festo.com

Technical Support:
Tel: 1 866 GO FESTO (1 866 463 3786)
Fax: 1 800 96 FESTO (1 800 963 3786)
Email: product.support@us.festo.com

Subject to change

Internet: www.festo.com/us