

Round cylinder DSNU-S

FESTO



Festo Core Range
Solves the majority of your automation tasks

Worldwide: Quickest delivery – wherever, whenever
Simply good: Expected high Festo quality
Fast: Easy and fast to select

With the Festo Core Range, we have selected the most important products and functions from our broad product catalogue, and added the quickest delivery.

The Core Range offers you the best value for your automation tasks.

Just look
for the
star!

Key features

At a glance

DSNU-S-8 ... 16

- Cylinder barrel made of stainless steel
- Short end cap made of wrought aluminium alloy
- Space-saving



DSNU-S-20 ... 25

- Cylinder barrel made of stainless steel
- End cap made of wrought aluminium alloy with short thread
- Space-saving



Space-saving mounting

- Overall width reduced by up to 40%
- Overall length up to 3.5 cm shorter



Cushioning types

Cushioning P

Operating mode

- The drive is fitted with elastic polymer end-position cushioning

Application

- Small loads
- Low speeds
- Low impact energies

Advantages

- No adjustment required
- Saves time

Cushioning PPS

- The drive is fitted with self-adjusting end-position cushioning

- Small to medium loads
- Low to medium speeds
- Medium impact energies

- No adjustment required
- Saves time
- Powerful

For manufacturing lithium-ion batteries

DSNU-S-...-F1A

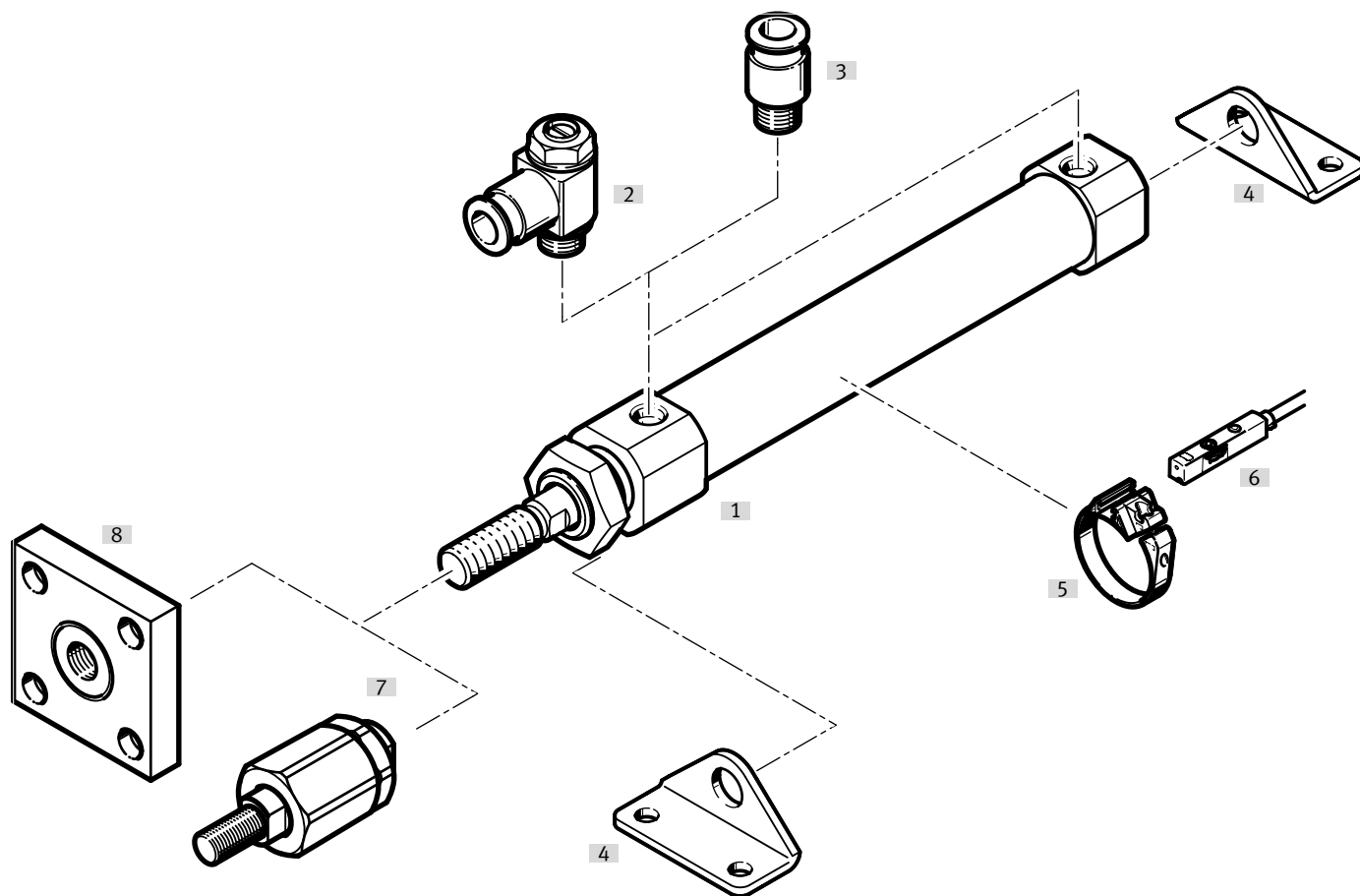
Recommended for production plants for manufacturing lithium-ion batteries. Metals with more than 1% by mass of copper, zinc or nickel are excluded from use. Exceptions are nickel in steel, chemically nickel-plated surfaces, printed circuit boards, cables, electrical plug connectors and coils.

Accessories

Your Festo contact partner can provide information about which accessories are suitable for manufacturing lithium-ion batteries.

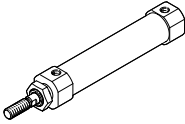
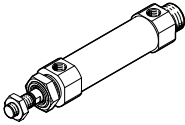
Peripherals overview

DSNU-S...



Mounting attachments and accessories		Piston diameter	Description	→ Page/ Internet
[1]	Round cylinder DSNU-S			
[2]	One-way flow control valve GRLA/GRLZ	8 ... 25	For regulating speed	19
[3]	Push-in fitting QS	8 ... 25	For connecting tubing with standard O.D.	qs
[4]	Foot mounting HBN-S/HBN-S-...-F1A	8 ... 25	For bearing or end caps	16
[5]	Mounting kit SMBR	8 ... 25	Via proximity switch and position transmitter	18
[6]	Proximity switch SMT/SDBT	8 ... 25	Can be integrated into the cylinder profile	18
	Position transmitter SDAS/SDAT/SMAT	8 ... 25	<ul style="list-style-type: none"> Continuously senses the position of the piston Has an analogue output 	18
[7]	Self-aligning rod coupler FK/DARP	8 ... 25	To compensate for radial and angular deviations	17
[8]	Coupling piece KSG	12 ... 25	To compensate for radial deviations	17

Product range overview

Function	Version	Piston diameter [mm]	Stroke ¹⁾ [mm]	Variable stroke ¹⁾²⁾ [mm]	Cushioning		Position sensing	For manufacturing lithium-ion batteries F1A	→ Page/ Internet
					Fixed P	Self-adjusting PPS			
Double-acting	DSNU-S...-MQ – End cap with lateral supply port								
		8	10, 15, 20, 25, 30, 40, 50, 60, 80, 100	1 ... 100	■	■ From Ø 16	■	■	5
		12	10, 15, 20, 25, 30, 40, 50, 60, 80, 100, 125, 150	1 ... 150					
		16	10, 15, 20, 25, 30, 40, 50, 60, 80, 100, 125, 150, 200	1 ... 200					
DSNU-S...-MX – End cap with mounting thread									
	20	10, 15, 20, 25, 30, 40, 50, 60, 80, 100, 125, 150, 200	1 ... 200	■	■	■	■	5	
	25								

1) The cylinders are also available with longer strokes on request
 2) Cylinders with position sensing require a minimum stroke of 10 mm to ensure reliable sensing

Type codes

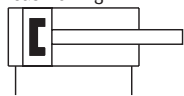
DSNU-S-...

001	Series
DSNU	Round cylinder, double-acting, based on ISO 6432
002	Design type
S	Short
003	Piston diameter [mm]
8	8
12	12
16	16
20	20
25	25
004	Stroke [mm]
...	1 ... 200

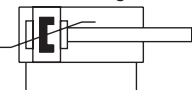
005	Cushioning
PPS	Pneumatic cushioning, self-adjusting at both ends
P	Elastic cushioning rings/plates on both sides
006	Position sensing
A	For proximity sensor
007	Special material properties
F1A	Recommended for production facilities for the manufacture of lithium-ion batteries
008	Cylinder end cap
MQ	Transverse supply port, end cap
MX	Mounting thread, end cap

Datasheet

P cushioning



PPS cushioning



⌀ - Diameter
8 ... 25 mm

— - Stroke length
1 ... 200 mm



General technical data		8	12	16	20	25
Piston diameter		8	12	16	20	25
Pneumatic connection		M5			G1/8	
Piston rod thread		M4		M6	M8	M10x1.25
Stroke ¹⁾²⁾	[mm]	10, 15, 20, 25, 30, 40, 50, 60, 80, 100	10, 15, 20, 25, 30, 40, 50, 60, 80, 100, 125, 150	10, 15, 20, 25, 30, 40, 50, 60, 80, 100, 125, 150, 200		
Design	Piston					
	Piston rod					
	Cylinder barrel					
Operating mode		Double-acting				
Cushioning						
DSNU-S...-P		Elastic cushioning rings/pads at both ends				
DSNU-S...-PPS		-			Self-adjusting pneumatic end-position cushioning	
Cushioning length						
DSNU-S...-PPS	[mm]	-		12	15	17
Position sensing		Via proximity switch				
Type of mounting		Via accessories				
Mounting position		Any				

- 1) Cylinders with position sensing require a minimum stroke of 10 mm to ensure reliable sensing.
- 2) Also available with longer strokes on request.

Operating and environmental conditions		8	12	16	20	25
Piston diameter		8	12	16	20	25
Operating medium		Compressed air to ISO 8573-1:2010 [7:4:4]				
Note on the operating/pilot medium		Lubricated operation possible (in which case lubrication will always be required)				
Operating pressure ¹⁾						
	[MPa]	0.15 ... 1	0.15 ... 1	0.08 ... 1	0.08 ... 1	0.06 ... 1
	[bar]	1.5 ... 10	1.5 ... 10	0.8 ... 10	0.8 ... 10	0.6 ... 10
Ambient temperature ²⁾	[°C]	-20 ... +80				
Corrosion resistance class CRC ³⁾						
DSNU-S...		2 - Moderate corrosion stress				
DSNU-S...-F1A		0 - no corrosion stress				

- 1) The minimum operating pressure can be increased slightly after a longer rest period.
- 2) Note operating range of the proximity switches.
- 3) For additional information www.festo.com/x/topic/crc

Datasheet

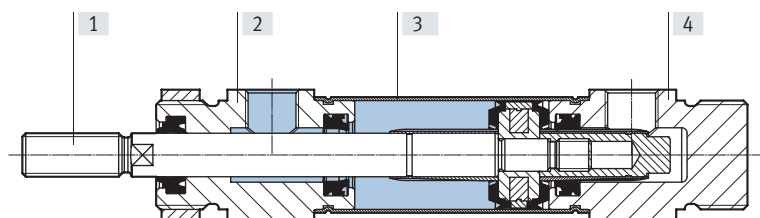
Forces [N] and impact energy [J]					
Piston diameter	8	12	16	20	25
Theoretical force at 6 bar, advancing	30.2	67.9	120.6	188.5	294.5
Theoretical force at 6 bar, retracting	22.6	50.9	103.7	158.3	247.4
Impact energy in the end positions ¹⁾	0.03	0.07	0.15	0.20	0.30

1) The values are reduced by approx. 50% at an ambient temperature of 80 °C
Flow-controlled compressed air is recommended to protect against overload.

Weight [g]					
Piston diameter	8	12	16	20	25
Product weight with 0 mm stroke	20	35.9	48.9	126	180.2
Additional weight per 10 mm stroke	2.4	4.2	4.8	7.2	11
Moving mass with 0 mm stroke	6.3	16.2	18.3	37.3	63.6
Moving mass per 10 mm stroke	1	2		4	6

Materials

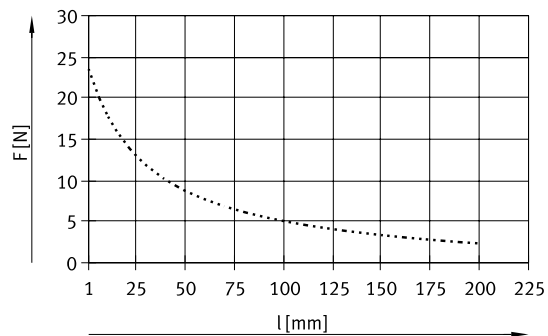
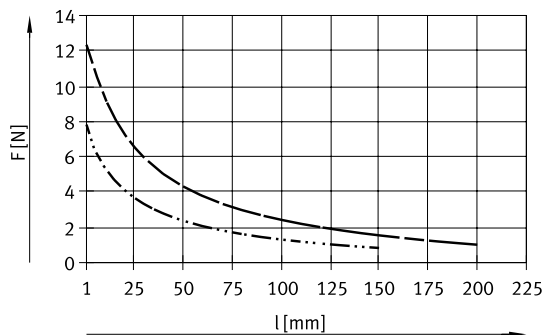
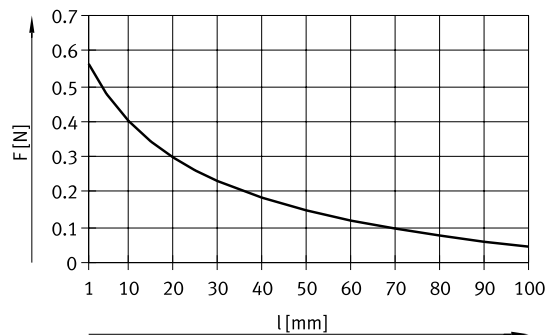
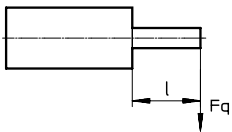
Sectional view



Round cylinder	8 ... 25
[1] Piston rod	High-alloy stainless steel
[2] Bearing cap	Anodised wrought aluminium alloy
[3] Cylinder barrel	High-alloy stainless steel
[4] End cap	Anodised wrought aluminium alloy
- Seals	TPE-U(PU)
LABS (PWIS) conformity	VDMA24364-B1/B2-L
Note on materials	RoHS-compliant
Cleanroom class	Class 6 to ISO 14644-1
DSNU-S-...-F1A	Metals with more than 1% by mass of copper, zinc or nickel are excluded from use. Exceptions are nickel in steel, chemically nickel-plated surfaces, printed circuit boards, cables, electrical plug connectors and coils

Datasheet

Max. lateral force F_q as a function of projection l



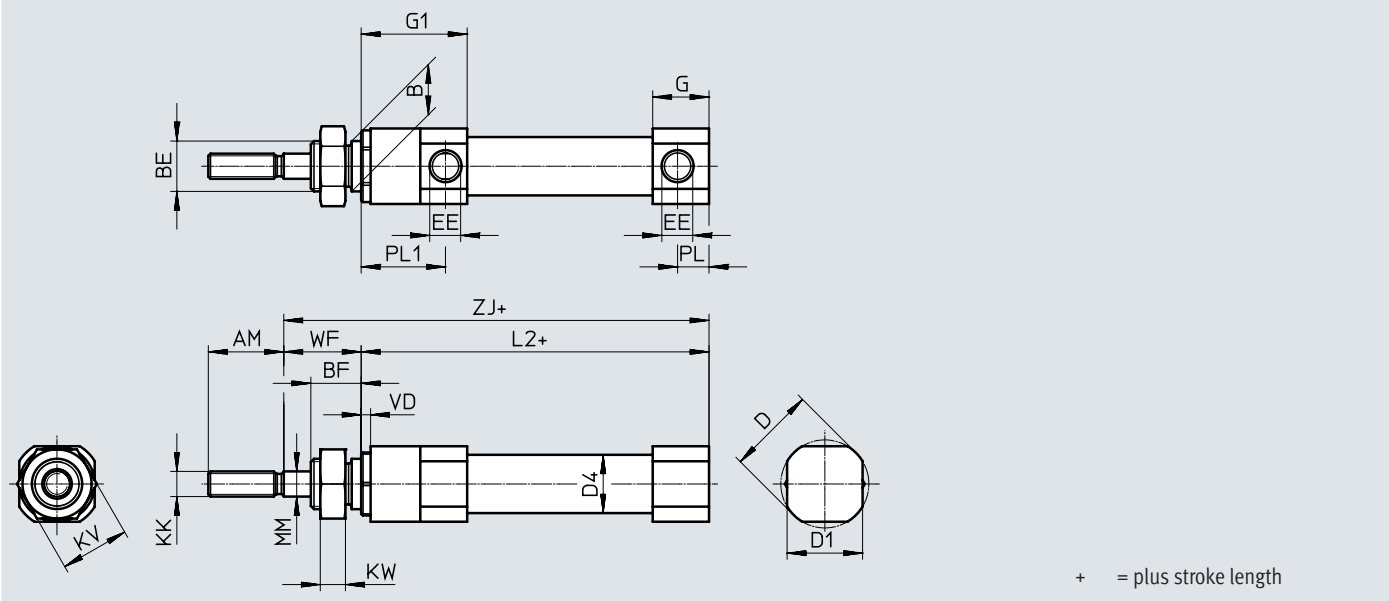
- DSNU-S-8
- · - · - · DSNU-S-12/16
- - - - - DSNU-S-20
- · · · · DSNU-S-25

Datasheet

Dimensions

Download CAD data → www.festo.com

DSNU-S-8



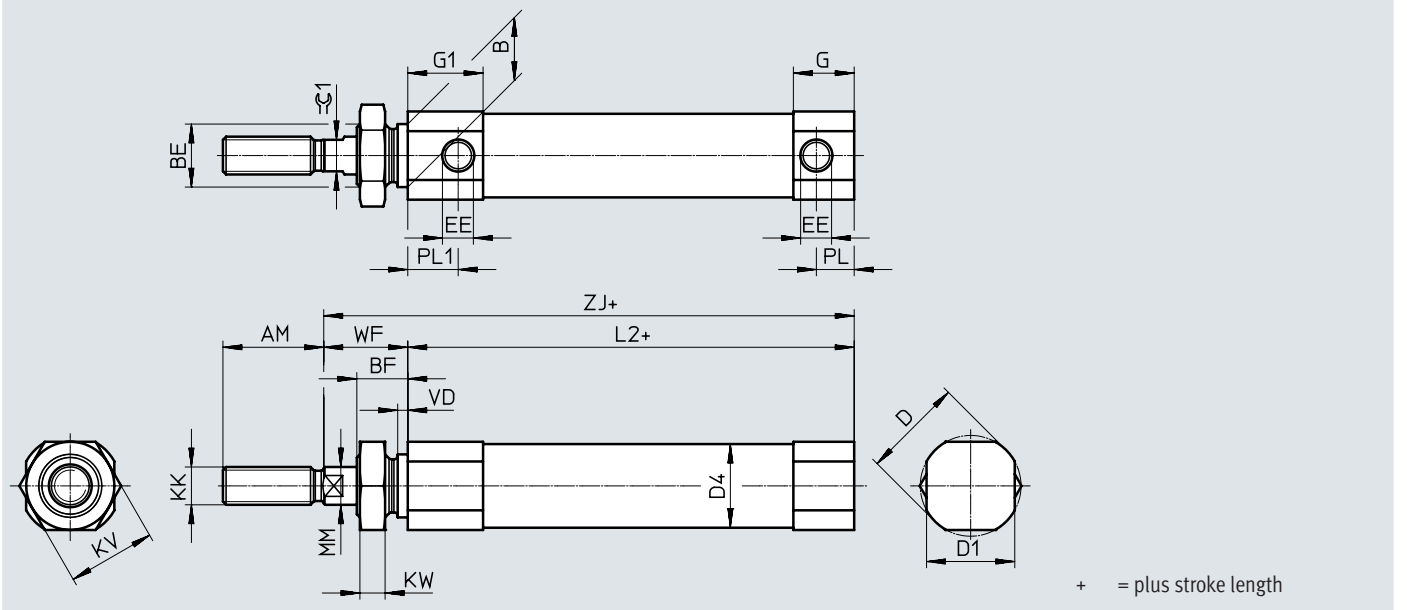
∅	AM	B	BE	BF	D	D1	D4
[mm]		h8			∅	∅	∅
8	12	8	M8x1	8	14	12	9.3
∅	EE	G	G1	KK	KV	KW	L2+
[mm]							
8	M5	9	16.9	M4	11	4	45.4
∅	MM	PL	PL1	VD	WF	ZJ	
[mm]	∅				±0.7	±1	
8	4	5	13.4	1.5	11.9	57.7	

Datasheet

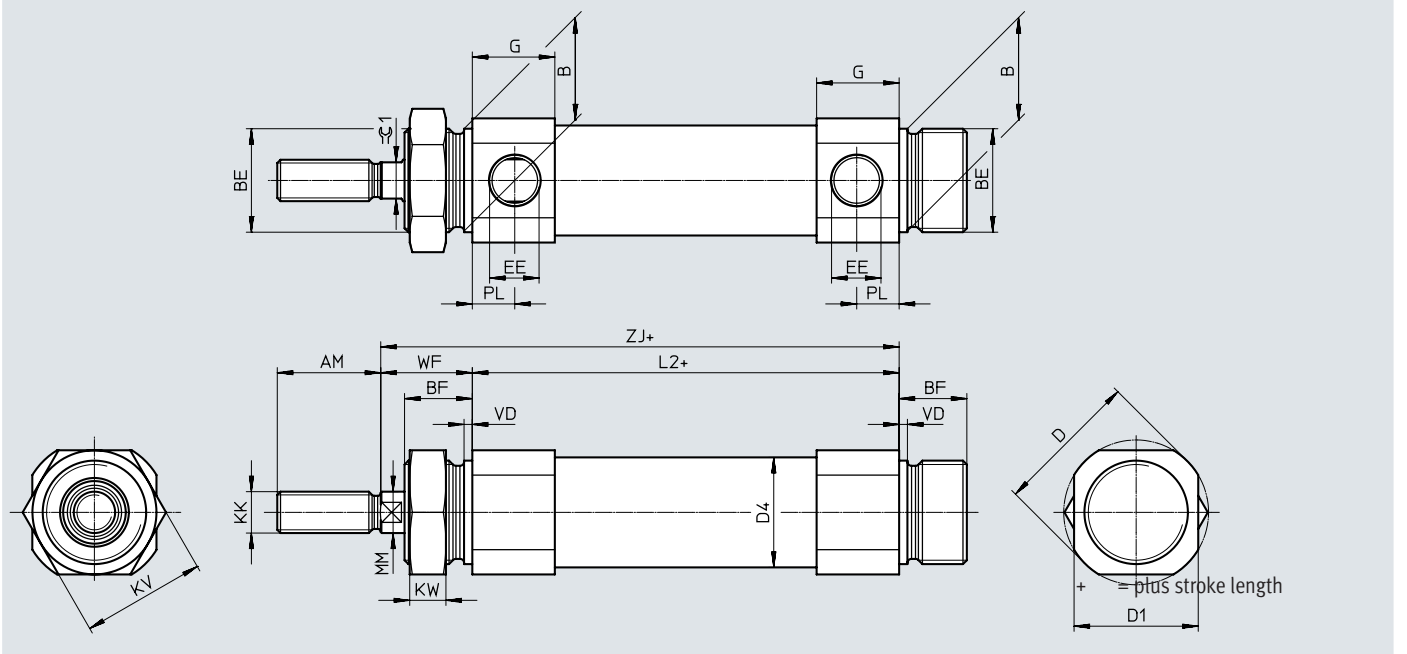
Dimensions

Download CAD data → www.festo.com

DSNU-S-12 ... 16



DSNU-S-20 ... 25



Datasheet

∅ [mm]	AM	B h8	BE	BF	D ∅	D1 ∅	D4 ∅	EE
12	16	10	M10x1	8	16	14	13.3	M5
16					20	18	17.3	
20	20	20	M20x1.5	13	28	24	21.3	G1/8
25	22				30	27	26.5	

∅ [mm]	G		G1	KK	KV	KW	L2+	
	DSNU-...-P	DSNU-...-PPS					DSNU-...-P	DSNU-...-PPS
12	9.7	–	12	M6	14	4	46	–
16	11.2	9.7	11.2				45.5	57
20	16	16	–	M8	24	7	57.6	57.6
25	16.8	16.8	–	M10x1.25			60.3	60.3

∅ [mm]	MM ∅	PL	PL1	VD	WF	ZJ ±1		=G1
						DSNU-...-P	DSNU-...-PPS	
12	6	6	8	1.5	13 ±0.7	59.3	–	5
16			7.5		12.9 ±0.75	58.8	70.3	
20	8	8.2	–	1.5	17.3 ±0.75	75.3	75.3	7
25	10	8.3			19.6 ±0.75	80.3	80.3	9

Datasheet

★ Core Range

Ordering data							
Piston diameter	Stroke	P	A	MQ	PPS		
		– Elastic cushioning rings/pads at both ends	– With position sensing	– End cap with lateral supply port	– Pneumatic cushioning at both ends, self-adjusting		
[mm]	[mm]	Part no.	Type	Part no.	Type		
8	10	5205897	DSNU-S-8-10-P-A-MQ	-			
	15	5205898	DSNU-S-8-15-P-A-MQ				
	20	5205899	DSNU-S-8-20-P-A-MQ				
	25	5205900	DSNU-S-8-25-P-A-MQ				
	30	5205902	DSNU-S-8-30-P-A-MQ				
	40	5205903	DSNU-S-8-40-P-A-MQ				
	50	5205904	DSNU-S-8-50-P-A-MQ				
	60	5205905	DSNU-S-8-60-P-A-MQ				
	80	5205906	DSNU-S-8-80-P-A-MQ				
100	5205907	DSNU-S-8-100-P-A-MQ					
12	10	★ 5211896	DSNU-S-12-10-P-A-MQ	-			
	15	★ 5211897	DSNU-S-12-15-P-A-MQ				
	20	★ 5211898	DSNU-S-12-20-P-A-MQ				
	25	★ 5211899	DSNU-S-12-25-P-A-MQ				
	30	★ 5211900	DSNU-S-12-30-P-A-MQ				
	40	★ 5211901	DSNU-S-12-40-P-A-MQ				
	50	★ 5211903	DSNU-S-12-50-P-A-MQ				
	60	★ 5211904	DSNU-S-12-60-P-A-MQ				
	80	★ 5211905	DSNU-S-12-80-P-A-MQ				
	100	★ 5211906	DSNU-S-12-100-P-A-MQ				
	125	★ 5211908	DSNU-S-12-125-P-A-MQ				
150	★ 5211909	DSNU-S-12-150-P-A-MQ					
16	10	★ 5216087	DSNU-S-16-10-P-A-MQ	-			
	15	★ 5216088	DSNU-S-16-15-P-A-MQ				
	20	★ 5216089	DSNU-S-16-20-P-A-MQ				
	25	★ 5216090	DSNU-S-16-25-P-A-MQ			★ 5217238	DSNU-S-16-25-PPS-A-MQ
	30	★ 5216091	DSNU-S-16-30-P-A-MQ			★ 5217239	DSNU-S-16-30-PPS-A-MQ
	40	★ 5216093	DSNU-S-16-40-P-A-MQ			★ 5217240	DSNU-S-16-40-PPS-A-MQ
	50	★ 5216094	DSNU-S-16-50-P-A-MQ			★ 5217241	DSNU-S-16-50-PPS-A-MQ
	60	★ 5216095	DSNU-S-16-60-P-A-MQ			★ 5217242	DSNU-S-16-60-PPS-A-MQ
	80	★ 5216096	DSNU-S-16-80-P-A-MQ			★ 5217243	DSNU-S-16-80-PPS-A-MQ
	100	★ 5216098	DSNU-S-16-100-P-A-MQ			★ 5217244	DSNU-S-16-100-PPS-A-MQ
	125	★ 5216099	DSNU-S-16-125-P-A-MQ			★ 5217245	DSNU-S-16-125-PPS-A-MQ
	150	★ 5216100	DSNU-S-16-150-P-A-MQ			★ 5217246	DSNU-S-16-150-PPS-A-MQ
	200	★ 5216101	DSNU-S-16-200-P-A-MQ			★ 5217248	DSNU-S-16-200-PPS-A-MQ

Datasheet

★ Core Range

Ordering data					
Piston diameter	Stroke	P	A	MX	PPS
[mm]	[mm]	Part no.	Type		
20	10	★ 5224633	DSNU-S-20-10-P-A-MX		
	15	★ 5224634	DSNU-S-20-15-P-A-MX		
	20	★ 5224635	DSNU-S-20-20-P-A-MX		
	25	★ 5224636	DSNU-S-20-25-P-A-MX		★ 5225836 DSNU-S-20-25-PPS-A-MX
	30	★ 5224637	DSNU-S-20-30-P-A-MX		★ 5225837 DSNU-S-20-30-PPS-A-MX
	40	★ 5224639	DSNU-S-20-40-P-A-MX		★ 5225838 DSNU-S-20-40-PPS-A-MX
	50	★ 5224641	DSNU-S-20-50-P-A-MX		★ 5225839 DSNU-S-20-50-PPS-A-MX
	60	★ 5224642	DSNU-S-20-60-P-A-MX		★ 5225840 DSNU-S-20-60-PPS-A-MX
	80	★ 5224643	DSNU-S-20-80-P-A-MX		★ 5225841 DSNU-S-20-80-PPS-A-MX
	100	★ 5224644	DSNU-S-20-100-P-A-MX		★ 5225842 DSNU-S-20-100-PPS-A-MX
	125	★ 5224645	DSNU-S-20-125-P-A-MX		★ 5225843 DSNU-S-20-125-PPS-A-MX
	150	★ 5224646	DSNU-S-20-150-P-A-MX		★ 5225844 DSNU-S-20-150-PPS-A-MX
	200	★ 5224647	DSNU-S-20-200-P-A-MX		★ 5225846 DSNU-S-20-200-PPS-A-MX
25	10	★ 5228227	DSNU-S-25-10-P-A-MX		
	15	★ 5228228	DSNU-S-25-15-P-A-MX		
	20	★ 5228229	DSNU-S-25-20-P-A-MX		
	25	★ 5228230	DSNU-S-25-25-P-A-MX		★ 5228452 DSNU-S-25-25-PPS-A-MX
	30	★ 5228231	DSNU-S-25-30-P-A-MX		★ 5228453 DSNU-S-25-30-PPS-A-MX
	40	★ 5228232	DSNU-S-25-40-P-A-MX		★ 5228454 DSNU-S-25-40-PPS-A-MX
	50	★ 5228233	DSNU-S-25-50-P-A-MX		★ 5228455 DSNU-S-25-50-PPS-A-MX
	60	★ 5228234	DSNU-S-25-60-P-A-MX		★ 5228456 DSNU-S-25-60-PPS-A-MX
	80	★ 5228235	DSNU-S-25-80-P-A-MX		★ 5228457 DSNU-S-25-80-PPS-A-MX
	100	★ 5228236	DSNU-S-25-100-P-A-MX		★ 5228458 DSNU-S-25-100-PPS-A-MX
	125	★ 5228237	DSNU-S-25-125-P-A-MX		★ 5228459 DSNU-S-25-125-PPS-A-MX
	150	★ 5228238	DSNU-S-25-150-P-A-MX		★ 5228460 DSNU-S-25-150-PPS-A-MX
	200	★ 5228239	DSNU-S-25-200-P-A-MX		★ 5228461 DSNU-S-25-200-PPS-A-MX

Ordering data – Modular product system

Ordering table								Enter code
Size	8	12	16	20	25	Conditions	Code	
Module no.	8112002	8112003	8112004	8112005	8112006			
Function	Double-acting round cylinder						DSNU	DSNU
Design	Space-saving						-S	-S
Piston diameter [mm]	8	12	16	20	25		-...	
Stroke ¹⁾ [mm]	1 ... 100	1 ... 150	1 ... 200	1 ... 200	1 ... 200		-...	
Cushioning	Elastic cushioning rings/pads at both ends						-P	
	-		Pneumatic cushioning, self-adjusting at both ends				-PPS	
Position sensing	Via proximity switch						-A	-A
Cylinder end cap	Lateral air connection, end cap			-			-MQ	
	-			Mounting thread, end cap			-MX	

1) Also available with longer strokes on request

Ordering data – Modular product system

Ordering table								
Size	8	12	16	20	25	Conditions	Code	Enter code
Module no.	8148785	8148786	8148787	8148788	8148789			
Function	Double-acting round cylinder						DSNU	DSNU
Design	Space-saving						-S	-S
Piston diameter [mm]	8	12	16	20	25		-...	
Stroke ¹⁾ [mm]	1 ... 100	1 ... 150	1 ... 200	1 ... 200	1 ... 200		-...	
Cushioning	Elastic cushioning rings/pads at both ends						-P	
	-		Pneumatic cushioning, self-adjusting at both ends				-PPS	
Position sensing	Via proximity switch						-A	-A
Special material properties	Recommended for production facilities for manufacturing lithium-ion batteries						-F1A	-F1A
Cylinder end cap	Lateral air connection, end cap			-			-MQ	
	-			Mounting thread, end cap			-MX	

1) Also available with longer strokes on request

Accessories

Foot mounting HBN-S...-F1A

Scope of delivery:

HBN-S...x1-...: 1 foot

HBN-S...x2-...: 2 feet and 1 nut

Material:

HBN-S:

Mounting: Galvanised steel

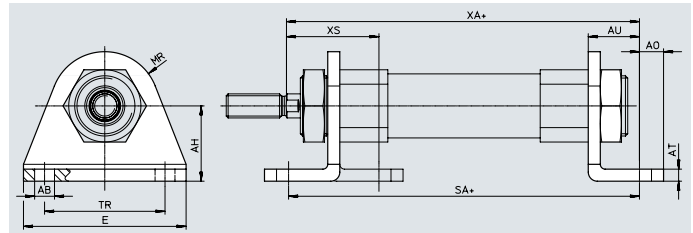
Nut: Galvanised steel

HBN-S...-F1A:

Mounting: High-alloy stainless steel

Nut: Chemically nickel-plated steel

RoHS-compliant



+ = plus stroke length

Dimensions and ordering data

For \varnothing [mm]	AB \varnothing	AH	AO	AT	AU ± 0.2	E	MR
8	4.5	10	5	2	11	35	7
12	5.5	15	6	3	14	42	10
16	5.5	15	6	3	14	42	10
20	6.6	25	8	4	17	54	18
25	6.6	25	8	4	17	54	18

For \varnothing [mm]	SA		TR ± 0.1	XA		XS
		DSNU-PPS			DSNU-PPS	
8	67.4	–	25	68.7	–	21.3
12	74	–	32	73.3	–	24.3
16	73.5	85	32	72.8	84.3	24.3
20	91.6	91.6	40	92.3	92.3	30.7
25	94.3	94.3	40	97.3	97.3	33

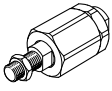
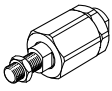
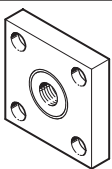
For \varnothing [mm]	Basic version CRC ¹⁾	Weight [g]	Part no.	Type
8, 10	1	12	★ 5407712	HBN-S-8x1
	4	12	8148809	HBN-S-8x1-F1A
12, 16	1	30	★ 5407772	HBN-S-12/16x1
	4	30	8148808	HBN-S-12/16x1-F1A
20, 25	1	77	★ 5407787	HBN-S-20/25x1
	4	77	8148811	HBN-S-20/25x1-F1A
	1	165	★ 5407847	HBN-S-20/25x2
	4	166	8148810	HBN-S-20/25x2-F1A

1) For additional information www.festo.com/x/topic/crc

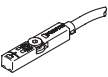
Accessories

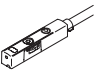
Ordering data – Piston rod attachments


Datasheets → Internet: piston rod attachment


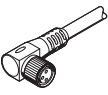
Designation	For \varnothing	Part no.	Type
Self-aligning rod coupler FK			
	8	6528	FK-M4
	12	2061	FK-M6
	16		
	20	2062	FK-M8
	25	6140	FK-M10x1.25
Self-aligning rod coupler DARP			
	8	8170110	DARP-M4-F
	12	8170115	DARP-M6-F
	16		
	20	8170116	DARP-M8-F
	25	8170119	DARP-M10P-F
Coupling piece KSG			
	12	-	
	16		
	20		
	25	32963	KSG-M10x1.25

Accessories

Ordering data – Proximity switch for T-slot, magneto-resistive							Datasheets → Internet: smt
	Type of mounting	Switching output	Electrical connection	Cable length [m]	Part no.	Type	
N/O							
	Inserted in the slot from above, flush with the cylinder profile, short design	PNP	Cable, 3-core	2.5	★ 574335	SMT-8M-A-PS-24V-E-2.5-OE	
			Cable, 2-core	5	★ 8165237	SMT-8M-A-ZS-24V-E-5.0-OE	
			Plug M8x1, 3-pin	0.3	★ 574334	SMT-8M-A-PS-24V-E-0.3-M8D	
		NPN	Cable, 3-core	2.5	★ 574338	SMT-8M-A-NS-24V-E-2.5-OE	
			Plug M8x1, 3-pin	0.3	★ 574339	SMT-8M-A-NS-24V-E-0.3-M8D	

Ordering data – Proximity switch for T-slot, magnetic Hall							Datasheets → Internet: sdbt
	Type of mounting	Switching output	Electrical connection	Cable length [m]	Part no.	Type	
N/O or N/C contact, switchable							
	Inserted in the slot from above, flush with the cylinder profile, short design	PNP, switchable to NPN	Plug M8x1, 3-pin	0.3	★ 8059120	SDBT-MSX-1L-PU-E-0.3-N-M8	
			Cable, 3-core	2.5	★ 8059121	SDBT-MSX-1L-PU-E-2.5-N-LE	
		NPN, switchable to PNP	Plug M8x1, 3-pin	0.3	★ 8059123	SDBT-MSX-1L-NU-E-0.3-N-M8	
			Cable, 3-core	2.5	★ 8059124	SDBT-MSX-1L-NU-E-2.5-N-LE	

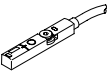
Ordering data – Mounting kits for proximity switches SMT/SDBT				Datasheets → Internet: smbr		
Designation	For ∅		Part no.	Type		
Mounting kit SMBR-8						
	8		175091	SMBR-8-8		
	12		★ 175093	SMBR-8-12		
	16		★ 175094	SMBR-8-16		
	20		★ 175095	SMBR-8-20		
	25		★ 175096	SMBR-8-25		

Ordering data – Connecting cables						Datasheets → Internet: nebu
	Electrical connection, left	Electrical connection, right	Cable length [m]	Part no.	Type	
	Straight socket, M8x1, 3-pin	Cable, open end, 3-core	2.5	★ 541333	NEBU-M8G3-K-2.5-LE3	
			5	★ 541334	NEBU-M8G3-K-5-LE3	
	Angled socket, M8x1, 3-pin	Cable, open end, 3-core	2.5	★ 541338	NEBU-M8W3-K-2.5-LE3	
			5	★ 541341	NEBU-M8W3-K-5-LE3	

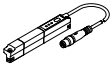
Position transmitter

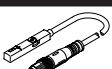
The position transmitter continuously senses the position of the piston.


It has an analogue output with an output signal relative to the piston position.

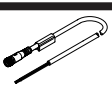
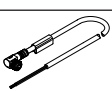
Ordering data – Position transmitter for T-slot							Datasheets → Internet: sdas
	Position measuring range	Description	Type of mounting	Electrical connection	Cable length [m]	Part no.	Type
	≤ 52	Choice of two operating modes: <ul style="list-style-type: none"> two adjustable switching outputs IO-Link® 	Inserted in the slot from above	Plug M8x1, 4-pin, in-line	0.3	8063974	SDAS-MHS-M40-1L-PNLK-PN-E-0.3-M8

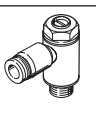
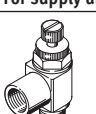
Accessories

Ordering data – Position transmitter for T-slot								Datasheets → Internet: sdat
	Position measuring range	Analogue output		Type of mounting	Electrical connection	Cable length [m]	Part no.	Type
		[V]	[mA]					
	0 ... 50	–	4 ... 20	Inserted in the slot from above	Plug M8x1, 4-pin, in-line	0.3	1531265	SDAT-MHS-M50-1L-SA-E-0.3-M8
	0 ... 80						1531266	SDAT-MHS-M80-1L-SA-E-0.3-M8
	0 ... 100						1531267	SDAT-MHS-M100-1L-SA-E-0.3-M8
	0 ... 125						1531268	SDAT-MHS-M125-1L-SA-E-0.3-M8
	0 ... 160						1531269	SDAT-MHS-M160-1L-SA-E-0.3-M8

Ordering data – Position transmitter for T-slot								Datasheets → Internet: smat
	Position measuring range	Analogue output		Type of mounting	Electrical connection	Cable length [m]	Part no.	Type
		[V]	[mA]					
	0 ... 40	0 ... 10	–	Inserted in the slot from above	Plug M8x1, 4-pin, in-line	0.3	553744	SMAT-8M-U-E-0.3-M8D

Ordering data – Mounting kits for position transmitters SDAS/SDAT/SMAT				Datasheets → Internet: smbr
Designation	For ø	Part no.	Type	
Mounting kit SMBR-8				
	8	175091	SMBR-8-8	
	12	★ 175093	SMBR-8-12	
	16	★ 175094	SMBR-8-16	
	20	★ 175095	SMBR-8-20	
	25	★ 175096	SMBR-8-25	

Ordering data – Connecting cables						Datasheets → Internet: nebu
	Electrical connection, left	Electrical connection, right	Cable length [m]	Part no.	Type	
	Straight socket, M8x1, 4-pin	Cable, open end, 4-core	2.5	541342	NEBU-M8G4-K-2.5-LE4	
			5	541343	NEBU-M8G4-K-5-LE4	
	Angled socket, M8x1, 4-pin	Cable, open end, 4-core	2.5	541344	NEBU-M8W4-K-2.5-LE4	
			5	541345	NEBU-M8W4-K-5-LE4	

Ordering data – One-way flow control valves					Datasheets → Internet: grl
	Connection Thread	For tubing O.D.	Material	Part no.	Type
For exhaust air					
	M5	3	Metal design	★ 193137	GRLA-M5-QS-3-D
		4		★ 193138	GRLA-M5-QS-4-D
		6		★ 193139	GRLA-M5-QS-6-D
	G1/8	3		★ 193142	GRLA-1/8-QS-3-D
		4		★ 193143	GRLA-1/8-QS-4-D
		6		★ 193144	GRLA-1/8-QS-6-D
		8		★ 193145	GRLA-1/8-QS-8-D
		For supply air			
	M5	3	Metal design	★ 193153	GRLZ-M5-QS-3-D
		4		★ 193154	GRLZ-M5-QS-4-D
		6		★ 193155	GRLZ-M5-QS-6-D
	G1/8	3		★ 193156	GRLZ-1/8-QS-3-D
		4		★ 193157	GRLZ-1/8-QS-4-D
		6		★ 193158	GRLZ-1/8-QS-6-D
		8		★ 193159	GRLZ-1/8-QS-8-D

Festo - Your Partner in Automation



1 Festo Inc.
5300 Explorer Drive
Mississauga, ON L4W 5G4
Canada

Festo Customer Interaction Center
Tel: 1 877 463 3786
Fax: 1 877 393 3786
Email: customer.service.ca@festo.com



2 Festo Pneumatic
Av. Ceylán 3,
Col. Tequesquináhuac
54020 Tlalnepantla,
Estado de México

Multinational Contact Center
01 800 337 8669
ventas.mexico@festo.com



3 Festo Corporation
1377 Motor Parkway
Suite 310
Islandia, NY 11749

Festo Customer Interaction Center
1 800 993 3786
1 800 963 3786
customer.service.us@festo.com



4 Regional Service Center
7777 Columbia Road
Mason, OH 45040

Connect with us



www.festo.com/socialmedia



www.festo.com

Subject to change