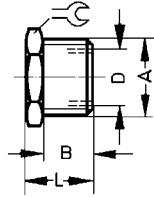
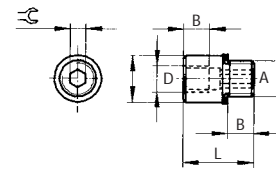


### Reducing Bushing Type D-... With Sealing Ring



D-M5i-M7a-ISK



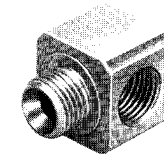
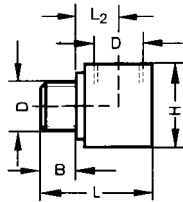
= wrench size (mm)



Order Number		Thread D	Thread A	Material	Weight lb / kg	Dimensions		
Part No.	Type					B in / mm	L in / mm	 in / mm
30980	D-M3i-M5 a-S9*	M 3	M 5	X12CrNiS188	0.0022 / 0.001	0.16 / 4	0.24 / 6	0.31 / 8
161359	D-M5i-M7 a-ISK	M 5	M 7	Copper, Zinc, Nickel Plated	0.007 / 0.003	0.20 / 5	0.53 / 13.5	0.12 / 3
3842	D-M5i-1/8 a	M 5 (0.24 in / 6 mm deep)	G 1/8 ISO	Al	0.022 / 0.010	0.20 / 5	0.41 / 10.3	0.51 / 13
3577	D-1/8i-1/4 a	G 1/8 ISO	G 1/4 ISO	Brass	0.018 / 0.008	0.18 / 4.5	0.43 / 10.8	0.67 / 17
3581	D-1/4i-3/8 a	G 1/4 ISO	G 3/8 ISO		0.031 / 0.014	0.33 / 8.5	0.59 / 14.9	0.75 / 19
28446	D-1/4-1/2 a	G 1/4 ISO	G 1/2 ISO					
3585	D-3/8i-1/2 a	G 3/8 ISO	G 1/2 ISO		0.055 / 0.025	0.45 / 11.5	0.78 / 19.9	0.94 / 24
3588	D-1/2i-3/4 a	G 1/2 ISO	G 3/4 ISO		0.099 / 0.045	0.47 / 12	0.88 / 22.4	1.26 / 32
9168	D-3/4i-1 a	G 3/4 ISO	G 1 ISO		0.121 / 0.055	0.51 / 13	0.83 / 21	1.42 / 36
7865	D-1/8i-1/4 a-NPT	1/8 NPT	1/4 NPT		0.050 / 0.023	0.51 / 13	0.94 / 24	0.67 / 17

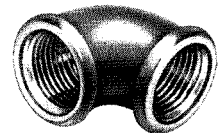
\*Corrosion and acid resistant design.

### Elbow Type G-...



G-1/2-I/I  
G-3/4-I/I

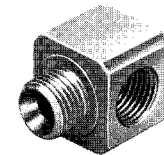
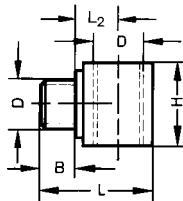
M 5 to 3/8



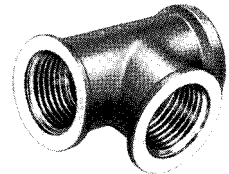
1/2 to 3/4

Order Number		Thread D	Orifice Size in / mm	Material	Weight lb / kg	Dimensions			
Part No.	Type					B in / mm	H in / mm	L in / mm	L <sub>2</sub> in / mm
3558	G-M5-A/I	M 5	0.08 / 2	Al, blue	0.007 / 0.003	0.18 / 4.5	0.39 / 10	0.58 / 14.7	0.20 / 5.2
3614	G-1/8-A/I	G 1/8 ISO	0.16 / 4	anodized	0.022 / 0.010	0.26 / 6.5	0.63 / 16	0.90 / 22.8	0.33 / 8.3
3615	G-1/4-A/I	G 1/4 ISO	0.26 / 6.5	with sealing ring	0.048 / 0.022	0.33 / 8.5	0.87 / 22	1.14 / 28.9	0.41 / 10.4
3616	G-3/8-A/I	G 3/8 ISO	0.35 / 9		0.081 / 0.037	0.41 / 10.5	1.06 / 27	1.30 / 32.9	0.45 / 11.4
2092	G-1/2-A/I	G 1/2 ISO	0.55 / 14	Brass	0.178 / 0.081	0.39 / 10	1.54 / 39	1.54 / 39	—
2093	G-3/4-A/I	G 3/4 ISO	0.75 / 19		0.312 / 0.142	0.39 / 10	1.85 / 47	1.85 / 47	—

### Branch Tee Type FR-...



FR-1/2-I/I  
FR-3/4-I/I



Order Number		Thread D	Orifice Size in / mm	Material	Weight lb / kg	Dimensions			
Part No.	Type					B in / mm	H in / mm	L in / mm	L <sub>2</sub> in / mm
3559	FR-M5-A/I	M 5	0.08 / 2	Al, blue	0.007 / 0.003	0.18 / 4.5	0.39 / 10	0.58 / 14.7	0.20 / 5.2
3583	FR-1/8-A/I	G 1/8 ISO	0.16 / 4	anodized	0.022 / 0.010	0.26 / 6.5	0.63 / 16	0.90 / 22.8	0.33 / 8.3
3586	FR-1/4-A/I	G 1/4 ISO	0.26 / 6.5	with sealing ring	0.044 / 0.020	0.33 / 8.5	0.87 / 22	1.14 / 28.9	0.41 / 10.4
3587	FR-3/8-A/I	G 3/8 ISO	0.35 / 9		0.073 / 0.033	0.41 / 10.5	1.06 / 27	1.30 / 32.9	0.45 / 11.4
2075	FR-1/2-I/I	G 1/2 ISO	0.55 / 14	Brass	0.264 / 0.120	0.39 / 10	1.93 / 49	1.54 / 39	—
2076	FR-3/4-A/I	G 3/4 ISO	0.75 / 19		0.396 / 0.180	0.39 / 10	2.32 / 59	1.85 / 47	—

# Festo - Your Partner in Automation



**1 Festo Inc.**  
5300 Explorer Drive  
Mississauga, ON L4W 5G4  
Canada

**Festo Customer Interaction Center**  
Tel: 1 877 463 3786  
Fax: 1 877 393 3786  
Email: customer.service.ca@festo.com



**2 Festo Pneumatic**  
Av. Ceylán 3,  
Col. Tequesquináhuac  
54020 Tlalnepantla,  
Estado de México

**Multinational Contact Center**  
01 800 337 8669  
ventas.mexico@festo.com



**3 Festo Corporation**  
1377 Motor Parkway  
Suite 310  
Islandia, NY 11749

**Festo Customer Interaction Center**  
1 800 993 3786  
1 800 963 3786  
customer.service.us@festo.com



**4 Regional Service Center**  
7777 Columbia Road  
Mason, OH 45040

Connect with us



[www.festo.com/socialmedia](http://www.festo.com/socialmedia)



[www.festo.com](http://www.festo.com)

Subject to change