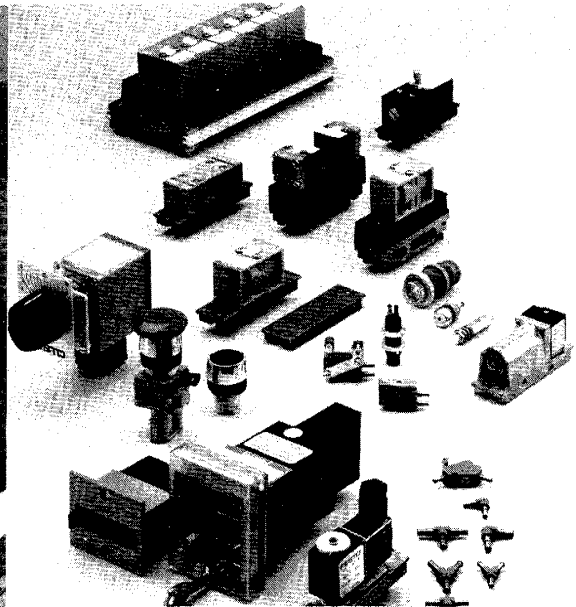
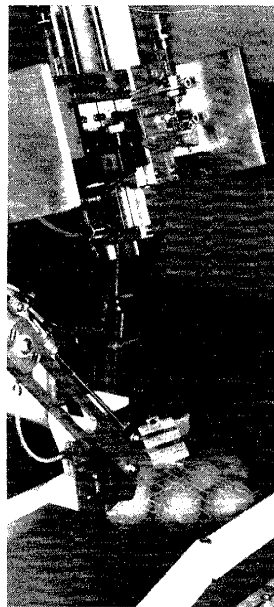


- A complete, modular system for signal input, processing and power output.
- Built-in design flexibility easily packaged for hybrid, electro-pneumatic or all-pneumatic operation.
- Compact, miniature size even fits on robotic arms.
- Operates in normal pressure range (up to 120 psi).
- Field-proven, reliable, long life performance.
- Fast response, low air consumption.
- Low maintenance components are easily installed.
- Forms neat, orderly control panel arrays.
- All components available locally from stock.
- Cost-effective.



Flexible Control System Design with Compact "M5" Components

The modular "M5" system of compact controls provides the design flexibility to meet the varied requirements of distributed and/or centralized automation control applications.

The "M5" system is based on miniature-size M5-thread connections (approximately 10/32 UNF) and barbed fittings for 3 mm and 4 mm tubing. Most components are sub-base mounted on standard "2N" (3-1/2" / 88 mm) sub-bases which simplify installation and maintenance.

The "M5" system includes one of the largest selections of signal input, signal processors, directional control and power elements, plus accessories available from any single source supplier. And Festo has the expertise to put it all together for you in a neat, pre-packaged control panel.

Control Elements

Signal Input

- Pushbuttons, manually operated hand/foot valves
- Limit switches and end-stops
- Non-contact sensors
- Flow controls
- Counters, indicators

Signal Processors

- Sequencing controls: – FSS-12 "Quickstepper"
– "Stepper" modular sequencing
- Adjustable pressure sequence valves
- Pneumatic-electric interfaces, vacuum or pressure
- AND-gates, OR-gates, flow controls
- Time-delay valves
- Special function valves

Directional Control/Power Valves

- Air piloted valves
- Solenoid valves
- Low-wattage solenoid valves
- Sub-bases and manifolds

Accessories/Structural Elements

- Fittings, couplings, connectors
- Tubing
- Silencers
- FRL's
- Control cabinet structural frames

Compact 2000 / M5/2N System Valves

Low Watt, 3/2 Single Solenoid Valves

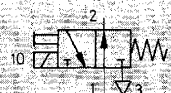
Single Solenoid Valve

With Sub-base and Manual Override
Without Socket

Type MEH-...



Type MOEH-...



Accessories:
(Ordered Separately)

Standard Sockets, Type MSSD-E
see page 649

Sockets with cable, Type KME-...
see page 650

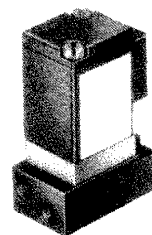
LED Gaskets, Type ME-LC-...
see page 651

For 2N mounting frame, see page C35.

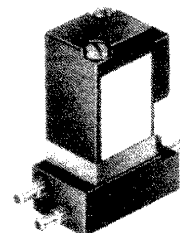
This valve has low, 1.5W power consumption allowing direct triggering by electronic controls or PLCs.

The valve exhaust is connected to exhaust port 3 (R) through an integral duct. With the MEH valve, the valve exhaust can be directly vented to the atmosphere, if a seal under the cap is removed.

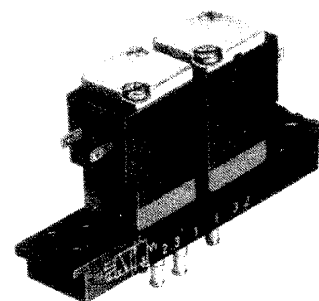
Type MEH-3-M5
MOEH-3-M5



Type MEH-3-PK-3
MOEH-3-PK-3



Type MEH-3-PK-3 x 2
MOEH-3-PK-3 x 2
(Two valves on a sub-base)



- 1 (P) = Supply port
- 2 (A) = Operating or outlet port
- 3 (R) = Exhaust port

Order Number Part No./Type	15341 MEH-3-M5	15339 MEH-3-PK-3	15340 MEH-3-PK-3 x 2
	15710 MOEH-3-M5	14011 MOEH-3-PK-3	15711 MOEH-3-PK-3 x 2
Medium	Compressed air (filtered, lubricated or unlubricated) or vacuum*		
Design	Poppet valve, directly actuated with spring return		
Mounting	Through-holes in housing		
Connection	M5	Barbed fitting for 3 mm tubing	
Nominal Size	0.04 in / 0.9 mm		
C _V Factor (1 → 2)	0.022 C _V / 22 l/min		
Operating Pressure Range	26.6 in Hg to 120 psi / -0.9 to 8 bar		
Response Time at 90 psi / 6 bar	On: 10 ms, Off: 16 ms		
Voltage	24V DC		
Power Consumption	1.5 W		
Duty Cycle	100%		
Type of Protection	IP 65 (DIN 40050)		
Ambient Temperature	23 to 122° F / -5 to +50° C		
Medium Temperature	23 to 122° F / -5 to +50° C		
Materials	Housing: Steel, copper, brass, plastic; Seals: Buna N		
Weight	0.088 lb / 0.040 kg		0.176 lb / 0.080 kg

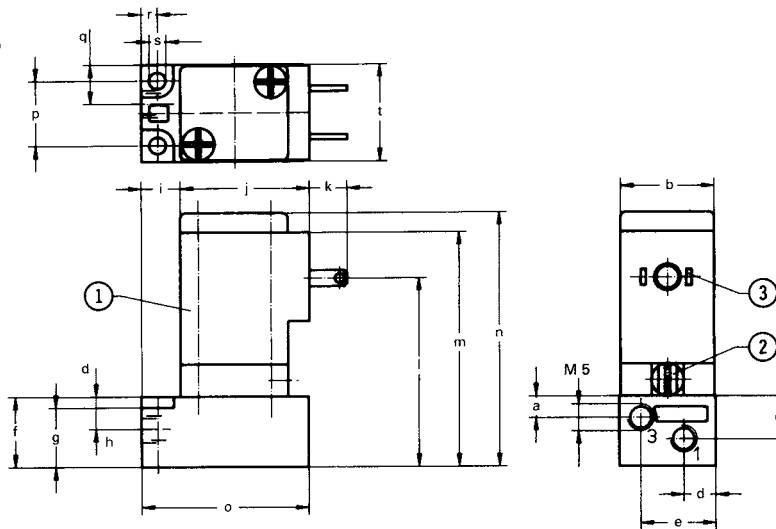
*Vacuum connection at 1 (P)

Compact 2000 / M5/2N System Valves

Low Watt, 3/2 Single Solenoid Valves, Dimensions

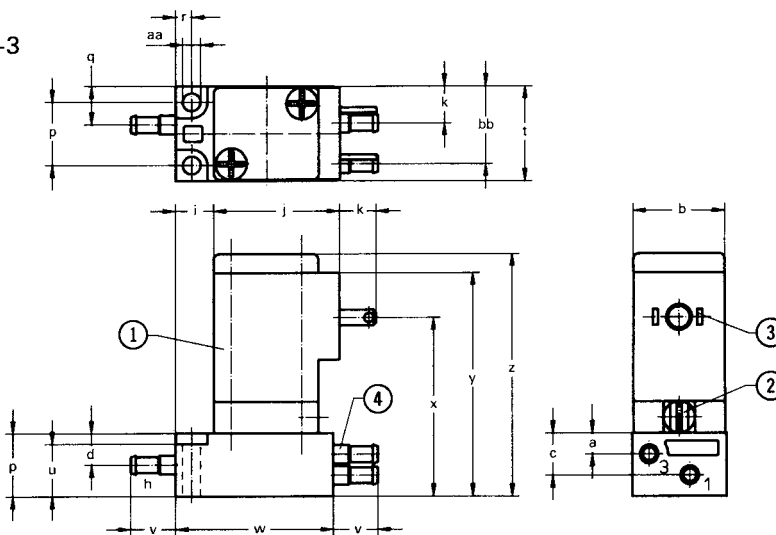
FESTO

Type MEH-3-M5
MOEH-3-M5



- ① Solenoid coil can be rotated 180°
- ② Base plate with manual override can be rotated 180°
- ③ For socket conforming to DIN 46247 or solenoid plug socket Type MSSD-E
- ④ Barbed fitting for 3 mm tubing

Type MEH-3-PK-3
MOEH-3-PK-3

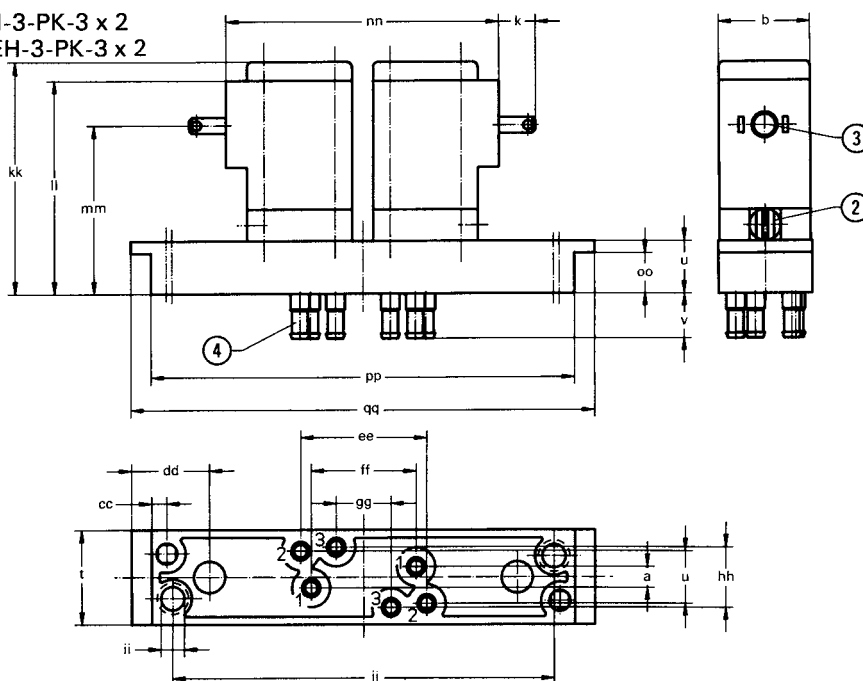


- 1 (P) = Supply
- 2 (A) = Working or Outlet
- 3 (R) = Exhaust

Dimensions

a	0.16 in / 4 mm
b	0.69 in / 17.5 mm
c	0.31 in / 8 mm
d	0.24 in / 6 mm
e	0.55 in / 14 mm
f	0.51 in / 13 mm
g	0.43 in / 11 mm
h	0.08 in / 2 mm
i	0.28 in / 7.2 mm
j	0.94 in / 24 mm
k	0.27 in / 7 mm
l	1.38 in / 35 mm
m	1.71 in / 43.5 mm
n	1.85 in / 47.1 mm
o	1.22 in / 31 mm
p	0.47 in / 12 mm
q	0.29 in / 7.3 mm
r	0.12 in / 3 mm
s	0.12 in / 3.1 mm
t	0.71 in / 18 mm
u	0.39 in / 10 mm
v	0.33 in / 8.5 mm
w	1.18 in / 30 mm
x	1.34 in / 34 mm
y	1.67 in / 42.5 mm
z	1.81 in / 46.1 mm
aa	0.13 in / 3.4 mm
bb	0.58 in / 14.75 mm
cc	0.11 in / 2.9 mm
dd	0.59 in / 14.9 mm
ee	0.95 in / 24.1 mm
ff	0.79 in / 20.1 mm
gg	0.41 in / 10.5 mm
hh	0.45 in / 11.5 mm
ii	0.18 in / 4.5 mm
jj	2.87 in / 72.8 mm
kk	1.74 in / 44.1 mm
ll	1.60 in / 40.5 mm
mm	1.26 in / 32 mm
nn	2.05 in / 52 mm
oo	0.30 in / 7.7 mm
pp	3.18 in / 80.8 mm
qq	3.48 in / 88.5 mm

Type MEH-3-PK-3 x 2
MOEH-3-PK-3 x 2



Compact 2000 / M5/2N System Valves

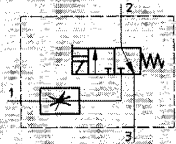
Low Watt, 3/2 Single Solenoid Valves with Integral Flow Control or Quick Exhaust

Single Solenoid Valve

Without socket, with sub-base and manual override

With integral flow control

Type MEH-3-GRO-...



With integral quick exhaust

Type MEH-3-SEU-...



Accessories:

(Ordered Separately)

Standard Sockets, Type MSSD-E

see page 649

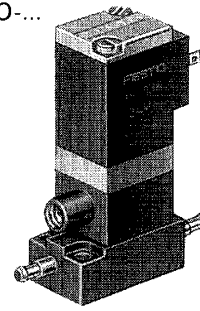
Sockets with cable, Type KME-...

see page 650

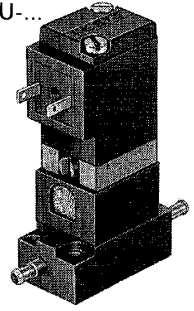
LED Gaskets, Type ME-LD-...

see page 651

MEH-3-GRO-...



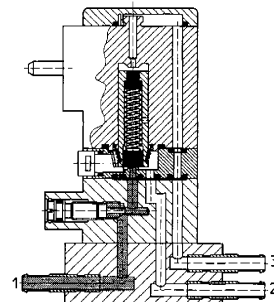
MEH-3-SEU-...



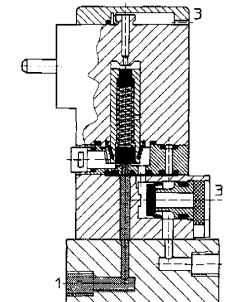
These compact valves have built-in flow control or quick exhaust. They feature low, 1.5W power consumption, allowing direct triggering by electronic controls or PLCs.

The valve exhaust is connected to exhaust port 3 (R) through an integral duct. With the MEH valve, the valve exhaust can be directly vented to the atmosphere, if a seal under the cap is removed.

MEH-3-GRO-...



MEH-3-SEU-...



- 1 (P) = Supply
- 2 (A) = Working or outlet
- 3 (R) = Exhaust

Order Number	With Flow Control	15176 MEH-3-GRO-PK-3	15177 MEH-3-GRO-M5
Part No./Type	With Quick Exhaust	15178 MEH-3-SEU-PK-3	15179 MEH-3-SEU-M5
Medium		Compressed air (Filtered, lubricated or unlubricated) or vacuum*	
Design		Poppet valve, directly actuated with return spring	
Mounting		Through-holes in housing	
Connection		Barbed fitting for 3 mm tubing	M5
Nominal Size		0.04 in / 0.9 mm	
C _v Factor (1 → 2) / (2 → 3)		GRO: 0.015 C _v / 15 l/min / 0.017 C _v / 17 l/min; SEU: 0.017 C _v / 17 l/min / 0.065 C _v / 65 l/min	
Operating Pressure Range		GRO: 0 to 120 psi / 0 to 8 bar; SEU: 7.5 to 120 psi / 0.5 to 8 bar	
Response Time On/Off	GRO	18/24 ms	
at 90 psi / 6 bar	SEU	17/9 ms	
Ambient Temperature		23 to 122°F / -5 to +50°C	
Medium Temperature		23 to 122°F / -5 to +50°C	
Materials		Housing: Steel, copper, brass, plastic; Seals: Buna N	
Weight		0.154 lb / 0.070 kg	
Voltage		24V DC	
Power Consumption		1.5 W	
Duty Cycle		100%	
Type of Protection		IP 65 (DIN 40050)	

* Vacuum connection at 1 (P)

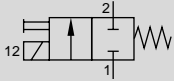
Compact 2000 / M5/2N System Valves

2/2 Single Solenoid Valves

Single Solenoid Valve

Type MFH-2-M5

Spring Return and Manual Override



Accessories:

(Ordered Separately)

Solenoid F-coils

with socket, see page 647

without socket, see page 648

Standard Sockets, Type MSSD-F

see page 649

Sockets with cable, Type KMF-...

see page 650

LED Gaskets, Type MF-LD-...

see page 651

Indicator Inserts, Type MFL-...-...

see page 652

Solenoid Inserts, Type MFZ-...

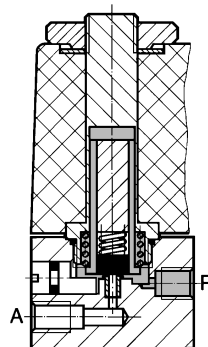
see page 653

Certification: UR, CSA

Permissible torque on solenoid mounting
nuts = 13 lb in / 150 Ncm

When the solenoid is energized, the valve shifts and remains shifted until the solenoid is deenergized.

Valve shown with solenoid and socket accessories.

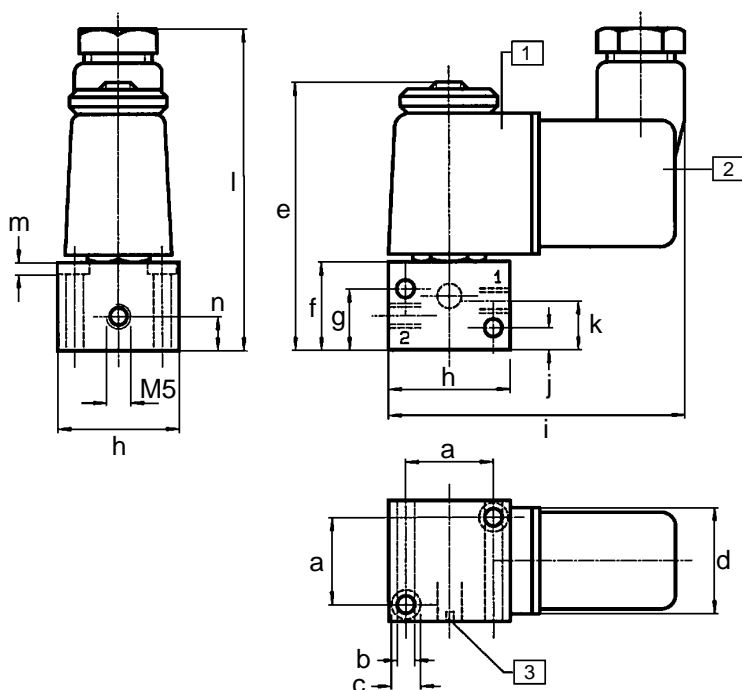


1 (P) = Supply
2 (A) = Working or
Outlet Port

Order Number		4573 MFH-2-M5	
Medium		Compressed air (filtered, lubricated or unlubricated)	
Mounting		Holes through housing	
Connection		M5	
Orifice Size		0.06 in / 1.5 mm	
C _v Factor (P → A)		0.058 C _v / 58 l/min	
Pressure Range		0 to 120 psi / 0 to 8 bar	
Response Time at 90 psi / 6 bar		On: 10 ms Off: 10 ms	
Medium Temperature		14 to 140°F / -10 to +60°C	
Ambient Temperature		23 to 104°F / -5 to +40°C	
Design		Seat valve, directly actuated, with spring return	
Materials		Housing: Al, blue anodized. Seals: Buna N	
Weight		0.243 lb / 0.110 kg	
Direct Current	Standard Voltage	12, 24 V	
	Available Voltage	12 to 220 V	
	Standard Voltage	24, 42, 110, 220 V / 50 Hz or 50 and 60 Hz	
	Available Voltage	12 to 240 V / 50 or 60 Hz	
Power Consumption		DC: 4.5 W; AC: Holding 6 VA, Inrush 7.5 VA	
ED Switching Time		100% continuous duty	
Type of Protection		IP 65 (DIN 40050)	

For solenoids,
see pages 647-648.

Type MFH-2-M5



- ① Solenoid coil can be rotated
- ② Socket can be turned 180°
- ③ Manual override

Dimensions

a	0.71 in / 18 mm	f	0.71 in / 18 mm	k	0.39 in / 10 mm
b	0.14 in / 3.6 mm	p	0.49 in / 12.5 mm	l	2.64 in / 67 mm
c	0.24 in / 6 mm	q	0.99 in / 25 mm	m	0.09 in / 2.4 mm
d	0.87 in / 22 mm	r	2.40 in / 61 mm	n	0.28 in / 7 mm
e	2.05 in / 52 mm	s	0.18 in / 4.5 mm		

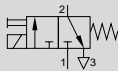
Compact 2000 / M5/2N System Valves

3/2 Single Solenoid Valves

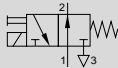
Single Solenoid Valve

Spring Return and
Manual Override

Type MFH-3-M5



Type MOFH-3-M5



When the solenoid is energized, the valve shifts and remains shifted until the solenoid is deenergized.

Accessories:

(Ordered Separately)

Solenoid F-coils

with socket, see page 647

without socket, see page 648

Standard Sockets, Type MSSD-F

see page 649

Sockets with cable, Type KMF-...

see page 650

LED Gaskets, Type MF-LD-...

see page 651

Indicator Inserts, Type MFL-...-...

see page 652

Solenoid Inserts, Type MFZ-...

see page 653

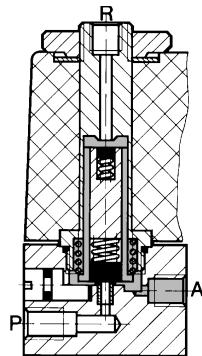
Certification for MFH-3-M5: UR

Permissible torque on solenoid mounting
nuts = 13 lb in / 150 Ncm

Valve shown with solenoid
and socket accessories.



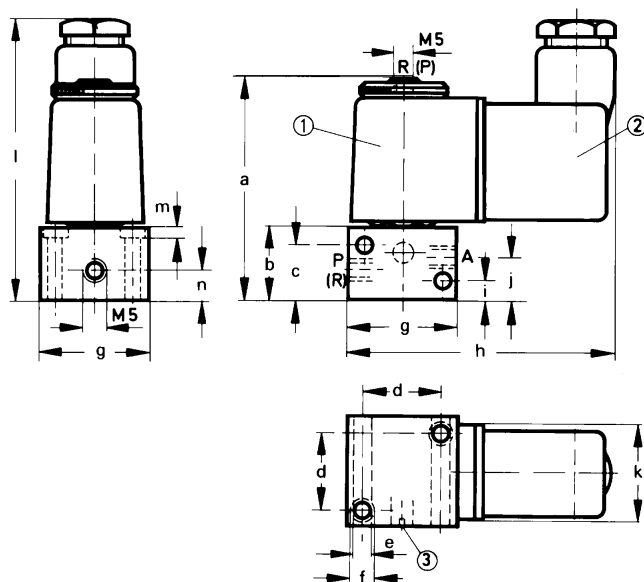
Example: Type MFH-3-M



1 (P) = Supply
2 (A) = Working or Outlet Port
3 (R) = Exhaust

Order Number		4450 MFH-3-M5	4543 MOFH-3-M5
Medium		Compressed air (filtered, lubricated or unlubricated)	
Mounting		Holes through housing	
Connection		M5	
Orifice Size		0.05 in / 1.3 mm	
C _v Factor (P → A)		0.05 C _v / 50 l/min	
Pressure Range		0 to 120 psi / 0 to 8 bar	0 to 97.5 psi / 0 to 6.5 bar
Response Time at 90 psi / 6 bar		On: 10 ms Off: 16 ms	On: 12 ms Off: 8.5 ms
Ambient Temperature		23 to 104°F / -5 to +40°C	
Medium Temperature		14 to 140°F / -10 to +60°C	
Design		Seat valve, directly actuated, with spring return	
Materials		Housing: Al, blue anodized. Seals: Buna N	
Weight		0.209 lb / 0.095 kg	
Direct Current	Standard Voltage	12, 24 V	
	Available Voltage		
Alternating Current	Standard Voltage	24, 42, 110, 220 V / 50 Hz or 50 and 60 Hz	
	Available Voltage		
Power Consumption		4.5 W	
		Inrush 7.5 VA, Holding 6 VA	
ED Switching Time		100%	
Type of Protection		IP 65 (DIN 40050)	

Type MFH-3-M5
MOFH-3-M5 (connections in parentheses)



- ① Solenoid coil can be rotated
- ② Socket can be turned 180°
- ③ Manual override

Dimensions

a	2.05 in / 52 mm
b	0.71 in / 18 mm
c	0.49 in / 12.5 mm
d	0.71 in / 18 mm
e	0.14 in / 3.6 mm
f	0.24 in / 6 mm
g	0.99 in / 25 mm
h	2.40 in / 61 mm
i	0.18 in / 4.5 mm
j	0.39 in / 10 mm
k	0.87 in / 22 mm
l	2.64 in / 67 mm
m	0.09 in / 2.4 mm
n	0.28 in / 7 mm

Compact 2000 / M5/2N System Valves

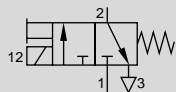
3/2 Single Solenoid Valve with Flow Control

FESTO

Single Solenoid Valve

With spring return, manual override integrated quick exhaust and silencer.

Type MFH-3-1/8-SEU



When voltage is applied, the solenoid is energized and the valve is shifted.

The integrated quick exhaust makes it possible to achieve a rapid advance or return, e.g. for control of cylinders.

Accessories:

(Order Separately)

Solenoid F-coils

with socket, see page 647

without socket, see page 648

Standard Sockets, Type MSSD-F

see page 649

Sockets with cable, Type KMF-...

see page 650

LED Gaskets, Type MF-LD-...

see page 651

Indicator Inserts, Type MFL-...

see page 652

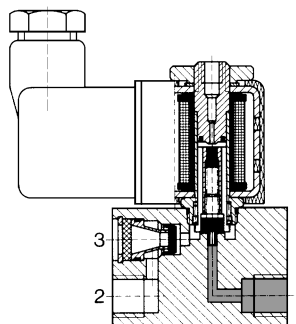
Solenoid Inserts, Type MFZ-...

see page 653

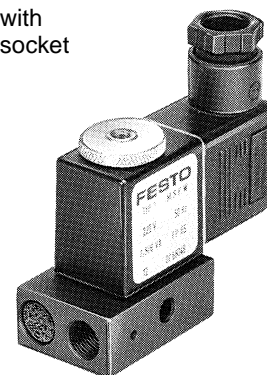
1 (P) = Supply Port

2 (A) = Working or Outlet Port

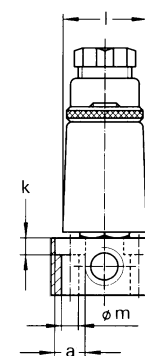
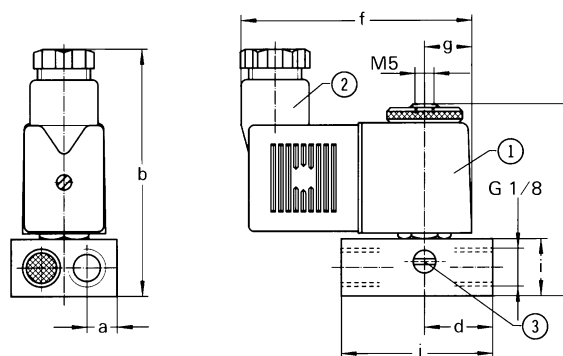
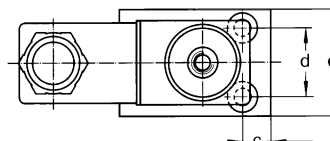
3 (R) = Exhaust Port



Valve shown with solenoid and socket accessories.



- ① Coil can be rotated
- ② Socket can be turned 180°
- ③ Manual override



Dimensions

a	0.31 in / 8 mm	e	1.10 in / 28 mm	h	1.99 in / 50.5 mm	k	0.17 in / 4.4 mm
b	2.56 in / 65 mm	f	2.40 in / 61 mm	i	0.59 in / 15 mm	l	0.87 in / 22 mm
c	0.30 in / 7.5 mm	g	0.49 in / 12.5 mm	j	1.57 in / 40 mm	m	0.18 in / 4.5 mm
d	0.71 in / 18 mm						

Permissible torque on solenoid mounting nuts = 13 lb in / 150 Ncm

Order Number	Part No./Type	11121 MFH-3-1/8-SEU
Medium		Compressed air (filtered, lubricated or unlubricated)
Design		Poppet valve, directly actuated at one end, with spring return
Mounting		Through-holes in housing
Connection		G 1/8 ISO
Orifice Size		0.05 in / 1.3 mm (1 → 2), 0.11 in / 2.8 mm (2 → 3)
C _v Factor		0.04 C _v / 40 l/min (1 → 2), 0.130 C _v / 130 l/min (2 → 3)
Pressure Range		7.5 to 120 psi / 0.5 to 8 bar
Response Time at 90 psi / 6 bar		On: 12 ms, Off: 16 ms
Ambient Temperature		23 to 104°F / -5 to +40°C
Medium Temperature		14 to 140°F / -10 to +60°C
Materials		Housing: Blue-anodized aluminum; Seals: Buna N
Weight		0.285 lb / 0.130 kg
Direct Current	Standard Voltage	12, 24 V
	Available Voltage	12 to 220 V
Alternating Current	Standard Voltage	24, 42, 110, 220 V / 50 Hz or 50 and 60 Hz
	Available Voltage	12 to 240 V / 50 or 60 Hz
Power Consumption		DC: 4.5 WA; AC: Holding 6 VA, Inrush 7.5 VA
Duty Cycle		100%
Degree of Protection		IP 65 (DIN 40050)

Product Range and Company Overview

A Complete Suite of Automation Services

Our experienced engineers provide complete support at every stage of your development process, including: conceptualization, analysis, engineering, design, assembly, documentation, validation, and production.



Custom Automation Components

Complete custom engineered solutions



Custom Control Cabinets

Comprehensive engineering support and on-site services



Complete Systems

Shipment, stocking and storage services

The Broadest Range of Automation Components

With a comprehensive line of more than 30,000 automation components, Festo is capable of solving the most complex automation requirements.



Electromechanical

Electromechanical actuators, motors, controllers & drives



Pneumatics

Pneumatic linear and rotary actuators, valves, and air supply



PLCs and I/O Devices

PLC's, operator interfaces, sensors and I/O devices

Supporting Advanced Automation... As No One Else Can!

Festo is a leading global manufacturer of pneumatic and electromechanical systems, components and controls for industrial automation, with more than 12,000 employees in 56 national headquarters serving more than 180 countries. For more than 80 years, Festo has continuously elevated the state of manufacturing with innovations and optimized motion control solutions that deliver higher performing, more profitable automated manufacturing and processing equipment. Our dedication to the advancement of automation extends beyond technology to the education and development of current and future automation and robotics designers with simulation tools, teaching programs, and on-site services.

Quality Assurance, ISO 9001 and ISO 14001 Certifications

Festo Corporation is committed to supply all Festo products and services that will meet or exceed our customers' requirements in product quality, delivery, customer service and satisfaction.

To meet this commitment, we strive to ensure a consistent, integrated, and systematic approach to management that will meet or exceed the requirements of the ISO 9001 standard for Quality Management and the ISO 14001 standard for Environmental Management.



© Copyright 2008, Festo Corporation. While every effort is made to ensure that all dimensions and specifications are correct, Festo cannot guarantee that publications are completely free of any error, in particular typing or printing errors. Accordingly, Festo cannot be held responsible for the same. For Liability and Warranty conditions, refer to our "Terms and Conditions of Sale", available from your local Festo office. All rights reserved. No part of this publication may be reproduced, distributed, or transmitted in any form or by any means, electronic, mechanical, photocopying or otherwise, without the prior written permission of Festo. All technical data subject to change according to technical update.



Printed on recycled paper at New Horizon Graphic, Inc., FSC certified as an environmentally friendly printing plant.

Festo North America

United States

Customer Resource Center

502 Earth City Expy., Suite 125
Earth City, MO 63045

For ordering assistance, or to find
your nearest Festo Distributor,

Call: 1.800.99.FESTO

Fax: 1.800.96.FESTO

Email: customer.service@us.festo.com

For technical support,

Call: 1.866.GO.FESTO

Fax: 1.800.96.FESTO

Email: product.support@us.festo.com

Headquarters

Festo Corporation
395 Moreland Road
P.O. Box 18023
Hauppauge, NY 11788
www.festo.com/us

Sales Offices

Appleton

N. 922 Tower View Drive, Suite N
Greenville, WI 54942

Boston

120 Presidential Way, Suite 330
Woburn, MA 01801

Chicago

1441 East Business Center Drive
Mt. Prospect, IL 60056

Dallas

1825 Lakeway Drive, Suite 600
Lewisville, TX 75057

Detroit - Automotive Engineering Center

2601 Cambridge Court, Suite 320
Auburn Hills, MI 48326

New York

395 Moreland Road
Hauppauge, NY 11788

Silicon Valley

4935 Southfront Road, Suite F
Livermore, CA 94550

Design and Manufacturing Operations



East: 395 Moreland Road, Hauppauge, NY 11788



Central: 1441 East Business Center Drive, Mt. Prospect, IL 60056



West: 4935 Southfront Road, Suite F, Livermore, CA 94550

Mexico

Headquarters

Festo Pneumatic, S.A.
Av. Ceylán 3, Col. Tequesquahuac
54020 Tlalnepantla, Edo. de México
Call: 011 52 [55] 53 21 66 00
Fax: 011 52 [55] 53 21 66 65
Email: festo.mexico@mx.festo.com
www.festo.com/mx



Canada

Headquarters

Festo Inc.
5300 Explorer Drive
Mississauga, Ontario L4W 5G4
Call: 1.905.624.9000
Fax: 1.905.624.9001
Email: info.ca@ca.festo.com
www.festo.com/ca



Festo Worldwide

Argentina Australia Austria Belarus Belgium Brazil Bulgaria Canada Chile China Colombia Croatia Czech Republic Denmark
Estonia Finland France Germany Great Britain Greece Hong Kong Hungary India Indonesia Iran Ireland Israel Italy Japan
Latvia Lithuania Malaysia Mexico Netherlands New Zealand Norway Peru Philippines Poland Romania Russia Serbia Singapore
Slovakia Slovenia South Africa South Korea Spain Sweden Switzerland Taiwan Thailand Turkey Ukraine United States Venezuela

www.festo.com