

# Compact Clip-On 2000 System Valves

## DIN Mounting Rails/Labels

### DIN Rail

Type NRC-32-2000

As per DIN EN 50035

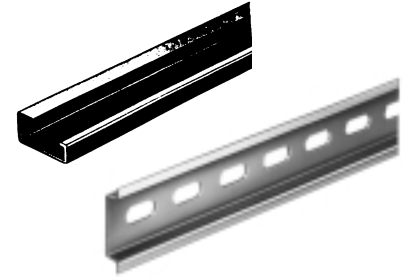
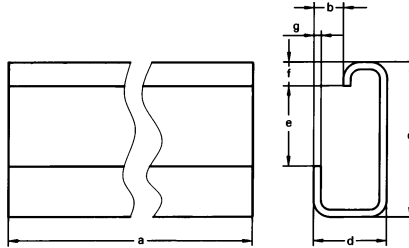
Type NRC-32-2000

As per DIN EN 50035

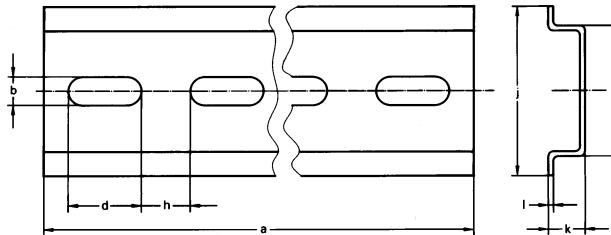
### Dimensions

a	78.74 in / 2000 mm	g	0.06 in / 1.5 mm
b	0.24 in / 6 mm	h	0.39 in / 10 mm
c	1.26 in / 32 mm	i	1.06 in / 27 mm
d	0.59 in / 15 mm	j	0.38 in / 35 mm
e	0.65 in / 16.5 mm	k	0.03 in / 7.5 mm
f	0.20 in / 5 mm	l	0.04 in / 1 mm

Type NRC-32-2000



Type NRH-35-2000



Order Number	Part No./Type	6756 NRC-32-2000	35430 NRH-35-2000
Length		78.74 in / 2 m	
Materials		Steel	
Weight		3.086 lb / 1.400 kg	1.367 lb / 0.620 kg

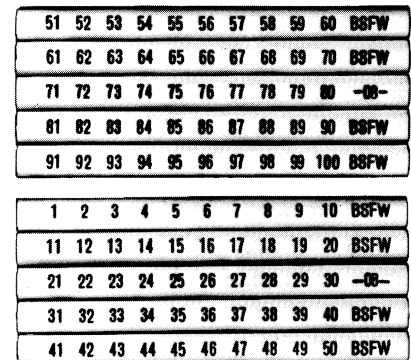
### Label

Type BZ-NUM-1 to 50  
BZ-NUM-51 to 100

One card contains numbers 1 to 50 or 51 to 100.

These labels are made of white plastic and are used to identify valves, mounting racks, distributor segments, and manifolds.

Detach the label from the card and slide into the appropriate groove on the component.



These numbers are suitable for all types of identification, e.g., labeling elements within pneumatic control systems. The black digits are printed on yellow plastic backing. The printed surface is laminated to protect it from pollution and abrasion. Labels are self-adhesive

Order Number	Type
Part No.	
6888	BZ-NUM-1-50
6889	BZ-NUM-51-100
Temperature Range	14 to 140°F / -10 to +60°C
Weight	0.015 lb / 0.007 kg