

Silencers

FESTO




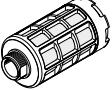

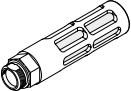


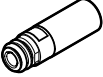
★ Festo Kernprogramm
Löst 80% Ihrer Automatisierungsaufgaben


Weltweit: Schnell verfügbar, auch langfristig
Gewohnt gut: Immer in Festo Qualität
Schnell zum Ziel: Einfache Auswahl

Das Festo Kernprogramm ist eine Vorauswahl der wichtigsten Funktionen und Produkte – Teil unseres gesamten Produktportfolios. Im Kernprogramm finden Sie das beste Preis-Leistungs-Verhältnis für Ihre Automatisierung.




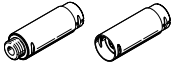
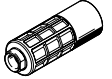
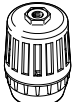
Schauen Sie
nach dem
Stern!

Product range overview

Design	Type	Connection D1			Push-in connector	For tubing I.D.	Push-in sleeve ∅	Noise level [dB (A)]	→ Page/ Internet	
		M thread	G thread	NPT thread						
Sintered metal										
	U	-	-	-	-	3	-	< 70	4	
						4		< 77		
Polymer, male thread										
	U	-	G1/8	-	-	-	-	< 74	5	
			G1/4					< 76		
			G3/8					< 82		
			G1/2					< 82		
			G3/4					< 85		
			G1					< 90		
Polymer, female thread										
	U-...-I	-	G1/8	-	-	-	-	< 76.5	6	
Die-cast metal										
	U-...-B	-	G1/8	-	-	-	-	< 74	7	
			G1/4					< 80		
			G3/8					< 80		
			G1/2					< 81		
			G3/4					< 83		
			G1					< 85		
		-	-	1/8 NPT	-	-	-	< 74	8	
				1/4 NPT				< 78		
				3/8 NPT				< 80		
				1/2 NPT				< 80		
				3/4 NPT				< 81		
				1 NPT				< 80		
With push-in sleeve for push-in fitting QS, Quick Star										
	UC-QS	-	-	-	-	-	3	< 60	9	
							4	< 60		
							6	< 60		
							8	< 60		
							10	< 68		
Threaded connection, for solenoid valves CPE, Compact Performance										
	UC	M5	-	-	-	-	-	< 60	10	
		M7						< 58		
		-						G1/8		< 59
		-						G1/4		< 60
		-						G3/8		< 60
Push-in connector, for solenoid valves VUVB-ST12/valve terminal type 23 VTUB-12										
	AMTC	-	-	-	Cartridge 10 mm	-	-	< 58	11	

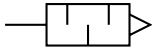
 **Note**
Clean silencers with kerosene (not with petrol or trichloroethylene).

Product range overview

Design	Type	Connection D1			Push-in connector	For tubing I.D.	Push-in sleeve ∅	Noise level [dB (A)]	→ Page/ Internet		
		M thread	G thread	NPT thread							
Metal											
	AMTE-M-H	M5	–	–	–	–	–	< 71	12		
		–	G1/8	–	–	–	–	< 92			
		–	G1/4	–	–	–	–	< 95			
		–	G3/8	–	–	–	–	< 92			
		–	G1/2	–	–	–	–	< 92			
	AMTE-M-LH	M3	–	–	–	–	–	< 55	13		
		M5	–	–	–	–	–	< 72			
		–	G1/8	–	–	–	–	< 76			
		–	G1/4	–	–	–	–	< 83			
		–	G3/8	–	–	–	–	< 82			
		–	G1/2	–	–	–	–	< 88			
		–	G3/4	–	–	–	–	< 85			
		–	G1	–	–	–	–	< 88			
		–	–	–	10-32 UNF-2A	–	–	–		< 71	15
		–	–	–	1/8 NPT	–	–	–		< 77	
		–	–	–	1/4 NPT	–	–	–		< 82	
		–	–	–	3/8 NPT	–	–	–		< 83	
		–	–	–	1/2 NPT	–	–	–		< 85	
For vacuum generators VN-T2/T3											
	UO	M5	–	–	–	–	–	–	16		
		M7	–	–	–	–	–	–			
		–	G1/8	–	–	–	–	–			
		–	G1/4	–	–	–	–	–			
For vacuum generators VN-T4/T6											
	UOM	–	G1/4	–	–	–	–	–	17		
	UOMS	–	G3/8	–	–	–	–	–			
For soft-start/quick exhaust valve MS6-SV											
	UOS	–	G1	–	–	–	–	< 75	ms6-sv		
Filter silencer											
	LFU	–	G1/4	–	–	–	–	< 40	lfu		
		–	G3/8	–	–	–	–	–			
		–	G1/2	–	–	–	–	–			
		–	G1	–	–	–	–	–			

Datasheet – Sintered metal design

Function



- To reduce noise and prevent contamination at the exhaust ports of pneumatic components
- Compact design



General technical data		PK-3	PK-4
Pneumatic connection		PK-3	PK-4
Mounting position		Any	
Noise level ¹⁾	[dB (A)]	< 70	< 77
Flow rate with respect to atmosphere ²⁾	[l/min]	310	580
Product weight	[g]	4.5	4.1

- 1) Measured at 0.6 MPa with respect to atmosphere at a distance of 1 m
 2) Measured at p₁ = 0.6 MPa

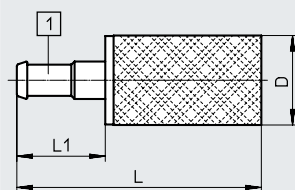
Operating and environmental conditions		
Operating pressure	[MPa]	0 ... 1
	[bar]	0 ... 10
	[psi]	0 ... 145
Operating medium		Compressed air to ISO 8573-1:2010 [7:-:-]
Note on the operating/pilot medium		Lubricated operation possible
Ambient temperature	[°C]	-10 ... +70

Materials	
Screwed plug	Brass
Cushioning insert	Bronze
Note on materials	RoHS-compliant
LABS (PWIS) conformity	VDMA24364-B1/B2-L

Dimensions

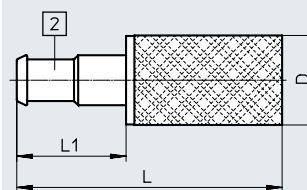
Download CAD data → www.festo.com

U-PK-3



[1] Barbed connector for tubing I.D. 3

U-PK-4



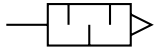
[2] Barbed connector for tubing I.D. 4

Ordering data		D	L	L1	Part no.	Type	PJ ¹⁾
Pneumatic connection		∅					
PK-3		8.6	23.5	8.5	4646	U-PK-3	10
PK-4		8.6	25.5	10.5	4932	U-PK-4	10

- 1) Packaging unit

Datasheet – Polymer design, male thread

Function



- To reduce noise at the exhaust ports of pneumatic components



General technical data		G1/8	G1/4	G3/8	G1/2	G3/4	G1
Pneumatic connection		G1/8	G1/4	G3/8	G1/2	G3/4	G1
Mounting position		Any					
Noise level ¹⁾	[dB (A)]	< 74	< 76	< 82	< 82	< 85	< 90
Flow rate with respect to atmosphere ²⁾	[l/min]	2000	3300	6000	10300	17600	20800
Product weight	[g]	2.3	7.7	29.6	58.2	83	139.8

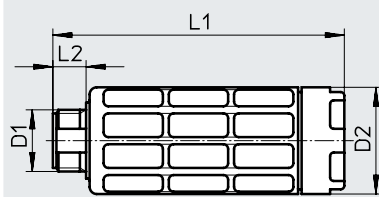
- 1) Measured at 0.6 MPa with respect to atmosphere at a distance of 1 m
 2) Measured at p1 = 0.6 MPa

Operating and environmental conditions		
Operating pressure	[MPa]	0 ... 1
	[bar]	0 ... 10
	[psi]	0 ... 145
Operating medium		Compressed air to ISO 8573-1:2010 [7:-:-]
Note on the operating/pilot medium		Lubricated operation possible
Ambient temperature	[°C]	-10 ... +70

Materials	
Housing	POM
Cushioning insert	PE
Note on materials	RoHS-compliant
LABS (PWIS) conformity	VDMA24364-B1/B2-L

Dimensions

Download CAD data → www.festo.com



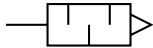
★ Core Range

Ordering data		D2	L1	L2	Part no.	Type	PU ¹⁾
Pneumatic connection	D1	∅					
G1/8		15.2	35.9	5.5	★ 2307	U-1/8	1
					534222	U-1/8-50	50
G1/4		19	57	6.5	★ 2316	U-1/4	1
					534223	U-1/4-20	20
G3/8		33.5	78.8	7.5	★ 2309	U-3/8	1
					534224	U-3/8-20	20
G1/2		43	88.1	9	★ 2310	U-1/2	1
					534225	U-1/2-20	20
G3/4		45	120.7	10.5	★ 2311	U-3/4	1
G1		55	126.5	11.5	★ 2312	U-1	1

1) Packaging unit

Datasheet – Polymer design, female thread

Function



- To reduce noise at the exhaust ports of pneumatic components



General technical data		
Pneumatic connection		G1/8
Mounting position		Any
Noise level ¹⁾	[dB (A)]	< 76.5
Flow rate with respect to atmosphere ²⁾	[l/min]	2050
Product weight	[g]	3.6

1) Measured at 0.6 MPa with respect to atmosphere at a distance of 1 m

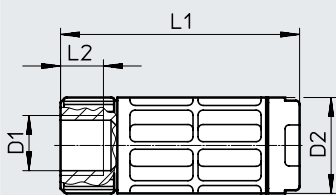
2) Measured at p₁ = 0.6 MPa

Operating and environmental conditions		
Operating pressure	[MPa]	0 ... 1
	[bar]	0 ... 10
Operating medium		Compressed air to ISO 8573-1:2010 [7:--]
Note on the operating/pilot medium		Lubricated operation possible
Ambient temperature	[°C]	-10 ... +70

Materials	
Housing	POM
Cushioning insert	PE
Note on materials	RoHS-compliant
LABS (PWIS) conformity	VDMA24364-B1/B2-L

Dimensions

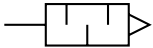
Download CAD data → www.festo.com



Ordering data					
Pneumatic connection	D2	L1	L2	Part no.	Type
D1	∅				
G1/8	15.2	38	6.5	3670	U-1/8-I

Datasheet – Die-cast design

Function



- To reduce noise at the exhaust ports of pneumatic components



General technical data		G1/8	G1/4	G3/8	G1/2	G3/4	G1
Pneumatic connection							
Mounting position		Any					
Noise level ¹⁾	[dB (A)]	< 74	< 80	< 80	< 81	< 83	< 85
Flow rate with respect to atmosphere ²⁾	[l/min]	1340	2440	5800	7500	10000	17500
Product weight	[g]	8	17	37	75	120	233

- 1) Measured at 0.6 MPa with respect to atmosphere at a distance of 1 m
 2) Measured at p1 = 0.6 MPa

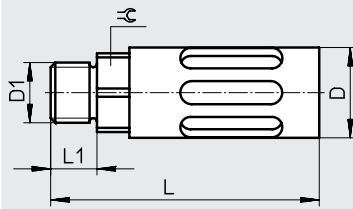
Operating and environmental conditions			
Operating pressure for full temperature range	[MPa]	0 ... 1	
	[bar]	0 ... 10	
	[psi]	0 ... 145	
Operating medium		Compressed air to ISO 8573-1:2010 [7:-:-]	
Note on the operating/pilot medium		Lubricated operation possible	
Ambient temperature	[°C]	-10 ... +70	
Corrosion resistance class CRC ¹⁾		1 - Low corrosion stress	

- 1) More information: www.festo.com/x/topic/crc

Materials		
Housing		Aluminium
Screwed plug		Aluminium
Cushioning insert		PE
Note on materials		RoHS-compliant
LABS (PWIS) conformity		VDMA24364-B1/B2-L

Dimensions

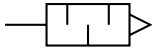
Download CAD data → www.festo.com



Ordering data		D	L	L1	±ε	Part no.	Type
Pneumatic connection	D1	∅					
G1/8		16	39.2	5.5	14	6841	U-1/8-B
G1/4		19.5	55.6	6.5	17	6842	U-1/4-B
G3/8		25	86.6	7.5	19	6843	U-3/8-B
G1/2		28	116.5	9	24	6844	U-1/2-B
G3/4		38	138	10.5	32	6845	U-3/4-B
G1		47.8	177	11.5	36	151990	U-1-B

Datasheet – Die-cast design

Function



- To reduce noise at the exhaust ports of pneumatic components



General technical data						
Pneumatic connection	1/8 NPT	1/4 NPT	3/8 NPT	1/2 NPT	3/4 NPT	1 NPT
Mounting position	Any					
Noise level ¹⁾ [dB (A)]	< 74	< 78	< 80	< 80	< 81	< 80
Flow rate with respect to atmosphere ²⁾ [l/min]	1450	3000	4500	6500	11834	15102
Product weight [g]	8	17	37	75	128	233

1) Measured at 0.6 MPa with respect to atmosphere at a distance of 1 m
 2) Measured at p1 = 0.6 MPa

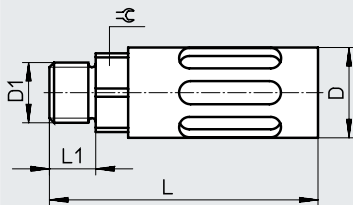
Operating and environmental conditions		
Operating pressure for full temperature range	[MPa]	0 ... 1
	[bar]	0 ... 10
	[psi]	0 ... 145
Operating medium	Compressed air to ISO 8573-1:2010 [7:-:-]	
Note on the operating/pilot medium	Lubricated operation possible	
Ambient temperature [°C]	-10 ... +70	
Corrosion resistance class CRC ¹⁾	1 - Low corrosion stress	

1) 1 - Low corrosion stress

Materials	
Housing	Aluminium
Screwed plug	Aluminium
Cushioning insert	PE
Note on materials	RoHS-compliant
LABS (PWIS) conformity	VDMA24364-B1/B2-L

Dimensions

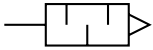
Download CAD data → www.festo.com



Ordering data						
Pneumatic connection	D	L	L1	≅	Part no.	Type
D1	∅					
1/8 NPT	16	43	10	14	12638	U-1/8-B-NPT
1/4 NPT	19.5	63	15	17	12639	U-1/4-B-NPT
3/8 NPT	25	93	15	19	12740	U-3/8-B-NPT
1/2 NPT	28	125	19	24	12741	U-1/2-B-NPT
3/4 NPT	38	151	18	30	566823	U-3/4-B-NPT
1 NPT	47.8	193.3	22.5	41	571280	U-1-B-NPT

Datasheet – Design with push-in sleeve

Function



- To reduce noise at the exhaust ports of pneumatic components
- For QS push-in fittings 3 ... 10 mm



General technical data		3	4	6	8	10
Push-in sleeve \varnothing		3	4	6	8	10
Mounting position		Any				
Noise level ¹⁾	[dB (A)]	< 60	< 60	< 60	< 60	< 68
Flow rate with respect to atmosphere ²⁾	[l/min]	170	350	800	1500	3100
Product weight	[g]	0.4	0.5	1.1	2.3	5.5

1) Measured at 0.6 MPa with respect to atmosphere at a distance of 1 m

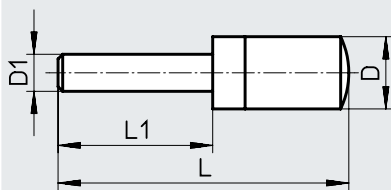
2) Measured at $p_1 = 0.6$ MPa

Operating and environmental conditions		
Operating pressure	[MPa]	0 ... 1
	[bar]	0 ... 10
	[psi]	0 ... 145
Operating medium		Compressed air to ISO 8573-1:2010 [7:-:-]
Note on the operating/pilot medium		Lubricated operation possible
Ambient temperature	[°C]	-10 ... +70

Materials	
Screwed plug	PE
Cushioning insert	PE
Note on materials	RoHS-compliant
LABS (PWIS) conformity	VDMA24364-B1/B2-L

Dimensions

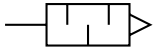
Download CAD data → www.festo.com



Ordering data		D	L	L1	Part no.	Type
Push-in sleeve \varnothing	D1	\varnothing				
	3	7.8 +0.1/-0.3	29.1 ±0.6	14.4 ±0.2	165005	UC-QS-3H
	4	7.8 +0.1/-0.3	31.0 ±0.6	16.3 ±0.2	165006	UC-QS-4H
	6	9.8 -0.4	41.3 +1.4	17.2	165007	UC-QS-6H
	8	13.8 +0.2/-0.3	54.4 +0.5/-1.0	23.4	175611	UC-QS-8H
	10	17.8 -0.3	68.7 +0.2/-0.8	26.7	526475	UC-QS-10H

Datasheet – Design with threaded connection

Function



- To reduce noise at the exhaust ports of pneumatic components
- For solenoid valves CPE, Compact Performance



General technical data		M5	M7	G1/8	G1/4	G3/8
Pneumatic connection		M5	M7	G1/8	G1/4	G3/8
Mounting position		Any				
Noise level ¹⁾	[dB (A)]	< 60	< 58	< 59	< 60	< 60
Flow rate with respect to atmosphere ²⁾	[l/min]	350	800	1700	3200	5000
Product weight	[g]	0.4	1.2	2.6	5.2	10.5

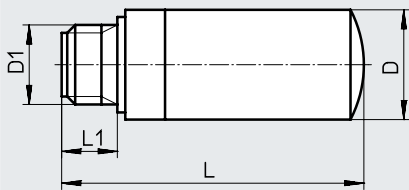
- 1) Measured at 0.6 MPa with respect to atmosphere at a distance of 1 m
 2) Measured at p1 = 0.6 MPa

Operating and environmental conditions		
Operating pressure	[MPa]	0 ... 1
	[bar]	0 ... 10
	[psi]	0 ... 145
Operating medium	Compressed air to ISO 8573-1:2010 [7:-;-]	
Note on the operating/pilot medium	Lubricated operation possible	
Ambient temperature	[°C]	-10 ... +70

Materials	
Screwed plug	PE
Cushioning insert	PE
Note on materials	RoHS-compliant
LABS (PWIS) conformity	VDMA24364-B1/B2-L

Dimensions

Download CAD data → www.festo.com

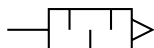


Ordering data		D	L	L1	Part no.	Type	PU ¹⁾
Pneumatic connection	D1	Ø					
M5		7.8 +0.1/-0.3	19.4 +0.6/-0.8	4.5 ±0.2	165003	UC-M5	1
					534217	UC-M5-50 ²⁾	50
M7		9.8 -0.4	30.7 +0.6/-0.8	5.5 -0.5	161418	UC-M7	1
					534218	UC-M7-50 ²⁾	50
G1/8		13.8 +0.2/-0.3	38.0 +0.8/-1.0	6.5 ±0.1	161419	UC-1/8	1
					534219	UC-1/8-50 ²⁾	50
G1/4		17.8 -0.3	50.8 +0.8/-1.0	8.5 ±0.15	165004	UC-1/4	1
					534220	UC-1/4-20 ²⁾	20
G3/8		22.1 -0.4	69.5 +0.6/-0.8	9.5 ±0.1	1707427	UC-3/8	1
					576759	UC-3/8-20 ²⁾	20

- 1) Packaging unit
 2) PWIS conformity: VDMA24364-B2-L

Datasheet

Function



- For solenoid valves VUVB-ST12/ valve terminal VTUB-12
- Mounting via PIN (spring clip), included in the scope of delivery of the valve



General technical data

Pneumatic connection		Cartridge 10 mm
Mounting position		Any
Noise level ¹⁾	[dB (A)]	≤ 58
Flow rate with respect to atmosphere ²⁾	[l/min]	800
Product weight	[g]	2.0

1) Measured at 0.6 MPa with respect to atmosphere at a distance of 1 m

2) Measured at p1 = 0.6 MPa

Operating and environmental conditions

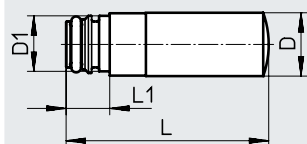
Operating pressure	[MPa]	0 ... 1
	[bar]	0 ... 10
	[psi]	0 ... 145
Operating medium		Compressed air to ISO 8573-1:2010 [7:-:-]
Note on the operating/ pilot medium		Lubricated operation possible
Ambient temperature	[°C]	-5 ... +60

Materials

Screwed plug	PE
Cushioning insert	PE
Note on materials	RoHS-compliant
LABS (PWIS) conformity	VDMA24364-B1/B2-L

Dimensions

Download CAD data → www.festo.com



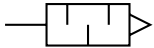
Ordering data

Pneumatic connection	D ∅	D1 ∅	L	L1	Part no.	Type	PU ¹⁾
Cartridge 10 mm	9.8	8.9	31.4	6.8	1224460	AMTC-P-PC10	1

1) Packaging unit

Datasheet – Short design

Function



- Suitable for reducing noise at the exhaust ports of pneumatic systems



General technical data		M5	G1/8	G1/4	G3/8	G1/2
Pneumatic connection		M5	G1/8	G1/4	G3/8	G1/2
Mounting position		Any				
Noise level ¹⁾	[dB (A)]	< 71	< 92	< 95	< 92	< 92
Flow rate with respect to atmosphere ²⁾	[l/min]	91	615	1000	1545	2745
Product weight	[g]	1.1	5	9.5	17	30

- 1) Measured at 0.6 MPa with respect to atmosphere at a distance of 1 m
 2) Measured at p1 = 0.6 MPa

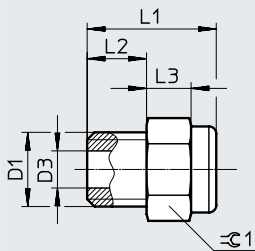
Operating and environmental conditions		
Operating pressure	[MPa]	0 ... 1
	[bar]	0 ... 10
	[psi]	0 ... 145
Operating medium		Compressed air to ISO 8573-1:2010 [7:-:-]
Note on the operating/pilot medium		Lubricated operation possible
Ambient temperature	[°C]	-40 ... +80
Corrosion resistance class CRC ¹⁾		1 - Low corrosion stress

- 1) More information: www.festo.com/x/topic/crc

Materials	
Screwed plug	Brass
Cushioning insert	Bronze
Note on materials	RoHS-compliant
LABS (PWS) conformity	VDMA24364-B1/B2-L

Dimensions

Download CAD data → www.festo.com

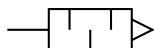


Ordering data	D3	L1	L2	L3	≡C 1	Part no.	Type	PU ¹⁾
Pneumatic connection	∅	±0.5	±0.1		-0.2			
D1								
M5	2.5	8.7	4	3	6	1206621	AMTE-M-H-M5	20
G1/8	6.5	11.8	5.5	3.5	12	1206622	AMTE-M-H-G18	20
G1/4	9	13.8	6.5	4	15	1206623	AMTE-M-H-G14	20
G3/8	12	16.5	7.5	6	19	1206624	AMTE-M-H-G38	10
G1/2	15	19	10	6	24	1206625	AMTE-M-H-G12	10

- 1) Packaging unit

Datasheet – Long design

Function



- Suitable for reducing noise at the exhaust ports of pneumatic systems



General technical data		M3	M5	G1/8	G1/4	G3/8	G1/2	G3/4	G1
Pneumatic connection									
Mounting position		Any							
Noise level ¹⁾	[dB (A)]	< 55	< 72	< 76	< 83	< 82	< 88	< 85	< 88
Flow rate with respect to atmosphere ²⁾	[l/min]	95	255	1735	3140	5430	10500	12400	17235
Product weight	[g]	0.4	1.5	7.5	13	26	43	80	115

1) Measured at 0.6 MPa with respect to atmosphere at a distance of 1 m

2) Measured at p1 = 0.6 MPa

Operating and environmental conditions		
Operating pressure	[MPa]	0 ... 1
	[bar]	0 ... 10
	[psi]	0 ... 145
Operating medium		Compressed air to ISO 8573-1:2010 [7:-:-]
Note on the operating/pilot medium		Lubricated operation possible
Ambient temperature	[°C]	-40 ... +80
Corrosion resistance class CRC ¹⁾		1 - Low corrosion stress

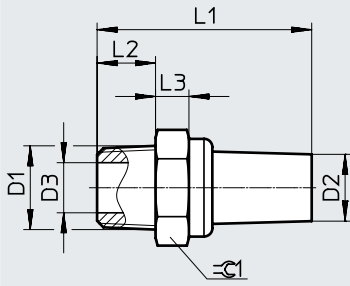
1) More information: www.festo.com/x/topic/crc

Materials	
Screwed plug	Brass
Cushioning insert	Bronze
Note on materials	RoHS-compliant
LABS (PWIS) conformity	VDMA24364-B1/B2-L

Datasheet – Long design

Dimensions

Download CAD data → www.festo.com



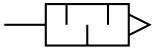
★ Core Range

Ordering data	D2	D3	L1	L2	L3	≡G1	Part no.	Type	PU ¹⁾
Pneumatic connection D1	∅ ±0.5	∅	±1	±0.1		-0.2			
M3	2	1.5	14	3	2	4	1231120	AMTE-M-LH-M3	20
M5	3	2.5	19.8	4	3	6	★ 1205858	AMTE-M-LH-M5	20
G1/8	8	6.5	23.7	5.5	3.5	12	★ 1205860	AMTE-M-LH-G18	20
G1/4	10	9	29	6.5	4	15	★ 1205861	AMTE-M-LH-G14	20
G3/8	12	12	41	7.5	6	19	★ 1205862	AMTE-M-LH-G38	10
G1/2	16	15	46.5	10	6	24	★ 1205863	AMTE-M-LH-G12	10
G3/4	20.5	20	50	10	6	30	1205864	AMTE-M-LH-G34	10
G1	20.5	26	59	10	6	36	1205865	AMTE-M-LH-G1	10

1) Packaging unit

Datasheet – Long design

Function



- Suitable for reducing noise at the exhaust ports of pneumatic systems



General technical data		10-32 UNF-2A	1/8 NPT	1/4 NPT	3/8 NPT	1/2 NPT
Pneumatic connection		10-32 UNF-2A	1/8 NPT	1/4 NPT	3/8 NPT	1/2 NPT
Mounting position		Any				
Noise level ¹⁾	[dB (A)]	< 71	< 77	< 82	< 83	< 85
Flow rate with respect to atmosphere ²⁾	[l/min]	260	1615	3080	5365	9240
Product weight	[g]	1.7	9	17	29	46

- 1) Measured at 0.6 MPa with respect to atmosphere at a distance of 1 m
 2) Measured at p1 = 0.6 MPa

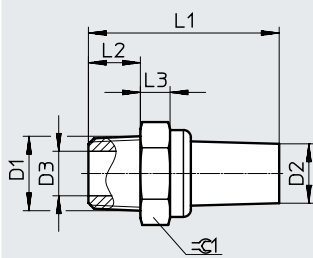
Operating and environmental conditions		
Operating pressure	[MPa]	0 ... 1
	[bar]	0 ... 10
	[psi]	0 ... 145
Operating medium		Compressed air to ISO 8573-1:2010 [7:-:-]
Note on the operating/pilot medium		Lubricated operation possible
Ambient temperature	[°C]	-40 ... +80
Corrosion resistance class CRC ¹⁾		1 - Low corrosion stress

- 1) More information: www.festo.com/x/topic/crc

Materials	
Screwed plug	Brass
Cushioning insert	Bronze
Note on materials	RoHS-compliant
LABS (PWIS) conformity	VDMA24364-B2-L

Dimensions

Download CAD data → www.festo.com

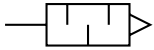


Ordering data		D2	D3	L1	L2	L3	≙G1	Part no.	Type	PU ¹⁾
Pneumatic connection	D1	∅ ±0.5	∅	±1	±0.1		-0.2			
10-32 UNF-2A		3	2.5	20.3	4	3.5	6	1206994	AMTE-M-LH-U10	20
1/8 NPT		8	6	25.7	7	4	12	1206989	AMTE-M-LH-N18	20
1/4 NPT		10	9	34.5	11	5	15	1206990	AMTE-M-LH-N14	20
3/8 NPT		12	11.5	43.2	11	5.5	19	1206991	AMTE-M-LH-N38	10
1/2 NPT		16	15	49	13	5.5	24	1206992	AMTE-M-LH-N12	10

- 1) Packaging unit

Datasheet

Function



- Use only for vacuum generators VN-T2/T3
- Special minimal resistance silencer
- Facilitates trouble-free operation of the vacuum generator



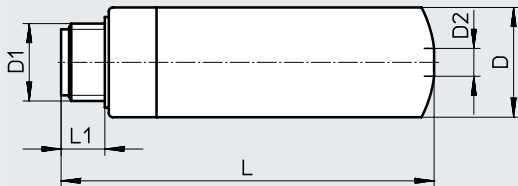
General technical data				
Pneumatic connection	M5	M7	G1/8	G1/4
Mounting position	Any			
Design	Open silencer			
Product weight [g]	0.5	2.5	5	8

Operating and environmental conditions		
Operating pressure	[MPa]	0 ... 0.8
	[bar]	0 ... 8
	[psi]	0 ... 116
Operating medium	Compressed air to ISO 8573-1:2010 [7:4:4]	
Ambient temperature [°C]	-10 ... +60	

Materials	
Screwed plug	PE
Cushioning insert	PE
Note on materials	RoHS-compliant
LABS (PWIS) conformity	VDMA24364-B1/B2-L

Dimensions

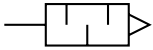
Download CAD data → www.festo.com



Ordering data						
Pneumatic connection	D	D2	L	L1	Part no.	Type
D1	∅	∅				
M5	7.8	2.1	19.3	4.5	8141085	UO-M5
M7	9.8	3	36.7	5.5	197582	UO-M7
G1/8	13.8	3.5	48	6.5	197583	UO-1/8
G1/4	17.8	5.3	62.3	8.5	197584	UO-1/4

Datasheet

Function



- Use only for vacuum generators VN-T4/T6
- Special minimal resistance silencer
- Facilitates trouble-free operation of the vacuum generator
- Silencer extension for extending the silencer for further noise reduction



General technical data				
Type	UOM-1/4	UOM-3/8	UOMS-1/4	UOMS-3/8
Pneumatic connection	G1/4	G3/8	–	
Design	Open silencer			
Type of mounting	Screw-in		Snap-in	
Mounting position	Any			
Type of seal on the screwed trunnion	No seal			
Product weight [g]	11.1	22.7	8.6	17.5

Operating and environmental conditions		
Operating pressure of vacuum generator	[MPa]	0 ... 0.8
	[bar]	0 ... 8
	[psi]	0 ... 116
Ambient temperature	[°C]	0 ... +60
Corrosion resistance class	CRC ¹⁾	2 - Moderate corrosion stress

1) More information: www.festo.com/x/topic/crc

Materials	
Housing	POM
Inner pipe	Wrought aluminium alloy
Screwed plug	POM
Cushioning insert	Polyurethane foam
LABS (PWIS) conformity	VDMA24364-B2-L

Dimensions

UOM

Download CAD data → www.festo.com

UOMS

Ordering data							
Pneumatic connection	D	D2	L	L1	L2	Part no.	Type
D1	∅	∅					
Silencers							
G1/4	17.8	–	73	8	10	538432	UOM-1/4
G3/8	23.8	–	74	8.6	10.5	538433	UOM-3/8
Silencer extension							
For UOM-1/4	17.8	16	64.5	–	10	538436	UOMS-1/4
For UOM-3/8	23.8	22	65.2	–	10.5	538437	UOMS-3/8