

Valve plug connectors for self-assembly

FESTO



Festo Core Range
Solves the majority of your automation tasks

With the Festo Core Range, we have selected the most important products and functions from our broad product catalogue, and added the quickest delivery.

Worldwide: Quickest delivery – wherever, whenever
Simply good: Expected high Festo quality
Fast: Easy and fast to select

The Core Range offers you the best value for your automation tasks.

Just look
for the
star!

Product range overview

| Function | Design | Type | Number of pins/wires | → Page/ Internet |
|----------------|---|-----------|----------------------|---------------------|
| Plug connector | Electrical connection 1, socket type A | | | |
| | To EN 175301-803 | MSSD-C | 3-pin | 4 |
| | | MSSD-N | | |
| | | MSSD-C | 4-pin | 6 |
| | Electrical connection 1, socket type B | | | |
| | To EN 175301-803 | MSSD-V | 3-pin | 8 |
| | To industry standard, 11 mm | MSSD-F | 3-pin | 10 |
| | Electrical connection 1, socket type C | | | |
| | To EN 175301-803 | MSSD-EB | 3-pin | 12 |
| | | | 4-pin | 14 |
| | To industry standard, 9.4 mm | MSSD-E | 3-pin | 16 |
| | Electrical connection 1, socket plug pattern ZB/ZC | | | |
| | – | MSSD-ZBZC | 4-pin | 18 |

Type codes

| | | |
|-------------|---------------|--|
| 001 | Series | |
| MSSD | Plug socket | |

| | | |
|-------------|---|--|
| 002 | Electrical connection 1, connection technology | |
| C | Type A to EN 175301-803 | |
| F | Type B as per industry standard 11 mm | |
| E | Type C as per industry standard 9.4 mm | |
| EB | Type C to EN 175301-803 | |
| N | Type A to EN 175301-803 | |
| V | Type B to EN 175301-803 | |
| ZBZC | Connection pattern ZB/ZC | |

| | | |
|------------|--|--|
| 003 | Electrical connection 1, number of pins/wires | |
| | Standard | |
| 4P | 4-pin | |

| | | |
|------------|---|--|
| 004 | Electrical connection 2, connection technology | |
| | Standard | |
| S | Insulation displacement connector | |

| | | |
|------------|------------------------|--|
| 005 | Cable connector | |
| | Standard | |
| M12 | M12 | |
| M14 | M14 | |
| M16 | M16 | |
| TY | Pg11 | |

| | | |
|--------------|--------------------------------|--|
| 006 | Operating voltage range | |
| | Standard | |
| 24DC | 0 ... 30 V DC, 0 ... 24 V AC | |
| 24VDC | 0 ... 30 V DC, 0 ... 24 V AC | |

| | | |
|------------|----------------|--|
| 007 | Version | |
| | Standard | |
| SD | Special design | |

| | | |
|------------|-------------------------|--|
| 008 | EU certification | |
| | None | |
| EX2 | II 3GD | |

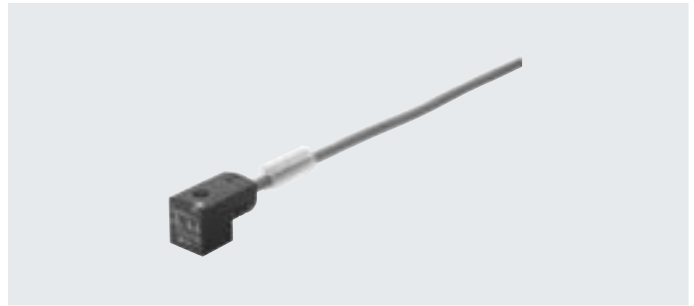
Datasheet

Plug socket

MSSD-C

MSSD-N

- For valves with D solenoid coil
- For valves with N1 solenoid coil
- For valves with H solenoid coil
- For valve series VZWM-L
- Cable connection with screw terminal



| General technical data | | | | | |
|--|--|--|--|----------------|---|
| Type | MSSD-C | MSSD-C-M16 | MSSD-N | MSSD-C-TY-24DC | |
| Based on norm | – | – | EN 175301-803 | – | |
| Electrical connection 1 | | | | | |
| Connection type | Socket | Socket | Socket | – | |
| Cable outlet | Angled | Angled | Angled | – | |
| Note on cable outlet | Can be rotated 90° | – | – | – | |
| Protective earth connection | Available | – | – | – | |
| Design | Square | Square | Square | – | |
| Connection technology | Plug pattern type A to DIN EN 175301-803 | Plug pattern type A to DIN EN 175301-803 | Plug pattern type A to EN 175301-803 | – | |
| Number of pins/wires | 3 | 3 | 3 | – | |
| Type of mounting | On solenoid valve with M3 central screw | On solenoid valve with M3 central screw | On solenoid valve with M3 central screw | – | |
| Mounting position | Any | – | Any | – | |
| Contact durability | – | 50 | – | – | |
| Electrical connection 2 | | | | | |
| Connection technology | Screw terminal | – | Screw terminal | – | |
| Cable connector | Pg9 | M16 | M20x1.5 | – | |
| Cable diameter [mm] | 6 ... 8 | 6 ... 8 | 8 ... 10 | – | |
| Nominal conductor cross section [mm ²] | 1.5 | 1.5 | 1.5 | – | |
| Technical data – Electrics | | | | | |
| Type | MSSD-C | MSSD-C-M16 | MSSD-N | MSSD-C-TY-24DC | |
| Operating voltage range | [V DC] | 0 ... 300 | – | 0 ... 24 | – |
| | [V AC] | 0 ... 250 | – | 0 ... 250 | – |
| Acceptable current load at 40°C | [A] | 16 | – | 16 | – |
| Materials | | | | | |
| Type | MSSD-C | MSSD-C-M16 | MSSD-N | MSSD-C-TY-24DC | |
| Housing | Polymer | Reinforced PA | Reinforced PA | – | |
| Housing colour | Black | – | Black | – | |
| Screws | – | – | Steel | – | |
| Seals | NBR | HNBR | VMQ | – | |
| Note on materials | RoHS-compliant | RoHS-compliant | RoHS-compliant | – | |
| | – | – | Contains paint-wetting impairment substances | – | |
| LABS (PWIS) conformity | VDMA24364-B2-L | – | – | – | |

Datasheet

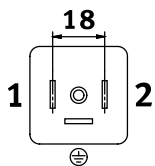
| Operating and environmental conditions | | MSSD-C | MSSD-C-M16 | MSSD-N | MSSD-C-TY-24DC |
|--|--|--------------|--------------|------------------|----------------|
| Type | | | | | |
| Ambient temperature [°C] | | -25 ... +90 | -20 ... +115 | -25 ... +80 | -40 ... +90 |
| Storage temperature [°C] | | -40 ... +90 | - | - | - |
| CE marking (see declaration of conformity) | To EU Low Voltage Directive ¹⁾ | - | - | - | - |
| | To EU RoHS Directive ¹⁾ | - | - | - | - |
| UKCA marking (see declaration of conformity) | To UK regulations for electrical equipment ¹⁾ | - | - | - | - |
| | To UK RoHS regulations ¹⁾ | - | - | - | - |
| Degree of protection | IP65 | IP65 | IP65 | IP65 | IP65 |
| | - | To IEC 60529 | - | - | To IEC 60529 |
| Note on degree of protection | In mounted state | - | - | In mounted state | - |
| Certification | Germanischer Lloyd | - | - | - | - |
| Maritime classification ²⁾ | See certificate | - | - | - | - |

- 1) For information about the area of use, see the EC declaration of conformity at: www.festo.com/catalogue/... → Support/Downloads.
If the devices are subject to usage restrictions in residential, commercial or light-industrial environments, further measures for the reduction of the emitted interference may be necessary.
- 2) Additional information: www.festo.com/catalogue/... → Support/Downloads.

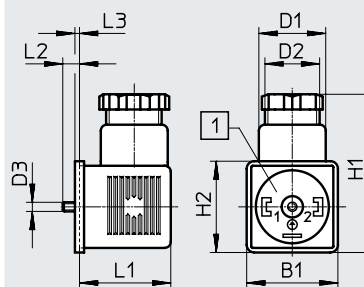
Dimensions

Download CAD data → www.festo.com

Pin allocation

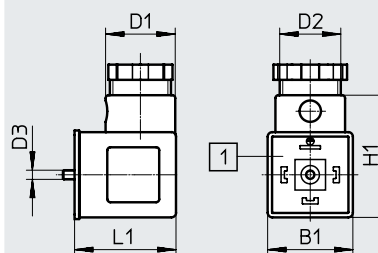


MSSD-C



[1] Insert can be rotated 90°

MSSD-N



[1] Plug pattern type A to EN 175301-803

| Type | B1 | D1 ∅ | D2 ∅ | D3 ∅ | H1 | H2 | L1 | L2 | L3 |
|----------------|------|---------|----------|---------|----|----|------|-----|-----|
| MSSD-C | 28 | 22 | PG9 | M3 | 52 | 28 | 26.5 | 5.5 | 1.5 |
| MSSD-C-M16 | 27 | 22 | M16x 1.5 | M3 | 52 | 27 | 27 | 5.5 | 1.5 |
| MSSD-C-TY-24DC | 30 | 22 | PG11 | M3 | 52 | 30 | 30 | 5.5 | 1.5 |
| MSSD-N | 27.9 | 22.8 | M20x1.5 | M3 | 40 | - | 33.2 | - | - |

Ordering data

| Description | Signal status indication | Nominal conductor cross section [mm ²] | Weight [g] | Part no. | Type |
|---|--------------------------|--|------------|-----------------|-----------------------|
| Socket, plug pattern type A to EN 175301-803, 3-pin, angled | - | 6 ... 8 | 22 | 34583 | MSSD-C |
| | | | 38 | 539709 | MSSD-C-M16 |
| | | 8 ... 10 | 30 | ★ 550067 | MSSD-N |
| | LED | ≤ 1.5 | - | 177617 | MSSD-C-TY-24DC |

Datasheet

Plug socket MSSD-C

- For valves with D and N1 solenoid coils
- Cable connection with screw terminal or insulation displacement technology



Special features of insulation displacement technology (MSSD-C-S-M16)

With these plug sockets, the cable is no longer connected using individual clamping screws.

Instead, the flying leads are pressed into the patented insulation displacement contact when the screw is tightened.

- Strip the cable sheath
- Push it in
- Screw it in tightly
- And you're done!

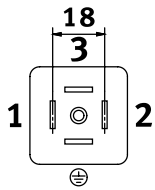
| General technical data | | |
|--|--|--|
| Type | MSSD-C-4P | MSSD-C-S-M16 |
| Electrical connection 1 | | |
| Connection type | Socket | Socket |
| Cable outlet | Angled | – |
| Design | Square | Square |
| Connection technology | Plug pattern type A to DIN EN 175301-803 | Plug pattern type A to DIN EN 175301-803 |
| Number of pins/wires | 3 | 4 |
| Type of mounting | On solenoid valve with M3 central screw | On solenoid valve with M3 central screw |
| Mounting position | Any | |
| Contact durability | – | 10 |
| Electrical connection 2 | | |
| Connection technology | Screw terminal | Insulation displacement connector |
| Cable connector | Pg9 | – |
| Cable diameter [mm] | 6 ... 8 | 5.5 ... 8 |
| Nominal conductor cross section [mm ²] | ≤ 1.5 | 0.5 ... 1 |
| Materials | | |
| Type | MSSD-C-4P | MSSD-C-S-M16 |
| Housing | Polymer | PA |
| Housing colour | Black | Black |
| Note on materials | RoHS-compliant | RoHS-compliant |
| Operating and environmental conditions | | |
| Type | MSSD-C-4P | MSSD-C-S-M16 |
| Ambient temperature [°C] | –25 ... +90 | –20 ... +90 |
| Degree of protection | IP65 | IP67 |
| | – | To IEC 60529 |

Datasheet

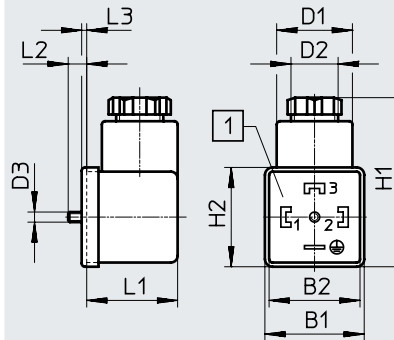
Dimensions

Download CAD data → www.festo.com

Pin allocation

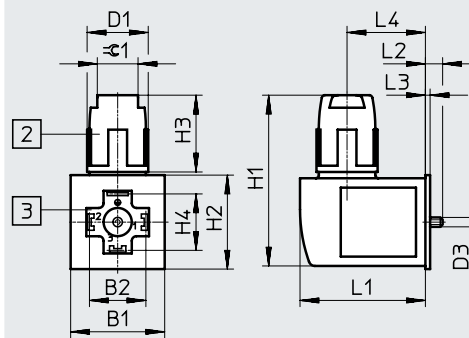


MSSD-C-4P



[1] Insert can be rotated 90°

MSSD-CS-M16



[2] Union nut M16x1

[3] Connection side can be rotated 90°

| Type | B1 | B2 | D1 ∅ | D2 ∅ | D3 ∅ | H1 | H2 | H3 | H4 | L1 | L2 | L3 | L4 | ≙C1 |
|-------------|------|----|---------|---------|---------|------|------|------|----|----|-----|-----|----|-----|
| MSSD-C-4P | 29.5 | 27 | 23.8 | Pg9 | M3 | 49 | 29.5 | 42 | – | 27 | 5.5 | 1.5 | – | – |
| MSSD-CS-M16 | 30 | 18 | 19.5 | – | M3 | 54.5 | 30 | 24.5 | 18 | 40 | 5.5 | 1.5 | 25 | 13 |

Ordering data

| Description | Cable connection | Weight [g] | Part no. | Type |
|---|-----------------------------------|------------|----------|-------------|
| Socket, plug pattern type A to DIN EN 175301-803, 4-pin, angled | Screw terminal | 22 | 171157 | MSSD-C-4P |
| | Insulation displacement connector | 38 | 192748 | MSSD-CS-M16 |

Datasheet

Plug socket MSSD-V

- For valves with V solenoid coil
- Cable connection with screw terminal



| General technical data | | |
|--|--|--|
| Type | MSSD-V-M16 | MSSD-V |
| Electrical connection 1 | | |
| Connection type | Socket | Socket |
| Cable outlet | Angled | Angled |
| Note on cable outlet | – | Can be rotated 180° |
| Protective earth connection | – | Available |
| Design | Square | Square |
| Mounting position | Any | Any |
| Connection technology | Plug pattern type B to DIN EN 175301-803 | Plug pattern type B to DIN EN 175301-803 |
| Number of pins/wires | 3 | 3 |
| Type of mounting | On solenoid valve with M3 central screw | On solenoid valve with M3 central screw |
| Contact durability | 50 | – |
| Electrical connection 2 | | |
| Connection technology | Screw terminal | Screw terminal |
| Cable connector | M16 | Pg9 |
| Cable diameter [mm] | – | 6 ... 8 |
| Permissible cable diameter [mm] | 6 ... 8 | – |
| Nominal conductor cross section [mm ²] | – | Max. 1.5 |
| Connection cross section [mm ²] | 0.75 | – |
| Technical data – Electrics | | |
| Type | MSSD-V-M16 | MSSD-V |
| Operating voltage range | [V DC] | 0 ... 250 |
| | [V AC] | 0 ... 250 |
| Acceptable current load at 40°C [A] | – | 16 |
| Materials | | |
| Type | MSSD-V-M16 | MSSD-V |
| Housing | Reinforced PA | Polymer |
| Housing colour | – | Black |
| Seals | HNBR | NBR |
| LABS (PWIS) conformity | – | VDMA24364-B2-L |
| Operating and environmental conditions | | |
| Type | MSSD-V-M16 | MSSD-V |
| Ambient temperature [°C] | –20 ... +115 | –25 ... +90 |
| CE marking (see declaration of conformity) ¹⁾ | – | To EU Low Voltage Directive |
| | – | To EU RoHS Directive |
| UKCA marking (see declaration of conformity) ¹⁾ | – | – |
| | – | – |
| Degree of protection | IP65 | IP65 |
| | To IEC 60529 | – |
| Note on degree of protection | – | In mounted state |

1) For information about the area of use, see the EC declaration of conformity at: www.festo.com/catalogue/... → Support/Downloads.

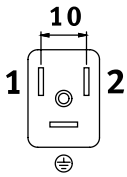
If the devices are subject to usage restrictions in residential, commercial or light-industrial environments, further measures for the reduction of the emitted interference may be necessary.

Datasheet

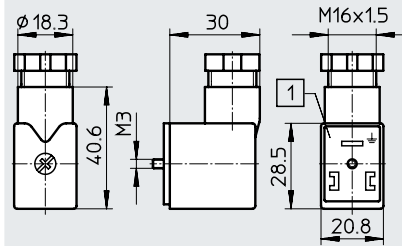
Dimensions

Download CAD data → www.festo.com

Pin allocation

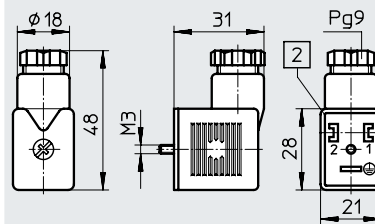


MSSD-V-M16



[1] Insert can be rotated 180°

MSSD-V



[2] Insert can be rotated 180°

Ordering data

| Description | Cable connection | Nominal conductor cross section [mm ²] | Weight [g] | Part no. | Type |
|---|------------------|--|------------|---------------|-------------------|
| Socket, plug pattern type B to DIN EN 175301-803, 3-pin, angled | Screw terminal | Max. 0.75 | 35 g | 539713 | MSSD-V-M16 |
| | | Max. 1.5 | 18 g | 33295 | MSSD-V |

Datasheet

Plug socket MSSD-F

- For valves with F solenoid coils
- Cable connection with screw terminal or insulation displacement technology



| General technical data | | | | |
|--|---|---|---|--|
| Type | MSSD-F-M16 | MSSD-F | MSSD-FS-M16 | |
| Electrical connection 1 | | | | |
| Connection type | Socket | Socket | Socket | |
| Cable outlet | Angled | Angled | – | |
| Note on cable outlet | Can be rotated 180° | Can be rotated 180° | – | |
| Design | Square | Square | Square | |
| Mounting position | – | Any | Any | |
| Connection technology | Plug pattern type B to industry standard, 11 mm | Plug pattern type B to industry standard, 11 mm | Plug pattern type B to industry standard, 11 mm | |
| Number of pins/wires | 3 | 3 | 3 | |
| Type of mounting | On solenoid valve with M3 central screw | On solenoid valve with M3 central screw | On solenoid valve with M3 central screw | |
| Note on cable outlet | Can be rotated 180° | – | – | |
| Contact durability | 50 | – | 10 | |
| Protective earth connection | Available | Available | – | |
| Electrical connection 2 | | | | |
| Connection technology | Screw terminal | Screw terminal | Insulation displacement connector | |
| Cable connector | M16x1.5 | Pg9 | M16x1.5 | |
| Cable diameter [mm] | 6 ... 8 | 6 ... 8 | 5.5 ... 8 | |
| Nominal conductor cross section [mm ²] | Max. 0.75 | Max. 1.5 | 0.5 ... 1 | |
| Technical data – Electrics | | | | |
| Type | MSSD-F-M16 | MSSD-F | MSSD-FS-M16 | |
| Operating voltage range | [V DC] | 0 ... 250 | 0 ... 250 | |
| | [V AC] | 0 ... 250 | 0 - 250 V | |
| Surge resistance [kV] | 2 | – | – | |
| Acceptable current load at 40°C [A] | 6 | 16 | – | |
| Materials | | | | |
| Type | MSSD-F-M16 | MSSD-F | MSSD-FS-M16 | |
| Housing | Reinforced PA | Polymer | PA | |
| Housing colour | Black | Black | Black | |
| Seals | HNBR | NBR | – | |
| Note on materials | RoHS-compliant | – | – | |
| LABS (PWIS) conformity | – | VDMA24364-B2-L | – | |

Datasheet

| Operating and environmental conditions | | | |
|--|------------------|--|------------------|
| Type | MSSD-F-M16 | MSSD-F | MSSD-F-S-M16 |
| Ambient temperature [°C] | -20 ... +115 | -25 ... +90 | -25 ... +90 |
| Corrosion resistance class CRC ¹⁾ | 1 | - | - |
| Pollution degree | 3 | - | - |
| CE marking (see declaration of conformity) ²⁾ | - | To EU Low Voltage Directive | - |
| | - | To EU RoHS Directive | - |
| UKCA marking (see declaration of conformity) ²⁾ | - | To UK regulations for electrical equipment | - |
| | - | To UK RoHS regulations | - |
| Degree of protection | IP65 | IP65 | IP67 |
| | - | - | To IEC 60529 |
| Note on degree of protection | In mounted state | In mounted state | In mounted state |

1) Corrosion resistance class CRC 1 to Festo standard FN 940070

Low corrosion stress. Dry internal application or transport and storage protection. Also applies to parts behind covers, in the non-visible interior area, or parts that are covered in the application (e.g. drive trunnions).

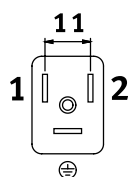
2) For information about the area of use, see the EC declaration of conformity at: www.festo.com/catalogue/... → Support/Downloads.

If the devices are subject to usage restrictions in residential, commercial or light-industrial environments, further measures for the reduction of the emitted interference may be necessary.

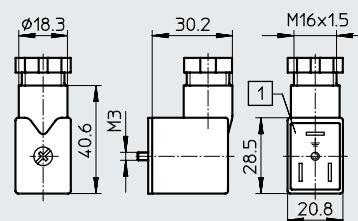
Dimensions

Download CAD data → www.festo.com

Pin allocation

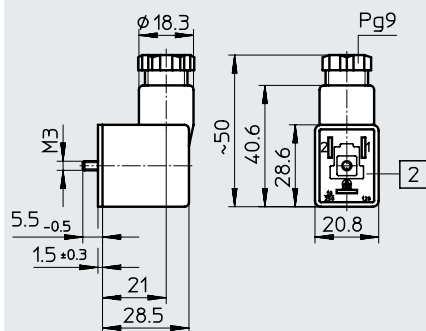


MSSD-F-M16



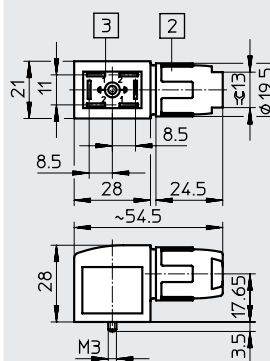
[1] Insert can be rotated 180°

MSSD-F



[2] Insert can be rotated 180°

MSSD-F-S-M16



[2] Union nut M16x1

[3] Connection side can be rotated 90°

With these plug sockets, instead of the cable being connected using individual clamping screws, the flying leads are pressed into the patented insulation displacement contact when the screw is tightened:

- Strip the cable sheath
- Push it in
- Screw it in tightly
- And you're done!

Ordering data

| Description | Cable connection | Nominal conductor cross section [mm ²] | Weight [g] | Part no. | Type |
|---|-----------------------------------|--|------------|----------|--------------|
| Socket, plug pattern type B, to industry standard, 11 mm, 3-pin, angled | Screw terminal | Max. 0.75 | 35 | 539710 | MSSD-F-M16 |
| | | Max. 1.5 | 17 | ★ 34431 | MSSD-F |
| | Insulation displacement connector | 0.5 ... 1 | 35 | 192746 | MSSD-F-S-M16 |

Datasheet

Plug socket MSSD-EB

- For valves with EB and N2 solenoid coils



| General technical data | | MSSD-EB-M12-24VDC-SD-EX | MSSD-EB | MSSD-EB-M12 |
|-----------------------------------|--------------------|---|---|---|
| Type | | | | |
| Electrical connection 1 | | | | |
| Connection type | | Socket | Socket | Socket |
| Cable outlet | | Angled | Angled | Angled |
| Protective earth connection | | – | Available | – |
| Switching position indication | | – | – | – |
| Design | | Square | Square | Square |
| Mounting position | | – | Any | Any |
| Connection technology | | Plug pattern type C to DIN EN 175301-803 | Plug pattern type C to DIN EN 175301-803, to DIN EN 61984 | Plug pattern type C to DIN EN 175301-803 |
| Number of pins/wires | | 3 | 3 | 3 |
| Type of mounting | | On solenoid valve with M2.5 central screw | On solenoid valve with M2.5 central screw | On solenoid valve with M2.5 central screw |
| Note on cable outlet | | Can be rotated 180° | Can be rotated 90° | – |
| Contact durability | | – | – | 50 |
| Electrical connection 2 | | | | |
| Connection technology | | Screw terminal | Screw terminal | Insulation displacement connector |
| Cable connector | | M12 | Pg7 | M12 |
| Cable diameter | [mm] | 4 ... 6 | 6 ... 8 | 4 ... 6 |
| Permissible cable diameter | [mm] | 4 ... 6 | 7.5 | 4 ... 6 |
| Nominal conductor cross section | [mm ²] | – | ≤ 0.75 | – |
| Connection cross section | [mm ²] | 0.25 ... 0.5 | 0.75 | 1.5 |
| Technical data – Electrics | | | | |
| Type | | MSSD-EB-M12-24VDC-SD-EX | MSSD-EB | MSSD-EB-M12 |
| Nominal operating voltage | [V DC] | – | 300 | – |
| | [V AC] | – | 250 | – |
| Operating voltage range | [V DC] | 0 ... 30 | 300 | – |
| | [V AC] | 0 ... 24 | 250 | – |
| Surge resistance | [kV] | 0.8 | 4 | – |
| Current rating | [A] | – | 6 | – |
| Acceptable current load at 40°C | [A] | 6 | 6 | – |
| Materials | | | | |
| Type | | MSSD-EB-M12-24VDC-SD-EX | MSSD-EB | MSSD-EB-M12 |
| Housing | | Reinforced PA | Polymer | Reinforced PA |
| Housing colour | | – | Black | – |
| Seals | | HNBR | NBR | HNBR |
| Note on materials | | RoHS-compliant | – | – |
| LABS (PWIS) conformity | | – | VDMA24364-B2-L | – |

Datasheet

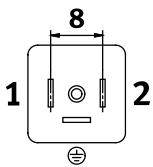
| Operating and environmental conditions | | | |
|--|-------------------------|--|--------------|
| Type | MSSD-EB-M12-24VDC-SD-EX | MSSD-EB | MSSD-EB-M12 |
| Ambient temperature [°C] | -25 ... +125 | -45 ... +90 | -40 ... +125 |
| Pollution degree | 3 | 3 | - |
| CE marking (see declaration of conformity) ¹⁾ | - | To EU Low Voltage Directive | - |
| | - | To EU RoHS Directive | - |
| UKCA marking (see declaration of conformity) ¹⁾ | - | To UK regulations for electrical equipment | - |
| | - | To UK RoHS regulations | - |
| Degree of protection | IP65 | IP65 | IP65 |
| | To IEC 60529 | To IEC 60529 | To IEC 60529 |
| Note on degree of protection | - | In mounted state | - |

- 1) For information about the area of use, see the EC declaration of conformity at: www.festo.com/catalogue/... → Support/Downloads.
If the devices are subject to usage restrictions in residential, commercial or light-industrial environments, further measures for the reduction of the emitted interference may be necessary.

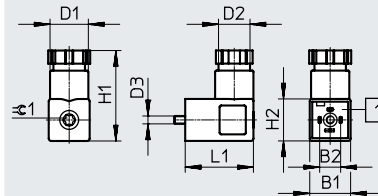
Dimensions

Download CAD data → www.festo.com

Pin allocation

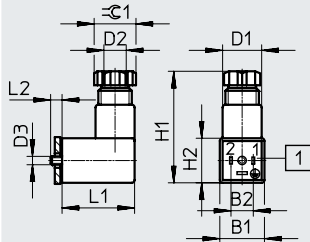


MSSD-EB-M12-24VDC-SD-EX



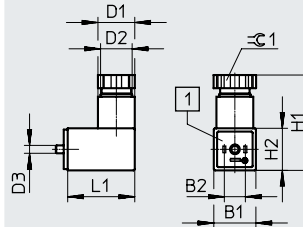
[1] Insert can be rotated 90°

MSSD-EB



[1] Insert can be rotated 90°

MSSD-EB-M12



[1] Insert can be rotated 90°

| Type | B1 | B2 | D1 ∅ | D2 ∅ | D3 ∅ | H1 | H2 | L1 | L2 | ≈C 1 |
|-------------------------|------|----|---------|----------|---------|------|------|------|-----|------|
| MSSD-EB-M12-24VDC-SD-EX | 15.6 | 8 | 14.6 | M12x 1.5 | 2.5 | 34.5 | 16 | 26 | - | T8 |
| MSSD-EB | 15.5 | 8 | 15 | Pg7 | 2.5 | 40 | 15.5 | 26 | 4.1 | 13 |
| MSSD-EB-M12 | 15.5 | 8 | 15 | M12x 1.5 | M2.5 | 33 | 15.5 | 25.5 | - | 13 |

Ordering data

| Description | Cable connection | Nominal conductor cross section [mm ²] | Weight [g] | Part no. | Type |
|---|------------------|--|------------|----------|-------------------------|
| Socket, plug pattern type C to DIN EN 175301-803, 3-pin, angled | Screw terminal | 0.25 ... 0.5 | - | 570367 | MSSD-EB-M12-24VDC-SD-EX |
| | | ≤ 0.75 | 11 g | ★ 151687 | MSSD-EB |
| | | 1.5 | 11 g | 539712 | MSSD-EB-M12 |

Datasheet

Plug socket MSSD-EB

- For valves with EB and N2 solenoid coils



General technical data

Electrical connection 1

| | |
|-----------------------|---|
| Connection type | Socket |
| Cable outlet | Angled |
| Mounting position | Any |
| Design | Square |
| Connection technology | Plug pattern type C |
| Number of pins/wires | 4 |
| Type of mounting | On solenoid valve with M2.5 central screw |
| Contact durability | 10 |

Electrical connection 2

| | |
|--|-----------------------------------|
| Connection technology | Insulation displacement connector |
| Cable diameter [mm] | 4 ... 6 |
| Nominal conductor cross section [mm ²] | 0.25 ... 0.5 |

Materials

| | |
|----------------|-------|
| Housing | PA |
| Housing colour | Black |

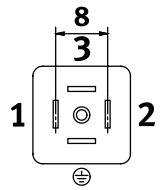
Operating and environmental conditions

| | |
|--------------------------|--------------|
| Ambient temperature [°C] | -25 ... +90 |
| Degree of protection | IP67 |
| | To IEC 60529 |

Datasheet

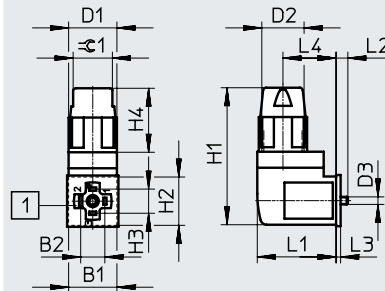
Dimensions

Pin allocation



Download CAD data → www.festo.com

MSSD-EB-S-M14



[1] Insert can be rotated 90°

With these plug sockets, instead of the cable being connected using individual clamping screws, the flying leads are pressed into the patented insulation displacement contact when the screw is tightened.

- Strip the cable sheath
- Push it in
- Screw it in tightly
- And you're done!

| Type | B1 | B2 | D1 ∅ | D2 | D3 ∅ | H1 | H2 | H3 | H4 | L1 | L2 | L3 | L4 | ±0.1 |
|---------------|----|----|---------|-------|---------|----|----|----|------|----|----|-----|------|------|
| MSSD-EB-S-M14 | 16 | 8 | 16 | M14x1 | 2.5 | 45 | 16 | 8 | 21.2 | 26 | 4 | 1.5 | 17.6 | 13 |

| Ordering data | | | | | |
|---|-----------------------------------|--|------------|---------------|----------------------|
| Description | Cable connection | Nominal conductor cross section [mm ²] | Weight [g] | Part no. | Type |
| Socket, plug pattern type C to DIN EN 175301-803, 4-pin, angled | Insulation displacement connector | 0.25 ... 0.5 | 17 | 192745 | MSSD-EB-S-M14 |

Datasheet

Plug socket MSSD-E

- For valves with E solenoid coils



| General technical data | | |
|--|--|--|
| Type | MSSD-E | MSSD-E-M12 |
| Electrical connection 1 | | |
| Connection type | Socket | Socket |
| Cable outlet | Angled | Angled |
| Design | Square | Square |
| Mounting position | – | Any |
| Connection technology | Plug pattern type C to industry standard, 9.4 mm | Plug pattern type C to industry standard, 9.4 mm |
| Number of pins/wires | 3 | 3 |
| Type of mounting | On solenoid valve with M3 central screw | On solenoid valve with M3 central screw |
| Mounting position | Any | – |
| Contact durability | – | 50 |
| Electrical connection 2 | | |
| Connection technology | Screw terminal | Screw terminal |
| Cable connector | Pg7 | M12 |
| Cable diameter [mm] | 6 ... 8 | – |
| Permissible cable diameter [mm] | – | 4 ... 6 |
| Nominal conductor cross section [mm ²] | 0.75 | 0.75 |
| Connection cross section [mm ²] | – | 0.75 |
| Technical data – Electrics | | |
| Operating voltage range | [V DC] | 0 ... 300 |
| | [V AC] | 0 ... 250 |
| Acceptable current load at 40°C | [A] | 6 |
| Materials | | |
| Type | MSSD-E | MSSD-E-M12 |
| Housing | Reinforced PA | Reinforced PA |
| Housing colour | Black | Black |
| Seals | NBR | HNBR |
| Note on materials | – | RoHS-compliant |
| Operating and environmental conditions | | |
| Type | MSSD-E | MSSD-E-M12 |
| Ambient temperature [°C] | –25 ... +90 | –20 ... +115 |
| Corrosion resistance class CRC ¹⁾ | – | 1 |
| Pollution degree | 3 | 3 |
| Degree of protection | IP65 | IP65 |
| | – | To IEC 60529 |
| Note on degree of protection | In mounted state | In mounted state |

1) Corrosion resistance class CRC 1 to Festo standard FN 940070

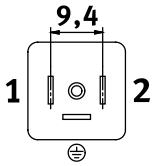
Low corrosion stress. Dry internal application or transport and storage protection. Also applies to parts behind covers, in the non-visible interior area, or parts that are covered in the application (e.g. drive trunnions).

Datasheet

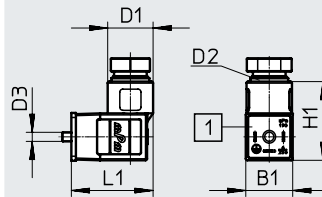
Dimensions

Download CAD data → www.festo.com

Pin allocation

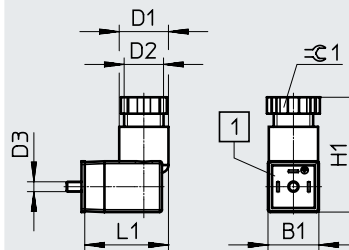


MSSD-E



[1] Insert can be rotated 90°

MSSD-E-M12



[1] Insert can be rotated 90°

| Type | B1 | D1 ∅ | D2 | D3 | H1 | L1 | ⌀ 1 |
|------------|------|---------|----------|----|------|------|-----|
| MSSD-E | 15.5 | 14 | Pg7 | M3 | 24.5 | 25 | – |
| MSSD-E-M12 | 15.5 | 15 | M12x 1.5 | M3 | 33 | 25.5 | 13 |

Ordering data

| Description | Cable connection | Cable diameter [mm] | Weight [g] | Part no. | Type |
|---|------------------|------------------------|---------------|---------------|-------------------|
| Socket, plug pattern type C, to industry standard, 9.4 mm, 3-pin, angled | Screw terminal | 6 ... 8 | 8 | 14098 | MSSD-E |
| | | 4 ... 6 | 11 | 539711 | MSSD-E-M12 |

Datasheet

Plug socket MSSD-ZBZC

- For valves with ZB and ZC solenoid coils



General technical data

Electrical connection 1

| | |
|-----------------------|--|
| Connection type | Socket |
| Cable outlet | Angled |
| Mounting position | Any |
| Design | Square |
| Connection technology | Plug pattern ZB/ZC |
| Number of pins/wires | 4 |
| Type of mounting | On solenoid valve via self-tapping screw |

Electrical connection 2

| | |
|--|-----------------------------------|
| Connection technology | Insulation displacement connector |
| Nominal conductor cross section [mm ²] | 0.22 ... 0.34 |

Technical data – Electrics

| | |
|----------------------------------|----------|
| Nominal operating voltage [V DC] | 24 |
| Operating voltage range [V DC] | 3 ... 36 |

Materials

| | |
|-------------------|----------------|
| Housing | PA |
| Note on materials | RoHS-compliant |

Operating and environmental conditions

| | |
|--|------------------|
| Ambient temperature [°C] | -10 ... +50 |
| Corrosion resistance class CRC ¹⁾ | 1 |
| Degree of protection | IP50 |
| Note on degree of protection | In mounted state |
| Maritime classification ²⁾ | See certificate |

1) Corrosion resistance class CRC 1 to Festo standard FN 940070

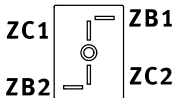
Low corrosion stress. Dry internal application or transport and storage protection. Also applies to parts behind covers, in the non-visible interior area, or parts that are covered in the application (e.g. drive trunnions).

2) Additional information: www.festo.com/catalogue/... → Support/Downloads.

Datasheet

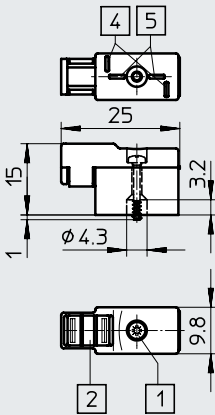
Dimensions

Pin allocation



Download CAD data → www.festo.com

MSSD-ZBZC



- [1] Retaining screw
- [2] Inscription label IBS-6x10
- [4] Plug pattern for ZB solenoid coil
- [5] Plug pattern for ZC solenoid coil

Ordering data

| Description | Cable connection | Nominal conductor cross section [mm ²] | Weight [g] | Part no. | Type |
|---|-----------------------------------|--|------------|---------------|------------------|
| Socket, connection pattern ZB/ZC, 4-pin, angled | Insulation displacement connector | 0.22 ... 0.34 | 11 | 185521 | MSSD-ZBZC |