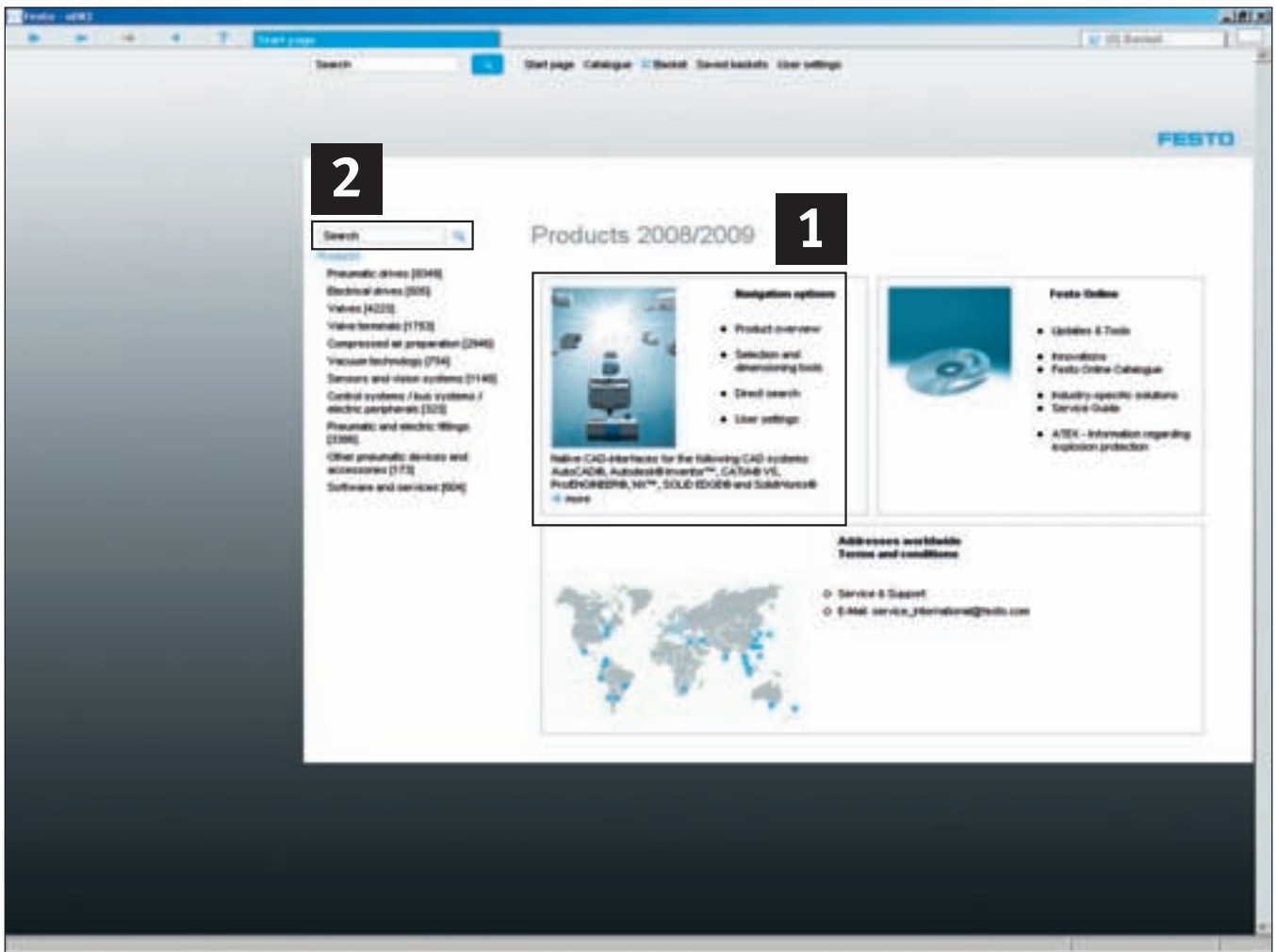


**The world of automation**  
**Digital catalogue version on DVD**

**FESTO**





## Online or Offline – Internet or DVD

Festo products and services provide impulses for greater productivity in industrial automation.

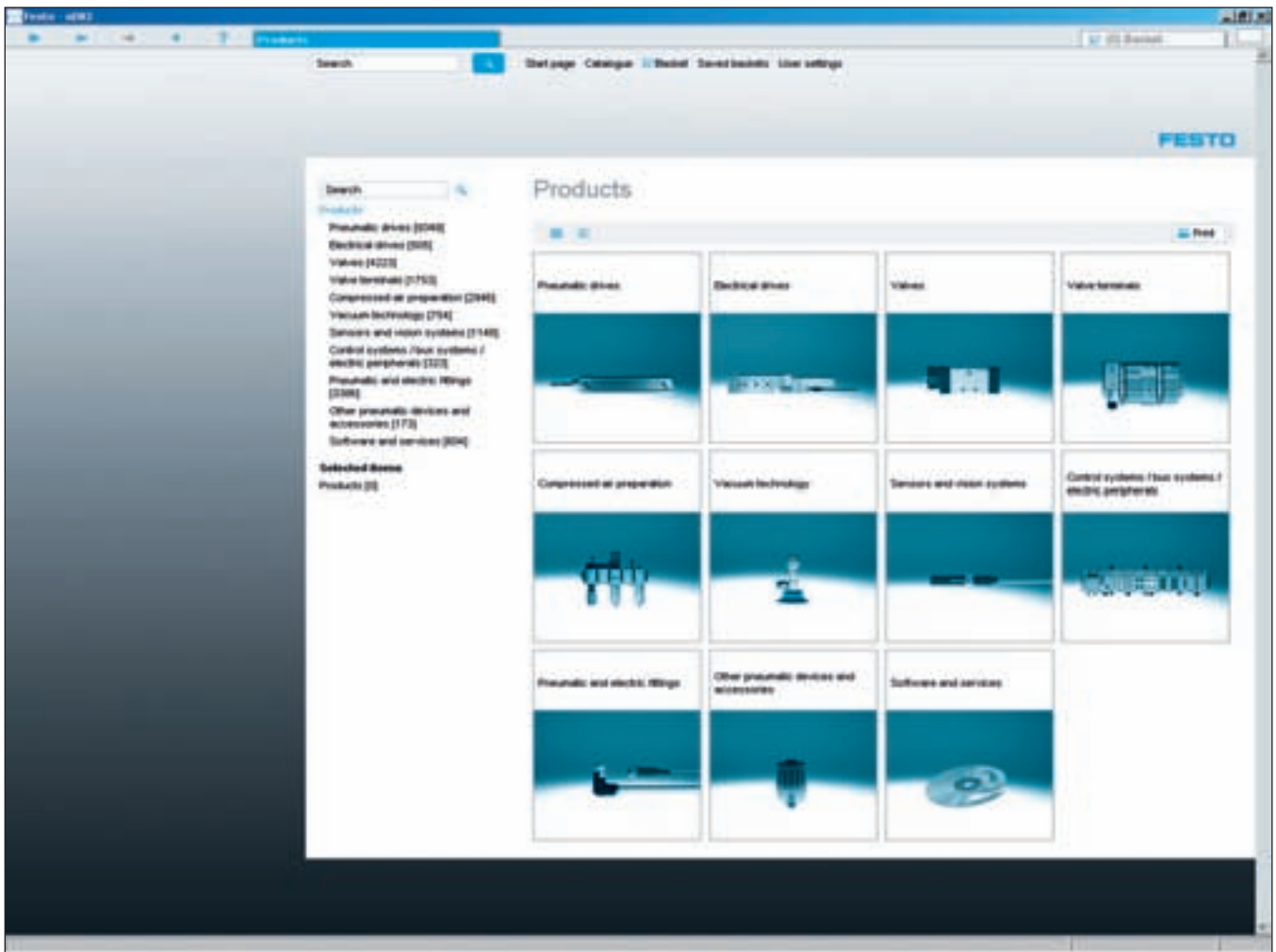
Define your optimal solution from over 21,000 products in thousands of variants. With only a few mouse-clicks offline on DVD, in the web catalogue on the internet or Online Shop (when available).

Our user-friendly digital catalogue and Online Shops are open 24 hours.

**Check for yourself!**

### Your advantages in the Online Shop

- Secure access
- Quickly find best suited products for your application with always up to date CAD models
- As registered user you have access to your personal settings and can save order baskets with your individual prices and order confirmations
- 24 h order tracking



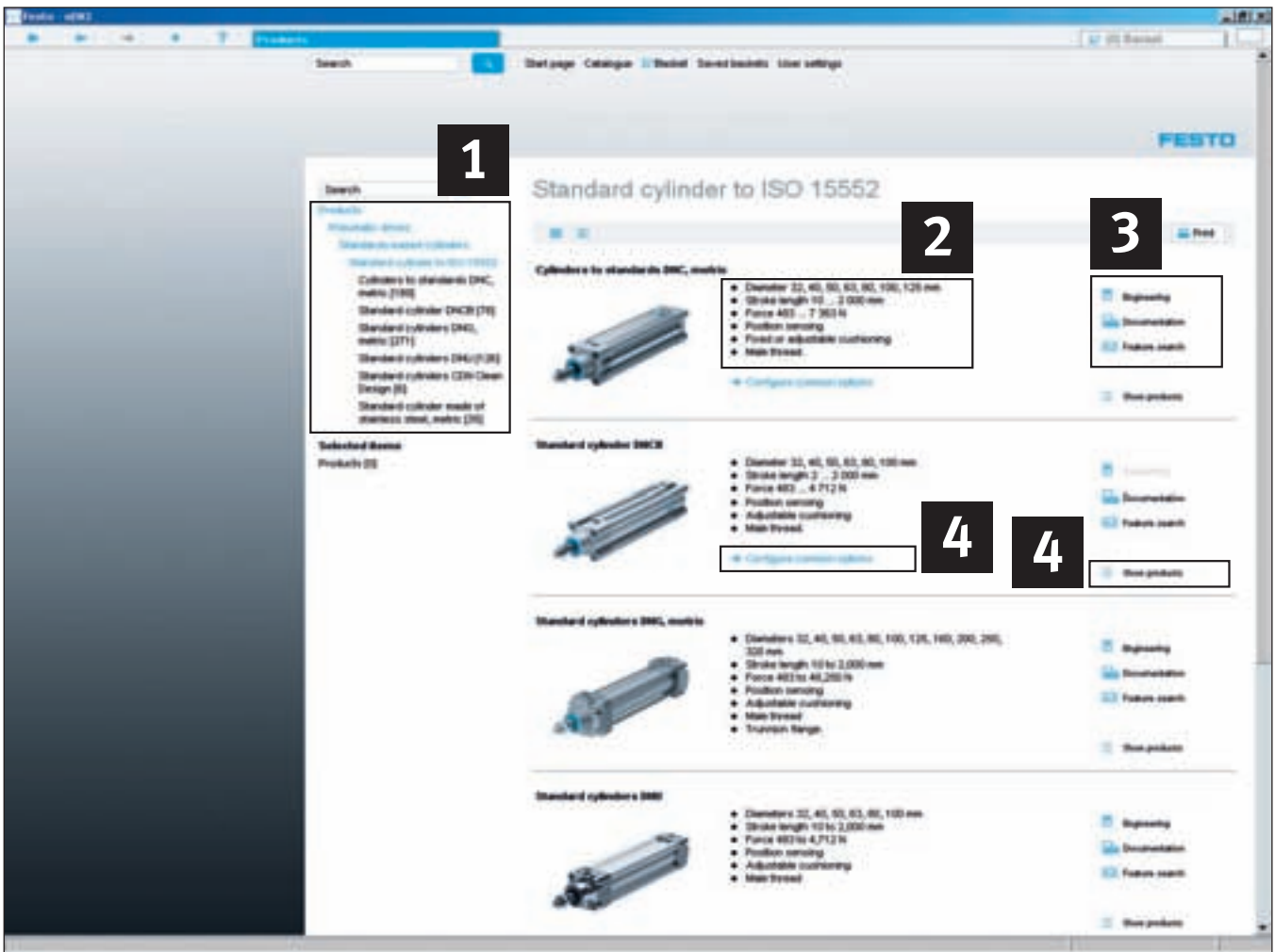
## Quickly find optimal solutions – digital product catalogue on DVD

Work offline with our convenient digital product catalogue on DVD, or use the always up-to-date information available in the internet.

Visit us at [www.festo.com](http://www.festo.com)

**Quicker searches and results**  
**Three convenient product search options are available:**

- 1** Image and text selection:  
Simply click “Product overview” in the “Navigation options” section
- 2** Full-text search

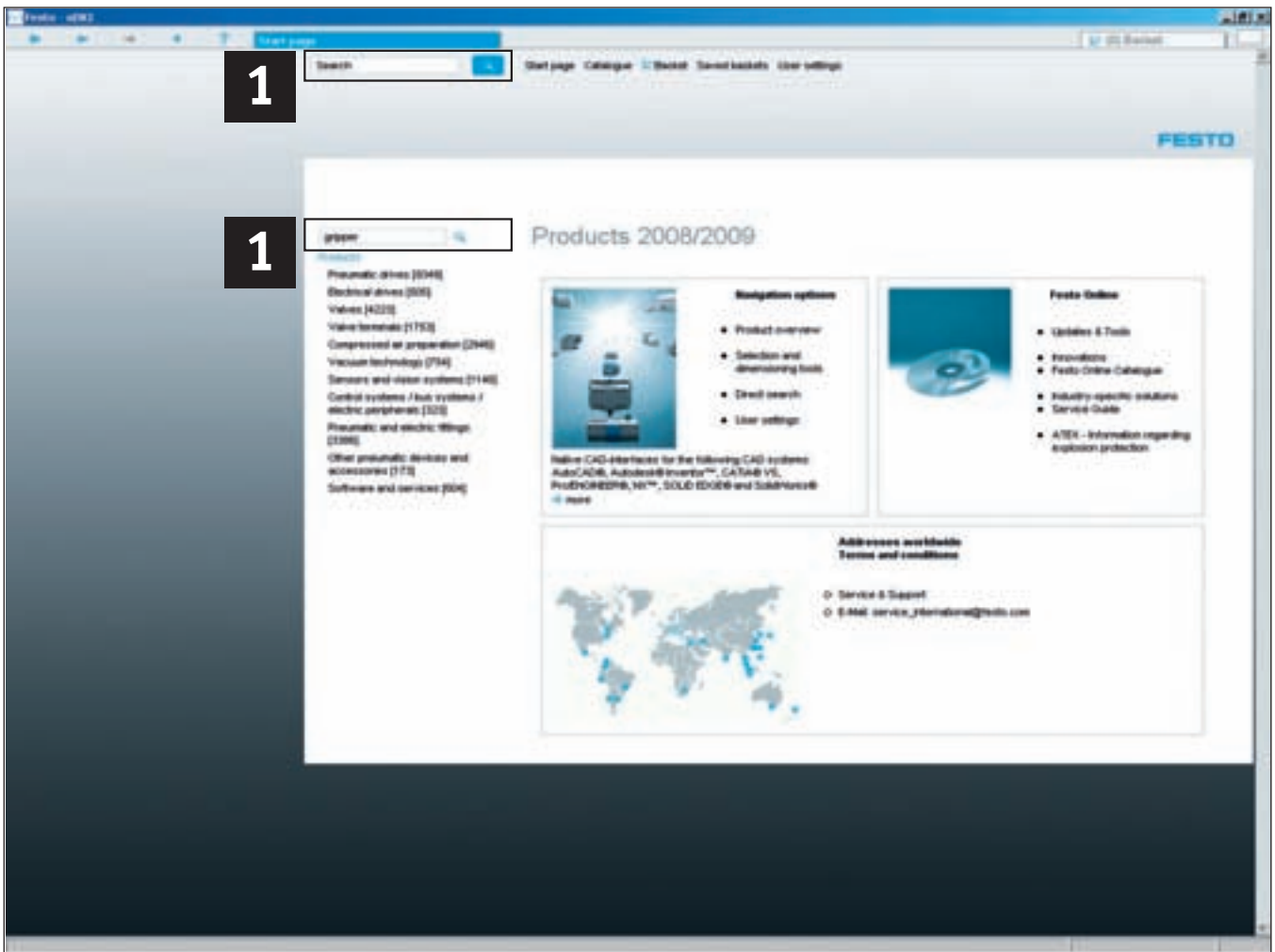


## 1. Navigation options – Product overview: From product family to product


Click through the product tree or product images from product family to product family **1** and find the best solution in our comprehensive range of products. An overview of the characteristic features is available for every product family **2**.

You can access detailed product information and selection through the convenient product configuration tool (where available) or the “Show product” button **4**.

The buttons **3** ...  
 ... start the associated engineering software for selection and/or calculation, when available  
 ... provide access to the detailed documentation as in the paper catalogue  
 ... enable feature search within the product family



## 2. Full-text search

For efficient full-text search go to the search field "Find"  and enter your search terms consisting of words, parts of words, part numbers or type codes.

### Examples:

Search for exact matches

- 7802
- 163306
- DNC-32-100-PPV-A

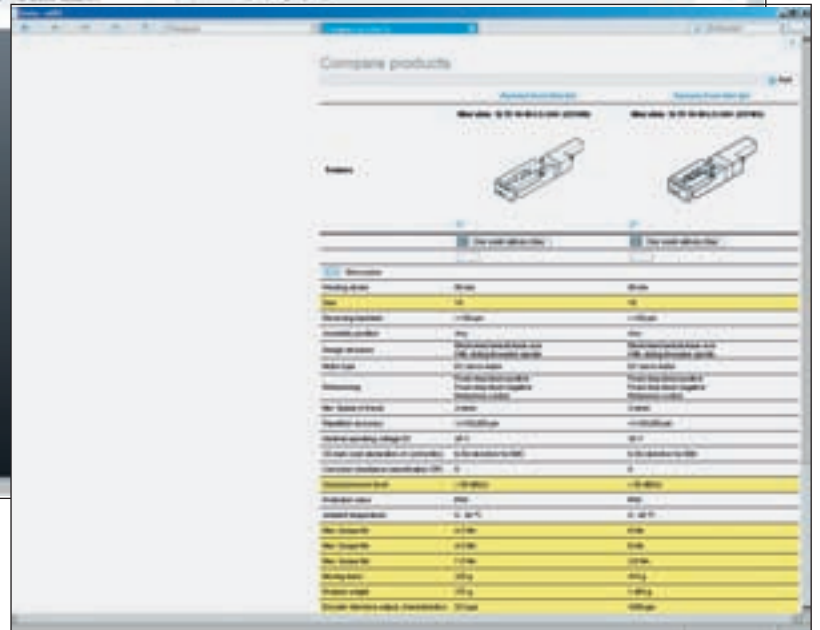
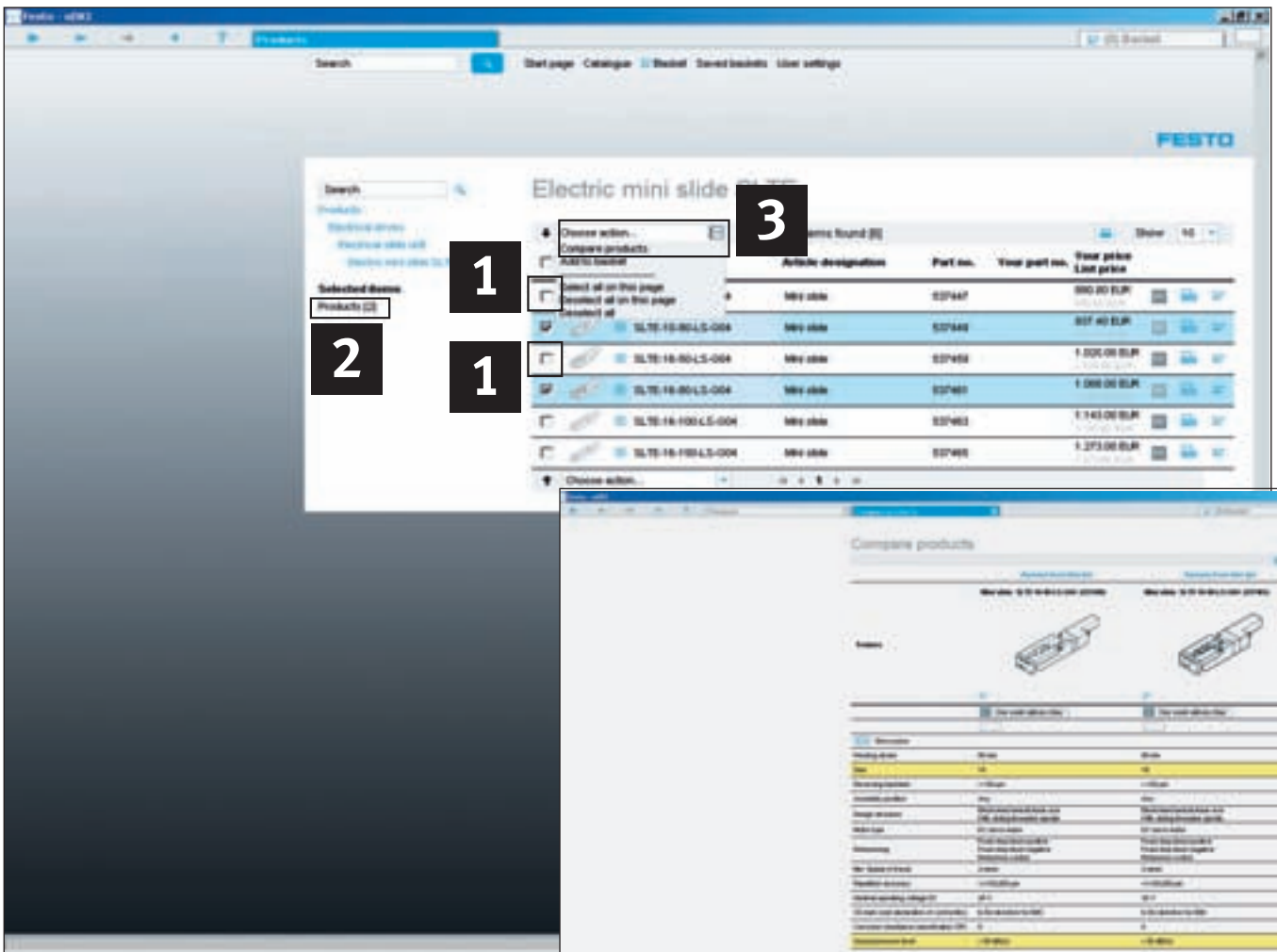
Search for words or parts of words

- gripper → slot gripper
- standar cylind → standard cylinder

Search with wildcards such as \* or? (Please note this is only possible with part numbers or type codes.)

- DNC-32-\*A
- \*603
- 182?0
- DNC KP

The intelligent full-text search delivers a list of the most probable matches of your search.



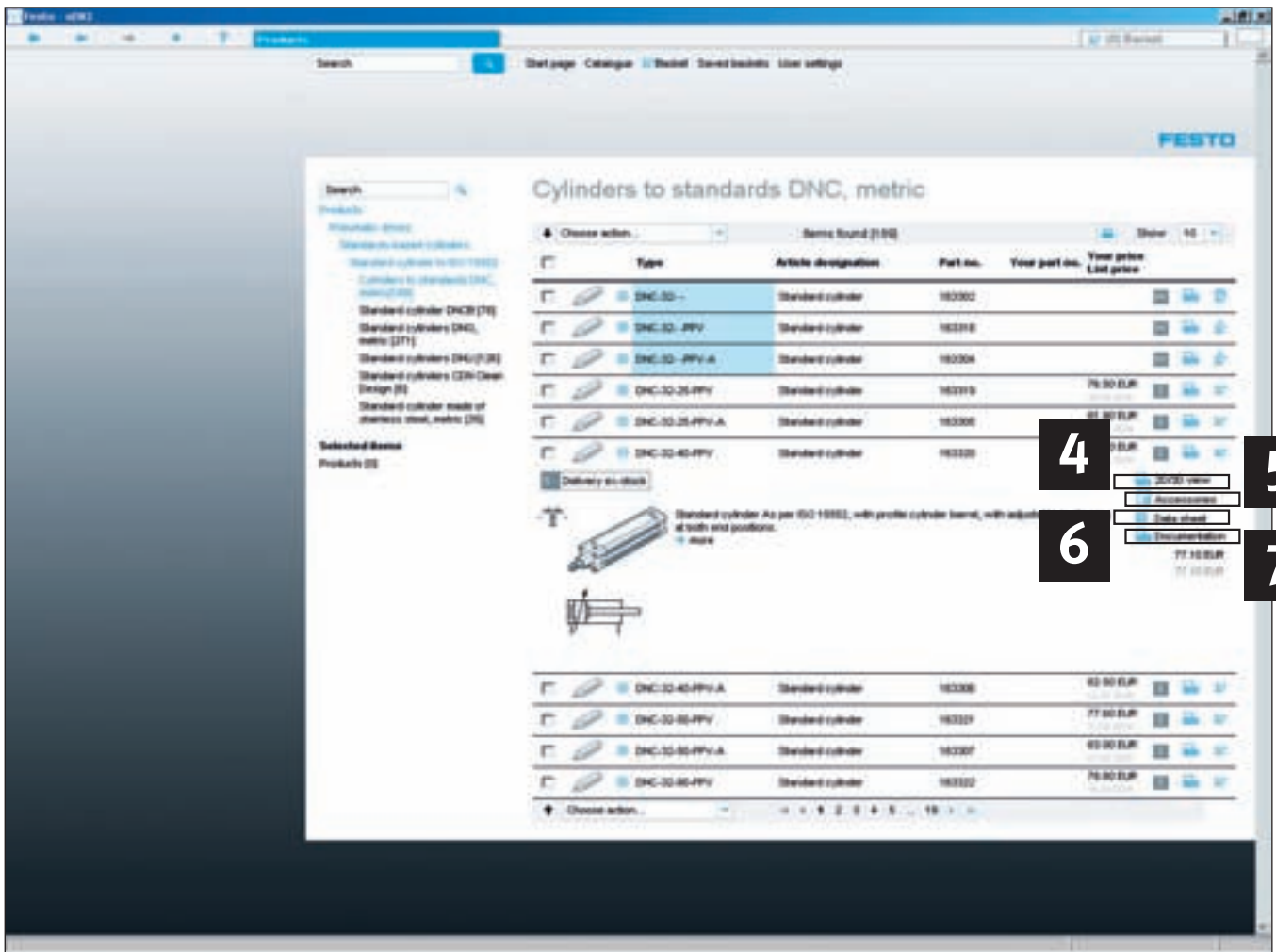
## Detailed product comparison

The function “Compare products” under pull-down menu “Choose action” **1** enables to compare any product of your choice with all others on data sheets. The differences between products in your comparison are highlighted in colour, price differences as well if available.

**Product differences at a glance**  
Select the products you wish to compare by clicking the checkbox in front of the product **2**. The selected products are then highlighted blue and are simultaneously added to the list. Clicking “Compare products” highlights the differing characteristics of two or more products, making them visible at a glance.

**Comparing products from different product families**  
If you wish to compare products from different product families, simply click the checkbox for the items you are interested in. All the selected items will be added to the list under “Selected items” **3** and are then compared. From the “Compare products” list you can then directly add items to the order basket.

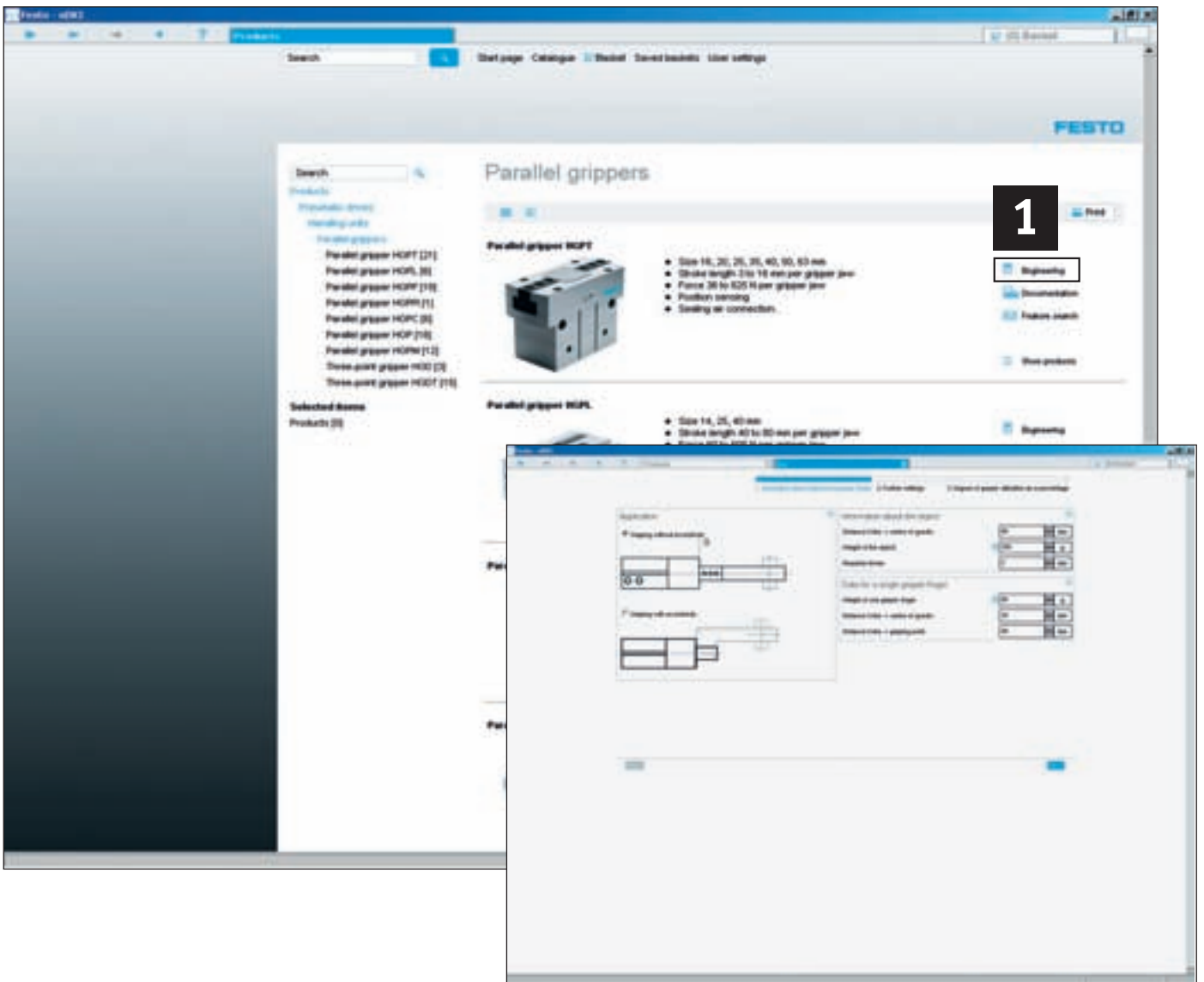




## Detailed information at a glance

A large amount of additional information is available at the click of a button:

- 4** CAD data: 2D/3D CAD models in diverse formats. Our internet catalogue guaranties the most up-to-date information
- 5** Accessories: Suitable and efficient accessories for the selected products
- 6** Product data sheets: Detailed data sheets containing all of the relevant technical data, also printable
- 7** Documentation: PDFs with extensive documentation from the paper catalogue, exploded view drawings and product animations (when available)



## Selection and dimensioning tools

Design the selected products quickly and without errors **1**.

### Dimensioning pneumatic drives

Perfect simulations replace expensive practical test runs! This user-friendly expert system assists you with the optimal selection and configuration of a complete pneumatic drive system. Select, calculate, simulate and optimize: ready for use!

### Gripper selection

Weight, movement direction, spacing, etc. are the parameters of your application, this tool defines

the correct parallel, radial, angle-angle, or 3-point grippers which corresponds best with your requirements.

### Feed separator selection

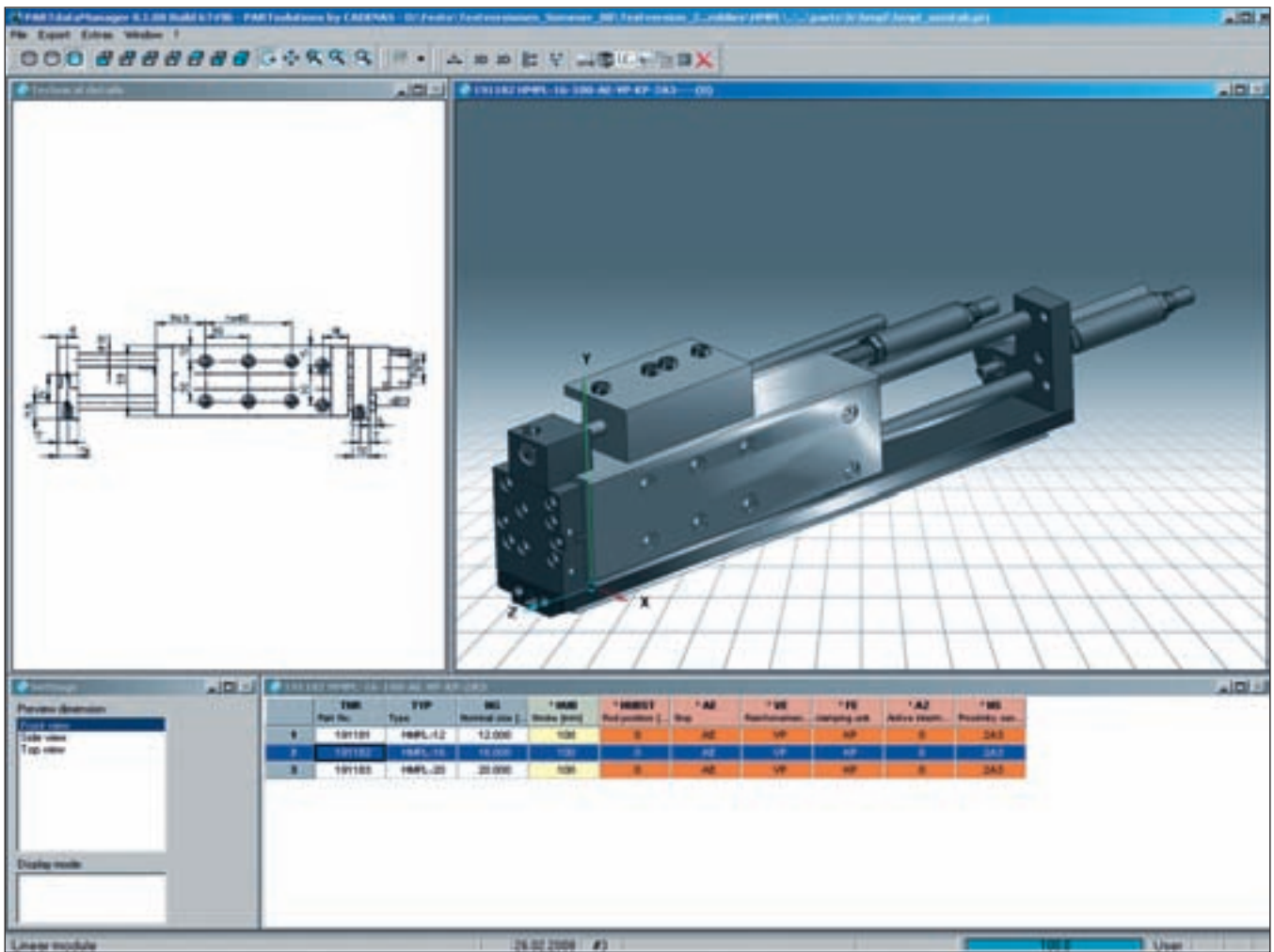
Ensures order in the feeding process! This tool supports the correct select of the feed separator for your application.

### Shock absorber selection


Diagonal, vertical, rounded or straight movements, lever or disk all cases of subdued movements are taken into consideration. This tool always suggests the most suitable shock absorber.

Further engineering tools such as valve terminal preselection, vacuum preselection, tubing selection, calculation of moment of inertia or dimensioning of positioning drives can be found in the section "Selection and dimensioning tools" on the start page or on the internet under [www.festo.com](http://www.festo.com).

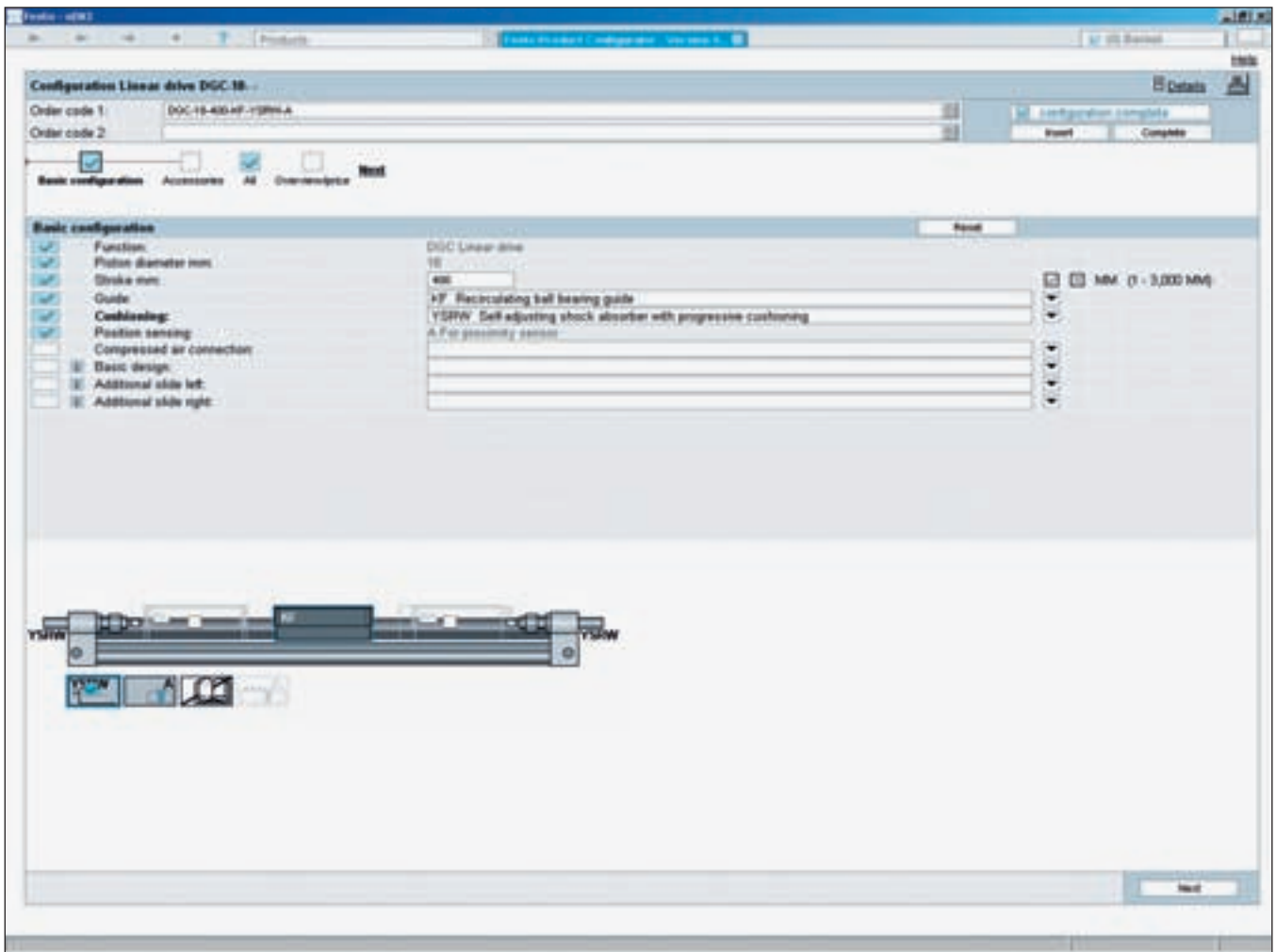




## CAD models

Clicking the “Circle”  button in the product list under “details...” opens a window with a CAD preview of the product in 2D and 3D. Using the export function you can export the file in the desired format to your CAD system.

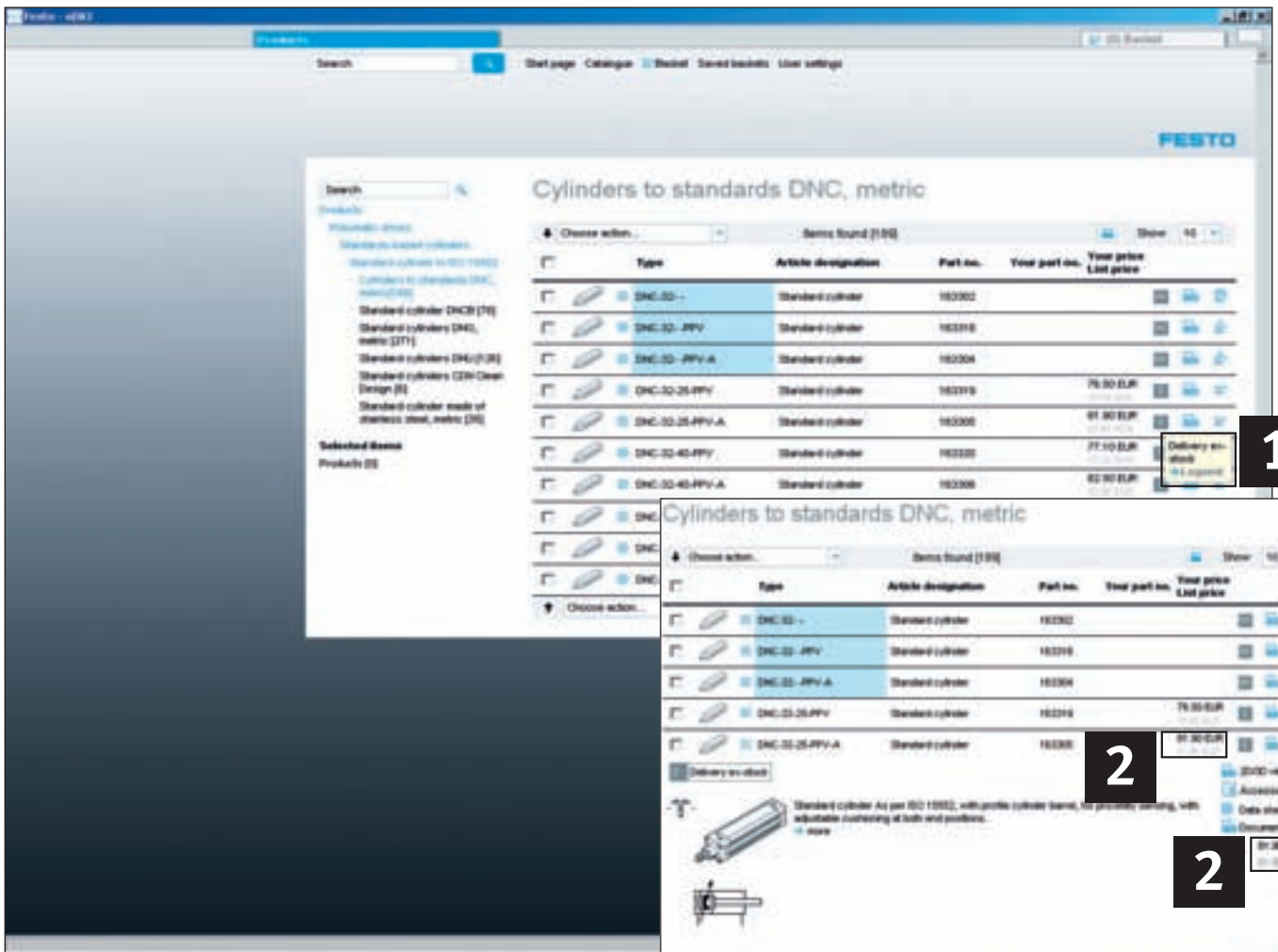
The always newest CAD models in 45 different formats are available for download online at [www.festo.com](http://www.festo.com).



## Configuring products quickly and reliably

In order to configure a product select “Configure common options” (when available) at product family level. Or simply click the “Configure” button in the order basket. In a subsequent windows you can then step by step determine all the product characteristics. Logic checks ensure that only correct configurations will be accepted.

Following the configuration procedure the basket provides you with information regarding pricing and delivery times, if available, for the selected variants.



## Delivery times and prices, when available

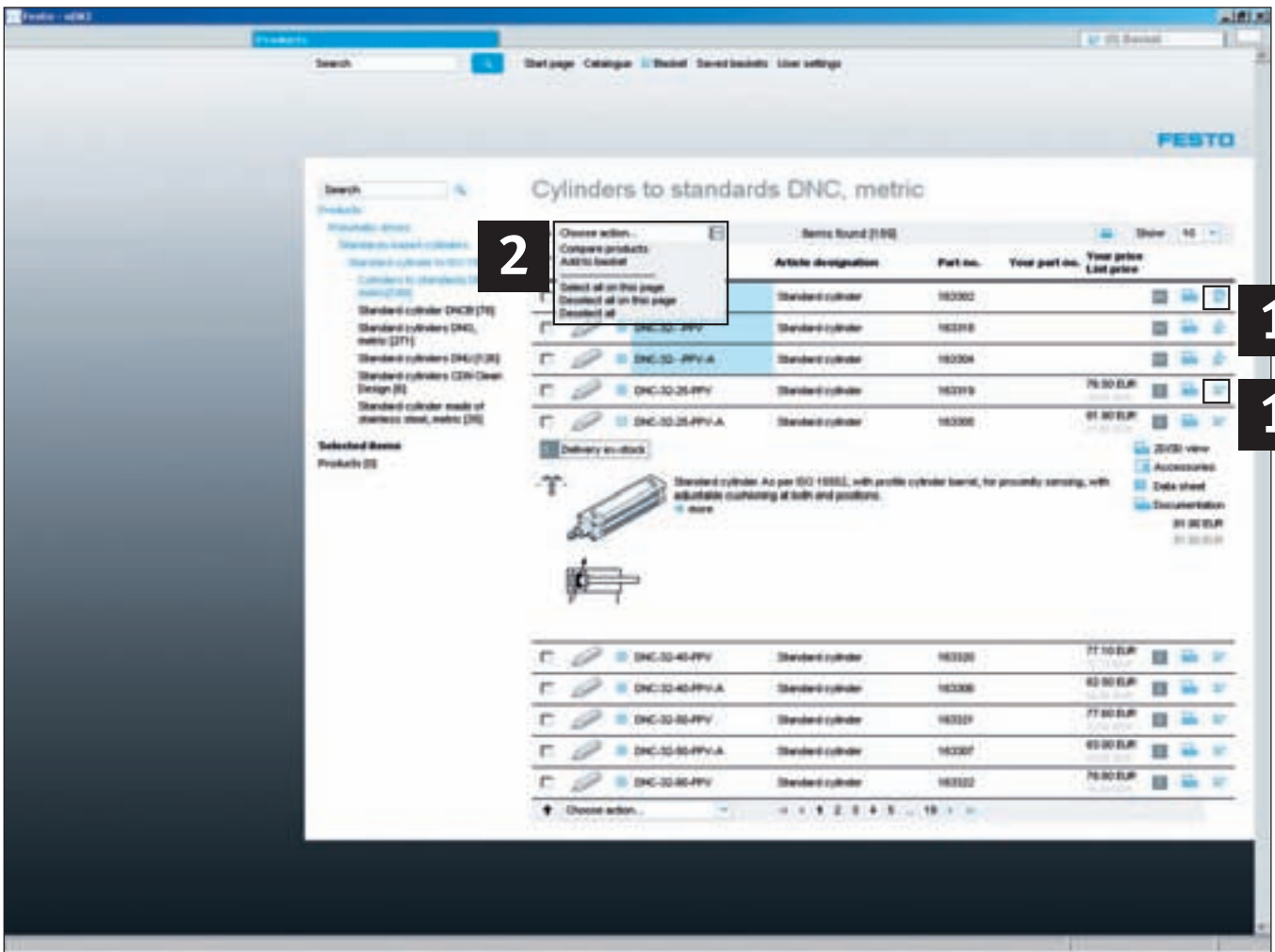
### 1 Delivery times

You can find the exact delivery time online! The standard delivery times shown in the catalogue are based on practical experience and do not always correspond to the actual delivery time. Unfortunately we cannot guarantee the specified standard delivery times. Failure to meet the specified standard delivery times in individual cases does not automatically constitute a delay in performance and does not entitle you to compensation of any kind.

### 2 Prices

You can find the prices in the detail view of the product, when available, and naturally in the order basket. Simply register online!

Please note we cannot offer a Online Shop in all countries!



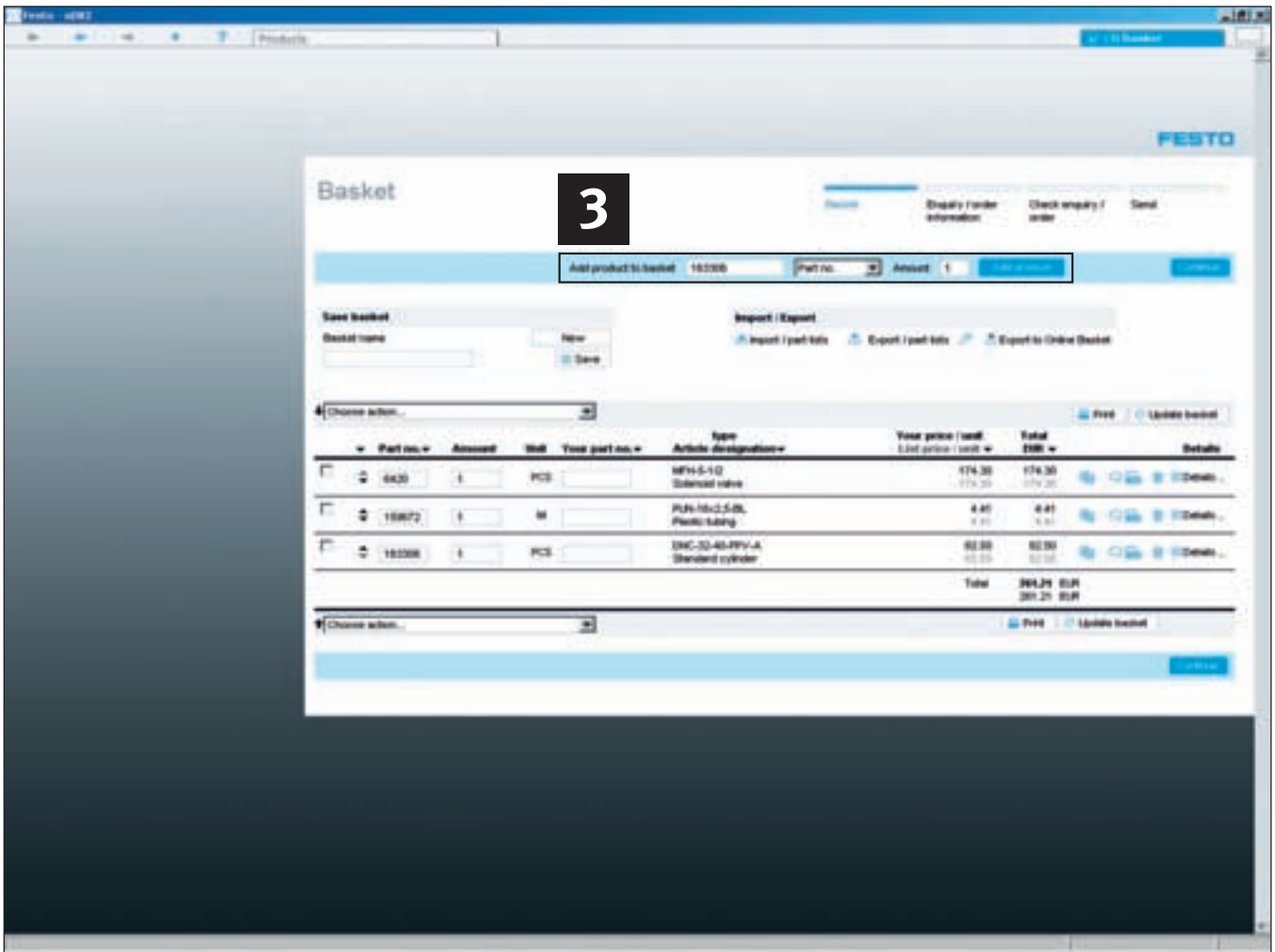
## Adding items to the basket

You have 2 options:

### 1 Use the basket symbol to add products one by one:

Clicking on the order basket symbol adds the product to the basket. A message informs you that the product has been successfully added.

**2 For adding more than one product to the basket:** Select products of your choice by clicking the tickbox and then use "Choose action" "Add to basket" function from the pulldown menu. All selected products will go to the order basket.



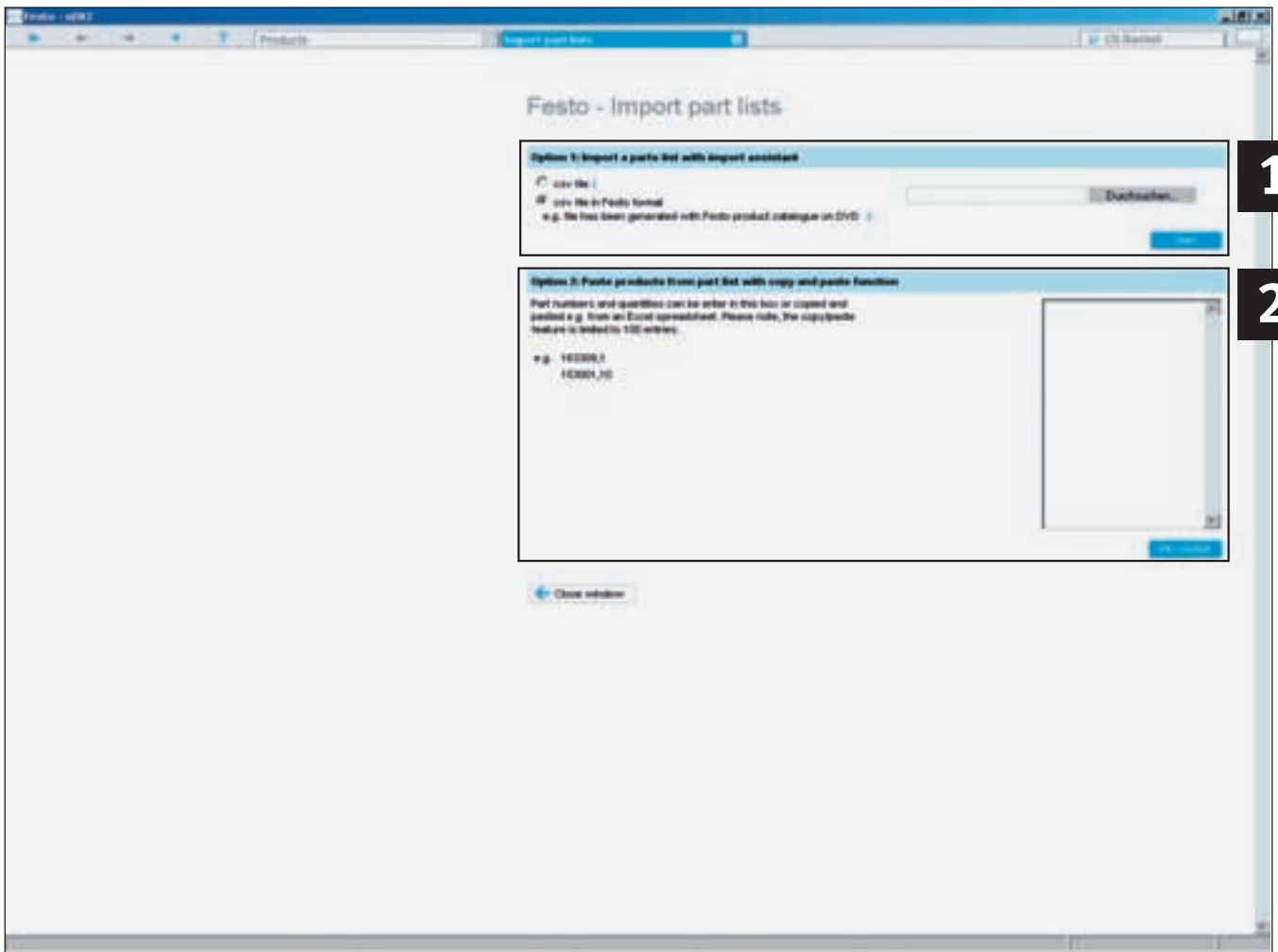
## Adding products to the basket using quick order

### Adding products directly to the order basket

The box in the upper right-hand corner allows you to directly add products to the basket by entering part number or type codes or (when available) your own part number.

Enter the part number and “Amount” then click “Add product”. The product is now in the basket. The prices (when available) are shown in the order list of the basket.

This box **3** allows you to enter part number, type code or your own part number.



## Import, copy/paste parts lists

To import existing parts lists proceed as follows:

### **1** Importing previously existing part lists, for example in csv format

In the upper area you can select the existing list you wish to import in csv format. Selecting “csv file” starts the import assistant which accompanies you step by step through the process.

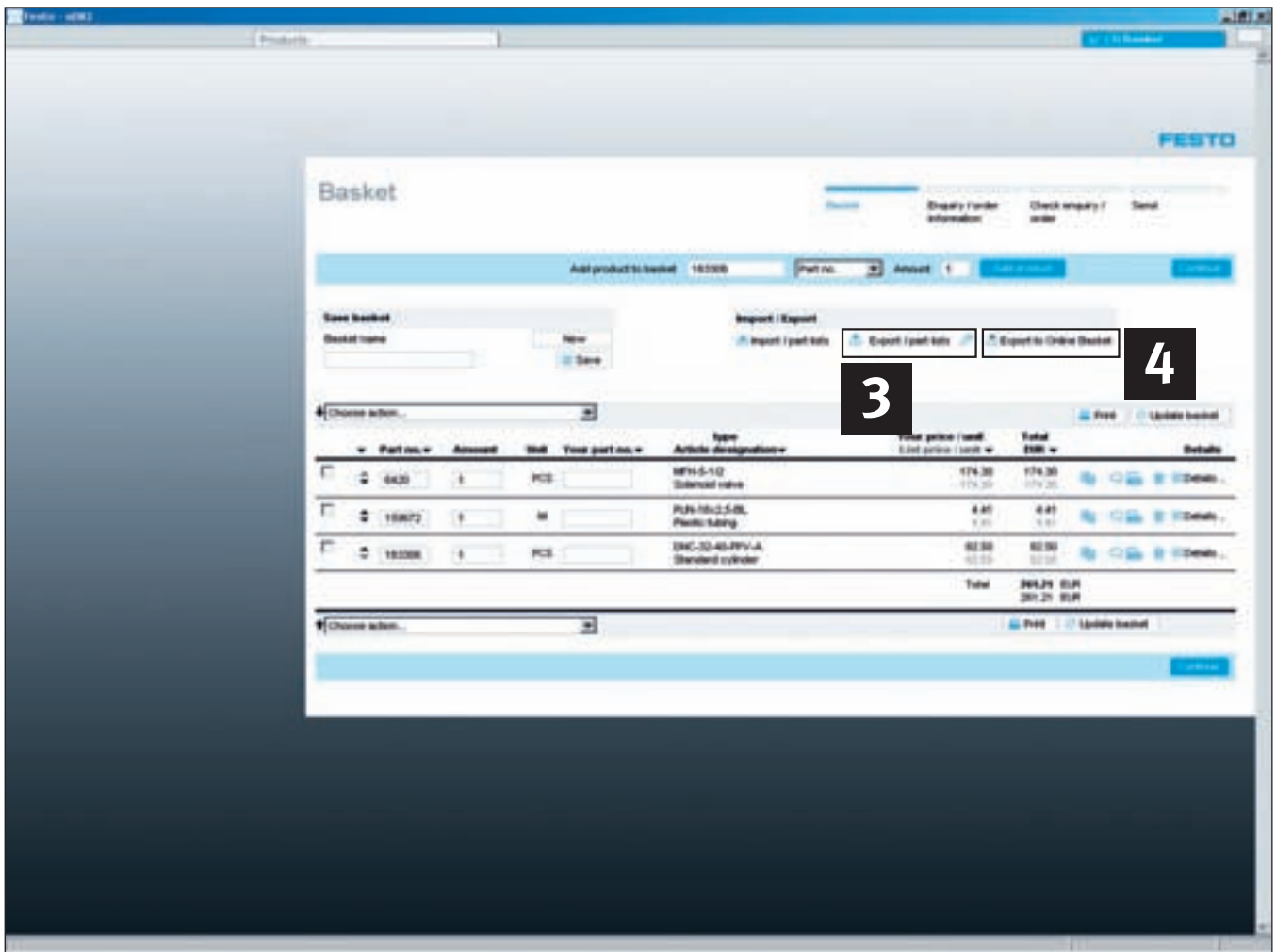
### **2** Copy/paste previously existing part lists in Excel or text format

You can fill the order basket using existing parts lists (e.g. in Excel or text format) by simply copying from your list and pasting to the empty field under “Option 2”.

#### **Maximum number of products**

Please note that the system only allows a maximum of 100 different items to be imported at a single time!





## Order basket – management & ordering

### Export basket

#### 1. As csv file

You can export a previously compiled list/basket as a csv file with a single click. In order to do so click “Export/part list” and then “Save” in the subsequently window and enter the desired location, where to save file. The csv file can then be opened and modified by using, for example, Microsoft Excel.

#### 2. Your preferred format

You can easily adapt the export format to your requirements. Click “Settings” and select which information should be exported.

### Managing the shopping basket

#### 1. Searching for saved baskets/part lists

You can conveniently search for saved shopping baskets using a diverse range of criteria:  
**3** shopping basket name, creator and/or creation date.

#### 2. Upload order baskets directly to the Online Shop and place your order

To upload order baskets directly from the offline version to the Online Shop click “Export to online basket”. An Internet connection is created and the product list is transferred. After “Login” you will have your net prices and delivery times and are ready order.

#### 3. Sending the offline shopping basket to Festo

To send the shopping basket simply make a print out and send it to Festo via fax or e-mail.

## FAQs and installation requirements

**Q: How to find products quickly and simply?**

**A:** There are several different search procedures:

- 1) The product overview for searching through product types with the product tree search or the image selection. For more detailed information see pages 3 to 5.
- 2) Full-text search similar to an Internet search-machine. Simply enter a term, type code, part number or parts thereof and find results. For more detailed information please see page 5.
- 3) Advanced search: Determine the type of search and optimize the full-text search to meet your requirements. For more detailed information please see page 5.
- 4) Within the product tree and image selection you also have the additional option of selecting characteristics. Here the search results can be limited using characteristics from the data sheet.

**Q: What to do if I prefer a different browser?**

**A:** The Festo product catalogue is a client-server application which normally functions on a browser and server supplied with the DVD. Should you prefer a different browser, Microsoft Internet Explorer, Firefox or Netscape can also be used. For more detailed information see the chapter "Installation requirements". Please note the internet browser "Opera" is currently not supported.

**Q: Where can to find 2D dimensional drawings in the new digital catalogue?**

**A:** The 2D drawings are derived from the 3D volume models. This means that you must first generate the 3D model of the desired product using the circle button or the 2D/3D CAD button. Using the 2D function a scale drawing with 6 elevations can then be derived and exported.


**Q: How to switch the user interface language of the digital catalogue?**

**A:** Go to "User Settings" from the menu on your right, select from the available language/country combination the most suited and click "Save".

**Q: Where to find CAD files of Festo products?**

**A:** You can find CAD models for products in all of the common neutral formats in the Festo product catalogue on DVD-ROM. The catalogue in the internet provides you with always up-to-date CAD files of most products in more than 45 formats. The data is available free of charge at <http://www.festo.com>. Simply log in as a registered user and you are ready to go.

**Q: How to position the piston rod or movable parts in the 3D CAD model?**

**A:** You need to change the values for the piston rod or for moving parts in general in order to position them. This is done through the menu under Extras\Set value range . Double-click on the component in the window which opens and enter the new position in the value field.

**Q: Can customer-specific material numbers be included in the catalogue?**

**A:** Yes. Customer-specific material numbers can easily be entered in the shopping basket in the column "Your part number".

**Q: Will my installed version of FluidDRAW® run with the new catalogue?**

**A:** When installing the catalogue you are offered the option of updating FluidDRAW®. This update is recommended. See also <http://www.fluiddraw.com>

**Q: Are there updates for the digital product catalogue of Festo?**

**A:** Download updates for the digital catalogue on DVD from <http://www.festo.com>. This update is recommended.

**Q: Is it possible to start the direct search and/or the order basket when opening the application?**

**A:** Yes. Using these parameters you can start the direct search and/or order basket when initially starting the digital catalogue.

- /QD Start page, direct search
- /QS Start page, basket
- /QDS Start page, direct search, basket
- /QSD Start page, basket, direct search

# Installation requirements

## Recommended configuration

- PC not older than 4 years
- Laptop not older than 2 years
- Pentium IV, 2.4 GHz+ or AMD 2400 xp+
- 1 GB RAM
- DVD-ROM drive
- Screen with 1280 x 1024 pixels
- Windows XP SP2 or Vista
- 2.5 GB free drive space for complete installation to the hard drive
- Microsoft Internet Explorer 7.0
- Adobe Acrobat Reader 7.0

After inserting the DVD the setup program is initiated automatically. If not, it can be started manually by double-clicking on the file SETUP.EXE. Please follow the instructions shown on-screen.

## Updating from a previous version:

This setup program uninstalls the previous version and automatically installs the new version. Your personal data (parts lists/order baskets) remain and are saved.

Note: Administration rights are necessary for the installation under Windows Vista. However, no administration rights are needed for the installation under Windows 2000 or XP.

In case of a local firewall you need to enable the TCP/IP ports 27019 and 27020.

## The Festo product catalogue (xDKI) is a client-server application

### Displaying the product catalogue

The display module (xDKIBrowser) delivered with the package is used by default to display the catalogue. However, as an alternative any Java Script-compatible browser (e.g. Internet Explorer, Mozilla Firefox, etc.) can be used.

### Starting alternative browsers, command line options

Use the start parameters of the xDKIServer.exe to define the following settings:

- a) Port and TCP/IP settings - Parameters /T and /P/T:-1 TCP/IP free mode (especially for errors with firewall software or IIS), only functions with the xDKIBrowser «Default»  
/T:1 TCP/IP mode for operating with any desired browser  
/P:0 xDKIServer independently searches for any free port  
/P:123 xDKIServer always uses Port 123 (optional)
- b) Alternative browsers - Parameter /B  
/B:0 Ask from browser  
/B:1 xDKIBrowser «Default»  
/B:2 Internet Explorer  
/B:3 Firefox  
/B:4 Netscape  
/B:5 Netscape6
- c) Automatically shut down server  
/W:-1 Server not shut down when xDKIBrowser is closed  
/W:1 Server shut down when xDKIBrowser is closed «Default»
- d) Further functions  
/QS also starts WebShop (default)  
/QD also starts direct search  
/QSD also starts WebShop and direct search  
/QDS also starts direct search und WebShop  
/QQ only startpage

### Examples

- xDKIServer.Exe /T:-1 /P:0 /W:1  
No TCP/IP, port selected automatically, shut down server automatically «Default»
- xDKIServer.Exe /T:1 /P:16000 /W:1  
TCP/IP, port 16000, shut down server automatically

## Installing the digital catalogue in the network

**The digital product catalogue is suitable for all common networks.**

### **For administrators**

If an older version of the Festo catalogue is already installed on the network, first delete this from the server. In addition, the minimal installation program, which is later run on the client PC, also deletes any locally saved files and configurations from older catalogue versions. Please define a network hard drive and copy the entire contents of the DVD-ROM to a separate, empty folder. In order to prevent delays and lag while using the program a network with sufficient bandwidth is required (recommended: 100MBit/s minimum).

### **For users**

A minimum installation of the Festo product catalogue must be carried out on every client PC. Every client PC requires read privileges for the server folder containing the Festo catalogue.

To install the catalogue please use Windows-Explorer to open the catalogue folder defined on the server and run the SETUP.EXE program by double-clicking the file. Perform the minimal installation. This will only create the links in the start menu. All of the data and the programs are stored on the server and are run from there. Neither disk space nor privileges are required.



## On the Internet: The Festo Online Shop – Up-to-date alternative to the DVD

Quickly and simply select products in the Online Shop at [www.festo.com](http://www.festo.com), download the most up-to-date CAD models, effectively place and securely process orders 24-hours a day.

### Quite simple

Access the Online Shop at any time with your personal password and place orders in a single process quickly and electronically. Purchase over 21,000 products faster, more conveniently over the internet, with the highest degree of transparency and security.

Please go to [www.festo.com](http://www.festo.com), select your country and then click "Industrial Automation".

### Up-to-date information

The Online Shop provides up-to-date information about the products, prices, conditions and availability, using full-text search, or directly entering type codes/part numbers.

Convince yourself of the advantages of the Online Shop at [www.festo.com/tour\\_shop\\_en](http://www.festo.com/tour_shop_en)

### The overview

Using order tracking you can query the status of all of your orders online - even fax or telephone orders! The location of your order is also monitored after dispatch.

### Minimize time and effort...

...thanks to the import function of part lists and the save function of order basket. Creating new or identical following orders, supplementing orders or modifying a subsequent order basket becomes very easy.





#### **Login (when available)**

- go [www.festo.com](http://www.festo.com), select country, click “Industrial automation” button
- Login with user name and password
- Select products from catalogue or use expanded range of functions from the “Online Shop” menu

An encrypted Internet connection prevents unauthorized access to your data.

#### **Product information**

- Search for products by images, characteristics, part numbers, types for free text
- Access or save product descriptions, technical data, product images, line drawings, accessories or wiring diagrams
- Download 2D or 3D CAD models in over 80 formats or catalogue pages in original layout
- Configure products online
- Request pricing and availability information

#### **Ordering**

- Compile items in shopping basket and save. Re-use for the next (similar) order or modify
- If a list of part numbers is available, import or simply copy and paste
- When all products are in the basket, click “Continue” The system guides you clearly through the ordering process
- Choose whether the order confirmation should be sent by fax or e-mail
- Submit order: Confirmation of the order appears immediately, including the tracking number and can be printed using a browser function

#### **Order tracking**

- Select the “Order Tracking” function. All of your orders, including online orders, as well as fax and telephone orders are documented
- Generate a selection list using order number, part number or range of dates. You can see the status of all of your orders at a glance
- An additional click on a particular order displays the details
- Following dispatch: Track the parcel service with a click of a button. It is always clear where your package is located at any give moment



## Products and services – everything from a single source

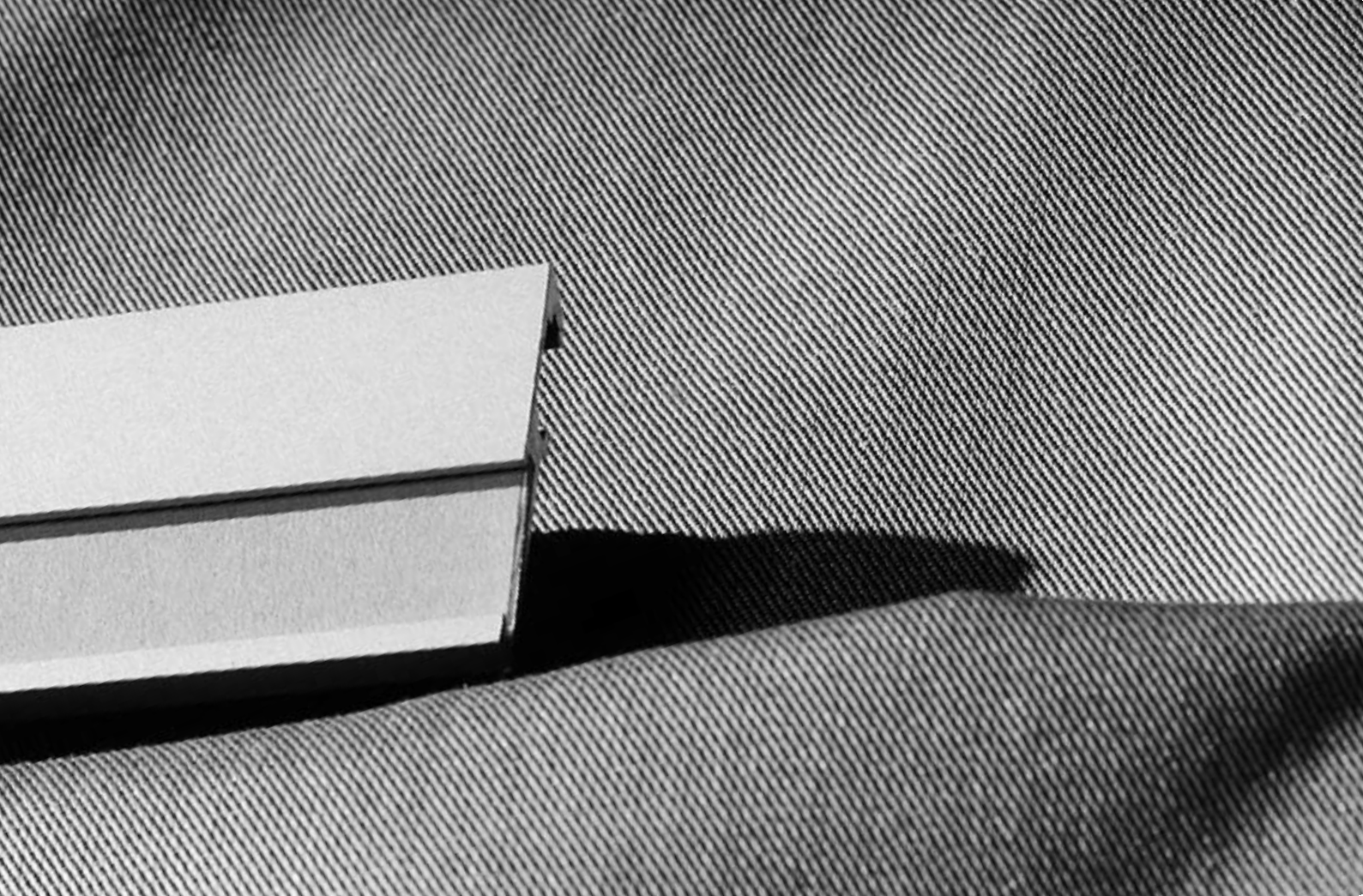
Where technological enthusiasm and efficiency merge, products incorporating new ideas evolve. Where the customer is the main point of focus, tailor made services evolve.

**Engineering – for greater speed in the development process**

- CAD models
- Engineering tools
- Digital catalogue
- FluidDRAW®
- More than 1,000 technical consultants and project engineers worldwide
- Technical hotlines







**Supply chain – for greater speed in the procurement process**

- E-commerce and online shop
- Online order tracking
- Euro special manufacturing service
- Logistics optimisation

**Assembly – for greater speed in the assembly/commissioning process**

- Prepack
- Preassembly
- Turnkey pneumatics
- Handling solutions

**Operation – for greater speed in the operational process**

- Spare parts service
- Energy saving service
- Compressed air consumption analysis
- Compressed air quality analysis
- Customer service



## Festo worldwide

### Argentina

Festo S.A.  
Edison 2392  
(B1640 HRV) Martinez  
Prov. de Buenos Aires  
Tel. ++54 (0)11/47 17 82 00, Fax 47 17 82 82  
E-mail: info\_ar@festocom

### Australia

Festo Pty. Ltd.  
Head Office (Melbourne)  
179-187 Browns Road, P.O. Box 261  
Noble Park Vic. 3174  
Tel. ++61 (0)3/97 95 95 55, Fax 97 95 97 87  
E-mail: info\_au@festocom.au

### Austria

Festo Gesellschaft m.b.H.  
Linzer Straße 227  
1140 Wien  
Tel. ++43 (0)1/91 07 50, Fax 91 07 52 50  
E-mail: info\_at@festocom

### Belarus

IP Festo  
Minsk, 220035  
Mascherov Prospekt, 78  
Belarus  
Tel. ++375 (0)17/204 85 58, Fax 204 85 59  
E-mail: info\_by@festocom

### Belgium

Festo Belgium sa/nv  
Rue Colonel Bourg 101  
1030 Bruxelles/Brussel  
Tel. ++32 (0)2/702 32 11, Fax 726 90 11  
E-mail: info\_be@festocom

### Brazil

Festo Automação Ltda.  
Rua Guiseppe Crespi, 76  
KM 12,5 - Via Anchieta  
04183-080 Sao Paulo SP-Brazil  
Tel. ++55 (0)11/50 13 16 00, Fax 50 13 18 68  
E-mail: info\_br@festocom

### Bulgaria

Festo Bulgaria EOOD  
1592 Sofia  
9, Christophor Kolumb Blvd.  
Tel. ++359 (0)2/960 07 12, Fax 960 07 13  
E-mail: info\_bg@festocom

### Canada

Festo Inc.  
5300 Explorer Drive  
Mississauga, Ontario L4W 5G4  
Tel. ++1 (0)905/624 90 00, Fax 624 90 01  
E-mail: info\_ca@festocom

### Chile

Festo S.A.  
Mapocho 1901  
6500151 Santiago de Chile  
Tel. ++56 (0)2/690 28 00, Fax 695 75 90  
E-mail: cl0fcl@festocom

### China

Festo (China) Ltd.  
1156 Yunqiao Road  
Jinqiao Export Processing Zone  
Pudong,  
201206 Shanghai, PRC  
Tel. ++86 (0)21/58 54 90 01, Fax 58 54 03 00  
E-mail: info\_cn@festocom

### Colombia

Festo Ltda.  
Avenida El Dorado No. 98-43  
Bogotá  
Tel. ++57 (0)1/404 80 88, Fax 404 81 01  
E-mail: festo@festocom.co

### Croatia

Festo d.o.o.  
Nova Cesta 181  
10000 Zagreb  
Tel. ++385 (0)1/619 19 69, Fax 619 18 18  
E-mail: info\_hr@festocom

### Czech Republic

Festo, s.r.o.  
Modranska 543/76  
147 00 Praha 4  
Tel. ++420 261 09 96 11,  
Fax ++420 241 77 33 84  
E-mail: info\_cz@festocom

### Denmark

Festo A/S  
Islevdalvej 180  
2610 Rodovre  
Tel. ++45 70 21 10 90, Fax ++45 44 88 81 10  
E-mail: info\_dk@festocom

### Estonia

Festo OY AB Eesti Filiaal  
Laki 11B  
12915 Tallinn  
Tel. ++372 666 15 60, Fax ++372 666 15 61  
E-mail: info\_ee@festocom

### Finland

Festo OY  
Mäkituvantie 9, P.O. Box 86  
01511 Vantaa  
Tel. ++358 (09)/87 06 51, Fax 87 06 52 00  
E-mail: info\_fi@festocom

### France

Festo E.U.R.L.  
Head Office  
Numéro indigo Tel. 0820/204640, Fax 204641  
BP 25  
8,rue du clos Sainte-Catherine  
94363 Bry-Sur-Marne Cedex  
Tel. ++33 (0)1/48 82 64 00, Fax 48 82 64 01  
E-mail: info\_fr@festocom

### Germany

Festo AG & Co. KG  
Postfach  
73726 Esslingen  
Ruiter Straße 82  
73734 Esslingen-Berkheim  
Tel. ++49 (0)711/34 70, Fax 347 21 44  
E-mail: info\_de@festocom

### Greece

Festo Ltd.  
40 Hamosternas Ave.  
11853 Athens  
Tel. ++30 210/341 29 00, Fax 341 29 05  
E-mail: info\_gr@festocom

### Hong Kong

Festo Ltd.  
Unit C&D, 7/F, Leroy Plaza  
15 Cheung Shun Street  
Cheung Sha Wan, Kowloon  
Hong Kong  
Tel. ++852/27 43 83 79, Fax 27 86 21 73  
E-mail: info\_hk@festocom

### Hungary

Festo Kft.  
Csillaghegyi út 32-34.  
1037 Budapest  
Tel. ++36 (06)1/250 00 55, Fax 250 15 93  
E-mail: info\_hu@festocom

### India

Festo Controls Private Ltd.  
237B,  
Bommasandra Industrial Area,  
Bangalore Hosur Highway,  
Bangalore 560 099  
Tel. ++91 (0)80/22 89 41 00, Fax 783 20 58  
E-mail: info\_in@festocom

### Indonesia

PT. Festo  
JL. Sultan Iskandar Muda No.68  
Arteri Pondok Indah  
Jakarta 12240  
Tel. ++62 (0)21/27 50 79 00, Fax 27 50 79 98  
E-mail: info\_id@festocom

### Iran

Festo Pneumatic S.K.  
#1,Behbahan St. Ramsar ave  
Tehran 1581975411  
Tel. ++98 (0)21/88 82 92 25, Fax 882 21 62  
E-mail: info\_ir@festocom

### Ireland

Festo Limited  
Unit 5 Sandford Park  
Sandford Industrial Estate  
Dublin 18  
Tel. ++353(0)1/295 49 55, Fax 295 56 80  
E-mail: info\_ie@festocom

### Israel

Festo Pneumatic Israel Ltd.  
P.O. Box 1076, Ha'atzma'ut Road 48  
Yehud 56100  
Tel. ++972 (0)3/632 22 66, Fax 632 22 77  
E-mail: info\_il@festocom

### Italy

Festo S.p.A  
Via Enrico Fermi 36/38  
20090 Assago (MI)  
Tel. ++39 02/45 78 81, Fax 488 06 20  
E-mail: info\_it@festocom

### Japan

Festo K.K.  
1-26-10 Hayabuchi, Tsuzuki-ku  
Yokohama 224-0025  
Tel. ++81 (0)45/593 56 10, Fax 593 56 78  
E-mail: info\_jp@festocom

### Korea South

Festo Korea Co., Ltd.  
470-1 Gasan-dong, Geumcheon-gu  
Seoul #153-803  
Tel. ++82 (0)2/850 71 14, Fax 864 70 40  
E-mail: info\_kr@festocom

### Latvia

Festo SIA  
Deglava iela 60  
1035 Riga  
Tel. ++371 (0)7/57 78 64, Fax 57 79 46  
E-mail: info\_lv@festocom

### Lithuania

Festo UAB  
Karaliaus Mindaugo pr. 22  
3000 Kaunas  
Tel. ++370 (8)7/32 13 14, Fax 32 13 15  
E-mail: info\_lt@festocom

### Malaysia

Festo Sdn.Berhad  
10 Persiaran Industri  
Bandar Sri Damansara, Wilayah Persekutuan  
52200 Kuala Lumpur  
Tel. ++60 (0)3/62 86 80 00, Fax 62 75 64 11  
E-mail: info\_my@festocom

### Mexico

Festo Pneumatic, S.A.  
Av. Ceylán 3, Col. Tequesquinahuac  
54020 Tlalnepantla, Edo. de México  
Tel. ++52 (01)55/53 21 66 00, Fax 53 21 66 65  
E-mail: info\_mx@festocom

### Netherlands

Festo B.V.  
Schieweg 62  
2627 AN Delft  
Tel. ++31 (0)15/251 88 99, Fax 261 10 20  
E-mail: info\_nl@festocom

### New Zealand

Festo Limited  
MT. Wellington  
Auckland NZ  
Tel. ++64 (0)9/574 10 94, Fax 574 10 99  
E-mail: info\_nz@festocom

### Norway

Festo AB  
Ostensjoveien 27  
0661 Oslo  
Tel. ++47 22 72 89 50, Fax ++47 22 72 89 51  
E-mail: info\_no@festocom

### Peru

Festo S.R.L.  
Calle Amador Merino Reyna #480, San Isidro  
Lima, Perú  
Tel. ++51 (0)1/222 15 84, Fax 222 15 95

### Philippines

Festo Inc.  
KM 18, West Service Road, South Superhighway  
1700 Paranaque City, Metro Manila  
Tel. ++63 (0)2/776 68 88, Fax 823 42 19  
E-mail: info\_ph@festocom

### Poland

Festo Sp. z o.o.  
Janki k/Warszawy, ul. Mszczonowska 7  
05090 Raszyn  
Tel. ++48 (0)22/711 41 00, Fax 711 41 02  
E-mail: info\_pl@festocom

### Romania

Festo S.R.L.  
St. Constantin 17  
010217 Bucuresti  
Tel. ++40 (0)21/310 29 83, Fax 310 24 09  
E-mail: info\_ro@festocom

### Russia

Festo-RF 000  
Michurinskiy prosp., 49  
119607 Moskow  
Tel. ++7 495/737 34 00, Fax 737 34 01  
E-mail: info\_ru@festocom

### Singapore

Festo Pte. Ltd.  
6 Kian Teck Way  
Singapore 628754  
Tel. ++65 62 64 01 52, Fax ++65 62 61 10 26  
E-mail: info\_sg@festocom

### Slovakia

Festo spol. s r.o.  
Gaylovicová ul. 1  
83103 Bratislava 3  
Tel. ++421 (0)2/49 10 49 10, Fax 49 10 49 11  
E-mail: info\_sk@festocom

### Slovenia

Festo d.o.o. Ljubljana  
IC Trzin, Blatnica 8  
1236 Trzin  
Tel. ++386 (0)1/530 21 00, Fax 530 21 25  
E-mail: info\_si@festocom

### South Africa

Festo (Pty) Ltd.  
22-26 Electron Avenue, Isando, P.O. Box 255  
Isando 1600  
Tel. ++27 (0)11/971 55 00, Fax 974 21 57  
E-mail: info\_za@festocom

### Spain

Festo Pneumatic, S.A.U.  
Tel.: 901243660 Fax: 902243660  
Av. Gran Via, 159, Distrito económico  
Gran Via L'H  
ES-08908 Hospitalet de Llobregat, Barcelona  
Tel. ++3493/261 64 00, Fax 261 64 20  
E-mail: info\_es@festocom

### Sweden

Festo AB  
Stillsångsgatan 1, P.O. Box 21038  
20021 Malmö  
Tel. ++46 (0)40/38 38 40, Fax 38 38 10  
E-mail: info\_se@festocom

### Switzerland

Festo AG  
Moosmattstrasse 24  
8953 Dietikon ZH  
Tel. ++41 (0)44/744 55 44, Fax 744 55 00  
E-mail: info\_ch@festocom

### Taiwan

Festo Co., Ltd.  
9 Kung 8th Road  
Linkou 2nd Industrial Zone, Linkou #244  
Taipei Hsien Taiwan  
Tel. ++886 (0)2/26 01 92 81, Fax 26 01 92 87  
E-mail: info\_tw@festocom

### Thailand

Festo Ltd.  
67/1 Moo 6 Phaholyothin Road  
Klong 1, Klong Luang,  
Pathumthani 12120  
Tel. ++66 29 01 88 00, Fax ++66 29 01 88 33  
E-mail: info\_th@festocom

### Turkey

Festo San. ve Tic. A.S.  
Tuzla Mermerciler Organize  
Sanayi Bölgesi 6/18  
34956 Tuzla - Istanbul/TR  
Tel. ++90 (0)216/585 00 85, Fax 585 00 50  
E-mail: info\_tr@festocom

### Ukraine

Festo Ukraina  
Borisoglebskaja 11  
Kiev 04070  
Tel. ++380 (0)44/239 24 33, Fax 463 70 96  
E-mail: info\_ua@festocom

### United Kingdom

Festo Limited  
Applied Automation Centre, Caswell Road  
Brackmills Trading Estate  
Northampton NN4 7PY  
Tel. ++44 (0)1604/66 70 00, Fax 66 70 01  
E-mail: info\_gb@festocom

### United States

Festo Corporation (New York)  
Call Toll-free 800/993 3786  
Fax Toll-free 800/963 3786  
395 Moreland Road, P.O.Box 18023  
Hauppauge, N.Y. 11788  
Tel. ++1(0)314/770 01 12, Fax 770 16 84  
E-mail: info\_us@festocom

### Venezuela

Festo C.A.  
Av. 23, Esquina calle 71, No. 22-62  
Maracaibo, Edo. Zulia  
Tel. ++58 (0)261/759 09 44, Fax 759 04 55  
E-mail: festo@festocom.ve