




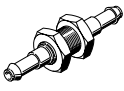
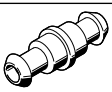
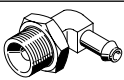
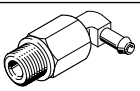
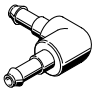
## Barbed fittings

**FESTO**

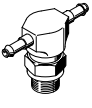

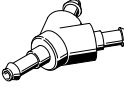
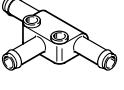


# Barbed fittings

## Product range overview

Design	Version	Type	Pneumatic connection 1				Pneumatic connection 2		→ Page
			M thread	G thread	Barbed connector	For tubing O.D. [mm]	Barbed connector	For tubing O.D. [mm]	
Straight shape	<b>Barbed fitting with male thread and external hex</b>								
		N	M5	–	–	–	PK-3 PK-4	–	5
	<b>Barbed fitting with male thread and external hex</b>								
		CN	M3	–	–	–	–	3, 4	6
			M5	–	–	–	–	3, 4, 6	
			–	G1/8	–	–	–	4, 6, 8	
			–	G1/4	–	–	–	6, 8	
			–	G3/8	–	–	–	8	
	<b>Barbed fitting with male thread and external hex – stainless steel version</b>								
		CRCN	M5	–	–	–	–	3, 4, 6	7
	–		G1/8	–	–	–	4, 6, 8		
	–		G1/4	–	–	–	6, 8		
	–		G3/8	–	–	–	8		
<b>Barbed bulkhead connector</b>									
	SCN	–	–	–	3	–	–	8	
		–	–	–	4	–	–		
		–	–	–	6	–	–		
		–	–	–	8	–	–		
<b>Barbed tubing connector</b>									
	RTU	–	–	PK-2	–	PK-2	–	9	
		–	–	PK-3	–	PK-2, PK-3, PK-4	–		
		–	–	PK-4	–	PK-4, PK-6	–		
		–	–	PK-6	–	PK-6	–		
L-shape	<b>Barbed elbow fitting with male thread – rotatable 360°</b>								
		LCN	M3	–	–	–	–	3, 4	10
			M5	–	–	–	–	3, 4, 6	
			–	G1/8	–	–	–	4, 6, 8	
			–	G1/4	–	–	–	6, 8	
			–	G3/8	–	–	–	8	
	<b>Barbed elbow fitting with male thread – extended housing part, rotatable 360°</b>								
		LCNH	M5	–	–	–	–	3, 4, 6	12
			–	G1/8	–	–	–	4, 6, 8	
			–	G1/4	–	–	–	6, 8	
	–		G3/8	–	–	–	8		
<b>Barbed L-connector</b>									
	L-PK	–	–	PK-2	–	–	–	14	
		–	–	PK-3	–	–	–		
		–	–	PK-4	–	–	–		
		–	–	PK-6	–	–	–		

## Product range overview

Design	Version	Type	Pneumatic connection 1				Pneumatic connection 2		→ Page
			M thread	G thread	Barbed connector	For tubing O.D. [mm]	Barbed connector	For tubing O.D. [mm]	
T-shape	<b>Barbed T-fitting with male thread – rotatable 360°</b>								
		TCN	M3	–	–	–	–	3, 4	15
	M5		–	3, 4, 6					
	–		G1/8	4, 6, 8					
	–		G1/4	6, 8					
	–		G3/8	8					
<b>Barbed T-connector</b>									
	T-PK	–	–	PK-2	–	–	–	16	
				PK-3					
				PK-4					
				PK-6					
Y-shape	<b>Barbed Y-connector</b>								
		Y-PK	–	–	PK-2	–	–	–	17
					PK-3				
					PK-4				
				PK-6					
<b>Barbed T-connector</b>									
	FCN	–	–	–	3	–	3, 4	18	
					4		4, 6		
					6		6, 8		
					8		8		

## Tube mounting/removal

## Available accessories

## Mounting:

1. Hold the tubing as close to the end as possible.
2. Rotate the tubing (approx. 90°) around the nipple axis while attaching it.

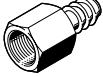
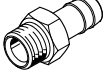

## Removing:

1. Use a knife to cut off the tubing behind the sealing and support edge. Be careful not to damage the barbed connector on the sealing and support edge.
2. Remove the tubing.

Connecting pliers ZMS-PK-3/4

→ Internet: zms

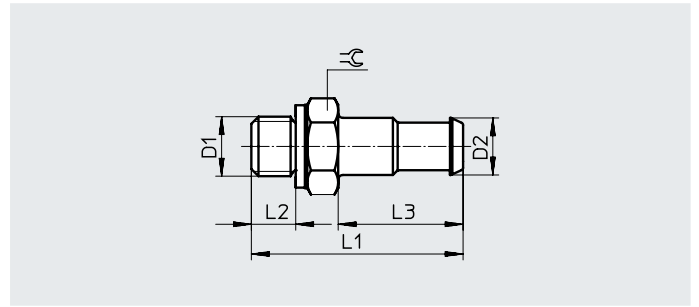
Product range overview

Design	Version	Type	Pneumatic connection D1			Pneumatic connection D2	→ Page
			G thread	R thread	NPT thread	Barbed connector	
<b>Barbed hose fitting</b>							
	C...-P		G1/8	-	-	PK-6	19
			G1/4	-	-	PK-6, PK-9	
			G3/8	-	-	PK-6, PK-9	
			G1/2	-	-	PK-13	
<b>Barbed hose fitting with sealing ring (aluminium and brass version)</b>							
	N...-P N...-MS		G1/8	-	-	PK-6	20
			G1/4	-	-	PK-6, PK-9	
			G3/8	-	-	PK-6, PK-9, PK-13	
			G1/2	-	-	PK-9, PK-13	
			G3/4	-	-	PK-13, PK-19	
			-	R1	-	PK-19	
			-	-	3/4 NPT	PK-19	
-	-	1 1/2 NPT	PK-19				
<b>Tubing clip to DIN 3017</b>							
	SK						22

## Datasheet

### Barbed fitting N

With male thread and external hex



#### General technical data

Design	Straight shape
Mounting position	Any
Type of seal on the screwed plug	Sealing ring

#### Operating and environmental conditions

Operating pressure for entire temperature range [bar]	-0.95 ... +10
Operating medium	Compressed air to ISO 8573-1:2010 [7:-;-]
Ambient temperature	-10 - 60°C
Note on the operating/pilot medium	Lubricated operation possible (in which case lubrication will always be required)
Corrosion resistance class CRC <sup>1)</sup>	1

1) More information [www.festo.com/x/topic/crc](http://www.festo.com/x/topic/crc)

#### Materials

Housing	Brass
Note on materials	RoHS-compliant
LABS (PWIS) conformity	VDMA24364-B1/B2-L

#### Dimensions and ordering data

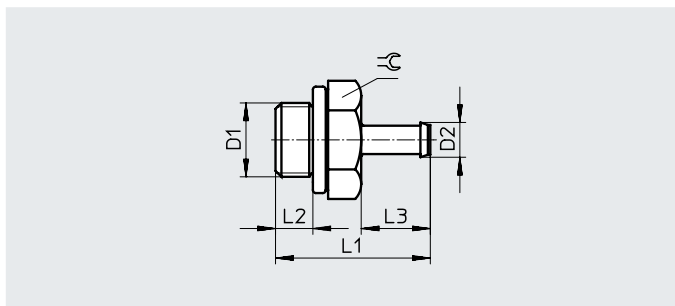
Pneumatic connection	Max. tightening torque	Nominal width	D2	L1	L2	L3	⌀	Weight/piece	Part no.	Type	PU <sup>1)</sup>
D1	[Nm]	[mm]						[g]			
<b>Metric thread with sealing ring</b>											
M5	PK-3	2.5	3.6	16	3.5	8.5	7	1	4446	N-M5-PK-3	10
	PK-4	2.5	4.8	18	3.5	10.5	7	2	4902	N-M5-PK-4	10

1) Packaging unit

## Datasheet

### Barbed fitting CN

With male thread and external hex



#### General technical data

Type of seal on the screwed plug	Sealing ring
----------------------------------	--------------

#### Operating and environmental conditions

Operating pressure [bar]	-0.95 ... +10
Operating medium	Compressed air to ISO 8573-1:2010 [7:-:-]
Note on the operating/pilot medium	Lubricated operation possible (in which case lubrication will always be required)
Ambient temperature [°C]	0 ... +60
Corrosion resistance class CRC <sup>1)</sup>	2

1) More information [www.festo.com/x/topic/crc](http://www.festo.com/x/topic/crc)

#### Materials

Pneumatic connection 1	Male thread M3	Male thread M5	Male thread G1/8; G1/4; G3/8
Housing	High-alloy steel	Steel	Aluminium
Note on materials	RoHS-compliant		
LABS (PWIS) conformity	VDMA24364-B1/B2-L		

#### Dimensions and ordering data

Pneumatic connection		Nominal width	D2	L1	L2	L3	⊕	Part no.	Type	PU <sup>1)</sup>
Male thread	For tubing O.D. [mm]	[mm]								
<b>M thread with sealing ring</b>										
M3	3	1.5	2.6	10	3	5	4.5	15871	CN-M3-PK-2	10
	4	1.5	3.4	11	3	6	4.5	15872	CN-M3-PK-3	10
M5	3	1.5	2.95	13.8	3.8	6	7	19521	CN-M5-PK-2	10
	4	2.5	3.6	17.5	3.8	9.7	7	12255	CN-M5-PK-3	10
	6	2.5	4.8	19.5	3.8	11.7	7	12256	CN-M5-PK-4	10
<b>G thread with sealing ring</b>										
G1/8	4	2.5	3.6	20.2	4.9	9.7	13	11944	CN-1/8-PK-3	10
	6	3.2	4.8	22.2	4.9	11.7	13	11945	CN-1/8-PK-4	10
	8	5.3	7	24.5	4.9	14	13	11946	CN-1/8-PK-6	10
G1/4	6	3.2	4.8	24.7	5.8	11.7	17	11947	CN-1/4-PK-4	10
	8	5.3	7	27	5.8	14	17	11948	CN-1/4-PK-6	10
G3/8	8	5.3	7	28	6.8	14	19	11949	CN-3/8-PK-6	10

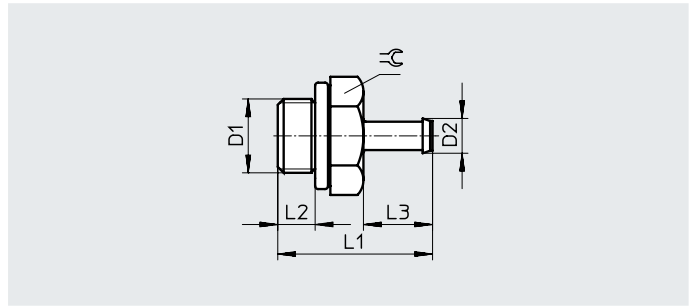
1) Packaging unit

## Datasheet

### Barbed fitting CRCN

Stainless steel version

With male thread and external hex



#### General technical data

Type of seal on the screwed plug	Sealing ring
----------------------------------	--------------

#### Operating and environmental conditions

Operating pressure for entire temperature range [bar]	-0.95 ... +10
Operating medium	Compressed air to ISO 8573-1:2010 [7:-:-]
Note on the operating/pilot medium	Lubricated operation possible (in which case lubrication will always be required)
Ambient temperature [°C]	0 ... +60
Corrosion resistance class CRC <sup>1)</sup>	2
Food-safe <sup>2)</sup>	See supplementary material information

1) More information [www.festo.com/x/topic/crc](http://www.festo.com/x/topic/crc)

2) More information: [www.festo.com/catalogue/crcn](http://www.festo.com/catalogue/crcn) → Support/Downloads.

#### Materials

Type	CRCN-M5	CRCN-1/8	CRCN-1/4	CRCN-3/8
Housing	High-alloy stainless steel			
Thread seal	High-alloy stainless steel, NBR	Reinforced PA, TPE-U(PU)		
Note on materials	RoHS-compliant			
LABS (PWIS) conformity	VDMA24364-B2-L			

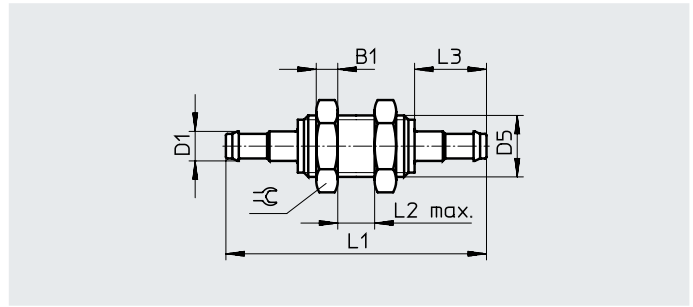
#### Dimensions and ordering data

Pneumatic connection		Nominal width	D2	L1	L2	L3	⌀	Weight/piece [g]	Part no.	Type	PU <sup>1)</sup>
Male thread	For tubing O.D. [mm]	[mm]									
<b>M thread with sealing ring</b>											
M5	3	1.5	2.95	13.8	3.8	6	7	1.8	<b>30985</b>	<b>CRCN-M5-PK-2</b>	<b>10</b>
	4	2.5	3.6	17.5	3.8	9.7	7	1.74	<b>13967</b>	<b>CRCN-M5-PK-3</b>	<b>10</b>
	6	2.5	4.8	19.5	3.8	11.7	7	2.58	<b>13968</b>	<b>CRCN-M5-PK-4</b>	<b>10</b>
<b>G thread with sealing ring</b>											
G1/8	4	2.5	3.6	20.2	4.9	9.7	13	7.52	<b>13969</b>	<b>CRCN-1/8-PK-3</b>	<b>10</b>
	6	3.2	4.8	22.2	4.9	11.7	13	7.86	<b>13970</b>	<b>CRCN-1/8-PK-4</b>	<b>10</b>
	8	5.3	7	24.5	4.9	14	13	7.5	<b>13971</b>	<b>CRCN-1/8-PK-6</b>	<b>10</b>
G1/4	6	3.2	4.8	24.7	5.8	11.7	17	17.73	<b>13972</b>	<b>CRCN-1/4-PK-4</b>	<b>1</b>
	8	5.3	7	27	5.8	14	17	16.5	<b>13973</b>	<b>CRCN-1/4-PK-6</b>	<b>1</b>
G3/8	8	5.3	7	28	6.8	14	19	23.7	<b>13974</b>	<b>CRCN-3/8-PK-6</b>	<b>1</b>

1) Packaging unit

Datasheet

Barbed bulkhead connector SCN



**Operating and environmental conditions**

Operating pressure [bar]	-0.95 ... +10
Operating medium	Compressed air to ISO 8573-1:2010 [7:-:-]
Note on the operating/pilot medium	Lubricated operation possible (in which case lubrication will always be required)
Ambient temperature [°C]	0 ... +60
Corrosion resistance class CRC <sup>1)</sup>	2

1) More information [www.festo.com/x/topic/crc](http://www.festo.com/x/topic/crc)

**Materials**

Housing	Aluminium
Nut	Galvanised steel
Note on materials	RoHS-compliant
LABS (PWIS) conformity	VDMA24364-B1/B2-L

**Dimensions and ordering data**

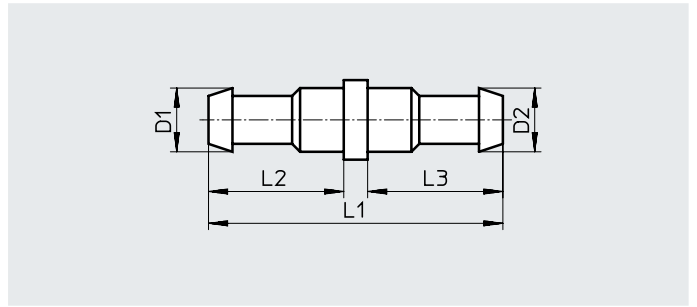
Pneumatic connection For tubing O.D. [mm]	Nominal width [mm]	B1	D1	D5	L1	L2	L3	☞	Weight/ piece [g]	Part no.	Type	PU <sup>1)</sup>
3	1.5	2.2	2.95	M4	23.4	6	6	7	1	19528	SCN-PK-2	10
4	1.9	3.2	3.6	M6x0.75	35.3	8	9.7	10	4	11972	SCN-PK-3	10
6	2.8	3.5	4.8	M10x1	42.4	10	11.7	13	7	11973	SCN-PK-4	10
8	4.8	4	7	M12x1	48	10	14	17	10	11974	SCN-PK-6	10

1) Packaging unit



## Datasheet

## Barbed tubing connector RTU



## Operating and environmental conditions

Operating medium	Compressed air to ISO 8573-1:2010 [7:--:-]
Note on the operating/pilot medium	Lubricated operation possible (in which case lubrication will always be required)

## Materials

Housing	Brass
Note on materials	RoHS-compliant
LABS (PWIS) conformity	VDMA24364-B1/B2-L

## Dimensions and ordering data

Pneumatic connection		Nominal width [mm]	D1	D2	L1	L2	L3	Weight/ piece [g]	Part no.	Type	PJ <sup>1)</sup>
PK-2	PK-2	1.5	2.95	2.95	14	6	6	1	19541	RTU-PK-2/2-B	10
PK-3	PK-2	1.5	3.6	2.95	17.7	9.7	6	1	19542	RTU-PK-3/2	10
	PK-3	2.5	3.6	3.6	19	8.5	8.5	1	4805	RTU-PK-3/3	10
	PK-4	2.5	3.6	4.8	20	8.5	10.5	2	4499	RTU-PK-3/4	10
PK-4	PK-4	3.4	4.8	4.8	23	10.5	10.5	2	4806	RTU-PK-4/4	10
	PK-6	3.4	4.8	7	25.5	10.5	13	2	7604	RTU-PK-4/6	10
PK-6	PK-6	5.3	7	7	28	13	13	3	7605	RTU-PK-6/6	10

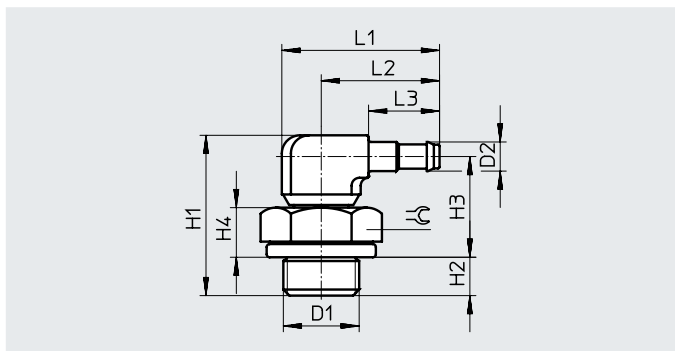
1) Packaging unit

Datasheet

**Barbed elbow fitting LCN**

With male thread

Rotatable 360°



**General technical data**

Type of seal on the screwed plug	Sealing ring
----------------------------------	--------------

**Operating and environmental conditions**

Operating pressure [bar]	-0.95 ... +10
Operating medium	Compressed air to ISO 8573-1:2010 [7:-:-]
Note on the operating/pilot medium	Lubricated operation possible (in which case lubrication will always be required)
Ambient temperature [°C]	0 ... +60
Corrosion resistance class CRC <sup>1)</sup>	2

1) More information [www.festo.com/x/topic/crc](http://www.festo.com/x/topic/crc)

**Materials**

Pneumatic connection 1	Male thread M3	Male thread M5	Male thread G1/8/G1/4/G3/8
Housing	High-alloy steel Die-cast zinc	Steel	Aluminium
Note on materials	RoHS-compliant		
LABS (PWS) conformity	VDMA24364-B1/B2-L		

**Dimensions**

Pneumatic connection		D2	H1	H2	H3	H4	L1	L2	L3	⌀
Male thread	For tubing O.D. [mm]									
<b>M thread with sealing ring</b>										
M3	3	2.95	14	2.8	9.2	3.0	12.2	9.6	6	4.5
	4	3.6	15.2	2.8	9.8	3.0	15.9	13.3	9.7	4.5
M5	3	2.95	16	3.8	10.2	4.0	12.2	9.6	6	7
	4	3.6	20.1	3.8	13.7	4.0	18.7	14.7	9.7	7
	6	4.8	21.4	3.8	13.9	4.0	20.7	16.7	11.7	7
<b>G thread with sealing ring</b>										
G1/8	4	3.6	21.2	4.9	13.7	5.6	24	17.5	9.7	13
	6	4.8	22.55	4.9	14.15	5.6	26	19.5	11.7	13
	8	7	24.45	4.9	15.15	5.6	28.5	22	14.2	13
G1/4	6	4.8	25.05	5.8	15.75	7.2	26	19.5	11.7	17
	8	7	26.95	5.8	16.75	7.2	28.5	22	14.2	17
G3/8	8	7	27.95	6.8	16.75	7.2	28.5	22	14.2	19

## Datasheet

Ordering data		Nominal size [mm]	Weight/piece [g]	Part no.	Type	PU <sup>1)</sup>
Pneumatic connection D1	For tubing O.D. [mm]					
<b>M thread with sealing ring</b>						
M3	3	1.3	2	30491	LCN-M3-PK-2-B	10
	4	2.0	2	30982	LCN-M3-PK-3	10
M5	3	1.3	4	19523	LCN-M5-PK-2	10
	4	2.0	5	12257	LCN-M5-PK-3	10
	6	2.9	6	12258	LCN-M5-PK-4	10
<b>G thread with sealing ring</b>						
G1/8	4	2.0	9	11955	LCN-1/8-PK-3	10
	6	2.9	10	11956	LCN-1/8-PK-4	10
	8	4.9	11	11957	LCN-1/8-PK-6	10
G1/4	6	2.9	13	12958	LCN-1/4-PK-4	10
	8	4.9	15	12959	LCN-1/4-PK-6	10
G3/8	8	4.9	20	12960	LCN-3/8-PK-6	10

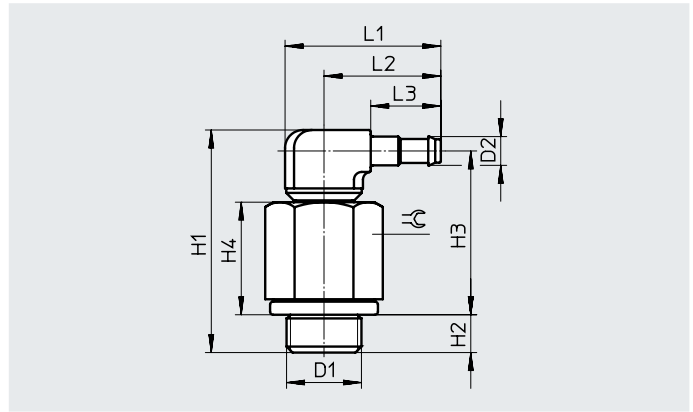
1) Packaging unit

## Datasheet

### Barbed elbow fitting LCNH

With male thread

Rotatable 360°



#### General technical data

Type of seal on the screwed plug	Sealing ring
----------------------------------	--------------

#### Operating and environmental conditions

Operating pressure [bar]	-0.95 ... +10
Operating medium	Compressed air to ISO 8573-1:2010 [7:-:-]
Note on the operating/pilot medium	Lubricated operation possible (in which case lubrication will always be required)
Ambient temperature [°C]	0 ... +60
Corrosion resistance class CRC <sup>1)</sup>	2

1) More information [www.festo.com/x/topic/crc](http://www.festo.com/x/topic/crc)

#### Materials

Pneumatic connection 1	Male thread M5	Male thread G1/8/G1/4/G3/8
Housing	Steel Die-cast zinc	Aluminium
Note on materials	RoHS-compliant	
LABS (PWIS) conformity	VDMA24364-B1/B2-L	

#### Dimensions

Pneumatic connection		D2	H1	H2	H3	H4	L1	L2	L3	⌀
Male thread	For tubing O.D.									
D1	[mm]									
<b>M thread with sealing ring</b>										
M5	3	2.95	26.9	3.8	21.1	14.9	12.2	9.6	6	7
	4	3.6	28.7	3.8	22.3	12.6	18.7	14.7	9.7	7
	6	4.8	30.2	3.8	22.9	12.6	20.7	16.7	11.7	7
<b>G thread with sealing ring</b>										
G1/8	4	3.6	31.8	4.9	24.3	16.2	24	17.5	9.7	13
	6	4.8	33.15	4.9	24.75	16.2	26	19.5	11.7	13
	8	7	35.05	4.9	25.75	16.2	28.5	22	14.2	13
G1/4	6	4.8	35.65	5.8	26.35	17.8	26	19.5	11.7	17
	8	7	37.55	5.8	27.35	17.8	28.5	22	14.2	17
G3/8	8	7	38.55	6.8	27.35	17.8	28.5	22	14.2	19

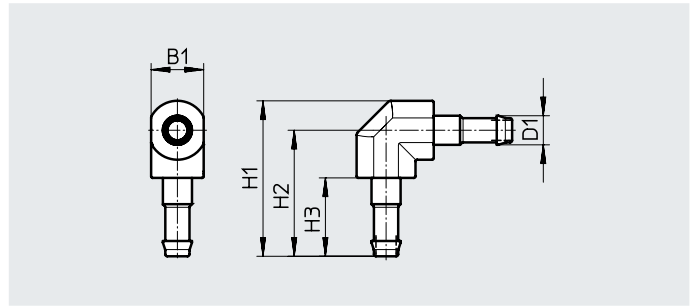
## Datasheet

Ordering data						
Pneumatic connection		Nominal size	Weight/piece	Part no.	Type	PU <sup>1)</sup>
Male thread	For tubing O.D.					
D1	[mm]	[mm]	[g]			
<b>M thread with sealing ring</b>						
M5	3	1.3	8	35982	LCNH-M5-PK-2	10
	4	2.0	9	35983	LCNH-M5-PK-3	10
	6	2.9	10	35984	LCNH-M5-PK-4	10
<b>G thread with sealing ring</b>						
G1/8	4	2.0	13	35985	LCNH-1/8-PK-3	10
	6	2.9	14	35986	LCNH-1/8-PK-4	10
	8	4.9	16	35987	LCNH-1/8-PK-6	10
G1/4	6	2.9	21	35988	LCNH-1/4-PK-4	10
	8	4.9	22	35989	LCNH-1/4-PK-6	10
G3/8	8	4.9	29	35990	LCNH-3/8-PK-6	10

1) Packaging unit

Datasheet

Barbed L-connector L-PK



**Operating and environmental conditions**

Operating medium	Compressed air to ISO 8573-1:2010 [7:--:-]
Note on the operating/pilot medium	Lubricated operation possible (in which case lubrication will always be required)

**Materials**

Housing	Brass, POM
Note on materials	RoHS-compliant
LABS (PWIS) conformity	VDMA24364-B1/B2-L

**Dimensions and ordering data**

Pneumatic connection	Nominal width [mm]	B1	D1	H1	H2	H3	Weight/ piece [g]	Part no.	Type	PU <sup>1)</sup>
PK-2	1.5	4	2.95	12.2	10.2	6	1	19539	L-PK-2	10
PK-3	2.5	6.5	3.6	19.25	15.6	9.7	1	7473	L-PK-3	10
PK-4	3.4	7.8	4.8	23.1	18.7	11.7	2	9584	L-PK-4	10
PK-6	5.3	10.4	7	31.5	26.3	14	7	150012	L-PK-6	10

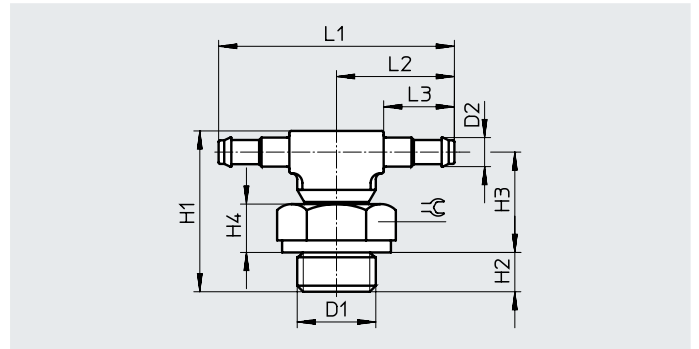
1) Packaging unit

# Datasheet

## Barbed T-fitting, TCN

With male thread

Rotatable 360°



### General technical data

Type of seal on the screwed plug	Sealing ring
----------------------------------	--------------

### Operating and environmental conditions

Operating pressure [bar]	-0.95 ... +10
Operating medium	Compressed air to ISO 8573-1:2010 [7:-:-]
Note on the operating/pilot medium	Lubricated operation possible (in which case lubrication will always be required)
Ambient temperature [°C]	0 ... +60
Corrosion resistance class CRC <sup>1)</sup>	2

1) More information [www.festo.com/x/topic/crc](http://www.festo.com/x/topic/crc)

### Materials

Pneumatic connection 1	Male thread M3	Male thread M5	Male thread G1/8/G1/4/G3/8
Housing	High-alloy steel	Steel	Aluminium
	Die-cast zinc		
Note on materials	RoHS-compliant		
LABS (PWIS) conformity	VDMA24364-B1/B2-L		

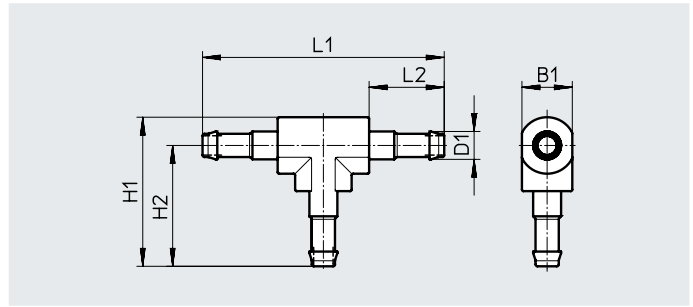
### Dimensions and ordering data

Pneumatic connection		Nominal width	D2	H1	H2	H3	H4	L1	L2	L3	≙	Part no.	Type	PU <sup>1)</sup>
Male thread	For tubing O.D.	[mm]												
D1	[mm]	[mm]												
<b>M thread with sealing ring</b>														
M3	3	1.3	2.95	14	2.8	9.2	3.0	19.2	9.6	6	4.5	30492	TCN-M3-PK-2	10
	4	2.0	3.6	15.2	2.8	9.8	3.0	26.6	13.3	9.7	4.5	30983	TCN-M3-PK-3	10
M5	3	1.3	2.95	16	3.8	10.2	4.0	19.2	9.6	6	7	19525	TCN-M5-PK-2	10
	4	2.0	3.6	20.1	3.8	13.7	4.0	29.4	14.7	9.7	7	12259	TCN-M5-PK-3	10
	6	2.9	4.8	18.1	3.8	14.3	4.0	33.4	16.7	11.7	7	12432	TCN-M5-PK-4	10
<b>G thread with sealing ring</b>														
G1/8	4	2.0	3.6	21.2	4.9	13.7	5.6	35	17.5	9.7	13	11961	TCN-1/8-PK-3	10
	6	2.9	4.8	22.55	4.9	14.15	5.6	39	19.5	11.7	13	11962	TCN-1/8-PK-4	10
	8	4.9	7	24.45	4.9	15.15	5.6	44	22	14.2	13	11963	TCN-1/8-PK-6	10
G1/4	6	2.9	4.8	25.05	5.8	15.75	7.2	39	19.5	11.7	17	11964	TCN-1/4-PK-4	10
	8	4.9	7	26.95	5.8	16.75	7.2	44	22	14.2	17	11965	TCN-1/4-PK-6	10
G3/8	8	4.9	7	27.95	6.8	16.75	7.2	44	22	14.2	19	11966	TCN-3/8-PK-6	10

1) Packaging unit

Datasheet

Barbed T-connector T-PK



**Operating and environmental conditions**

Operating medium	Compressed air to ISO 8573-1:2010 [7:--:-]
Note on the operating/pilot medium	Lubricated operation possible (in which case lubrication will always be required)

**Materials**

Housing	Brass, POM
Note on materials	RoHS-compliant
LABS (PWIS) conformity	VDMA24364-B1/B2-L

**Dimensions and ordering data**

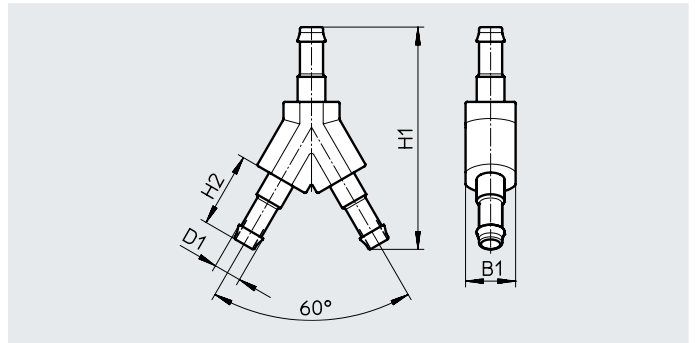
Pneumatic connection	Nominal width [mm]	B1	D1	H1	H2	L1	L2	Weight/ piece [g]	Part no.	Type	PU <sup>1)</sup>
PK-2	1.5	4	2.95	12.2	10.2	20.4	6	1	30919	T-PK-2	10
PK-3	2.5	6.5	3.6	19.25	15.6	31.2	9.7	2	7267	T-PK-3	10
PK-4	3.4	7.8	4.8	23	18.7	37.4	11.7	3	9585	T-PK-4	10
PK-6	5.3	10.4	7	31.5	26.3	52.6	14	11	150015	T-PK-6	10

1) Packaging unit



# Datasheet

## Barbed Y-connector Y-PK



### Operating and environmental conditions

Operating medium	Compressed air to ISO 8573-1:2010 [7:-:-]
Note on the operating/pilot medium	Lubricated operation possible (in which case lubrication will always be required)

### Materials

Housing	Brass, POM
Note on materials	RoHS-compliant
LABS (PWIS) conformity	VDMA24364-B1/B2-L

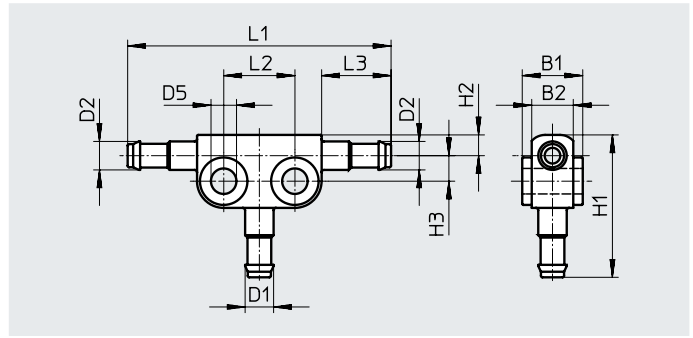
### Dimensions and ordering data

Pneumatic connection	Nominal width [mm]	B1	D1	H1	H2	Weight/ piece [g]	Part no.	Type	PU <sup>1)</sup>
PK-2	1.5	4	2.95	18	6	1	19540	Y-PK-2	10
PK-3	2.5	6.5	3.6	28.8	9.7	2	7269	Y-PK-3	10
PK-4	3.4	7.8	4.8	34.5	11.7	3	9586	Y-PK-4	10
PK-6	5.3	10.4	7	49.2	14	12	150013	Y-PK-6	10

1) Packaging unit

Datasheet

Barbed T-connector FCN



**Operating and environmental conditions**

Operating pressure [bar]	-0.95 ... +10
Operating medium	Compressed air to ISO 8573-1:2010 [7:--]
Note on the operating/pilot medium	Lubricated operation possible (in which case lubrication will always be required)
Ambient temperature [°C]	0 ... +60
Corrosion resistance class CRC <sup>1)</sup>	2

1) More information [www.festo.com/x/topic/crc](http://www.festo.com/x/topic/crc)

**Materials**

Housing	Die-cast zinc
Note on materials	RoHS-compliant
LABS (PWIS) conformity	VDMA24364-B1/B2-L

**Dimensions**

Pneumatic connection For tubing O.D.		B1	B2	D1	D2	D5	H1	H2	H3	L1	L2	L3
1 [mm]	2 [mm]											
3	3	6	4	2.95	2.95	3.2	15.7	3.1	2.6	28	8	6
	4	8.4	5.2	2.95	3.6	4.3	17.9	3.5	3.9	38.4	10	9.7
4	4	8.4	5.2	3.6	3.6	4.3	21.6	3.5	3.9	38.4	10	9.7
	6	10.2	7	3.6	4.8	4.3	22	3.5	4.3	44.4	12	11.7
6	6	10.2	7	4.8	4.8	4.3	24	3.5	4.3	44.4	12	11.7
	8	12	8.8	4.8	7	4.3	25.9	4.4	5.3	49.4	12	14.2
8	8	12	8.8	7	7	4.3	28.4	4.4	5.3	49.4	12	14.2

**Ordering data**

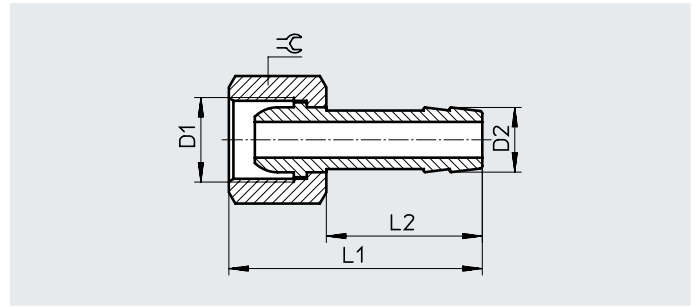
Pneumatic connection For tubing O.D.		Nominal size	Weight/piece	Part no.	Type	PU <sup>1)</sup>
1 [mm]	2 [mm]	[mm]	[g]			
3	3	1.3	5	19527	FCN-3-PK-2B	10
	4	1.3	8	31314	FCN-3-PK-3/2	10
4	4	2	8	14768	FCN-3-PK-3	10
	6	2	12	31315	FCN-3-PK-4/3	10
6	6	2.9	12	14769	FCN-3-PK-4	10
	8	2.9	16	31316	FCN-3-PK-6/4	10
8	8	4.9	16	14770	FCN-3-PK-6	10

1) Packaging unit

## Datasheet

### Barbed hose fitting C-...-P

Plastic tubing is inserted and then secured with a hose clip SK.



#### Operating and environmental conditions

Operating medium	Compressed air to ISO 8573-1:2010 [7:-:-]
Note on the operating/pilot medium	Lubricated operation possible (in which case lubrication will always be required)

#### Materials

Housing	Brass
LABS (PWIS) conformity	VDMA24364-B1/B2-L

#### Dimensions and ordering data

Pneumatic connection		Nominal width	D2	L1	L2	≅	Weight/ piece	Part no.	Type	PU <sup>1)</sup>
D1		[mm]					[g]			
<b>G thread</b>										
G1/8	PK-6	4	7	36	24	13	18	2021	C-1/8-P-6	10
G1/4	PK-6	4.5	7	39	24	17	28	2022	C-1/4-P-6	10
	PK-9	5.5	10	39	24	17	34	2023	C-1/4-P-9	10
G3/8	PK-6	4.5	7	39	24	19	31	2024	C-3/8-P-6	1
	PK-9	6.5	10	39	24	19	34	2025	C-3/8-P-9	1
G1/2	PK-13	11	14.8	50	30	24	64	2026	C-1/2-P-13	1

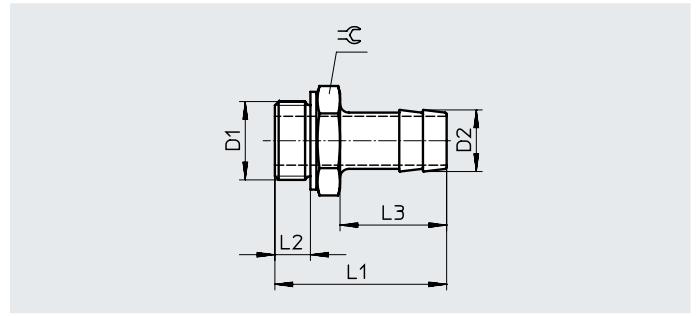
1) Packaging unit

## Datasheet

### Barbed hose fitting N-...-P

Aluminium version

Plastic tubing is inserted and then secured with a hose clip SK.



#### General technical data

Design	Straight shape
Mounting position	Any
Type of seal on the screwed plug	Sealing ring (G thread)
	Coating (R thread and NPT thread)

#### Operating and environmental conditions

Operating pressure for entire temperature range [bar]	-0.95 ... +16
Operating medium	Compressed air to ISO 8573-1:2010 [7:-:-]
Ambient temperature	-10 - 60 °C
LABS (PWIS) conformity	VDMA24364-B1/B2-L
Note on the operating/pilot medium	Lubricated operation possible (in which case lubrication will always be required)
Corrosion resistance class CRC <sup>1)</sup>	2

1) More information [www.festo.com/x/topic/crc](http://www.festo.com/x/topic/crc)

#### Materials

Housing	Anodised aluminium
Note on materials	RoHS-compliant
LABS (PWIS) conformity	VDMA24364-B1/B2-L

#### Dimensions and ordering data

Pneumatic connection		Max. tightening torque [Nm]	Nominal size [mm]	Dimensions [mm]					Weight/piece [g]	Part no.	Type	PU <sup>1)</sup>
Male thread	For tubing I.D.			D2	L1	L2	L3	⌀				
D1												
<b>G thread with sealing ring</b>												
G1/8	6	5	4.5	7	34.7	4.9	24.2	13	3.33	3605	N-1/8-P-6	10
G1/4	6	12	4.5	7	37.1	5.8	24.1	17	6.3	3606	N-1/4-P-6	10
	9	12	6.5	10	37.1	5.8	24.1	17	7.14	3607	N-1/4-P-9	1
G3/8	6	15	4.5	7	38.1	6.8	24.1	19	9	3608	N-3/8-P-6	1
	9	15	7.6	10	38.1	6.8	24.1	19	8.77	3609	N-3/8-P-9	1
	13	15	11	14.8	45.4	6.8	30	19	178	36160	N-3/8-P-13	1
G1/2	9	18	8	10.3	39.5	8.15	24	24	15.1	3610	N-1/2-P-9	1
	13	18	11	14.8	45.5	8.15	30	24	15	3611	N-1/2-P-13	1
G3/4	13	40	11	14.8	50	9.05	30	32	31.75	3612	N-3/4-P-13	1
	19	40	16.5	20.8	56	9.05	36	32	33.61	3613	N-3/4-P-19	1
<b>R thread</b>												
R1	19	-	16.5	20.8	68.6	-	36	34	67.6	572260	N-1-P-19	1
<b>NPT thread</b>												
3/4 NPT	19	40	16.5	20.8	66.68	-	36	30.17	44	564848	N-3/4-P-19-NPT	1
1 1/2 NPT	19	-	16.5	20.8	74.0	-	36	34	76.6	572243	N-1-P-19-NPT	1

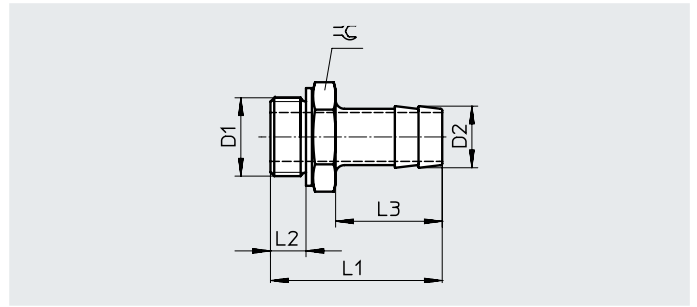
1) Packaging unit

## Datasheet

### Barbed hose fitting N-...-P-...-MS

Brass version

Plastic tubing is inserted and then secured with a hose clip SK.



#### General technical data

Design	Straight shape
Mounting position	Any
Type of seal on the screwed plug	Sealing ring

#### Operating and environmental conditions

Operating pressure for entire temperature range	[bar]	-0.95 ... +16
Operating medium		Compressed air to ISO 8573-1:2010 [7:-:-]
Ambient temperature		-10 - 60 °C
LABS (PWIS) conformity		VDMA24364-B1/B2-L
Note on the operating/pilot medium		Lubricated operation possible (in which case lubrication will always be required)
Corrosion resistance class CRC <sup>1)</sup>		1

1) More information [www.festo.com/x/topic/crc](http://www.festo.com/x/topic/crc)

#### Materials

Housing	Brass
Note on materials	RoHS-compliant
LABS (PWIS) conformity	VDMA24364-B1/B2-L

#### Dimensions and ordering data

Pneumatic connection		Max. tightening torque	Nominal size	Dimensions [mm]					Weight/piece	Part no.	Type	PU <sup>1)</sup>
Male thread	For tubing I.D.			D2	L1	L2	L3	≡				
D1		[Nm]	[mm]					[g]				
<b>G thread with sealing ring</b>												
G1/8	6	5	4.5	7	34.7	4.9	24.2	13	9	15630	N-1/8-P-6-MS	10
G1/4	6	12	4.5	7	37.1	5.8	24.1	17	18	15631	N-1/4-P-6-MS	10
	9	12	6.5	10	37.1	5.8	24.1	17	20	15632	N-1/4-P-9-MS	10
G3/8	6	15	4.5	7	38.1	6.8	24.1	19	26	15633	N-3/8-P-6-MS	10
	9	15	7.6	10	38.1	6.8	24.1	19	25	15634	N-3/8-P-9-MS	10
	13	15	11	14.8	45.4	6.8	30	19	243	36161	N-3/8-P-13-MS	1
G1/2	9	18	8	10.3	39.5	8.15	24	24	44	15635	N-1/2-P-9-MS	1
	13	18	11	14.8	45.5	8.15	30	24	45	15636	N-1/2-P-13-MS	1
G3/4	13	40	11	14.8	50	9.05	30	32	94	15637	N-3/4-P-13-MS	1
	19	40	16.5	20.8	56	9.05	36	32	96	15638	N-3/4-P-19-MS	1

1) Packaging unit

## Hose clips SK

### Datasheet

#### Hose clip SK to DIN 3017

The hose clips are provided with a screw thread. 9 mm band width.



#### Materials

Housing	Steel
LABS (PWIS) conformity	VDMA24364-B1/B2-L

#### Ordering data

Clamping range $\varnothing$ [mm]	Weight/piece [g]	Part no.	Type	PU <sup>1)</sup>
8 ... 16	7	<b>9274</b>	<b>SK-8-16</b>	<b>10</b>
16 ... 27	12	<b>9275</b>	<b>SK-16-27</b>	<b>10</b>
20 ... 32	13	<b>9276</b>	<b>SK-20-32</b>	<b>10</b>

1) Packaging unit