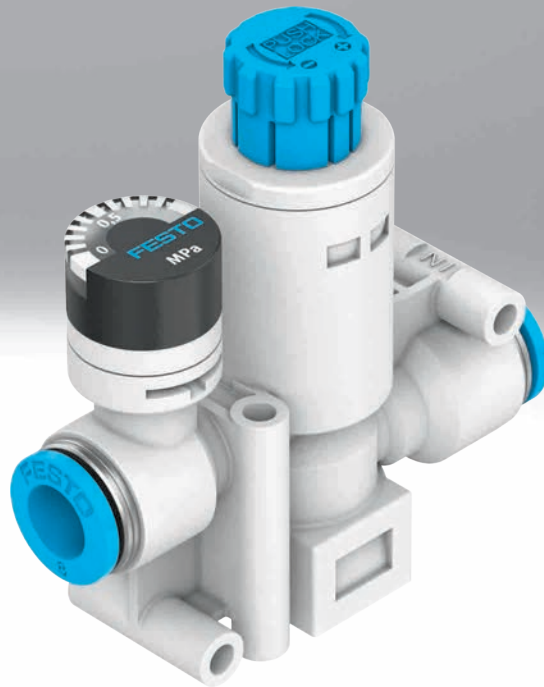


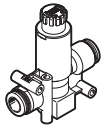
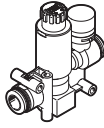
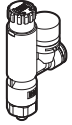
Pressure regulator VRPA, NPT

FESTO



Product range overview and type codes

Product range overview

| Design type | Feature | Type | Pneumatic connection | | Standard nominal flow rate [l/min] | Pressure gauge scale | |
|-------------|---|---------|----------------------|---------|---------------------------------------|----------------------|-----|
| | | | 1 | 2 | | MPa | psi |
| Inline | Without pressure gauge | | | | | | |
| |  | VRPA-C | QS-4 | QS-4 | 80 | - | - |
| | | | QS-6 | QS-6 | 90 | - | - |
| | | | QS-8 | QS-8 | 130 | - | - |
| | With pressure gauge | | | | | | |
| |  | VRPA-CM | QS-4 | QS-4 | 80 | ■ | - |
| | | | QS-6 | QS-6 | 90 | ■ | - |
| | | | QS-8 | QS-8 | 125 | ■ | - |
| QS-1/4 | | | QS-1/4 | 95 | - | ■ | |
| L-shape | With pressure gauge | | | | | | |
| |  | VRPA-LM | M5 | QS-4 | 80 | ■ | - |
| | | | | QS-6 | 90 | ■ | - |
| | | | R1/8 | QS-4 | 90 | ■ | - |
| | | | | QS-6 | 100 | ■ | - |
| | | | | QS-8 | 110 | ■ | - |
| | | | R1/4 | QS-6 | 115 | ■ | - |
| | | | | QS-8 | 130 | ■ | - |
| | | | 1/8 NPT | QS-1/4 | 110 | - | ■ |
| | | | | QS-5/16 | 130 | - | ■ |
| | | | 1/4 NPT | QS-1/4 | 110 | - | ■ |
| | | | | QS-5/16 | 130 | - | ■ |

Type codes

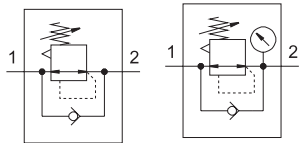
| | | |
|------|------------------------|--|
| 001 | Series | |
| VRPA | Pressure regulator | |
| 002 | Design | |
| C | Inline | |
| L | L-shape | |
| 003 | Pressure indication | |
| | Without pressure gauge | |
| M | With pressure gauge | |

| | | |
|-----|----------------------------|--|
| 004 | Pneumatic connection 1 | |
| Q4 | Push-in connector 4 mm | |
| Q6 | Push-in connector 6 mm | |
| Q8 | Push-in connector 8 mm | |
| T14 | Push-in connector for 1/4" | |
| M5 | M5 | |
| R18 | R1/8 | |
| R14 | R1/4 | |
| N18 | 1/8 NPT | |
| N14 | 1/4 NPT | |

| | | |
|------|-----------------------------|--|
| 005 | Pneumatic connection 2 | |
| Q4 | Push-in connector 4 mm | |
| Q6 | Push-in connector 6 mm | |
| Q8 | Push-in connector 8 mm | |
| T14 | Push-in connector for 1/4" | |
| T516 | Push-in connector for 5/16" | |
| E | Same size as connection 1 | |

Data sheet

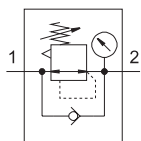
Inline, with/without pressure gauge



- - Standard nominal flow rate
80 ... 130 l/min



L-shape, with pressure gauge



- - Standard nominal flow rate
80 ... 130 l/min



General technical data

| | | | | | | | | | | |
|----------------------------------|-------|---|------|------|---------------------|--|------------------|------------|-----------------|-----------------|
| Pneumatic connection 1 | | QS-4 | QS-6 | QS-8 | QS-1/4 | M5 | R1/8 | R1/4 | 1/8 NPT | 1/4 NPT |
| Pneumatic connection 2 | | QS-4 | QS-6 | QS-8 | QS-1/4 | QS-4, QS-6 | QS-4, QS-6, QS-8 | QS-6, QS-8 | QS-1/4, QS-5/16 | QS-1/4, QS-5/16 |
| Controller function | | Outlet pressure constant, with secondary venting, with return flow action | | | | | | | | |
| Pressure regulation range | [MPa] | 0.1 ... 0.8 | | | - | 0.1 ... 0.8 | | | - | |
| | [psi] | - | | | 14.5 ... 116 | - | | | 14.5 ... 116 | |
| Actuation type | | Manual | | | | | | | | |
| Mounting position | | Optional | | | | | | | | |
| Adjusting element | | Rotary knob with detent | | | | | | | | |
| Pressure indicator | | With/without pressure gauge | | | With pressure gauge | | | | | |
| Type of mounting | | With through-hole | | | | Screw-in | | | | |
| Type of seal on screwed trunnion | | - | | | | Sealing ring | Coating | | | |
| Rotatability | | - | | | | 360°/continuous rotation not permitted | | | | |
| Nominal tightening torque | [Nm] | - | | | | 0.8 ±20% | | - | | |

Operating and environmental conditions

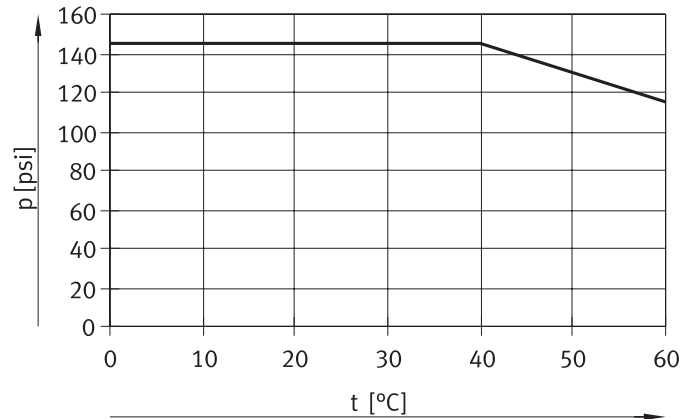
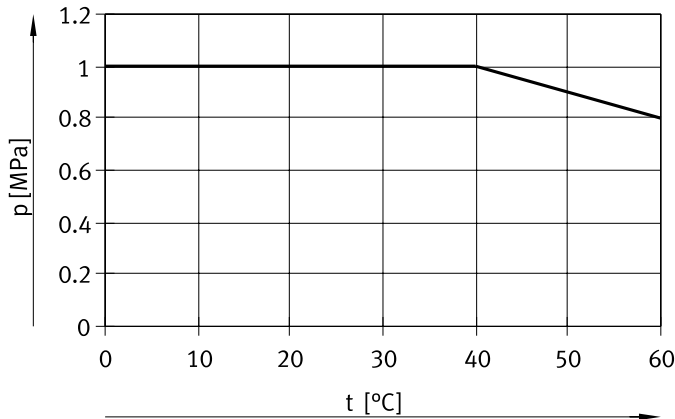
| | | |
|------------------------------------|------|--|
| Operating pressure | | See graph → page 5 |
| Operating medium | | Compressed air to ISO 8573-1:2010 [7:4:4] |
| Note on the operating/pilot medium | | Lubricated operation possible (in which case lubricated operation will always be required) |
| Ambient temperature | [°C] | 0 ... +60 |

Materials

| | | | | | | | | | | |
|------------------------|--|----------------|------|------|--------|---------------------|------|------|---------|---------|
| Pneumatic connection 1 | | QS-4 | QS-6 | QS-8 | QS-1/4 | M5 | R1/8 | R1/4 | 1/8 NPT | 1/4 NPT |
| Housing | | PBT | | | | PBT | | | | |
| Screwed trunnion | | - | | | | Nickel-plated brass | | | | |
| Threaded seal | | - | | | | - | | PTFE | | |
| Static seals | | NBR | | | | NBR | | | | |
| Note on materials | | RoHS-compliant | | | | RoHS-compliant | | | | |

Data sheet

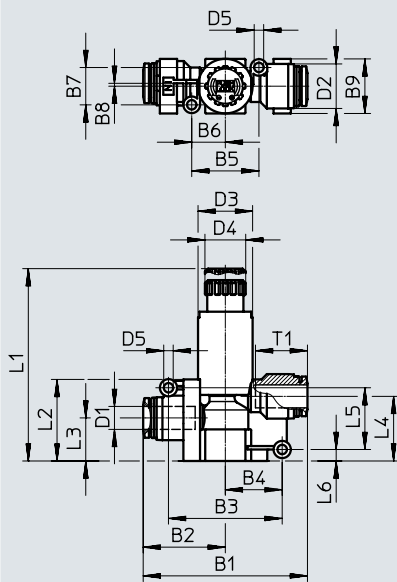
Operating pressure p as a function of temperature t



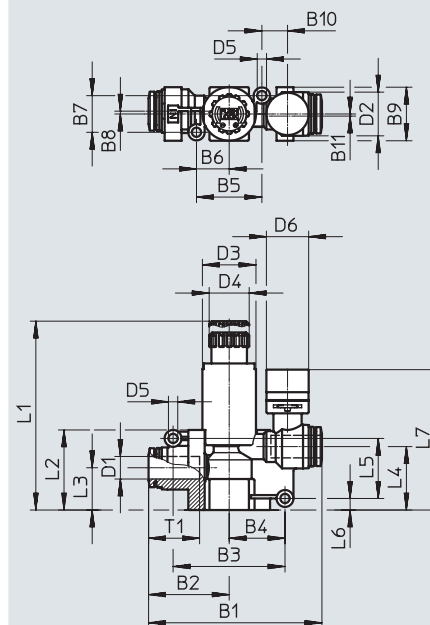
Dimensions – Inline

Download CAD data → www.festo.com

VRPA-C, without pressure gauge



VRPA-CM, with pressure gauge



| Type | B1 | B2 | B3 | B4 | B5 | B6 | B7 | B8 | B9 | B10 | B11 | D1 ∅ | D2 ∅ |
|---------------|------|------|------|------|------|------|----|----|----|------|-----|---------|---------|
| VRPA-C-Q4-E | 44.4 | 22.2 | 30 | 15 | 20.6 | 10.3 | 9 | 1 | 15 | - | - | 4 | 11.5 |
| VRPA-C-Q6-E | 44.6 | 22.3 | 30 | 15 | 20.6 | 10.3 | 9 | 1 | 15 | - | - | 6 | 11.5 |
| VRPA-C-Q8-E | 57.2 | 28.6 | 39.6 | 19.8 | 23.4 | 11.7 | 13 | 1 | 19 | - | - | 8 | 15.5 |
| VRPA-CM-Q4-E | 53.4 | 22.2 | 30 | 15 | 20.2 | 10.1 | 9 | 1 | 15 | 10.2 | 1 | 4 | 11.5 |
| VRPA-CM-Q6-E | 53.6 | 22.3 | 30 | 15 | 20.2 | 10.1 | 9 | 1 | 15 | 10.2 | 1 | 6 | 11.5 |
| VRPA-CM-Q8-E | 61.5 | 28.6 | 39.7 | 19.9 | 23.2 | 11.6 | 13 | 1 | 19 | 9.1 | 0 | 8 | 15.5 |
| VRPA-CM-T14-E | 54 | 22.5 | 30 | 15 | 20.2 | 10.1 | 9 | 1 | 15 | 10.2 | 1 | 1/4 | 11.5 |

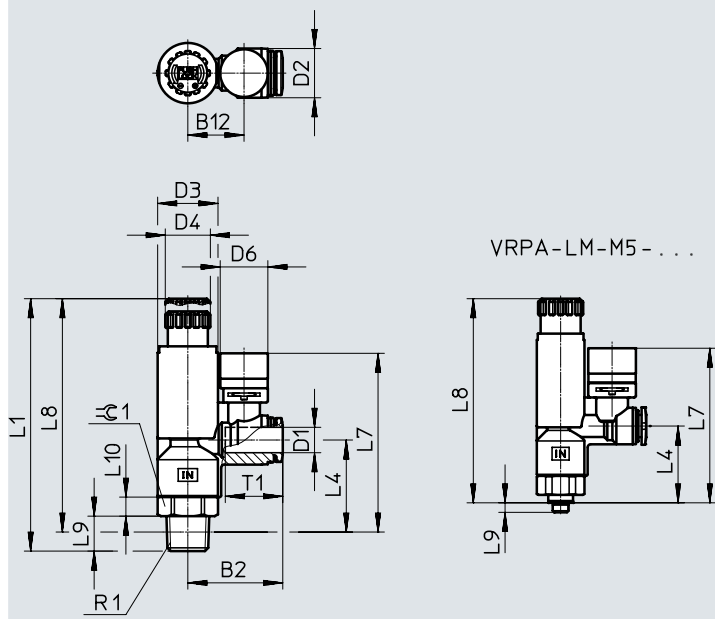
| Type | D3 ∅ | D4 ∅ | D5 ∅ | D6 ∅ | L1 | | L2 | L3 | L4 | L5 | L6 | L7 | T1 |
|---------------|---------|---------|---------|---------|----------|--------|------|----|------|------|-----|------|------|
| | | | | | Unlocked | Locked | | | | | | | |
| VRPA-C-Q4-E | 15 | 14.2 | 3.3 | - | 61.6 | 58.9 | 24.5 | 13 | 18.8 | 17 | 4.2 | - | 11.6 |
| VRPA-C-Q6-E | 15 | 14.2 | 3.3 | - | 61.6 | 58.9 | 24.5 | 13 | 18.8 | 17 | 4.2 | - | 11.9 |
| VRPA-C-Q8-E | 19 | 14.2 | 3.3 | - | 65.7 | 63 | 28.4 | 15 | 22.5 | 21.5 | 4 | - | 18.1 |
| VRPA-CM-Q4-E | 15 | 14.2 | 3.3 | 15 | 61.6 | 58.9 | 24.5 | 13 | 18.8 | 17 | 4.2 | 43.3 | 11.6 |
| VRPA-CM-Q6-E | 15 | 14.2 | 3.3 | 15 | 61.6 | 58.9 | 24.5 | 13 | 18.8 | 17 | 4.2 | 43.3 | 11.9 |
| VRPA-CM-Q8-E | 19 | 14.2 | 3.3 | 15 | 65.7 | 63 | 28.4 | 15 | 22.5 | 21.3 | 4.1 | 49.8 | 18.1 |
| VRPA-CM-T14-E | 15 | 14.2 | 3.3 | 15 | 61.6 | 58.9 | 24.5 | 13 | 18.8 | 17 | 4.2 | 43.3 | 11.7 |

Data sheet

Dimensions – L-shape

Download CAD data → www.festo.com

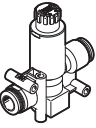
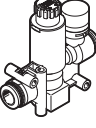
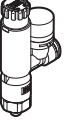
VRPA-LM, with pressure gauge



| Type | B2 | B12 | D1 ∅ | D2 ∅ | D3 ∅ | D4 ∅ | D6 ∅ |
|------------------|------|------|---------|---------|---------|---------|---------|
| VRPA-LM-M5-Q4 | 26.9 | 16.2 | 4 | 11.5 | 15 | 14.2 | 15 |
| VRPA-LM-M5-Q6 | 27 | 16.2 | 6 | 11.5 | 15 | 14.2 | 15 |
| VRPA-LM-R18-Q4 | 26.9 | 16.2 | 4 | 11.5 | 15 | 14.2 | 15 |
| VRPA-LM-R18-Q6 | 27 | 16.2 | 6 | 11.5 | 15 | 14.2 | 15 |
| VRPA-LM-R18-Q8 | 28.4 | 16.2 | 8 | 15.5 | 15 | 14.2 | 15 |
| VRPA-LM-R14-Q6 | 30 | 17.7 | 6 | 15.5 | 19 | 14.2 | 15 |
| VRPA-LM-R14-Q8 | 29.9 | 17.7 | 8 | 15.5 | 19 | 14.2 | 15 |
| VRPA-LM-N18-T14 | 27.2 | 16.2 | 1/4 | 11.5 | 15 | 14.2 | 15 |
| VRPA-LM-N18-T516 | 28.4 | 16.2 | 5/16 | 15.5 | 15 | 14.2 | 15 |
| VRPA-LM-N14-T14 | 30 | 17.7 | 1/4 | 15.5 | 19 | 14.2 | 15 |
| VRPA-LM-N14-T516 | 29.9 | 17.7 | 5/16 | 15.5 | 19 | 14.2 | 15 |

| Type | L1 | | L4 | L7 | L8 | | L9 | L10 | R1 | T1 | ≈ 1 |
|------------------|----------|--------|------|------|----------|--------|----|-----|--------|------|-------|
| | Unlocked | Locked | | | Unlocked | Locked | | | | | |
| VRPA-LM-M5-Q4 | 70 | 67.3 | 24.2 | 48.7 | 66.8 | 64.3 | 3 | 6 | M5x0.8 | 11.6 | 14 |
| VRPA-LM-M5-Q6 | 70 | 67.3 | 24.2 | 48.7 | 66.8 | 64.3 | 3 | 6 | M5x0.8 | 11.9 | 14 |
| VRPA-LM-R18-Q4 | 71.5 | 68.8 | 24.7 | 49.2 | 67.3 | 64.8 | 8 | 5 | R1/8 | 11.6 | 14 |
| VRPA-LM-R18-Q6 | 71.5 | 68.8 | 24.7 | 49.2 | 67.3 | 64.8 | 8 | 5 | R1/8 | 11.9 | 14 |
| VRPA-LM-R18-Q8 | 71.5 | 68.8 | 24.7 | 52 | 67.3 | 64.8 | 8 | 5 | R1/8 | 18.1 | 14 |
| VRPA-LM-R14-Q6 | 78.2 | 75.5 | 29 | 56.3 | 72 | 69.5 | 11 | 6 | R1/4 | 17 | 17 |
| VRPA-LM-R14-Q8 | 78.2 | 75.5 | 29 | 56.3 | 72 | 69.5 | 11 | 6 | R1/4 | 18.1 | 17 |
| VRPA-LM-N18-T14 | 71.5 | 68.8 | 24.6 | 49.1 | 67.2 | 64.7 | 8 | 5 | 1/8NPT | 11.7 | 9/16 |
| VRPA-LM-N18-T516 | 71.5 | 68.8 | 24.6 | 51.9 | 67.2 | 64.7 | 8 | 5 | 1/8NPT | 18.1 | 9/16 |
| VRPA-LM-N14-T14 | 78.2 | 75.5 | 29.2 | 56.5 | 72.2 | 69.7 | 11 | 6 | 1/4NPT | 17 | 11/16 |
| VRPA-LM-N14-T516 | 78.2 | 75.5 | 29.2 | 56.5 | 72.2 | 69.7 | 11 | 6 | 1/4NPT | 18.1 | 11/16 |

Data sheet

| Ordering data | | Pneumatic connection | | Standard nominal flow rate [l/min] | Weight [g] | Pressure gauge scale | | Part no. | Type |
|---|---------|----------------------|-----|---------------------------------------|---------------|----------------------|-------------------------|-------------------------|------|
| | | 1 | 2 | | | MPa | psi | | |
| Inline, without pressure gauge | | | | | | | | | |
|  | QS-4 | QS-4 | 80 | 19 | – | – | 8086000 | VRPA-C-Q4-E | |
| | QS-6 | QS-6 | 90 | 20 | – | – | 8086001 | VRPA-C-Q6-E | |
| | QS-8 | QS-8 | 130 | 33 | – | – | 8086002 | VRPA-C-Q8-E | |
| Inline, with pressure gauge | | | | | | | | | |
|  | QS-4 | QS-4 | 80 | 23 | ■ | – | 8086003 | VRPA-CM-Q4-E | |
| | QS-6 | QS-6 | 90 | 23 | ■ | – | 8086004 | VRPA-CM-Q6-E | |
| | QS-8 | QS-8 | 125 | 36 | ■ | – | 8086005 | VRPA-CM-Q8-E | |
| | QS-1/4 | QS-1/4 | 95 | 23 | – | ■ | 8086006 | VRPA-CM-T14-E | |
| L-shape, with pressure gauge | | | | | | | | | |
|  | M5 | QS-4 | 80 | 29 | ■ | – | 8086007 | VRPA-LM-M5-Q4 | |
| | | QS-6 | 90 | 29 | ■ | – | 8086008 | VRPA-LM-M5-Q6 | |
| | R1/8 | QS-4 | 90 | 29 | ■ | – | 8086009 | VRPA-LM-R18-Q4 | |
| | | QS-6 | 100 | 29 | ■ | – | 8086010 | VRPA-LM-R18-Q6 | |
| | | QS-8 | 110 | 31 | ■ | – | 8086011 | VRPA-LM-R18-Q8 | |
| | R1/4 | QS-6 | 115 | 49 | ■ | – | 8086012 | VRPA-LM-R14-Q6 | |
| | | QS-8 | 130 | 49 | ■ | – | 8086013 | VRPA-LM-R14-Q8 | |
| | 1/8 NPT | QS-1/4 | 110 | 29 | – | ■ | 8086014 | VRPA-LM-N18-T14 | |
| | | QS-5/16 | 130 | 32 | – | ■ | 8086015 | VRPA-LM-N18-T516 | |
| | 1/4 NPT | QS-1/4 | 110 | 50 | – | ■ | 8086016 | VRPA-LM-N14-T14 | |
| QS-5/16 | | 130 | 50 | – | ■ | 8086017 | VRPA-LM-N14-T516 | | |

Festo - Your Partner in Automation



1 Festo Inc.
5300 Explorer Drive
Mississauga, ON L4W 5G4
Canada

Festo Customer Interaction Center
Tel: 1 877 463 3786
Fax: 1 877 393 3786
Email: customer.service.ca@festo.com

2 Festo Pneumatic
Av. Ceylán 3,
Col. Tequesquináhuac
54020 Tlalnepantla,
Estado de México

Multinational Contact Center
01 800 337 8669
ventas.mexico@festo.com

3 Festo Corporation
1377 Motor Parkway
Suite 310
Islandia, NY 11749

Festo Customer Interaction Center
1 800 993 3786
1 800 963 3786
customer.service.us@festo.com

4 Regional Service Center
7777 Columbia Road
Mason, OH 45040

Connect with us



www.festo.com/socialmedia



www.festo.com

Subject to change