

## Proportional directional control valves VPWS

**FESTO**





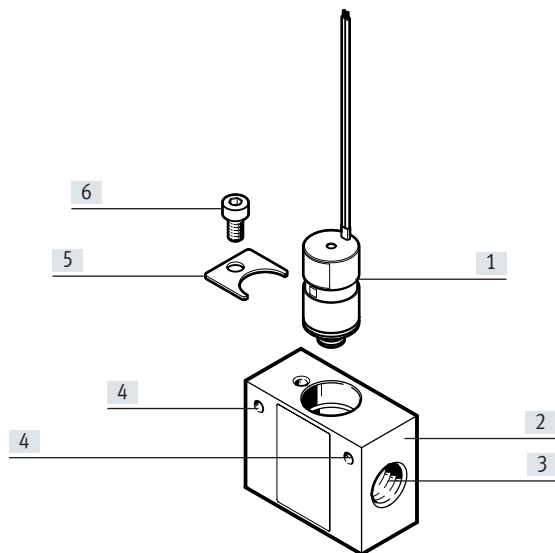
### Key features

#### General

The solenoid valves VPWS are proportional directional control valves. This means that the flow rate of suitable media can be controlled proportionally. Approved operating media include air, oxygen and inert gases.

The solenoid valve VPWS should only be operated within the limits defined in the technical data. The specific on-site operating conditions are to be observed.

#### Overview of valve with manifold block



- [1] Solenoid valve VPWS
- [2] Manifold block
- [3] Pneumatic connection
- [4] Mounting hole for M3 screws
- [5] Mounting
- [6] Socket head screw M4

#### Note

The product has no redundancy and no error detection. When malfunctions need to be detected, this must be done by implementing the necessary measures in the customer product.



## Type codes

001	Series	
VPWS	Proportional directional control valve	

002	Nominal width [mm]	
1.5	1.5	
2.2	2.2	
6	6	

003	Directional control valve type	
B	Sub-base valve	

004	Valve function	
6	2/2-way valve, normally closed	




005	Pneumatic connection	
PC15	Cartridge 15 mm	

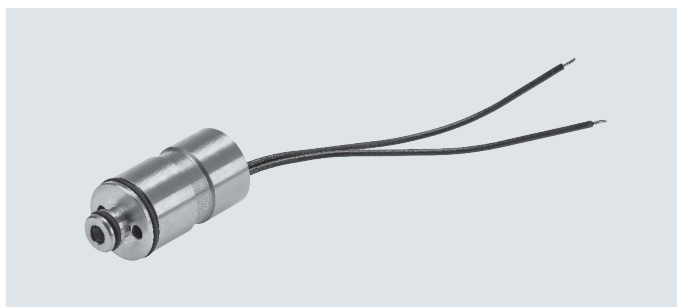
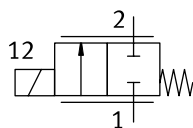
006	Pressure range [bar]	
3	0 ... 3	
8	0 ... 8	

007	Sealant	
V	FPM	



## Technical data

-  Flow rate  
46 ... 220 l/min
-  Diameter of cartridge  
7.5 ... 15 mm
-  Voltage  
≤19 ... 19.9 V DC



## General technical data

Nominal width DN	1.5 mm	2.2 mm	6 mm
Valve function	2/2-way proportional directional control valve, closed		
Reset method	Mechanical spring		
Design	Directly actuated poppet valve		
Sealing principle	Soft		
Actuation type	Electrical		
Type of control	Direct		
Direction of flow	Not reversible		
Mounting position	Any		
Type of mounting	On sub-base		
	Plug-in		
	With accessories		
Pneumatic connection 1	Cartridge 15 mm		Cartridge 7.5 mm
Pneumatic connection 2	Cartridge 7.2 mm		Cartridge 15 mm
Flow rate q	[l/min]	82 ... 98	46 ... 56
Product weight	[g]	23	25
Degree of protection to EN 60529	IP60		
Note on degree of protection	IP65 with suitable plug		
	In assembled state		

## Operating and environmental conditions

Operating and environmental conditions		1.5 mm	2.2 mm	6 mm
Nominal width DN				
Medium		Inert gases		
		Air		
		Oxygen		
Note on the medium		Lubricated operation not possible		
Note on the medium, maximum particle size	[μm]	10		
Operating pressure	[MPa]	0 ... 0.8	0 ... 0.3	
	[bar]	0 ... 8	0 ... 3	
Nominal operating pressure	[MPa]	0 ... 0.8	0.3	0.2
	[bar]	8	3	2
	[psi]	116	43.5	29
Ambient temperature	[°C]	+5 ... +50		
Temperature of medium	[°C]	+5 ... +50		
Storage temperature	[°C]	−40 ... +80		
Corrosion resistance class CRC <sup>1)</sup>		1		

1) Corrosion resistance class CRC 1 to Festo standard FN 940070

Low corrosion stress. Dry indoor application or transport and storage protection. Also applies to parts behind covers, in the non-visible interior area, and parts which are covered in the application (e.g. drive trunnions).



## Technical data

Electrical data			
Nominal width DN		1.5 mm	2.2 mm
Continuous operating voltage at 20°C without inflow	[V DC]	≤ 16.5	
Continuous operating voltage at 50°C without inflow	[V DC]	≤ 14.5	
Typical continuous operating voltage at 50 °C with inflow	[V DC]	≤ 19.0	
Max. switching frequency	[Hz]	18	
Hysteresis	[mA]	16	
Coil resistance	[Ω]	60.5	
Max. electrical power consumption	[W]	2.5	
Current regulating range	[mA]	0 ... 200	
Duty cycle ED	[%]	100 (see assembly instructions)	

Nominal width DN		6 mm	
		Air	Oxygen
Continuous operating voltage at 20°C without inflow	[V DC]	≤ 14.5	≤ 11.4
Continuous operating voltage at 50°C without inflow	[V DC]	≤ 13.3	≤ 9.6
Typical continuous operating voltage at 50°C with inflow (≥ 30 l/min)	[V DC]	≤ 19.9	
Switching time on	[ms]	10	
Hysteresis	[mA]	22.5	
Coil resistance	[Ω]	60.5	
Max. electrical power consumption	[W]	3	
Current regulating range	[mA]	0 ... 225	
Duty cycle ED	[%]	100 (see assembly instructions)	

Electrical connection			
Electrical connection	Connection technology	Open end	
	Number of pins/wires	2	
	Connection type	Cable	
Cable length	[mm]	70 ... 80	

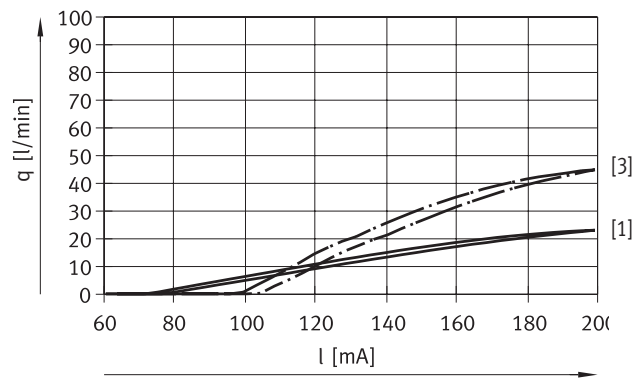
Materials	
Housing	High-alloy steel
Seals	FPM
Note on materials	RoHS-compliant
PWIS conformity	VDMA24364-Zone III



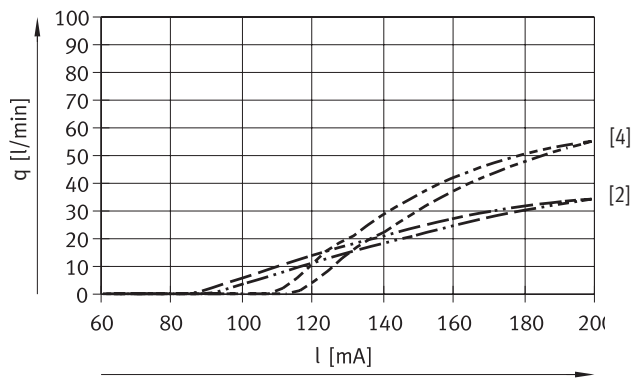
Technical data

Flow rate/current characteristic curves

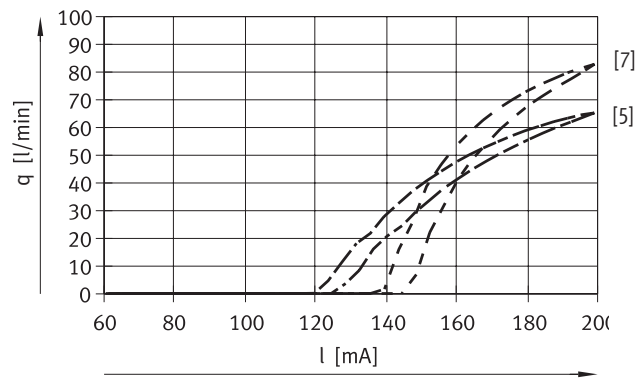
Nominal width 1.5 mm



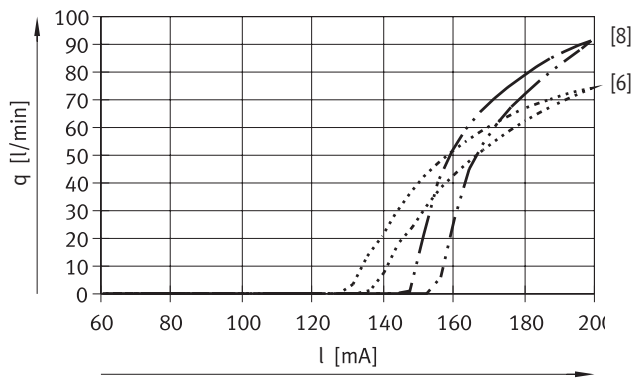
[1] Characteristic curve for 1 bar [3] Characteristic curve for 3 bar




[2] Characteristic curve for 2 bar [4] Characteristic curve for 4 bar



[5] Characteristic curve for 5 bar [7] Characteristic curve for 7 bar



[6] Characteristic curve for 6 bar [8] Characteristic curve for 8 bar

 **Note**

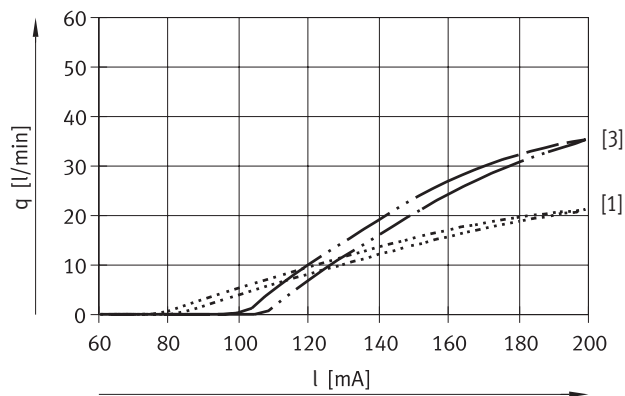
Resonance may occur during operation at a low frequency and this may affect the flow rate. Operation at very low flow rates may generate noise. No resonance occurs during operation at a frequency of 0.3 Hz or higher.



## Technical data

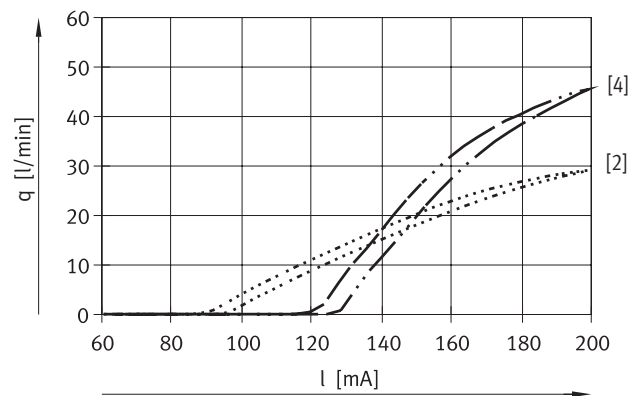
## Flow rate/current characteristic curves

Nominal width 2.2 mm



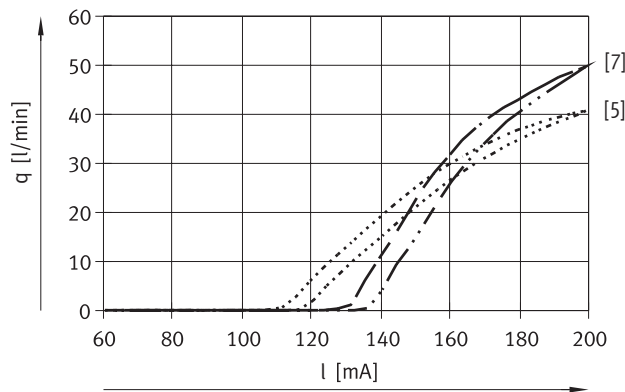
[1] Characteristic curve for 0.5 bar

[3] Characteristic curve for 1.5 bar



[2] Characteristic curve for 1.0 bar

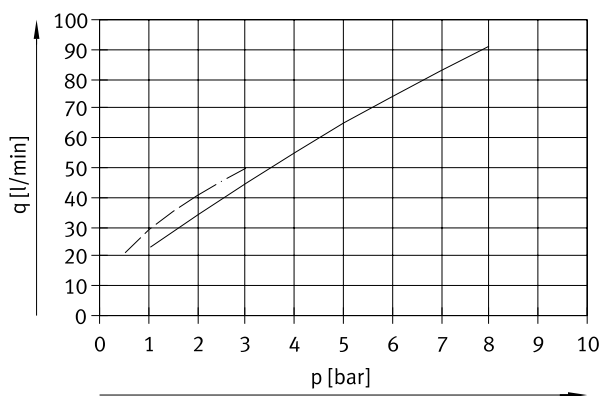
[4] Characteristic curve for 2.5 bar



[5] Characteristic curve for 2.0 bar

[7] Characteristic curve for 3.0 bar

## Flow rate/pressure characteristic curve at 200 mA



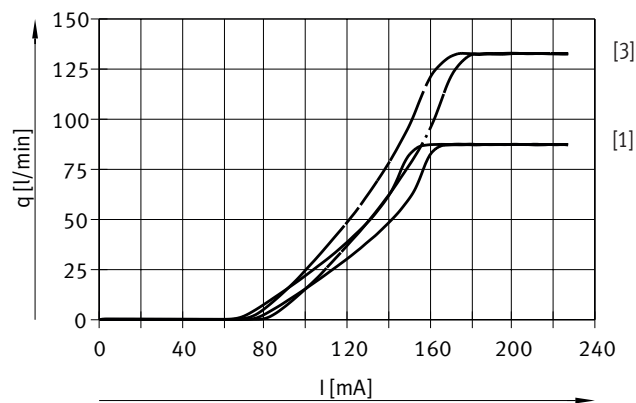
— VPWS-DN 1.5  
 - - - VPWS-DN 2.2



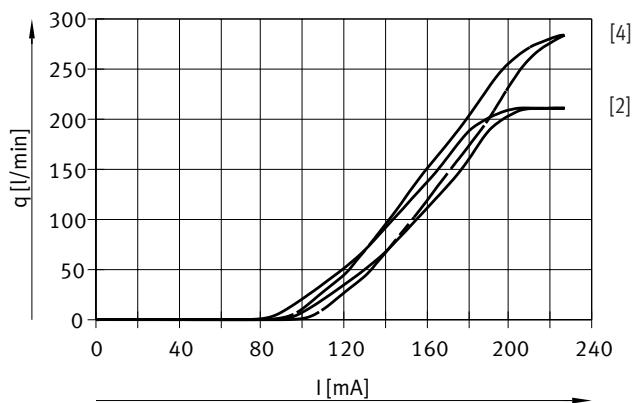
Technical data

Flow rate/current characteristic curves

Nominal width 6 mm

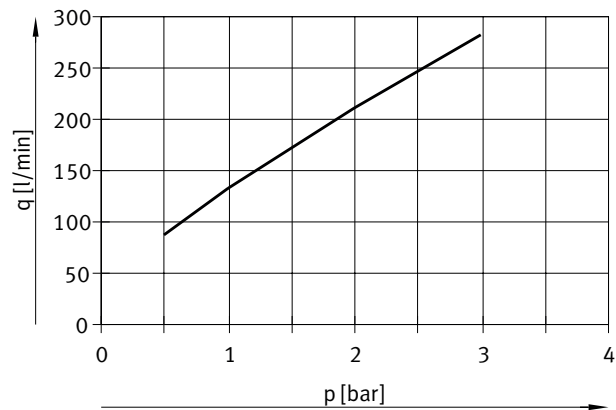


[1] Characteristic curve for 0.5 bar      [3] Characteristic curve for 1 bar



[2] Characteristic curve for 2 bar      [4] Characteristic curve for 3 bar

Flow rate/pressure characteristic curve at 225 mA



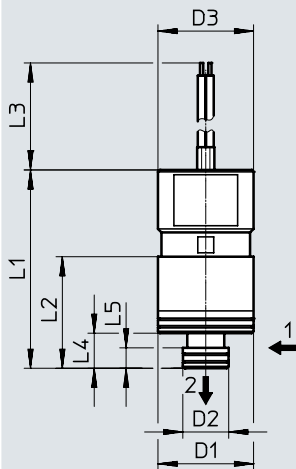


## Technical data

## Dimensions

Download CAD data → [www.festo.com](http://www.festo.com)

Proportional directional control valve



[1] Pneumatic connection 1  
(with VPWS-6 as connection 2)

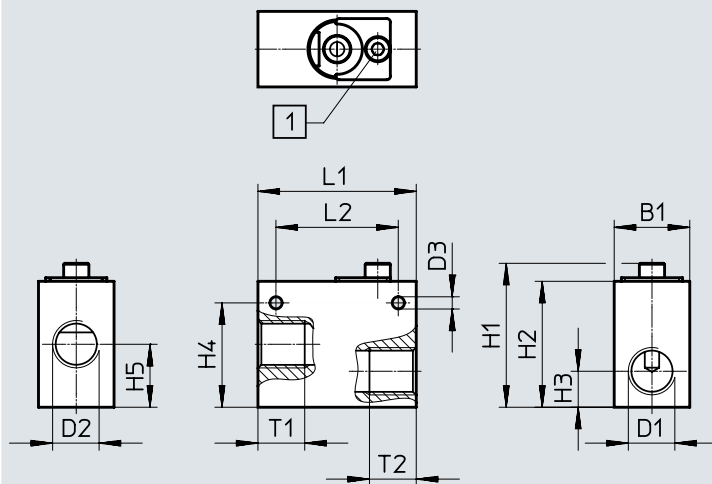
[2] Pneumatic connection 2  
(with VPWS-6 as connection 1)

Type	D1 ø	D2 ø	D3 ø	L1	L2	L3	L4	L5
VPWS-1.5-B-6-PC15-8-V	15	7.2	15	31	17.5	70 ... 80	5.5	3.2
VPWS-2.2-B-6-PC15-3-V	15	7.2	15	31	17.5	70 ... 80	5.5	3.2
VPWS-6-B-6-PC15-3-V	15	7.5	15	36.4	22.9	70 ... 80	7.23	2.9

## Dimensions

Download CAD data → [www.festo.com](http://www.festo.com)

Manifold block



[1] Socket head screw M4X8

Type	B1	D1	D2	D3 ø	H1	H2	H3	H4	H5	L1	L2	T1	T2
VABS-P4-10S-G14	21	G1/4	G1/4	3.4	40	35	10	29	17.5	44	34	13	13
VABS-P4-20S-G38	25	G3/8	G3/8	3.4	47	42	11.5	36	19	44	34	13	13

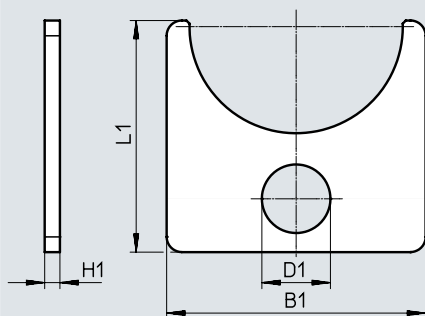


## Technical data

## Dimensions

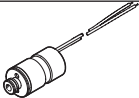
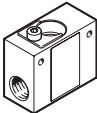

Download CAD data → [www.festo.com](http://www.festo.com)

## Mounting



Type	B1	D1	H1	L1
VAME-P4-PC15-P-P10	17	4.5	1	15.2

## Ordering data

Ordering data			Part No.	Type	PJ <sup>1)</sup>
Proportional directional control valve					
	2/2-way proportional directional control valve, closed	Nominal width 1.5 mm	8074075	VPWS-1.5-B-6-PC15-8-V	1
		Nominal width 2.2 mm	8074074	VPWS-2.2-B-6-PC15-3-V	1
		Nominal width 6 mm	8074537	VPWS-6-B-6-PC15-3-V	1
Manifold block					
	Suitable for proportional directional control valves with nominal width 1.5 and 2.2 mm Set for 2/2-way proportional directional control valve VPWS, comprising: <ul style="list-style-type: none"><li>Manifold block VABS-P4-10S-G14</li><li>1 mounting component from the set VAME-P4-PC15-P-P10</li><li>Socket head screw M4x8</li></ul>		8087327	VABS-P4-10S-G14	1
	Suitable for proportional directional control valve with nominal width 6 mm Set for 2/2-way proportional directional control valve VPWS, comprising: <ul style="list-style-type: none"><li>Manifold block VABS-P4-20S-G38</li><li>1 mounting component from the set VAME-P4-PC15-P-P10</li><li>Socket head screw M4x8</li></ul>		8087328	VABS-P4-20S-G38	1
Mounting					
	For 2/2-way proportional directional control valve VPWS in manifold block VABS (set comprises 10 mountings for 10 proportional directional control valves VPWS)		8087347	VAME-P4-PC15-P-P10	1

1) Packaging unit.



Festo - Your Partner in Automation



**1 Festo Inc.**  
5300 Explorer Drive  
Mississauga, ON L4W 5G4  
Canada

**Festo Customer Interaction Center**  
Tel: 1 877 463 3786  
Fax: 1 877 393 3786  
Email: customer.service.ca@festo.com



**2 Festo Pneumatic**  
Av. Ceylán 3,  
Col. Tequesquináhuac  
54020 Tlalnepantla,  
Estado de México

**Multinational Contact Center**  
01 800 337 8669  
ventas.mexico@festo.com



**3 Festo Corporation**  
1377 Motor Parkway  
Suite 310  
Islandia, NY 11749

**Festo Customer Interaction Center**  
1 800 993 3786  
1 800 963 3786  
customer.service.us@festo.com



**4 Regional Service Center**  
7777 Columbia Road  
Mason, OH 45040

Connect with us

[www.festo.com/socialmedia](http://www.festo.com/socialmedia)



[www.festo.com](http://www.festo.com)

Subject to change