

Type codes

001	Series	
NEBV	Connecting cable for valves	

002	Product version	
	Standard	
C	Easy-to-clean design	

003	Connection technology left, field device side	
A1	Socket type A, EN 175301-803	
B2	Socket type B, industry standard, 11 mm	
C1S	Socket type C, narrow design	
Z4	Socket connection pattern ZC, metric screw	
Z3	Socket connection pattern ZC, self-tapping screw	
M8	Socket M8x1 A-coded, EN 61076-2-104	
M12	Socket M12x1 A-coded, EN 61076-2-101	
S1	Sub-D socket	
S7	Sub-D HD socket	
H1	Socket connection pattern H	
Q7	Port pattern Q7 socket	
HS	Socket connection pattern S	

004	Cable outlet left	
	None	
G	Straight	
W	Angled	
WA	Angled 45°	

005	Number of pins/wires on the left	
2	2	
3	3	
4	4	
8	8	
9	9	
15	15	
25	25	
37	37	
44	44	

006	Display	
	None	
F	LED signal status, AC	
L	LED signal status, DC	
N	LED switching state, NPN	
P	LED switching state, PNP	
U	LED, UC	

007	Additional socket functions	
	None	
HL	Hood for MPA-L	
HM	Hood for MPA-S	
HS	With seal	

008	Circuitry	
	None	
P	Protective circuit	
R	Holding current reduction with integrated protective circuit	

009	Cable characteristic	
P	Basic	
K	Standard	
E	Suitable for energy chains	
F	Food-safe to standard	

010	Cable design	
	Standard	
M	Alternative material	
N	Leads	
D	Double cable	

011	Cable length [m]	
0.1	0.1	
0.2	0.2	
0.3	0.3	
0.5	0.5	
0.6	0.6	
1	1	
2	2	
2.5	2.5	
3	3	
5	5	
10	10	

012	Cable identification	
	With label holder	
N	Without label holder	

013	Connection technology right, controller side	
M8	Plug M8x1 A-coded, EN 61076-2-104	
M12	Plug M12x1 A-coded, EN 61076-2-101	
Z1	Port pattern ZB plug, self-tapping screw	
LE	Open end	

014	Plug	
	None	
G	Straight	
W	Angled	

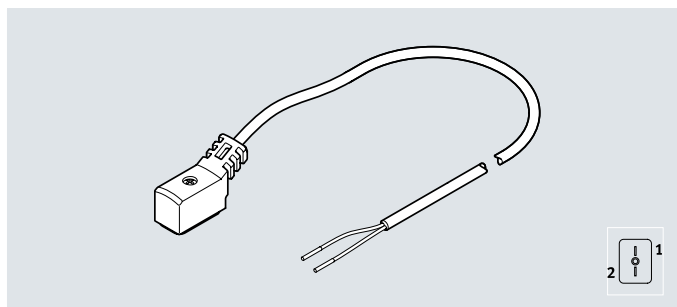
015	Number of pins/wires on the right	
2	2	
3	3	
4	4	
5	5	
10	10	
15	15	
25	25	
26	26	
27	27	
36	36	
37	37	
39	39	
44	44	

016	Degree of protection, electrical system	
	Standard	
S6	IP40	
S1	IP65	
S9	IP65/IP67	
S10	IP65/IP67/IP69K	

Datasheet

Connecting cable NEBV-Z3WA2L

- Connecting cable
- Pre-assembled at both ends
- For connecting valves



General technical data

Electrical connection 1

Function	Field device side
Connection type	Socket
Cable outlet	Angled
Design type	Rectangular
Connection technology	Plug pattern ZC, self-tapping screw
Number of pins/wires	2
Assigned pins/wires	2
Type of mounting	On solenoid valve via self-tapping screw
Signal status indication	Yellow LED
Additional functions	Holding current reduction, protective circuit

Electrical connection 2

Function	Controller side
Connection type	Cable
Connection technology	Open end
Number of pins/wires	2
Assigned pins/wires	2

Technical data – Electrics

Nominal operating voltage	[V DC]	24
Operating voltage range	[V DC]	20.4 ... 26.4
Surge resistance	[kV]	2.4
Pollution degree		3
Contact durability		50
Reverse polarity protection		Bipolar
Protective earth connection		Not provided

Technical data – Cable

Cable composition	[mm ²]	2x 0.14
Cable diameter	[mm]	2.9
Cable diameter tolerance	[%]	±0.1
Nominal conductor cross section	[mm ²]	0.14
Cable characteristic		Suitable for energy chains
Cable test conditions		Test conditions on request
Bending radius, flexible cable installation	[mm]	≥29
Cable designation		Without inscription label holder

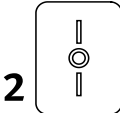
Datasheet

Materials	
Housing	TPE-U(PU)
Housing colour	Black
Insulating sheath	PP
Screws	Steel
Pin contacts	Tin-plated copper alloy
Cable sheath	TPE-U(PUR)
Cable sheath colour	Grey
Note on materials	RoHS-compliant
Operating and environmental conditions	
Ambient temperature [°C]	-10 ... +50
CE marking (see declaration of conformity) ²⁾	To EU EMC Directive ¹⁾
	To EU RoHS Directive
Degree of protection	IP65
Note on degree of protection	In assembled state

1) For information about the area of use, see the EC declaration of conformity at: www.festo.com/catalogue/NEBV → Support/Downloads.

If the devices are subject to usage restrictions in residential, commercial or light-industrial environments, further measures for the reduction of the emitted interference may be necessary.

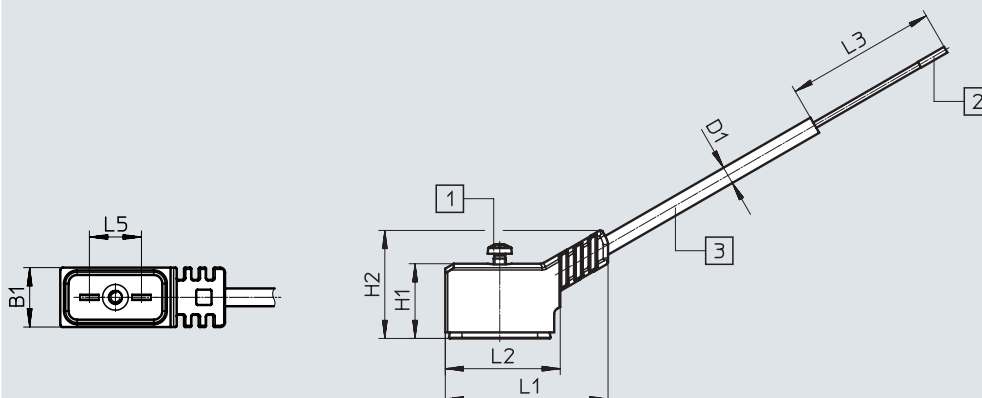
2) Additional information: www.festo.com/catalogue/NEBV → Support/Downloads.

Circuitry (socket/plug view)			
Electrical connection 1	Pin	Wire colour ¹⁾	Electrical connection 2
	1	BK	Open end
	2	BK	

1) To IEC 757

Dimensions

Download CAD data → www.festo.com



[1] Retaining screw

[2] Wire end sleeve

[3] Cable, length depending on the order

Type	B1	D1 Ø	H1	H2	L1	L2	L3	L5
NEBV-Z3WA2L	9.7	2.9	12	17.5	26.9	19	50	8.4

Datasheet

Ordering data					
Electrical connection	Cable length	Weight	Part no.	Type	
	[m]	[g]			
	Angled socket, plug pattern ZC, self-tapping screw	2.5	50	8047676	NEBV-Z3WA2L-R-E-2.5-N-LE2-S1
		5	90	8047677	NEBV-Z3WA2L-R-E-5-N-LE2-S1
		10	170	8047675	NEBV-Z3WA2L-R-E-10-N-LE2-S1

Ordering data – Modular product system

Ordering table		Conditions	Code	Enter code
Module no.	8003577			
Connecting cable	Connecting cables for valves		NEBV	NEBV
Connection technology on the left, field device side	Socket, plug pattern ZC, self-tapping screw		-Z3	-Z3
Cable outlet on the left	Angled 45°		WA	WA
Number of pins/wires on the left	2-pin		2	2
Display	Signal status LED		L	L
Circuitry	Holding current reduction with integrated protective circuit		-R	-R
Cable characteristic	Suitable for energy chains		-E	-E
Cable length	[m] 2.5		-2.5	
	[m] 5		-5	
	[m] 10		-10	
Cable designation	Without inscription label holder		-N	-N
Connection technology on the right, controller side	Open end		-LE	-LE
Number of pins/wires on the right	2-pin		2	2
Degree of protection, electrical system	IP65		-S1	-S1

Festo - Your Partner in Automation



1 Festo Inc.
5300 Explorer Drive
Mississauga, ON L4W 5G4
Canada

Festo Customer Interaction Center
Tel: 1 877 463 3786
Fax: 1 877 393 3786
Email: customer.service.ca@festo.com



2 Festo Pneumatic
Av. Ceylán 3,
Col. Tequesquináhuac
54020 Tlalneantla,
Estado de México

Multinational Contact Center
01 800 337 8669
ventas.mexico@festo.com



3 Festo Corporation
1377 Motor Parkway
Suite 310
Islandia, NY 11749

Festo Customer Interaction Center
1 800 993 3786
1 800 963 3786
customer.service.us@festo.com



4 Regional Service Center
7777 Columbia Road
Mason, OH 45040

Connect with us

www.festo.com/socialmedia



www.festo.com

Subject to change