

# Connecting cables, Sub-D, 25-pin

Technical data

**Connecting cable**  
**NEBV-S1G25**  
**NEBV-S1WA25**  
**NEBV-C-S1WA25**

- Connecting cable for multi-pin plug connection
- Pre-assembled
- Straight or angled socket
- Cable lengths 2.5 m, 5 m or 10 m
- 15 or 25 wires
- Sub-D, 25-pin



General technical data	
Electrical connection	Sub-D socket, 25-pin
	Open end
Type of mounting	4-40UNC

Technical data			
Type		NEBV-...-LE15	NEBV-...-LE25
Cable composition	[mm <sup>2</sup> ]	15 x 0.34	20 x 0.25
	[mm <sup>2</sup> ]	–	5 x 0.34
Cable diameter	[mm]	9	10.5
Cable characteristics		Standard	Standard
Min. cable bending radius	[mm]	90	105
Max. tightening torque plug connector	[Nm]	0.2	0.2
Nominal operating voltage	[V DC]	24	24
Degree of protection to EN 60529		IP65, IP67	IP65, IP67

Technical data				
Type		NEBV-...-LE25-S6	NEBV-...-LE25-S9	NEBV-...-LE25-S10
Mounting position		Any		
Cable composition	[mm <sup>2</sup> ]	25 x 0.34		
Cable diameter	[mm]	10.2		
Cable diameter tolerance	[mm]	±0.25		
Cable characteristic		For static applications		
Min. cable bending radius	[mm]	122		
Max. tightening torque plug connector		–	–	0.8
Operating voltage range	[V DC]	0 ... 30		
Acceptable current load at 40 °C	[A]	2.6		
Degree of protection to EN 60529		IP40	IP65, IP67	IP65, IP67, IP69K

# Connecting cables, Sub-D, 25-pin

Technical data

Materials		
Type	NEBV-...-LE15	NEBV-...-LE25
Housing	PBT	
Union nut	PA	
Seals	TPE-O	
Cable sheath	PVC	
Note on materials	RoHS-compliant	

Materials			
Type	NEBV-...-LE25-S6	NEBV-...-LE25-S9	NEBV-...-LE25-S10
Housing	Reinforced PC	PA66-GF30	Reinforced PC
Seals	-	-	EPDM
Pin contact	Gold-plated bronze		
Cable sheath	PVC		
Note on materials	RoHS-compliant		

Operating and environmental conditions		
Type	NEBV-...-LE15	NEBV-...-LE25
Ambient temperature with flexible cable installation	[°C] -5 ... +50	-5 ... +50

Operating and environmental conditions			
Type	NEBV-...-LE25-S6	NEBV-...-LE25-S9	NEBV-...-LE25-S10
Ambient temperature	[°C] -20 ... +80	-20 ... +80	-
Storage temperature	[°C] -	-	-20 ... +40
Degree of contamination	2	3	3

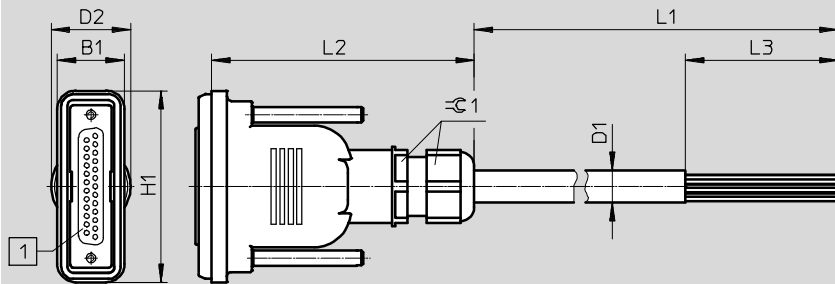
# Connecting cables, Sub-D, 25-pin

Technical data

FESTO

## Dimensions

Download CAD data → [www.festo.com](http://www.festo.com)

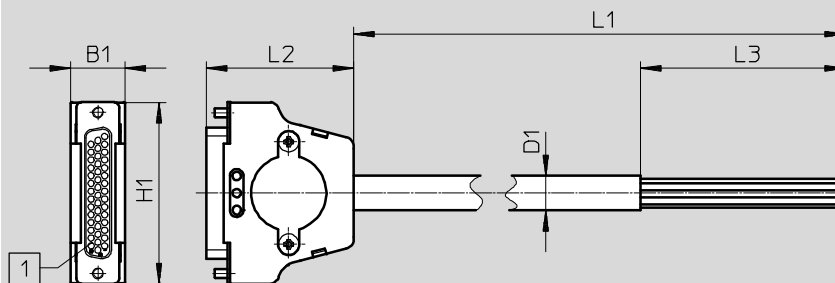


1 Sub-D socket, straight, 25-pin

Type	B1	D1 ∅	D2 ∅	H1	L1	L2	L3	≙1
NEBV-S1G25-K-2.5-N-LE15	22	9	26	62.8	2500	86±0.5	60	24
NEBV-S1G25-K-5-N-LE15					5000			
NEBV-S1G25-K-10-N-LE15					10,000			
NEBV-S1G25-K-2.5-N-LE25	22	10.4	26	62.8	2500	86±0.5	50	24
NEBV-S1G25-K-5-N-LE25					5000			
NEBV-S1G25-K-10-N-LE25					10,000			

## Dimensions

Download CAD data → [www.festo.com](http://www.festo.com)



1 Sub-D socket, straight, 25-pin

Type	B1	D1 ∅	H1	L1	L2	L3
NEBV-S1G25-K-2.5-N-LE25-S6	15.8	10.2	53	2500	43.1	60
NEBV-S1G25-K-5-N-LE25-S6				5000		
NEBV-S1G25-K-10-N-LE25-S6				10,000		

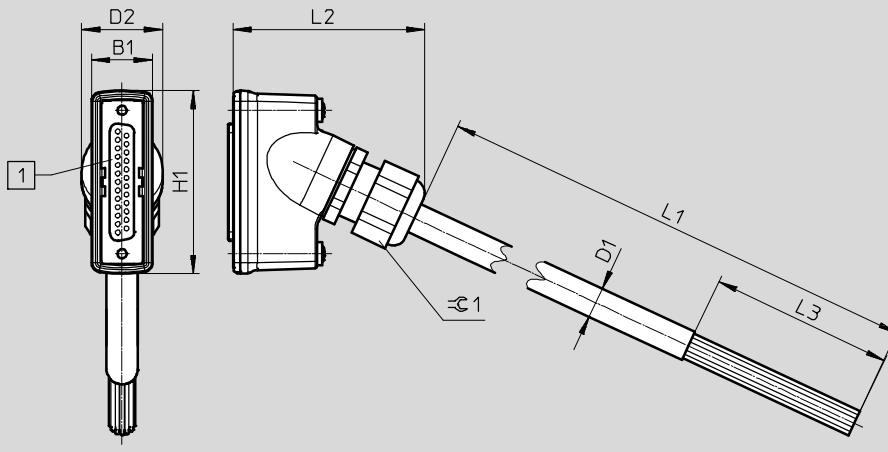
# Connecting cables, Sub-D, 25-pin

Technical data

FESTO

## Dimensions

Download CAD data → [www.festo.com](http://www.festo.com)



1 Sub-D socket, angled, 25-pin

Type	B1	D1 ∅	D2 ∅	H1	L1	L2	L3	≈C1
NEBV-S1WA25-K-2.5-N-LE25-S9	20	10.2	26.5	60	2500	60	60	24
NEBV-S1WA25-K-5-N-LE25-S9					5000			
NEBV-S1WA25-K-10-N-LE25-S9					10,000			
NEBV-C-S1WA25-F-2.5-N-LE25-S10	20	10.2	27	60	2500	60	60	-
NEBV-C-S1WA25-F-5-N-LE25-S10					5000			
NEBV-C-S1WA25-F-10-N-LE25-S10					10,000			

## Circuitry (socket view)

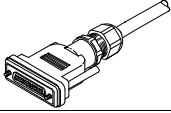
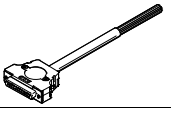
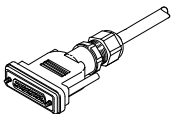
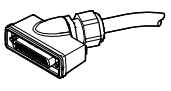
	Open end, 15-wire		Open end, 25-wire	
	Pin	Wire colour <sup>1)</sup>	Pin	Wire colour <sup>1)</sup>
	1	WH	1	WH
	2	BN	2	BN
	3	GN	3	GN
	4	YE	4	YE
	5	GY	5	GY
	6	PK	6	PK
	7	BU	7	BU
	8	RD	8	RD
	9	BK	9	BK
	10	VT	10	VT
	11	GY PK	11	GY PK
	12	RD BU	12	RD BU
	13	-	13	GN WH
	14	-	14	BN GN
	15	-	15	YE WH
	16	-	16	BN YE
	17	-	17	GY WH
	18	-	18	BN GY
	19	-	19	WH PK
	20	-	20	BN PK
	21	-	21	BU WH
	22	-	22	BN BU
	23	GN WH	23	RD WH
	24	BN GN	24	BN RD
	25	YE WH	25	BK WH

1) To IEC 757

# Connecting cables, Sub-D, 25-pin

Technical data

**FESTO**

Ordering data						
	Cable composition [mm <sup>2</sup> ]	Degree of protection	Weight [g]	Cable length [m]	Part No.	Type
<b>Straight socket – open end, 15-wire</b>						
	15 x 0.34	IP65, IP67	370	2.5	<b>538222</b>	<b>NEBV-S1G25-K-2.5-N-LE15</b>
			670	5	<b>538223</b>	<b>NEBV-S1G25-K-5-N-LE15</b>
			1270	10	<b>538224</b>	<b>NEBV-S1G25-K-10-N-LE15</b>
<b>Straight socket – open end, 25-wire</b>						
	25 x 0.34	IP40	429	2.5	<b>575417</b>	<b>NEBV-S1G25-K-2.5-N-LE25-S6</b>
			777	5	<b>575418</b>	<b>NEBV-S1G25-K-5-N-LE25-S6</b>
			1572	10	<b>575419</b>	<b>NEBV-S1G25-K-10-N-LE25-S6</b>
	20 x 0.25 5 x 0.34	IP65, IP67	490	2.5	<b>538225</b>	<b>NEBV-S1G25-K-2.5-N-LE25</b>
			910	5	<b>538226</b>	<b>NEBV-S1G25-K-5-N-LE25</b>
			1750	10	<b>538227</b>	<b>NEBV-S1G25-K-10-N-LE25</b>
<b>Angled socket – open end, 25-wire</b>						
	25 x 0.34	IP65, IP67	500	2.5	<b>575423</b>	<b>NEBV-S1WA25-K-2.5-N-LE25-S9</b>
			900	5	<b>575424</b>	<b>NEBV-S1WA25-K-5-N-LE25-S9</b>
			1800	10	<b>575425</b>	<b>NEBV-S1WA25-K-10-N-LE25-S9</b>
		IP65, IP67, IP69K	500	2.5	<b>2265131</b>	<b>NEBV-C-S1WA25-F-2.5-N-LE25-S10</b>
			900	5	<b>2265132</b>	<b>NEBV-C-S1WA25-F-5-N-LE25-S10</b>
			1800	10	<b>2265133</b>	<b>NEBV-C-S1WA25-F-10-N-LE25-S10</b>

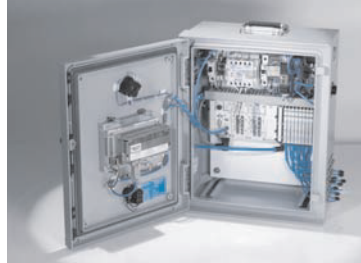
## Product Range and Company Overview

### A Complete Suite and Company Overview

Our experienced engineers provide complete support at every stage of your development process, including: conceptualization, analysis, engineering, design, assembly, documentation, validation, and production.



**Custom Automation Components**  
Complete custom engineered solutions



**Custom Control Cabinets**  
Comprehensive engineering support and on-site services



**Complete Systems**  
Shipment, stocking and storage services

### The Broadest Range of Automation Components

With a comprehensive line of more than 30,000 automation components, Festo is capable of solving the most complex automation requirements.



**Electromechanical**  
Electromechanical actuators, motors, controllers & drivers



**Pneumatics**  
Pneumatic linear and rotary actuators, valves, and air supply



**PLCs and I/O Devices**  
PLC's, operator interfaces, sensors and I/O devices

### Supporting Advanced Automation... As No One Else Can!

Festo is a leading global manufacturer of pneumatic and electromechanical systems, components and controls for industrial automation, with more than 16,000 employees in 60 national headquarters serving more than 180 countries. For more than 80 years, Festo has continuously elevated the state of manufacturing with innovations and optimized motion control solutions that deliver higher performing, more profitable automated manufacturing and processing equipment. Our dedication to the advancement of automation extends beyond technology to the education and development of current and future automation and robotics designers with simulation tools, teaching programs, and on-site services.

### Quality Assurance, ISO 9001 and ISO 14001 Certifications

Festo Corporation is committed to supply all Festo products and services that will meet or exceed our customers' requirements in product quality, delivery, customer service and satisfaction.

To meet this commitment, we strive to ensure a consistent, integrated, and systematic approach to management that will meet or exceed the requirements of the ISO 9001 standard for Quality Management and the ISO 14001 standard for Environmental Management.



© Copyright 2013, Festo Corporation. While every effort is made to ensure that all dimensions and specifications are correct, Festo cannot guarantee that publications are completely free of any error, in particular typing or printing errors. Accordingly, Festo cannot be held responsible for the same. For Liability and Warranty conditions, refer to our "Terms and Conditions of Sale", available from your local Festo office. All rights reserved. No part of this publication may be reproduced, distributed, or transmitted in any form or by any means, electronic, mechanical, photocopying or otherwise, without the prior written permission of Festo. All technical data subject to change according to technical update.



Printed on recycled paper at New Horizon Graphic, Inc., FSC certified as an environmental friendly printing plant.

# Festo North America



**1 Festo Canada  
Headquarters  
Festo Inc.**  
5300 Explorer Drive  
Mississauga, ON  
L4W 5G4

**2 Montréal**  
5600, Trans-Canada  
Pointe-Claire, QC  
H9R 1B6

**3 Québec City**  
2930, rue Watt#117  
Québec, QC  
G1X 4G3



**4 Festo United States  
Headquarters  
Festo Corporation**  
395 Moreland Road  
Hauppauge, NY  
11788

**5 Appleton**  
North 922 Tower View Drive, Suite N  
Greenville, WI  
54942

**7 Detroit**  
1441 West Long Lake Road  
Troy, MI  
48098

**6 Chicago**  
85 W Algonquin - Suite 340  
Arlington Heights, IL  
60005

**8 Silicon Valley**  
4935 Southfront Road, Suite F  
Livermore, CA  
94550

## Festo Regional Contact Center

### Canadian Customers

Commercial Support:  
Tel: 1 877 GO FESTO (1 877 463 3786)  
Fax: 1 877 FX FESTO (1 877 393 3786)  
Email: festo.canada@ca.festo.com

Technical Support:  
Tel: 1 866 GO FESTO (1 866 463 3786)  
Fax: 1 877 FX FESTO (1 877 393 3786)  
Email: technical.support@ca.festo.com

### USA Customers

Commercial Support:  
Tel: 1 800 99 FESTO (1 800 993 3786)  
Fax: 1 800 96 FESTO (1 800 963 3786)  
Email: customer.service@us.festo.com

Technical Support:  
Tel: 1 866 GO FESTO (1 866 463 3786)  
Fax: 1 800 96 FESTO (1 800 963 3786)  
Email: product.support@us.festo.com

Subject to change

Internet: [www.festo.com/us](http://www.festo.com/us)