

On/off valves MS-EE-B

FESTO



Festo Core Range
Solves the majority of your automation tasks

Worldwide:
Simply good:
Fast:

Quickest delivery – wherever, whenever
Expected high Festo quality
Easy and fast to select

With the Festo Core Range, we have selected the most important products and functions from our broad product catalogue, and added the quickest delivery.

The Core Range offers you the best value for your automation tasks.

Just look
for the
star!

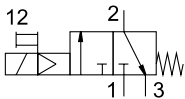
Key features

At a glance

Very compact and extremely lightweight series for use close to the process directly in the machine

- Grid dimension 40 mm
- With solenoid coil, without plug socket
- Supply voltage: 24 V DC

Function



- Solenoid actuated on/off valve for pressurising and exhausting pneumatic systems
- Ducted exhaust possible via a threaded connection
- Detenting and non-detenting manual override

Pneumatic connection

Individual fittings which are mounted via a female thread

Type codes

001	Series		004	Pneumatic connection	
MS	MS series		1/4	Female thread G1/4	
002	Size		005	Supply voltage	
4	Grid dimension 40 mm		V24	24 V DC (connection pattern to EN 175301)	
003	Function		006	Version	
EE	On/off valve, electric		B	Basic	

This exploded view diagram illustrates the assembly of a washing machine door. The central component is the door body (1). The assembly process involves the following steps and components:

- Part 2:** A cylindrical lock cylinder is inserted into the bottom of the door body (1).
- Part 3:** A rectangular frame with two circular cutouts is positioned at the bottom of the door body (1).
- Part 4:** A rectangular frame with two circular cutouts is positioned at the top of the door body (1).
- Part 5:** A rectangular frame with two circular cutouts is positioned at the top of the door body (1).
- Part 6:** A small rectangular component is positioned at the top of the door body (1).
- Part 7:** A small rectangular component is positioned at the top of the door body (1).
- Part 8:** A small rectangular component is positioned at the top of the door body (1).

Mounting attachments and accessories			→ Page/Internet
[1]	On/off valve MS4-EE-...-B		5
[2]	Silencer U		9
[3]	Module connector MS...-MV1	For connecting the modules	9
[4]	Wall mounting kit MS...-WPE-B	For connecting the modules for wall mounting	9
[5]	Mounting plate AEND ¹⁾		9
[6]	Illuminating seal MEB-LD		9
[7]	Plug socket MSSD-EB		9
[8]	Plug socket with cable KMEB		9

4

Datasheet

General technical data	
Size	4
Pneumatic connection 1	G1/4
Pneumatic connection 2	G1/4
Pneumatic connection 3	G1/4
Design	Poppet valve, electrically actuated
Type of mounting	Via wall/surface bracket
Mounting position	Vertical +/-5°
Valve function	3/2-way, closed, single solenoid
Manual override	Non-detenting and detenting
Reset method	Mechanical spring
Type of control	Piloted
Pilot air supply	Internal
Signal status display	With accessories

Electrical data	
Characteristic coil data	24 V DC: 3.0 W
Permissible voltage fluctuation	+/- 10%
Electrical connection	Type C, to EN 175301-803
Degree of protection	IP65
Switch-on time	29 ms

Characteristic flow rate values	
Size	4
Standard nominal flow rate ¹⁾	2000 l/min
Standard flow rate, exhaust ²⁾	1600 l/min
C value	8.36 l/sbar
b value	0.49

1) Measured at p₁ = 6 bar and p₂ = 5 bar, Δp = 1 bar.

2) Measured at p₁ = 6 bar and p₂ = 0 bar, Δp = 6 bar.

Operating and environmental conditions	
Operating pressure (MPa)	0.3 ... 0.7 MPa
Operating pressure (bar)	3 ... 7 bar
Operating medium	Compressed air to ISO 8573-1:2010 [7:4:4]
PWIS conformity	VDMA24364-B1/B2-L
Ambient temperature	-5 ... 50°C
Temperature of medium	-5 ... 50°C
Corrosion resistance class CRC ¹⁾	1 - Low corrosion stress

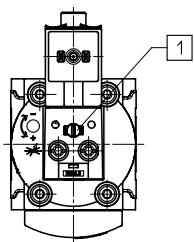
1) Corrosion resistance class CRC 1 to Festo standard FN 940070. Low corrosion stress. Dry internal application or transport and storage protection. Also applies to parts behind covers, in the non-visible interior area, or parts which are covered in the application (e.g. drive trunnions).

Weight	
Size	4
Product weight	194 g

Materials	
Housing material	Reinforced PA
Sealing material	HNBR, NBR
Note on materials	RoHS-compliant

Datasheet

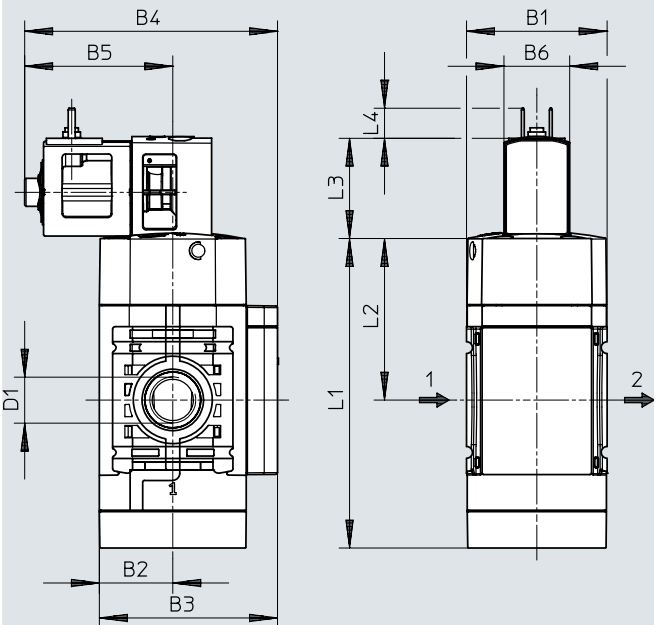
Manual override



[1] Detenting and non-detenting manual override

Dimensions – Basic version

Download CAD data → www.festo.com

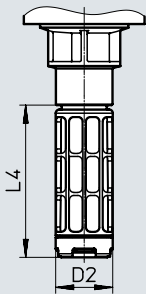


[1] Plug connection to EN 175301-803 → Flow direction

Type	B1	B2	B3	B4	B5	B6	D1	L1	L2	L3	L4
MS4-EE-...-B	40.2	21	50.9	72.3	42.4	18.8	G1/4	88.5	46.2	28.7	8.6

Dimensions – Silencer (accessories)

Download CAD data → www.festo.com



Type	D2 Ø	L4
U-1/4	20	55

Datasheet

★ Core Range

Ordering data		
Pneumatic connection 1	Part no.	Type
G1/4	★ 8091771	MS4-EE-1/4-V24-B

Accessories

Wall mounting kit
MS...-WPE-B

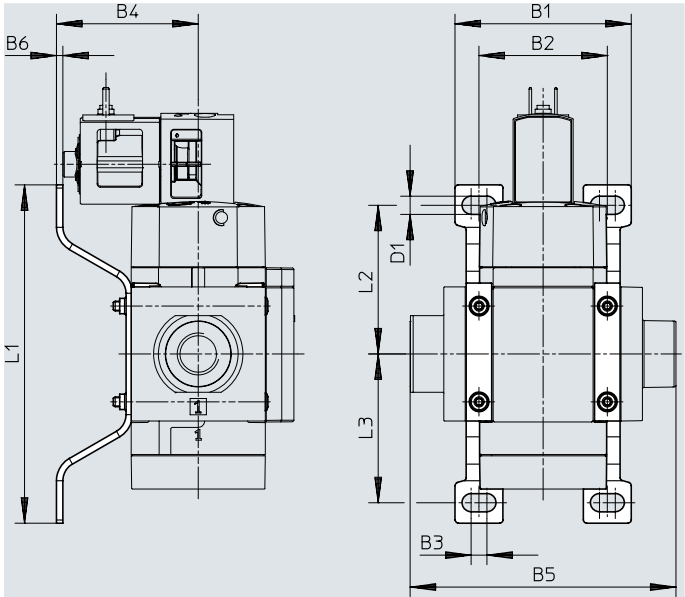
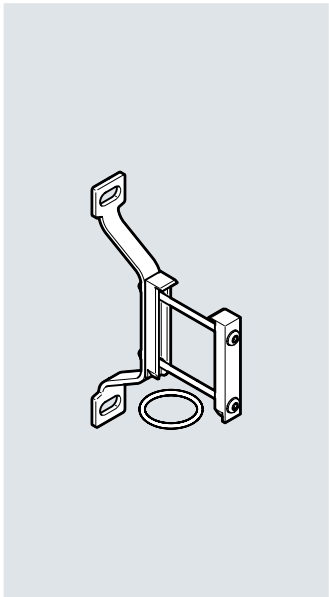
For size 4

- For wall mounting

Materials:

Steel

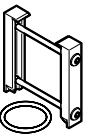
RoHS-compliant

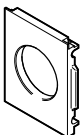


Dimensions and ordering data													
Size	B1	B2	B3	B4	B5	B6	D1 Ø	L1	L2	L3	Weight [g]	Part no.	Type
4	55.2	40.2	5	44.4	83.3	2	5.7	106	46.6	46.6	30	8118600	MS4-WPE-B

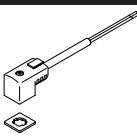
Accessories


★ Core Range

Ordering data – Module connector MS...-MV1				
	Size	Description	Part no.	Type
	4	For connecting the modules for wall mounting	8119201	MS4-MV1

Ordering data – Mounting plate MS...-AEND				
	Size	Description	Part no.	Type
	4	In combination with mounting bracket MS...-WPE-B for wall mounting an individual component	542966	MS4-AEND

Ordering data – Plug socket MSSD				
	Electrical connection	Cable connection	Part no.	Type
	3-pin	Screw terminal	★ 151687	MSSD-EB
	4-pin	Insulation displacement connector	192745	MSSD-EB-S-M14

Ordering data – Plug socket with cable KMEB						
	Operating voltage	Electrical connection	Switching status indication	Cable length [m]	Part no.	Type
	24 V DC	2-pin	LED	2.5	547268	KMEB-3-24-2.5-LED
				5	547269	KMEB-3-24-5-LED
			–	2.5	547270	KMEB-3-24-2.5
				5	547271	KMEB-3-24-5
		3-pin	LED	2.5	★ 151688	KMEB-1-24-2.5-LED
				5	151689	KMEB-1-24-5-LED
				10	193457	KMEB-1-24-10-LED

Ordering data – Illuminating seal MEB-LD					Datasheets → Internet: meb, mc	
	Description	Operating voltage range	Part no.	Type		
	For plug socket with cable KMEB and plug socket MSSD-EB	12 ... 24 V DC	151717	MEB-LD-12-24DC		

Ordering data – Silencer U				
	Pneumatic connection	Part no.	Type	
	G1/4	2316	U-1/4	

Festo - Your Partner in Automation



1 Festo Inc.

5300 Explorer Drive
Mississauga, ON L4W 5G4
Canada

Festo Customer Interaction Center

Tel: 1 877 463 3786
Fax: 1 877 393 3786
Email: customer.service.ca@festo.com



2 Festo Pneumatic

Av. Ceylán 3,
Col. Tequesquináhuac
54020 Tlalneptla,
Estado de México

Multinational Contact Center

01 800 337 8669
ventas.mexico@festo.com



3 Festo Corporation

1377 Motor Parkway
Suite 310
Islandia, NY 11749

Festo Customer Interaction Center

1 800 993 3786
1 800 963 3786
customer.service.us@festo.com



4 Regional Service Center

7777 Columbia Road
Mason, OH 45040

Connect with us



www.festo.com/socialmedia



www.festo.com

Subject to change