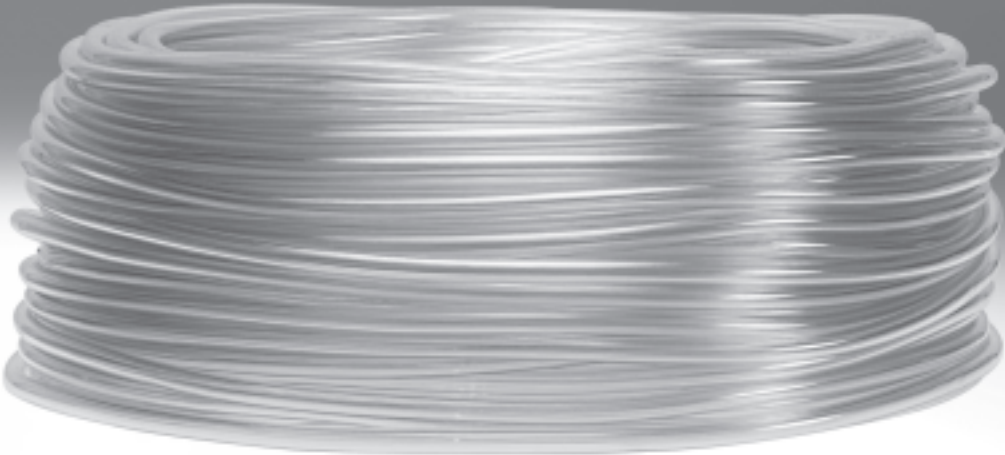



Plastic tubing



Plastic tubing

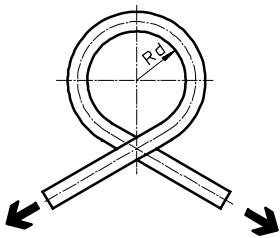
Product range overview and Type codes

Version	Type	Inside Ø [mm]	Colour			Operating medium			Shore hardness	→ Page/ Internet
			Blue	Black	Natural	Compressed air	Vacuum	Water (not drinking water)		
	PCN Polyvinyl chloride	4	-	-	■	■	-	■	76	4
	P Nitrile rubber	6, 9 13, 19	■	■	-	■	■	■	68 71	3

	PCN	4	NT
Material			
PCN	Polyvinyl chloride		
P	Nitrile rubber		
Internal Ø [mm]			
Colour			
SW	Black		
BL	Blue		
NT	Natural		

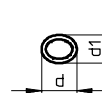
Measuring methods

Flow-relevant bending radius Rd



The tubing is bent in the direction of its inherent flexion until a 5% flattening of the tubing O.D. occurs. The Rd is then calculated.

There is no reduction in the flow rate up until the Rd is reached.

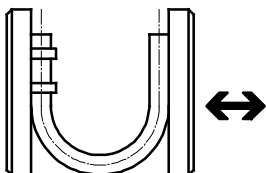


Cross section flattened as a result of bended tubing

d = non deformed tubing OD

d1 = deformed tubing OD

Minimum bending radius Rmin



The tubing attached to a movable plate is bent until the deformation results in a kink.


The measured value is the minimum bending radius Rmin. This Rmin leads to considerable reductions in flow.


Rubber hoses P

Technical data

Rubber hose P, with textile reinforcement

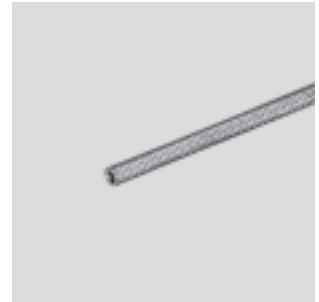
Compressed air tubing with textile reinforcement, for female hose connector type N

-  - Ambient temperature
-20 ... +80 °C

-  - Temperature dependent operating pressure
-0.95 ... 16 bar

Material:
P-6/P-9: Nitrile rubber
P-13/P-19: Ethylene propylene rubber, styrene-butadiene rubber

Note on material:
Free of copper and PTFE
RoHS-conform



Dimensions and ordering data								
O.D. [mm]	I.D. [mm]	Min. bending radius [mm]	Flow-relevant bending radius [mm]	Weight [kg/m]	Colour	Part No.	Type	PU ¹⁾ [m]
13	6	20	45	0.144	Blue	2231	P-6-BL	40
16	9	30	60	0.186	Blue	2232	P-9-BL	40
23	13	50	100	0.400	Black	2234	P-13-SW	40
31	19	60	200	0.649	Black	2235	P-19-SW	40

1) Packaging unit

Plastic tubing PCN

Technical data

FESTO

Plastic tubing PCN

for use with condensate drains on D series service units



Operating and environmental conditions		
Temperature dependent operating pressure	[bar]	-0.5 ... +0.25
Ambient temperature	[°C]	-10 ... +60

Materials	
Shore hardness	A 76
Tubing	PVC
Note on materials	Conforms to RoHS

Dimensions and ordering data						
O.D. [mm]	I.D. [mm]	Weight [kg/m]	Colour	Part No.	Type	PU ¹⁾ [m]
6.5	4	0.025	Natural	7134	PCN-4-NT	50

1) Packaging unit