

## Silencers

**FESTO**



Festo core product range  
Covers 80% of your automation tasks

Worldwide:

Always in stock

Superb:

Festo quality at an attractive price

Easy:

Simplified procurement and warehousing

★ Generally ready for dispatch from the factory within 24 hours

In stock at 13 Service Centres worldwide

More than 2200 products


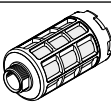
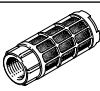
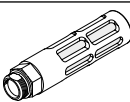
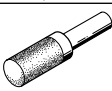
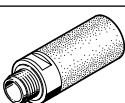

★ Generally ready for dispatch from the factory within 5 days

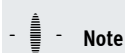
Assembled for you in 4 Service Centres worldwide

Up to  $6 \times 10^{12}$  variants per product family

Just look  
for the  
star!

## Product range overview




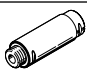
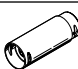
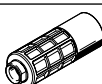

| Design   | Type    | Connection D1 |          |            | Push-in connector  | For tubing I.D. | Push-in sleeve<br>Ø | Noise level<br>[dB (A)] | → Page/<br>Internet |
|--|---------|---------------|----------|------------|--------------------|-----------------|---------------------|-------------------------|---------------------|
|  |         | M thread      | G thread | NPT thread |                    |                 |                     |                         |                     |
| Sintered metal   |         |               |          |            |                    |                 |                     |                         |                     |
|    | U       | –             | –        | –          | –                  | 3               | –                   | < 70                    | 4                   |
|  |         |               |          |            |                    | 4               |                     | < 77                    |                     |
| Polymer, male thread   |         |               |          |            |                    |                 |                     |                         |                     |
|    | U       | –             | G1/8     | –          | –                  | –               | –                   | < 74                    | 5                   |
|  |         |               | G1/4     |            |                    |                 |                     | < 76                    |                     |
|  |         |               | G3/8     |            |                    |                 |                     | < 82                    |                     |
|  |         |               | G1/2     |            |                    |                 |                     | < 82                    |                     |
|  |         |               | G3/4     |            |                    |                 |                     | < 85                    |                     |
|  |         |               | G1       |            |                    |                 |                     | < 90                    |                     |
| Polymer, female thread   |         |               |          |            |                    |                 |                     |                         |                     |
|    | U-...-I | –             | G1/8     | –          | –                  | –               | –                   | < 76.5                  | 6                   |
| Die-cast metal   |         |               |          |            |                    |                 |                     |                         |                     |
|    | U-...-B | –             | G1/8     | –          | –                  | –               | –                   | < 74                    | 7                   |
|  |         |               | G1/4     |            |                    |                 |                     | < 80                    |                     |
|  |         |               | G3/8     |            |                    |                 |                     | < 80                    |                     |
|  |         |               | G1/2     |            |                    |                 |                     | < 81                    |                     |
|  |         |               | G3/4     |            |                    |                 |                     | < 83                    |                     |
|  |         |               | G1       |            |                    |                 |                     | < 85                    |                     |
|  | –       | –             | 1/8 NPT  | –          | –                  | –               | < 74                | 8                       |                     |
|  |         |               | 1/4 NPT  |            |                    |                 | < 78                |                         |                     |
|  |         |               | 3/8 NPT  |            |                    |                 | < 80                |                         |                     |
|  |         |               | 1/2 NPT  |            |                    |                 | < 80                |                         |                     |
|  |         |               | 3/4 NPT  |            |                    |                 | < 81                |                         |                     |
|  |         |               | 1 NPT    |            |                    |                 | < 80                |                         |                     |
| With push-in sleeve for push-in fitting QS, Quick Star                             |         |               |          |            |                    |                 |                     |                         |                     |
|  | UC-QS   | –             | –        | –          | –                  | –               | 3                   | < 60                    | 9                   |
|  |         |               |          |            |                    |                 | 4                   | < 60                    |                     |
|  |         |               |          |            |                    |                 | 6                   | < 60                    |                     |
|  |         |               |          |            |                    |                 | 8                   | < 60                    |                     |
|  |         |               |          |            |                    |                 | 10                  | < 68                    |                     |
| Threaded connection, for solenoid valves CPE, Compact Performance                  |         |               |          |            |                    |                 |                     |                         |                     |
|  | UC      | M5            | –        | –          | –                  | –               | –                   | < 60                    | 10                  |
|  |         | M7            |          |            |                    |                 |                     | < 58                    |                     |
|  |         | –             | G1/8     |            |                    |                 |                     | < 59                    |                     |
|  |         | G1/4          | < 60     |            |                    |                 |                     |                         |                     |
|  |         | G3/8          | < 60     |            |                    |                 |                     |                         |                     |
| Push-in connector, for solenoid valves VUVB-ST12/valve terminal type 23 VTUB-12    |         |               |          |            |                    |                 |                     |                         |                     |
|  | AMTC    | –             | –        | –          | Cartridge<br>10 mm | –               | –                   | < 58                    | 11                  |



### Note

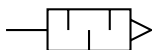
Clean silencers with kerosene (not with petrol or trichloroethylene).

## Product range overview

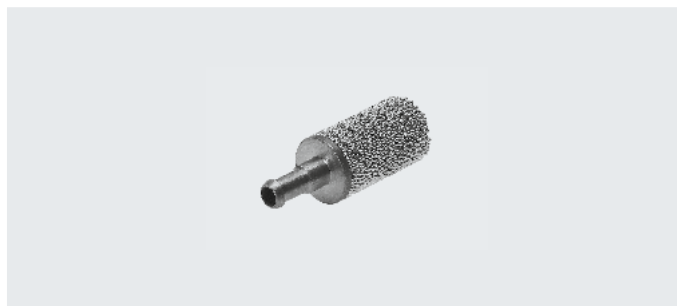
| Design  | Type      | Connection D1                  |          |            | Push-in connector | For tubing I.D. | Push-in sleeve<br>∅ | Noise level<br>[dB (A)] | → Page/<br>Internet |   |   |   |      |
|---|-----------|--------------------------------|----------|------------|-------------------|-----------------|---------------------|-------------------------|---------------------|---|---|---|------|
|   |           | M thread                       | G thread | NPT thread |                   |                 |                     |                         |                     |   |   |   |      |
| Metal   |           |                                |          |            |                   |                 |                     |                         |                     |   |   |   |      |
|    | AMTE-M-H  | M5                             | –        | –          | –                 | –               | –                   | < 71                    | 12                  |   |   |   |      |
|   |           | –                              | G1/8     |            |                   |                 |                     | < 92                    |                     |   |   |   |      |
|   |           |                                | G1/4     |            |                   |                 |                     | < 95                    |                     |   |   |   |      |
|   |           |                                | G3/8     |            |                   |                 |                     | < 92                    |                     |   |   |   |      |
|   |           |                                | G1/2     |            |                   |                 |                     | < 92                    |                     |   |   |   |      |
|   |           |                                |          |            |                   |                 |                     |                         |                     |   |   |   |      |
|    | AMTE-M-LH | M3                             | –        | –          | –                 | –               | –                   | < 55                    | 13                  |   |   |   |      |
|   |           | M5                             |          |            |                   |                 |                     | < 72                    |                     |   |   |   |      |
|   |           | –                              | G1/8     |            |                   |                 |                     | < 76                    |                     |   |   |   |      |
|   |           |                                | G1/4     |            |                   |                 |                     | < 83                    |                     |   |   |   |      |
|   |           |                                | G3/8     |            |                   |                 |                     | < 82                    |                     |   |   |   |      |
|   |           |                                | G1/2     |            |                   |                 |                     | < 88                    |                     |   |   |   |      |
|   |           |                                | G3/4     |            |                   |                 |                     | < 85                    |                     |   |   |   |      |
|   |           |                                | G1       |            |                   |                 |                     | < 88                    |                     |   |   |   |      |
|   |           | –                              | –        |            |                   |                 |                     | 10-32 UNF-2A            |                     | – | – | – | < 71 |
|   |           |                                |          |            |                   |                 |                     | 1/8 NPT                 | < 77                |   |   |   |      |
|   |           |                                |          |            |                   |                 |                     | 1/4 NPT                 | < 82                |   |   |   |      |
|   |           |                                |          |            |                   |                 |                     | 3/8 NPT                 | < 83                |   |   |   |      |
|   |           |                                |          |            |                   |                 |                     | 1/2 NPT                 | < 85                |   |   |   |      |
|   |           |                                |          |            |                   |                 |                     |                         |                     |   |   |   |      |
|   |           | For vacuum generators VN-T2/T3 |          |            |                   |                 |                     |                         |                     |   |   |   |      |
|   | UO        | M7                             | –        | –          | –                 | –               | –                   | –                       | 16                  |   |   |   |      |
|   |           | –                              | G1/8     |            |                   |                 |                     |                         |                     |   |   |   |      |
|   |           |                                | G1/4     |            |                   |                 |                     |                         |                     |   |   |   |      |
| For vacuum generators VN-T4/T6  |           |                                |          |            |                   |                 |                     |                         |                     |   |   |   |      |
|   | UOM       | –                              | G1/4     | –          | –                 | –               | –                   | –                       | 17                  |   |   |   |      |
|   | UOMS      |                                | G3/8     |            |                   |                 |                     |                         |                     |   |   |   |      |
|   |           |                                | –        |            |                   |                 |                     |                         |                     |   |   |   |      |
| For soft-start/quick exhaust valve MS6-SV   |           |                                |          |            |                   |                 |                     |                         |                     |   |   |   |      |
|    | UOS       | –                              | G1       | –          | –                 | –               | –                   | < 75                    | ms6-sv              |   |   |   |      |
| Filter silencer   |           |                                |          |            |                   |                 |                     |                         |                     |   |   |   |      |
|    | LFU       | –                              | G1/4     | –          | –                 | –               | –                   | < 40                    | lfu                 |   |   |   |      |
|   |           |                                | G3/8     |            |                   |                 |                     |                         |                     |   |   |   |      |
|   |           |                                | G1/2     |            |                   |                 |                     |                         |                     |   |   |   |      |
|   |           |                                | G1       |            |                   |                 |                     |                         |                     |   |   |   |      |

## Data sheet – Sintered metal design

### Function



- For noise reduction and avoiding contamination at the exhaust ports of pneumatic components
- Compact design



### General technical data

| Pneumatic connection                               |          | PK-3 | PK-4 |
|--|----------|------|------|
| Mounting position                                  |          | Any  |      |
| Noise level <sup>1)</sup>                          | [dB (A)] | < 70 | < 77 |
| Flow rate with respect to atmosphere <sup>2)</sup> | [l/min]  | 310  | 580  |
| Product weight                                     | [g]      | 4.5  | 4.1  |

1) Measured at 6 bar with respect to atmosphere at a distance of 1 m

2) Measured at p<sub>1</sub> = 6 bar

### Operating and environmental conditions

|                                |       |   |
|--------------------------------|-------|---|
| Operating pressure             | [bar] | 0 ... 10                                  |
| Operating medium               |       | Compressed air to ISO 8573-1:2010 [7:-:-] |
| Note on operating/pilot medium |       | Lubricated operation possible             |
| Ambient temperature            | [°C]  | -10 ... +70                               |

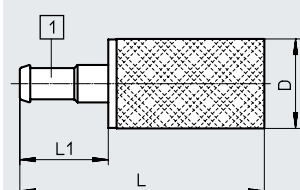
### Materials

|                   |                         |
|-------------------|-------------------------|
| Screwed trunnion  | Brass                   |
| Cushioning insert | Bronze                  |
| Note on materials | Free of copper and PTFE |
|                   | RoHS-compliant          |

### Dimensions

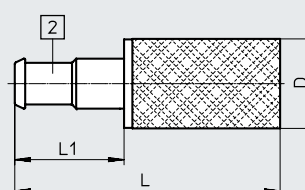
Download CAD data → [www.festo.com](http://www.festo.com)

#### U-PK-3



[1] Barbed fitting for tubing I.D. 3

#### U-PK-4



[2] Barbed fitting for tubing I.D. 4

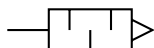
### Ordering data

| Pneumatic connection | D<br>Ø | L    | L1   | Part no. | Type   | PJ <sup>1)</sup> |
|----------------------|--------|------|------|----------|--------|------------------|
| PK-3                 | 8.6    | 23.5 | 8.5  | 4646     | U-PK-3 | 10               |
| PK-4                 | 8.6    | 25.5 | 10.5 | 4932     | U-PK-4 | 10               |

1) Packaging unit

## Data sheet – Polymer design, male thread

## Function



- For noise reduction at the exhaust ports of pneumatic components



| General technical data                             |          |      |      |      |       |       |       |
|--|----------|------|------|------|-------|-------|-------|
| Pneumatic connection                               |          | G1/8 | G1/4 | G3/8 | G1/2  | G3/4  | G1    |
| Mounting position                                  |          | Any  |      |      |       |       |       |
| Noise level <sup>1)</sup>                          | [dB (A)] | < 74 | < 76 | < 82 | < 82  | < 85  | < 90  |
| Flow rate with respect to atmosphere <sup>2)</sup> | [l/min]  | 2000 | 3300 | 6000 | 10300 | 17600 | 20800 |
| Product weight                                     | [g]      | 2.3  | 7.7  | 29.6 | 58.2  | 83    | 139.8 |

1) Measured at 6 bar with respect to atmosphere at a distance of 1 m

2) Measured at p<sub>1</sub> = 6 bar

## Operating and environmental conditions

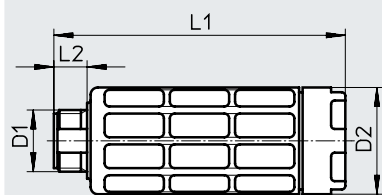
|                                |       |   |
|--------------------------------|-------|---|
| Operating pressure             | [bar] | 0 ... 10                                  |
| Operating medium               |       | Compressed air to ISO 8573-1:2010 [7:-:-] |
| Note on operating/pilot medium |       | Lubricated operation possible             |
| Ambient temperature            | [°C]  | -10 ... +70                               |

## Materials

|                   |                         |
|-------------------|-------------------------|
| Housing           | POM                     |
| Cushioning insert | PE                      |
| Note on materials | Free of copper and PTFE |
|                   | RoHS-compliant          |

## Dimensions

Download CAD data → [www.festo.com](http://www.festo.com)



## Ordering data

| Pneumatic connection | D2<br>ø | L1    | L2   | Part no. | Type     | PU <sup>1)</sup> |
|----------------------|---------|-------|------|----------|----------|------------------|
| G1/8                 | 15.2    | 35.9  | 5.5  | ★ 2307   | U-1/8    | 1                |
|                      |         |       |      | 534222   | U-1/8-50 | 50               |
| G1/4                 | 19      | 57    | 6.5  | ★ 2316   | U-1/4    | 1                |
|                      |         |       |      | 534223   | U-1/4-20 | 20               |
| G3/8                 | 33.5    | 78.8  | 7.5  | ★ 2309   | U-3/8    | 1                |
|                      |         |       |      | 534224   | U-3/8-20 | 20               |
| G1/2                 | 43      | 88.1  | 9    | ★ 2310   | U-1/2    | 1                |
|                      |         |       |      | 534225   | U-1/2-20 | 20               |
| G3/4                 | 45      | 120.7 | 10.5 | ★ 2311   | U-3/4    | 1                |
| G1                   | 55      | 126.5 | 11.5 | ★ 2312   | U-1      | 1                |

1) Packaging unit

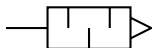
Festo core product range



Generally ready for dispatch from the factory within 24 hours  
Generally ready for dispatch from the factory within 5 days

## Data sheet – Polymer design, female thread

### Function



- For noise reduction at the exhaust ports of pneumatic components



| General technical data                             |          |        |
|--|----------|--------|
| Pneumatic connection                               |          | G1/8   |
| Mounting position                                  |          | Any    |
| Noise level <sup>1)</sup>                          | [dB (A)] | < 76.5 |
| Flow rate with respect to atmosphere <sup>2)</sup> | [l/min]  | 2050   |
| Product weight                                     | [g]      | 3.6    |

1) Measured at 6 bar with respect to atmosphere at a distance of 1 m

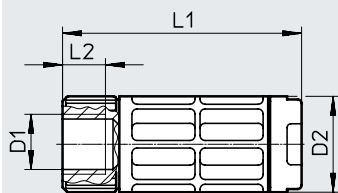
2) Measured at p<sub>1</sub> = 6 bar

| Operating and environmental conditions |       |   |
|--|-------|---|
| Operating pressure                     | [bar] | 0 ... 10                                  |
| Operating medium                       |       | Compressed air to ISO 8573-1:2010 [7:-:-] |
| Note on operating/pilot medium         |       | Lubricated operation possible             |
| Ambient temperature                    | [°C]  | -10 ... +70                               |

| Materials         |                         |
|-------------------|-------------------------|
| Housing           | POM                     |
| Cushioning insert | PE                      |
| Note on materials | Free of copper and PTFE |
|                   | RoHS-compliant          |

### Dimensions

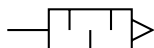
Download CAD data → [www.festo.com](http://www.festo.com)



| Ordering data        |      |    |     |          |         |
|----------------------|------|----|-----|----------|---------|
| Pneumatic connection | D2   | L1 | L2  | Part no. | Type    |
| D1                   | Ø    |    |     |          |         |
| G1/8                 | 15.2 | 38 | 6.5 | 3670     | U-1/8-I |

# Data sheet – Die-cast design

## Function



- For noise reduction at the exhaust ports of pneumatic components



| General technical data                             |          |      |      |      |      |       |
|--|----------|------|------|------|------|-------|
| Pneumatic connection                               | G1/8     | G1/4 | G3/8 | G1/2 | G3/4 | G1    |
| Mounting position                                  | Any      |      |      |      |      |       |
| Noise level <sup>1)</sup>                          | [dB (A)] | < 74 | < 80 | < 80 | < 81 | < 83  |
| Flow rate with respect to atmosphere <sup>2)</sup> | [l/min]  | 1340 | 2440 | 5800 | 7500 | 10000 |
| Product weight                                     | [g]      | 8    | 17   | 37   | 75   | 120   |
|  |          |      |      |      |      | 233   |

1) Measured at 6 bar with respect to atmosphere at a distance of 1 m

2) Measured at p1 = 6 bar

| Operating and environmental conditions          |   |
|---|---|
| Operating pressure for entire temperature range | [bar] 0 ... 10                            |
| Operating medium                                | Compressed air to ISO 8573-1:2010 [7:-:-] |
| Note on operating/pilot medium                  | Lubricated operation possible             |
| Ambient temperature                             | [°C] -10 ... +70                          |
| Corrosion resistance class CRC <sup>1)</sup>    | 1   |

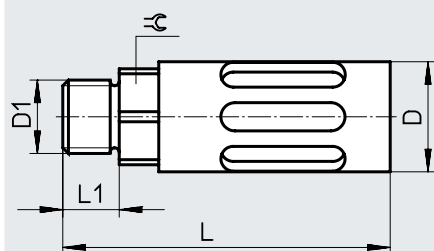
1) Corrosion resistance class CRC 1 to Festo standard FN 940070

Low corrosion stress. Dry indoor application or transport and storage protection. Also applies to parts behind coverings, in the non-visible interior area, and parts which are covered in the application (e.g. drive trunnions).

| Materials         |                         |
|-------------------|-------------------------|
| Housing           | Aluminium               |
| Screwed trunnion  | Aluminium               |
| Cushioning insert | PE                      |
| Note on materials | Free of copper and PTFE |
|                   | RoHS-compliant          |

## Dimensions

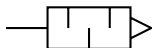
Download CAD data → [www.festo.com](http://www.festo.com)



| Ordering data        |      |       |      |    |          |         |
|----------------------|------|-------|------|----|----------|---------|
| Pneumatic connection | D    | L     | L1   | ≡  | Part no. | Type    |
| D1                   | Ø    |       |      |    |          |         |
| G1/8                 | 16   | 39.2  | 5.5  | 14 | 6841     | U-1/8-B |
| G1/4                 | 19.5 | 55.6  | 6.5  | 17 | 6842     | U-1/4-B |
| G3/8                 | 25   | 86.6  | 7.5  | 19 | 6843     | U-3/8-B |
| G1/2                 | 28   | 116.5 | 9    | 24 | 6844     | U-1/2-B |
| G3/4                 | 38   | 138   | 10.5 | 32 | 6845     | U-3/4-B |
| G1                   | 47.8 | 177   | 11.5 | 36 | 151990   | U-1-B   |

## Data sheet – Die-cast design

### Function



- For noise reduction at the exhaust ports of pneumatic components



| General technical data                             |          |         |         |         |         |         |       |
|--|----------|---------|---------|---------|---------|---------|-------|
| Pneumatic connection                               |          | 1/8 NPT | 1/4 NPT | 3/8 NPT | 1/2 NPT | 3/4 NPT | 1 NPT |
| Mounting position                                  |          | Any     |         |         |         |         |       |
| Noise level <sup>1)</sup>                          | [dB (A)] | < 74    | < 78    | < 80    | < 80    | < 81    | < 80  |
| Flow rate with respect to atmosphere <sup>2)</sup> | [l/min]  | 1450    | 3000    | 4500    | 6500    | 11834   | 15102 |
| Product weight                                     | [g]      | 8       | 17      | 37      | 75      | 128     | 233   |

1) Measured at 6 bar with respect to atmosphere at a distance of 1 m

2) Measured at p<sub>1</sub> = 6 bar

| Operating and environmental conditions          |   |
|---|---|
| Operating pressure for entire temperature range | [bar] 0 ... 10                            |
| Operating medium                                | Compressed air to ISO 8573-1:2010 [7:-:-] |
| Note on operating/pilot medium                  | Lubricated operation possible             |
| Ambient temperature                             | [°C] -10 ... +70                          |
| Corrosion resistance class CRC <sup>1)</sup>    | 1   |

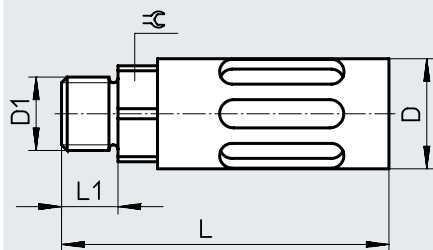
1) Corrosion resistance class CRC 1 to Festo standard FN 940070

Low corrosion stress. Dry indoor application or transport and storage protection. Also applies to parts behind coverings, in the non-visible interior area, and parts which are covered in the application (e.g. drive trunnions).

| Materials         |                         |
|-------------------|-------------------------|
| Housing           | Aluminium               |
| Screwed trunnion  | Aluminium               |
| Cushioning insert | PE                      |
| Note on materials | Free of copper and PTFE |
|                   | RoHS-compliant          |

### Dimensions

Download CAD data → [www.festo.com](http://www.festo.com)

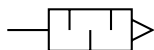


| Ordering data        |      |       |      |    |          |             |
|----------------------|------|-------|------|----|----------|-------------|
| Pneumatic connection | D    | L     | L1   | ≡  | Part no. | Type        |
| D1                   | Ø    |       |      |    |          |             |
| 1/8 NPT              | 16   | 43    | 10   | 14 | 12638    | U-1/8-B-NPT |
| 1/4 NPT              | 19.5 | 63    | 15   | 17 | 12639    | U-1/4-B-NPT |
| 3/8 NPT              | 25   | 93    | 15   | 19 | 12740    | U-3/8-B-NPT |
| 1/2 NPT              | 28   | 125   | 19   | 24 | 12741    | U-1/2-B-NPT |
| 3/4 NPT              | 38   | 151   | 18   | 30 | 566823   | U-3/4-B-NPT |
| 1 NPT                | 47.8 | 193.3 | 22.5 | 41 | 571280   | U-1-B-NPT   |



## Data sheet – Design with push-in sleeve

## Function



- For noise reduction at the exhaust ports of pneumatic components
- For QS push-in fittings 3 ... 10 mm



## General technical data

| Push-in sleeve Ø   | 3    | 4    | 6    | 8    | 10   |
|--|------|------|------|------|------|
| Mounting position  | Any  |      |      |      |      |
| Noise level <sup>1)</sup> [dB (A)]                         | < 60 | < 60 | < 60 | < 60 | < 68 |
| Flow rate with respect to atmosphere <sup>2)</sup> [l/min] | 170  | 350  | 800  | 1500 | 3100 |
| Product weight [g]   | 0.4  | 0.5  | 1.1  | 2.3  | 5.5  |

1) Measured at 6 bar with respect to atmosphere at a distance of 1 m

2) Measured at p<sub>1</sub> = 6 bar

## Operating and environmental conditions

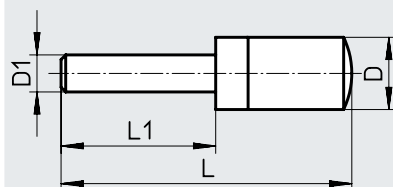
|                                |   |
|--------------------------------|---|
| Operating pressure [bar]       | 0 ... 10                                  |
| Operating medium               | Compressed air to ISO 8573-1:2010 [7:-:-] |
| Note on operating/pilot medium | Lubricated operation possible             |
| Ambient temperature [°C]       | -10 ... +70                               |

## Materials

|                   |                |
|-------------------|----------------|
| Screwed trunnion  | PE             |
| Cushioning insert | PE             |
| Note on materials | RoHS-compliant |

## Dimensions

Download CAD data → [www.festo.com](http://www.festo.com)

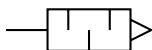


## Ordering data

| Push-in sleeve Ø D1 | D Ø            | L              | L1        | Part no. | Type      |
|---------------------|----------------|----------------|-----------|----------|-----------|
| 3                   | 7.8 +0.1/-0.3  | 29.1 ±0.6      | 14.4 ±0.2 | 165005   | UC-QS-3H  |
| 4                   | 7.8 +0.1/-0.3  | 31.0 ±0.6      | 16.3 ±0.2 | 165006   | UC-QS-4H  |
| 6                   | 9.8 -0.4       | 41.3 +1.4      | 17.2      | 165007   | UC-QS-6H  |
| 8                   | 13.8 +0.2/-0.3 | 54.4 +0.5/-1.0 | 23.4      | 175611   | UC-QS-8H  |
| 10                  | 17.8 -0.3      | 68.7 +0.2/-0.8 | 26.7      | 526475   | UC-QS-10H |

## Data sheet – Design with threaded connection

### Function



- For noise reduction at the exhaust ports of pneumatic components
- For solenoid valves CPE, Compact Performance



| General technical data                             |          |      |      |      |      |      |
|--|----------|------|------|------|------|------|
| Pneumatic connection                               |          | M5   | M7   | G1/8 | G1/4 | G3/8 |
| Mounting position                                  |          | Any  |      |      |      |      |
| Noise level <sup>1)</sup>                          | [dB (A)] | < 60 | < 58 | < 59 | < 60 | < 60 |
| Flow rate with respect to atmosphere <sup>2)</sup> | [l/min]  | 350  | 800  | 1700 | 3200 | 5000 |
| Product weight                                     | [g]      | 0.4  | 1.2  | 2.6  | 5.2  | 10.5 |

1) Measured at 6 bar with respect to atmosphere at a distance of 1 m

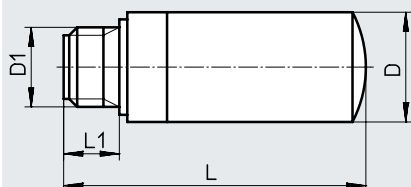
2) Measured at p<sub>1</sub> = 6 bar

| Operating and environmental conditions |   |
|--|---|
| Operating pressure                     | [bar] 0 ... 10                            |
| Operating medium                       | Compressed air to ISO 8573-1:2010 [7:-:-] |
| Note on operating/pilot medium         | Lubricated operation possible             |
| Ambient temperature                    | [°C] -10 ... +70                          |

| Materials         |                |
|-------------------|----------------|
| Screwed trunnion  | PE             |
| Cushioning insert | PE             |
| Note on materials | RoHS-compliant |

### Dimensions

Download CAD data → [www.festo.com](http://www.festo.com)

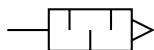


| Ordering data        |                |                |           |          |           |                  |
|----------------------|----------------|----------------|-----------|----------|-----------|------------------|
| Pneumatic connection | D              | L              | L1        | Part no. | Type      | PU <sup>1)</sup> |
| D1                   | Ø              |                |           |          |           |                  |
| M5                   | 7.8 +0.1/-0.3  | 19.4 +0.6/-0.8 | 4.5 ±0.2  | 165003   | UC-M5     | 1                |
|                      |                |                |           | 534217   | UC-M5-50  | 50               |
| M7                   | 9.8 -0.4       | 30.7 +0.6/-0.8 | 5.5 -0.5  | 161418   | UC-M7     | 1                |
|                      |                |                |           | 534218   | UC-M7-50  | 50               |
| G1/8                 | 13.8 +0.2/-0.3 | 38.0 +0.8/-1.0 | 6.5 ±0.1  | 161419   | UC-1/8    | 1                |
|                      |                |                |           | 534219   | UC-1/8-50 | 50               |
| G1/4                 | 17.8 -0.3      | 50.8 +0.8/-1.0 | 8.5 ±0.15 | 165004   | UC-1/4    | 1                |
|                      |                |                |           | 534220   | UC-1/4-20 | 20               |
| G3/8                 | 22.1 -0.4      | 69.5 +0.6/-0.8 | 9.5 ±0.1  | 1707427  | UC-3/8    | 1                |
|                      |                |                |           | 576759   | UC-3/8-20 | 20               |

1) Packaging unit

## Data sheet

## Function



- For solenoid valves VUVB-ST12/ valve terminal VTUB-12
- Mounting via PIN (spring clip), included in the scope of delivery of the valve



## General technical data

|  |                 |      |
|--|-----------------|------|
| Pneumatic connection                               | Cartridge 10 mm |      |
| Mounting position                                  | Any             |      |
| Noise level <sup>1)</sup>                          | [dB (A)]        | ≤ 58 |
| Flow rate with respect to atmosphere <sup>2)</sup> | [l/min]         | 800  |
| Product weight                                     | [g]             | 2.0  |

1) Measured at 6 bar with respect to atmosphere at a distance of 1 m

2) Measured at p1 = 6 bar

## Operating and environmental conditions

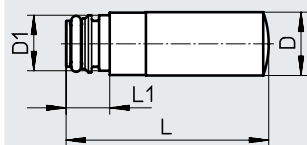
|                                 |   |            |
|---------------------------------|---|------------|
| Operating pressure              | [bar]                                     | 0 ... 10   |
| Operating medium                | Compressed air to ISO 8573-1:2010 [7:-:-] |            |
| Note on operating/ pilot medium | Lubricated operation possible             |            |
| Ambient temperature             | [°C]                                      | -5 ... +60 |

## Materials

|                   |                |
|-------------------|----------------|
| Screwed trunnion  | PE             |
| Cushioning insert | PE             |
| Note on materials | RoHS-compliant |

## Dimensions

Download CAD data → [www.festo.com](http://www.festo.com)



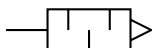
## Ordering data

| Pneumatic connection | D<br>Ø | D1<br>Ø | L    | L1  | Part no. | Type        | PU <sup>1)</sup> |
|----------------------|--------|---------|------|-----|----------|-------------|------------------|
| Cartridge 10 mm      | 9.8    | 8.9     | 31.4 | 6.8 | 1224460  | AMTC-P-PC10 | 1                |

1) Packaging unit

## Data sheet – Short design

### Function



- Suitable for reducing noise at the exhaust ports of pneumatic systems



| General technical data                             |          |      |      |      |      |
|--|----------|------|------|------|------|
| Pneumatic connection                               | M5       | G1/8 | G1/4 | G3/8 | G1/2 |
| Mounting position                                  | Any      |      |      |      |      |
| Noise level <sup>1)</sup>                          | [dB (A)] | < 71 | < 92 | < 95 | < 92 |
| Flow rate with respect to atmosphere <sup>2)</sup> | [l/min]  | 91   | 615  | 1000 | 1545 |
| Product weight                                     | [g]      | 1.1  | 5    | 9.5  | 17   |
|  |          |      |      | 17   | 30   |

1) Measured at 6 bar with respect to atmosphere at a distance of 1 m

2) Measured at p<sub>1</sub> = 6 bar

| Operating and environmental conditions       |   |
|--|---|
| Operating pressure                           | [bar] 0 ... 10                            |
| Operating medium                             | Compressed air to ISO 8573-1:2010 [7:-:-] |
| Note on operating/pilot medium               | Lubricated operation possible             |
| Ambient temperature                          | [°C] -40 ... +80                          |
| Corrosion resistance class CRC <sup>1)</sup> | 1   |

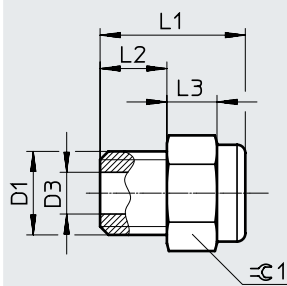
1) Corrosion resistance class CRC 1 to Festo standard FN 940070

Low corrosion stress. Dry indoor application or transport and storage protection. Also applies to parts behind coverings, in the non-visible interior area, and parts which are covered in the application (e.g. drive trunnions).

| Materials         |                |
|-------------------|----------------|
| Screwed trunnion  | Brass          |
| Cushioning insert | Bronze         |
| Note on materials | RoHS-compliant |

### Dimensions

Download CAD data → [www.festo.com](http://www.festo.com)

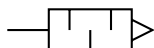


| Ordering data        |     |      |      |     |      |          |              |                  |  |
|----------------------|-----|------|------|-----|------|----------|--------------|------------------|--|
| Pneumatic connection | D3  | L1   | L2   | L3  | ±0.1 | Part no. | Type         | PU <sup>1)</sup> |  |
| D1                   | ∅   | ±0.5 | ±0.1 |     | -0.2 |          |              |                  |  |
| M5                   | 2.5 | 8.7  | 4    | 3   | 6    | 1206621  | AMTE-M-H-M5  | 20               |  |
| G1/8                 | 6.5 | 11.8 | 5.5  | 3.5 | 12   | 1206622  | AMTE-M-H-G18 | 20               |  |
| G1/4                 | 9   | 13.8 | 6.5  | 4   | 15   | 1206623  | AMTE-M-H-G14 | 20               |  |
| G3/8                 | 12  | 16.5 | 7.5  | 6   | 19   | 1206624  | AMTE-M-H-G38 | 10               |  |
| G1/2                 | 15  | 19   | 10   | 6   | 24   | 1206625  | AMTE-M-H-G12 | 10               |  |

1) Packaging unit

## Data sheet – Long design

## Function



- Suitable for reducing noise at the exhaust ports of pneumatic systems



| General technical data                             |          | M3   | M5   | G1/8 | G1/4 | G3/8 | G1/2  | G3/4  | G1    |
|--|----------|------|------|------|------|------|-------|-------|-------|
| Pneumatic connection                               |          |      |      |      |      |      |       |       |       |
| Mounting position                                  |          | Any  |      |      |      |      |       |       |       |
| Noise level <sup>1)</sup>                          | [dB (A)] | < 55 | < 72 | < 76 | < 83 | < 82 | < 88  | < 85  | < 88  |
| Flow rate with respect to atmosphere <sup>2)</sup> | [l/min]  | 95   | 255  | 1735 | 3140 | 5430 | 10500 | 12400 | 17235 |
| Product weight                                     | [g]      | 0.4  | 1.5  | 7.5  | 13   | 26   | 43    | 80    | 115   |

1) Measured at 6 bar with respect to atmosphere at a distance of 1 m

2) Measured at p1 = 6 bar

| Operating and environmental conditions       |   |
|--|---|
| Operating pressure                           | [bar] 0 ... 10                            |
| Operating medium                             | Compressed air to ISO 8573-1:2010 [7:-:-] |
| Note on operating/<br>pilot medium           | Lubricated operation possible             |
| Ambient temperature                          | [°C] -40 ... +80                          |
| Corrosion resistance class CRC <sup>1)</sup> | 1   |

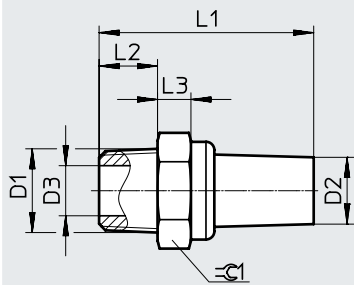
1) Corrosion resistance class CRC 1 to Festo standard FN 940070

Low corrosion stress. Dry indoor application or transport and storage protection. Also applies to parts behind coverings, in the non-visible interior area, and parts which are covered in the application (e.g. drive trunnions).

| Materials         |                |
|-------------------|----------------|
| Screwed trunnion  | Brass          |
| Cushioning insert | Bronze         |
| Note on materials | RoHS-compliant |

# Data sheet – Long design

## Dimensions

Download CAD data → [www.festo.com](http://www.festo.com)


## Ordering data

| Pneumatic connection<br>D1 | D2<br>ø<br>±0.5 | D3<br>ø | L1<br>±1 | L2<br>±0.1 | L3  | ±G1<br>-0.2 | Part no.  | Type          | PU <sup>1)</sup> |
|----------------------------|-----------------|---------|----------|------------|-----|-------------|-----------|---------------|------------------|
| M3                         | 2               | 1.5     | 14       | 3          | 2   | 4           | 1231120   | AMTE-M-LH-M3  | 20               |
| M5                         | 3               | 2.5     | 19.8     | 4          | 3   | 6           | ★ 1205858 | AMTE-M-LH-M5  | 20               |
| G1/8                       | 8               | 6.5     | 23.7     | 5.5        | 3.5 | 12          | ★ 1205860 | AMTE-M-LH-G18 | 20               |
| G1/4                       | 10              | 9       | 29       | 6.5        | 4   | 15          | ★ 1205861 | AMTE-M-LH-G14 | 20               |
| G3/8                       | 12              | 12      | 41       | 7.5        | 6   | 19          | ★ 1205862 | AMTE-M-LH-G38 | 10               |
| G1/2                       | 16              | 15      | 46.5     | 10         | 6   | 24          | ★ 1205863 | AMTE-M-LH-G12 | 10               |
| G3/4                       | 20.5            | 20      | 50       | 10         | 6   | 30          | 1205864   | AMTE-M-LH-G34 | 10               |
| G1                         | 20.5            | 26      | 59       | 10         | 6   | 36          | 1205865   | AMTE-M-LH-G1  | 10               |

1) Packaging unit

Festo core product range

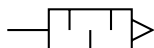


Generally ready for dispatch from the factory within 24 hours

Generally ready for dispatch from the factory within 5 days

## Data sheet – Long design

Function



- Suitable for reducing noise at the exhaust ports of pneumatic systems



| General technical data                             |          |              |         |         |         |         |
|--|----------|--------------|---------|---------|---------|---------|
| Pneumatic connection                               |          | 10-32 UNF-2A | 1/8 NPT | 1/4 NPT | 3/8 NPT | 1/2 NPT |
| Mounting position                                  |          | Any          |         |         |         |         |
| Noise level <sup>1)</sup>                          | [dB (A)] | < 71         | < 77    | < 82    | < 83    | < 85    |
| Flow rate with respect to atmosphere <sup>2)</sup> | [l/min]  | 260          | 1615    | 3080    | 5365    | 9240    |
| Product weight                                     | [g]      | 1.7          | 9       | 17      | 29      | 46      |

1) Measured at 6 bar with respect to atmosphere at a distance of 1 m

2) Measured at p<sub>1</sub> = 6 bar

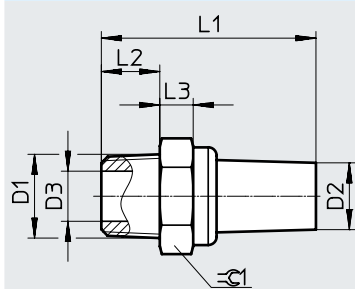
| Operating and environmental conditions       |   |
|--|---|
| Operating pressure                           | [bar] 0 ... 10                            |
| Operating medium                             | Compressed air to ISO 8573-1:2010 [7:-:-] |
| Note on operating/pilot medium               | Lubricated operation possible             |
| Ambient temperature                          | [°C] -40 ... +80                          |
| Corrosion resistance class CRC <sup>1)</sup> | 1   |

1) Corrosion resistance class CRC 1 to Festo standard FN 940070

Low corrosion stress. Dry indoor application or transport and storage protection. Also applies to parts behind coverings, in the non-visible interior area, and parts which are covered in the application (e.g. drive trunnions).

| Materials         |                |
|-------------------|----------------|
| Screwed trunnion  | Brass          |
| Cushioning insert | Bronze         |
| Note on materials | RoHS-compliant |

## Dimensions

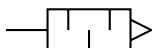
Download CAD data → [www.festo.com](http://www.festo.com)

| Ordering data        |        |      |      |      |     |      |          |               |                  |
|----------------------|--------|------|------|------|-----|------|----------|---------------|------------------|
| Pneumatic connection | D2     | D3   | L1   | L2   | L3  | ⌀1   | Part no. | Type          | PU <sup>1)</sup> |
| D1                   | ∅ ±0.5 | ∅    | ±1   | ±0.1 |     | -0.2 |          |               |                  |
| 10-32 UNF-2A         | 3      | 2.5  | 20.3 | 4    | 3.5 | 6    | 1206994  | AMTE-M-LH-U10 | 20               |
| 1/8 NPT              | 8      | 6    | 25.7 | 7    | 4   | 12   | 1206989  | AMTE-M-LH-N18 | 20               |
| 1/4 NPT              | 10     | 9    | 34.5 | 11   | 5   | 15   | 1206990  | AMTE-M-LH-N14 | 20               |
| 3/8 NPT              | 12     | 11.5 | 43.2 | 11   | 5.5 | 19   | 1206991  | AMTE-M-LH-N38 | 10               |
| 1/2 NPT              | 16     | 15   | 49   | 13   | 5.5 | 24   | 1206992  | AMTE-M-LH-N12 | 10               |

1) Packaging unit

# Data sheet

## Function



- Use only for vacuum generators VN-T2/T3
- Special minimal resistance silencer
- Facilitates trouble-free operation of the vacuum generator



| General technical data |     |      |      |
|------------------------|-----|------|------|
| Pneumatic connection   | M7  | G1/8 | G1/4 |
| Mounting position      | Any |      |      |
| Product weight [g]     | 2.5 | 5    | 8    |

| Operating and environmental conditions       |   |
|--|---|
| Operating pressure of vacuum generator [bar] | 0 ... 8                                   |
| Operating medium                             | Compressed air to ISO 8573-1:2010 [7:4:4] |
| Ambient temperature [°C]                     | -10 ... +60                               |
| Corrosion resistance class CRC <sup>1)</sup> | 2   |

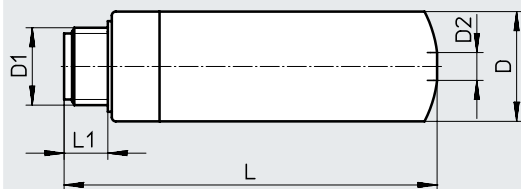
1) Corrosion resistance class CRC 2 to Festo standard FN 940070

Moderate corrosion stress. Indoor applications in which condensation can occur. Externally visible parts with primarily decorative surface requirements which are in direct contact with a normal industrial environment.

| Materials         |                         |
|-------------------|-------------------------|
| Screwed trunnion  | PE                      |
| Cushioning insert | PE                      |
| Note on materials | Free of copper and PTFE |

## Dimensions

Download CAD data → [www.festo.com](http://www.festo.com)

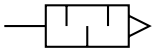


| Ordering data        |      |     |      |     |          |        |
|----------------------|------|-----|------|-----|----------|--------|
| Pneumatic connection | D    | D2  | L    | L1  | Part no. | Type   |
| D1                   | ∅    |     |      |     |          |        |
| M7                   | 9.8  | 3   | 36.7 | 5.5 | 197582   | UO-M7  |
| G1/8                 | 13.8 | 3.5 | 48   | 6.5 | 197583   | UO-1/8 |
| G1/4                 | 17.8 | 5.3 | 62.3 | 8.5 | 197584   | UO-1/4 |



## Data sheet

### Function



- Use only for vacuum generators VN-T4/T6
- Special minimal resistance silencer
- Facilitates trouble-free operation of the vacuum generator
- Silencer extension for extending the silencer for further noise reduction



| General technical data           |               |         |          |          |
|----------------------------------|---------------|---------|----------|----------|
| Type                             | UOM-1/4       | UOM-3/8 | UOMS-1/4 | UOMS-3/8 |
| Pneumatic connection             | G1/4          | G3/8    | –        |          |
| Design                           | Open silencer |         |          |          |
| Type of mounting                 | Screw-in      |         | Latching |          |
| Mounting position                | Any           |         |          |          |
| Type of seal on screwed trunnion | No seal       |         |          |          |
| Product weight [g]               | 11.1          | 22.7    | 8.6      | 17.5     |

| Operating and environmental conditions       |           |  |
|--|-----------|--|
| Operating pressure of vacuum generator [bar] | 0 ... 8   |  |
| Ambient temperature [°C]                     | 0 ... +60 |  |
| Corrosion resistance class CRC <sup>1)</sup> | 2         |  |

1) Corrosion resistance class CRC 2 to Festo standard FN 940070

Moderate corrosion stress. Indoor applications in which condensation can occur. Externally visible parts with primarily decorative surface requirements which are in direct contact with a normal industrial environment.

| Materials         |                         |
|-------------------|-------------------------|
| Housing           | POM                     |
| Inner pipe        | Wrought aluminium alloy |
| Screwed trunnion  | POM                     |
| Cushioning insert | Polyurethane foam       |
| Note on materials | Free of copper and PTFE |

| Dimensions |      | Download CAD data → <a href="http://www.festo.com">www.festo.com</a> |
|------------|------|--|
| UOM        | UOMS |  |
|            |      |  |

| Ordering data             |      |    |      |     |      |          |          |
|---------------------------|------|----|------|-----|------|----------|----------|
| Pneumatic connection      | D    | D2 | L    | L1  | L2   | Part no. | Type     |
| D1                        | Ø    | Ø  |      |     |      |          |          |
| <b>Silencers</b>          |      |    |      |     |      |          |          |
| G1/4                      | 17.8 | –  | 73   | 8   | 10   | 538432   | UOM-1/4  |
| G3/8                      | 23.8 | –  | 74   | 8.6 | 10.5 | 538433   | UOM-3/8  |
| <b>Silencer extension</b> |      |    |      |     |      |          |          |
| For UOM-1/4               | 17.8 | 16 | 64.5 | –   | 10   | 538436   | UOMS-1/4 |
| For UOM-3/8               | 23.8 | 22 | 65.2 | –   | 10.5 | 538437   | UOMS-3/8 |