

## Gear units EMGA/EMGC

**FESTO**



Festo core product range  
Covers 80% of your automation tasks

Worldwide:

Always in stock

Superb:

Festo quality at an attractive price

Easy:

Simplified procurement and warehousing

★ Generally ready for shipping ex works in 24 hours

In stock at 13 Service Centres worldwide

More than 2200 products

★ Generally ready for shipping ex works in 5 days

Assembled for you at 4 Service Centres worldwide

Up to  $6 \times 10^{12}$  variants per product family

Just look  
for the  
star!

## Key features

EMGA-...-P-...

→ Page 3

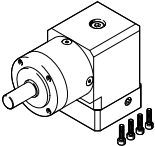


- Planetary gear, straight
- Gear ratio  $i = 3; 5$
- Life-time lubrication
- Degree of protection: IP54

For servo motor EMME-AS, EMMS-AS, EMMT-AS  
For stepper motor EMMS-ST

EMGA-...-A-...

→ Page 9



- Right-angle gear unit
- Gear ratio  $i = 3; 5$
- Life-time lubrication
- Degree of protection: IP54

For servo motor EMME-AS, EMMT-AS

EMGC-...-P-...-SEC

→ Page 12



- Planetary gear, straight
- Single-stage or two-stage
- Gear ratio  $i = 3; 4; 5; 7; 12; 16; 20; 25; 35; 40$
- Life-time lubrication
- Degree of protection: IP54

For integrated drive EMCA


EMGC-...-A-...-SEC

→ Page 17



- Right-angle gear unit
- Gear ratio  $i = 1$
- Life-time lubrication
- Degree of protection: IP54

For integrated drive EMCA

 **Note**

Other ratios and versions on request

## Type codes

<b>001</b>	Series	
<b>EMGA</b>	Gear unit	

<b>002</b>	Gear unit flange size	
<b>40</b>	40	
<b>60</b>	60	
<b>80</b>	80	
<b>120</b>	120	
<b>160</b>	160	

<b>003</b>	Gear unit type	
<b>P</b>	Planetary gear unit	
<b>A</b>	Right-angle gear unit	

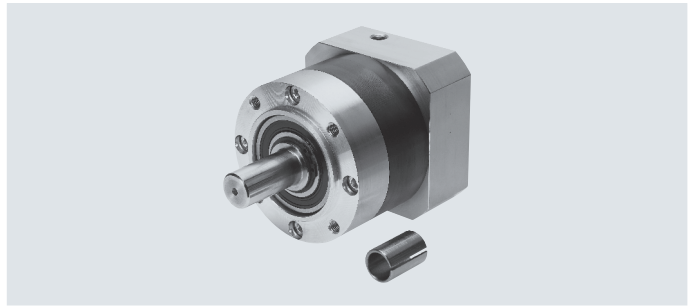
<b>004</b>	Gear ratio	
<b>G3</b>	3:1	
<b>G5</b>	5:1	

<b>005</b>	Interface	
<b>EAS</b>	Eco AC synchronous	
<b>SAS</b>	AC synchronous	
<b>SST</b>	Stepper motor	

<b>006</b>	Flange size, motors	
<b>40</b>	40	
<b>42</b>	42	
<b>55</b>	55	
<b>57</b>	57	
<b>60</b>	60	
<b>70</b>	70	
<b>80</b>	80	
<b>87</b>	87	
<b>100</b>	100	
<b>140</b>	140	

## Data sheet

- For servo motor:  
EMME-AS, EMMS-AS, EMMT-AS
- For stepper motor:  
EMMS-ST



Technical data							
Gear unit size	[mm]	ø 40		ø 60		ø 60	
Gear ratio	[i]	3	5	3	5	3	5
Output interface		40G		60H		60G	
Motor interface		EAS-40, SAS-40		EAS-60		SAS-55, SAS-70, SST-57	
Gear unit type		Planetary gear					
		Single-stage					
Continuous output torque <sup>1)</sup>	[Nm]	11	14	28	40	22	
Max. output torque <sup>2)</sup>	[Nm]	17.6	22	45	64	35.2	
Max. drive speed	[rpm]	18000		13000		13000	
Torsional rigidity	[Nm/arcmin]	1		2.3		2.3	
Torsional backlash	[deg]	0.25		0.17		0.17	
Mass moment of inertia <sup>3)</sup>	[kgcm <sup>2</sup> ]	0.031	0.019	0.135	0.078	0.135	0.078
Max. efficiency	[%]	98					
Operating temperature <sup>4)</sup>	[°C]	-25 ... +90					
Degree of protection		IP54					
Product weight	[g]	350		900		900	
Note on materials		RoHS-compliant					

Gear unit size	[mm]	ø 80		ø 120		ø 160	
Gear ratio	[i]	3	5	3	5	3	5
Output interface		80G		120G		160G	
Motor interface		EAS-80, SAS-70, SAS-100, SST-87		SAS-100, SAS-140		SAS-140	
Gear unit type		Planetary gear					
		Single-stage					
Continuous output torque <sup>1)</sup>	[Nm]	85	110	115	195	400	450
Max. output torque <sup>2)</sup>	[Nm]	136	176	184	312	640	720
Max. drive speed	[rpm]	7000		6500		6500	
Torsional rigidity	[Nm/arcmin]	6		12		38	
Torsional backlash	[deg]	0.12		0.12		0.1	
Mass moment of inertia <sup>3)</sup>	[kgcm <sup>2</sup> ]	0.77	0.45	2.63	1.53	12.14	6.07
Max. efficiency	[%]	98					
Operating temperature <sup>4)</sup>	[°C]	-25 ... +90					
Degree of protection		IP54		IP54			
Product weight	[g]	2100		6000		18000	
Note on materials		RoHS-compliant					

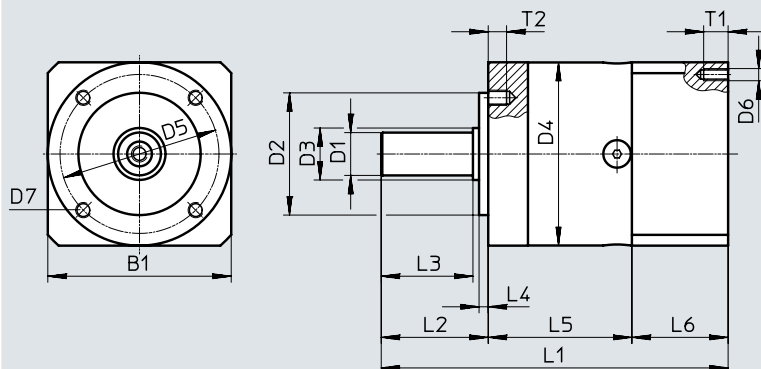
- 1) At the output shaft
- 2) The specifications refer to an output shaft speed of 100 rpm as well as operating mode S1 and a temperature of 30 °C
- 3) In relation to the drive shaft
- 4) Note the temperature range of the motor

## Data sheet

## Dimensions

Download CAD data → [www.festo.com](http://www.festo.com)

EMGA-... for servo motors EMME-AS, EMMT-AS



Type	Interface		B1	D1 ∅ H7	D2 ∅ H7	D3 ∅	D4 ∅	D5 ∅	D6
	Output	Motor							
EMGA-40-P-G...-EAS-40	40G	EAS-40	40	10	26	12	40	34	M3
EMGA-60-P-G...-EAS-60	60H	EAS-60	60	14	40	17	60	52	M4
EMGA-80-P-G...-EAS-80	80G	EAS-80	80	20	60	25	80	70	M5
EMGA-80-P-G...-SAS-100	80G	SAS-100	100	20	60	25	80	70	M8
EMGA-120-P-G...-SAS-100	120G	SAS-100	115	25	80	35	115	100	M8

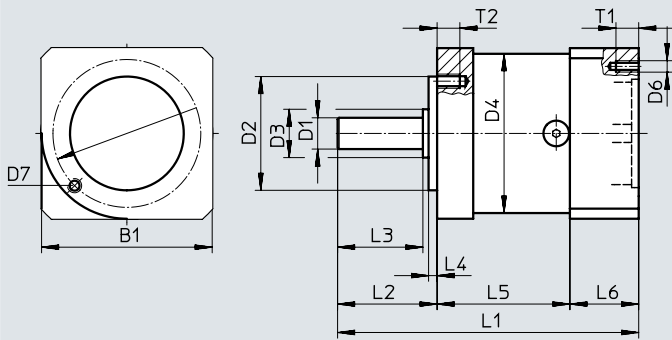
Type	D7	L1	L2	L3	L4	L5	L6	T1	T2
				±0.2	±0.2				
EMGA-40-P-G...-EAS-40	M4	93.5	26	23	2	39	28.5	8	6
EMGA-60-P-G...-EAS-60	M5	113.5	35	30	3	47	31	10	8
EMGA-80-P-G...-EAS-80	M6	138.5	40	36	3	60	38.5	12	10
EMGA-80-P-G...-SAS-100	M6	143.5	40	36	3	60	43.5	16	10
EMGA-120-P-G...-SAS-100	M10	176.5	55	50	4	74	47.5	20	16

Data sheet

Dimensions

Download CAD data → [www.festo.com](http://www.festo.com)

EMGA-... for servo motors EMMS-AS



Type	Interface		B1	D1 ø H7	D2 ø H7	D3 ø	D4 ø	D5 ø	D6
	Output	Motor							
EMGA-40-P-G...SAS-40	40G	SAS-40	40	10	26	12	40	34	M3
EMGA-60-P-G...SAS-55	60G	SAS-55	60	11	40	17	60	52	M5
EMGA-60-P-G...SAS-70	60G	SAS-70	70	11	40	17	60	52	M5
EMGA-80-P-G...SAS-70	80G	SAS-70	80	20	60	25	80	70	M5
EMGA-80-P-G...SAS-100	80G	SAS-100	100	20	60	25	80	70	M8
EMGA-120-P-G...SAS-100	120G	SAS-100	115	25	80	35	115	100	M8
EMGA-120-P-G...SAS-140	120G	SAS-140	140	25	80	35	115	100	M10
EMGA-160-P-G...SAS-140	160G	SAS-140	140	40	130	55	160	145	M10

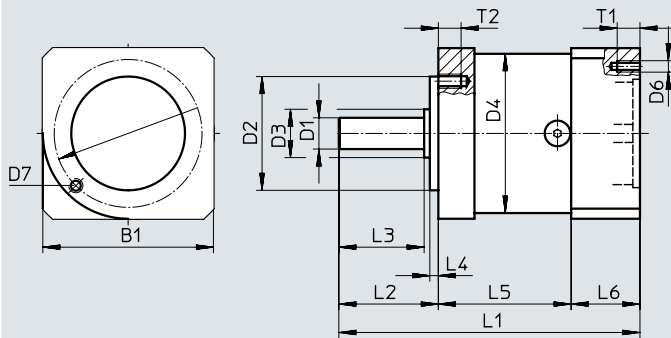
Type	D7	L1	L2	L3	L4	L5	L6	T1	T2
EMGA-40-P-G...SAS-40	M4	88.5±1.5	26±0.6	23	2	39	23.5	6	6
EMGA-60-P-G...SAS-55	M5	106±1.5	35±0.8	30	3	47	24	12	8
EMGA-60-P-G...SAS-70	M5	106±1.5	35±0.8	30	3	47	24	12	8
EMGA-80-P-G...SAS-70	M6	133.5±1.5	40±0.8	36	3	60	33.5	12	10
EMGA-80-P-G...SAS-100	M6	143.5±1.5	40±0.8	36	3	60	43.5	16	10
EMGA-120-P-G...SAS-100	M10	176.5±2	55±0.8	50	4	74	47.5	20	16
EMGA-120-P-G...SAS-140	M10	186±2	55±0.8	50	4	74	57.5	25	16
EMGA-160-P-G...SAS-140	M12	255.5±2	87±0.8	80	5	104	64.5	25	20

Data sheet

Dimensions

Download CAD data → [www.festo.com](http://www.festo.com)

EMGA-... for stepper motors EMMS-ST



Type	Interface		B1	D1 ∅ H7	D2 ∅ H7	D3 ∅	D4 ∅	D5 ∅	D6
	Output	Motor							
EMGA-40-P-G...-SST-42	40G	SST-42	40	10	26	12	40	34	∅3.4
EMGA-60-P-G...-SST-57	60G	SST-57	60	11	40	17	60	52	M4
EMGA-80-P-G...-SST-87	80G	SST-87	90	20	60	25	80	70	M5

Type	D7	L1	L2	L3	L4	L5	L6	T1	T2
		±1.5		±0.2	±0.2				
EMGA-40-P-G...-SST-42	M4	92.5	26±0.6	23	2	39	27.5	5	6
EMGA-60-P-G...-SST-57	M5	106	35±0.8	30	3	47	24	8	8
EMGA-80-P-G...-SST-87	M6	135.5	40±0.8	36	3	60	35.5	12	10

## Data sheet

Ordering data	Gear ratio	Interface		Part no.	Type
		Output	Motor		
<b>For servo motor</b>					
EMME-AS-40	3	40G	EAS-40	★ 2297684	EMGA-40-P-G3-EAS-40
	5	40G	EAS-40	★ 2297685	EMGA-40-P-G5-EAS-40
EMME-AS-60, EMMT-AS-60,	3	60H	EAS-60	★ 2297686	EMGA-60-P-G3-EAS-60
	5	60H	EAS-60	★ 2297687	EMGA-60-P-G5-EAS-60
EMME-AS-80	3	80G	EAS-80	★ 2297690	EMGA-80-P-G3-EAS-80
	5	80G	EAS-80	★ 2297691	EMGA-80-P-G5-EAS-80
EMMS-AS-40	3	40G	SAS-40	552186	EMGA-40-P-G3-SAS-40
	5	40G	SAS-40	552187	EMGA-40-P-G5-SAS-40
EMMS-AS-55	3	60G	SAS-55	552188	EMGA-60-P-G3-SAS-55
	5	60G	SAS-55	552189	EMGA-60-P-G5-SAS-55
EMMS-AS-70	3	60G	SAS-70	552190	EMGA-60-P-G3-SAS-70
	5	60G	SAS-70	552191	EMGA-60-P-G5-SAS-70
EMMS-AS-70	3	80G	SAS-70	552192	EMGA-80-P-G3-SAS-70
	5	80G	SAS-70	552193	EMGA-80-P-G5-SAS-70
EMME-AS-100, EMMS-AS-100	3	80G	SAS-100	★ 552194	EMGA-80-P-G3-SAS-100
	5	80G	SAS-100	★ 552195	EMGA-80-P-G5-SAS-100
	3	120G	SAS-100	★ 552196	EMGA-120-P-G3-SAS-100
	5	120G	SAS-100	★ 552197	EMGA-120-P-G5-SAS-100
EMMS-AS-140	3	120G	SAS-140	552198	EMGA-120-P-G3-SAS-140
	5	120G	SAS-140	552199	EMGA-120-P-G5-SAS-140
	3	160G	SAS-140	552200	EMGA-160-P-G3-SAS-140
	5	160G	SAS-140	552201	EMGA-160-P-G5-SAS-140
<b>For stepper motor</b>					
EMMS-ST-42	3	40G	SST-42	★ 549428	EMGA-40-P-G3-SST-42
	5	40G	SST-42	★ 549429	EMGA-40-P-G5-SST-42
EMMS-ST-57	3	60G	SST-57	★ 549430	EMGA-60-P-G3-SST-57
	5	60G	SST-57	★ 549431	EMGA-60-P-G5-SST-57
EMMS-ST-87	3	80G	SST-87	★ 549432	EMGA-80-P-G3-SST-87
	5	80G	SST-87	★ 549433	EMGA-80-P-G5-SST-87

Festo core product range



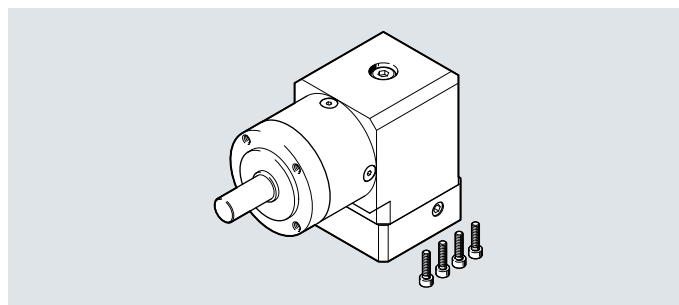
Generally ready for shipping ex works in 24 hours

Generally ready for shipping ex works in 5 days



## Data sheet

- For servo motor:  
EMME-AS, EMMT-AS



Technical data					
Gear unit size	[mm]	∅ 40		∅ 60	
Gear ratio	[i]	3	5	3	5
Output interface		40G		60H	
Motor interface		40P		60P	
Gear unit type		Right-angle gear unit			
		Single-stage			
Continuous output torque <sup>1)</sup>	[Nm]	4.5	7.5	14	24
Max. output torque <sup>2)</sup>	[Nm]	7	12	22	38
Max. drive speed	[rpm]	18000		13000	
Torsional rigidity	[Nm/arcmin]	0.8		2	1.9
Torsional backlash	[deg]	0.35		0.27	
Mass moment of inertia <sup>3)</sup>	[kgcm <sup>2</sup> ]	0.049	0.035	0.394	0.257
Max. efficiency	[%]	95			
Operating temperature <sup>4)</sup>	[°C]	-25 ... +90			
Degree of protection		IP54			
Product weight	[g]	500		1700	
Note on materials		RoHS-compliant			

Gear unit size	[mm]	∅ 80			
Gear ratio	[i]	3		5	
Output interface		80G			
Motor interface		80P, 100A			
Gear unit type		Right-angle gear unit			
		Single-stage			
Continuous output torque <sup>1)</sup>	[Nm]	40		67	
Max. output torque <sup>2)</sup>	[Nm]	64		107	
Max. drive speed	[rpm]	3500		3600	
Torsional rigidity	[Nm/arcmin]	5		4.8	
Torsional backlash	[deg]	0.22			
Mass moment of inertia <sup>3)</sup>	[kgcm <sup>2</sup> ]	1.409		1.017	
Max. efficiency	[%]	95			
Operating temperature <sup>4)</sup>	[°C]	-25 ... +90			
Degree of protection		IP54			
Product weight	[g]	4300			
Note on materials		RoHS-compliant			

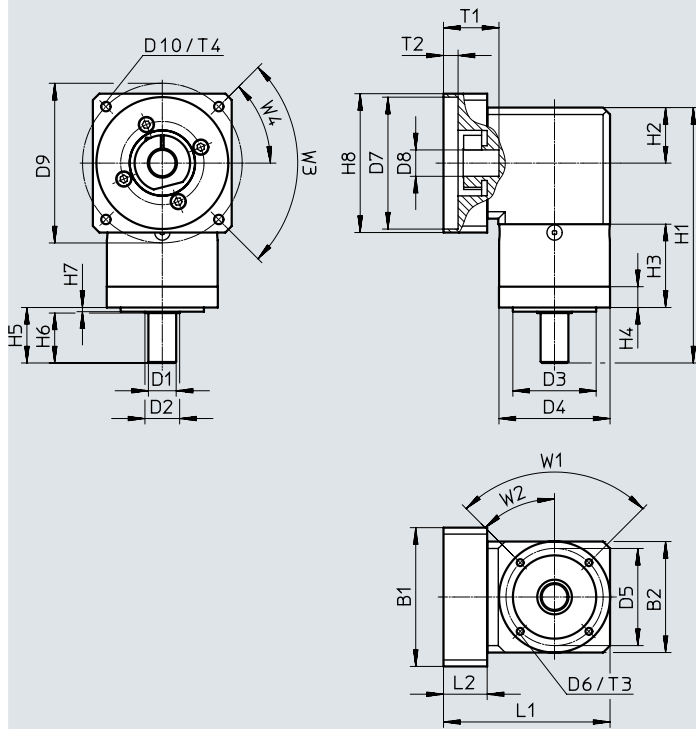
- 1) At the output shaft
- 2) The specifications refer to an output shaft speed of 100 rpm as well as operating mode S1 and a temperature of 30 °C
- 3) In relation to the drive shaft
- 4) Note the temperature range of the motor

Data sheet

Dimensions

Download CAD data → [www.festo.com](http://www.festo.com)

EMGA-... for servo motors EMME-AS, EMMT-AS



Type	Interface		B1	B2	D1 ∅ H7	D2 ∅	D3 ∅ H7	D4 ∅
	Output	Motor						
EMGA-40-A-G...-40P	40G	40P	40	40	10	12	26	40 -0.3
EMGA-60-A-G...-60P	60H	60P	60	60	14	17	40	60 -0.3
EMGA-80-A-G...-80P	80G	80P	80	80	20	25	60	80 -0.4
EMGA-80-A-G...-100A	80G	100 A	100	100	20	25	60	80 -0.4

Type	D5 ∅	D6	D7 +0.05/+0.02	D8	D9	D10	H1 ±1.5	H2
EMGA-40-A-G...-40P	34	M4	30	8	45	M3	110	20+0.5/-0.7
EMGA-60-A-G...-60P	52	M5	50	14	70	M4	146.8	30
EMGA-80-A-G...-80P	70	M6	70	19	90	M5	183.9	40
EMGA-80-A-G...-100A	70	M6	95	19	115	M6	183.9	40

Type	H3 ±0.2	H4	H5	H6 ±0.2	H7 ±0.2	H8	L1	L2
EMGA-40-A-G...-40P	39	10.2	26±0.6	23	2	40	67	19
EMGA-60-A-G...-60P	46.8	12.7	35±0.8	30	3	60	92.5	23
EMGA-80-A-G...-80P	59.9	15	40±0.8	36	3	80	110	21.5
EMGA-80-A-G...-100A	59.9	15	40±0.8	36	3	100	120	31.5

Type	T1	T2	T3	T4	W1	W2	W3	W4
EMGA-40-A-G...-40P	25+2.5/+0.5	3.5	6	8	90°	45°	90°	45°
EMGA-60-A-G...-60P	30+2/+0.5	4	8	10	90°	45°	90°	45°
EMGA-80-A-G...-80P	30+2/+0.5	4.4	10	12	90°	45°	90°	45°
EMGA-80-A-G...-100A	40+2/+0.5	10.4	10	20	90°	45°	90°	45°

## Data sheet

Ordering data	Gear ratio	Interface		Part no.	Type
		Output	Motor		
<b>For servo motor</b>					
EMME-AS-40	3	40G	40P	<b>8085342</b>	<b>EMGA-40-A-G3-40P</b>
	5	40G	40P	<b>8085343</b>	<b>EMGA-40-A-G5-40P</b>
EMME-AS-60, EMMT-AS-60	3	60H	60P	<b>8085344</b>	<b>EMGA-60-A-G3-60P</b>
	5	60H	60P	<b>8085345</b>	<b>EMGA-60-A-G5-60P</b>
EMME-AS-80	3	80G	80P	<b>8085346</b>	<b>EMGA-80-A-G3-80P</b>
	5	80G	80P	<b>8085347</b>	<b>EMGA-80-A-G5-80P</b>
EMME-AS-100, EMMS-AS-100	3	80G	100 A	<b>8085348</b>	<b>EMGA-80-A-G3-100A</b>
	5	80G	100 A	<b>8085349</b>	<b>EMGA-80-A-G5-100A</b>

Type codes

001	Series
EMGC	Gear unit

002	Gear unit flange size
40	40
60	60
67	67

003	Gear unit characteristic
	Standard

004	Gear unit type
A	Right-angle gear unit
P	Planetary gear unit

005	Gear ratio
G1	1:1
G3	3:1
G4	4:1
G5	5:1
G7	7:1
G10	10:1
G12	12:1
G16	16:1
G20	20:1
G25	25:1
G35	35:1
G40	40:1

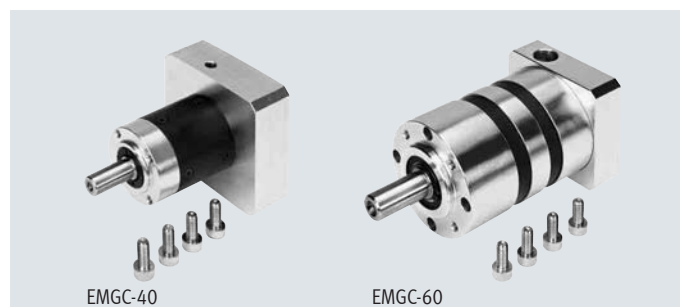
006	Interface
SEC	EC motor

007	Flange size, motors
67	67

## Data sheet

- For integrated drive:  
EMCA-EC-67



Technical data											
Gear unit size	[mm]	ø 40									
Gear ratio	[i]	3	4	5	7	12	16	20	25	35	
Output interface		40G									
Motor interface		SEC-67									
Gear unit type		Planetary gear									
		Single-stage					Two-stage				
Continuous output torque <sup>1)</sup>	[Nm]	5	6.5	6.5	6.5	10	14	14	14	14	
Max. output torque <sup>2)</sup>	[Nm]	10	13	13	13	12.5	17.5	17.5	17.5	17.5	
Max. drive speed <sup>3)</sup>	[rpm]	6000									
Torsional rigidity	[Nm/arcmin]	0.85	0.85	0.85	0.65	0.85					
Max. torsional backlash	[deg]	0.5					0.67				
Mass moment of inertia <sup>4)</sup>	[kgcm <sup>2</sup> ]	0.06	0.04	0.04	0.04	0.04					
Max. efficiency	[%]	94					92				
Operating temperature <sup>5)</sup>	[°C]	-20 ... +90									
Degree of protection		IP54									
Product weight	[g]	450					550				
Note on materials		RoHS-compliant									
		Contains paint-wetting impairment substances									

- At the output shaft
- In relation to a rotational speed of 3000 rpm and operating mode S1
- The permissible operating temperature may not be exceeded
- In relation to the drive shaft
- Note the temperature range of the motor

Technical data													
Gear unit size	[mm]	ø 60											
Gear ratio	[i]	3	4	5	7	10	12	16	20	25	35	40	
Output interface		60H											
Motor interface		SEC-67											
Gear unit type		Planetary gear											
		Single-stage						Two-stage					
Continuous output torque <sup>1)</sup>	[Nm]	20	26	26	26	16	36	42	42	44	44	42	
Max. output torque <sup>2)</sup>	[Nm]	36	44	44	44	24	45	52	52	55	55	52	
Max. drive speed <sup>3)</sup>	[rpm]	6000											
Torsional rigidity	[Nm/arcmin]	2.4	2.4	2.4	1.7	1.3	2.4						
Max. torsional backlash	[deg]	0.5						0.67					
Mass moment of inertia <sup>4)</sup>	[kgcm <sup>2</sup> ]	0.4	0.34	0.32	0.3	0.29	0.34	0.34	0.32	0.32	0.3	0.29	
Max. efficiency	[%]	94						92					
Operating temperature <sup>5)</sup>	[°C]	-20 ... +90											
Degree of protection		IP54											
Product weight	[g]	900						1200					
Note on materials		RoHS-compliant											
		Contains paint-wetting impairment substances											

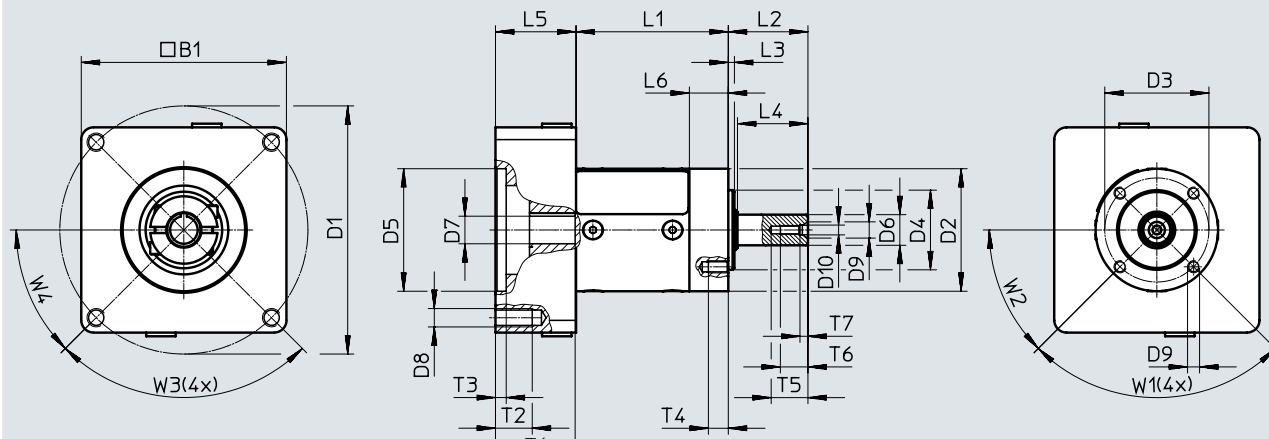
- At the output shaft
- In relation to a rotational speed of 3000 rpm and operating mode S1
- The permissible operating temperature may not be exceeded
- In relation to the drive shaft
- Note the temperature range of the motor

Data sheet

Dimensions

Download CAD data → [www.festo.com](http://www.festo.com)

EMGC-40-P-... for integrated drives EMCA-EC-67



Type	Interface		B1	D1 ∅	D2 ∅ -0.1	D3 ∅ ±0.1	D4 ∅ H6	D5 ∅ G7	D6 ∅ H7	D7 ∅ G6
	Output	Motor								
EMGC-40-P-...-SEC-67	40G	SEC-67	67	81	40	34	26	40	10	9

Type	D8	D9	D10 ∅	D11 ∅	L2 -0.3	L3	L4 -0.1	L5	L6	T1 min.
EMGC-40-P-...-SEC-67	M6	M4	5.3	3.2	26	2	23	26.3	12.7	26

Type	T2 min.	T3 +0.5	T4 min.	T5 min.	T6 min.	T7	W1	W2	W3	W4
EMGC-40-P-...-SEC-67	13	3.5	6.5	12	9	2.6	90°	45°	90°	45°

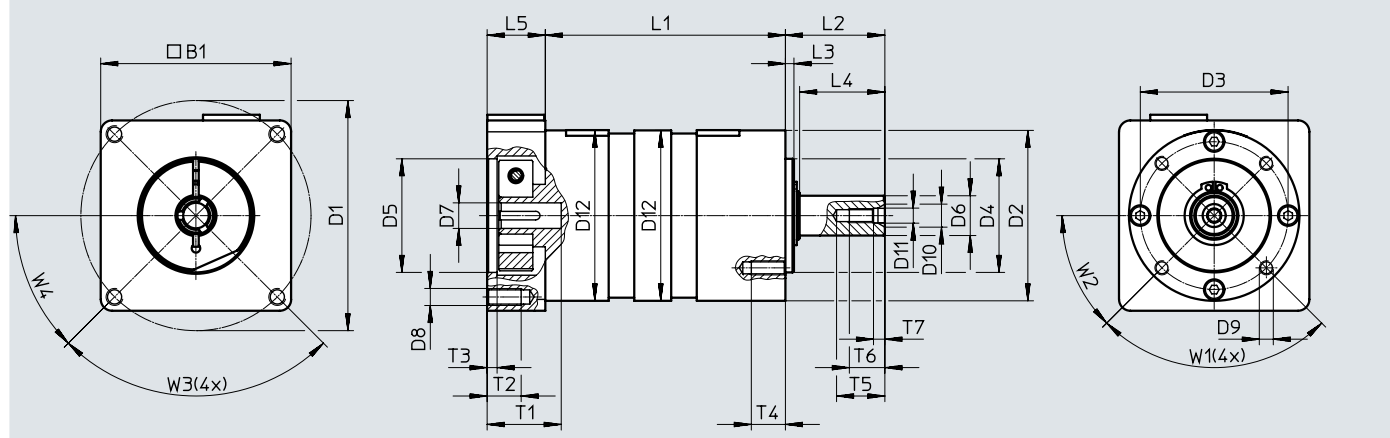
Type	L1 ±0.5
EMGC-40-P-G3-SEC-67	49.7
EMGC-40-P-G4-SEC-67	
EMGC-40-P-G5-SEC-67	
EMGC-40-P-G7-SEC-67	65.3
EMGC-40-P-G12-SEC-67	
EMGC-40-P-G16-SEC-67	
EMGC-40-P-G20-SEC-67	
EMGC-40-P-G25-SEC-67	
EMGC-40-P-G35-SEC-67	

Data sheet

Dimensions

Download CAD data → [www.festo.com](http://www.festo.com)

EMGC-60-P-... for integrated drives EMCA-EC-67



Type	Interface		B1	D1 ∅	D2 ∅ -0.1	D3	D4 ∅ H6	D5 ∅ G7	D6 ∅ H6
	Output	Motor							
EMGC-60-P-...-SEC-67	60H	SEC-67	67	81	60	52	40	40	14

Type	D7 ∅ G6	D8	D9	D10 ∅	D11 ∅	D12 ∅ +0.1	L2 -0.3	L3	L4 -0.1	L5
EMGC-60-P-...-SEC-67	9	M6	M5	8.1	5.3	60	35	3	30	20.5

Type	T1 min.	T2 min.	T3 +0.5	T4 min.	T5 min.	T6 min.	T7 +1	W1	W2	W3	W4
EMGC-60-P-...-SEC-67	26	13	3.5	12	17	12.5	4	90°	45°	90°	45°

Type	L1 ±0.5
EMGC-60-P-G3-SEC-67	62.5
EMGC-60-P-G4-SEC-67	
EMGC-60-P-G5-SEC-67	
EMGC-60-P-G7-SEC-67	
EMGC-60-P-G10-SEC-67	84.5
EMGC-60-P-G12-SEC-67	
EMGC-60-P-G16-SEC-67	
EMGC-60-P-G20-SEC-67	
EMGC-60-P-G25-SEC-67	
EMGC-60-P-G35-SEC-67	
EMGC-60-P-G40-SEC-67	

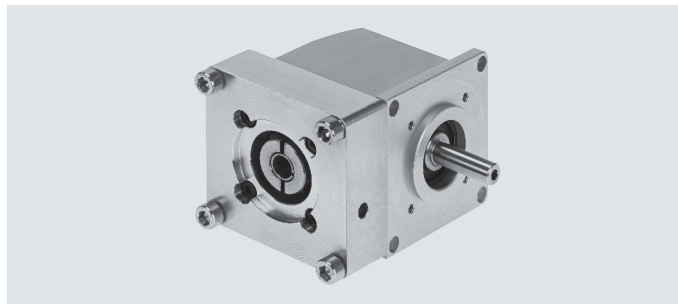
Data sheet

Ordering data For integrated drive	Gear ratio		Interface		Part no.	Type			
			Output	Motor					
EMCA-EC-67	3	Single-stage	40G	SEC-67	8000594	EMGC-40-P-G3-SEC-67			
	4				8000595	EMGC-40-P-G4-SEC-67			
	5				8000596	EMGC-40-P-G5-SEC-67			
	7				8000597	EMGC-40-P-G7-SEC-67			
	12	Two-stage	40G	SEC-67	8000598	EMGC-40-P-G12-SEC-67			
	16				8000599	EMGC-40-P-G16-SEC-67			
	20				8000600	EMGC-40-P-G20-SEC-67			
	25				8000601	EMGC-40-P-G25-SEC-67			
	35				8000602	EMGC-40-P-G35-SEC-67			
EMCA-EC-67	3	Single-stage	60H	SEC-67	8000612	EMGC-60-P-G3-SEC-67			
	4				8000613	EMGC-60-P-G4-SEC-67			
	5				8000614	EMGC-60-P-G5-SEC-67			
	7				8000615	EMGC-60-P-G7-SEC-67			
	10				8000616	EMGC-60-P-G10-SEC-67			
	12				Two-stage	60H	SEC-67	8000617	EMGC-60-P-G12-SEC-67
	16	8000618	EMGC-60-P-G16-SEC-67						
	20	8000619	EMGC-60-P-G20-SEC-67						
	25	8000620	EMGC-60-P-G25-SEC-67						
	35	8000621	EMGC-60-P-G35-SEC-67						
	40	8000622	EMGC-60-P-G40-SEC-67						



## Data sheet

- For integrated drive:  
EMCA-EC-67



Technical data		
Gear unit size	[mm]	67
Gear ratio	[i]	1
Output interface		67A
Motor interface		SEC-67
Gear unit type		Right-angle gear unit Single-stage
Continuous output torque <sup>1)</sup>	[Nm]	2
Max. output torque <sup>2)</sup>	[Nm]	2.1
Max. drive speed <sup>3)</sup>	[rpm]	4500
Torsional rigidity	[Nm/arcmin]	0.105
Max. torsional backlash	[deg]	0.67
Mass moment of inertia <sup>4)</sup>	[kgcm <sup>2</sup> ]	0.09
Max. efficiency	[%]	90
Operating temperature <sup>5)</sup>	[°C]	-20 ... +90
Degree of protection		IP54
Product weight	[g]	930
Note on materials		RoHS-compliant Contains paint-wetting impairment substances

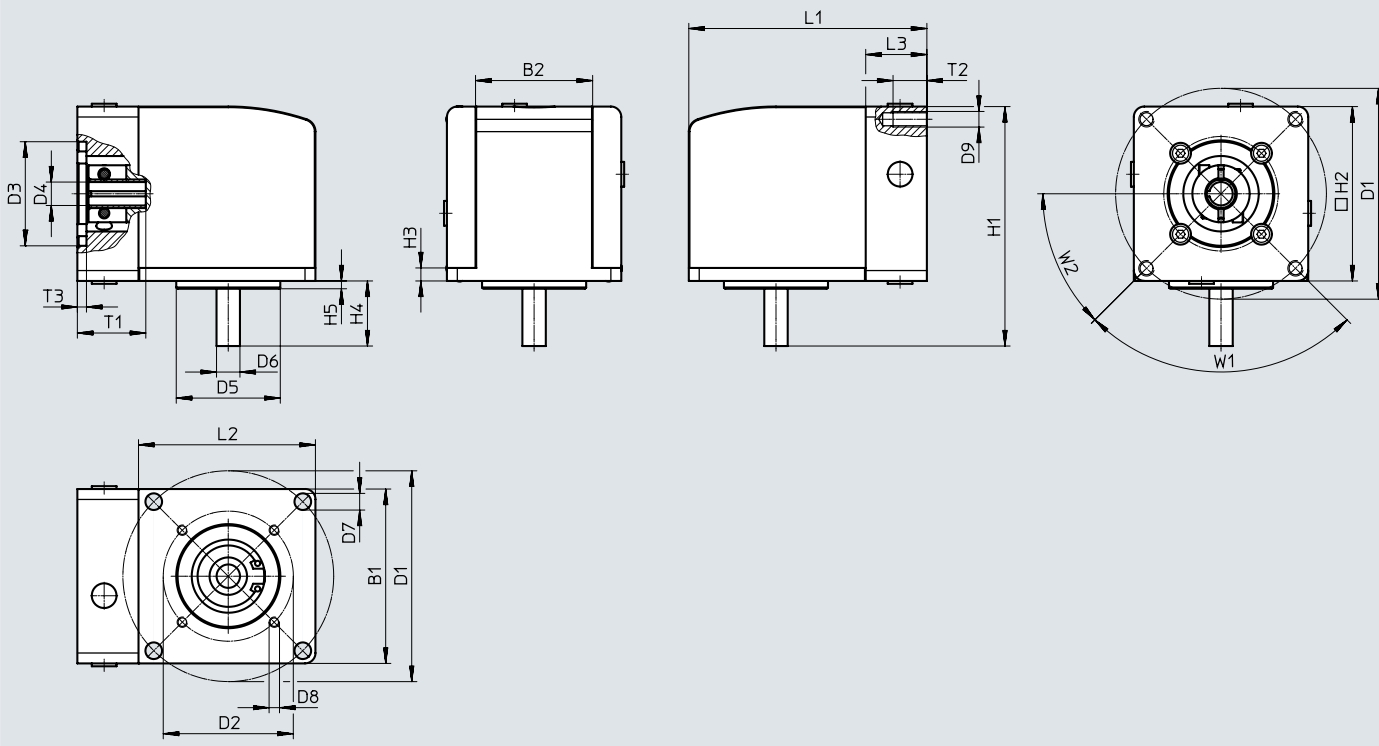
- 1) At the output shaft
- 2) In relation to a rotational speed of 3000 rpm and operating mode S1
- 3) The permissible operating temperature may not be exceeded
- 4) In relation to the drive shaft
- 5) Note the temperature range of the motor

Data sheet

Dimensions

Download CAD data → [www.festo.com](http://www.festo.com)

EMGC-67-... for integrated drives EMCA-EC-67



Type	Interface		B1	B2	D1 ∅	D2 ∅	D3 ∅	D4 ∅
	Output	Motor						
EMGC-67-A-G1-SEC-67	67 A	SEC-67	67	45	81 ±0.1	50 ±0.1	40 G7	9 G6

Type	D5 ∅	D6 ∅	D7 ∅	D8	D9	H1	H2	H3 ±0.1	H4 -0.1
EMGC-67-A-G1-SEC-67	40	9	6.4	M4	M6	92	67	5	25

Type	H5	L1	L2	L3	T1	T2	T3 +0.2	W1	W2
EMGC-67-A-G1-SEC-67	3	91.5	68	23.5	26.3	13	3.5	90°	45°

Ordering data		Interface		Part no.	Type
For integrated drive	Gear ratio	Output	Motor		
EMCA-EC-67	1	67 A	SEC-67	2321480	EMGC-67-A-G1-SEC-67

# Festo - Your Partner in Automation



**1 Festo Inc.**  
5300 Explorer Drive  
Mississauga, ON L4W 5G4  
Canada

**Festo Customer Interaction Center**  
Tel: 1 877 463 3786  
Fax: 1 877 393 3786  
Email: [customer.service.ca@festo.com](mailto:customer.service.ca@festo.com)



**2 Festo Pneumatic**  
Av. Ceylán 3,  
Col. Tequesquináhuac  
54020 Tlalnepantla,  
Estado de México

**Multinational Contact Center**  
01 800 337 8669  
[ventas.mexico@festo.com](mailto:ventas.mexico@festo.com)



**3 Festo Corporation**  
1377 Motor Parkway  
Suite 310  
Islandia, NY 11749

**Festo Customer Interaction Center**  
1 800 993 3786  
1 800 963 3786  
[customer.service.us@festo.com](mailto:customer.service.us@festo.com)



**4 Regional Service Center**  
7777 Columbia Road  
Mason, OH 45040

Connect with us



[www.festo.com/socialmedia](http://www.festo.com/socialmedia)



[www.festo.com](http://www.festo.com)

Subject to change