

Guide axes EGC-FA, without drive

FESTO

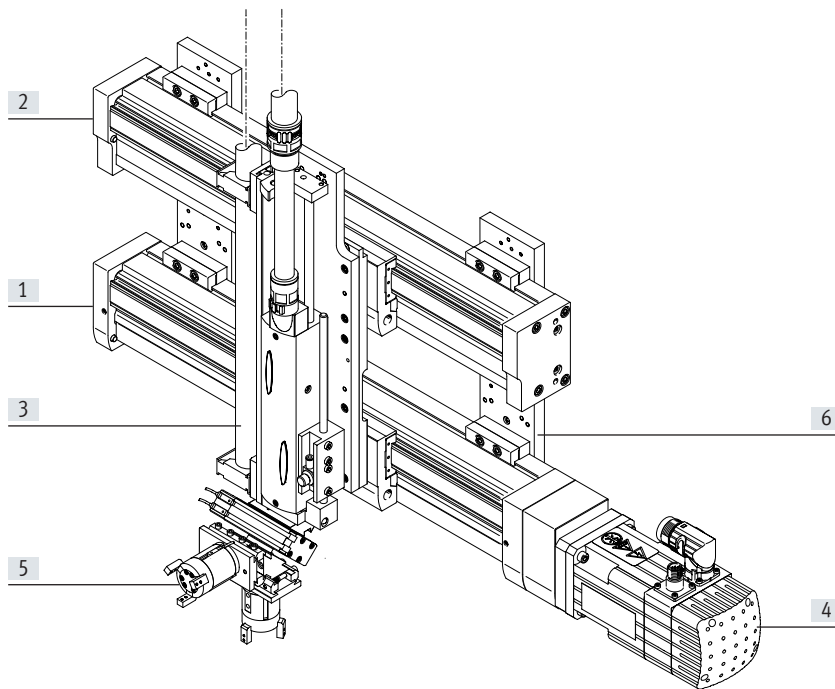


Characteristics

At a glance

- Driveless linear guide units with guide and freely movable slide
- The guide axis is designed to support force and torque capacity in multi-axis applications
- Higher torsional resistance
- Reduced vibrations with dynamic loads
- Drive axis and guide axis can be placed adjacent to or above one another

System product for handling and assembly technology



System components and accessories

| | Description | → Page/Internet |
|----------------|---|-----------------|
| [1] Axes | Wide range of combinations possible within handling and assembly technology | axis |
| [2] Guide axes | To support force and torque capacity in multi-axis applications | guide axis |
| [3] Drives | Wide range of combinations possible within handling and assembly technology | drive |
| [4] Motors | Servo and stepper motors, with or without gear unit | motor |
| [5] Grippers | Wide range of variations possible within handling and assembly technology | gripper |
| [6] Adapters | For drive/drive and drive/gripper connections | adapter kit |

Characteristics

Slide variants

Standard slide



Extended slide



Additional slide



Guide options

Protected version



- The protected guide cleans the guide rail and protects the recirculating ball bearing guide with the aid of an additional wiper seal

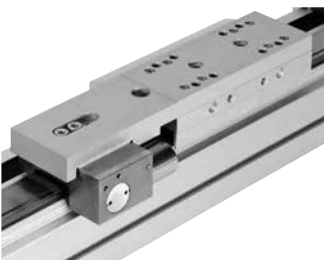
With central lubrication



- The lubrication adapter enables the guide to be permanently lubricated using semi or fully automatic relubrication devices
- The adapters are suitable for oils and greases
- Both lubrication adapters must be connected

Clamping unit

→ Page 8



- 1- or 2-channel design, for holding loads
- Reliable holding is guaranteed since the forces act directly on the slide
- A limited number of emergency braking operations are permissible with sizes 120 and 185

Guide axes and the corresponding axes/drives

Guide axis ELFA-RF



- Can be combined with:
 - Toothed belt axis ELGA-TB-RF
- For size 70, 80
- Load capacity up to max. 800 N or 180 Nm

Guide axis DGC-FA



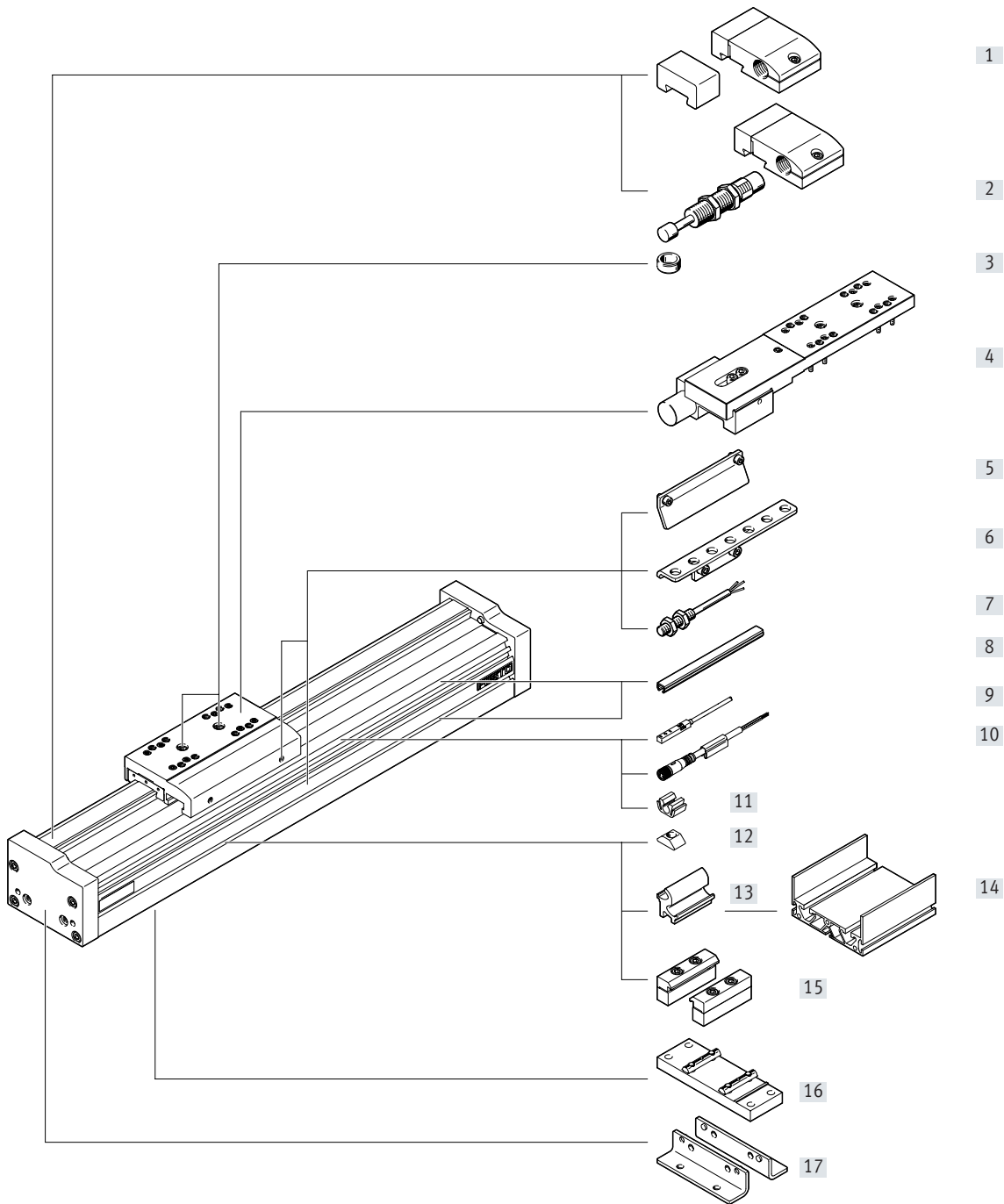
- Can be combined with:
 - Linear drive DGC-KF
- For size 8 ... 63
- Load capacity up to max. 15200 N or 1157 Nm

Guide axis EGC-FA



- Can be combined with:
 - Toothed belt axis EGC-TB
 - Spindle axis EGC-BS
- For size 70 ... 185
- Load capacity up to max. 15200 N or 1157 Nm

Peripherals overview



Peripherals overview

| Variants and accessories | | | |
|--------------------------|--|---|-----------------|
| | Type/order code | Description | → Page/Internet |
| [1] | Emergency buffer with retaining bracket A | For avoiding damage at the end stop in the event of a malfunction | 33 |
| [2] | Shock absorber with retaining bracket C | For avoiding damage at the end stop in the event of a malfunction | 33 |
| [3] | Centring pin/sleeve ZBS, ZBH | <ul style="list-style-type: none"> For centring loads and attachments on the slide Included in the scope of delivery: <ul style="list-style-type: none"> With size 70: 2x ZBS-5 With size 80, 120, 185: 2x ZBH-9 | 33 |
| [4] | Clamping unit 1H...PN, 2H-PN | For holding loads | 8 |
| [5] | Switch lug X, Z, O, P, W, R | For sensing the slide position | 31 |
| [6] | Sensor bracket O, P, W, R | Adapter for mounting the inductive proximity sensors (round design) on the axis | 32 |
| [7] | Proximity sensor, M8 O, P, W, R | <ul style="list-style-type: none"> Inductive proximity sensor, round design The order code O, P, W, R includes 1 switch lug and max. 2 sensor brackets in the scope of delivery | 35 |
| [8] | Slot cover B, S | <ul style="list-style-type: none"> For protection against dirt | 33 |
| [9] | Proximity sensor, slot type 8 X, Z | <ul style="list-style-type: none"> Inductive proximity sensor, for slot type 8 The order code X, Z includes 1 switch lug in the scope of delivery | 34 |
| [10] | Plug socket with cable V | For proximity sensor (order code W and R) | 35 |
| [11] | Clip CL | For mounting the proximity sensor cable in the slot | 33 |
| [12] | Slot nut Y | For mounting attachments | 33 |
| [13] | Adapter kit DHAM | For mounting the support profile on the axis | 34 |
| [14] | Support profile HMIA | For mounting and guiding an energy chain | 34 |
| [15] | Profile mounting M | For mounting the axis on the side of the profile | 29 |
| [16] | Central support EAHF | For mounting the axis on the bottom of the profile | 30 |
| [17] | Foot mounting F | For mounting the axis on the end cap | 28 |

Type codes

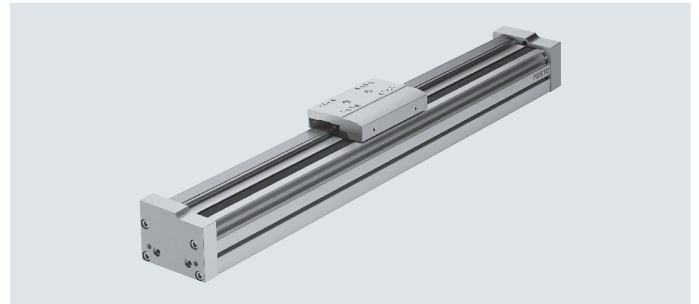
| | | |
|-------------|--------------------------------|--|
| 001 | Series | |
| EGC | Electric linear axis | |
| 002 | Size | |
| 70 | 70 | |
| 80 | 80 | |
| 120 | 120 | |
| 185 | 185 | |
| 003 | Stroke | |
| ... | 50 ... 8500 | |
| 004 | Guide | |
| FA | Guide axis | |
| 005 | Stroke reserve | |
| OH | None | |
| ...H | 0 ... 999 mm | |
| 006 | Slide | |
| GK | Standard slide | |
| GP | Standard slide, protected | |
| 007 | Additional slide | |
| ...K | 1 ... 2 pieces | |
| 008 | Lubrication function | |
| | None | |
| C | Lubrication adapter | |
| 009 | Actuation type | |
| | None | |
| PN | Pneumatically actuated | |
| 010 | Accessories | |
| | None | |
| ZUB | Accessories supplied loose | |
| 011 | Foot mounting | |
| | None | |
| F | 1 record | |
| 012 | Profile mounting | |
| | None | |
| ...M | 1 - 50 pieces | |
| 013 | Mounting slot covering | |
| | None | |
| ...B | 1 ... 50 pieces | |
| 014 | Slot cover, sensor slot | |
| | Without | |
| ...S | 1 - 50 pieces | |

| | | |
|--------------|---|--|
| 015 | Slot nut, mounting slot | |
| | Without | |
| ...Y | 1 ... 99 pieces | |
| 016 | Proximity switch, inductive, slot 8, PNP, N/O contact, cable 7.5 m | |
| | None | |
| ...X | 1 ... 6 pieces | |
| 017 | Proximity switch, inductive, slot 8, N/C contact, cable 7.5 m | |
| | None | |
| ...Z | 1 ... 6 pieces | |
| 018 | Emergency buffer with retaining bracket | |
| | Without | |
| ...A | 1 ... 2 pieces | |
| 019 | Shock absorber with retaining bracket | |
| | None | |
| ...C | 1 ... 2 pieces | |
| 020 | Proximity switch, inductive, M8, PNP, N/O contact, cable 2.5 m | |
| | Without | |
| ...O | 1 ... 99 pieces | |
| 021 | Proximity switch, inductive, M8, PNP, N/C contact, cable 2.5 m | |
| | None | |
| ...P | 1 ... 99 pieces | |
| 022 | Proximity switch, inductive, M8, PNP, N/C contact, M8 plug | |
| | None | |
| ...R | 1 ... 99 pieces | |
| 023 | Proximity switch, inductive, M8, PNP, N/O contact, M8 plug | |
| | Without | |
| ...W | 1 ... 99 pieces | |
| 024 | Connecting cable 2.5 m, M8, 3-wire | |
| | None | |
| ...V | 1 ... 99 pieces | |
| 025 | Cable clip | |
| | None | |
| 10CL | 10 pieces | |
| 20CL | 20 pieces | |
| 30CL | 30 pieces | |
| 40CL | 40 pieces | |
| 50CL | 50 pieces | |
| 60CL | 60 pieces | |
| 70CL | 70 pieces | |
| 80CL | 80 pieces | |
| 90CL | 90 pieces | |
| 100CL | 100 units | |
| 026 | Operating instructions | |
| | With operating instructions | |
| DN | Without operating instructions | |

Data sheet



- Size
70 ... 185
- Stroke length
50 ... 8500 mm
- www.festo.com



| General technical data | | | | | |
|------------------------|---------------------|----------------------------------|-------------|-------------|-------------|
| Size | | 70 | 80 | 120 | 185 |
| Design | | Guide | | | |
| Guide | | Recirculating ball bearing guide | | | |
| Mounting position | | Any | | | |
| Working stroke | | | | | |
| EGC-...-GK/-GP | [mm] | 50 ... 5000 | 50 ... 8500 | 50 ... 8500 | 50 ... 8500 |
| Max. speed | [m/s] | 5 | | | |
| Max. acceleration | [m/s ²] | 50 | | | |

| Operating and environmental conditions | | |
|--|------|-------------|
| Ambient temperature | [°C] | -10 ... +60 |
| Degree of protection | | IP40 |

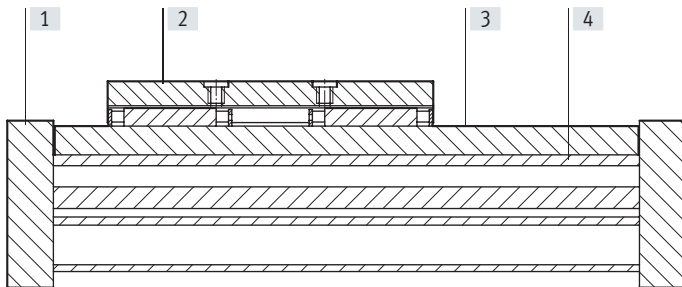
| Weight [kg] | | | | | |
|---|--|------|------|-------|-------|
| Size | | 70 | 80 | 120 | 185 |
| Basic weight with 0 mm stroke ¹⁾ | | | | | |
| EGC-...-GK/-GP | | 1.20 | 2.00 | 7.30 | 20.80 |
| Additional weight per 1000 mm stroke | | 4.20 | 6.20 | 15.00 | 29.00 |
| Moving load | | | | | |
| EGC-...-GK/-GP | | 0.30 | 0.55 | 2.00 | 6.00 |
| Additional slide | | | | | |
| EGC-...-K | | 0.30 | 0.55 | 2.00 | 6.00 |
| Clamping unit | | | | | |
| EGC-...-1H...-PN | | - | 0.70 | 2.30 | 4.90 |
| EGC-...-2H-PN | | - | 1.30 | 4.00 | 8.30 |

1) Including slide

Data sheet

Materials

Sectional view



Axis

| | |
|-------------------|--|
| [1] End cap | Anodised wrought aluminium alloy |
| [2] Slide | Anodised wrought aluminium alloy |
| [3] Guide rail | High-alloy steel |
| [4] Profile | Anodised wrought aluminium alloy |
| Note on materials | RoHS-compliant Contains paint-wetting impairment substances |

Technical data – Clamping unit

Dimensions → page 20

| Size | 80 | 120 | 185 |
|---|--|-----------|-----------|
| Pneumatic connection | M5 | M5 | M5 |
| Clamping type | Clamping via spring force, compressed air to release | | |
| Static holding force | | | |
| EGC...-1H...-PN [N] | 320 | 1200 | 1500 |
| EGC...-2H-PN [N] | 640 | 2400 | 3000 |
| Max. number of emergency braking operations ¹⁾ at reference energy [J] | – | 750 35 | 750 70 |
| Number of clamping operations under rated load [millions of switching cycles] | 0.45 | 0.05 | > 1.4 |

1) Emergency braking refers to braking the payload if the drive axis loses power.

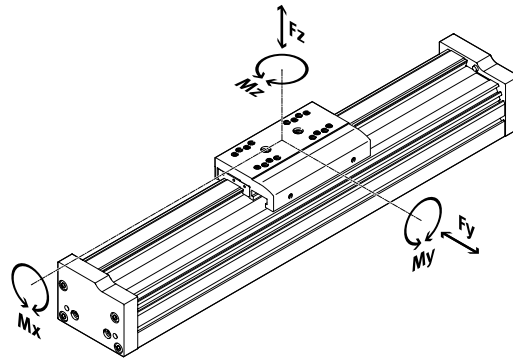
Operating and environmental conditions – Clamping unit

| | |
|----------------------------|---|
| Operating medium | Compressed air to ISO 8573-1:2010 [7:4:4] |
| Operating pressure | |
| Clamping unit open [bar] | 4.5 ... 8 |
| Clamping unit closed [bar] | Unpressurised |
| Ambient temperature [°C] | –10 ... +60 |

Data sheet

Characteristic load values

The indicated forces and torques refer to the slide surface. The point of application of force is the point where the centre of the guide and the longitudinal centre of the slide intersect. These values must not be exceeded during dynamic operation. Special attention must be paid to the deceleration phase.



If the axis is subjected to two or more of the indicated forces and torques simultaneously, the following equation must be satisfied in addition to the indicated maximum loads:

Calculating the load comparison factor:

$$f_v = \frac{|F_{y1}|}{F_{y2}} + \frac{|F_{z1}|}{F_{z2}} + \frac{|M_{x1}|}{M_{x2}} + \frac{|M_{y1}|}{M_{y2}} + \frac{|M_{z1}|}{M_{z2}} \leq 1$$

| Permissible forces and torques | | | 70 | 80 | 120 | 185 |
|--------------------------------|------------|--|------|------|------|-------|
| Size | | | | | | |
| $F_{y\max}$ | [N] | | 1850 | 3050 | 6890 | 15200 |
| $F_{z\max}$ | [N] | | 1850 | 3050 | 6890 | 15200 |
| $M_{x\max}$ | [Nm] | | 16 | 36 | 144 | 529 |
| $M_{y\max}$ | GK/GP [Nm] | | 51 | 97 | 380 | 1157 |
| $M_{z\max}$ | GK/GP [Nm] | | 51 | 97 | 380 | 1157 |

Service life

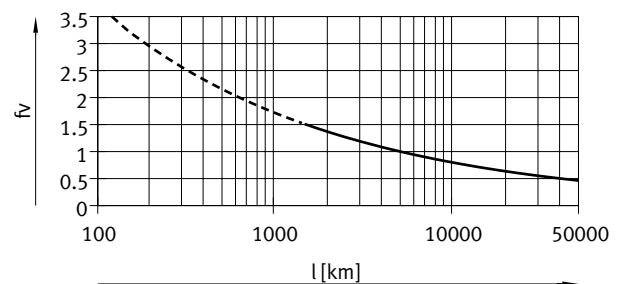
The service life of the guide depends on the load. To provide a rough indication of the service life of the guide, the graph below plots the load comparison factor f_v against the service life.

These values are only theoretical. You must consult your local contact person at Festo for load comparison factors f_v greater than 1.5.

Load comparison factor f_v as a function of service life

Example:

A user wants to move an X kg load. Using the above formula gives a value of 1.5 for the load comparison factor. According to the graph, the guide would have a service life of approx. 1500 km. Reducing the acceleration reduces the M_z and M_y values. A load comparison factor of 1 now gives a service life of 5000 km.



Note

Engineering software
PositioningDrives
www.festo.com

The engineering software can be used to calculate the guide workload for a service life of 5000 km.

$f_v > 1.5$ are only theoretical comparison values for the recirculating ball bearing guide.

Data sheet

Stroke reserve

| Stroke length | Stroke reserve | |
|---------------|----------------|--|
|---------------|----------------|--|

The selected stroke corresponds in principle to the required working stroke. The variant GK does not have a wiper seal on the guide. This variant therefore additionally has a safety distance between the drive cover and slide that is not designated as part of the working stroke.

It is possible to define a safety distance (similar to that for GK) between the drive cover and slide for the variants GP and GK-C using the “stroke reserve” characteristic in the modular product system. For the variant GK, the stroke reserve and safety distance are added for each end position.

- The stroke reserve length can be freely selected
- The sum of the stroke length and 2x stroke reserve must not exceed the maximum working stroke

Example:

EGC-70-500-FA-20H-...
 Working stroke = 500 mm
 2x stroke reserve = 40 mm
 Total length = 540 mm
 (540 mm = 500 mm + 2x 20 mm)

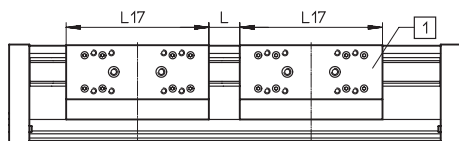
| Size | 70 | 80 | 120 | 185 |
|---|------|----|-----|-----|
| L9 = safety distance for GK (per end position) [mm] | 10.5 | 13 | 18 | 21 |

Working stroke reduction

For standard slide GK/GP with additional slide K

- In the case of a guide axis with additional slide, the working stroke is reduced by the length of the additional slide and the distance between the two slides
- For the variant GP, the additional slide is also protected
- If the variant GK-C is ordered, the additional slide is also supplied with lubrication adapters

L17 = slide length
 L = distance between the two slides
 [1] = additional slide



Example:

Type EGC-70-500-FA-...-GK-1K
 Working stroke without additional slide = 500 mm
 L18 = 20 mm
 L16, L17 = 100 mm
 Working stroke with additional slide = 380 mm
 (500 mm – 20 mm – 100 mm)

Dimensions – Additional slide

| Size | 70 | | 80 | | 120 | | 185 | |
|---|-----|-----|-----|------------|-------|------------|-------|------|
| | GK | GP | GK | GP or GK-C | GK | GP or GK-C | GK | GK-C |
| Length L17 [mm] | 100 | 121 | 120 | 146 | 203.3 | 236 | 282.8 | 322 |
| Min. distance between the slides L18 [mm] | – | 21 | – | 26 | – | 36 | – | 42 |

Data sheet

Working stroke reduction per side

With integrated emergency buffer NPE/shock absorber YSRW with shock absorber retainer KYE

- The working stroke is reduced by the total dimension of the emergency buffer/ shock absorber and shock absorber retainer.
- The rubber buffer in the cover must be removed.
- Shock absorbers must not be used in combination with GK-C.

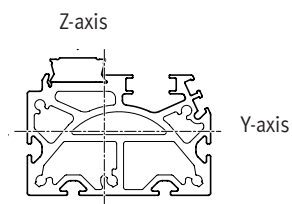
| Size | | 70 | 80 | 120 | 185 |
|-----------------------|------|----|----|-----|-----|
| With emergency buffer | [mm] | 43 | 68 | 98 | 133 |
| With shock absorber | [mm] | 42 | 63 | 84 | 107 |

Working stroke reduction

With integrated clamping unit

- The working stroke is reduced by the length of the clamping unit.
- With 1-channel clamping units, the stroke is reduced on one side with respect to the mounting surface
- With 2-channel clamping units, the stroke is reduced symmetrically with respect to the mounting surface of the load
- Shock absorbers must not be used in combination with the clamping unit.

| Size | | 80 | 120 | 185 |
|-----------------|------|-----|-----|-----|
| EGC...-1H...-PN | [mm] | 87 | 124 | 131 |
| EGC...-2H-PN | [mm] | 174 | 248 | 262 |

2nd moments of area

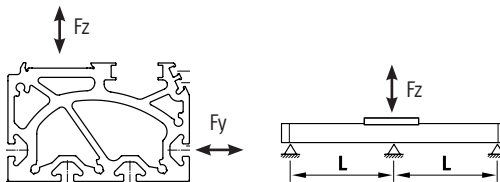
| Size | | 70 | 80 | 120 | 185 |
|----------------|--------------------|----------------------|----------------------|----------------------|----------------------|
| I _y | [mm ⁴] | 3.95x10 ⁵ | 8.44x10 ⁵ | 4.62x10 ⁶ | 2.34x10 ⁷ |
| I _z | [mm ⁴] | 5.77x10 ⁵ | 1.16x10 ⁶ | 5.65x10 ⁶ | 2.74x10 ⁷ |

Data sheet

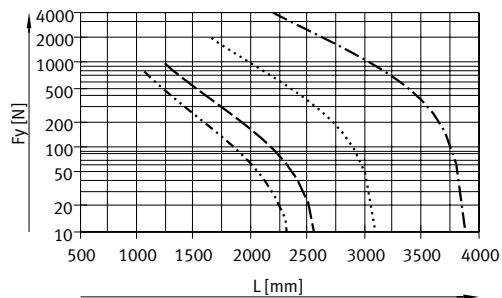
Maximum permissible support spacing L (without profile mounting MUE/central support EAHF) as a function of force F

In order to limit deflection in the case of large strokes, the axis may need to be supported.

The following graphs can be used to determine the maximum permissible support spacing l as a function of force F acting on the axis. The deflection is $f = 0.5 \text{ mm}$.

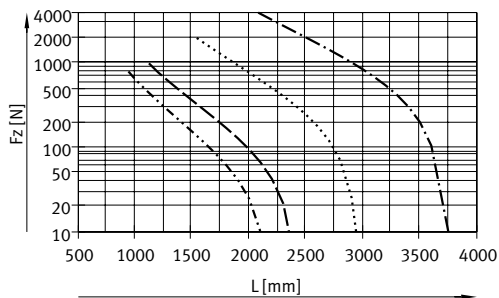


Force F_y



- EGC-70
- · - · - EGC-80
- - - EGC-120
- · · · · EGC-185

Force F_z



Recommended deflection limits

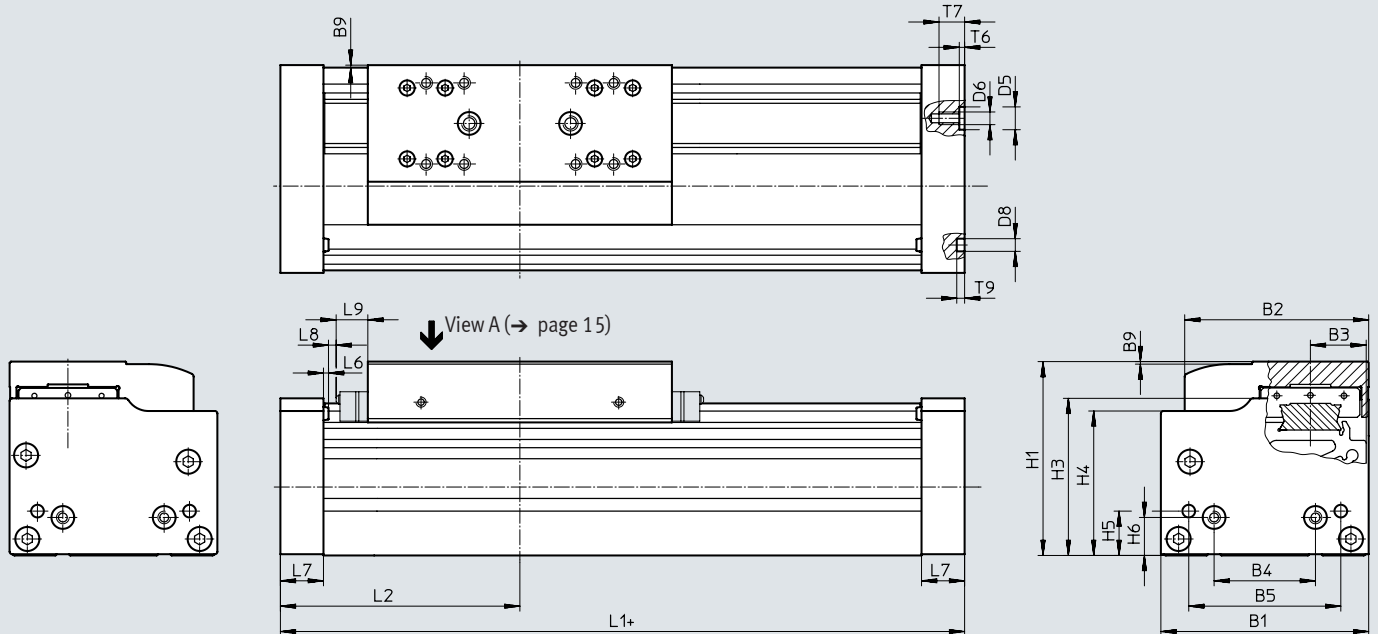
Adherence to the following deflection limits is recommended so as not to impair the functionality of the axes. Greater deformation can result in increased friction, greater wear and reduced service life.

| Size | Dynamic deflection (moving load) | Static deflection (stationary load) |
|------------|---------------------------------------|--|
| 70 ... 185 | 0.05% of the axis length, max. 0.5 mm | 0.1% of the axis length |

Data sheet

Dimensions

Download CAD data → www.festo.com



- + = plus stroke length + 2x stroke reserve
- L9 = for GK: safety distance per end position;
for GP: dimension for wiper seal → page 10;
for GK-C/GV-C: dimension for adapter → page 18

| Size | B1 | B2 | B3 | B4 | B5 | B9 | D5 ∅ H7 |
|------|-----|------|------|-----|----|----|---------------|
| 70 | 69 | 58.6 | 16.5 | 30 | 45 | 1 | – |
| 80 | 82 | 72.6 | 22 | 40 | 60 | 1 | 9 |
| 120 | 120 | 107 | 33 | 80 | 40 | 1 | – |
| 185 | 186 | 169 | 53 | 120 | 80 | 1 | – |

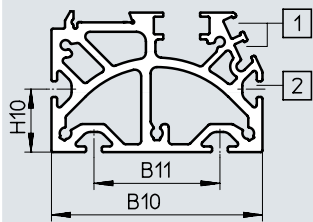
| Size | D6 | D8 ∅ H7 | H1 | H3 | H4 | H5 | H6 | L1 |
|------|-----|---------------|-------|------|-------|------|----|-----|
| 70 | M5 | 5 | 64 | 50.5 | 47 | 13 | 13 | 163 |
| 80 | M5 | 5 | 76.5 | 62 | 57 | 17.5 | 15 | 190 |
| 120 | M8 | 9 | 111.5 | 89 | 82 | 22 | 22 | 306 |
| 185 | M10 | 9 | 172.5 | 141 | 131.5 | 25 | 25 | 406 |

| Size | L2 | L6 | L7 | L8 | L9 | T6 | T7 | T9 |
|------|------|-----|----|----|------|-----|------|-----|
| 70 | 81.5 | 1.8 | 16 | 3 | 10.5 | – | 10 | 3.1 |
| 80 | 95 | 2 | 17 | 3 | 13 | 2.1 | 10.1 | 3.1 |
| 120 | 153 | 2 | 30 | 3 | 18 | – | 16 | 2.1 |
| 185 | 203 | 2 | 37 | 3 | 21 | – | 20 | 2.1 |

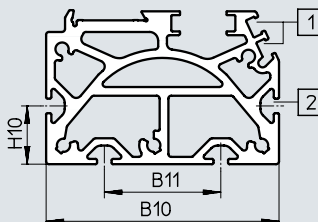
Data sheet

Profile

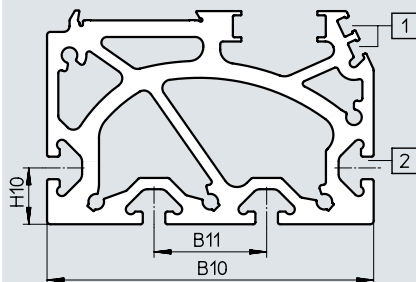
Size 70



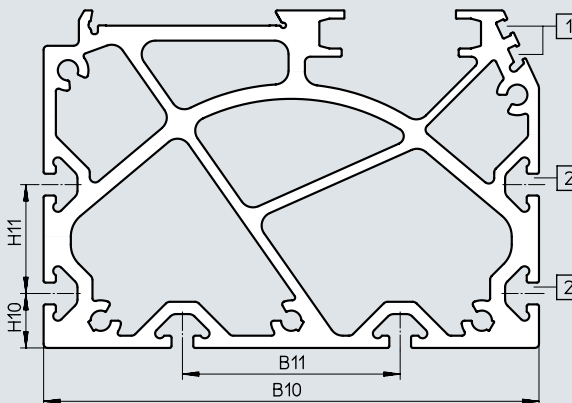
Size 80



Size 120




Size 185



- [1] Sensor slot for proximity sensor
- [2] Mounting slot for slot nut

| Size | B10 | B11 | H10 | H11 |
|------|-----|-----|-----|-----|
| 70 | 67 | 40 | 20 | - |
| 80 | 80 | 40 | 20 | - |
| 120 | 116 | 40 | 20 | - |
| 185 | 182 | 80 | 20 | 40 |

 **Note**
 Requirements for the flatness of the bearing surface and of attachments as well as for use in parallel structures
 → www.festo.com/sp User documentation

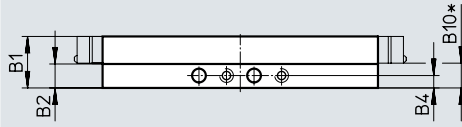
Data sheet

Dimensions

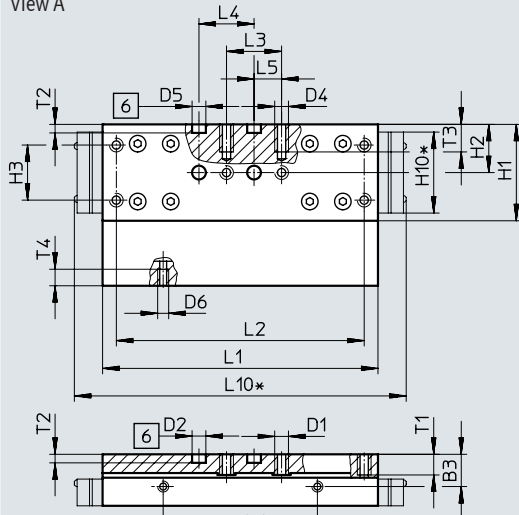
Download CAD data → www.festo.com

GK – Standard slide / GP – Standard slide, protected

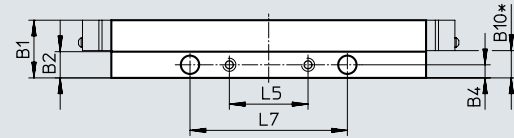
Size 70



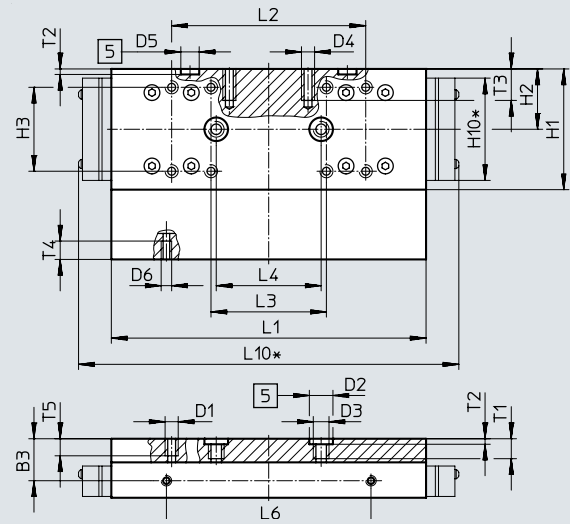
View A



Size 80



View A



[5] Drilled hole for centring sleeve

[6] Drilled hole for centring pin

* Protected version

| Size | B1 | B2 | B3 | B4 | B10* | D1 | D2 ∅ H7 | D3 | D4 | D5 ∅ H7 | D6 | H1 | H2 | H3 |
|------|------|-----|------|-----|------|----|---------------|----|----|---------------|----|----|------|---------|
| 70 | 18.7 | 8.7 | 11.7 | 4.5 | 9 | M5 | 5 | – | M5 | 5 | M4 | 35 | 17.5 | 20 ±0.1 |
| 80 | 22 | 10 | 16 | 5 | 10.4 | M5 | 9 | M6 | M5 | 7 | M4 | 46 | 23 | 32 ±0.2 |

| Size | H10* | L1 | L2 | L3 | L4 | L5 | L6 | L7 | L10* | T1 | T2 | T3 | T4 | T5 |
|------|------|------|---------|---------|-------|---------|------|-------|------|-----|------|----|----|-----|
| | | ±0.1 | | | ±0.03 | | ±0.1 | ±0.05 | | | +0.1 | | | |
| 70 | 29.4 | 100 | 90 ±0.1 | 20 ±0.1 | 20 | 10 ±0.1 | 56 | – | 121 | 7.5 | 3.1 | 10 | 6 | – |
| 80 | 39 | 120 | 74 ±0.2 | 44 ±0.2 | 40 | 30 ±0.1 | 78 | 60 | 145 | 8.6 | 2.1 | 12 | 7 | 7.5 |

* Protected version

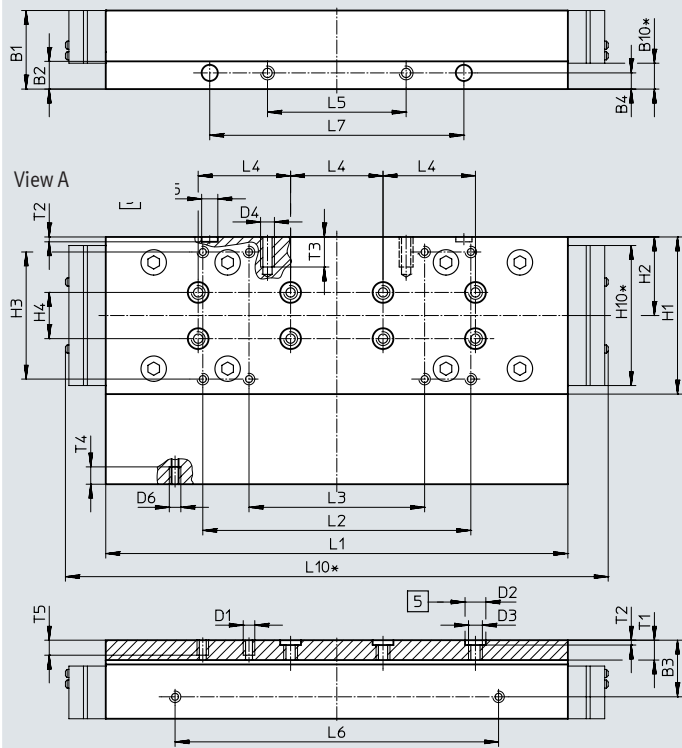
Data sheet

Dimensions

Download CAD data → www.festo.com

GK – Standard slide / GP – Standard slide, protected

Size 120



[5] Drilled hole for centring sleeve

[6] Drilled hole for centring pin

* Protected version

| Size | B1 | B2 | B3 | B4 | B10* | D1 | D2 ∅ H7 | D3 | D4 | D5 ∅ H7 | D6 | H1 | H2 | H3 | H4 ±0.03 |
|------|----|----|------|----|------|----|---------------|----|----|---------------|----|----|----|---------|-------------|
| 120 | 34 | 12 | 24.5 | 7 | 11.2 | M5 | 9 | M6 | M6 | 7 | M5 | 68 | 34 | 55 ±0.2 | 20 |

| Size | H10* | L1 ±0.1 | L2 | L3 | L4 ±0.03 | L5 | L6 ±0.1 | L7 ±0.05 | L10* | T1 | T2 +0.1 | T3 | T4 | T5 |
|------|------|------------|----------|---------|-------------|---------|------------|-------------|------|-----|------------|----|-----|-----|
| 120 | 60.6 | 203.3 | 116 ±0.2 | 76 ±0.2 | 40 | 60 ±0.1 | 140 | 110 | 235 | 8.6 | 2.1 | 13 | 7.5 | 7.5 |

* Protected version

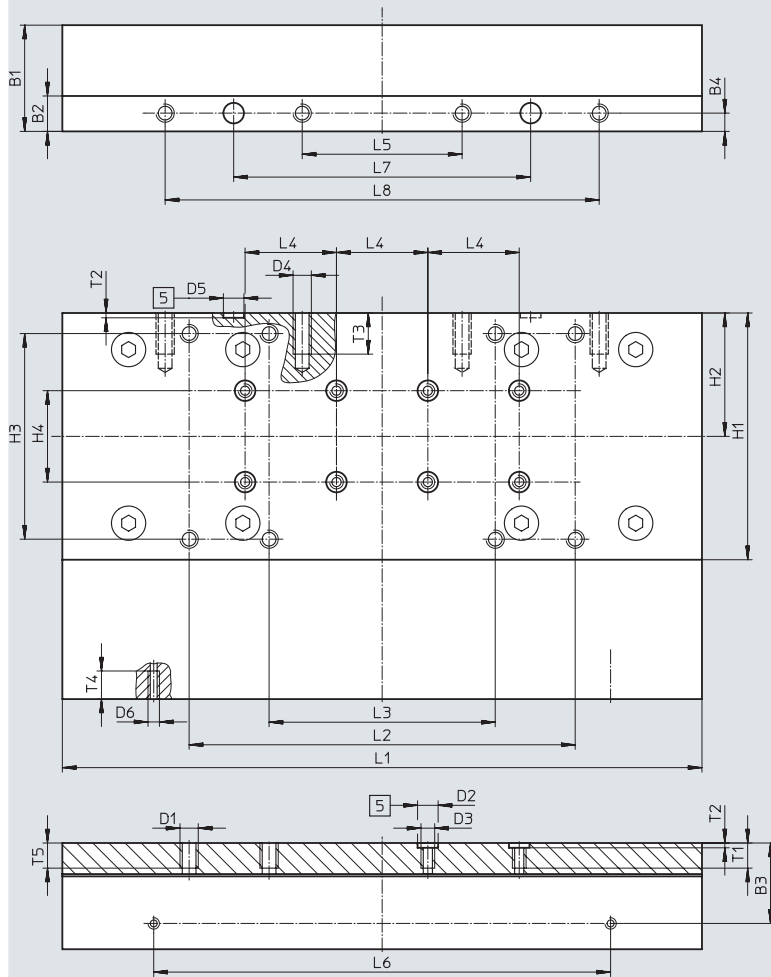
Data sheet

Dimensions

Download CAD data → www.festo.com

GK – Standard slide

Size 185



[5] Drilled hole for centring sleeve

| Size | B1 | B2 | B3 | B4 | D1 | D2 ∅ H7 | D3 | D4 | D5 ∅ H7 | D6 | H1 | H2 | H3 | H4 |
|------|------|------|------|----|----|---------------|----|----|---------------|----|-----|----|---------|----------|
| 185 | 46.5 | 15.5 | 35.2 | 8 | M8 | 9 | M6 | M8 | 9 | M5 | 108 | 54 | 90 ±0.2 | 40 ±0.03 |

| Size | L1 | L2 | L3 | L4 | L5 | L6 | L7 | L8 | T1 | T2 | T3 | T4 | T5 |
|------|-------|----------|---------|-------|---------|------|-------|------|----|------|----|------|----|
| | ±0.1 | | | ±0.03 | | ±0.1 | ±0.05 | ±0.2 | | +0.1 | | | |
| 185 | 282.8 | 169 ±0.2 | 99 ±0.2 | 40 | 70 ±0.2 | 200 | 130 | 190 | 11 | 2.1 | 18 | 12.3 | 12 |

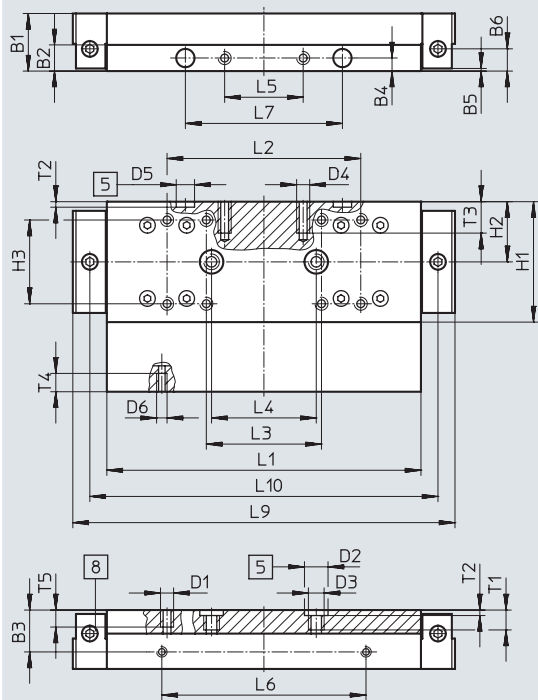
Data sheet

Dimensions

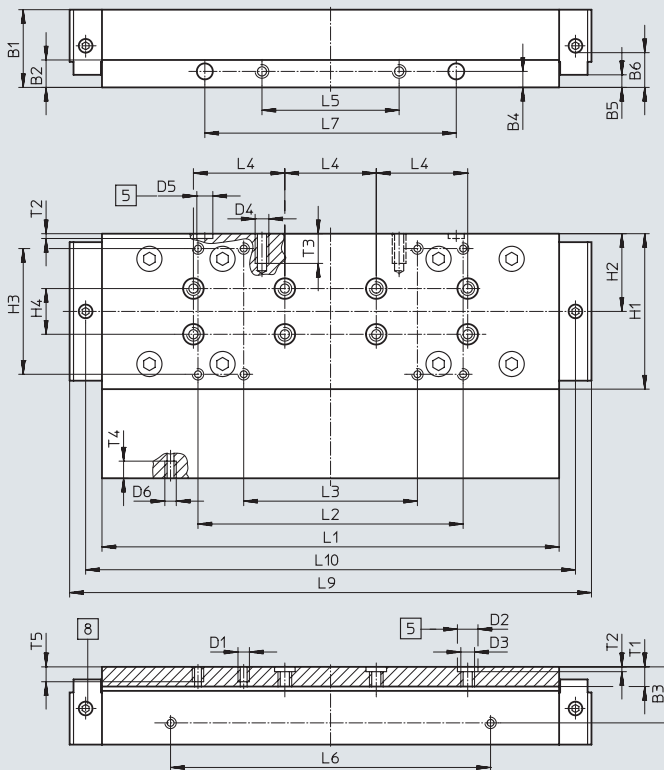
Download CAD data → www.festo.com

GK-C – Standard slide with lubrication adapter

Size 80



Size 120



- [5] Drilled hole for centring sleeve
- [8] Lubricating hole for lubrication adapter M6 threaded connection, 6 mm deep

| Size | B1 | B2 | B3 | B4 | B5 | B6 | D1 | D2 ∅ H7 | D3 | D4 |
|------|----|----|------|----|------|------|----|---------------|----|----|
| | | | | | ±0.1 | | | | | |
| 80 | 22 | 10 | 16 | 5 | 1 | 8.5 | M5 | 9 | M6 | M5 |
| 120 | 34 | 12 | 24.5 | 7 | 5.5 | 18.2 | M5 | 9 | M6 | M6 |

| Size | D5 ∅ H7 | D6 | H1 | H2 | H3 | H4 | L1 | L2 | L3 | L4 |
|------|---------------|----|----|----|------|-------|-------|------|------|-------|
| | | | | | ±0.2 | ±0.03 | ±0.1 | ±0.2 | ±0.2 | ±0.03 |
| 80 | 7 | M4 | 46 | 23 | 32 | – | 120 | 74 | 44 | 40 |
| 120 | 7 | M5 | 68 | 34 | 55 | 20 | 203.3 | 116 | 76 | 40 |

| Size | L5 | L6 | L7 | Size | L9 | L10 | T1 | T2 | T3 | T4 | T5 |
|------|------|------|-------|-------|-------|-----|-----|------|-----|-----|----|
| | ±0.1 | ±0.1 | ±0.05 | | | | | +0.1 | | | |
| 80 | 30 | 78 | 60 | 146 | 133 | 8.6 | 2.1 | 12 | 7 | 7.5 | |
| 120 | 60 | 140 | 110 | 228.3 | 214.3 | 8.6 | 2.1 | 13 | 7.5 | 7.5 | |

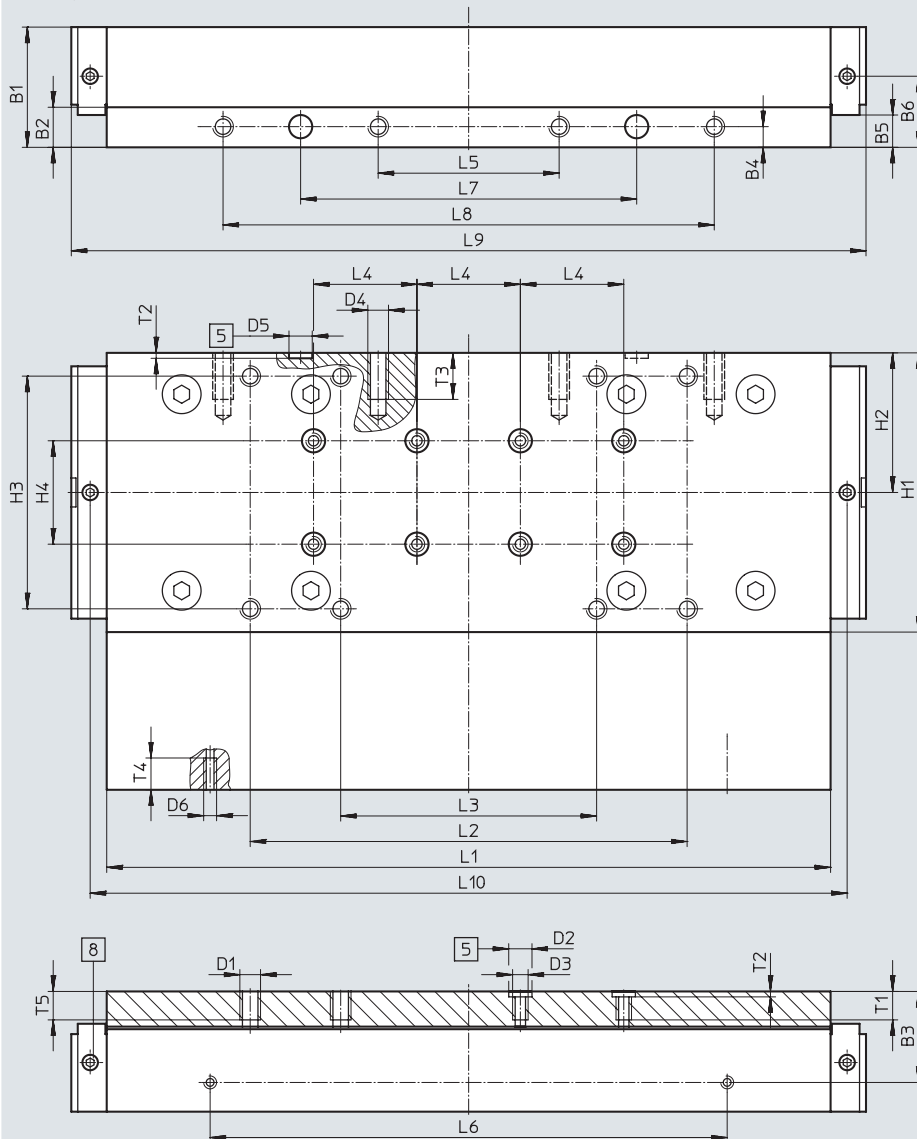
Data sheet

Dimensions

Download CAD data → www.festo.com

GK-C – Standard slide with lubrication adapter

Size 185



[5] Drilled hole for centring sleeve

[8] Lubricating hole for lubrication adapter M6 threaded connection, 6 mm deep

| Size | B1 | B2 | B3 | B4 | B5 | B6 | D1 | D2 ∅ H7 | D3 | D4 |
|------|------|------|------|----|--------------|------|----|---------------|----|----|
| 185 | 46.5 | 15.5 | 35.2 | 8 | ±0.1 12.5 | 27.5 | M8 | 9 | M6 | M8 |

| Size | D5 ∅ H7 | D6 | H1 | H2 | H3 | H4 | L1 | L2 | L3 | L4 |
|------|---------------|----|-----|----|------------|-------------|---------------|-------------|------------|-------------|
| 185 | 9 | M5 | 108 | 54 | ±0.2 90 | ±0.03 40 | ±0.1 282.8 | ±0.2 169 | ±0.2 99 | ±0.03 40 |

| Size | L5 | L6 | L7 | L8 | L9 | L10 | T1 | T2 | T3 | T4 | T5 |
|------|------------|-------------|--------------|-------------|-------|-------|----|-------------|----|------|----|
| 185 | ±0.2 70 | ±0.1 200 | ±0.05 130 | ±0.2 190 | 307.4 | 292.8 | 11 | +0.1 2.1 | 18 | 12.3 | 12 |

Data sheet

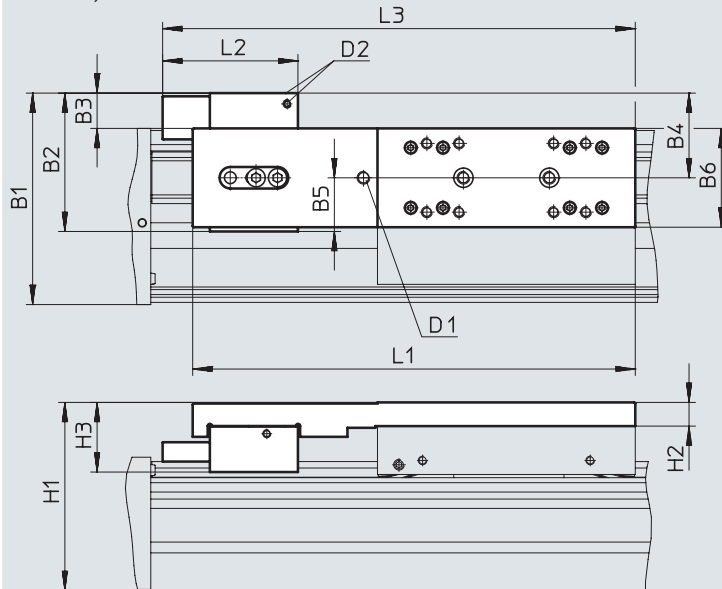
Dimensions

Download CAD data → www.festo.com

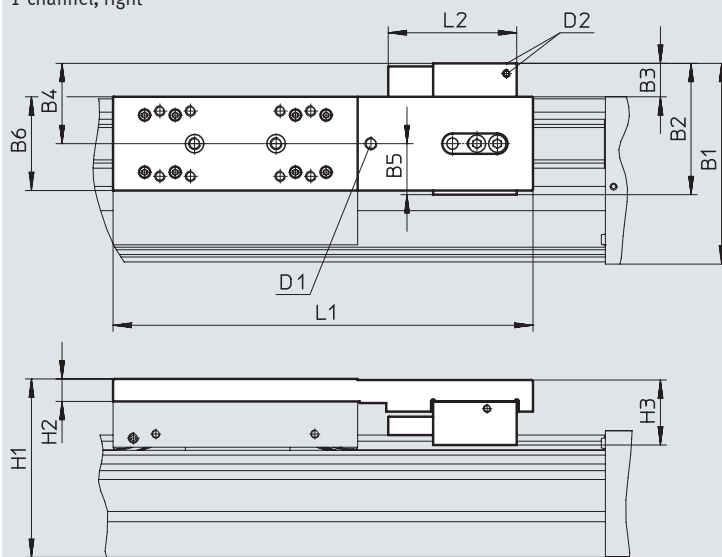
1HL/1HR/2H – With clamping unit

Size 80

1-channel, left



1-channel, right



D2 Compressed air supply port

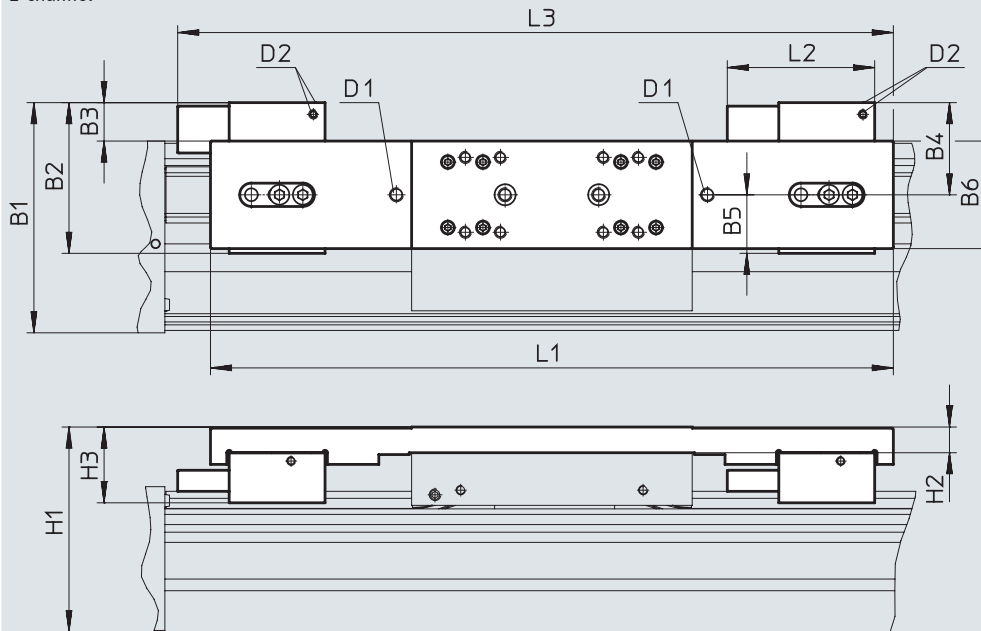
Data sheet

Dimensions

Download CAD data → www.festo.com

1HL/1HR/2H – With clamping unit

Size 80
2-channel



D2 Compressed air supply port

| Type | B1 | B2 | B3 | B4 | B5 | B6 | H1 | H2 | H3 | D1 | D2 | L1 | L2 | L3 |
|---------------------|------|------|------|------|----|----|------|----|------|----|----|-----|-----|-----|
| EGC-80-...-1HL-PN | 98.4 | 64.4 | 17.4 | 39.4 | 25 | 46 | 87.5 | 11 | 32.4 | M6 | M5 | 206 | 63 | 220 |
| EGC-80-...-1HR-PN | | | | | | | | | | | | | | - |
| EGC-80-...-C-1HL-PN | | | | | | | | | | | | | | 220 |
| EGC-80-...-C-1HR-PN | | | | | | | | | | | | | | - |
| EGC-80-...-2H-PN | | | | | | | | | | | | 292 | 306 | |
| EGC-80-...-C-2H-PN | | | | | | | | | | | | | | |

Data sheet

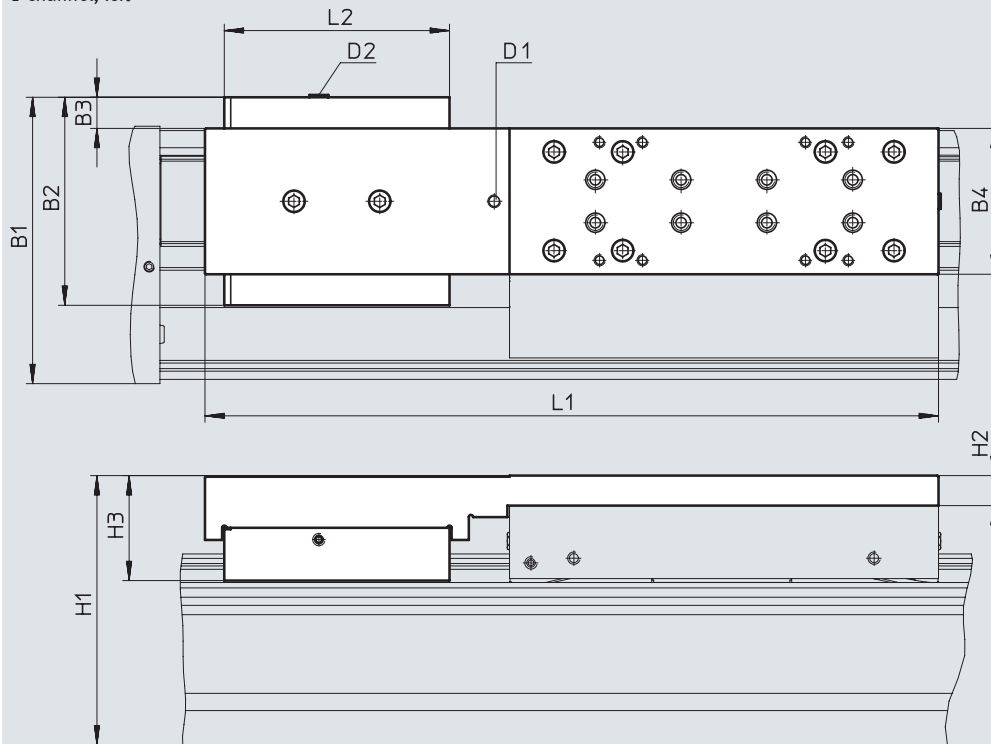
Dimensions

Download CAD data → www.festo.com

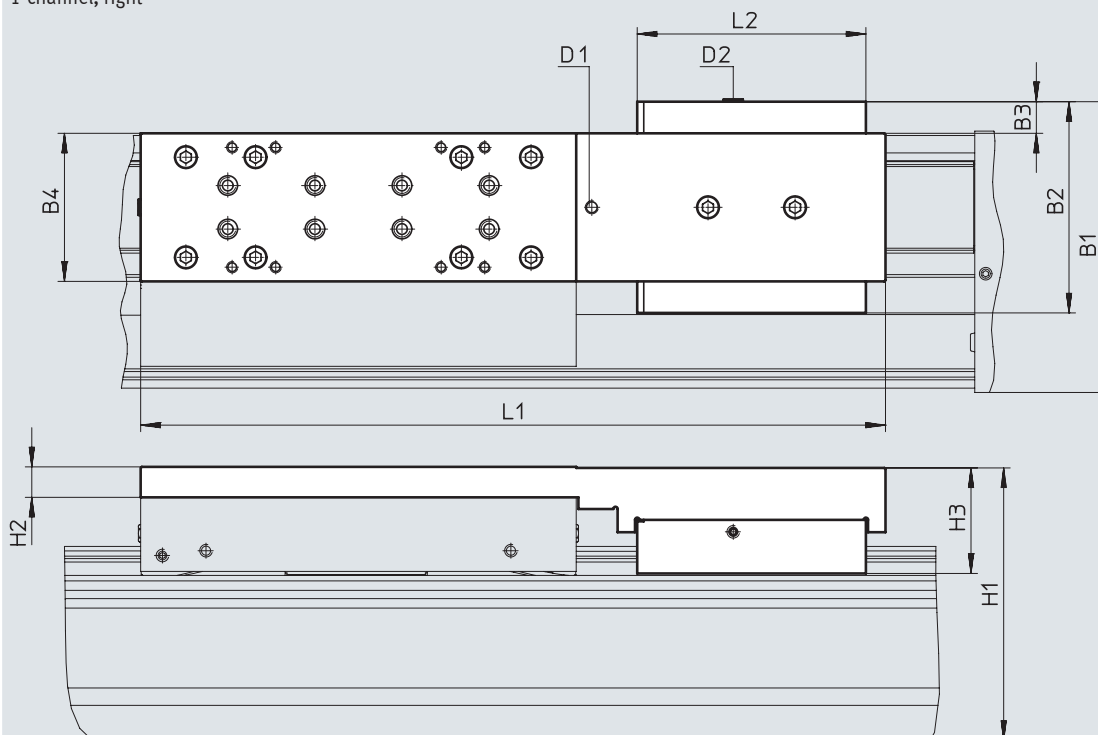
1HL/1HR/2H – With clamping unit

Size 120/185

1-channel, left



1-channel, right



D2 Compressed air supply port

Data sheet

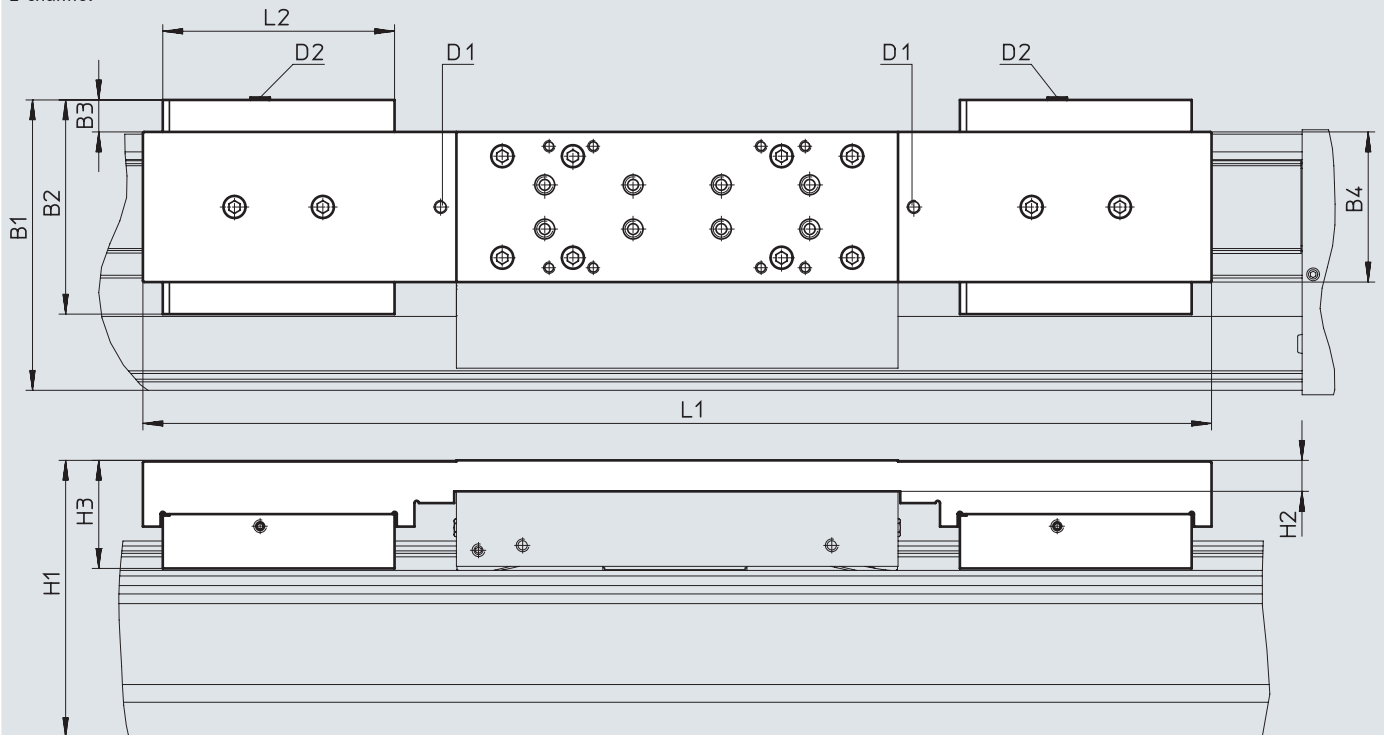
Dimensions

Download CAD data → www.festo.com

1HL/1HR/2H – With clamping unit

Size 120/185

2-channel



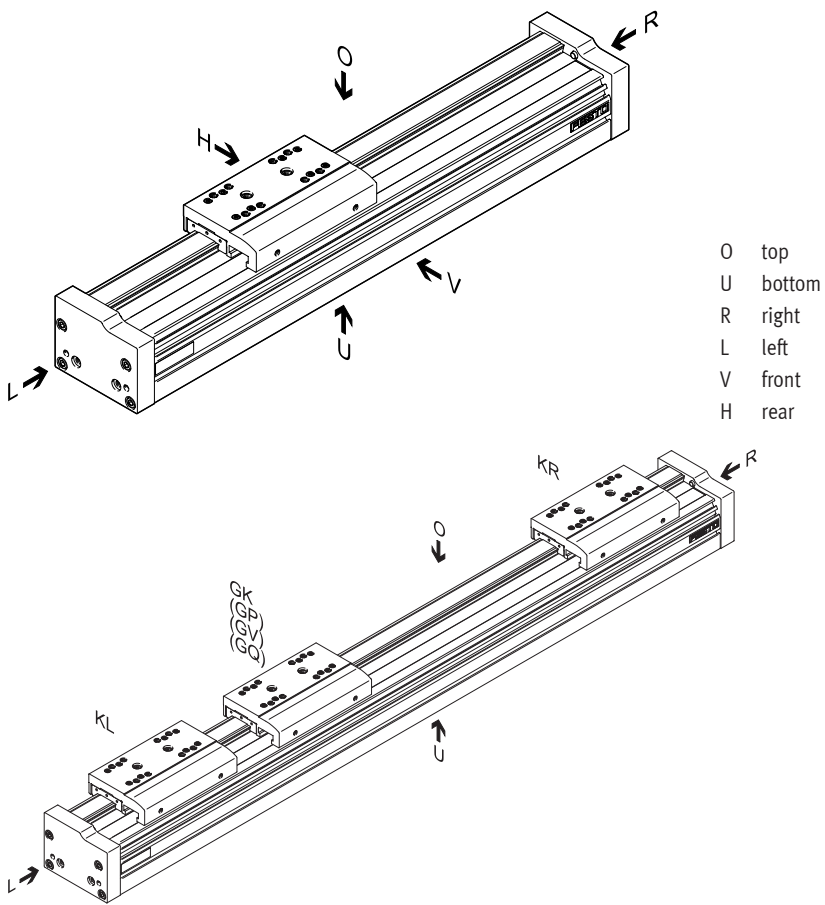
D2 Compressed air supply port

| Type | B1 | B2 | B3 | B4 | H1 | H2 | H3 | D1 | D2 | L1 | L2 |
|----------------------|-------|-----|------|-----|-------|----|------|----|----|-----|-----|
| Size 120 | | | | | | | | | | | |
| EGC-120-...-1HL-PN | 133.5 | 97 | 15.5 | 68 | 125.5 | 14 | 48.9 | M6 | M5 | 342 | 105 |
| EGC-120-...-1HR-PN | | | | | | | | | | | |
| EGC-120-...-C-1HL-PN | | | | | | | | | | | |
| EGC-120-...-C-1HR-PN | | | | | | | | | | | |
| EGC-120-...-2H-PN | | | | | | | | | | | |
| EGC-120-...-C-2H-PN | | | | | | | | | | 484 | |
| Size 185 | | | | | | | | | | | |
| EGC-185-...-1HL-PN | 196.5 | 131 | 12.5 | 108 | 189.5 | 17 | 64.1 | M6 | M5 | 432 | 109 |
| EGC-185-...-1HR-PN | | | | | | | | | | | |
| EGC-185-...-C-1HL-PN | | | | | | | | | | | |
| EGC-185-...-C-1HR-PN | | | | | | | | | | | |
| EGC-185-...-2H-PN | | | | | | | | | | | |
| EGC-185-...-C-2H-PN | | | | | | | | | | 584 | |

Ordering data – Modular product system

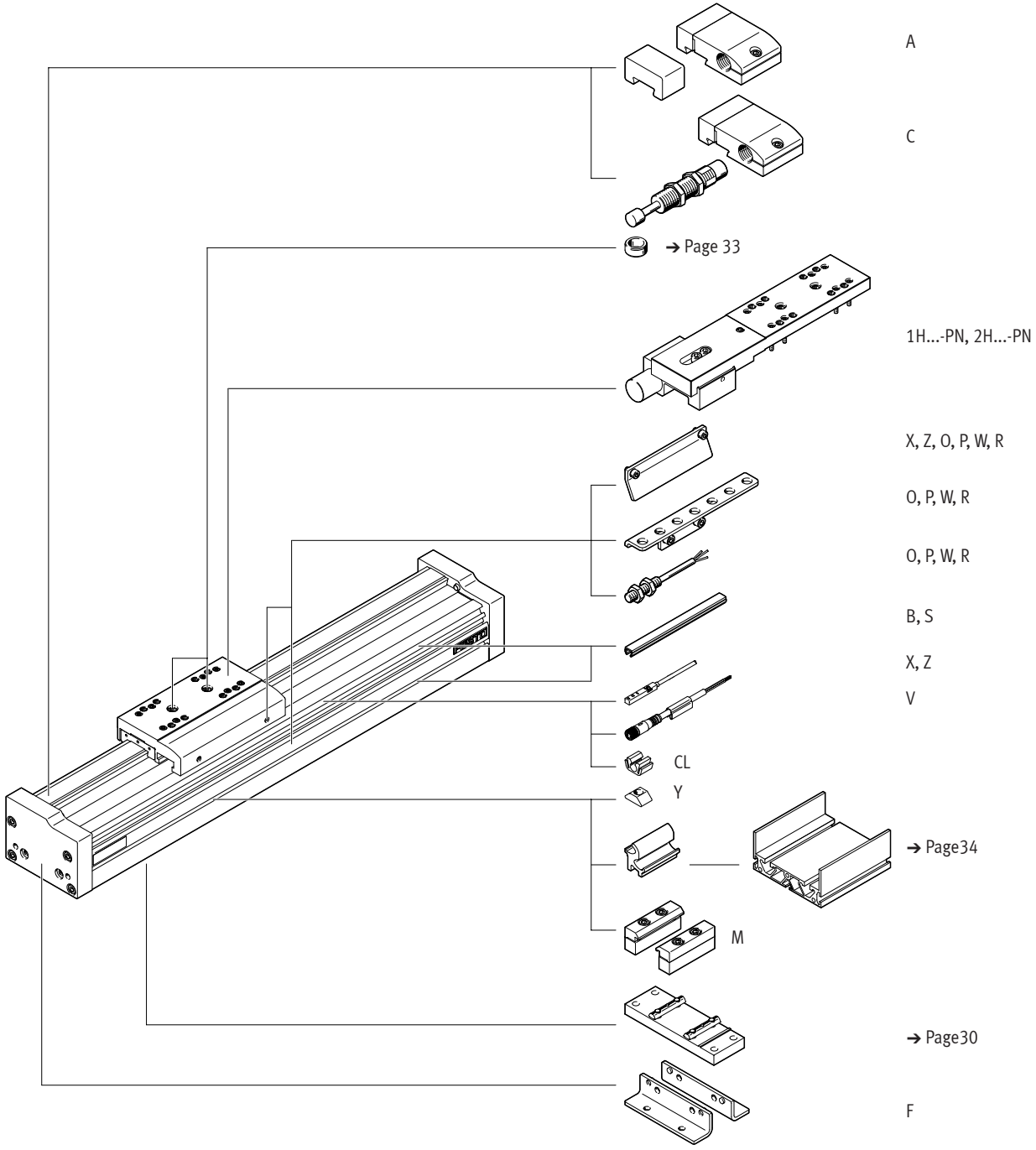
Order code

Mandatory data



Ordering data – Modular product system

Order code
Accessories



Ordering data – Modular product system

| Ordering table | | | | | | | |
|----------------------|-----------------------------------|---------------------|---------------|---------------|------------|--------------|------------|
| Size | 70 | 80 | 120 | 185 | Conditions | Code | Enter code |
| Module no. | 558864 | 558865 | 558866 | 558868 | | | |
| Design | Guide axis | | | | | EGC | EGC |
| Size | 70 | 80 | 120 | 185 | | -... | -... |
| Stroke [mm] | 50 ... 5000 | 50 ... 8500 | 50 ... 8500 | 50 ... 8500 | [1] | -... | -... |
| Guide | Guide axis | | | | | -FA | -FA |
| Stroke reserve [mm] | 0 ... 999 (0 = no stroke reserve) | | | | [1] | -...H | |
| Slide | Standard slide | | | | | -GK | |
| | Standard slide, protected | | | | - | -GP | |
| Additional slide | 1 ... 2 | | | | [2] | -...K | |
| Lubrication function | Standard | | | | | | |
| | - | Lubrication adapter | | | | -C | |
| Clamping unit | - | 1-channel, left | | | [3] | -1HL | |
| | - | 1-channel, right | | | [3] | -1HR | |
| | - | 2-channel | | | [3] | -2H | |
| Actuation type | - | Pneumatic | | | | -PN | |

[1] -... The sum of the stroke length and 2x stroke reserve must not exceed the maximum stroke length

[2] ... K If the protected slide variant (GP) is selected, then the additional slide is also protected
 If the slide with lubrication adapter (GK-C) is selected, the additional slide (KL, KR) is also supplied with lubrication adapter
 Working stroke reduction in combination with additional slide (K) → page 10

[3] 1HL, 1HR, 2H Not with additional slide K
 Only with PN
 Working stroke reduction in combination with clamping unit (1HL, 1HR, 2H) → page 10

Ordering data – Modular product system

| Ordering table | | 70 | 80 | 120 | 185 | Conditions | Code | Enter code |
|---|--------------------------|--|----|-----|-----|------------|-------|------------|
| Size | | | | | | | | |
| Accessories | | Accessories enclosed separately | | | | | ZUB- | ZUB- |
| Foot mounting | | 1 | | | | | F | |
| Profile mounting | | 1 ... 50 | | | | | ...M | |
| Covering | Mounting slot | 1 ... 50 (1 = 2 pieces, 500 mm length) | | | | | ...B | |
| | Sensor slot | 1 ... 50 (1 = 2 pieces, 500 mm length) | | | | | ...S | |
| Slot nut for mounting slot | | 1 ... 99 | | | | | ...Y | |
| Proximity sensor (SIES), inductive, slot type 8, PNP, incl. switch lug | N/O contact, 7.5 m cable | 1 ... 6 | | | | | ...X | |
| | N/C contact, 7.5 m cable | 1 ... 6 | | | | | ...Z | |
| Emergency buffer with retaining bracket | | 1 ... 2 | | | | [4] | ...A | |
| Shock absorber with retaining bracket | | 1 ... 2 | | | | [5] | ...C | |
| Proximity sensor (SIEN), inductive, M8, PNP, incl. switch lug with sensor bracket | N/O contact, 2.5 m cable | 1 ... 99 | | | | | ...O | |
| | N/C contact, 2.5 m cable | 1 ... 99 | | | | | ...P | |
| | N/O contact, M8 plug | 1 ... 99 | | | | | ...W | |
| | N/C contact, M8 plug | 1 ... 99 | | | | | ...R | |
| Plug socket with cable 2.5 m, M8, 3-wire | | 1 ... 99 | | | | | ...V | |
| Cable clip | | 10, 20, 30, 40, 50, 60, 70, 80, 90 | | | | | ...CL | |
| Operating instructions | | Express waiver – no operating instructions to be included as they are already available (operating instructions in PDF format are available free of charge on the Internet at www.festo.com) | | | | | -DN | |

[4] ... A Emergency buffer with retaining bracket A cannot be combined with slide GP, GK-C, shock absorber with retaining bracket C and clamping unit 1H...-PN, 2H-PN

[5] ... C Shock absorber with retaining bracket C cannot be combined with slide GP, GK-C, emergency buffer with retaining bracket A and clamping unit 1H...-PN, 2H-PN

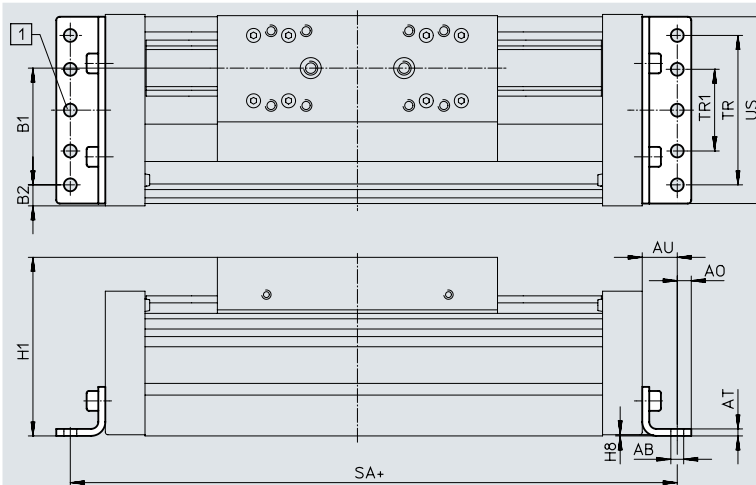
**Note**

The code X, Z includes a switch lug in the scope of delivery. The code O, P, W, R includes one switch lug and max. two sensor brackets in the scope of delivery.

Accessories

Foot mounting HPE
(order code F)

Material:
Galvanised steel
RoHS-compliant



[1] Drilled hole for HPE-120
+ = plus stroke length + 2x stroke reserve

Dimensions and ordering data

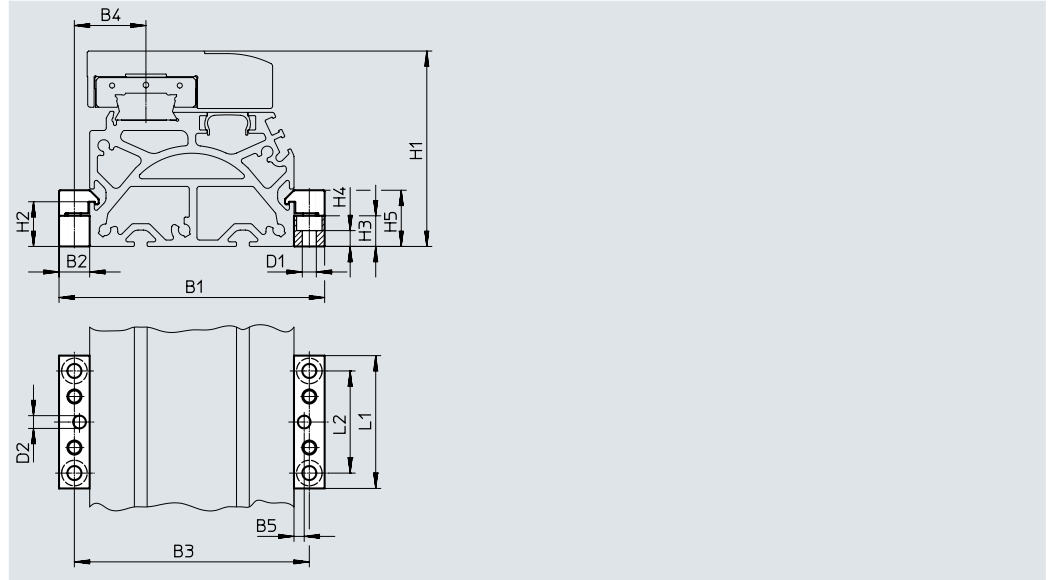
| For size | AB ∅ | A0 | AT | AU | B1 | B2 | H1 | H8 |
|----------|---------|----|----|----|-----|------|-------|-----|
| 70 | 5.5 | 6 | 3 | 13 | 37 | 14.5 | 64 | 0.5 |
| 80 | 5.5 | 6 | 3 | 15 | 38 | 21 | 76.5 | 0.5 |
| 120 | 9 | 8 | 6 | 22 | 65 | 20 | 111.5 | 0.6 |
| 185 | 9 | 12 | 8 | 25 | 118 | 13 | 172.5 | 0.5 |

| For size | SA | TR | TR1 | US | Weight [g] | Part no. | Type |
|----------|-----|-----|-----|-----|---------------|----------|---------|
| 70 | 189 | 40 | – | 67 | 115 | 558321 | HPE-70 |
| 80 | 220 | 40 | – | 80 | 150 | 558322 | HPE-80 |
| 120 | 350 | 80 | – | 116 | 578 | 558323 | HPE-120 |
| 185 | 456 | 160 | 80 | 182 | 1438 | 558325 | HPE-185 |

Accessories

Profile mounting MUE (order code M)

Material:
Anodised aluminium
RoHS-compliant



Dimensions and ordering data

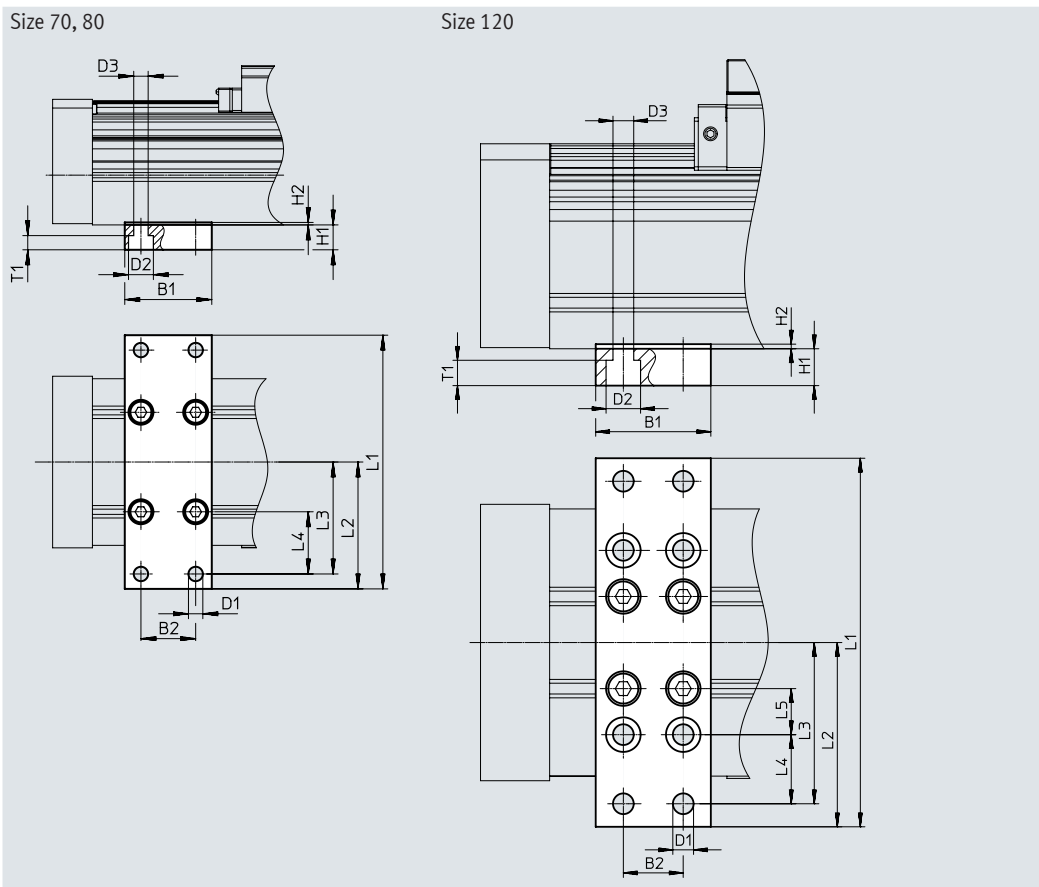
| For size | B1 | B2 | B3 | B4 | B5 | D1 ∅ | D2 ∅ H7 | H1 | H2 |
|----------|-----|----|-----|------|----|---------|---------------|-------|------|
| 70 | 91 | 12 | 79 | 22.5 | 4 | 5.5 | 5 | 64 | 17.5 |
| 80 | 104 | 12 | 92 | 28 | 4 | 5.5 | 5 | 76.5 | 17.5 |
| 120 | 154 | 19 | 135 | 42.5 | 4 | 9 | 5 | 111.5 | 16 |
| 185 | 220 | 19 | 201 | 62.5 | 4 | 9 | 5 | 172.5 | 16 |

| For size | H3 | H4 | H5 | L1 | L2 | Weight [g] | Part no. | Type |
|----------|----|-----|------|----|----|---------------|----------|-------------|
| 70 | 12 | 6.2 | 22 | 52 | 40 | 80 | 558043 | MUE-70/80 |
| 80 | 12 | 6.2 | 22 | 52 | 40 | 80 | 558043 | MUE-70/80 |
| 120 | 14 | 5.5 | 29.5 | 90 | 40 | 290 | 558044 | MUE-120/185 |
| 185 | 14 | 5.5 | 29.5 | 90 | 40 | 290 | 558044 | MUE-120/185 |

Accessories

Central support EAHF

Material:
Anodised aluminium
RoHS-compliant



Dimensions and ordering data

| For size | B1 | B2 | D1 ∅ | D2 ∅ | D3 ∅ | H1 | L1 |
|----------|----|----|---------|---------|---------|----|-----|
| 70 | 35 | 22 | 5.8 | 10 | 5.8 | 10 | 102 |
| 80 | | | | | | | 112 |
| 120 | 50 | 26 | 9 | 15 | 9 | 16 | 160 |

| For size | L2 | L3 | L4 | L5 | T1 | Weight [g] | Part no. | Type |
|----------|----|----|----|----|-----|---------------|----------|---------------|
| 70 | 51 | 45 | 25 | - | 5.7 | 113 | 2349256 | EAHF-L5-70-P |
| 80 | 56 | 50 | 30 | | | 123 | 3535188 | EAHF-L5-80-P |
| 120 | 80 | 70 | 30 | 20 | 11 | 384 | 2410274 | EAHF-L5-120-P |

Accessories

Shock absorber retainer KYE

Emergency buffer NPE → page 33

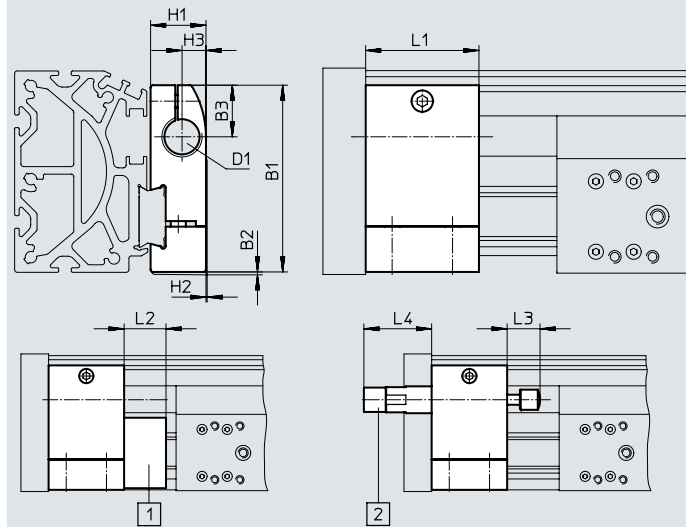
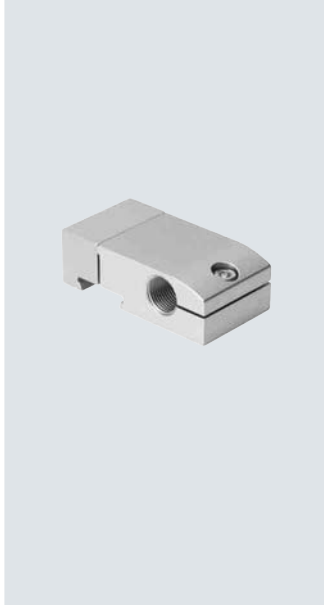
Shock absorber YSRW → page 33
(order code A or C)

Material:

Anodised aluminium

RoHS-compliant

Cannot be used in combination with the variant GP or GK-C and 1H...-PN, 2H-PN.



[1] Emergency buffer NPE

[2] Shock absorber YSRW

Dimensions and ordering data

| For size | B1 | B2 | B3 | D1 | H1 | H2 | H3 | L1 | L2 | L3 | L4 | Weight [g] | Part no. | Type |
|----------|-------|----|------|---------|------|-----|-----|----|----|----|------|------------|----------|---------|
| 70 | 57.5 | 1 | 16.5 | M12X1 | 18.2 | 0.5 | 7.5 | 30 | 15 | 14 | 32 | 75 | 557584 | KYE-70 |
| 80 | 74.2 | 1 | 20.5 | M16X1 | 22 | 0.5 | 9.5 | 45 | 25 | 20 | 41 | 170 | 557585 | KYE-80 |
| 120 | 108.5 | 1 | 26 | M22X1.5 | 31 | 1 | 14 | 60 | 40 | 26 | 48.5 | 680 | 557586 | KYE-120 |
| 185 | 168 | 1 | 37 | M26X1.5 | 42 | 4 | 18 | 75 | 60 | 34 | 58.5 | 1075 | 557587 | KYE-185 |

Switch lug SF-EGC-1

for sensing via proximity sensor

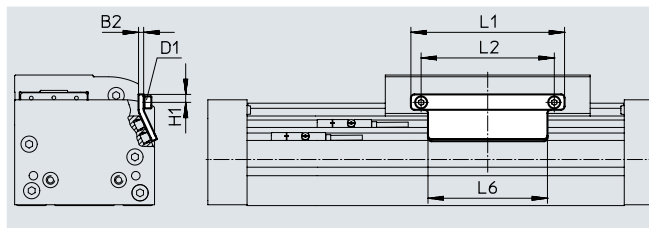
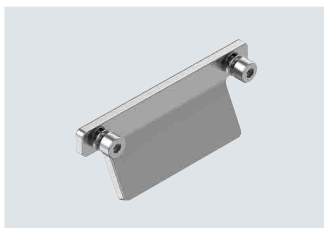
SIES-8M

(order code X or Z)

Material:

Galvanised steel

RoHS-compliant



Dimensions and ordering data

| For size | B2 | D1 | H1 | L1 | L2 | L6 | Weight [g] | Part no. | Type |
|----------|----|----|------|-----|-----|-----|------------|----------|--------------|
| 70 | 3 | M4 | 4.65 | 70 | 56 | 50 | 50 | 558047 | SF-EGC-1-70 |
| 80 | 3 | M4 | 4.65 | 90 | 78 | 70 | 63 | 558048 | SF-EGC-1-80 |
| 120 | 3 | M5 | 8 | 170 | 140 | 170 | 147 | 558049 | SF-EGC-1-120 |
| 185 | 3 | M5 | 10 | 230 | 200 | 230 | 246 | 558051 | SF-EGC-1-185 |

Accessories

Switch lug SF-EGC-2

for sensing via proximity sensor
SIEN-M8B (order code O, P, W or R) or
SIES-8M (order code X or Z)

Material:

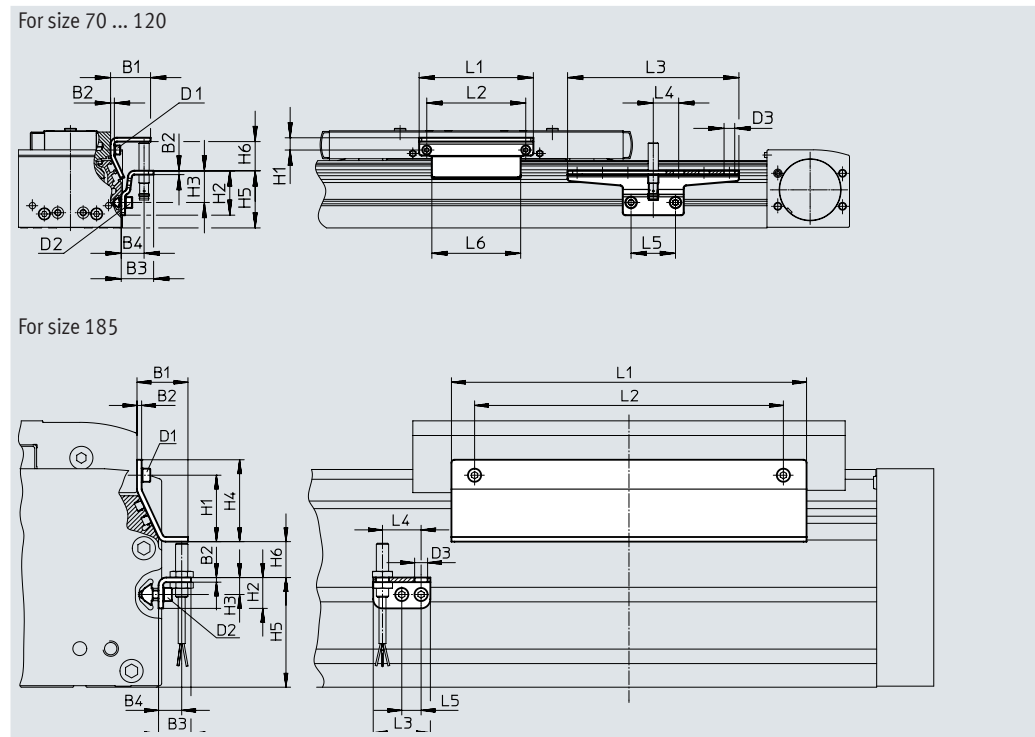
Galvanised steel
RoHS-compliant

Sensor bracket HWS-EGC

for proximity sensor SIEN-M8B (order
code O, P, W or R)

Material:

Galvanised steel
RoHS-compliant



Dimensions and ordering data

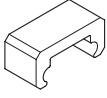
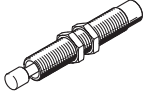


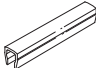
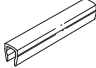
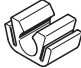
| For size | B1 | B2 | B3 | B4 | D1 | D2 | D3 ∅ | H1 | H2 |
|----------|------|----|------|----|----|----|---------|------|----|
| 70 | 31.5 | 3 | 25.5 | 18 | M4 | M5 | 8.4 | 9.5 | 35 |
| 80 | 31.5 | 3 | 25.5 | 18 | M4 | M5 | 8.4 | 9.5 | 35 |
| 120 | 32 | 3 | 25.5 | 18 | M5 | M5 | 8.4 | 13.2 | 65 |
| 185 | 33 | 3 | 25.5 | 15 | M5 | M5 | 8.4 | 43 | 20 |

| For size | H3 | H4 | H5 | H6 max. | L1 | L2 | L3 | L4 | L5 | L6 |
|----------|----|----|----|------------|-----|-----|-----|----|------|-----|
| 70 | 25 | – | 45 | 13.5 | 70 | 56 | 135 | 20 | 35 | 50 |
| 80 | 25 | – | 45 | 23.5 | 90 | 78 | 135 | 20 | 35 | 70 |
| 120 | 55 | – | 75 | 24 | 170 | 140 | 215 | 20 | 35 | 170 |
| 185 | 11 | 53 | 71 | 25.5 | 230 | 200 | 37 | 25 | 12.5 | 230 |

| For size | Weight [g] | Part no. | Type |
|-------------------|---------------|----------|--------------|
| Switch lug | | | |
| 70 | 100 | 558052 | SF-EGC-2-70 |
| 80 | 130 | 558053 | SF-EGC-2-80 |
| 120 | 277 | 558054 | SF-EGC-2-120 |
| 185 | 390 | 558056 | SF-EGC-2-185 |

| For size | Weight [g] | Part no. | Type |
|-----------------------|---------------|----------|-------------------------|
| Sensor bracket | | | |
| 70 | 110 | 558057 | HWS-EGC-M5 |
| 80 | 110 | 558057 | HWS-EGC-M5 |
| 120 | 217 | 570365 | HWS-EGC-M8-B |
| 185 | 58 | 560517 | HWS-EGC-M8-KURZ (SHORT) |

Accessories

| Ordering data | | For size | Description | Order code | Part no. | Type | PJ ¹⁾ |
|--|--------------|---|-------------|------------|-------------|------|------------------|
| Emergency buffer NPE | | | | | | | |
|  | 70 | For use in combination with shock absorber retainer KYE | A | 562581 | NPE-70 | 1 | |
| | 80 | | | 562582 | NPE-80 | | |
| | 120 | | | 562583 | NPE-120 | | |
| | 185 | | | 562584 | NPE-185 | | |
| Shock absorber YSRW Data sheets → Internet: ysrw | | | | | | | |
|  | 70 | For use in combination with shock absorber retainer KYE | C | 191194 | YSRW-8-14 | 1 | |
| | 80 | | | 191196 | YSRW-12-20 | | |
| | 120 | | | 191197 | YSRW-16-26 | | |
| | 185 | | | 191198 | YSRW-20-34 | | |
| Slot nut NST | | | | | | | |
|  | 70, 80 | For mounting slot | Y | 150914 | NST-5-M5 | 1 | |
| | | | | 8047843 | NST-5-M5-10 | 10 | |
| | | | | 8047878 | NST-5-M5-50 | 50 | |
| | 120, 185 | For mounting slot | Y | 150915 | NST-8-M6 | 1 | |
| | | | | 8047868 | NST-8-M6-10 | 10 | |
| | | | | 8047869 | NST-8-M6-50 | 50 | |
| Centring pin/sleeve ZBS/ZBH | | | | | | | |
|  | 70 | For slide | - | 150928 | ZBS-5 | 10 | |
| | 80, 120, 185 | | | 150927 | ZBH-9 | | |
| Slot cover ABP | | | | | | | |
|  | 70, 80 | For mounting slot Each 0.5 m | B | 151681 | ABP-5 | 2 | |
| | 120, 185 | | | 151682 | ABP-8 | | |
| Slot cover ABP-S | | | | | | | |
|  | 70 ... 185 | For sensor slot Each 0.5 m | S | 563360 | ABP-5-S1 | 2 | |
| Clip SMBK | | | | | | | |
|  | 70 ... 185 | For sensor slot, for mounting the proximity sensor cables | CL | 534254 | SMBK-8 | 10 | |

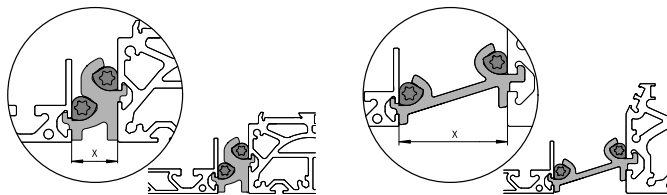
1) Packaging unit

Accessories

Mounting options between axis and support profile

Depending on the adapter kit, the spacing between the axis and the support profile is:
 $x = 20 \text{ mm}$ or 50 mm

The support profile must be mounted using at least 2 adapter kits. For longer strokes, an adapter kit must be used every 500 mm.

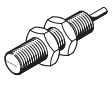
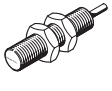

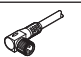


| Ordering data | | | | | |
|-----------------------------|------------|---|----------|------------------|------------------|
| | For size | Description | Part no. | Type | PU ¹⁾ |
| Adapter kit DHAM | | | | | |
| | 80 | <ul style="list-style-type: none"> For mounting the support profile on the axis Spacing between axis and profile is 20 mm | 562241 | DHAM-ME-N1-CL | 1 |
| | 120 | | 562242 | DHAM-ME-N2-CL | |
| | 70, 80 | <ul style="list-style-type: none"> For mounting the support profile on the axis Spacing between axis and profile is 50 mm | 574560 | DHAM-ME-N1-50-CL | |
| | 120 | | 574561 | DHAM-ME-N2-50-CL | |
| Support profile HMIA | | | | | |
| | 70 ... 120 | <ul style="list-style-type: none"> For guiding an energy chain | 539379 | HMIA-E07- | 1 |

1) Packaging unit

| Ordering data – Proximity sensors for T-slot, inductive | | | | | | | Data sheets → Internet: sies |
|---|--|-----------------------|------------------|------------------|------------|----------|------------------------------|
| | Type of mounting | Electrical connection | Switching output | Cable length [m] | Order code | Part no. | Type |
| N/O contact | | | | | | | |
| | Insertable in the slot from above, flush with the cylinder profile | Cable, 3-wire | PNP | 7.5 | X | 551386 | SIES-8M-PS-24V-K-7.5-OE |
| | | Plug M8x1, 3-pin | | 0.3 | – | 551387 | SIES-8M-PS-24V-K-0.3-M8D |
| | | Cable, 3-wire | NPN | 7.5 | – | 551396 | SIES-8M-NS-24V-K-7.5-OE |
| | | Plug M8x1, 3-pin | | 0.3 | – | 551397 | SIES-8M-NS-24V-K-0.3-M8D |
| N/C contact | | | | | | | |
| | Insertable in the slot from above, flush with the cylinder profile | Cable, 3-wire | PNP | 7.5 | Z | 551391 | SIES-8M-PO-24V-K-7.5-OE |
| | | Plug M8x1, 3-pin | | 0.3 | – | 551392 | SIES-8M-PO-24V-K-0.3-M8D |
| | | Cable, 3-wire | NPN | 7.5 | – | 551401 | SIES-8M-NO-24V-K-7.5-OE |
| | | Plug M8x1, 3-pin | | 0.3 | – | 551402 | SIES-8M-NO-24V-K-0.3-M8D |

Accessories

| Ordering data – Proximity sensors M8 (round design), inductive | | | | | | | Data sheets → Internet: sien |
|---|------------------------------|------------------------------|------------------|------------------|------------|---------------------|------------------------------|
| | Electrical connection | LED | Switching output | Cable length [m] | Order code | Part no. | Type |
| N/O contact | | | | | | | |
|  | Cable, 3-wire | ■ | PNP | 2.5 | O | 150386 | SIEN-M8B-PS-K-L |
| | Plug M8x1, 3-pin | ■ | PNP | – | W | 150387 | SIEN-M8B-PS-S-L |
| N/C contact | | | | | | | |
|  | Cable, 3-wire | ■ | PNP | 2.5 | P | 150390 | SIEN-M8B-PO-K-L |
| | Plug M8x1, 3-pin | ■ | PNP | – | R | 150391 | SIEN-M8B-PO-S-L |
| Ordering data – Connecting cables | | | | | | | Data sheets → Internet: nebu |
| | Electrical connection, left | Electrical connection, right | | Cable length [m] | Part no. | Type | |
|  | Straight socket, M8x1, 3-pin | Cable, open end, 3-wire | | 2.5 | 159420 | SIM-M8-3GD-2.5-PU | |
| | | | | 2.5 | 541333 | NEBU-M8G3-K-2.5-LE3 | |
| | | | | 5 | 541334 | NEBU-M8G3-K-5-LE3 | |
|  | Angled socket, M8x1, 3-pin | Cable, open end, 3-wire | | 2.5 | 541338 | NEBU-M8W3-K-2.5-LE3 | |
| | | | | 5 | 541341 | NEBU-M8W3-K-5-LE3 | |

Festo - Your Partner in Automation



1 Festo Inc.
5300 Explorer Drive
Mississauga, ON L4W 5G4
Canada

Festo Customer Interaction Center
Tel: 1 877 463 3786
Fax: 1 877 393 3786
Email: customer.service.ca@festo.com

2 Festo Pneumatic
Av. Ceylán 3,
Col. Tequesquináhuac
54020 Tlalnepantla,
Estado de México

Multinational Contact Center
01 800 337 8669
ventas.mexico@festo.com

3 Festo Corporation
1377 Motor Parkway
Suite 310
Islandia, NY 11749

Festo Customer Interaction Center
1 800 993 3786
1 800 963 3786
customer.service.us@festo.com

4 Regional Service Center
7777 Columbia Road
Mason, OH 45040

Connect with us



www.festo.com/socialmedia



www.festo.com

Subject to change