

Solenoid valves VSNC



Festo core product range
Covers 80% of your automation tasks

Worldwide:

Always in stock

Superb:

Festo quality at an attractive price

Easy:

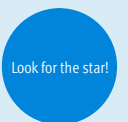
Reduces procurement and storing complexity



Generally ready for shipping ex works in 24 hours
Held in stock in 13 service centres worldwide
More than 2200 product



Generally ready for shipping ex works in 5 days
Assembled for you in 4 service centres worldwide
Up to 6×10^{12} variants per product series



Solenoid valves VSNC

Key features, product range overview VSNC...



Function

VSNC valves are pilot valves for single- and double-acting quarter turn and linear actuators with a port pattern in accordance with VDI/VDE 3845, such as DAPS, DFPB, DLP. They can also be mounted on actuators without a NAMUR interface, e.g. diaphragm actuators

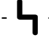
thanks to appropriate accessories such as a connection kit. They are designed for the requirements of process automation. Mechanical springs (single-solenoid valves) ensure safe switching to the initial position in the event of a power failure.


Innovative


- Conversion from 3/2-way to 5/2-way valve simply by turning the seal
- Enables single- or double-acting actuators to be controlled with one valve
- The valve can be ordered either with non-detenting/detenting or non-detenting manual override or without manual override. It is converted using a special cover. The part number is therefore identical. The manual override option can be changed at any time

Cost- and application-optimised

- Cost-optimised variant with plastic cover and brass armature and IP65 coils

-  Voltage
12, 24, 48 V DC
24, 48, 120, 230 V AC

-  Operating pressure
2.5 ... 10 bar

-  Temperature range
-20 ... +60 °C

Flexible

- Application-optimised variant with aluminium cover, stainless steel armature tube for IP65 and Ex coils, and protective cap for armature tube exhaust
- One armature tube system for all Ex solenoid systems
- For zone 1 to IEC Ex with type of ignition protection
- Ex-ia
- Ex-mb
- For zone 2 to IEC Ex with type of ignition protection
- Ex-nA
- For Class I, Div I to NEC 505
- AEx-m



VSNC-F8



VSNC with IP65 solenoid

VSNC-F ... -FN



VSNC piston spool

VSNC with Ex-ia solenoid

VSNC with Ex-nA solenoid

VSNC-FT ... -FN



VSNC poppet seat

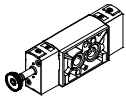
VSNC with FM solenoid

VSNC with Ex-m solenoid

Solenoid valves VSNC

Key features, product range overview VSNC...-F8

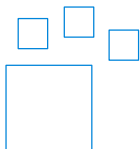
VSNC-F8



- Valve cover cap material: Plastic/metal
- Armature material: Brass
- Pilot air (incoming air of armature), unprotected

| Version | Type | Pneumatic connection 1, 3, 5 | Pneumatic connection 2, 4, based on standard | Standard nominal flow rate [l/min] | → Page |
|---|---------------------------|------------------------------|--|------------------------------------|--------|
| 5/2-way or 3/2-way valve, convertible, single solenoid | | | | | |
| | VSNC-FC-M52-MD-G14-F8 | G 1/4 | VDI/VDE 3845 NAMUR 1/4 | 1250 | 12 |
| | VSNC-FC-M52-MD-N14-F8 | NPT 1/4 | | | |
| | VSNC-FC-M52-MD-G14-F8-1A1 | G 1/4 | | | |
| 5/2-way valve, double solenoid | | | | | |
| | VSNC-F-B52-D-G14-F8 | G 1/4 | VDI/VDE 3845 NAMUR | 1350 | 17 |
| | VSNC-F-B52-D-N14-F8 | NPT 1/4 | | | |
| 5/3-way valve | | | | | |
| | VSNC-F-P53C-MD-G14-F8 | G 1/4 | VDI/VDE 3845 NAMUR | 1250 | 20 |
| | VSNC-F-P53U-MD-G14-F8 | G 1/4 | | 950 | |
| | VSNC-F-P53E-MD-G14-F8 | G 1/4 | | 1050 | |
| | VSNC-F-P53C-MD-N14-F8 | NPT 1/4 | | 1250 | |
| | VSNC-F-P53U-MD-N14-F8 | NPT 1/4 | | 950 | |
| | VSNC-F-P53E-MD-N14-F8 | NPT 1/4 | | 1050 | |

Ordering data – Product options



Configurable product
This product and all its product options can be ordered using the configurator.

The configurator can be found under Products on the DVD or at
→ www.festo.com/catalogue/...

Part No. Type
8026033 VSNC

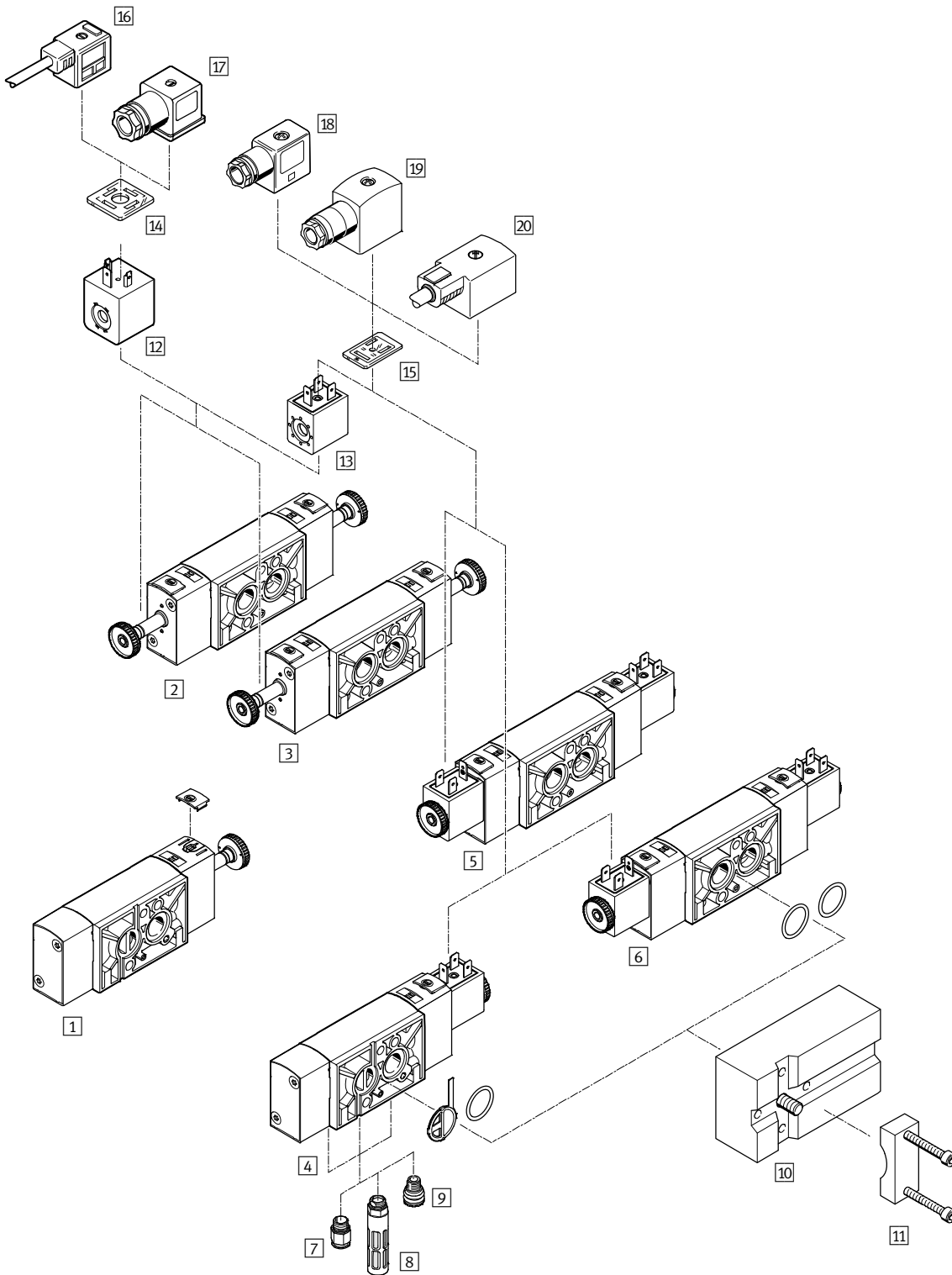
| Coils | IP65 Industrial type B | | | | | | | IP65 type A | | | | | | |
|--------------------------------------|------------------------|---------------|---------|---------|---------|----------|----------|-------------|---------|---------|---------|---------|----------|----------|
| | 12 V DC | 24 V DC | 48 V DC | 24 V AC | 48 V AC | 120 V AC | 230 V AC | 12 V DC | 24 V DC | 48 V DC | 24 V AC | 48 V AC | 120 V AC | 230 V AC |
| 5/2-way and 3/2-way, single solenoid | ■ | ■ Part no. | ■ | ■ | ■ | ■ | ■ | ■ | ■ | ■ | ■ | ■ | ■ | ■ |
| 5/2-way, double solenoid | ■ | ■ Part no. | ■ | ■ | ■ | ■ | ■ | ■ | ■ | ■ | ■ | ■ | ■ | ■ |
| 5/3 G | ■ | ■ | ■ | ■ | ■ | ■ | ■ | ■ | ■ | ■ | ■ | ■ | ■ | ■ |
| 5/3 B | ■ | ■ | ■ | ■ | ■ | ■ | ■ | ■ | ■ | ■ | ■ | ■ | ■ | ■ |
| 5/3 E | ■ | ■ | ■ | ■ | ■ | ■ | ■ | ■ | ■ | ■ | ■ | ■ | ■ | ■ |

■ = Can be combined using a modular system
Part no. = Can be ordered with part number as a fast seller

Solenoid valves VSNC

Peripherals overview VSNC-...-F8

FESTO



Solenoid valves VSNC

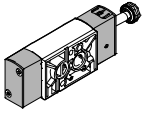
Peripherals overview VSNC-...-F8

| Mounting components and accessories | | | |
|-------------------------------------|--------------------------------------|--|-----|
| | Brief description | → Page/Internet | |
| 1 | VSNC-...-F8 Solenoid valves | 3/2-way and 5/2-way single solenoid valve with converting seal, plastic cover cap and brass armature tube, for controlling single- or double-acting actuators | 12 |
| 2 | VSNC-...-F8 Solenoid valves | 5/2-way double solenoid valve with plastic cover cap and brass armature tube, for controlling double-acting actuators | 17 |
| 3 | VSNC-...-F8 Solenoid valves | 5/3-way single solenoid valve, normally open, closed or exhausted, with plastic cover cap and brass armature tube, for controlling double-acting actuators | 20 |
| 4 | VSNC-...-F8 Solenoid valves | 3/2-way and 5/2-way single solenoid valve with converting seal, plastic cover cap, brass armature tube and 24 V DC solenoid coil, for controlling single- or double-acting actuators | 12 |
| 5 | VSNC-...-F8 Solenoid valves | 5/2-way double solenoid valve with plastic cover cap, brass armature tube and 24 V DC solenoid coil, for controlling double-acting actuators | 17 |
| 6 | VSNC-...-F8 Solenoid valves | 5/3-way single solenoid valve, normally open, closed or exhausted, with plastic cover cap, brass armature tube and 24 V DC solenoid coil, for controlling double-acting actuators | 20 |
| 7 | QS Push-in fitting | For connecting tubing with standard outside diameters | 47 |
| 8 | U Silencer | – | 47 |
| 9 | VABD-D3-SN-G14 Exhaust protection | Exhaust protection to IP65. The spring chamber of the actuator is protected against the ingress of aggressive ambient air and water by the one-way flow control system | 45 |
| 10 | VABS-S7-S-G14 Connection kit | Mounting plate for attaching the valve to a NAMUR rib | 44 |
| 11 | VAME-S7-Y Mounting bracket | Alternative option (instead of screw) of attaching the valve to a NAMUR rib with the help of a mounting bracket | 44 |
| 12 | VACF-A Solenoid coil | Electrical connection to DIN EN 175301-803, type A | 45 |
| 13 | VACF-B Solenoid coil | Electrical connection to Festo standard for MSSD-F | 45 |
| 14 | MC-LD Illuminating seal | Illuminating seal for displaying the switching status | 47 |
| 15 | MF-LD Illuminating seal | Illuminating seal for displaying the switching status | 47 |
| 16 | KMC Connecting cable | – | 46 |
| 17 | MSSD-C Plug socket | Electrical connection to DIN EN 175301-803, type A | 47 |
| 18 | MSSD-F Plug socket | Electrical connection to Festo standard with screw terminal connection | 47 |
| 19 | MSSD-F-S Plug socket | Electrical connection to Festo standard with insulation displacement connection | 47 |
| 20 | KMF Connecting cable | – | kmf |

Solenoid valves VSNC

Key features and product range overview – VSNC-...-FN

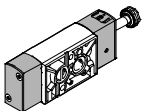
VSNC-F ... -FN



- Design of piston spool
- Valve cover cap material: Aluminium/metal
- Armature material: Stainless steel
- Pilot air (incoming air of armature tube), protected

| Version | Type | Pneumatic connection 1, 3, 5 | Pneumatic connection 2, 4, based on standard | Standard nominal flow rate [l/min] | → Page |
|---|---------------------------------|------------------------------|--|------------------------------------|--------|
| 3/2-way or 5/2-way valve -...-FN, convertible, single solenoid | | | | | |
| | VSNC-FC-M52-MD-G14-FN | G 1/4 | VDI/VDE 3845 NAMUR | 1250 | 24 |
| | VSNC-FC-M52-MD-N14-FN | NPT 1/4-18 | | | |
| | VSNC-FC-M52-MD-G14-FN-1A1-EX4-A | G 1/4 | | | |
| | VSNC-FC-M52-MD-N14-FN-1A1-EX4-A | NPT 1/4-18 | | | |
| | VSNC-FC-M52-MD-G14-GN-1A1+G | G 1/4 | | | |
| | VSNC-FC-M52-MD-G14-FN-3AA1+G | G 1/4 | | | |
| 5/2-way valve -...-FN, double solenoid | | | | | |
| | VSNC-F-B52-D-G14-FN | G 1/4 | VDI/VDE 3845 NAMUR | 1350 | 29 |
| | VSNC-F-B52-D-N14-FN | NPT 1/4-18 | | | |
| | VSNC-F-B52-D-G14-FN-1A1-EX4-A | G 1/4 | | | |
| | VSNC-F-B52-D-N14-FN-1A1-EX4-A | NPT 1/4-18 | | | |
| 5/3-way valve -...-FN | | | | | |
| | VSNC-F-P53C-MD-G14-FN | G 1/4 | VDI/VDE 3845 NAMUR | 1250 | 33 |
| | VSNC-F-P53U-MD-G14-FN | | | 950 | |
| | VSNC-F-P53E-MD-G14-FN | | | 1050 | |
| | VSNC-F-P53C-MD-N14-FN | NPT 1/4-18 | | 1250 | |
| | VSNC-F-P53U-MD-N14-FN | | | 950 | |
| | VSNC-F-P53E-MD-N14-FN | | | 1050 | |

VSNC-FT ... -FN



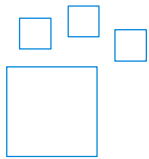
- Design of poppet seat
- Valve cover cap material: Aluminium/metal
- Armature material: Stainless steel
- Pilot air (incoming air of armature tube), protected

| Version | Type | Pneumatic connection 1, 3, 5 | Pneumatic connection 2, 4, based on standard | Standard nominal flow rate [l/min] | → Page |
|---|----------------------------|------------------------------|--|------------------------------------|--------|
| 3/2-way or 5/2-way valve -...-FN, convertible, single solenoid | | | | | |
| | VSNC-FTC-M52-MD-G14-FN | G 1/4 | VDI/VDE 3845 NAMUR | 800 | 37 |
| | VSNC-FTC-M52-MD-N14-FN | NPT 1/4-18 | | | |
| | VSNC-FTC-M52-MD-G14-FN-1A1 | G 1/4 | | | |
| 5/2-way valve -...-FN, double solenoid | | | | | |
| | VSNC-FT-B52-D-G14-FN | G 1/4 | VDI/VDE 3845 NAMUR | 1000 | 40 |
| | VSNC-FT-B52-D-N14-FN | NPT 1/4-18 | | | |
| | VSNC-FT-B52-D-G14-FN-1A1 | G 1/4 | | | |

Solenoid valves VSNC

Key features and product range overview – VSNC-...-FN

Ordering data – Product options



Configurable product
This product and all its product options can be ordered using the configurator.

The configurator can be found under Products on the DVD or at
→ www.festo.com/catalogue/...

Part No. Type
8026033 VSNC

| Coils | IP 65 | | | Ex-nA | | | Ex-ia | Ex-mb | | | AEx-m | | |
|--------------------------------------|---------|----------|----------|---------|----------|----------|----------------|---------|----------|----------|---------|----------|----------|
| | 24 V DC | 120 V AC | 230 V AC | 24 V DC | 120 V AC | 230 V AC | 24 ... 32 V DC | 24 V DC | 120 V AC | 230 V AC | 24 V DC | 120 V AC | 230 V AC |
| 5/2-way and 3/2-way, single solenoid | ■ | ■ | ■ | ■ | ■ | ■ | ■ | ■ | ■ | ■ | ■ | ■ | ■ |
| 5/2-way, double solenoid | ■ | ■ | ■ | ■ | ■ | ■ | ■ | ■ | ■ | ■ | ■ | ■ | ■ |
| 5/3 G | ■ | ■ | ■ | ■ | ■ | ■ | ■ | ■ | ■ | ■ | ■ | ■ | ■ |
| 5/3 B | ■ | ■ | ■ | ■ | ■ | ■ | ■ | ■ | ■ | ■ | ■ | ■ | ■ |
| 5/3 E | ■ | ■ | ■ | ■ | ■ | ■ | ■ | ■ | ■ | ■ | ■ | ■ | ■ |

■ = Can be combined using a modular system
Part no. = Can be ordered with part number as a fast seller

Intrinsically safe coils VACN-...-Ex4A



- Category II 2G II 2D
- Type of ignition protection Ex-ia
- IEC Ex certification
- ATEX certification

Non-sparking coils VACN-...-Ex2N



- Category II 3G II 3D
- Type of ignition protection nA
- ATEX certification

Encapsulated coils VACN-...-Ex4M



- Category II 2G II 2D
- Type of ignition protection Ex-m
- IEC Ex certification
- ATEX certification

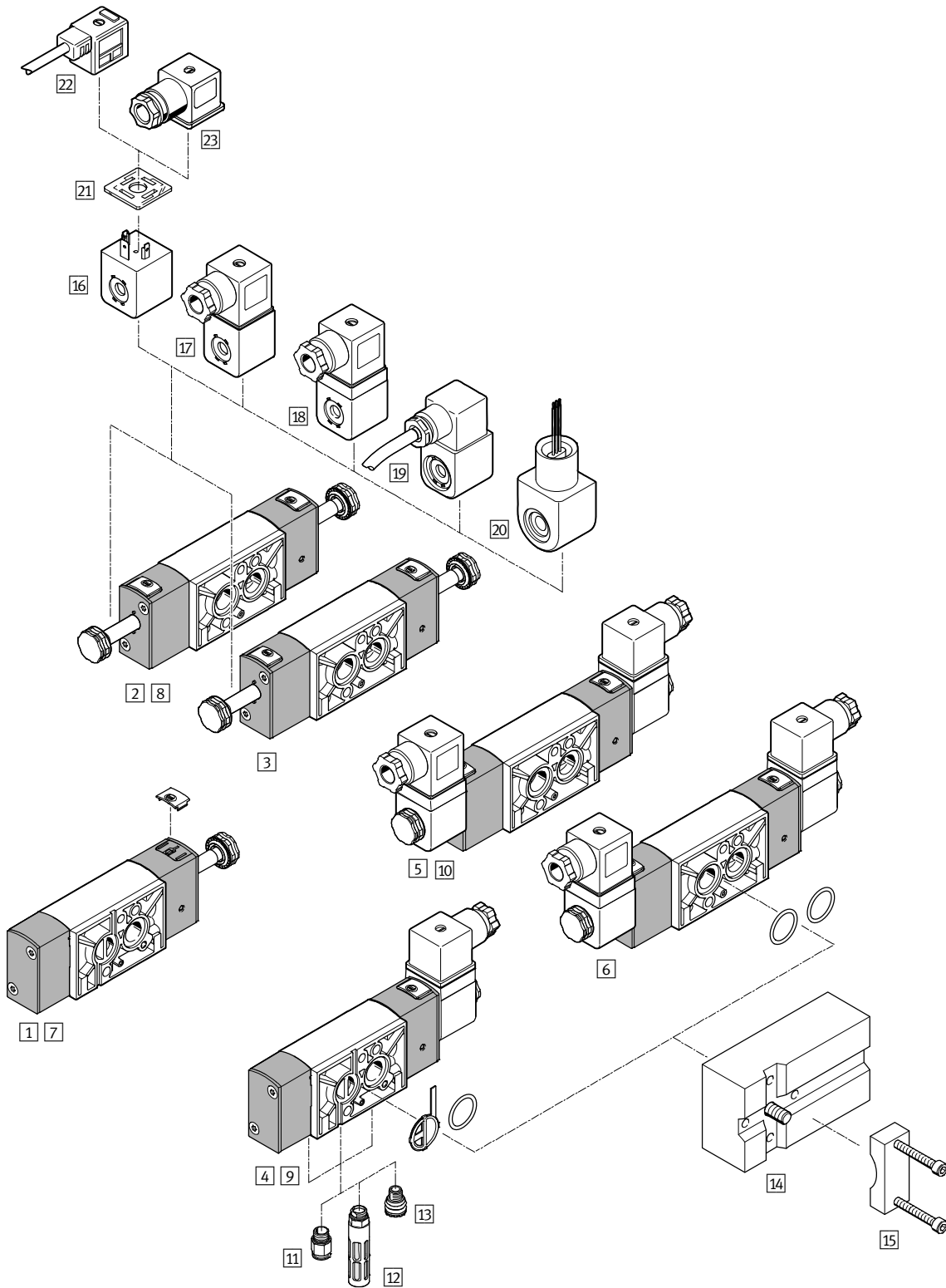
Encapsulated coils with conduit, connection VACN-...-U4M



- Class I; Div I
- Type of ignition protection AEx-...-m
- FM approval

Solenoid valves VSNC

Peripherals overview – VSNC-F...-FN



Solenoid valves VSNC

Peripherals overview – VSNC-F...-FN

| Mounting components and accessories | | | |
|-------------------------------------|--------------------------------------|--|-----|
| | Brief description | → Page/Internet | |
| 1 | VSNC-F ...-FN Piston spool | 3/2-way and 5/2-way single solenoid valve with converting seal, aluminium cover cap and stainless steel armature tube | 24 |
| 2 | | 5/2-way double solenoid valve with aluminium cover cap and stainless steel armature tube | 29 |
| 3 | | 5/3-way single solenoid valve, normally open, closed or exhausted, with aluminium cover cap and stainless steel armature tube | 33 |
| 4 | | 3/2-way and 5/2-way single solenoid valve with converting seal, aluminium cover cap and stainless steel armature tube and Ex ia solenoid coil | 24 |
| 5 | | 5/2-way double solenoid valve with aluminium cover cap and stainless steel armature tube and Ex ia solenoid coil | 29 |
| 6 | | 5/3-way single solenoid valve, normally open, closed or exhausted, with aluminium cover cap and stainless steel armature tube and Ex ia solenoid coil | 33 |
| 7 | VSNC-FT- ...-FN Poppet seat | 3/2-way and 5/2-way single solenoid valve with converting seal, aluminium cover cap and stainless steel armature tube | 37 |
| 8 | | 5/2-way double solenoid valve with aluminium cover cap and stainless steel armature tube | 40 |
| 9 | | 3/2-way and 5/2-way single solenoid valve with converting seal, aluminium cover cap and stainless steel armature tube and 24 V DC solenoid coil | 37 |
| 10 | | 5/2-way double solenoid valve with aluminium cover cap, stainless steel armature tube and 24 V DC solenoid coil | 40 |
| 11 | QS Push-in fitting | For connecting tubing with standard outside diameter | 47 |
| 12 | U Silencer | – | 47 |
| 13 | VABD-D3-SN-G14 Exhaust protection | Exhaust protection to IP65. The spring chamber of the actuator is protected against the ingress of aggressive ambient air and water by the one-way flow control system | 45 |
| 14 | VABS-S7-S-G14 Connection kit | Mounting plate for attaching the valve to a NAMUR rib | 44 |
| 15 | VAME-S7-Y Mounting bracket | Alternative option (instead of screw) for attaching the valve to a NAMUR rib with the help of a mounting bracket | 44 |
| 16 | VACN-N Solenoid coil | Electrical connection to DIN EN 175301-803, type A | – |
| 17 | VACN-N- ... -Ex2-N Solenoid coil | Type of ignition protection nA = non-sparking, for use in zone 2 | – |
| 18 | VACN-N- ... -Ex4-A Solenoid coil | Type of ignition protection iA = intrinsically safe, for use in zone 1 | – |
| 19 | VACN-N- ... -Ex4-M Solenoid coil | Type of ignition protection m = encapsulated, for use in zone 1 | – |
| 20 | VACN-N- ... -U4-M Solenoid coil | Type of ignition protection m = encapsulated, for use in Class I, Div I (American FM approval to NEC 500) | – |
| 21 | MC-LD Illuminating seal | Illuminating seal for displaying the switching status | 47 |
| 22 | KMC Connecting cable | – | kmc |
| 23 | MSSD-C Plug socket | Electrical connection to DIN EN 175301-803, type A | 47 |

Solenoid valves VSNC

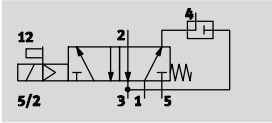
Type codes

| | | | | | | |
|---|--|--|--|--|--|--|
| | | | | | | |
| Nominal operating voltage | | | | | | |
| | None | | | | | |
| 1A | 24 V AC/50-60 Hz | | | | | |
| 3A | 230 V AC/50-60 Hz | | | | | |
| 3W | 230 V AC/240 V AC/50-60 Hz | | | | | |
| 16B | 120 V AC/60 Hz and 110 V AC/50-60 Hz | | | | | |
| 1 | 24 V DC | | | | | |
| 5 | 12 V DC | | | | | |
| Electrical connection | | | | | | |
| | None | | | | | |
| A1 | Connection pattern type A, to EN 175301 | | | | | |
| B2 | Connection pattern type B, industry standard | | | | | |
| C3 | Cable, 3 m | | | | | |
| K11 | Cable with insulating conduit connection | | | | | |
| Degree of protection for electrics | | | | | | |
| | Standard | | | | | |
| S8 | IP67 | | | | | |
| EU certification | | | | | | |
| | None | | | | | |
| EX2 | II 3GD | | | | | |
| EX4 | II 2GD | | | | | |
| Approval | | | | | | |
| | None | | | | | |
| U4 | Class 1 Div 1 to NEC 500 | | | | | |
| Type of ignition protection | | | | | | |
| | None | | | | | |
| A | Intrinsically safe | | | | | |
| M | Encapsulation | | | | | |
| N | Non-sparking | | | | | |
| Electrical accessories, valve | | | | | | |
| | None | | | | | |
| G | Connector socket without LED | | | | | |

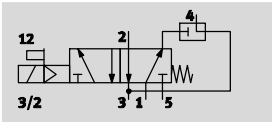
Solenoid valves VSNC

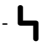


Technical data – 3/2-way or 5/2-way valve, convertible, single solenoid

Function¹⁾
5/2-way valve



3/2-way valve
with exhaust return



-  Voltage
24 V DC
-  Operating pressure
2.5 ... 10 bar
-  Temperature range
-20 ... +60 °C



¹⁾ Can be changed by exchanging the seal plate

| General technical data | | VSNC-FC- ... -G14-F8 VSNC-FC- ... -N14-F8 | VSNC-FC- ... -G14-F8-1B2 | VSNC-FC- ... -G14-F8-1A1 |
|--|-----------------|--|--------------------------|--------------------------|
| Valve function | | 3/2-way or 5/2-way, convertible | | |
| Width | [mm] | 32 | | |
| Design | | Piston spool | | |
| Sealing principle | | Soft | | |
| Type of pilot | | Electrical | | |
| Reset method | | Mechanical spring | | |
| Type of control | | Piloted | | |
| Manual override | | Detenting, non-detenting | | |
| Exhaust function | | Flow control | | |
| Vent connection | | Not ducted | | |
| Pilot air supply | | Internal | | |
| Type of mounting | | With through-hole | | |
| Mounting position | | Any | | |
| Max. tightening torque of valve mounting | [Nm] | 3.5 | | - |
| Non-overlapping | | Yes | | |
| Standard nominal flow rate | 1 → 2 [l/min] | 1250 | | |
| Exhaust air return flow rate | 4 → 3 [l/min] | 110 | | |
| b value | | 0.4 | | |
| C value | [l/sbar] | 5.2 | | |
| Pneumatic connection | 1, 3, 5 2, 4 | G 1/4, NPT 1/4 | G 1/4 | G 1/4 |
| Conforms to standard | | Port pattern to NAMUR | | |
| Certificate issuing authority | | VDI/VDE 3845 NAMUR | | |
| Certificate issuing authority | | DNVGL-TAA000011J | | |
| Product weight | [g] | 335 | 390 | 335 |

Solenoid valves VSNC

Technical data – 3/2-way or 5/2-way valve, convertible, single solenoid

| Operating and environmental conditions | | | |
|--|--|--------------------------|---------------------------|
| | VSNC-FC- ... -G14-F8 VSNC-FC- ... -N14-F8 | VSNC-FC- ... -G14-F8-1B2 | VSNC-FC- ... -G14-F8-1A1 |
| Operating medium | Compressed air to ISO 8573-1:2010 [7:4:4] | | |
| Note on operating/pilot medium | Lubricated operation possible (in which case lubricated operation will always be required) | | |
| Operating pressure [bar] | 2.5 ... 10 | | |
| Ambient temperature [°C] | -20 ... +60 | | |
| Temperature of medium [°C] | -20 ... +60 | | |
| Corrosion resistance class CRC ¹⁾ | 2 | | |
| Certification | - | | c UL us - Recognized (OL) |
| Maritime classification ²⁾ | See certificate | | - |

1) Corrosion resistance class CRC 2 to Festo standard FN 940070

Moderate corrosion stress. Indoor applications in which condensation may occur. External visible parts with primarily decorative requirements for the surface and which are in direct contact with the ambient atmosphere typical for industrial applications.

2) Additional information www.festo.com/sp → Certificates.

| Electrical data | | | |
|--------------------------------------|--|--|-------------------------------------|
| | VSNC-FC- ... -G14-F8 VSNC-FC- ... -N14-F8 | VSNC-FC- ... -G14-F8-1B2 | VSNC-FC- ... -G14-F8-1A1 |
| Electrical connection | - | 3-pin push-in connector, type B to industry standard (11 mm) | To EN 175301-803 type A |
| Coil characteristics, 24 V DC [W] | See solenoid coil, to be ordered separately | 3.3 | 2.6 |
| Permissible voltage fluctuations [%] | - | ±10 | ±10 |
| Duty cycle [%] | - | 100 | 100 |
| Degree of protection | - | IP65, IP67 | IP65, IP67 to IEC 60529 with socket |
| Switching time on [ms] | 11 | 11 | 11 |
| Switching time off [ms] | 38 | 48 | 48 |

| Materials | |
|------------|-------------------------|
| 1) Housing | Wrought aluminium alloy |
| 2) Seals | NBR |
| - | RoHS compliant |

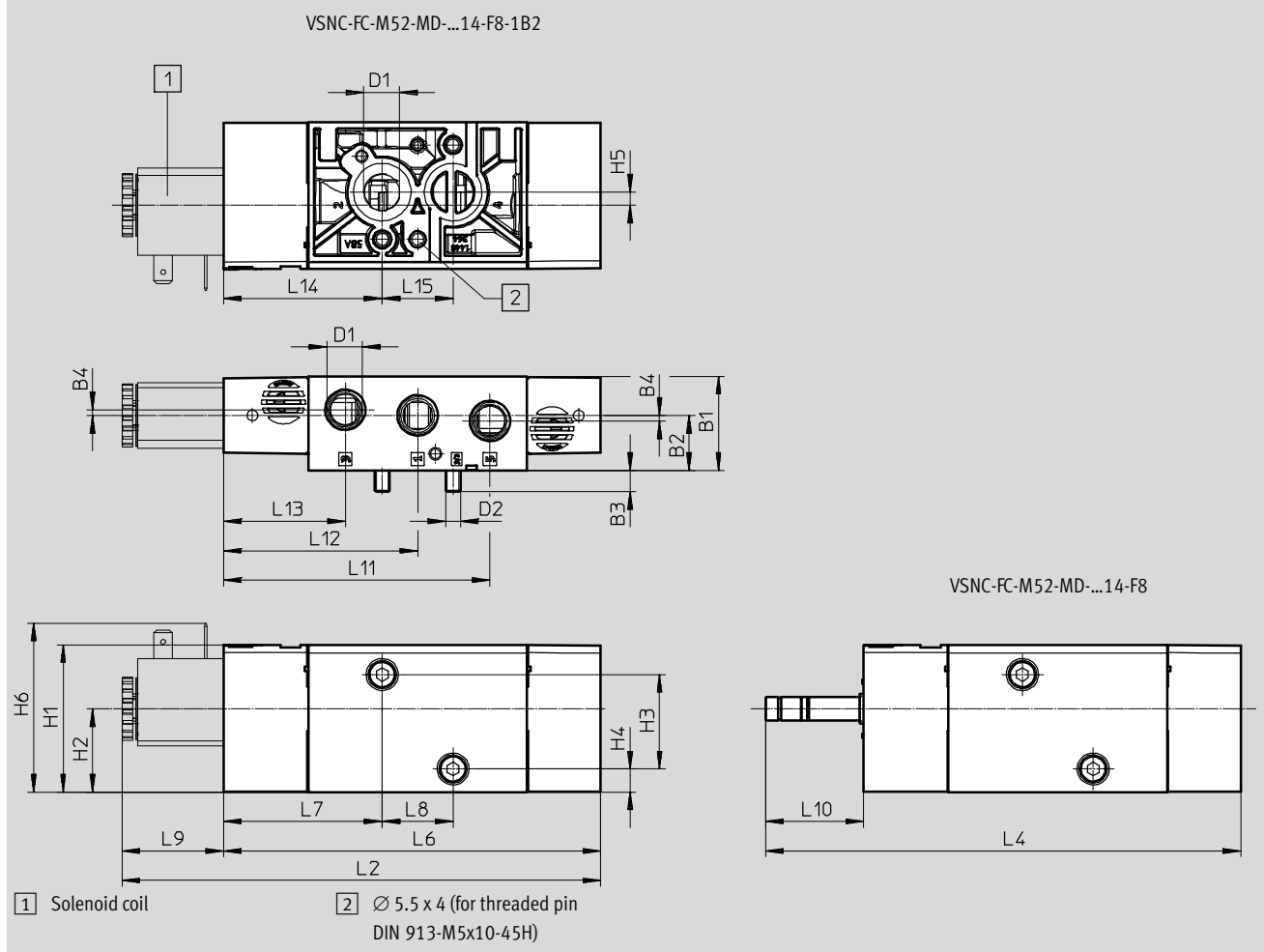
Solenoid valves VSNC

Technical data – 3/2-way or 5/2-way valve, convertible, single solenoid



Dimensions

Download CAD data → www.festo.com



| Type | B1 | B2 | B3 | B4 | D1 | D2 | H1 | H2 | H3 | H4 | H5 | H6 |
|---------------------------|------|------|-----|-----|------------|----|------|------|----|-----|-----|------|
| VSNC-FC-M52-MD-G14-F8 | 31.8 | 18.6 | 7.3 | 1.9 | G 1/4 | M5 | 49.9 | 28.2 | 32 | 7.8 | 4.4 | - |
| VSNC-FC-M52-MD-N14-F8 | | | | | NPT 1/4-18 | | | | | | | 57.2 |
| VSNC-FC-M52-MD-G14-F8-1B2 | | | | | G 1/4 | | | | | | | |

| Type | L2 | L4 | L6 | L7 | L8 | L9 | L10 | L11 | L12 | L13 | L14 | L15 |
|---------------------------|-------|-------|-------|------|----|------|------|------|------|------|------|-----|
| VSNC-FC-M52-MD-G14-F8 | 162.2 | 161.1 | 127.8 | 53.8 | 24 | 34.4 | 33.3 | 90.3 | 65.8 | 41.3 | 53.8 | 24 |
| VSNC-FC-M52-MD-N14-F8 | | | | | | | | | | | | |
| VSNC-FC-M52-MD-G14-F8-1B2 | | | | | | | | | | | | |

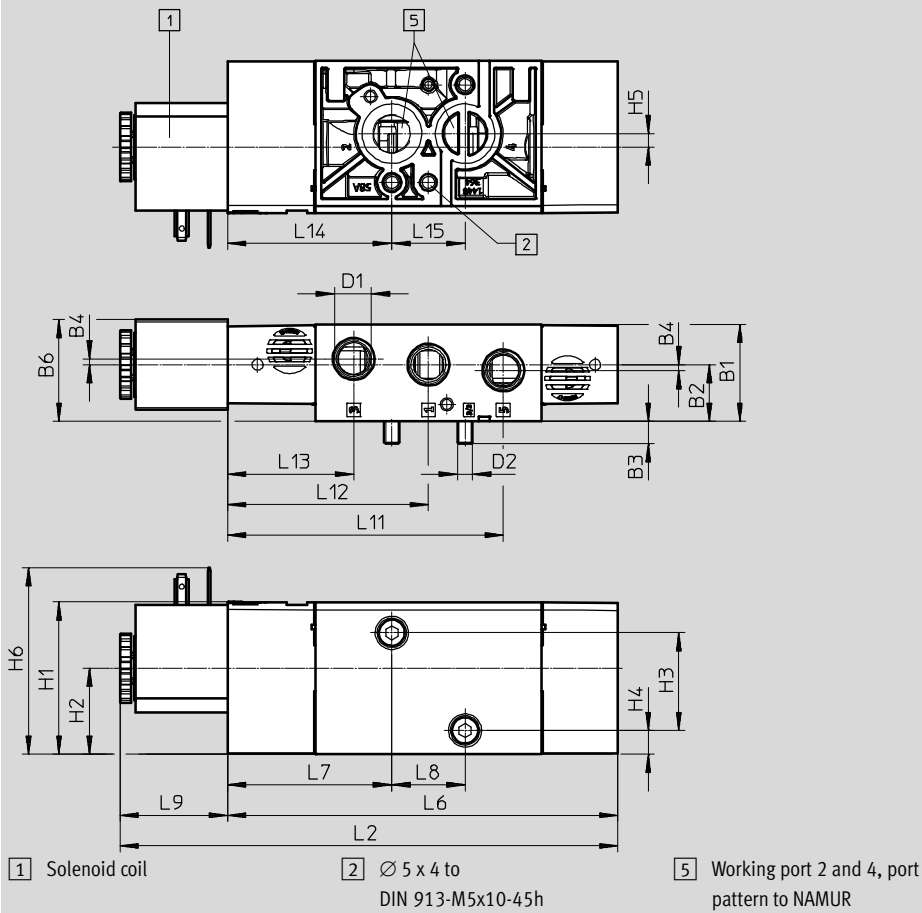
Solenoid valves VSNC

Technical data – 3/2-way or 5/2-way valve, convertible, single solenoid

Dimensions

Download CAD data → www.festo.com

VSNC-FC-M52-MD-G14-F8-1A1



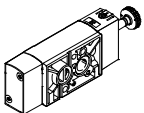
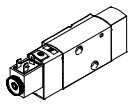
| Type | B1 | B2 | B3 | B4 | B6 | D1 | D2 | H1 | H2 | H3 | H4 | H5 |
|---------------------------|------|------|-----|-----|------|-------|----|------|------|----|-----|-----|
| VSNC-FC-M52-MD-G14-F8-1A1 | 31.8 | 18.6 | 7.3 | 1.9 | 33.3 | G 1/4 | M5 | 49.9 | 28.2 | 32 | 7.8 | 4.4 |

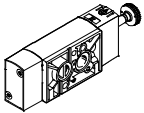
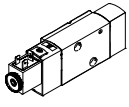
| Type | H6 | L2 | L6 | L7 | L8 | L9 | L11 | L12 | L13 | L14 | L15 |
|---------------------------|------|-----|-------|------|----|------|------|------|------|------|-----|
| VSNC-FC-M52-MD-G14-F8-1A1 | 61.1 | 163 | 127.8 | 53.8 | 24 | 35.2 | 90.3 | 65.8 | 41.3 | 53.8 | 24 |

Solenoid valves VSNC

Technical data – 3/2-way or 5/2-way valve, convertible, single solenoid

★ Core product range

| Ordering data – Valves | | | Ordering data – Valves | | |
|---|----------|-----------------------|---|----------|---------------------------|
| Directional control valve without solenoid coil | | | Directional control valve with 24 V DC solenoid coil, without socket | | |
| | Part No. | Type | | Part No. | Type |
|  | ★ 577257 | VSNC-FC-M52-MD-G14-F8 |  | ★ 577295 | VSNC-FC-M52-MD-G14-F8-1B2 |

| Ordering data – Valves | | | Ordering data – Valves | | |
|---|----------|-----------------------|---|----------|---------------------------|
| Directional control valve without solenoid coil | | | Directional control valve with 24 V DC solenoid coil, without socket | | |
| | Part No. | Type | | Part No. | Type |
|  | 577262 | VSNC-FC-M52-MD-N14-F8 |  | 8074945 | VSNC-FC-M52-MD-G14-F8-1A1 |

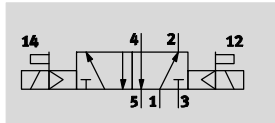
Festo core product range

- ★ Generally ready for shipping ex works in 24 hours
- ☆ Generally ready for shipping ex works in 5 days

Solenoid valves VSNC

Technical data – 5/2-way valve, double solenoid

Function
5/2-way valve



Voltage
24 V DC



Operating pressure
1.5 ... 10 bar



Temperature range
-20 ... +60 °C



| General technical data | | VSNC-F-B52-D-G14-F8 | VSNC-F-B52-D-G14-F8-1B2 |
|--|-----------------|--------------------------|-------------------------|
| | | VSNC-F-B52-D-N14-F8 | |
| Valve function | | 5/2-way, double solenoid | |
| Width | [mm] | 32 | |
| Nominal size DN | [mm] | 7.2 | |
| Design | | Piston spool | |
| Sealing principle | | Soft | |
| Type of actuation | | Electrical | |
| Type of reset | | - | |
| Type of actuation | | Piloted | |
| Manual override | | Detenting, non-detenting | |
| Type of mounting | | With through-hole | |
| Mounting position | | Any | |
| Max. tightening torque of valve mounting | [Nm] | 3.2 | |
| Non-overlapping | | Yes | |
| Standard nominal flow rate | 1 → 2 [l/min] | 1200 | |
| b value | | 0.4 | |
| C value | [l/sbar] | 5.6 | |
| Pneumatic connection | 1, 3, 5 2, 4 | G 1/4, NPT 1/4-18 | |
| Conforms to standard | | VDI/VDE 3845 (NAMUR) | |
| Certificate issuing authority | | DNVGL-TAA000011] | |
| Product weight | [g] | 345 | 455 |

Solenoid valves VSNC

Technical data – 5/2-way valve, double solenoid

| Operating and environmental conditions | | |
|--|--|-------------------------|
| | VSNC-F-B52-D-G14-F8 VSNC-F-B52-D-N14-F8 | VSNC-F-B52-D-G14-F8-1B2 |
| Operating medium | Compressed air to ISO 8573-1:2010 [7:4:4] | |
| Note on operating/pilot medium | Lubricated operation possible (in which case lubricated operation will always be required) | |
| Operating pressure [bar] | 1.5 ... 10 | |
| Ambient temperature [°C] | –20 ... +60 | |
| Temperature of medium [°C] | –20 ... +60 | |
| Corrosion resistance class CRC ¹⁾ | 2 | |
| Maritime classification ²⁾ | See certificate | |

1) Corrosion resistance class CRC 2 to Festo standard FN 940070

Moderate corrosion stress. Indoor applications in which condensation may occur. External visible parts with primarily decorative requirements for the surface and which are in direct contact with the ambient atmosphere typical for industrial applications.

2) Additional information www.festo.com/sp → Certificates.

| Electrical data | | |
|--------------------------------------|---|---|
| | VSNC-F-B52-D-G14-F8 VSNC-F-B52-D-N14-F8 | VSNC-F-B52-D-G14-F8-1B2 |
| Electrical connection | – | 3-pin push-in connector, to industry standard (11 mm), type B |
| Coil characteristics, 24 V DC [W] | See solenoid coil, to be ordered separately | 3.3 |
| Permissible voltage fluctuations [%] | – | ±10 |
| Degree of protection | – | IP65, IP67 |
| Switching time on [ms] | 11 | |

| Materials | |
|------------|-------------------------|
| 1) Housing | Wrought aluminium alloy |
| 2) Seals | NBR |
| – | RoHS compliant |

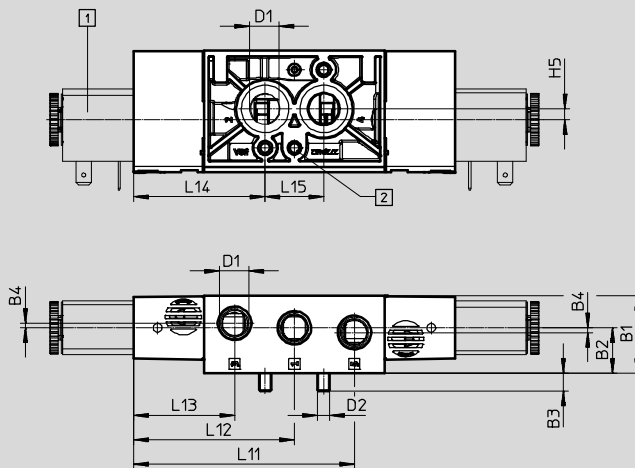
Solenoid valves VSNC

Technical data – 5/2-way valve, double solenoid

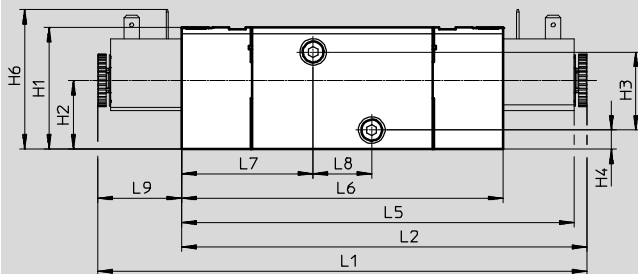
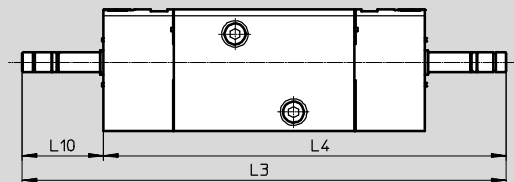
Dimensions

Download CAD data → www.festo.com

VSNC-F-B52-D-...14-F8-1B2



VSNC-F-B52-D-...14-F8



- 1 Solenoid coil
- 2 $\varnothing 5.5 \times 4$ (for threaded pin DIN 913-M5x10-45H)

| Type | B1 | B2 | B3 | B4 | D1 | D2 | H1 | H2 | H3 | H4 | H5 | H6 | L1 | L2 |
|-------------------------|------|------|-----|-----|------------|----|------|------|----|-----|-----|----|----|----|
| VSNC-F-B52-D-G14-F8 | 31.8 | 18.6 | 7.3 | 1.9 | G 1/4 | M5 | 49.9 | 28.2 | 32 | 7.8 | 4.4 | - | - | - |
| VSNC-F-B52-D-N14-F8 | | | | | NPT 1/4-18 | | | | | | | | | |
| VSNC-F-B52-D-G14-F8-1B2 | | | | | G 1/4 | | | | | | | | | |

| Type | L3 | L4 | L5 | L6 | L7 | L8 | L9 | L10 | L11 | L12 | L13 | L14 | L15 |
|-------------------------|-------|-------|-------|-------|------|----|----|------|------|------|------|------|-----|
| VSNC-F-B52-D-G14-F8 | 198.2 | 164.9 | - | 131.6 | 53.8 | 24 | - | 33.3 | 90.3 | 65.8 | 41.3 | 53.8 | 24 |
| VSNC-F-B52-D-N14-F8 | | | 160.6 | | | | | | | | | | |
| VSNC-F-B52-D-G14-F8-1B2 | | | 34.4 | | | | | | | | | | |

Ordering data – Valves

Directional control valve without solenoid coil

Directional control valve with solenoid coil

| | Part No. | Type | | Part No. | Type |
|--|----------|---------------------|--|----------|-------------------------|
| | 577258 | VSNC-F-B52-D-G14-F8 | | 577296 | VSNC-F-B52-D-G14-F8-1B2 |
| | 577263 | VSNC-F-B52-D-N14-F8 | | | |

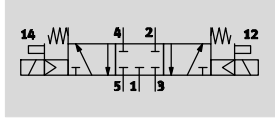
Solenoid valves VSNC

Technical data – 5/3-way valve

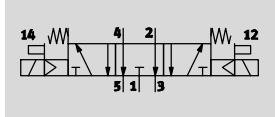
FESTO

Function

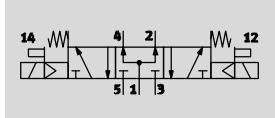
5/3-way valve, closed





5/3-way valve, exhausted



5/3-way valve, pressurised



 - Operating pressure
3 ... 10 bar

 - Temperature range
-20 ... +60 °C



| General technical data | | | | |
|--|-----------------|--|--|--|
| | | VSNC-F-P53C-MD-G14-F8 VSNC-F-P53C-MD-N14-F8 | VSNC-F-P53E-MD-G14-F8 VSNC-F-P53E-MD-N14-F8 | VSNC-F-P53U-MD-G14-F8 VSNC-F-P53U-MD-N14-F8 |
| Valve function | | 5/3-way, closed | 5/3-way, exhausted | 5/3-way, pressurised |
| Width | [mm] | 32 | | |
| Nominal width | [mm] | 7.2 | 6 | 6 |
| Design | | Piston spool | | |
| Sealing principle | | Soft | | |
| Type of actuation | | Electrical | | |
| Reset method | | Mechanical spring | | |
| Type of control | | Piloted | | |
| Manual override | | Non-detenting, non-detenting | | |
| Type of mounting | | With through-hole | | |
| Mounting position | | Any | | |
| Max. tightening torque of valve mounting | [Nm] | 3.5 | | |
| Non-overlapping | | Yes | | |
| Standard nominal flow rate | 1 → 2 [l/min] | 1200 | 800 | 800 |
| b value | | 0.4 | 0.4 | 0.5 |
| C value | [l/sbar] | 5.2 | 4.4 | 2.1 |
| Pneumatic connection | 1, 3, 5 2, 4 | G 1/4, NPT 1/4-18 | | |
| Conforms to standard | | Port pattern to NAMUR | | |
| Certificate issuing authority | | VDI/VDE 3845 (NAMUR) | | |
| Certificate issuing authority | | DINVGL-TAA000011J | | |
| Product weight | [g] | 345 | | |

Solenoid valves VSNC

Technical data – 5/3-way valve

| Operating and environmental conditions | | | |
|--|--|--|--|
| | VSNC-F-P53C-MD-G14-F8 VSNC-F-P53C-MD-N14-F8 | VSNC-F-P53E-MD-G14-F8 VSNC-F-P53E-MD-N14-F8 | VSNC-F-P53U-MD-G14-F8 VSNC-F-P53U-MD-N14-F8 |
| Operating medium | Compressed air to ISO 8573-1:2010 [7:4:4] | | |
| Note on operating/pilot medium | Lubricated operation possible (in which case lubricated operation will always be required) | | |
| Operating pressure [bar] | 3 ... 10 | | |
| Ambient temperature [°C] | -20 ... +60 | | |
| Temperature of medium [°C] | -20 ... +60 | | |
| Corrosion resistance class CRC ¹⁾ | 2 | | |
| Maritime classification ²⁾ | See certificate | | |

1) Corrosion resistance class CRC 2 to Festo standard FN 940070

Moderate corrosion stress. Indoor applications in which condensation may occur. External visible parts with primarily decorative requirements for the surface and which are in direct contact with the ambient atmosphere typical for industrial applications.

2) Additional information www.festo.com/sp → Certificates.

| Electrical data | | | |
|-------------------------|--|--|--|
| | VSNC-F-P53C-MD-G14-F8 VSNC-F-P53C-MD-N14-F8 | VSNC-F-P53E-MD-G14-F8 VSNC-F-P53E-MD-N14-F8 | VSNC-F-P53U-MD-G14-F8 VSNC-F-P53U-MD-N14-F8 |
| Coil characteristics | See solenoid coil, to be ordered separately | | |
| Switching time on [ms] | 13 | 14 | 14 |
| Switching time off [ms] | 42 | 48 | 48 |
| Changeover time [ms] | 26 | 25 | 25 |

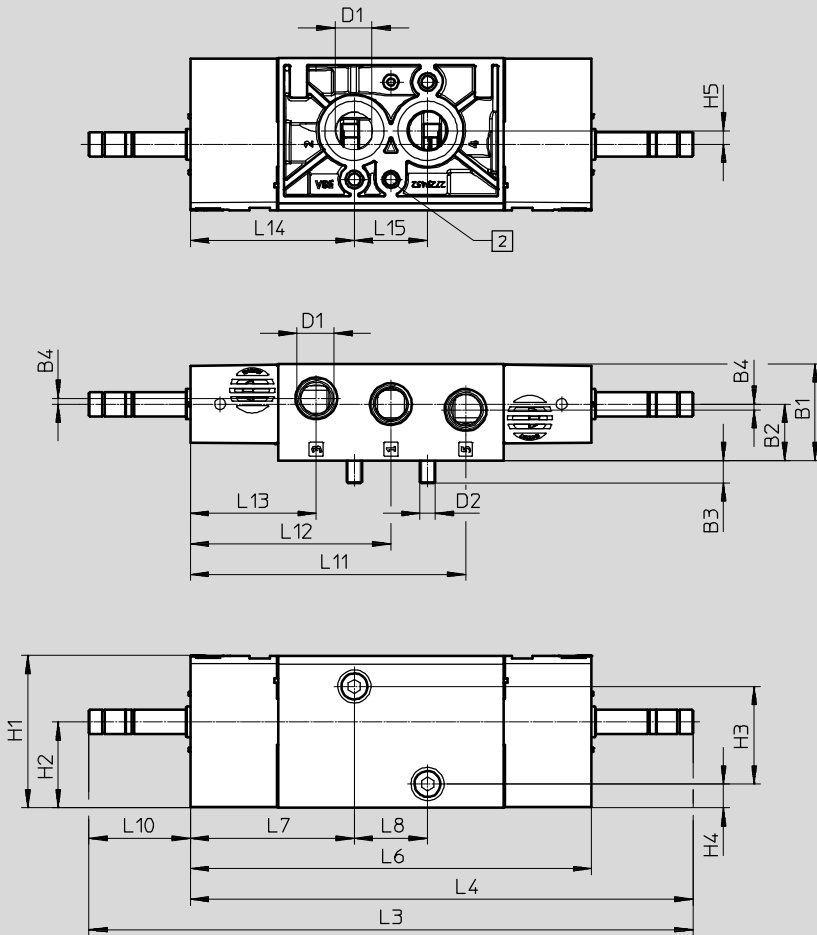
| Materials | |
|------------|-------------------------|
| 1) Housing | Wrought aluminium alloy |
| 2) Seals | NBR |
| – | RoHS compliant |

Solenoid valves VSNC

Technical data – 5/3-way valve

Dimensions

Download CAD data → www.festo.com



2 ∅ 5.5 x 4 (for threaded pin
DIN 913-M5x10-45H)

| Type | B1 | B2 | B3 | B4 | D1 | D2 | H1 | H2 | H3 | H4 | H5 |
|-----------------------|------|------|-----|-----|-------|----|------|------|----|-----|-----|
| VSNC-F-P53C-MD-G14-F8 | 31.8 | 18.6 | 7.3 | 1.9 | G 1/4 | M5 | 49.9 | 28.2 | 32 | 7.8 | 4.4 |
| VSNC-F-P53U-MD-G14-F8 | | | | | | | | | | | |
| VSNC-F-P53E-MD-G14-F8 | | | | | | | | | | | |
| VSNC-F-P53C-MD-N14-F8 | | | | | | | | | | | |
| VSNC-F-P53U-MD-N14-F8 | | | | | | | | | | | |
| VSNC-F-P53E-MD-N14-F8 | | | | | | | | | | | |

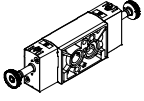
| Type | L3 | L4 | L6 | L7 | L8 | L10 | L11 | L12 | L13 | L14 | L15 |
|-----------------------|-------|-------|-------|------|----|------|------|------|------|------|-----|
| VSNC-F-P53C-MD-G14-F8 | 198.2 | 164.9 | 131.6 | 53.8 | 24 | 33.3 | 90.3 | 65.8 | 41.3 | 53.8 | 24 |
| VSNC-F-P53U-MD-G14-F8 | | | | | | | | | | | |
| VSNC-F-P53E-MD-G14-F8 | | | | | | | | | | | |
| VSNC-F-P53C-MD-N14-F8 | | | | | | | | | | | |
| VSNC-F-P53U-MD-N14-F8 | | | | | | | | | | | |
| VSNC-F-P53E-MD-N14-F8 | | | | | | | | | | | |

Solenoid valves VSNC

Technical data – 5/3-way valve

Ordering data – Valves

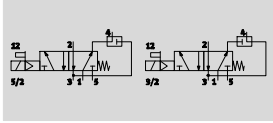
Directional control valve without solenoid coil

| | Part No. | Type |
|---|----------|-----------------------|
|  | 577259 | VSNC-F-P53C-MD-G14-F8 |
| | 577260 | VSNC-F-P53U-MD-G14-F8 |
| | 577261 | VSNC-F-P53E-MD-G14-F8 |
| | 577264 | VSNC-F-P53C-MD-N14-F8 |
| | 577265 | VSNC-F-P53U-MD-N14-F8 |
| | 577266 | VSNC-F-P53E-MD-N14-F8 |
| | | |

Solenoid valves VSNC

Technical data – 3/2-way or 5/2-way -...-FN, convertible, single solenoid

Function
3/2-way or 5/2-way valve,
convertible



- Operating pressure
2.5 ... 8 bar

- Temperature range
-20 ... +60 °C



| General technical data | | VSNC- ... -G14-FN VSNC- ... -N14-FN | VSNC- ... -G14-FN-1A1-EX4-A VSNC- ... -N14-FN-1A1-EX4-A | VSNC- ... -G14-FN-1A1+G VSNC- ... -G14-FN-3AA1+G |
|-------------------------------|------------------------------|--|--|---|
| Valve function | | 3/2-way or 5/2-way, convertible | | |
| Width | [mm] | 32 | | |
| Design | | Piston spool | | |
| Sealing principle | | Soft | | |
| Type of actuation | | Electrical | | |
| Reset method | | Mechanical spring | | |
| Type of control | | Piloted | | |
| Pilot air supply port | | Internal | | |
| Exhaust air function | | With flow control | | |
| Manual override | | Detenting, non-detenting | | |
| Type of mounting | | With through-hole | | |
| Connection for venting hole | | Not ducted | | |
| Mounting position | | Any | | |
| Non-overlapping | | Yes | | |
| Standard nominal flow rate | 1 → 2 [l/min] | 1250 | | |
| | Exhaust return 4 → 3 [l/min] | 110 | | |
| b value | | 0.4 | | |
| C value | [l/sbar] | 5.2 | | |
| Pneumatic connection | 1, 3, 5 2, 4 | G 1/4, NPT 1/4 | | G 1/4 |
| Conforms to standard | | VDI/VDE 3845 (NAMUR) | | |
| Certificate issuing authority | | DNVGL-TAA000011] | | |
| Product weight | [g] | 415 | | |

| Operating and environmental conditions | | VSNC- ... -G14-FN VSNC- ... -N14-FN | VSNC- ... -G14-FN-1A1-EX4-A VSNC- ... -N14-FN-1A1-EX4-A | VSNC- ... -G14-FN-1A1+G VSNC- ... -G14-FN-3AA1+G |
|--|-------|--|--|---|
| Operating medium | | Compressed air to ISO 8573-1:2010 [7:4:4] | | |
| Note on operating/pilot medium | | Lubricated operation possible (in which case lubricated operation will always be required) | | |
| Operating pressure | [bar] | 2.5 ... 8 | | |
| Ambient temperature | [°C] | -20 ... +60 | | |
| Temperature of medium | [°C] | -20 ... +60 | | |
| Corrosion resistance class CRC ¹⁾ | | 2 | | |
| Maritime classification ²⁾ | | See certificate | | |

1) Corrosion resistance class CRC 2 to Festo standard FN 940070
Moderate corrosion stress. Indoor applications in which condensation may occur. External visible parts with primarily decorative requirements for the surface and which are in direct contact with the ambient atmosphere typical for industrial applications.

2) Additional information www.festo.com/sp → Certificates.

Solenoid valves VSNC

Technical data – 3/2-way or 5/2-way -...-FN, convertible, single solenoid

| ATEX | | | |
|---|---|--|---|
| | VSNC- ... -G14-FN VSNC- ... -N14-FN | VSNC- ... -G14-FN-1A1-EX4-A VSNC- ... -N14-FN-1A1-EX4-A | VSNC- ... -G14-FN-1A1+G VSNC- ... -G14-FN-3AA1+G |
| ATEX category gas | – | II 2G | – |
| Type of ignition protection for gas | – | Ex ia IIC T6 Ga | – |
| ATEX category dust | – | II 2D | – |
| Type of ignition protection for dust | – | Ex t IIIC T80°C Db | – |
| Explosion protection certification outside the EU | – | EPL Db (IEC-EX) | – |
| | – | EPL Ga (IEC-EX) | – |
| Explosion-proof temperature [°C] | – | -40 °C ≤ Ta ≤ +50 °C | – |
| Degree of protection | – | IP65 | IP65 |
| | – | IP67 | IP67 |
| | – | | To IEC 60529, with socket |
| CE marking (see declaration of conformity) | As per EU Explosion Protection Directive (ATEX) | | – |

| Electrical data | | | |
|---|---|--|---|
| | VSNC- ... -G14-FN VSNC- ... -N14-FN | VSNC- ... -G14-FN-1A1-EX4-A VSNC- ... -N14-FN-1A1-EX4-A | VSNC- ... -G14-FN-1A1+G VSNC- ... -G14-FN-3AA1+G |
| Electrical connection | – | Type A, to EN 175301-803 | Type A, to EN 175301-803 |
| Coil characteristics 24 V DC [W] | See solenoid coil, to be ordered separately | – | 0.7 |
| Coil characteristics 230 V AC, 50/60 Hz | | | |
| Pick-up power rating [VA] | – | – | 6.2 |
| Holding power [VA] | – | – | 3.7 |
| Duty cycle [%] | 100 | | |
| Switching time on [ms] | 32 | 35 | 35 |
| Switching time off [ms] | 92 | | |
| Permissible voltage fluctuations [%] | – | ± 10 | ± 10 |

| Materials | |
|-----------|----------------------------|
| 1 Housing | Wrought aluminium alloy |
| 2 Seals | NBR |
| 3 Screws | High-alloy stainless steel |
| – | RoHS compliant |

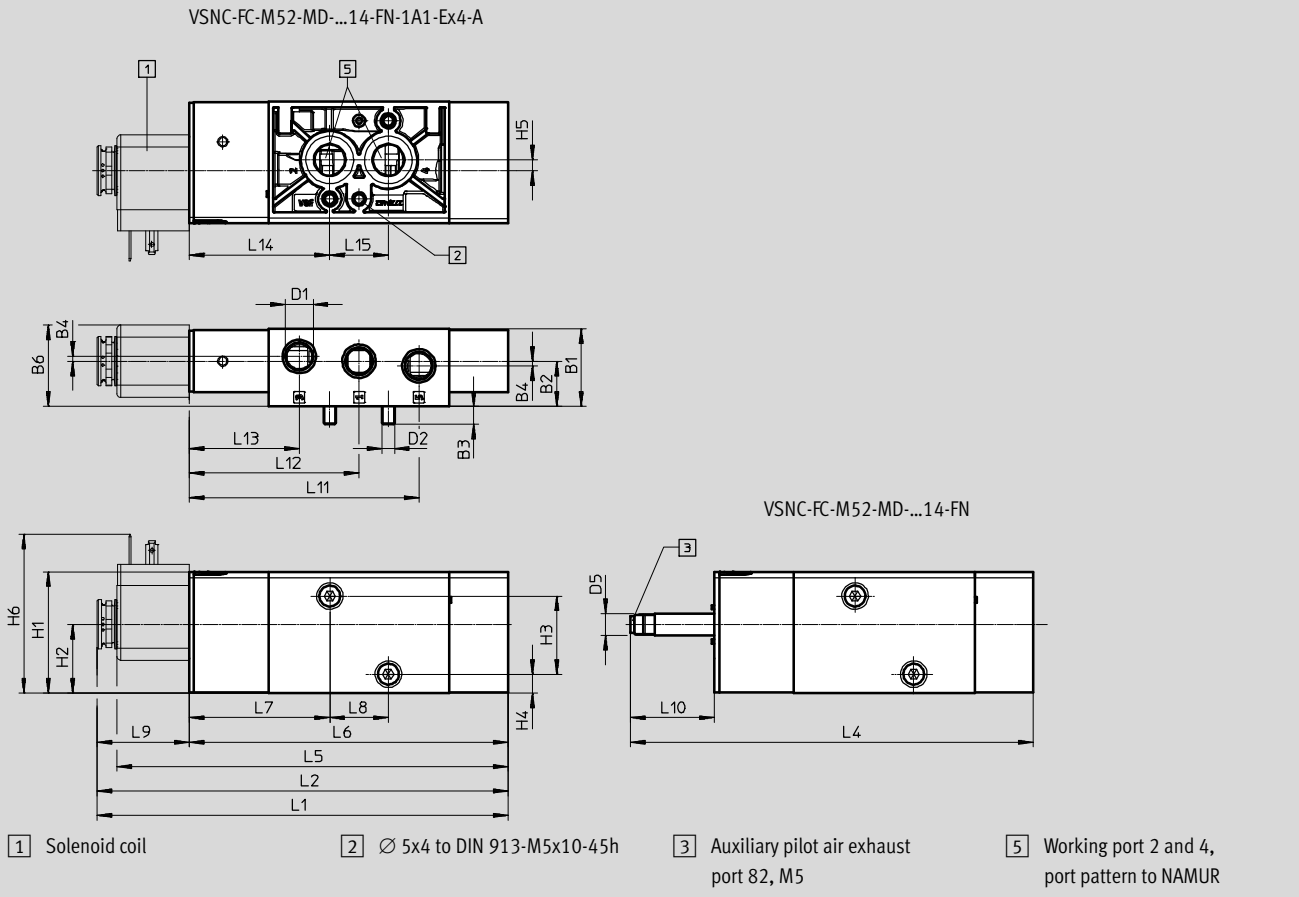
Solenoid valves VSNC

Technical data – 3/2-way or 5/2-way -...-FN, convertible, single solenoid



Dimensions

Download CAD data → www.festo.com



| Type | B1 | B2 | B3 | B4 | B6 | D1 | D2 | D5 | H1 | H2 | H3 | H4 | H5 | H6 |
|---------------------------------|------|------|-----|-----|------|-------|----|----|------|------|----|-----|-----|----|
| VSNC-FC-M52-MD-G14-FN | 31.8 | 18.6 | 7.3 | 1.9 | 33.4 | G 1/4 | M5 | 9 | 49.8 | 28.2 | 32 | 7.8 | 4.4 | - |
| VSNC-FC-M52-MD-G14-FN-1A1-Ex4-A | | | | | | 65.1 | | | | | | | | |
| VSNC-FC-M52-MD-N14-FN | | | | | | - | | | | | | | | |
| VSNC-FC-M52-MD-N14-FN-1A1-Ex4-A | | | | | | 65.1 | | | | | | | | |

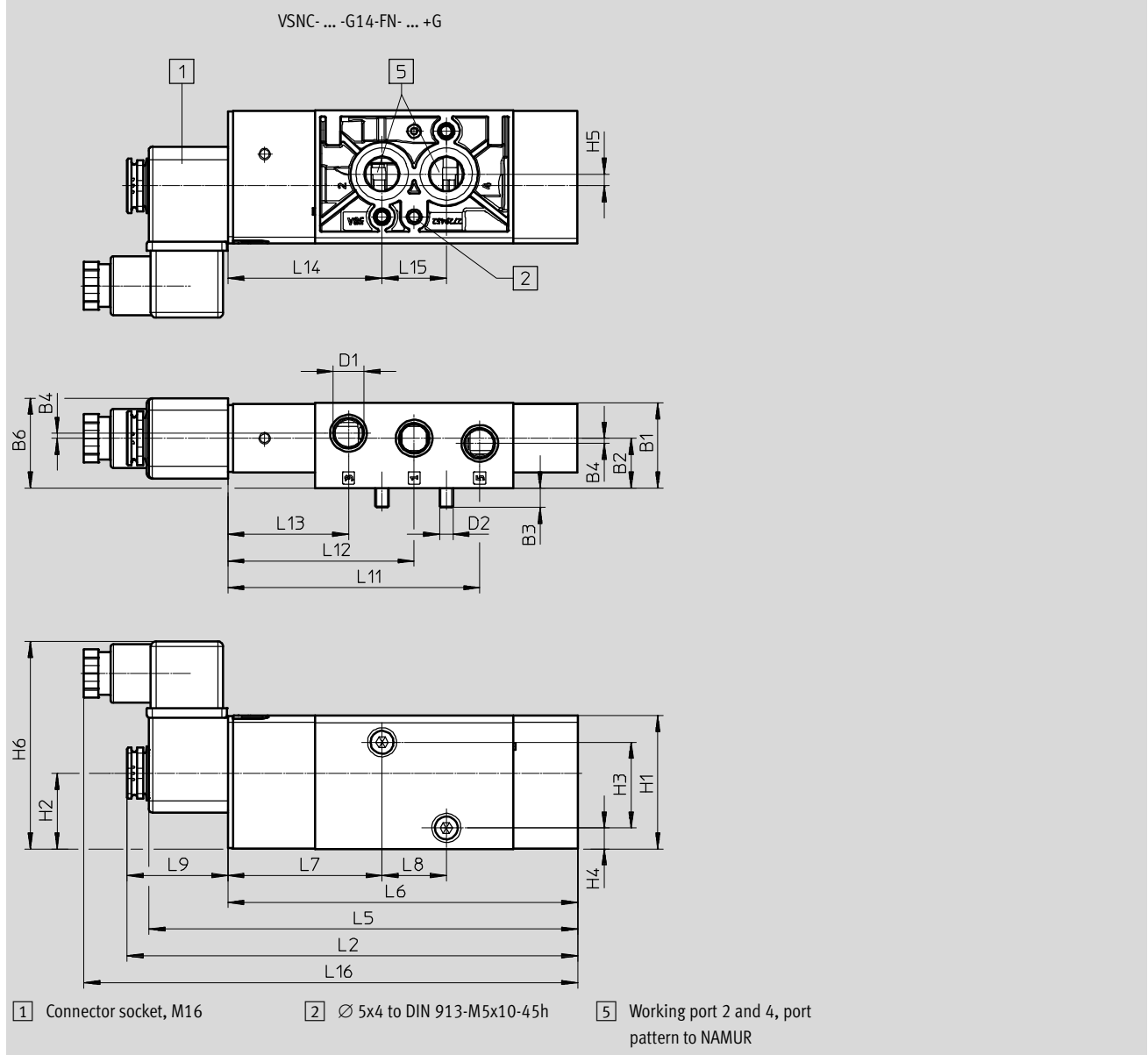
| Type | L2 | L4 | L5 | L6 | L7 | L8 | L9 | L10 | L11 | L12 | L13 | L14 | L15 |
|---------------------------------|-------|-----|-------|-------|------|----|------|------|------|------|------|------|-----|
| VSNC-FC-M52-MD-G14-FN | - | 165 | - | 130.6 | 57.6 | 24 | - | 34.4 | 94.1 | 69.6 | 45.1 | 57.6 | 24 |
| VSNC-FC-M52-MD-G14-FN-1A1-Ex4-A | 168.3 | | 160.1 | | | | 37.7 | | | | | | |
| VSNC-FC-M52-MD-N14-FN | - | | - | | | | - | | | | | | |
| VSNC-FC-M52-MD-N14-FN-1A1-Ex4-A | 168.3 | | 160.1 | | | | 37.7 | | | | | | |

Solenoid valves VSNC

Technical data – 3/2-way or 5/2-way ...-FN, convertible, single solenoid

Dimensions

Download CAD data → www.festo.com



| Type | B1 | B2 | B3 | B4 | B6 | D1 | D2 | H1 | H2 | H3 | H4 | H5 | H6 |
|-------------------------------|------|------|-----|-----|------|-------|----|------|------|----|-----|-----|------|
| VSNC-FC-M52-MD-G14-FN- ... +G | 31.8 | 18.6 | 7.3 | 1.9 | 33.3 | G 1/4 | M5 | 49.8 | 28.2 | 32 | 7.8 | 4.4 | 77.5 |

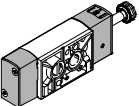
| Type | L2 | L5 | L6 | L7 | L8 | L9 | L11 | L12 | L13 | L14 | L15 | L16 |
|-------------------------------|-------|-------|-------|------|----|------|------|------|------|------|-----|-------|
| VSNC-FC-M52-MD-G14-FN- ... +G | 168.3 | 160.1 | 130.6 | 57.6 | 24 | 37.7 | 94.1 | 69.6 | 45.1 | 57.6 | 24 | 184.4 |

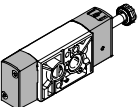
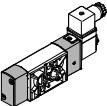
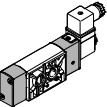
Solenoid valves VSNC

Technical data – 3/2-way or 5/2-way -...-FN, convertible, single solenoid



★ Core product range

| Ordering data – Valves | | |
|---|----------|-----------------------|
| Directional control valve without solenoid coil | | |
| | Part No. | Type |
|  | ★ 577267 | VSNC-FC-M52-MD-G14-FN |

| Ordering data – Valves | | |
|---|----------|---------------------------------|
| Directional control valve without solenoid coil | | |
| | Part No. | Type |
|  | 577272 | VSNC-FC-M52-MD-N14-FN |
| Directional control valve with solenoid coil and socket | | |
|  | 8078398 | VSNC-FC-M52-MD-G14-FN-1A1+G |
| | 8078399 | VSNC-FC-M52-MD-G14-FN-3AA1+G |
| Directional control valve with Ex i solenoid coil including socket | | |
|  | 577281 | VSNC-FC-M52-MD-G14-FN-1A1-Ex4-A |
| | 577286 | VSNC-FC-M52-MD-N14-FN-1A1-Ex4-A |

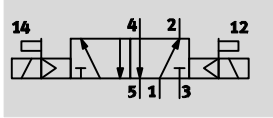
Festo core product range


- ★ Generally ready for shipping ex works in 24 hours
- ☆ Generally ready for shipping ex works in 5 days


Solenoid valves VSNC

Technical data – 5/2-way -...-FN, double solenoid

Function
5/2-way valve, double solenoid



 - Operating pressure
1.5 ... 8 bar

 - Temperature range
-20 ... +60 °C



| General technical data | | VSNC-F-B52-D-G14-FN VSNC-F-B52-D-N14-FN | VSNC-F-B52-D-G14-FN-1A1-EX4-A VSNC-F-B52-D-N14-FN-1A1-EX4-A |
|-------------------------------|-----------------|--|--|
| Valve function | | 5/2-way, double solenoid | |
| Width | [mm] | 32 | |
| Design | | Piston spool | |
| Sealing principle | | Soft | |
| Type of actuation | | Electrical | |
| Type of control | | Piloted | |
| Pilot air supply port | | Internal | |
| Exhaust air function | | With flow control | |
| Manual override | | Non-detenting, detenting | |
| Type of mounting | | With through-hole | |
| Connection for venting hole | | Not ducted | |
| Mounting position | | Any | |
| Non-overlapping | | Yes | |
| Standard nominal flow rate | [l/min] | 1350 | |
| b value | | 0.4 | |
| C value | [l/sbar] | 5.6 | |
| Pneumatic connection | 1, 3, 5 2, 4 | G 1/4, NPT 1/4-18 Port pattern to NAMUR | |
| Conforms to standard | | VDI/VDE 3845 (NAMUR) | |
| Certificate issuing authority | | DNVGL-TAA000011] | |
| Product weight | [g] | 461 | |

| Operating and environmental conditions | | VSNC-F-B52-D-G14-FN VSNC-F-B52-D-N14-FN | VSNC-F-B52-D-G14-FN-1A1-EX4-A VSNC-F-B52-D-N14-FN-1A1-EX4-A |
|--|-------|--|--|
| Operating medium | | Compressed air to ISO 8573-1:2010 [7:4:4] | |
| Note on operating/pilot medium | | Lubricated operation possible (in which case lubricated operation will always be required) | |
| Operating pressure | [bar] | 1.5 ... 8 | |
| Ambient temperature | [°C] | -20 ... +60 | |
| Temperature of medium | [°C] | -20 ... +60 | |
| Corrosion resistance class CRC ¹⁾ | | 2 | |
| Maritime classification ²⁾ | | See certificate | |

- 1) Corrosion resistance class CRC 2 to Festo standard FN 940070
Moderate corrosion stress. Indoor applications in which condensation may occur. External visible parts with primarily decorative requirements for the surface and which are in direct contact with the ambient atmosphere typical for industrial applications.
- 2) Additional information www.festo.com/sp → Certificates.

Solenoid valves VSNC

Technical data – 5/2-way -...-FN, double solenoid



| ATEX | | |
|---|---|--|
| | VSNC-F-B52-D-G14-FN VSNC-F-B52-D-N14-FN | VSNC-F-B52-D-G14-FN-1A1-Ex4-A VSNC-F-B52-D-N14-FN-1A1-Ex4-A |
| ATEX category gas | – | II 2G |
| Type of ignition protection for gas | – | Ex ia IIC T6 Ga |
| ATEX category dust | – | II 2D |
| Type of ignition protection for dust | – | Ex t IIIIC T80°C Db |
| Explosion protection certification outside the EU | – | EPL Db (IEC-EX) |
| | – | EPL Ga (IEC-EX) |
| Explosion-proof temperature [°C] | – | –40 °C ≤ Ta ≤ +50 °C |
| Degree of protection | – | IP65 |
| | – | IP67 |
| CE marking (see declaration of conformity) | As per EU Explosion Protection Directive (ATEX) | |

| Electrical data | | |
|--------------------------------------|---|--|
| | VSNC-F-B52-D-G14-FN VSNC-F-B52-D-N14-FN | VSNC-F-B52-D-G14-FN-1A1-Ex4-A VSNC-F-B52-D-N14-FN-1A1-Ex4-A |
| Electrical connection | – | Type A, to EN 175301-803 |
| Coil characteristics | See solenoid coil, to be ordered separately | |
| Changeover time [ms] | 20 | |
| Permissible voltage fluctuations [%] | – | ± 10 |

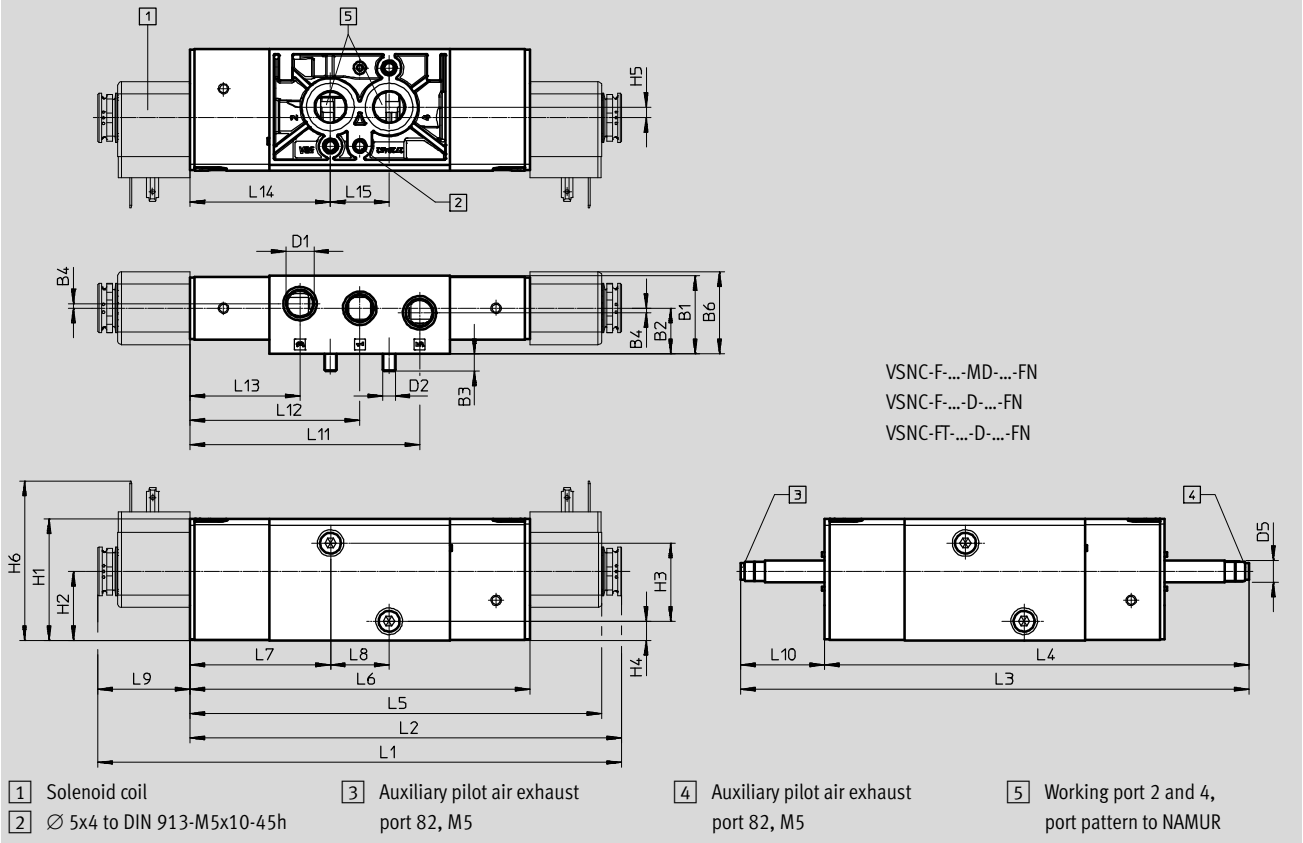
| Materials | | |
|-----------|-------------------------|--|
| 1 Housing | Wrought aluminium alloy | |
| 2 Seals | NBR | |
| – | RoHS compliant | |

Solenoid valves VSNC

Technical data – 5/2-way -...-FN, double solenoid

Dimensions

Download CAD data → www.festo.com

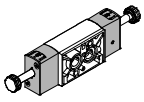
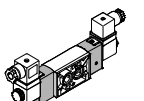


| Type | B1 | B2 | B3 | B4 | B6 | D1 | D2 | D5 - \varnothing | H1 | H2 | H3 | H4 | H5 | H6 | L1 |
|-------------------------------|------|------|-----|-----|------|-------|----|-----------------------|------|------|----|-----|-----|-------|----|
| VSNC-F-B52-D-G14-FN | 31.8 | 18.6 | 7.3 | 1.9 | 33.4 | G 1/4 | M5 | 9 | 49.8 | 28.2 | 32 | 7.8 | 4.4 | - | - |
| VSNC-F-B52-D-G14-FN-1A1-Ex4-A | | | | | | 65.1 | | | | | | | | 214.5 | |
| VSNC-F-B52-D-N14-FN | | | | | | - | | | | | | | | - | |
| VSNC-F-B52-D-N14-FN-1A1-Ex4-A | | | | | | 65.1 | | | | | | | | 214.5 | |

| Type | L2 | L3 | L4 | L5 | L6 | L7 | L8 | L9 | L10 | L11 | L12 | L13 | L14 | L15 |
|-------------------------------|-------|-----|-------|-------|-------|------|----|------|------|------|------|------|------|-----|
| VSNC-F-B52-D-G14-FN | - | 208 | 173.6 | - | 139.2 | 57.6 | 24 | - | 34.4 | 94.1 | 69.6 | 45.1 | 57.6 | 24 |
| VSNC-F-B52-D-G14-FN-1A1-Ex4-A | 176.9 | | | 168.7 | | | | 37.7 | | | | | | |
| VSNC-F-B52-D-N14-FN | - | | | - | | | | - | | | | | | |
| VSNC-F-B52-D-N14-FN-1A1-Ex4-A | 176.9 | | | 168.7 | | | | 37.7 | | | | | | |

Solenoid valves VSNC

Technical data – 5/2-way -...-FN, double solenoid

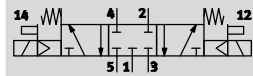
| Ordering data – Valves | | |
|---|----------|-------------------------------|
| Directional control valve without solenoid coil | | |
| | Part No. | Type |
|  | 577268 | VSNC-F-B52-D-G14-FN |
| | 577273 | VSNC-F-B52-D-N14-FN |
| Directional control valve with Ex i solenoid coil including socket | | |
|  | 577282 | VSNC-F-B52-D-G14-FN-1A1-Ex4-A |
| | 577287 | VSNC-F-B52-D-N14-FN-1A1-Ex4-A |

Solenoid valves VSNC

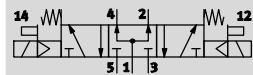
Technical data – 5/3-way -...-FN

Function

5/3-way valve, closed





5/3-way valve, exhausted



5/3-way valve, pressurised



 - Operating pressure
3 ... 8 bar

 - Temperature range
-20 ... +60 °C



| General technical data | | | | |
|-------------------------------|-----------------|--|--|--|
| | | VSNC-F-P53C-MD-G14-FN VSNC-F-P53C-MD-N14-FN | VSNC-F-P53U-MD-G14-FN VSNC-F-P53U-MD-N14-FN | VSNC-F-P53E-MD-G14-FN VSNC-F-P53E-MD-N14-FN |
| Valve function | | 5/3 | | |
| | | Closed | Pressurised | Exhausted |
| Width | [mm] | 32 | | |
| Design | | Piston spool | | |
| Sealing principle | | Soft | | |
| Type of actuation | | Electrical | | |
| Reset method | | Mechanical spring | | |
| Type of control | | Piloted | | |
| Pilot air supply port | | Internal | | |
| Exhaust air function | | With flow control | | |
| Manual override | | Non-detenting, detenting | | |
| Type of mounting | | With through-hole | | |
| Connection for venting hole | | Not ducted | | |
| Mounting position | | Any | | |
| Non-overlapping | | Yes | | |
| Standard nominal flow rate | [l/min] | 1250 | 950 | 1050 |
| b value | | 0.4 | 0.5 | 0.4 |
| C value | [l/sbar] | 5.2 | 2.1 | 4.4 |
| Pneumatic connection | 1, 3, 5 2, 4 | G 1/4, NPT 1/4-18 | | |
| Conforms to standard | | Port pattern to NAMUR | | |
| Certificate issuing authority | | VDI/VDE 3845 (NAMUR) | | |
| | | DNVGL-TAA000011] | | |
| Product weight | [g] | 461 | | |

Solenoid valves VSNC

Technical data – 5/3-way -...-FN



| Operating and environmental conditions | | VSNC-F-P53C-MD-G14-FN VSNC-F-P53C-MD-N14-FN | VSNC-F-P53U-MD-G14-FN VSNC-F-P53U-MD-N14-FN | VSNC-F-P53E-MD-G14-FN VSNC-F-P53E-MD-N14-FN |
|--|-------|--|--|--|
| Operating medium | | Compressed air to ISO 8573-1:2010 [7:4:4] | | |
| Note on operating/pilot medium | | Lubricated operation possible (in which case lubricated operation will always be required) | | |
| Operating pressure | [bar] | 3 ... 8 | | |
| Ambient temperature | [°C] | -20 ... +60 | | |
| Temperature of medium | [°C] | -20 ... +60 | | |
| Corrosion resistance class CRC ¹⁾ | | 2 | | |
| Maritime classification ²⁾ | | See certificate | | |

- 1) Corrosion resistance class CRC 2 to Festo standard FN 940070
Moderate corrosion stress. Indoor applications in which condensation may occur. External visible parts with primarily decorative requirements for the surface and which are in direct contact with the ambient atmosphere typical for industrial applications.
- 2) Additional information www.festo.com/sp → Certificates.

| Electrical data | | VSNC-F-P53C-MD-G14-FN VSNC-F-P53C-MD-N14-FN | VSNC-F-P53U-MD-G14-FN VSNC-F-P53U-MD-N14-FN | VSNC-F-P53E-MD-G14-FN VSNC-F-P53E-MD-N14-FN |
|----------------------|------|--|--|--|
| Coil characteristics | | See solenoid coil, to be ordered separately | | |
| Switching time on | [ms] | 23 | | |
| Switching time off | [ms] | 103 | | |
| Changeover time | [ms] | 55 | | |

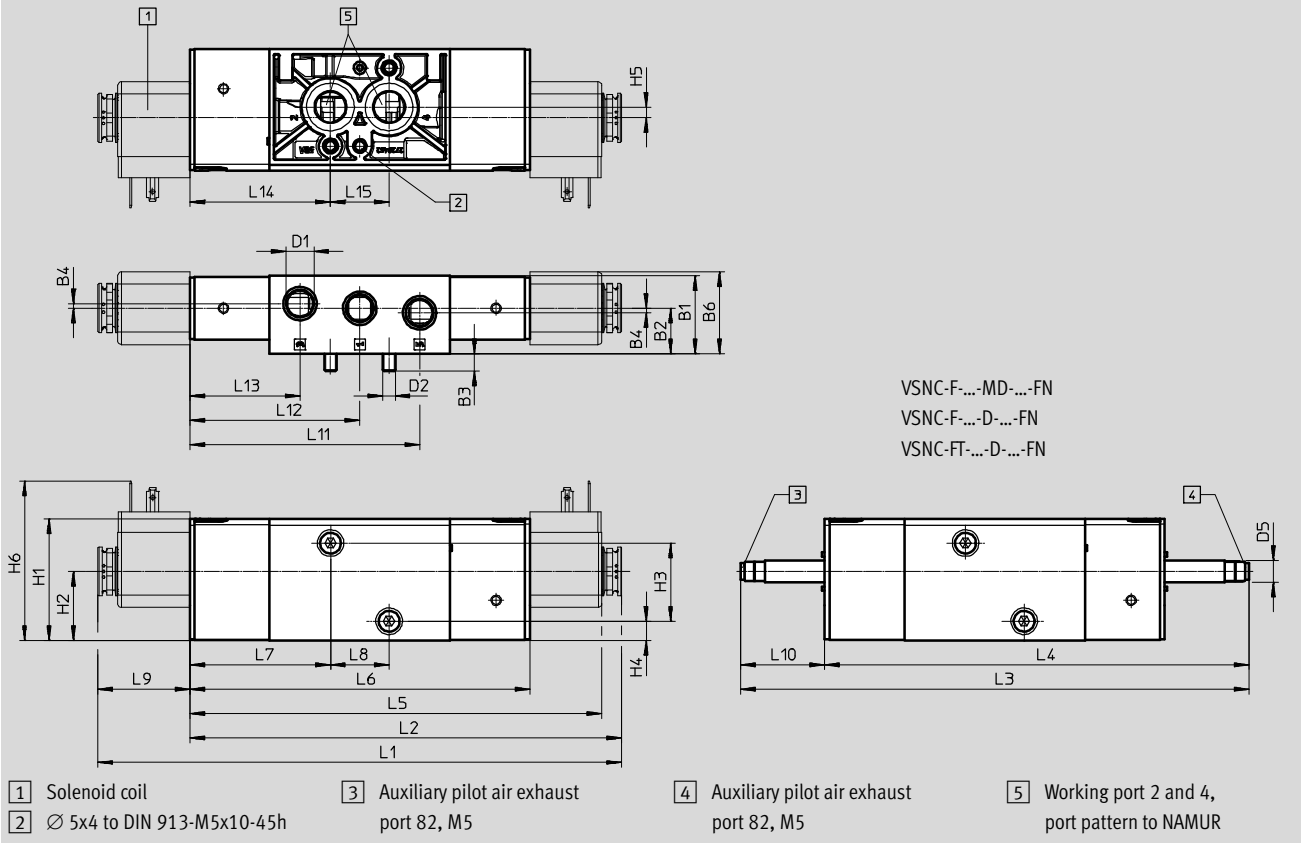
| Materials | | |
|-----------|---------|-------------------------|
| 1 | Housing | Wrought aluminium alloy |
| 2 | Seals | NBR |
| | – | RoHS compliant |

Solenoid valves VSNC

Technical data – 5/3-way -...-FN

Dimensions

Download CAD data → www.festo.com

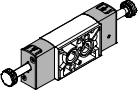
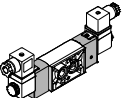


| Type | B1 | B2 | B3 | B4 | B6 | D1 | D2 | D5 Ø | H1 | H2 | H3 | H4 | H5 | H6 | L1 |
|-----------------------|------|------|-----|-----|------|-------|----|---------|------|------|----|-----|-----|----|----|
| VSNC-F-P53C-MD-G14-FN | 31.8 | 18.6 | 7.3 | 1.9 | 33.4 | G 1/4 | M5 | 9 | 49.8 | 28.2 | 32 | 7.8 | 4.4 | - | - |
| VSNC-F-P53U-MD-G14-FN | | | | | | | | | | | | | | | |
| VSNC-F-P53E-MD-G14-FN | | | | | | | | | | | | | | | |
| VSNC-F-P53C-MD-N14-FN | | | | | | | | | | | | | | | |
| VSNC-F-P53U-MD-N14-FN | | | | | | | | | | | | | | | |
| VSNC-F-P53E-MD-N14-FN | | | | | | | | | | | | | | | |

| Type | L2 | L3 | L4 | L5 | L6 | L7 | L8 | L9 | L10 | L11 | L12 | L13 | L14 | L15 |
|-----------------------|----|-----|-------|----|-------|------|----|----|------|------|------|------|------|-----|
| VSNC-F-P53C-MD-G14-FN | - | 208 | 173.6 | - | 139.2 | 57.6 | 24 | - | 34.4 | 94.1 | 69.6 | 45.1 | 57.6 | 24 |
| VSNC-F-P53U-MD-G14-FN | | | | | | | | | | | | | | |
| VSNC-F-P53E-MD-G14-FN | | | | | | | | | | | | | | |
| VSNC-F-P53C-MD-N14-FN | | | | | | | | | | | | | | |
| VSNC-F-P53U-MD-N14-FN | | | | | | | | | | | | | | |
| VSNC-F-P53E-MD-N14-FN | | | | | | | | | | | | | | |

Solenoid valves VSNC

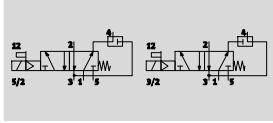
Technical data – 5/3-way -...-FN


| Ordering data – Valves | | |
|---|----------|-----------------------|
| Directional control valve without solenoid coil | | |
| | Part No. | Type |
|  | 577269 | VSNC-F-P53C-MD-G14-FN |
| | 577270 | VSNC-F-P53U-MD-G14-FN |
| | 577271 | VSNC-F-P53E-MD-G14-FN |
| Directional control valve with 24 V DC solenoid coil | | |
|  | 577274 | VSNC-F-P53C-MD-N14-FN |
| | 577275 | VSNC-F-P53U-MD-N14-FN |
| | 577276 | VSNC-F-P53E-MD-N14-FN |


Solenoid valves VSNC

Technical data – 3/2-way or 5/2-way -...-FN poppet seat, convertible, single solenoid

Function
3/2-way or 5/2-way valve,
convertible



-  - Operating pressure
2.5 ... 8 bar

-  - Temperature range
-20 ... +60 °C



| General technical data | | VSNC-FTC-M52-MD-G14-FN VSNC-FTC-M52-MD-N14-FN | VSNC-FTC-M52-MD-G14-FN-1A1 |
|-------------------------------|------------------------------|--|----------------------------|
| Valve function | | 3/2-way or 5/2-way, convertible | |
| Width | [mm] | 32 | |
| Design | | Poppet seat | |
| Sealing principle | | Soft | |
| Type of actuation | | Electrical | |
| Reset method | | Mechanical spring | |
| Type of control | | Piloted | |
| Pilot air supply port | | Internal | |
| Exhaust air function | | With flow control | |
| Manual override | | Non-detenting, detenting | |
| Type of mounting | | With through-hole | |
| Connection for venting hole | | Not ducted | |
| Mounting position | | Any | |
| Non-overlapping | | No | |
| Direction of flow | | Non-reversible | |
| Standard nominal flow rate | 1 → 2 [l/min] | 800 | |
| | Exhaust return 4 → 3 [l/min] | 800 | |
| b value | | 0.15 | |
| C value | [l/sbar] | 3.96 | |
| Pneumatic connection | 1, 3, 5 2, 4 | G 1/4 Port pattern to NAMUR | |
| Conforms to standard | | VDI/VDE 3845 (NAMUR) | |
| Certificate issuing authority | | DNVGL-TAA000011] | |
| Degree of protection | | - | IP65, IP67 |
| Product weight | [g] | 404 | 440 |

Solenoid valves VSNC

Technical data – 3/2-way or 5/2-way -...-FN poppet seat, convertible, single solenoid

| Operating and environmental conditions | |
|--|--|
| Operating medium | Compressed air to ISO 8573-1:2010 [7:4:4] |
| Note on operating/pilot medium | Lubricated operation possible (in which case lubricated operation will always be required) |
| Operating pressure [bar] | 2.5 ... 8 |
| Ambient temperature [°C] | -20 ... 60 |
| Temperature of medium [°C] | -20 ... 60 |
| Corrosion resistance class CRC ¹⁾ | 2 |
| Maritime classification ²⁾ | See certificate |

- 1) Corrosion resistance class CRC 2 to Festo standard FN 940070
Moderate corrosion stress. Indoor applications in which condensation may occur. External visible parts with primarily decorative requirements for the surface and which are in direct contact with the ambient atmosphere typical for industrial applications.
- 2) Additional information www.festo.com/sp → Certificates.

| Electrical data | VSNC-FTC-M52-MD-G14-FN | VSNC-FTC-M52-MD-G14-FN-1A1 |
|--------------------------------------|---|----------------------------|
| | VSNC-FTC-M52-MD-N14-FN | |
| Electrical connection | – | Type A to EN 175301-803 |
| Coil characteristics, 24 V DC [W] | See solenoid coil, to be ordered separately | 0.7 |
| Switching time on [ms] | 16 | 16 |
| Switching time off [ms] | 120 | 120 |
| Permissible voltage fluctuations [%] | – | ±10 |

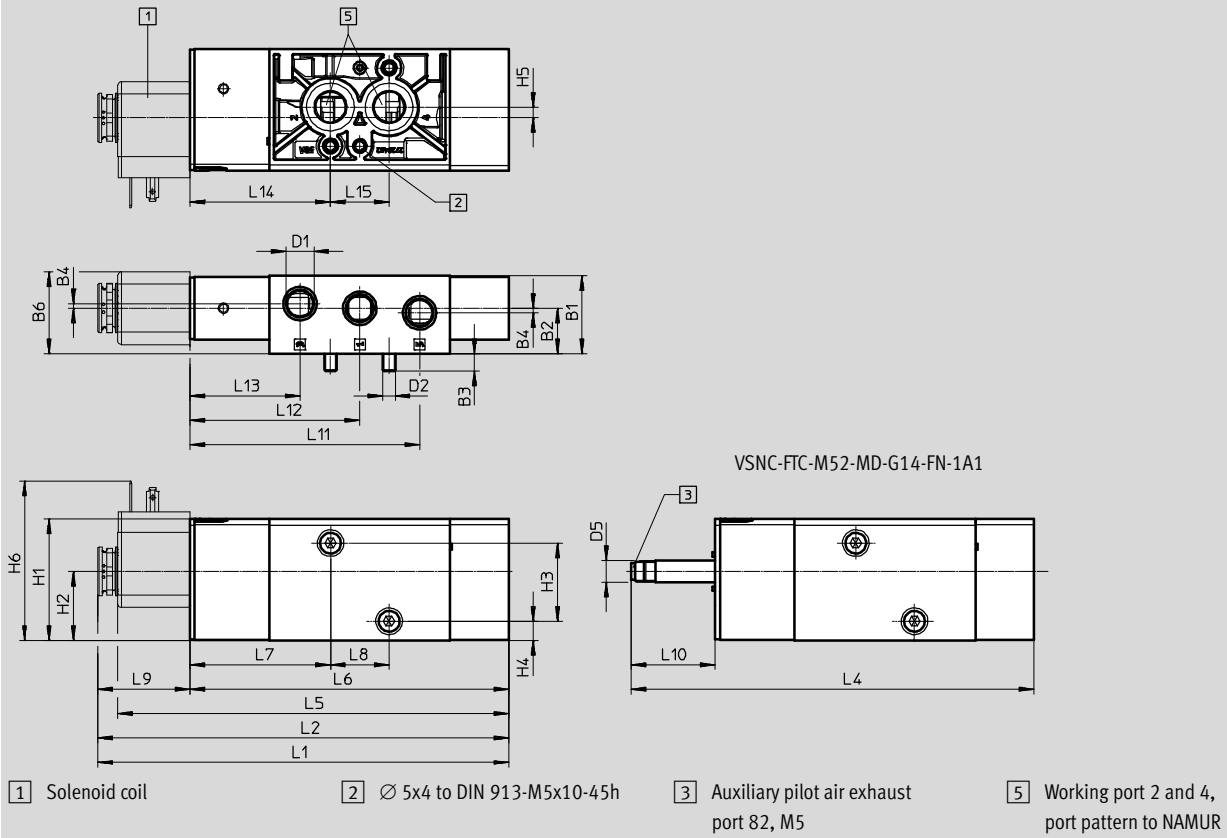
| Materials | |
|------------|-------------------------|
| 1) Housing | Wrought aluminium alloy |
| 2) Seals | NBR |
| – | RoHS compliant |

Solenoid valves VSNC

Technical data – 3/2-way or 5/2-way -...-FN poppet seat, convertible, single solenoid

Dimensions

Download CAD data → www.festo.com

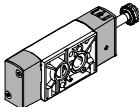


| Type | B1 | B2 | B3 | B4 | B6 | D1 | D2 | D5 ∅ | H1 | H2 | H3 | H4 | H5 | H6 |
|----------------------------|------|------|-----|-----|------|---------|----|---------|------|------|----|-----|-----|----|
| VSNC-FTC-M52-MD-G14-FN | 31.8 | 18.6 | 7.3 | 1.9 | 33.4 | G 1/4 | M5 | 9 | 49.8 | 28.2 | 32 | 7.8 | 4.4 | - |
| VSNC-FTC-M52-MD-G14-FN-1A1 | | | | | | NPT 1/4 | | | | | | | | |
| VSNC-FTC-M52-MD-N14-FN-1A1 | | | | | | | | | | | | | | |

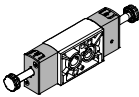
| Type | L2 | L4 | L5 | L6 | L7 | L8 | L9 | L10 | L11 | L12 | L13 | L14 | L15 |
|----------------------------|----|-----|-------|-------|------|----|------|------|------|------|------|------|-----|
| VSNC-FTC-M52-MD-G14-FN | - | 165 | - | 130.6 | 57.6 | 24 | - | 34.4 | 94.1 | 69.6 | 45.1 | 57.6 | 24 |
| VSNC-FTC-M52-MD-G14-FN-1A1 | | | - | | | | - | | | | | | |
| VSNC-FTC-M52-MD-N14-FN-1A1 | | | 160.1 | | | | 37.7 | | | | | | |

Ordering data – Valves

Directional control valve without solenoid coil

| | Part No. | Type |
|---|----------|------------------------|
|  | 577277 | VSNC-FTC-M52-MD-G14-FN |
| | 577279 | VSNC-FTC-M52-MD-N14-FN |

Directional control valve with 24 V DC solenoid coil

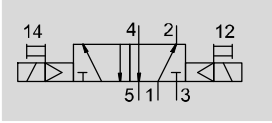
| | Part No. | Type |
|---|----------|----------------------------|
|  | 577297 | VSNC-FTC-M52-MD-G14-FN-1A1 |

Solenoid valves VSNC

Technical data – 5/2-way, double solenoid



Function
3/2-way or 5/2-way valve,
convertible



- - Operating pressure
1.5 ... 8 bar

- - Temperature range
-20 ... +60 °C



| General technical data | | VSNC-FT-B52-D-G14-FN VSNC-FT-B52-D-N14-FN | VSNC-FT-B52-D-G14-FN-1A1 |
|-------------------------------|-----------------|--|--------------------------|
| Valve function | | 5/2-way, double solenoid | |
| Width | [mm] | 32 | |
| Design | | Poppet seat | |
| Sealing principle | | Soft | |
| Type of actuation | | Electrical | |
| Reset method | | Mechanical spring | |
| Type of control | | Piloted | |
| Pilot air supply port | | Internal | |
| Exhaust air function | | With flow control | |
| Manual override | | Non-detenting, detenting | |
| Type of mounting | | With through-hole | |
| Connection for venting hole | | Not ducted | |
| Mounting position | | Any | |
| Non-overlapping | | No | |
| Direction of flow | | Non-reversible | |
| Standard nominal flow rate | [l/min] | 1000 | |
| b value | | 0.24 | |
| C value | [l/sbar] | 4.6 | |
| Pneumatic connection | 1, 3, 5 2, 4 | G 1/4 or NPT 1/4-18 Port pattern to NAMUR | |
| Conforms to standard | | VDI/VDE 3845 (NAMUR) | |
| Certificate issuing authority | | DNVGL-TAA000011] | |
| Degree of protection | | - | IP65, IP67 |
| Product weight | [g] | 519 | 670 |

Solenoid valves VSNC

Technical data – 5/2-way, double solenoid

| Operating and environmental conditions | | |
|--|-------|--|
| Operating medium | | Compressed air to ISO 8573-1:2010 [7:4:4] |
| Note on operating/pilot medium | | Lubricated operation possible (in which case lubricated operation will always be required) |
| Operating pressure | [bar] | 1.5 ... 8 |
| Ambient temperature | [°C] | -20 ... +60 |
| Temperature of medium | [°C] | -20 ... +60 |
| Corrosion resistance class CRC ¹⁾ | | 2 |
| Maritime classification ²⁾ | | See certificate |

1) Corrosion resistance class CRC 2 to Festo standard FN 940070

Moderate corrosion stress. Indoor applications in which condensation may occur. External visible parts with primarily decorative requirements for the surface and which are in direct contact with the ambient atmosphere typical for industrial applications.

2) Additional information www.festo.com/sp → Certificates.

| Electrical data | | | |
|----------------------------------|------|--|--------------------------|
| | | VSNC-FT-B52-D-G14-FN VSNC-FT-B52-D-N14-FN | VSNC-FT-B52-D-G14-FN-1A1 |
| Electrical connection | | – | Type A to EN 175301-803 |
| Coil characteristics, 24 V DC | [W] | See solenoid coil, to be ordered separately | 0.7 |
| Changeover time | [ms] | 16 | 16 |
| Permissible voltage fluctuations | [%] | – | ±10 |

| Materials | | |
|-----------|---------|-------------------------|
| 1 | Housing | Wrought aluminium alloy |
| 2 | Seals | NBR |
| – | | RoHS compliant |

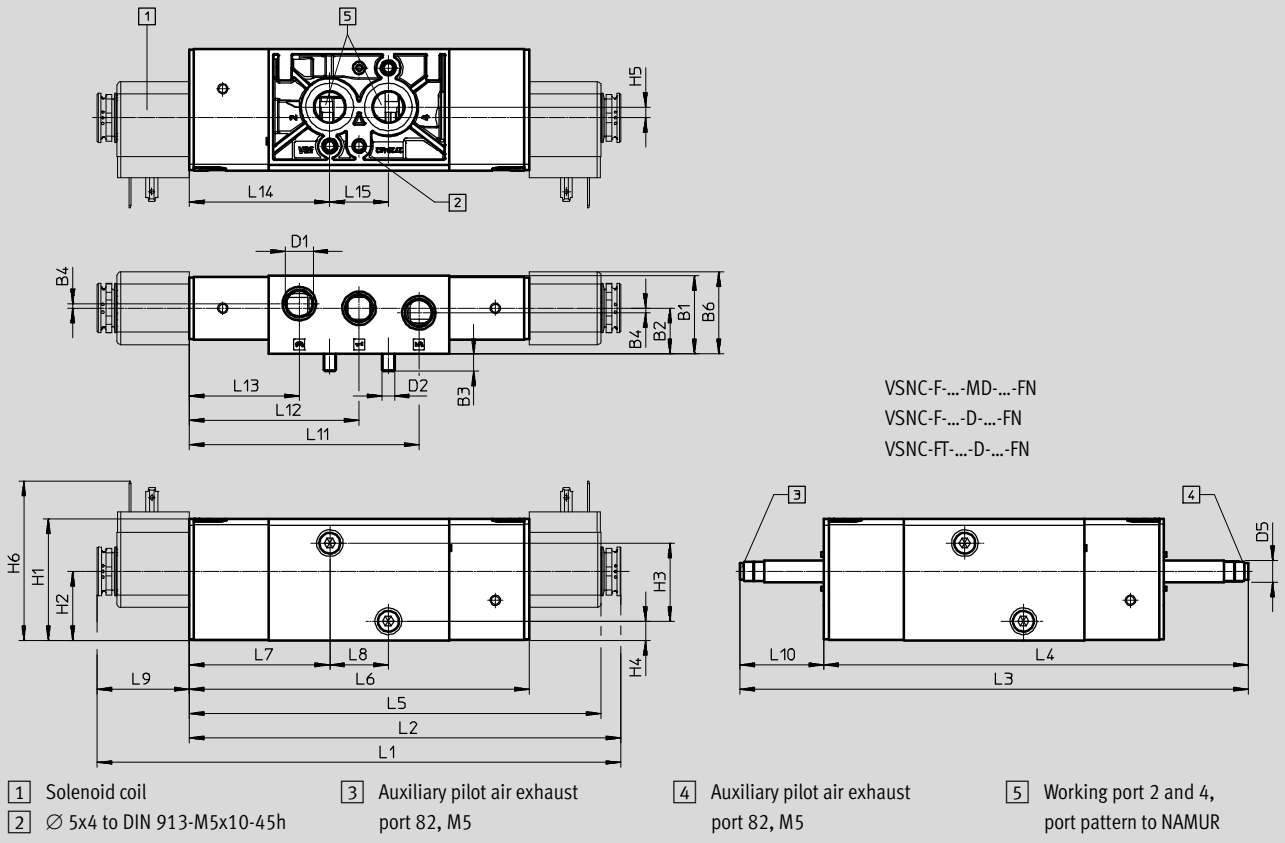
Solenoid valves VSNC

Technical data – 5/2-way, double solenoid



Dimensions

Download CAD data → www.festo.com

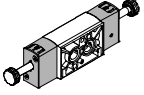
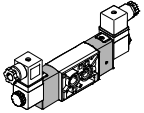


| Type | B1 | B2 | B3 | B4 | B6 | D1 | D2 | D5 Ø | H1 | H2 | H3 | H4 | H5 | H6 | L1 |
|-----------------------|------|------|-----|-----|------|---------|----|---------|------|------|----|-----|-----|----|----|
| VSNC-F-P53C-MD-G14-FN | 31.8 | 18.6 | 7.3 | 1.9 | 33.4 | G 1/4 | M5 | 9 | 49.8 | 28.2 | 32 | 7.8 | 4.4 | - | - |
| VSNC-F-P53U-MD-G14-FN | | | | | | | | | | | | | | | |
| VSNC-F-P53E-MD-G14-FN | | | | | | NPT 1/4 | | | | | | | | | |
| VSNC-F-P53C-MD-N14-FN | | | | | | | | | | | | | | | |
| VSNC-F-P53U-MD-N14-FN | | | | | | | | | | | | | | | |
| VSNC-F-P53E-MD-N14-FN | | | | | | | | | | | | | | | |

| Type | L2 | L3 | L4 | L5 | L6 | L7 | L8 | L9 | L10 | L11 | L12 | L13 | L14 | L15 |
|-----------------------|----|-----|-------|----|-------|------|----|----|------|------|------|------|------|-----|
| VSNC-F-P53C-MD-G14-FN | - | 208 | 173.6 | - | 139.2 | 57.6 | 24 | - | 34.4 | 94.1 | 69.6 | 45.1 | 57.6 | 24 |
| VSNC-F-P53U-MD-G14-FN | | | | | | | | | | | | | | |
| VSNC-F-P53E-MD-G14-FN | | | | | | | | | | | | | | |
| VSNC-F-P53C-MD-N14-FN | | | | | | | | | | | | | | |
| VSNC-F-P53U-MD-N14-FN | | | | | | | | | | | | | | |
| VSNC-F-P53E-MD-N14-FN | | | | | | | | | | | | | | |

Solenoid valves VSNC

Technical data – 5/2-way, double solenoid

| Ordering data – Valves | | |
|---|----------|--------------------------|
| Directional control valve without solenoid coil | | |
|  | Part No. | Type |
| | 577278 | VSNC-FT-B52-D-G14-FN |
| | 577280 | VSNC-FT-B52-D-N14-FN |
| Directional control valve with solenoid coil | | |
|  | 577298 | VSNC-FT-B52-D-G14-FN-1A1 |

Solenoid valves VSNC

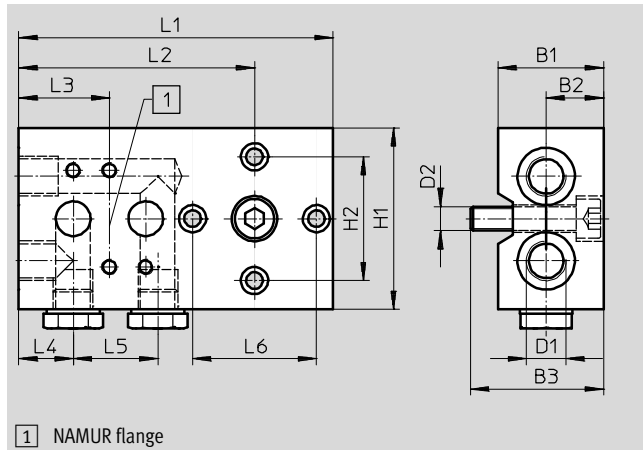
Accessories



Connection kit

Mounting position: Any
 Type of mounting: With through-hole
 Operating pressure: 0 ... 10 bar
 Operating medium: Compressed air to ISO 8573-1:2010 [7:-:-]
 Degree of protection IP65

Materials: Wrought aluminium alloy
 Seals: NBR
 Contains paint-wetting impairment substances, RoHS-compliant

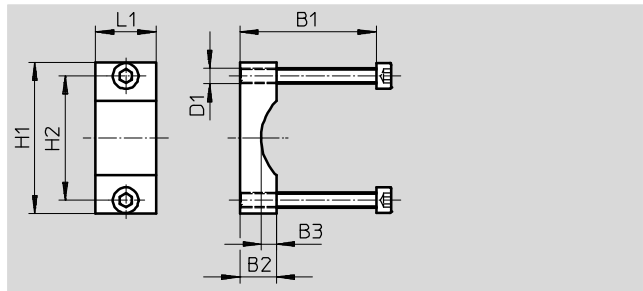
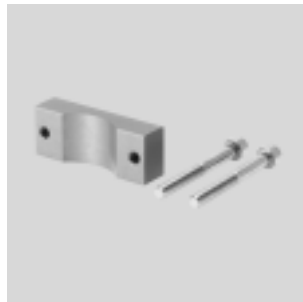


| Dimensions [mm] and ordering data | | | | | | | | | | | | | | Part No. | Type |
|-----------------------------------|----|----|-------------------------------|----|----|----|-----|----|----|----|----|----|-------------------|----------|---------------|
| B1 | B2 | B3 | D1 | D2 | H1 | H2 | L1 | L2 | L3 | L4 | L5 | L6 | CRC ¹⁾ | Part No. | Type |
| 35 | 19 | 44 | G ³ / ₄ | M8 | 60 | 41 | 104 | 78 | 30 | 18 | 28 | 41 | 4 | 563396 | VABS-S7-S-G14 |

1) Corrosion resistance class CRC 4 to Festo standard FN 940070
 Particularly high corrosion stress. Outdoor exposure under extreme corrosive conditions. Parts exposed to aggressive media, for instance in the chemical or food industries. These applications may need to be supported by special tests (→ also FN 940082) using appropriate media.

Mounting bracket

Materials: Bracket:
 Wrought aluminium alloy
 Contains paint-wetting impairment substances, RoHS-compliant



| Dimensions [mm] and ordering data | | | | | | | | Part No. | Type |
|-----------------------------------|----|----|----|----|----|----|-------------------|----------|-----------|
| B1 | B2 | B3 | D1 | H1 | H2 | L1 | CRC ¹⁾ | Part No. | Type |
| 45/65 | 12 | 5 | M5 | 50 | 41 | 20 | 3 | 563403 | VAME-S7-Y |

1) Corrosion resistance class CRC 3 to Festo standard FN 940070
 High corrosion stress. Outdoor exposure under moderate corrosive conditions. External visible parts with primarily functional requirements for the surface and which are in direct contact with a normal industrial environment.

Solenoid valves VSNC

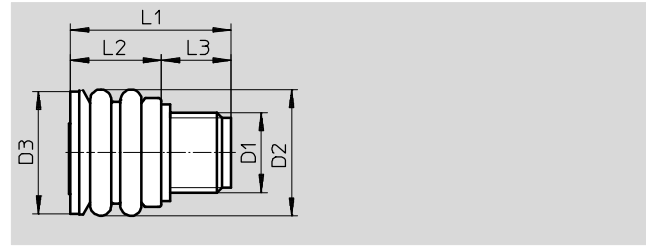
Accessories

Exhaust protection

Materials:

EPDM, PA

Contains paint-wetting impairment substances, RoHS-compliant



| Dimensions [mm] and ordering data | | | | | | | | |
|-----------------------------------|----|------|------|----|------|-------------------|----------|----------------|
| D1 | D2 | D3 | L1 | L2 | L3 | CRC ¹⁾ | Part No. | Type |
| G1/4, 1/4NPT | 21 | 20.5 | 26.5 | 15 | 11.5 | 3 | 563400 | VABD-D3-SN-G14 |

1) Corrosion resistance class CRC 3 to Festo standard FN 940070

High corrosion stress. Outdoor exposure under moderate corrosive conditions. External visible parts with primarily functional requirements for the surface and which are in direct contact with a normal industrial environment.

| Ordering data – Solenoid coil | | | |
|---|---|---------------------------------|---------------|
| | Coil characteristics | Part No. | Type |
| Electrical port pattern to industrial standard type B | | Technical data → Internet: vacf | |
| | 12 V DC; 3.4 W | 8030801 | VACF-B-B2-5 |
| | 24 V DC; 3.3 W | 8030802 | VACF-B-B2-1 |
| | 48 V DC; 3.4 W | 8030803 | VACF-B-B2-7 |
| | 24 V AC; 50/60 Hz, pick-up power rating 3.9 VA, holding power 2.6 VA | 8030804 | VACF-B-B2-1A |
| | 48 V AC; 50/60 Hz, pick-up power rating 3.9 VA, holding power 2.7 VA | 8030805 | VACF-B-B2-7A |
| | 110/120 V AC; 50/60 Hz, pick-up power rating 4.4 VA, holding power 3.3 VA | 8030806 | VACF-B-B2-16B |
| | 230/240 V AC; 50/60 Hz, pick-up power rating 5.8 VA, holding power 4.6 VA | 8030808 | VACF-B-B2-3W |
| Electrical port pattern to DIN EN 175301-803 type A | | | |
| | 12 V DC; 2.8 W | 8030821 | VACF-A-A1-5 |
| | 24 V DC; 2.6 W | ★ 8030822 | VACF-A-A1-1 |
| | 48 V DC; 2.8 W | 8030823 | VACF-A-A1-7 |
| | 24 V AC; 50/60 Hz, pick-up power rating 2.5 VA, holding power 1.7 VA | 8030824 | VACF-A-A1-1A |
| | 48 V AC; 50/60 Hz, pick-up power rating 2.5 VA, holding power 1.7 VA | 8030825 | VACF-A-A1-7A |
| | 110/120 V AC; 50/60 Hz, pick-up power rating 2.7 VA, holding power 1.9 VA | 8030826 | VACF-A-A1-16B |
| | 230/240 V AC; 50/60 Hz, pick-up power rating 3.9 VA, holding power 2.8 VA | 8030828 | VACF-A-A1-3W |

Festo core product range

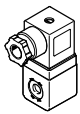
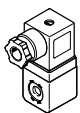
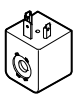
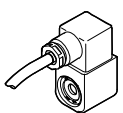
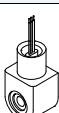
★ Generally ready for shipping ex works in 24 hours

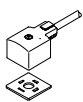
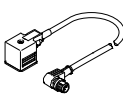
☆ Generally ready for shipping ex works in 5 days

Solenoid valves VSNC

Accessories

FESTO

| Ordering data – Solenoid coil | | | | | |
|--|---|----------------------|--|-----------|-------------------------|
| | | Coil characteristics | | Part No. | Type |
| Type of ignition protection: intrinsically safe Ex ia Technical data → Internet: vacn | | | | | |
|  | 28V | | | 8029139 | VACN-N-A1-1-EX-4-A |
| Type of ignition protection: non-sparking Ex nA | | | | | |
|  | 24 V DC; 2.1 W | | | 8029136 | VACN-N-A1-1-EX2-N |
| | 110 V AC; 50 Hz, pick-up power rating 6.9 VA, holding power 4.1 VA | | | 8029137 | VACN-N-A1-16B-EX2-N |
| | 110 V AC; 60 Hz, pick-up power rating 5.4 VA, holding power 3.2 VA | | | | |
| | 230 V AC; 50 Hz, pick-up power rating 6.9 VA, holding power 4.1 VA | | | 8029138 | VACN-N-A1-3A-EX2-N |
| | 230 V AC; 60 Hz, pick-up power rating 5.4 VA, holding power 3.3 VA | | | | |
| Degree of protection IP65 with socket | | | | | |
|  | 24 V DC; 0.7 W | | | ★ 8029144 | VACN-N-A1-1 |
| | 110 V AC; 50 Hz, pick-up power rating 5.2 VA, holding power 3.1 VA | | | 8029134 | VACN-N-A1-16B |
| | 110 V AC; 60 Hz, pick-up power rating 4.2 VA, holding power 2.5 VA | | | | |
| | 230 V AC; 50 Hz, pick-up power rating 6.2 VA, holding power 3.7 VA | | | 8029135 | VACN-N-A1-3A |
| | 230 V AC; 60 Hz, pick-up power rating 4.9 VA, holding power 2.9 VA | | | | |
| Type of ignition protection: encapsulated Ex me | | | | | |
|  | 230 V AC; 50/60 Hz, power 2.1 VA | | | 8029141 | VACN-N-K1-3A-EX4-M |
| | 110 V AC; 50/60 Hz, power 2.4 VA | | | 8029142 | VACN-N-K1-16B-EX4-M |
| | 24 V DC; 2.6 W | | | 8029143 | VACN-N-K1-1-EX4-M |
| Type of ignition protection: encapsulated AEx m, Class 1, Div 1 to NEC 500 | | | | | |
|  | 230 V AC; 50 Hz, pick-up power rating 11.5 VA, holding power 8.0 VA | | | 8029140 | VACN-N-K11-3A-0.5-U4-M |
| | 120 V AC; 60 Hz, pick-up power rating 10.0 VA, holding power 6.8 VA | | | 8029145 | VACN-N-K11-16B-0.5-U4-M |
| | 24 V DC; 4.6 W | | | 8029146 | VACN-N-K11-1-0.5-U4-M |


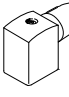






| Ordering data | | | | | | |
|---|--|---|-------------------------------|------------------|-------------------------|-----------------------|
| | | Description | Nominal operating voltage [V] | Cable length [m] | Part No. | Type |
| Connecting cable Technical data → Internet: kmc | | | | | | |
|  | For valves with D and N1 solenoid coils | 24 DC | • Signal status display | 2.5 | 30931 | KMC-1-24 DC-2,5-LED |
| 5 | | | | 30933 | KMC-1-24 DC-5-LED | |
| 230 AC | | – | 2.5 | 30932 | KMC-1-230 AC-2,5 | |
| | | | 5 | 30934 | KMC-1-230 AC-5 | |
| | For valves with F solenoid coils | 24 DC | • Signal status display | 2.5 | 30935 | KMF-1-24DC-2,5-LED |
| Connecting cable Technical data → Internet: nebv | | | | | | |
|  | For valves with D and N1 solenoid coils. Angled socket, connection diagram type A, EN 175301-803 | 230 AC/DC | – | 0.6 | 3579466 | NEBV-A1W3-K-0,6-N-LE3 |
| 0.3 | | | | 3579461 | NEBV-A1W3-K-0,3-N-M12W3 | |
| 24 AC/DC | | • Signal status display • Protective circuit | 0.6 | 3579462 | NEBV-A1W3-K-0,6-N-M12W3 | |
| | | | 0.3 | 3679771 | NEBV-A1W3-P-0,3-N-M12W3 | |
| | | | 0.6 | 3679772 | NEBV-A1W3-P-0,6-N-M12W3 | |
| | | | 0.6 | 3679776 | NEBV-A1W3-P-K-0,6-LE3 | |

Festo core product range

- ★ Generally ready for shipping ex works in 24 hours
- ☆ Generally ready for shipping ex works in 5 days

Solenoid valves VSNC

Accessories

| Ordering data | | | |
|--|---|--|------------------------|
| | Description | Part No. | Type |
| Plug socket Technical data → Internet: mssd | | | |
|  | 3-pin, angled socket, square design connection pattern type B, to industrial standard 11 mm | 539710 | MSSD-F-M16 |
| | 3-pin, angled socket, square design connection pattern type A, to DIN EN 175301-803, type A | 539709 | MSSD-C-M16 |
|  | 3-pin, IP67 socket to IEC 60529, type B | 192746 | MSSD-F-S-M16 |
| | 4-pin, IP67 socket to IEC 60529, type A | 192748 | MSSD-C-S-M16 |
|  | 3-pin, angled socket, square design, IP65 to DIN EN 175301-803, type A | 34583 | MSSD-C |
| Push-in fittings QS Technical data → Internet: qs | | | |
|  | G male thread with internal hex | 186108 | QS-G1/4-6-I |
| | | 186110 | QS-G1/4-8-I |
| | | 186112 | QS-G1/4-10-I |
| | NPT male thread with internal hex | 572320 | QB-1/4-1/4-I-U |
| | | 572321 | QB-1/4-5/16-I-U |
| | | 572322 | QB-1/4-3/8-I-U |
| Silencer U Technical data → Internet: u | | | |
|  | G male thread, polymer design | 534223 | U-1/4-20 |
| | | 2316 | U-1/4 |
| | G male thread, die-cast metal design | 6842 | U-1/4-B |
| | | NPT male thread, die-cast metal design | 12639 |
| Illuminating seal Technical data → Internet: mc-ld | | | |
|  | For F solenoid coils | 19143 | MF-LD-12-24 DC |
| | | 19144 | MF-LD-230 AC |
|  | For valves with D and N1 solenoid coils | 19145 | MC-LD-12-24 DC |
| | | 19146 | MC-LD-230 AC |
| Cover cap | | | |
|  | For valves | 8028240 | VAMC-B10-20-CH2 |