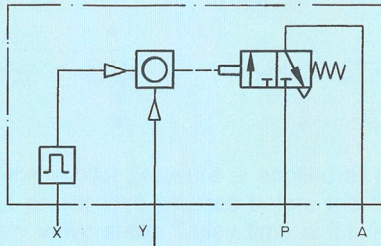


Long Delay Timer

with Digital Operation

Type PZVT-999-SEC-B
PZVT-99 999-MIN-B



These digital timers combine a pneumatic time-pulse generator and an adjustable counter with stationary preselect in one compact unit. This makes it possible to set precise time delays from 1 to 999 seconds or from 1 to 99999 minutes.

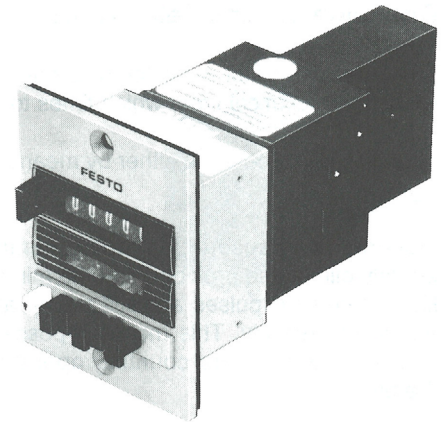
The elapsed seconds or minutes are displayed in the counter window (additive mode of counting). The preselected time is continually visible in the preselect window.

When the preselected time has been reached, and provided that there is compressed air present at P, an output signal is generated at A. The output signal remains until the timer is reset by a signal at Y.

Accessories:

Protective cover with knob,
Type PZ-SK-2, Part No. 14663
Protective cover with lock,
Type PZ-SS-2, Part No. 13966
See Page 4 for protective covers.

P = Supply X = Pilot
A = Outlet Y = Reset signal

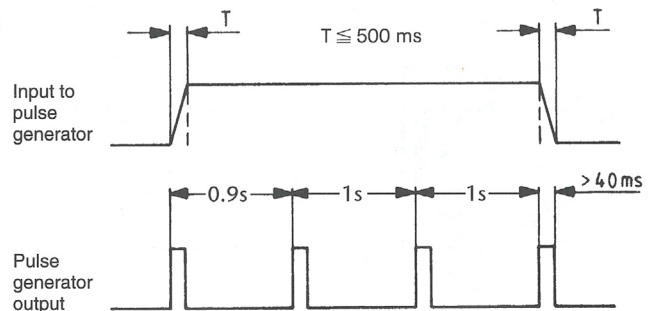


PZVT-99 999-MIN-B

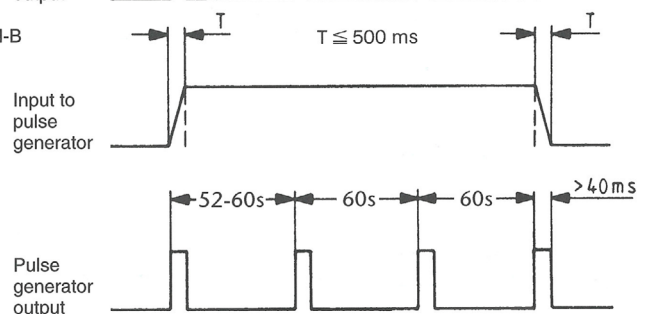
Times are preselected by pressing the white locking button while keying in the desired value. The preselected time setting is retained when the timer is reset. The setting can be changed while the timer is functioning.

Normal sequence of operation

Type PZVT-999-SEC-B



Type PZVT-99 999-MIN-B



Order Number	Part No./Type	13988 PZVT-999-SEC-B	13989 PZVT-99 999-MIN-B
Medium		Compressed air (filtered, unlubricated)	
Design		Pneumatic adjustable timer with time-pulse generator	
Mounting		Front panel mounting	
Connection	Working Ports	M5	
	Pilot Port	M5	
Display		3-digits, digit size is 0.16 in / 4 mm	5-digits, digit size is 0.16 in / 4 mm
Supply Pressure Range*		30 to 90 psi / 2 to 6 bar	
Pilot Pressure Range		30 to 90 psi / 2 to 6 bar	
Adjustable Time Delay		1 to 999 s (max. 16.6 min)	1 to 99 999 min (max. 69.4 days)
Reset Time		180 ms	
Material		Housing: Plastic	
Weight		0.498 lb / 0.226 kg	0.507 lb / 0.230 kg

* 32 to 140°F / 0 to 60°C

Pneumatic Counters and Timers

Operation and Dimensions, Timers

Operation of Long Delay Timers

The pulse generator is started by a pneumatic signal at X. A pneumatic cylinder winds a mechanical timer which times to 1 second or 1 minute and resets itself.

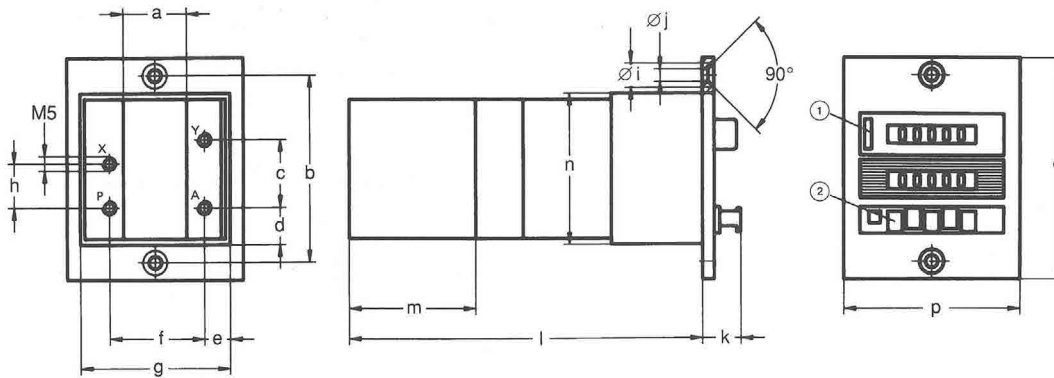
The device can be reset either by means of the reset pushbutton or a pneumatic signal at port Y.

Malfunctions caused by slipping number rollers or halfdigit advances are entirely eliminated provided that the minimum reset time of 180 ms is observed. Even if counter pulses are still preset at "Z", the timer can be reset to "zero" easily and reliably. This makes it possible to achieve a new integrated pulse interrupt control. The counting operation can be interrupted by exhausting the pilot.

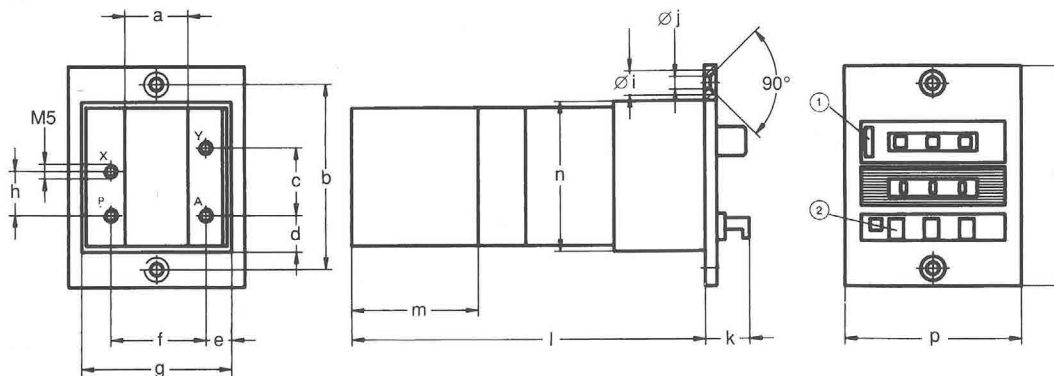
Note:

The pulse generator is subject to an operation-related time variation of max. 15% in the 1st second and 2% in each additional second.

Type PZVT-99 999-MIN-B



Type PZVT-999-SEC-B



Dimensions

a	0.85 in / 21.5 mm	i	0.33 in / 8.3 mm
b	2.48 in / 63 mm	j	0.17 in / 4.3 mm
c	0.90 in / 23 mm	k	0.51 in / 13 mm
d	0.49 in / 12.5 mm	l	4.80 in / 122 mm
e	0.35 in / 8.8 mm	m	1.69 in / 43 mm
f	1.27 in / 32.3 mm	n	2.01 in / 51 mm
g	2.01 in / 51 mm	o	2.95 in / 75 mm
h	0.59 in / 15 mm	p	2.36 in / 60 mm

- ① Reset button
- ② Preselector buttons

P = Supply
A = Outlet
X = Pilot
Y = Reset signal