

Solenoid valves VZWM-L, NPT



# Solenoid valves VZWM-L, NPT

Key features and type codes

## General

- Indirectly actuated diaphragm valve
- Process valve connection  
N14 ... N2
- Flow rate  
1,400 ... 31,000 l/min
- Available in brass or stainless steel casting
- Wide range of coils

VZWM – L – M22C – N14 – F4 –

Type	
VZWM	Solenoid valve, process directional control valve

Design	
L	In-line valve

Valve function	
M22C	2/2-way valve, normally closed

Process valve connection	
N14	NPT1/4
N38	NPT3/8
N12	NPT1/2
N34	NPT3/4
N1	NPT1
N114	NPT1 1/4
N112	NPT1 1/2
N2	NPT2

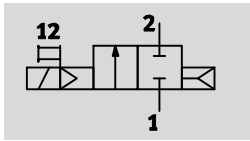
Electrical connection	
F4	MD-2-With armature tube for solenoid coil MD-2- ... -PA
F5	MH-2-With armature tube for solenoid coil MH-2- ... -PA


Housing material	
R1	Stainless steel casting
	Brass

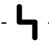
# Solenoid valves VZWM-L, NPT

Technical data

Function



-  - Flow rate  
1,400 ... 31,000 l/min

-  - Voltage  
24 V DC  
110, 230 V AC



General technical data										
Process valve connection		NPT1/4	NPT3/8	NPT1/2	NPT3/4	NPT1	NPT1 1/4	NPT1 1/2	NPT2	
Nominal size (DN)	[mm]	13.5	13.5	13.5	27.5	27.5	40	40	50	
Valve function		2/2-way, single solenoid								
Design		Diaphragm valve								
Sealing principle		Soft								
Actuation type		Electric								
Reset method		Pneumatic spring								
Type of control		Piloted								
Direction of flow		Non-reversible								
Exhaust function		No flow control								
Manual override		None								
Type of mounting		In-line installation								
Mounting position		Preferably vertical								
Standard nominal flow rate	[l/min]	1,400	2,100	2,400	10,000	11,700	24,000	26,400	31,000	
Flow rate Kv	[m <sup>3</sup> /h]	1.6	2	2.4	8.5	10.7	21.3	27.4	39	
c value	[l/sbar]	6	8.8	9.8	39	41	75	82	110	
b value		0.3	0.35	0.37	0.5	0.5	0.6	0.67	0.68	
Pressure differential	[bar]	0.5	0.5	0.5	0.5	0.5	0.7	0.7	0.7	
Materials	Housing	Brass or stainless steel casting								
	Diaphragm	Nitrile rubber								
	Armature tube	High-alloy steel								
Note on materials		Contains PWIS (paint-wetting impairment substances)								
Max. tightening torque	Connecting thread	[Nm]	35	60	105	200	350	450	540	620
	Cover screw	[Nm]	20	20	20	30	30	30	30	30
	Coil mounting	[Nm]	2	2	2	2	2	2	2	2

# Solenoid valves VZWM-L, NPT



Technical data

Operating and environmental conditions											
Process valve connection			NPT1/4	NPT3/8	NPT1/2	NPT3/4	NPT1	NPT1 1/4	NPT1 1/2	NPT2	
Operating medium			Compressed air in accordance with ISO 8573-1:2010 [7:4:4]								
			Neutral liquids								
			Inert gases								
			Water								
Ambient temperature <sup>1)</sup>		[°C]	-10 ... +60								
Operating pressure, valve	Gases	[bar]	0.5 ... 10				0.7 ... 10				
	Fluids	[bar]	0.5 ... 6				0.7 ... 6				
Medium pressure	Gases	[bar]	0.5 ... 10				0.7 ... 10				
	Fluids	[bar]	0.5 ... 6				0.7 ... 6				
Temperature of medium	Gases	[°C]	-10 ... +60								
	Fluids	[°C]	5 ... 50								
Max. viscosity		[mm <sup>2</sup> /s]	22								
Corrosion resistance class CRC <sup>2)</sup>	Brass		1								
	Stainless steel casting		3								

1) Note ambient temperature of solenoid coils

2) Corrosion resistance class 1 according to Festo standard 940 070

Components subject to low corrosion stress. Transport and storage protection. Parts that do not have primarily decorative surface requirements, e.g. in internal areas that are not visible or behind covers.

Corrosion resistance class 3 according to Festo standard 940 070

Components subject to high corrosion stress. Externally visible parts with primarily decorative surface requirements which are in direct contact with a normal industrial environment or media such as solvents and cleaning agents.

Valve switching times										
Process valve connection			NPT1/4	NPT3/8	NPT1/2	NPT3/4	NPT1	NPT1 1/4	NPT1 1/2	NPT2
Gases										
Switching time	Off	[ms]	10	10	10	12	12	20	20	21
	On	[ms]	8	8	8	15	15	26	26	62
Liquids										
Switching time	Off	[ms]	200	210	220	930	930	1,900	2,000	2,800
	On	[ms]	100	110	110	400	400	1,400	1,400	2,100
Switching time of variant R1	Off	[ms]	210	190	200	950	950	1,900	2,000	2,800
	On	[ms]	80	110	110	420	300	1,400	1,400	2,100

Electrical data											
Process valve connection			NPT1/4	NPT3/8	NPT1/2	NPT3/4	NPT1	NPT1 1/4	NPT1 1/2	NPT2	
Electrical connection			F4, with armature tube for solenoid coil MD-2- ... -PA, must be ordered separately				MH-2-F5, with armature tube for solenoid coil MH-2- ... -PA, must be ordered separately				
Operating voltage	DC voltage	[V DC]	24								
	AC voltage	[V AC]	110/230 (50 ... 60 Hz)								
Coil characteristics	DC voltage	[W]	6.8				7.9				
	AC voltage	[VA]	Pull: 14.5 Hold: 10.5				14				
Protection class to EN 60529			IP65 (with plug socket)								

# Solenoid valves VZWM-L, NPT

Technical data

Weight [g]			
Brass housing		Stainless steel casting housing	
VZWM-L-M22C-N14-F4	500	VZWM-L-M22C-N14-F5-R1	400
VZWM-L-M22C-N38-F4	450	VZWM-L-M22C-N38-F5-R1	400
VZWM-L-M22C-N12-F4	415	VZWM-L-M22C-N12-F5-R1	400
VZWM-L-M22C-N34-F4	1,220	VZWM-L-M22C-N34-F5-R1	1,200
VZWM-L-M22C-N1-F4	1,200	VZWM-L-M22C-N1-F5-R1	1,100
VZWM-L-M22C-N114-F5	2,700	VZWM-L-M22C-N114-F5-R1	2,600
VZWM-L-M22C-N112-F5	2,510	VZWM-L-M22C-N112-F5-R1	2,500
VZWM-L-M22C-N2-F5	4,000	VZWM-L-M22C-N2-F5-R1	3,700

# Solenoid valves VZWM-L, NPT

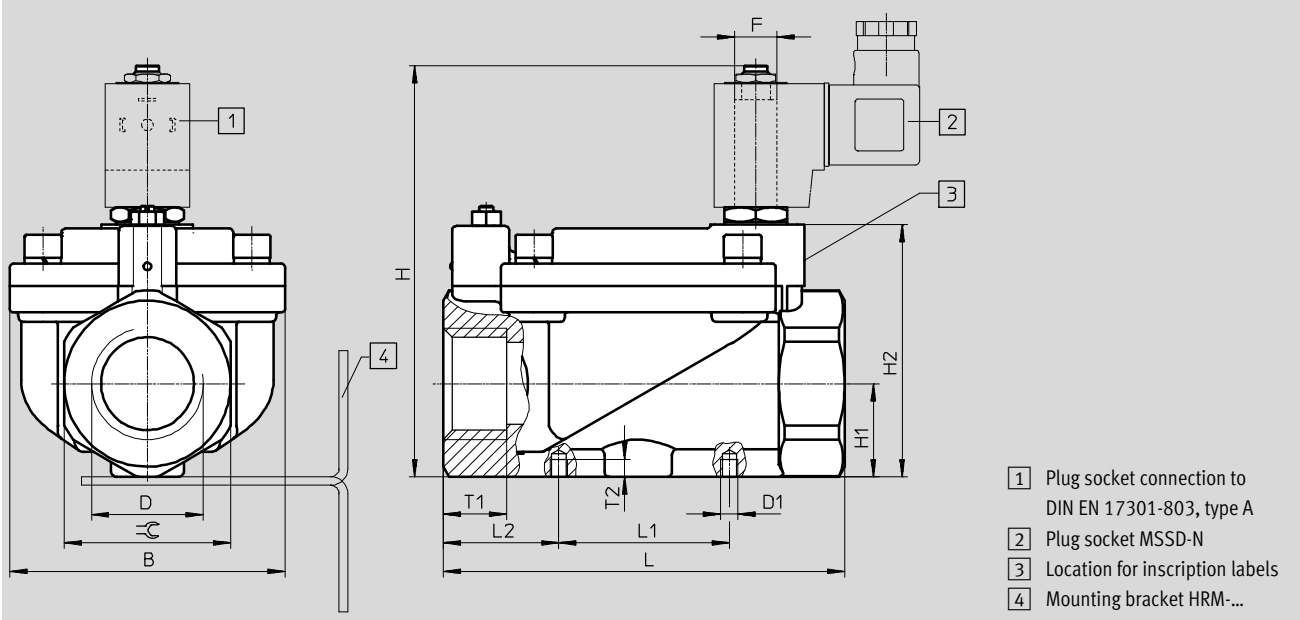
Technical data

FESTO

## Dimensions

2/2-way valve

Download CAD data → [www.festo.com](http://www.festo.com)



- 1 Plug socket connection to DIN EN 17301-803, type A
- 2 Plug socket MSSD-N
- 3 Location for inscription labels
- 4 Mounting bracket HRM-...

Type	B ±1.5	D	D1	H ±2	H1 ±1.5	H2 ±1	L ±2	L1 ±1.5	L2	F	T1	T2 ±0.5	☞
VZWM-L-M22C-N14-F4	48	NPT1/4	M4	85.5	15	49	67	25	21	F5	12	4	27
VZWM-L-M22C-N38-F4	48	NPT3/8	M4	85.5	15	49	67	25	21	F5	12	4	27
VZWM-L-M22C-N12-F4	48	NPT1/2	M4	85	15	49	67	25	21	F5	12	4	27
VZWM-L-M22C-N34-F4	70	NPT3/4	M6	107	24.2	70.5	96	40	28	F5	16	6	41
VZWM-L-M22C-N1-F4	70	NPT1	M6	107	24.2	70.5	96	40	28	F5	16	6	41
VZWM-L-M22C-N114-F5	96	NPT1 1/4	M6	143.5	32.5	87	140	59.5	40.25	F5	22	6	58
VZWM-L-M22C-N112-F5	96	NPT1 1/2	M6	143.5	32.5	87	140	59.5	40.25	F5	22	6	58
VZWM-L-M22C-N2-F5	112	NPT2	M6	159	38.5	103.5	168	59.5	54.25	F5	25	6	70
VZWM-L-M22C-N14-F5-R1	44	NPT1/4	M4	106	15.6	51	67	25	21	F4	-	4	27
VZWM-L-M22C-N38-F5-R1	44	NPT3/8	M4	106	15.6	51	67	25	21	F4	-	4	27
VZWM-L-M22C-N12-F5-R1	44	NPT1/2	M4	106	15.6	51	67	25	21	F4	-	4	27
VZWM-L-M22C-N34-F5-R1	70	NPT3/4	M6	126	24.2	70	96	40	28	F4	-	6	41
VZWM-L-M22C-N1-F5-R1	70	NPT1	M6	126	24.2	70	96	40	28	F4	-	6	41
VZWM-L-M22C-N114-F5-R1	96	NPT1 1/4	M6	145	34	89.5	140	59.5	40.25	F5	-	6	58
VZWM-L-M22C-N112-F5-R1	96	NPT1 1/2	M6	145	34	89.5	140	59.5	40.25	F5	-	6	58
VZWM-L-M22C-N2-F5-R1	112	NPT2	M6	159	38.5	104	168	59.5	40.25	F5	-	6	70

## Ordering data

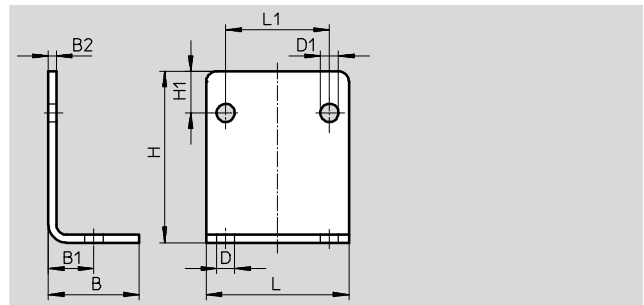
Process valve connection	Brass housing		Stainless steel casting housing	
	Part No.	Type	Part No.	Type
NPT1/4	546 154	VZWM-L-M22C-N14-F4	546 170	VZWM-L-M22C-N14-F5-R1
NPT3/8	546 155	VZWM-L-M22C-N38-F4	546 171	VZWM-L-M22C-N38-F5-R1
NPT1/2	546 156	VZWM-L-M22C-N12-F4	546 172	VZWM-L-M22C-N12-F5-R1
NPT3/4	546 157	VZWM-L-M22C-N34-F4	546 173	VZWM-L-M22C-N34-F5-R1
NPT1	546 158	VZWM-L-M22C-N1-F4	546 174	VZWM-L-M22C-N1-F5-R1
NPT1 1/4	546 159	VZWM-L-M22C-N114-F5	546 175	VZWM-L-M22C-N114-F5-R1
NPT1/2	546 160	VZWM-L-M22C-N112-F5	546 176	VZWM-L-M22C-N112-F5-R1
NPT2	546 161	VZWM-L-M22C-N2-F5	546 177	VZWM-L-M22C-N2-F5-R1

# Solenoid valves VZWM-L

Accessories

## Mounting bracket HRM

Material:  
Galvanised steel



Dimensions and ordering data											
B	B1	B2	D	D1	H	H1	L	L1	Weight [g]	Part No.	Type
25	12.5	2	6	5	37	10	40	25	39	9 769	HRM-1
35	17.5	3	7	7	66	16	55	40	130	9 770	HRM-2
47	23.5	3	9	7	87	23	75	59.5	246	9 771	HRM-3

Ordering data – Solenoid coils				Technical data → Internet: solenoid coil	
	Voltage	Part No.	Type		
Solenoid coil for VZWM- ... -F4- ... <sup>1)</sup>					
	24 V DC	549 903	MD-2-24VDC-PA		
	110 V AC, 50 ... 60 Hz	549 904	MD-2-110VAC-PA		
	230 V AC, 50 ... 60 Hz	549 905	MD-2-230VAC-PA		
Solenoid coil for VZWM- ... -F5- ... <sup>1)</sup>					
	24 V DC	549 906	MH-2-24VDC-PA		
	110 V AC, 50 ... 60 Hz	549 907	MH-2-110VAC-PA		
	230 V AC, 50 ... 60 Hz	549 908	MH-2-230VAC-PA		

1) Ambient temperature -20 ... 50 °C

Ordering data – Plug socket			Technical data → Internet: mssd-n	
	Part No.	Type		
	550 067	MSSD-N	3-pin, square design MSF	

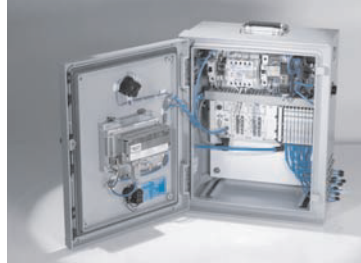
## Product Range and Company Overview

### A Complete Suite and Company Overview

Our experienced engineers provide complete support at every stage of your development process, including: conceptualization, analysis, engineering, design, assembly, documentation, validation, and production.



**Custom Automation Components**  
Complete custom engineered solutions



**Custom Control Cabinets**  
Comprehensive engineering support and on-site services



**Complete Systems**  
Shipment, stocking and storage services

### The Broadest Range of Automation Components

With a comprehensive line of more than 30,000 automation components, Festo is capable of solving the most complex automation requirements.



**Electromechanical**  
Electromechanical actuators, motors, controllers & drivers



**Pneumatics**  
Pneumatic linear and rotary actuators, valves, and air supply



**PLCs and I/O Devices**  
PLC's, operator interfaces, sensors and I/O devices

### Supporting Advanced Automation... As No One Else Can!

Festo is a leading global manufacturer of pneumatic and electromechanical systems, components and controls for industrial automation, with more than 16,000 employees in 60 national headquarters serving more than 180 countries. For more than 80 years, Festo has continuously elevated the state of manufacturing with innovations and optimized motion control solutions that deliver higher performing, more profitable automated manufacturing and processing equipment. Our dedication to the advancement of automation extends beyond technology to the education and development of current and future automation and robotics designers with simulation tools, teaching programs, and on-site services.

### Quality Assurance, ISO 9001 and ISO 14001 Certifications

Festo Corporation is committed to supply all Festo products and services that will meet or exceed our customers' requirements in product quality, delivery, customer service and satisfaction.

To meet this commitment, we strive to ensure a consistent, integrated, and systematic approach to management that will meet or exceed the requirements of the ISO 9001 standard for Quality Management and the ISO 14001 standard for Environmental Management.



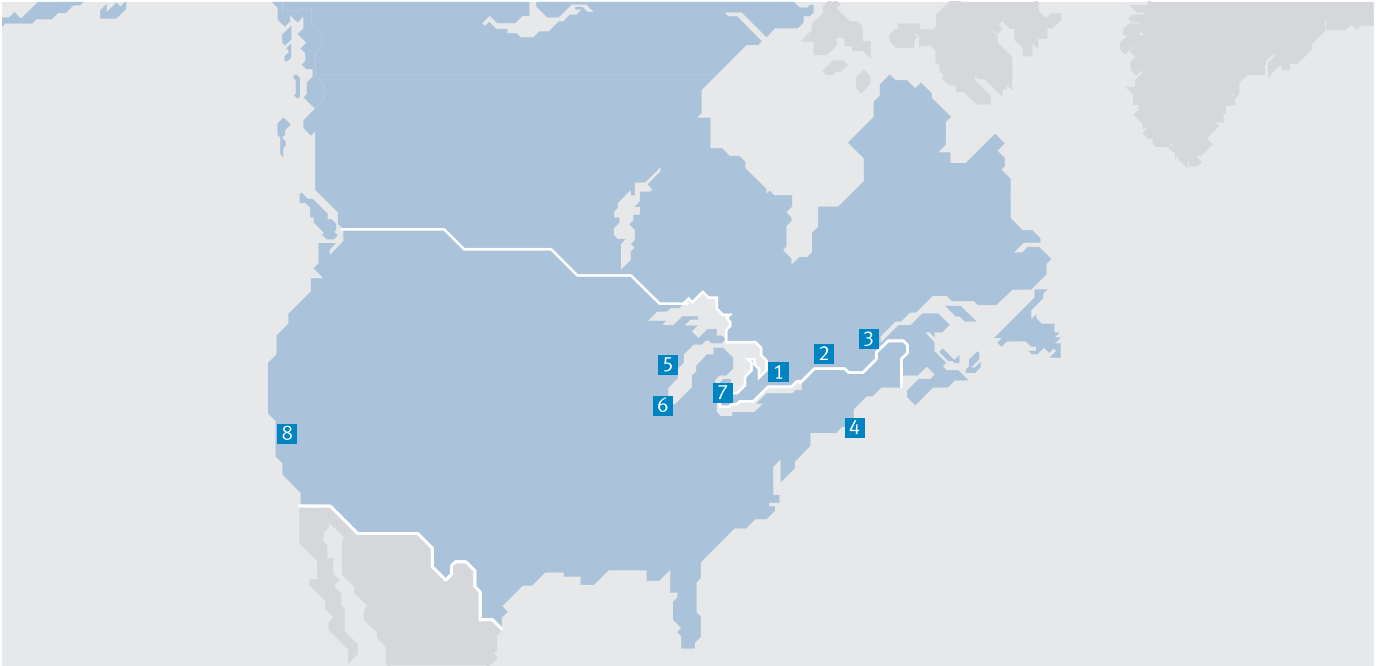
© Copyright 2013, Festo Corporation. While every effort is made to ensure that all dimensions and specifications are correct, Festo cannot guarantee that publications are completely free of any error, in particular typing or printing errors. Accordingly, Festo cannot be held responsible for the same. For Liability and Warranty conditions, refer to our "Terms and Conditions of Sale", available from your local Festo office. All rights reserved. No part of this publication may be reproduced, distributed, or transmitted in any form or by any means, electronic, mechanical, photocopying or otherwise, without the prior written permission of Festo. All technical data subject to change according to technical update.



Printed on recycled paper at New Horizon Graphic, Inc., FSC certified as an environmental friendly printing plant.



# Festo North America



**1 Festo Canada  
Headquarters  
Festo Inc.**  
5300 Explorer Drive  
Mississauga, ON  
L4W 5G4

**2 Montréal**  
5600, Trans-Canada  
Pointe-Claire, QC  
H9R 1B6

**3 Québec City**  
2930, rue Watt#117  
Québec, QC  
G1X 4G3



**4 Festo United States  
Headquarters  
Festo Corporation**  
395 Moreland Road  
Hauppauge, NY  
11788

**5 Appleton**  
North 922 Tower View Drive, Suite N  
Greenville, WI  
54942

**7 Detroit**  
1441 West Long Lake Road  
Troy, MI  
48098

**6 Chicago**  
85 W Algonquin - Suite 340  
Arlington Heights, IL  
60005

**8 Silicon Valley**  
4935 Southfront Road, Suite F  
Livermore, CA  
94550

## Festo Regional Contact Center

### Canadian Customers

Commercial Support:  
Tel: 1 877 GO FESTO (1 877 463 3786)  
Fax: 1 877 FX FESTO (1 877 393 3786)  
Email: festo.canada@ca.festo.com

Technical Support:  
Tel: 1 866 GO FESTO (1 866 463 3786)  
Fax: 1 877 FX FESTO (1 877 393 3786)  
Email: technical.support@ca.festo.com

### USA Customers

Commercial Support:  
Tel: 1 800 99 FESTO (1 800 993 3786)  
Fax: 1 800 96 FESTO (1 800 963 3786)  
Email: customer.service@us.festo.com

Technical Support:  
Tel: 1 866 GO FESTO (1 866 463 3786)  
Fax: 1 800 96 FESTO (1 800 963 3786)  
Email: product.support@us.festo.com