

# Solenoid valves VZWD, directly actuated, NPT



# Solenoid valves VZWD, directly actuated, NPT

Key features and overview

FESTO

## General



Directly actuated solenoid valves VZWD are mainly intended for applications with high pressure ranges and low flow rates. This type of valve switches the sealing

element directly via the solenoid system. The seal generally has to lift away from the seat against the effective operating pressure using just the drive. A closing spring

keeps the valve closed assisted by the pressure of the medium. The function is dependent on the seat size, the effective operating

pressure and the magnetic force. The difference with force pilot operated solenoid valves (VZWF) lies in the flow rate.

## General

-  - Connecting thread  
N $\frac{1}{4}$ , N $\frac{1}{8}$
-  - Flow rate Kv  
0.06 ... 0.4 m<sup>3</sup>/h

## Areas of application

- Use in vacuum technology
- Venting gas and tank systems
- Safety shut-offs for burner controllers

## Design

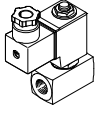
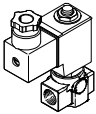
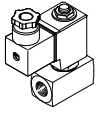
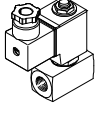
- Design insensitive to slight contamination of the media

## Advantages

- Valves switch from 0 bar up to the max. operating pressure
- Excellent tightness

# Solenoid valves VZWD, directly actuated, NPT

Key features and overview

Version	Type	Process valve connection	Nominal size (DN)	Operating pressure <sup>1)</sup> [bar]	→ Page/Internet
<b>Brass housing</b>					
	VZWD-L-...	NPT $\frac{1}{4}$	1	0 ... 50	5
			1.5	0 ... 30	
			2	0 ... 15	
			2.5	0 ... 8	
		NPT $\frac{1}{8}$	1	0 ... 50	5
			1.5	0 ... 30	
			2	0 ... 15	
<b>Brass housing</b>					
	VZWD-L-...	NPT $\frac{1}{4}$	1	0 ... 90	8
			1.5	0 ... 85	
			2	0 ... 40	
			2.5	0 ... 22	
			3	0 ... 15	
			4	0 ... 8	
			5	0 ... 5	
			6	0 ... 4	
		NPT $\frac{1}{8}$	1	0 ... 90	8
			1.5	0 ... 85	
			2	0 ... 40	
			2.5	0 ... 22	
			3	0 ... 15	
			4	0 ... 8	
<b>Stainless steel housing</b>					
	VZWD-L-...-R1	NPT $\frac{1}{4}$	1	0 ... 90	13
			1.5	0 ... 85	
			2	0 ... 40	
			2.5	0 ... 22	
			3	0 ... 15	
			4	0 ... 8	
			5	0 ... 5	
			6	0 ... 4	
	VZWD-L-...-R1	NPT $\frac{1}{8}$	1	0 ... 90	13
			1.5	0 ... 85	
			2	0 ... 40	
			2.5	0 ... 22	
			3	0 ... 15	
			4	0 ... 8	
			5	0 ... 5	
			6	0 ... 4	

1) The valves are suitable for vacuum with Pabs > 100 mbar. Please ensure the direction of flow corresponds to the direction of the arrow.

# Solenoid valves VZWD, directly actuated, NPT

Type codes

VZWD - L - M22C - M - N18 - 15 - V - 2AP4 - 40 - R1

## Type

VZWD	Solenoid valve, directly actuated
------	-----------------------------------

## Type of directional control valve

L	In-line valve
---	---------------

## Valve function

M22C	2/2-way valve, normally closed, mechanical reset
------	--------------------------------------------------

## Reset method

M	Mechanical spring
---	-------------------

## Process valve connection

N18	NPT <sup>1</sup> / <sub>8</sub>
N14	NPT <sup>1</sup> / <sub>4</sub>

## Nominal size (DN)

10	1.0 mm
15	1.5 mm
20	2.0 mm
25	2.5 mm
30	3.0 mm
40	4.0 mm
50	5.0 mm
60	6.0 mm

## Sealing material

V	FPM
---	-----

## Nominal operating voltage

1	24 V DC
2A	110 V AC/50-60 Hz
3A	230 V AC/50-60 Hz

## Electrical connection

P4	Plug socket, 3-pin
----	--------------------

## Operating pressure

4	Max. 4 bar
5	Max. 5 bar
8	Max. 8 bar
15	Max. 15 bar
22	Max. 22 bar
30	Max. 30 bar
40	Max. 40 bar
50	Max. 50 bar
85	Max. 85 bar
90	Max. 90 bar

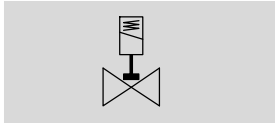
## Corrosion protection


	Brass
R1	Stainless steel


# Solenoid valves VZWD, directly actuated, NPT

Technical data – Brass housing, nominal pressure PN 50

Function



-  - Flow rate Kv  
0.06 ... 0.16 m<sup>3</sup>/h

-  - Connecting thread  
N<sup>1</sup>/<sub>4</sub>, N<sup>1</sup>/<sub>8</sub>



General technical data		1.0	1.5	2.0	2.5
Nominal size (DN)		1.0	1.5	2.0	2.5
Valve function		2/2-way, single solenoid, closed			
Design		Directly actuated poppet valve			
Type of mounting		In-line installation			
Actuation type		Electric			
Reset method		Mechanical spring			
Direction of flow		Non-reversible			
Type of control		Direct			
Manual override		None			
Mounting position		Any			
Sealing principle		Soft			
Max. viscosity	[mm <sup>2</sup> /s]	22			
Protection class		IP65			

Operating and environmental conditions		1.0	1.5	2.0	2.5
Nominal size (DN)		1.0	1.5	2.0	2.5
Standard nominal flow rate	[l/min]	60	95	140	170
Flow rate Kv	[m <sup>3</sup> /h]	0.06	0.09	0.13	0.16
Process valve nominal pressure (PN)		50			
Process valve operating medium		Compressed air in accordance with ISO 8573-1:2010 [7:4:4]			
		Inert gases			
		Mineral oil			
		Neutral liquids			
		Water			
		Further media upon request			
Differential pressure	[bar]	0			
Ambient temperature	[°C]	-10 ... +35 °C			
Temperature of medium	[°C]	-10 ... +80 °C			
Leak rate to EN 12266-1		A			
Corrosion resistance class CRC <sup>1)</sup>		1			

1) Corrosion resistance class 1 according to Festo standard 940 070  
Components subject to low corrosion stress. Transport and storage protection. Parts that do not have primarily decorative surface requirements, e.g. in internal areas that are not visible or behind covers.

# Solenoid valves VZWD, directly actuated, NPT



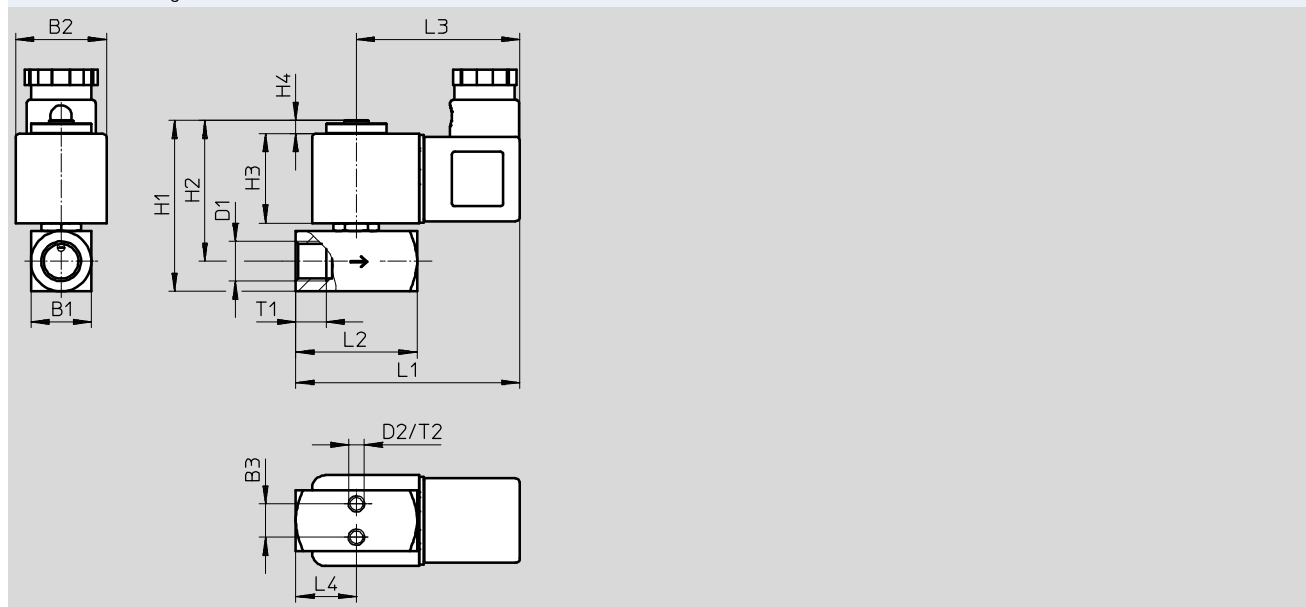
Technical data – Brass housing, nominal pressure PN 50

Electrical data		VZWD- ... 1	VZWD- ... 2A	VZWD- ... 3A
Electrical connection		Plug to EN 175301-803 type A, square design		
CE marking		–	73/23/EEC	73/23/EEC
Insulation class		H	F	F
Duty cycle	[%]	100		
Permissible voltage fluctuations	[%]	±10		
Coil characteristics	Direct current DC	[V]	24	–
	Alternating current AC	[V]	–	110
		[W]	6.8	–
	Pick-up power	[VA]	–	10.5
	Holding power	[VA]	–	8
		[Hz]	–	50, 60
	Switching time on	[ms]	25	
Switching time off	[ms]	10		

Materials		
Solenoid valves		Material number
1 Housing	High-alloy stainless steel	1.4305
	Brass	CW614N
2 Seals	FPM	
– Note on materials	Contains PWIS (paint-wetting impairment substances), RoHS-compliant	

## Dimensions Download CAD data → [www.festo.com/en/engineering](http://www.festo.com/en/engineering)

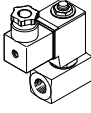
Milled brass housing

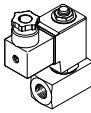


Type	B1	B2	B3	D1	D2	H1	H2	H3	H4	L1	L2	L3	L4	L5	T1	T2
VZWD-...-N $\frac{1}{8}$ -10-...-50	15	30	8	NPT $\frac{1}{8}$	M3	52	44	30	5	70	32	54	16	–	8	4.5
VZWD-...-N $\frac{1}{8}$ -15-...-30																
VZWD-...-N $\frac{1}{8}$ -20-...-15																
VZWD-...-N $\frac{1}{4}$ -10-...-50	20	30	11	NPT $\frac{1}{4}$	M5	57	47	30	5	74	40	54	20	–	10	5.5
VZWD-...-N $\frac{1}{4}$ -15-...-30																
VZWD-...-N $\frac{1}{4}$ -20-...-15																
VZWD-...-N $\frac{1}{4}$ -25-...-8																

# Solenoid valves VZWD, directly actuated, NPT

Technical data – Brass housing, nominal pressure PN 50

Ordering data						
	Process valve connection	Nominal size	Operating pressure	Product weight	Brass housing	
		DN	[bar]	[g]	Part No.	Type
	N <sup>1</sup> / <sub>4</sub>	1	0 ... 50	350	1491945	VZWD-L-M22C-M-N14-10-V-2AP4-50
					1492023	VZWD-L-M22C-M-N14-10-V-3AP4-50
					1491867	VZWD-L-M22C-M-N14-10-V-1P4-50
		1.5	0 ... 30	350	1491946	VZWD-L-M22C-M-N14-15-V-2AP4-30
					1492024	VZWD-L-M22C-M-N14-15-V-3AP4-30
					1491868	VZWD-L-M22C-M-N14-15-V-1P4-30
	2	0 ... 15	350	1491947	VZWD-L-M22C-M-N14-20-V-2AP4-15	
				1492025	VZWD-L-M22C-M-N14-20-V-3AP4-15	
				1491869	VZWD-L-M22C-M-N14-20-V-1P4-15	
	2.5	0 ... 8	350	1491948	VZWD-L-M22C-M-N14-25-V-2AP4-8	
				1492026	VZWD-L-M22C-M-N14-25-V-3AP4-8	
				1491870	VZWD-L-M22C-M-N14-25-V-1P4-8	

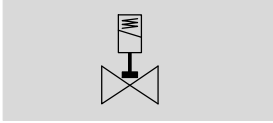
Ordering data						
	Process valve connection	Nominal size	Operating pressure	Product weight	Brass housing	
		DN	[bar]	[g]	Part No.	Type
	N <sup>1</sup> / <sub>8</sub>	1	0 ... 50	300	1491942	VZWD-L-M22C-M-N18-10-V-2AP4-50
					1492020	VZWD-L-M22C-M-N18-10-V-3AP4-50
					1491864	VZWD-L-M22C-M-N18-10-V-1P4-50
	1.5	0 ... 30	300	1491943	VZWD-L-M22C-M-N18-15-V-2AP4-30	
				1492021	VZWD-L-M22C-M-N18-15-V-3AP4-30	
				1491865	VZWD-L-M22C-M-N18-15-V-1P4-30	
	2	0 ... 15	300	1491944	VZWD-L-M22C-M-N18-20-V-2AP4-15	
				1492022	VZWD-L-M22C-M-N18-20-V-3AP4-15	
				1491866	VZWD-L-M22C-M-N18-20-V-1P4-15	

# Solenoid valves VZWD, directly actuated, NPT

Technical data – Brass housing, nominal pressure PN 100

FESTO

Function



- - Flow rate Kv  
0.06 ... 0.4 m<sup>3</sup>/h

Nominal size (DN)  
1.0 ... 6.0 mm

- - Connecting thread  
N<sup>1</sup>/<sub>4</sub>, N<sup>1</sup>/<sub>8</sub>



General technical data								
Nominal size (DN)	1.0	1.5	2.0	2.5	3.0	4.0	5.0	6.0
Valve function	2/2-way, single solenoid, closed							
Design	Directly actuated poppet valve							
Type of mounting	In-line installation							
Actuation type	Electric							
Reset method	Mechanical spring							
Direction of flow	Non-reversible							
Type of control	Direct							
Manual override	None							
Mounting position	Any							
Sealing principle	Soft							
Max. viscosity [mm <sup>2</sup> /s]	22							
Protection class	IP65							

Operating and environmental conditions								
Nominal size (DN)	1.0	1.5	2.0	2.5	3.0	4.0	5.0	6.0
Standard nominal flow rate [l/min]	60	95	140	170	210	310	375	430
Flow rate Kv [m <sup>3</sup> /h]	0.06	0.09	0.13	0.16	0.2	0.3	0.35	0.4
Process valve nominal pressure (PN)	100							
Differential pressure [bar]	0							
Process valve operating medium	Compressed air in accordance with ISO 8573-1:2010 [7:4:4]							
	Inert gases							
	Mineral oil							
	Neutral liquids							
	Water							
	Further media upon request							
Ambient temperature [°C]	-10 ... +35 °C							
Temperature of medium [°C]	-10 ... +80 °C							
Leak rate to EN 12266-1	A							
Corrosion resistance class CRC <sup>1)</sup>	1							

1) Corrosion resistance class 1 according to Festo standard 940 070  
Components subject to low corrosion stress. Transport and storage protection. Parts that do not have primarily decorative surface requirements, e.g. in internal areas that are not visible or behind covers.



# Solenoid valves VZWD, directly actuated, NPT

Technical data – Brass housing, nominal pressure PN 100

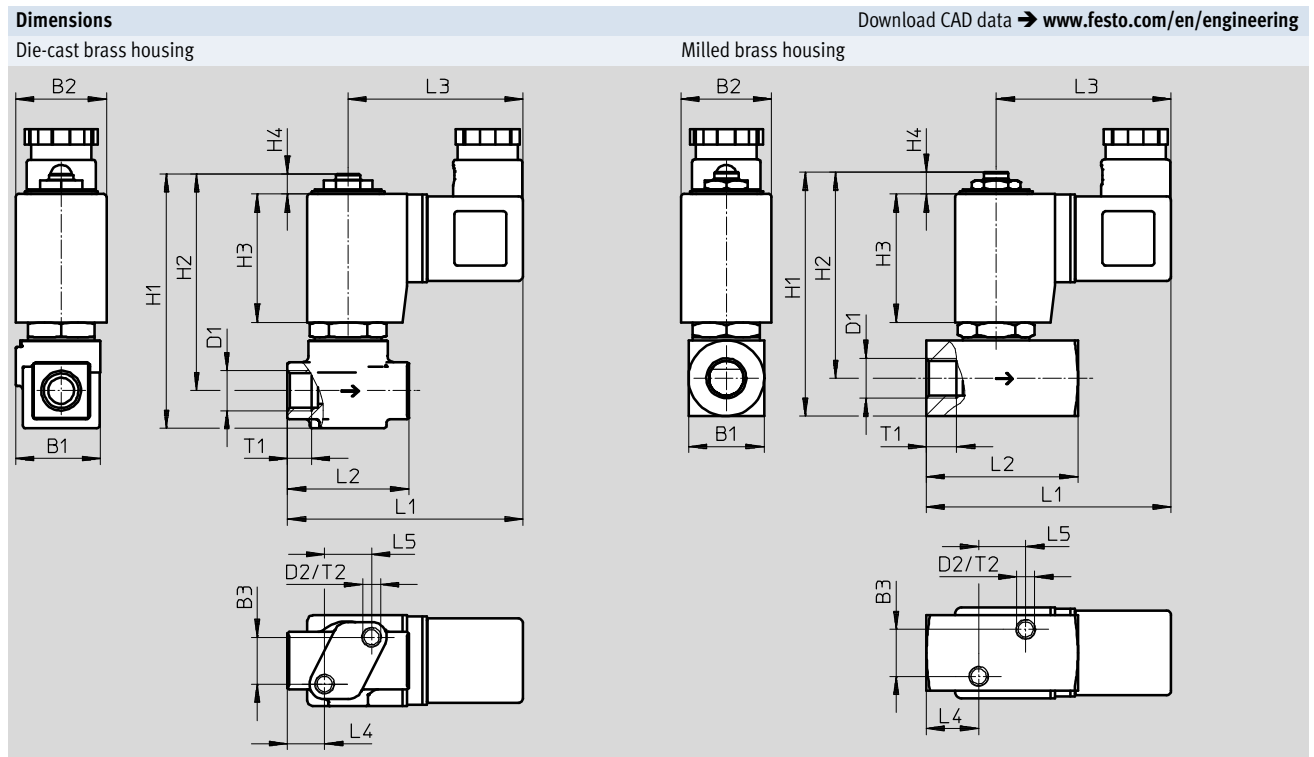
Electrical data			
	VZWD- ... 1	VZWD- ... 2A	VZWD- ... 3A
Electrical connection	Plug to EN 175301-803 type A, square design		
CE marking	–	73/23/EEC	73/23/EEC
Insulation class	H	F	F
Duty cycle	[%] 100		
Permissible voltage fluctuations	[%] ±10		
Coil characteristics	Direct current DC	[V] 24	–
	Alternating current AC	[V] –	110
		[W] 11	–
	Pick-up power	[VA] –	19
	Holding power	[VA] –	16
		[Hz] –	50, 60
	Switching time on	[ms] 20	
Switching time off	[ms] 18		

Materials		
Solenoid valves		Material number
1 Housing	High-alloy stainless steel	1.4305
	Brass	CW614N
2 Seals	FPM	
– Note on materials	Contains PWIS (paint-wetting impairment substances), RoHS-compliant	

# Solenoid valves VZWD, directly actuated, NPT



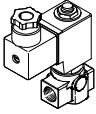
Technical data – Brass housing, nominal pressure PN 100

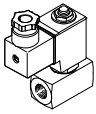


Type	B1	B2	B3	D1	D2	H1	H2	H3	H4	L1	L2	L3	L4	L5	T1	T2
VZWD-...N1/8-10-...-90	28	30	15.5	NPT1/8	M6	84	72	42.5	6.5	78	40	58	12	15.5	8	6
VZWD-...N1/8-15-...-85																
VZWD-...N1/8-20-...-40																
VZWD-...N1/8-25-...-22																
VZWD-...N1/8-30-...-15																
VZWD-...N1/8-40-...-8																
VZWD-...N1/4-10-...-90	28	30	15.5	NPT1/4	M6	84	72	42.5	6.5	78	40	58	12	15.5	10	6
VZWD-...N1/4-15-...-85																
VZWD-...N1/4-20-...-40																
VZWD-...N1/4-25-...-22																
VZWD-...N1/4-30-...-15																
VZWD-...N1/4-40-...-8																
VZWD-...N1/8-50-...-5	25	30	15.5	NPT1/8	M6	81	68	42.5	7	78	40	58	12	15.5	8	6
VZWD-...N1/8-60-...-4																
VZWD-...N1/4-50-...-5	25	30	15.5	NPT1/4	M6	81	68	42.5	7	85	50	58	17	15.5	10	6
VZWD-...N1/4-60-...-4																

# Solenoid valves VZWD, directly actuated, NPT

Technical data – Brass housing, nominal pressure PN 100


Ordering data						
	Process valve connection	Nominal size	Operating pressure	Product weight	Brass housing	
		DN	[bar]	[g]	Part No.	Type
	NPT $\frac{1}{4}$	1	0 ... 90	550	1491957	VZWD-L-M22C-M-N14-10-V-2AP4-90
					1492040	VZWD-L-M22C-M-N14-10-V-3AP4-90
					1491879	VZWD-L-M22C-M-N14-10-V-1P4-90
		1.5	0 ... 85	550	1491958	VZWD-L-M22C-M-N14-15-V-2AP4-85
					1492041	VZWD-L-M22C-M-N14-15-V-3AP4-85
					1491880	VZWD-L-M22C-M-N14-15-V-1P4-85
		2	0 ... 40	550	1491959	VZWD-L-M22C-M-N14-20-V-2AP4-40
					1492042	VZWD-L-M22C-M-N14-20-V-3AP4-40
					1491881	VZWD-L-M22C-M-N14-20-V-1P4-40
		2.5	0 ... 22	550	1491960	VZWD-L-M22C-M-N14-25-V-2AP4-22
					1492043	VZWD-L-M22C-M-N14-25-V-3AP4-22
					1491882	VZWD-L-M22C-M-N14-25-V-1P4-22
		3	0 ... 15	550	1491961	VZWD-L-M22C-M-N14-30-V-2AP4-15
					1492044	VZWD-L-M22C-M-N14-30-V-3AP4-15
					1491883	VZWD-L-M22C-M-N14-30-V-1P4-15
		4	0 ... 8	550	1491962	VZWD-L-M22C-M-N14-40-V-2AP4-8
					1492045	VZWD-L-M22C-M-N14-40-V-3AP4-8
					1491884	VZWD-L-M22C-M-N14-40-V-1P4-8

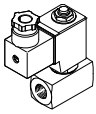
Ordering data						
	Process valve connection	Nominal size	Operating pressure	Product weight	Brass housing	
		DN	[bar]	[g]	Part No.	Type
	NPT $\frac{1}{4}$	5	0 ... 5	600	1491885	VZWD-L-M22C-M-N14-50-V-1P4-5
					1491963	VZWD-L-M22C-M-N14-50-V-2AP4-5
					1492046	VZWD-L-M22C-M-N14-50-V-3AP4-5
		6	0 ... 4	600	1491886	VZWD-L-M22C-M-N14-60-V-1P4-4
					1491964	VZWD-L-M22C-M-N14-60-V-2AP4-4
					1492047	VZWD-L-M22C-M-N14-60-V-3AP4-4

# Solenoid valves VZWD, directly actuated, NPT

FESTO

Technical data – Brass housing, nominal pressure PN 100

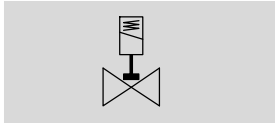
Ordering data						
	Process valve connection	Nominal size	Operating pressure	Product weight	Brass housing	
		DN	[bar]	[g]	Part No.	Type
	NPT $\frac{1}{8}$	1	0 ... 90	550	1491949	VZWD-L-M22C-M-N18-10-V-2AP4-90
					1492027	VZWD-L-M22C-M-N18-10-V-3AP4-90
					1491871	VZWD-L-M22C-M-N18-10-V-1P4-90
		1.5	0 ... 85	550	1491950	VZWD-L-M22C-M-N18-15-V-2AP4-85
					1492028	VZWD-L-M22C-M-N18-15-V-3AP4-85
					1491872	VZWD-L-M22C-M-N18-15-V-1P4-85
		2	0 ... 40	550	1491951	VZWD-L-M22C-M-N18-20-V-2AP4-40
					1492029	VZWD-L-M22C-M-N18-20-V-3AP4-40
					1491873	VZWD-L-M22C-M-N18-20-V-1P4-40
		2.5	0 ... 22	550	1491952	VZWD-L-M22C-M-N18-25-V-2AP4-22
					1492030	VZWD-L-M22C-M-N18-25-V-3AP4-22
					1491874	VZWD-L-M22C-M-N18-25-V-1P4-22
		3	0 ... 15	550	1491953	VZWD-L-M22C-M-N18-30-V-2AP4-15
					1492031	VZWD-L-M22C-M-N18-30-V-3AP4-15
					1491875	VZWD-L-M22C-M-N18-30-V-1P4-15
		4	0 ... 8	550	1491954	VZWD-L-M22C-M-N18-40-V-2AP4-8
					1492032	VZWD-L-M22C-M-N18-40-V-3AP4-8
					1491876	VZWD-L-M22C-M-N18-40-V-1P4-8


Ordering data						
	Process valve connection	Nominal size	Operating pressure	Product weight	Brass housing	
		DN	[bar]	[g]	Part No.	Type
	NPT $\frac{1}{8}$	5	0 ... 5	600	1491877	VZWD-L-M22C-M-N18-50-V-1P4-5
					1491955	VZWD-L-M22C-M-N18-50-V-2AP4-5
					1492033	VZWD-L-M22C-M-N18-50-V-3AP4-5
		6	0 ... 4	600	1491878	VZWD-L-M22C-M-N18-60-V-1P4-4
					1491956	VZWD-L-M22C-M-N18-60-V-2AP4-4
					1492034	VZWD-L-M22C-M-N18-60-V-3AP4-4


# Solenoid valves VZWD, directly actuated, NPT

Technical data – Stainless steel housing, nominal pressure PN 100

Function



-  - Flow rate Kv  
0.06 ... 0.4 m<sup>3</sup>/h

-  - Connecting thread  
N<sup>1</sup>/<sub>4</sub>, N<sup>1</sup>/<sub>8</sub>



General technical data								
Nominal size (DN)	1.0	1.5	2.0	2.5	3.0	4.0	5.0	6.0
Valve function	2/2-way, single solenoid, closed							
Design	Directly actuated poppet valve							
Type of mounting	In-line installation							
Actuation type	Electric							
Reset method	Mechanical spring							
Type of control	Direct							
Manual override	None							
Mounting position	Any							
Sealing principle	Soft							
Direction of flow	Non-reversible							
Max. viscosity [mm <sup>2</sup> /s]	22							
Protection class	IP65							

Operating and environmental conditions								
Nominal size (DN)	1.0	1.5	2.0	2.5	3.0	4.0	5.0	6.0
Standard nominal flow rate [l/min]	60	95	140	170	210	310	375	430
Flow rate Kv [m <sup>3</sup> /h]	0.06	0.09	0.13	0.16	0.2	0.3	0.35	0.4
Process valve nominal pressure (PN)	100							
Process valve operating medium	Compressed air in accordance with ISO 8573-1:2010 [7:4:4]							
	Inert gases							
	Mineral oil							
	Neutral liquids							
	Water							
	Further media upon request							
Differential pressure [bar]	0							
Ambient temperature [°C]	-10 ... +35 °C							
Temperature of medium [°C]	-10 ... +80 °C							
Leak rate to EN 12266-1	A							
Corrosion resistance class CRC <sup>1)</sup>	3							

1) Corrosion resistance class 3 according to Festo standard 940 070  
Components subject to high corrosion stress. Externally visible parts with primarily decorative surface requirements which are in direct contact with a normal industrial environment or media such as solvents and cleaning agents.

# Solenoid valves VZWD, directly actuated, NPT

Technical data – Stainless steel housing, nominal pressure PN 100

Electrical data		VZWD- ... 1	VZWD- ... 2A	VZWD- ... 3A
Electrical connection		Plug to EN 175301-803 type A, square design		
CE marking		–	73/23/EEC	73/23/EEC
Insulation class		H	F	F
Duty cycle [%]		100		
Permissible voltage fluctuations [%]		±10		
Coil characteristics	Direct current DC [V]	24	–	–
	Alternating current AC [V]	–	110	230
	[W]	11	–	–
	Pick-up power [VA]	–	10.5	10.5
	Holding power [VA]	–	8	7.6
	[Hz]	–	50, 60	50, 60
	Switching time on [ms]	20		
Switching time off [ms]	18			

Materials		
Solenoid valves		Material number
1 Housing	High-alloy stainless steel	1.4305
2 Seals	FPM	
– Note on materials	Contains PWIS (paint-wetting impairment substances), RoHS-compliant	

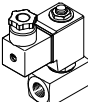
**Dimensions** Download CAD data → [www.festo.com/en/engineering](http://www.festo.com/en/engineering)

The drawing shows three views of the solenoid valve. The front view shows dimensions B1 (width of the valve body), B2 (width of the coil), and H1 (total height). The side view shows dimensions H2 (height to top of coil), H3 (height to top of valve body), H4 (height to top of coil), L1 (total length), L2 (length of valve body), and L3 (total length including coil). The top view shows dimensions B3 (width of valve body), L4 (length of valve body), L5 (length of coil), and D2/T2 (diameter of valve body).

Type	B1	B2	B3	D1	D2	H1	H2	H3	H4	L1	L2	L3	L4	L5	T1	T2
VZWD-...-N <sup>1</sup> / <sub>8</sub> -50-...-5	25	30	15.5	NPT <sup>1</sup> / <sub>8</sub>	M6	81	68	42.5	7	78	40	58	12	15.5	8	6
VZWD-...-N <sup>1</sup> / <sub>8</sub> -60-...-4																
VZWD-...-N <sup>1</sup> / <sub>4</sub> -50-...-5	25	30	15.5	NPT <sup>1</sup> / <sub>4</sub>	M6	81	68	42.5	7	85	50	58	17	15.5	10	6
VZWD-...-N <sup>1</sup> / <sub>4</sub> -60-...-4																

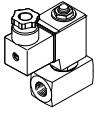
# Solenoid valves VZWD, directly actuated, NPT

Technical data – Stainless steel housing, nominal pressure PN 100

Ordering data – Solenoid valve VZWD						
	Process valve connection	Nominal size	Operating pressure	Product weight	Stainless steel casting housing	
		DN	[bar]	[g]	Part No.	Type
	NPT $\frac{1}{4}$	1	0 ... 90	650	1491895	VZWD-L-M22C-M-N14-10-V-1P4-90-R1
					1491973	VZWD-L-M22C-M-N14-10-V-2AP4-90-R1
					1492090	VZWD-L-M22C-M-N14-10-V-3AP4-90-R1
		1.5	0 ... 85	650	1491896	VZWD-L-M22C-M-N14-15-V-1P4-85-R1
					1491974	VZWD-L-M22C-M-N14-15-V-2AP4-85-R1
					1492091	VZWD-L-M22C-M-N14-15-V-3AP4-85-R1
		2	0 ... 40	650	1491897	VZWD-L-M22C-M-N14-20-V-1P4-40-R1
					1491975	VZWD-L-M22C-M-N14-20-V-2AP4-40-R1
					1492092	VZWD-L-M22C-M-N14-20-V-3AP4-40-R1
		2.5	0 ... 22	650	1491898	VZWD-L-M22C-M-N14-25-V-1P4-22-R1
					1491976	VZWD-L-M22C-M-N14-25-V-2AP4-22-R1
					1492093	VZWD-L-M22C-M-N14-25-V-3AP4-22-R1
		3	0 ... 15	650	1491899	VZWD-L-M22C-M-N14-30-V-1P4-15-R1
					1491977	VZWD-L-M22C-M-N14-30-V-2AP4-15-R1
					1492094	VZWD-L-M22C-M-N14-30-V-3AP4-15-R1
		4	0 ... 8	650	1491900	VZWD-L-M22C-M-N14-40-V-1P4-8-R1
					1491978	VZWD-L-M22C-M-N14-40-V-2AP4-8-R1
					1492095	VZWD-L-M22C-M-N14-40-V-3AP4-8-R1
		5	0 ... 5	650	1491901	VZWD-L-M22C-M-N14-50-V-1P4-5-R1
					1491979	VZWD-L-M22C-M-N14-50-V-2AP4-5-R1
					1492096	VZWD-L-M22C-M-N14-50-V-3AP4-5-R1
		6	0 ... 4	650	1491902	VZWD-L-M22C-M-N14-60-V-1P4-4-R1
					1491980	VZWD-L-M22C-M-N14-60-V-2AP4-4-R1
					1492097	VZWD-L-M22C-M-N14-60-V-3AP4-4-R1

# Solenoid valves VZWD, directly actuated, NPT

Technical data – Stainless steel housing, nominal pressure PN 100

Ordering data – Solenoid valve VZWD						
	Process valve connection	Nominal size	Operating pressure	Product weight	Stainless steel casting housing	
		DN	[bar]	[g]	Part No.	Type
	NPT $\frac{1}{8}$	1	0 ... 90	500	1491887	VZWD-L-M22C-M-N18-10-V-1P4-90-R1
					1491965	VZWD-L-M22C-M-N18-10-V-2AP4-90-R1
					1492048	VZWD-L-M22C-M-N18-10-V-3AP4-90-R1
		1.5	0 ... 85	500	1491888	VZWD-L-M22C-M-N18-15-V-1P4-85-R1
					1491966	VZWD-L-M22C-M-N18-15-V-2AP4-85-R1
					1492049	VZWD-L-M22C-M-N18-15-V-3AP4-85-R1
		2	0 ... 40	500	1491889	VZWD-L-M22C-M-N18-20-V-1P4-40-R1
					1491967	VZWD-L-M22C-M-N18-20-V-2AP4-40-R1
					1492050	VZWD-L-M22C-M-N18-20-V-3AP4-40-R1
		2.5	0 ... 22	500	1491890	VZWD-L-M22C-M-N18-25-V-1P4-22-R1
					1491968	VZWD-L-M22C-M-N18-25-V-2AP4-22-R1
					1492051	VZWD-L-M22C-M-N18-25-V-3AP4-22-R1
		3	0 ... 15	500	1491891	VZWD-L-M22C-M-N18-30-V-1P4-15-R1
					1491969	VZWD-L-M22C-M-N18-30-V-2AP4-15-R1
					1492052	VZWD-L-M22C-M-N18-30-V-3AP4-15-R1
		4	0 ... 8	500	1491892	VZWD-L-M22C-M-N18-40-V-1P4-8-R1
					1491970	VZWD-L-M22C-M-N18-40-V-2AP4-8-R1
					1492053	VZWD-L-M22C-M-N18-40-V-3AP4-8-R1
		5	0 ... 5	500	1491893	VZWD-L-M22C-M-N18-50-V-1P4-5-R1
					1491971	VZWD-L-M22C-M-N18-50-V-2AP4-5-R1
					1492054	VZWD-L-M22C-M-N18-50-V-3AP4-5-R1
		6	0 ... 4	500	1491894	VZWD-L-M22C-M-N18-60-V-1P4-4-R1
					1491972	VZWD-L-M22C-M-N18-60-V-2AP4-4-R1
					1492055	VZWD-L-M22C-M-N18-60-V-3AP4-4-R1



## Product Range and Company Overview

### A Complete Suite and Company Overview

Our experienced engineers provide complete support at every stage of your development process, including: conceptualization, analysis, engineering, design, assembly, documentation, validation, and production.



**Custom Automation Components**  
Complete custom engineered solutions



**Custom Control Cabinets**  
Comprehensive engineering support and on-site services



**Complete Systems**  
Shipment, stocking and storage services

### The Broadest Range of Automation Components

With a comprehensive line of more than 30,000 automation components, Festo is capable of solving the most complex automation requirements.



**Electromechanical**  
Electromechanical actuators, motors, controllers & drivers



**Pneumatics**  
Pneumatic linear and rotary actuators, valves, and air supply



**PLCs and I/O Devices**  
PLC's, operator interfaces, sensors and I/O devices

### Supporting Advanced Automation... As No One Else Can!

Festo is a leading global manufacturer of pneumatic and electromechanical systems, components and controls for industrial automation, with more than 16,000 employees in 60 national headquarters serving more than 180 countries. For more than 80 years, Festo has continuously elevated the state of manufacturing with innovations and optimized motion control solutions that deliver higher performing, more profitable automated manufacturing and processing equipment. Our dedication to the advancement of automation extends beyond technology to the education and development of current and future automation and robotics designers with simulation tools, teaching programs, and on-site services.

### Quality Assurance, ISO 9001 and ISO 14001 Certifications

Festo Corporation is committed to supply all Festo products and services that will meet or exceed our customers' requirements in product quality, delivery, customer service and satisfaction.

To meet this commitment, we strive to ensure a consistent, integrated, and systematic approach to management that will meet or exceed the requirements of the ISO 9001 standard for Quality Management and the ISO 14001 standard for Environmental Management.

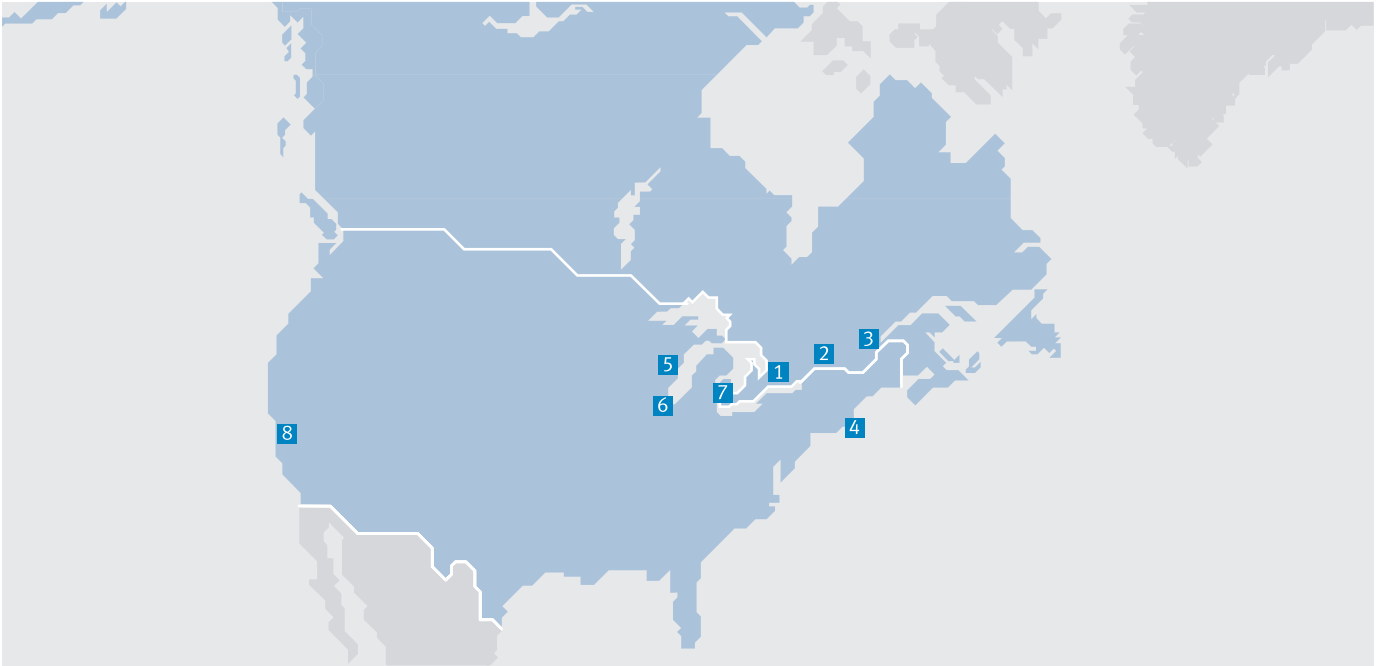


© Copyright 2013, Festo Corporation. While every effort is made to ensure that all dimensions and specifications are correct, Festo cannot guarantee that publications are completely free of any error, in particular typing or printing errors. Accordingly, Festo cannot be held responsible for the same. For Liability and Warranty conditions, refer to our "Terms and Conditions of Sale", available from your local Festo office. All rights reserved. No part of this publication may be reproduced, distributed, or transmitted in any form or by any means, electronic, mechanical, photocopying or otherwise, without the prior written permission of Festo. All technical data subject to change according to technical update.



Printed on recycled paper at New Horizon Graphic, Inc., FSC certified as an environmental friendly printing plant.

# Festo North America



**1 Festo Canada  
Headquarters  
Festo Inc.**  
5300 Explorer Drive  
Mississauga, ON  
L4W 5G4

**2 Montréal**  
5600, Trans-Canada  
Pointe-Claire, QC  
H9R 1B6

**3 Québec City**  
2930, rue Watt#117  
Québec, QC  
G1X 4G3



**4 Festo United States  
Headquarters  
Festo Corporation**  
395 Moreland Road  
Hauppauge, NY  
11788

**5 Appleton**  
North 922 Tower View Drive, Suite N  
Greenville, WI  
54942

**7 Detroit**  
1441 West Long Lake Road  
Troy, MI  
48098

**6 Chicago**  
85 W Algonquin - Suite 340  
Arlington Heights, IL  
60005

**8 Silicon Valley**  
4935 Southfront Road, Suite F  
Livermore, CA  
94550

## Festo Regional Contact Center

### Canadian Customers

Commercial Support:  
Tel: 1 877 GO FESTO (1 877 463 3786)  
Fax: 1 877 FX FESTO (1 877 393 3786)  
Email: festo.canada@ca.festo.com

Technical Support:  
Tel: 1 866 GO FESTO (1 866 463 3786)  
Fax: 1 877 FX FESTO (1 877 393 3786)  
Email: technical.support@ca.festo.com

### USA Customers

Commercial Support:  
Tel: 1 800 99 FESTO (1 800 993 3786)  
Fax: 1 800 96 FESTO (1 800 963 3786)  
Email: customer.service@us.festo.com

Technical Support:  
Tel: 1 866 GO FESTO (1 866 463 3786)  
Fax: 1 800 96 FESTO (1 800 963 3786)  
Email: product.support@us.festo.com