

Quick exhaust valves VBQF



Quick exhaust valves VBQF

Product range overview and type codes



Function

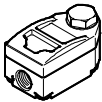
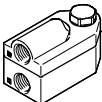

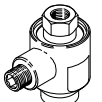
Higher piston speeds can be achieved on the return stroke of single and double-acting drives with the quick exhaust valves VBQF. Compressed air flows from the control valve via the VBQF to the drive. The

exhaust port 3 is closed at this time. When the pressure at 1 falls, exhaust flow occurs from 2 to 3. In order to implement a quick exhaust, the VBQF must be attached

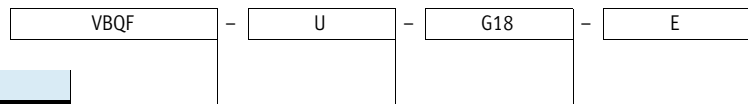
directly to the supply port of the drive. The VBQF can be mounted in any position and can also be turned. The VBQF is available with or without silencer.

Features:

- Minimal height
- High flow rate
- Improved noise emissions
- Can be rotated (continuous rotation of the connection must, however, be avoided)

Product range overview						
Function	Version	Type	Pneumatic connection		→ Page/Internet	
			1 (valve)	2 (drive)		
Quick exhaust valves	Flat design					
		VBQF-U	With silencer	G ¹ / ₈ , QS-6	G ¹ / ₈	3
				G ¹ / ₄ , QS-8	G ¹ / ₄	
		VBQF-D	Without silencer	G ¹ / ₈ , QS-6	G ¹ / ₈	3
				G ¹ / ₄	G ¹ / ₄	
	Compact design					
	SEU	With silencer	G ¹ / ₈ , G ¹ / ₄ , G ³ / ₈ , G ¹ / ₂	G ¹ / ₈ , G ¹ / ₄ , G ³ / ₈ , G ¹ / ₂	seu	
	SE	Without silencer	G ¹ / ₈ , G ¹ / ₄ , G ³ / ₈ , G ¹ / ₂ , G ³ / ₄	G ¹ / ₈ , G ¹ / ₄ , G ³ / ₈ , G ¹ / ₂ , G ³ / ₄	se	

Type codes



Type	
VBQF	Quick exhaust valve, flat design

Exhaust air	
U	Unducted exhaust air
D	Ducted exhaust air

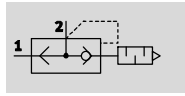
Pneumatic connection 2 (drive)	
G18	Thread G ¹ / ₈
G14	Thread G ¹ / ₄

Pneumatic connection 1 (valve)	
E	Threaded connection, like pneumatic connection 2 (drive)
Q6	Push-in connector QS-6
Q8	Push-in connector QS-8

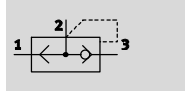
Quick exhaust valves VBQF




Technical data

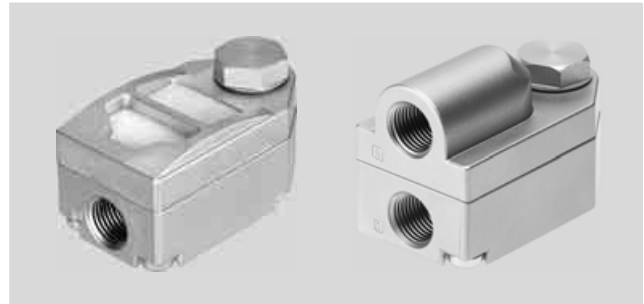
Unducted exhaust air VBQF-U



Ducted exhaust air VBQF-D



-  - Flow rate
2,500 l/min
-  - Temperature range
-20 ... +80 °C
-  - Operating pressure
0.5 ... 10 bar



General technical data							
Exhaust air	Unducted exhaust air VBQF-U				Ducted exhaust air VBQF-D		
Pneumatic connection 2 (drive)	G1/8		G1/4		G1/8		G1/4
Pneumatic connection 1 (valve)	G1/8	QS-6	G1/4	QS-8	G1/8	QS-6	G1/4
Pneumatic connection 3 (exhaust air)	- (silencer)		- (silencer)		G1/8	QS-8	G1/4
Valve function	Quick exhaust						
Nominal size [mm]	5		7		5		7
Type of mounting	Screw-in						
Mounting position	Any						
Noise level [dB (A)]	75		75		-		-

Operating and environmental conditions		
Type of connection	Threaded connection	Push-in connector QS
Operating pressure [bar]	0.5 ... 10	
Operating medium	Compressed air in accordance with ISO 8573-1:2010 [7:4:4]	
Note on operating/pilot medium	Operation with lubricated medium possible (in which case lubricated operation will always be required)	
Ambient temperature [°C]	-20 ... +80	-10 ... +60
Temperature of medium [°C]	-20 ... +80	-10 ... +60
Corrosion resistance class CRC ¹⁾	1	

1) Corrosion resistance class 1 according to Festo standard 940 070
Components subject to low corrosion stress. Transport and storage protection. Parts that do not have primarily decorative surface requirements, e.g. in internal areas that are not visible or behind covers.

Materials	
Housing	Die-cast zinc, die-cast aluminium
Seals	NBR
Note on materials	RoHS-compliant

Quick exhaust valves VBQF

Technical data

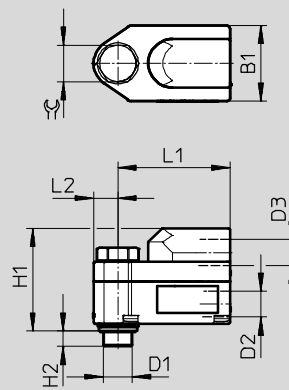
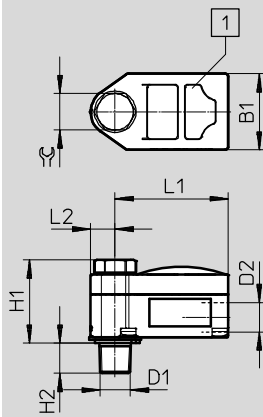
FESTO

Dimensions

Download CAD data → www.festo.com

Unducted exhaust air VBQF-U

Ducted exhaust air VBQF-D



1 Silencer

Type	Connection D1	D2	D3	B1	H1	H2	L1	L2	☉
VBQF-U-G18-E	G $\frac{1}{8}$	G $\frac{1}{8}$	-	25	27.4	5.3	37	8	12
VBQF-U-G18-Q6		QS-6	-						
VBQF-U-G14-E	G $\frac{1}{4}$	G $\frac{1}{4}$	-	32	38	6.2	54	10.5	15
VBQF-U-G14-Q8		QS-8	-						
VBQF-D-G18-E	G $\frac{1}{8}$	G $\frac{1}{8}$	G $\frac{1}{8}$	25	33.9	5.3	37	8	12
VBQF-D-G18-Q6		QS-6	QS-8						
VBQF-D-G14-E	G $\frac{1}{4}$	G $\frac{1}{4}$	G $\frac{1}{4}$	32	42	6.2	54	10.5	15

Ordering data

Version	Pneumatic connection			Standard nominal flow rate qnN at 6 bar → 5 bar		Standard flow rate qn at 6 bar → 0 bar	Weight [g]	Part No.	Type
				Pressurisation 1 → 2	Exhausting 2 → 3	Exhausting 2 → 3			
				2	1	3			
Unducted exhaust air									
	G $\frac{1}{8}$	G $\frac{1}{8}$	-	350	-	1,300	84.2	547531	VBQF-U-G18-E
		QS-6	-	350	-	1,300	85.5	547532	VBQF-U-G18-Q6
	G $\frac{1}{4}$	G $\frac{1}{4}$	-	960	-	2,500	226	548001	VBQF-U-G14-E
		QS-8	-	800	-	2,500	232	548002	VBQF-U-G14-Q8
Ducted exhaust air									
	G $\frac{1}{8}$	G $\frac{1}{8}$	G $\frac{1}{8}$	350	850	1,300	102.5	547533	VBQF-D-G18-E
		QS-6	QS-8	350	850	1,300	105	547534	VBQF-D-G18-Q6
	G $\frac{1}{4}$	G $\frac{1}{4}$	G $\frac{1}{4}$	960	1,500	2,500	253	548003	VBQF-D-G14-E

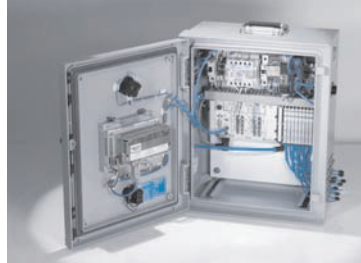
Product Range and Company Overview

A Complete Suite and Company Overview

Our experienced engineers provide complete support at every stage of your development process, including: conceptualization, analysis, engineering, design, assembly, documentation, validation, and production.



Custom Automation Components
Complete custom engineered solutions



Custom Control Cabinets
Comprehensive engineering support and on-site services



Complete Systems
Shipment, stocking and storage services

The Broadest Range of Automation Components

With a comprehensive line of more than 30,000 automation components, Festo is capable of solving the most complex automation requirements.



Electromechanical
Electromechanical actuators, motors, controllers & drivers



Pneumatics
Pneumatic linear and rotary actuators, valves, and air supply



PLCs and I/O Devices
PLC's, operator interfaces, sensors and I/O devices

Supporting Advanced Automation... As No One Else Can!

Festo is a leading global manufacturer of pneumatic and electromechanical systems, components and controls for industrial automation, with more than 16,000 employees in 60 national headquarters serving more than 180 countries. For more than 80 years, Festo has continuously elevated the state of manufacturing with innovations and optimized motion control solutions that deliver higher performing, more profitable automated manufacturing and processing equipment. Our dedication to the advancement of automation extends beyond technology to the education and development of current and future automation and robotics designers with simulation tools, teaching programs, and on-site services.

Quality Assurance, ISO 9001 and ISO 14001 Certifications

Festo Corporation is committed to supply all Festo products and services that will meet or exceed our customers' requirements in product quality, delivery, customer service and satisfaction.

To meet this commitment, we strive to ensure a consistent, integrated, and systematic approach to management that will meet or exceed the requirements of the ISO 9001 standard for Quality Management and the ISO 14001 standard for Environmental Management.

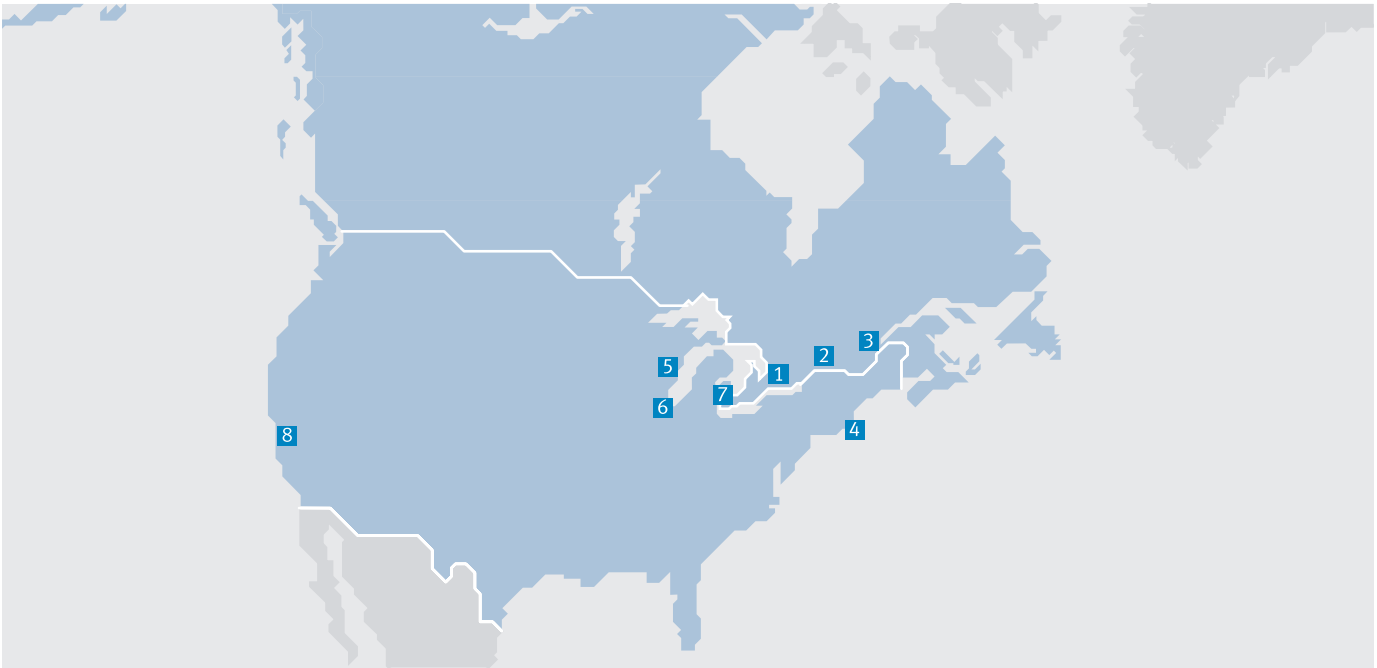


© Copyright 2013, Festo Corporation. While every effort is made to ensure that all dimensions and specifications are correct, Festo cannot guarantee that publications are completely free of any error, in particular typing or printing errors. Accordingly, Festo cannot be held responsible for the same. For Liability and Warranty conditions, refer to our "Terms and Conditions of Sale", available from your local Festo office. All rights reserved. No part of this publication may be reproduced, distributed, or transmitted in any form or by any means, electronic, mechanical, photocopying or otherwise, without the prior written permission of Festo. All technical data subject to change according to technical update.



Printed on recycled paper at New Horizon Graphic, Inc., FSC certified as an environmental friendly printing plant.

Festo North America



**1 Festo Canada
Headquarters
Festo Inc.**
5300 Explorer Drive
Mississauga, ON
L4W 5G4

2 Montréal
5600, Trans-Canada
Pointe-Claire, QC
H9R 1B6

3 Québec City
2930, rue Watt#117
Québec, QC
G1X 4G3



**4 Festo United States
Headquarters
Festo Corporation**
395 Moreland Road
Hauppauge, NY
11788

5 Appleton
North 922 Tower View Drive, Suite N
Greenville, WI
54942

7 Detroit
1441 West Long Lake Road
Troy, MI
48098

6 Chicago
85 W Algonquin - Suite 340
Arlington Heights, IL
60005

8 Silicon Valley
4935 Southfront Road, Suite F
Livermore, CA
94550

Festo Regional Contact Center

Canadian Customers

Commercial Support:
Tel: 1 877 GO FESTO (1 877 463 3786)
Fax: 1 877 FX FESTO (1 877 393 3786)
Email: festo.canada@ca.festo.com

Technical Support:
Tel: 1 866 GO FESTO (1 866 463 3786)
Fax: 1 877 FX FESTO (1 877 393 3786)
Email: technical.support@ca.festo.com

USA Customers

Commercial Support:
Tel: 1 800 99 FESTO (1 800 993 3786)
Fax: 1 800 96 FESTO (1 800 963 3786)
Email: customer.service@us.festo.com

Technical Support:
Tel: 1 866 GO FESTO (1 866 463 3786)
Fax: 1 800 96 FESTO (1 800 963 3786)
Email: product.support@us.festo.com