

Threaded fittings







FESTO



Threaded fittings

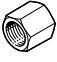
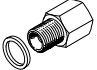



Product range overview

FESTO

Design	Version	Type	Connection D1			Connection D2			→ Page/ Internet	
			M thread	G thread	R thread	M thread	G thread	R thread		
Straight type	Blanking plug									
		B	M3	-	-	-	-	-	4	
			M5							
			M7							
			-							G1/8
										G1/4
										G3/8
										G1/2
			G3/4							
			G1							
	Reducing nipple – Male thread/female thread									
		D	M5	-	-	M7	-	-	5	
		D	M3	-	-	M5	-	-	6	
			M5							
			M7							
	-		G1/8							
			G1/4							
			G3/8							
			G1/2							
		G3/4								
			G1/8, G1/4							
			G1/8							
			G1/4, G3/8							
			G3/8, G1/2, G3/4							
			G1/2, G3/4							
			G3/4, G1							
			G1							
Double nipple										
	E	M3	-	-	M3	-	-	7		
		M5								
		M7								
		-							G1/8	
									G1/4	
									G3/8	
									G1/2	
		G3/4								
			G1/8							
			G1/8, G1/4, G3/8							
			G1/4, G3/8, G1/2							
			G3/8, G1/2							
			G1/2, G3/4							
			G3/4							
	ESK	-	-	R1/8	-	-	R1/8, R1/4, R3/8	8		
				R1/4			R1/4, R3/8, R1/2			
				R3/8			R3/8, R1/2			
				R1/2			R1/2			
Bulkhead fitting										
	SCM	M5	-	-	-	-	-	8		
		-							G1/8	
									G1/4	
									G3/8	
									G1/2	

Threaded fittings

Product range overview

Design	Version	Type	Connection D1			Connection D2			→ Page/ Internet	
			M thread	G thread	R thread	M thread	G thread	R thread		
Straight type	Sleeve									
		QM	M5	–	–	–	–	–	–	9
			–	G1/8						
				G1/4						
				G3/8						
				G1/2						
				G3/4						
		G1								
		QM	M5	–	–	–	M5	–	–	9
			–	G1/8			–	G1/8		
			G1/4				G1/4			
			G3/8				G3/8			
			G1/2				G1/2			
Reducing sleeve										
	QMR	–	G1/8	–	–	M5	–	–	10	
			G1/4			–	G1/8			
			G3/8				G1/4			
			G1/2				G3/8			
L-shape	Elbow fitting									
		LJK	–	G1/8	–	–	–	–	–	11
				G1/4						
				G3/8						
			G1/2							
T-type	T-fitting									
		TJK	M3	–	–	–	–	–	–	11
			–	G1/8						
				G1/4						
				G3/8						
	G1/2									

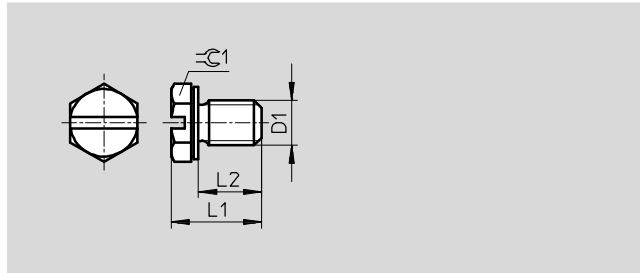
Threaded fittings

Technical data

Blanking plug B-M3-S9 with sealing ring

Material:
High-alloy stainless steel

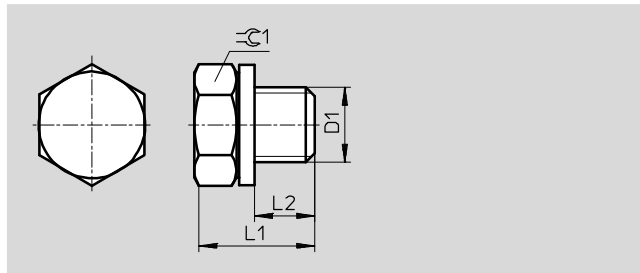
Note on materials:
Free of copper and PTFE



Blanking plug B-M5 with sealing ring

Material:
Aluminium

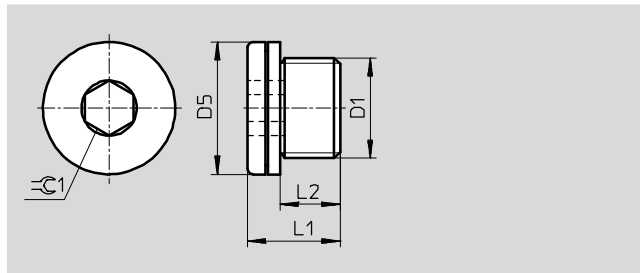
Note on materials:
Free of copper and PTFE



Blanking plug B with sealing ring

Material:
Steel

Note on materials:
Free of copper and PTFE



Dimensions and ordering data									
Pneumatic connection	D5	L1	L2	$\approx C1$	Weight/piece [g]	Part No.	Type	PU ¹⁾	
D1	\varnothing								
M thread									
M3	-	5.3	2.8	4.5	1	30979	B-M3-S9 ²⁾	10	
M5	-	7.8	3.8	7	1	3843	B-M5	10	
		8	6.3	3.8	2.5	2	534212	B-M5-100	100
M7	9.5	7.8	5.3	3	2	174308	B-M5-B	10	
							174309	B-M7	10
G thread									
G ¹ / ₈	14	11	6.4	5	5	3568	B- ¹ / ₈ ³⁾	10	
						534213	B- ¹ / ₈ -100 ³⁾	100	
G ¹ / ₄	18	15	9.8	6	15	3569	B- ¹ / ₄ ³⁾	10	
						534214	B- ¹ / ₄ -50 ³⁾	50	
G ³ / ₈	22	15	9.8	8	22	3570	B- ³ / ₈ ³⁾	10	
						534215	B- ³ / ₈ -20 ³⁾	20	
G ¹ / ₂	26	18	11.65	10	43	3571	B- ¹ / ₂ ³⁾	10	
						534216	B- ¹ / ₂ -20 ³⁾	20	
G ³ / ₄	32	20	13.05	12	73	3572	B- ³ / ₄ ³⁾	1	
G1	39	21	14	17	153	5763	B-1	1	

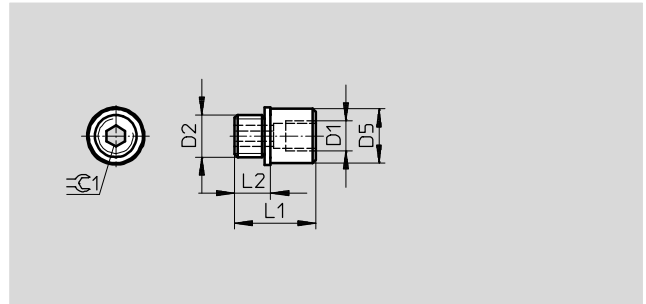
1) Packaging unit quantity
2) Corrosion and acid resistant version
3) RoHS-compliant

Threaded fittings

Technical data

Reducing nipple D with sealing ring

Material:
Brass



Dimensions and ordering data									
Pneumatic connection		D5	L1	L2	$\approx \text{C} 1$	Weight/piece [g]	Part No.	Type	PU ¹⁾
D1	D2								
M5	M7	9	13.3	5.3	3	43	161359	D-M5I-M7A-ISK	10

1) Packaging unit quantity

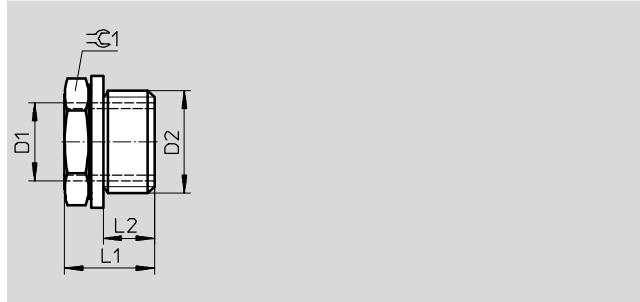
Threaded fittings

Technical data

FESTO

Reducing nipple D with sealing ring

Note on materials:
RoHS-compliant



Dimensions and ordering data								
Pneumatic connection		L1	L2	≈C1	Weight/piece [g]	Part No.	Type	PU ¹⁾
D1	D2							
M thread – High-alloy stainless steel								
M3	M5	6.3	3.8	7	1	30980	D-M3I-M5A-S9 ²⁾	10
M thread – Brass								
M5	G ¹ / ₈	9.5	4.9	13	10	3842	D-M5I- ¹ / ₈ A	10
						534208	D-M5I- ¹ / ₈ A-100	100
	G ¹ / ₄	12	5.8	17	12	197632	D-M5I- ¹ / ₄ A	10
M7	G ¹ / ₈	9.5	4.9	13	–	534144	D-M7I- ¹ / ₈ A	10
G thread – Brass								
G ¹ / ₈	G ¹ / ₄	12	5.8	17	8	3577	D- ¹ / ₈ I- ¹ / ₄ A	10
							534209	D- ¹ / ₈ I- ¹ / ₄ A-100
	G ³ / ₈	14	6.8	19	–	534147	D- ¹ / ₈ I- ³ / ₈ A	10
G ¹ / ₄	G ³ / ₈	14	6.8	19	14	3581	D- ¹ / ₄ I- ³ / ₈ A	10
							534210	D- ¹ / ₄ I- ³ / ₈ A-50
	G ¹ / ₂	15.5	8.15	24	36	197633	D- ¹ / ₄ I- ¹ / ₂ A	10
	G ³ / ₄	20.4	9.05	32	–	534145	D- ¹ / ₄ I- ³ / ₄ A	10
G ³ / ₈	G ¹ / ₂	15.5	8.15	24	25	3585	D- ³ / ₈ I- ¹ / ₂ A	10
							534211	D- ³ / ₈ I- ¹ / ₂ A-20
	G ³ / ₄	20.4	9.05	32	–	534146	D- ³ / ₈ I- ³ / ₄ A	10
G ¹ / ₂	G ³ / ₄	20.4	9.05	32	45	3588	D- ¹ / ₂ I- ³ / ₄ A	1
							197634	D- ¹ / ₂ I-1A
G ³ / ₄	G1	21	11	36	110	197634	D- ¹ / ₂ I-1A	1
G ³ / ₄	G1	21	11	36	55	9168	D- ³ / ₄ I-1A	1
G thread – Wrought aluminium alloy								
G ¹ / ₈	G ¹ / ₄	12	5.8	17	7	183585	D- ¹ / ₈ I- ¹ / ₄ A-AL	1
G ¹ / ₄	G ³ / ₈	14	6.8	19	8	183586	D- ¹ / ₄ I- ³ / ₈ A-AL	1
G ³ / ₈	G ¹ / ₂	15.5	8.15	24	10	183587	D- ³ / ₈ I- ¹ / ₂ A-AL	1
G ¹ / ₂	G ³ / ₄	20.4	9.05	32	24	183588	D- ¹ / ₂ I- ³ / ₄ A-AL	1
G ³ / ₄	G1	21	11	36	26	183589	D- ³ / ₄ I-1A-AL	1

1) Packaging unit quantity
2) Free of copper and PTFE

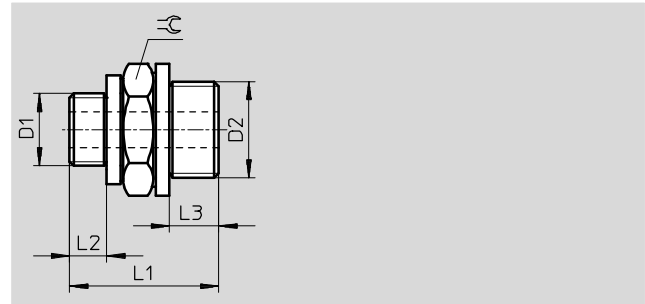
Threaded fittings

Technical data

FESTO

Double nipple E with 2 sealing rings

Note on materials:
RoHS-compliant



Dimensions and ordering data										
Pneumatic connection		Nominal size	L1	L2	L3	≈	Weight/piece [g]	Part No.	Type	PU ¹⁾
D1	D2									
M thread – High-alloy stainless steel										
M3	M3	1.7	10	2.8	2.8	4.5	1	30987	E-M3-M3-S9 ^{2) 3)}	10
M thread – Steel										
M5	M5	2.5	12.6	3.8	3.8	7	2	4139	E-M5-M5 ³⁾	10
	G ¹ / ₈	2.5	15.3	3.8	4.9	13	1	4138	E-M5- ¹ / ₈ ³⁾	10
								534204	E-M5- ¹ / ₈ -100 ³⁾	100
G thread – Wrought aluminium alloy										
G ¹ / ₈	G ¹ / ₈	4.5	17	4.9	4.9	13	1	3573	E- ¹ / ₈ - ¹ / ₈ ³⁾	10
	G ¹ / ₄	4.5	19.5	4.9	5.8	17	1	3574	E- ¹ / ₈ - ¹ / ₄ ³⁾	10
								534205	E- ¹ / ₈ - ¹ / ₄ -100 ³⁾	100
G ¹ / ₄	G ¹ / ₄	6.5	21	5.8	5.8	17	1	3575	E- ¹ / ₄ - ¹ / ₄ ³⁾	10
	G ³ / ₈	6.5	22	5.8	6.8	19	10	3576	E- ¹ / ₄ - ³ / ₈ ³⁾	10
								534206	E- ¹ / ₄ - ³ / ₈ -50 ³⁾	50
G ³ / ₈	G ³ / ₈	9.0	23	6.8	6.8	19	10	3578	E- ³ / ₈ - ³ / ₈ ³⁾	10
	G ¹ / ₂	9.0	26.5	6.8	8.15	24	20	3579	E- ³ / ₈ - ¹ / ₂ ³⁾	1
								534207	E- ³ / ₈ - ¹ / ₂ -20 ³⁾	20
G ¹ / ₂	G ¹ / ₂	13.0	28	8.15	8.15	24	20	3580	E- ¹ / ₂ - ¹ / ₂ ³⁾	1
	G ³ / ₄	13.0	30.5	8.5	9.05	32	35	3582	E- ¹ / ₂ - ³ / ₄ ³⁾	1
G ³ / ₄	G ³ / ₄	18.0	32	9.5	9.05	32	30	3584	E- ³ / ₄ - ³ / ₄ ³⁾	1
M thread – Brass										
M7	G ¹ / ₈	4.5	17.7	5.3	4.9	13		534148	E-M7- ¹ / ₈ -MS	10
G thread – Brass										
G ¹ / ₈	G ¹ / ₈	4.5	17	4.9	4.9	13	10	15621	E- ¹ / ₈ - ¹ / ₈ -MS	10
	G ¹ / ₄	4.5	19.5	4.9	5.8	17	20	15622	E- ¹ / ₈ - ¹ / ₄ -MS	10
	G ³ / ₈	5.3	20.4	4.9	6.8	19	25	534150	E- ¹ / ₈ - ³ / ₈ -MS	10
G ¹ / ₄	G ¹ / ₄	6.5	21	5.8	5.8	17	20	15623	E- ¹ / ₄ - ¹ / ₄ -MS	10
	G ³ / ₈	6.5	22	5.8	6.8	19	30	15624	E- ¹ / ₄ - ³ / ₈ -MS	10
	G ¹ / ₂	8	25.5	5.8	8.15	24	30	534149	E- ¹ / ₄ - ¹ / ₂ -MS	10
G ³ / ₈	G ³ / ₈	9	23	6.8	6.8	19	30	15625	E- ³ / ₈ - ³ / ₈ -MS	10
	G ¹ / ₂	9	26.5	6.8	8.15	24	53	15626	E- ³ / ₈ - ¹ / ₂ -MS	1
G ¹ / ₂	G ¹ / ₂	13	28	8.15	8.15	24	52	15627	E- ¹ / ₂ - ¹ / ₂ -MS	1
	G ³ / ₄	13	30.5	8.15	9.05	32	100	15628	E- ¹ / ₂ - ³ / ₄ -MS	1
G ³ / ₄	G ³ / ₄	18	32	9.05	9.05	32	100	15629	E- ³ / ₄ - ³ / ₄ -MS	1

1) Packaging unit quantity
2) Corrosion and acid resistant version
3) Free of copper and PTFE

Threaded fittings

Technical data

FESTO

Double nipple ESK

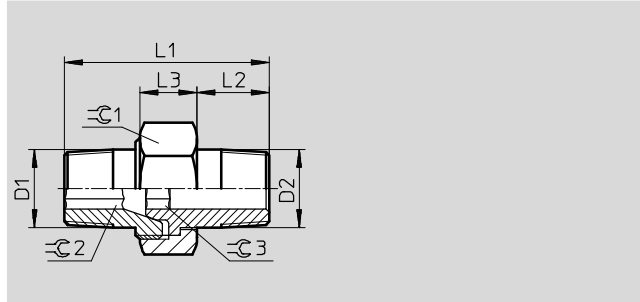
adjustable for angular compensation

Material:

Brass

Note on materials:

RoHS-compliant



Dimensions and ordering data										
Pneumatic connection		L1	L2	L3	⌀1	⌀2	⌀3	Part No.	Type	PU ¹⁾
D1	D2									
R ¹ / ₈	R ¹ / ₈	27	9	8.5	15	5	5	151520	ESK- ¹ / ₈ - ¹ / ₈	1
	R ¹ / ₄	30.6	12	9.5	19	5	6	534151	ESK- ¹ / ₈ - ¹ / ₄	1
	R ³ / ₈	34.5	13	10	22	5	8	534155	ESK- ¹ / ₈ - ³ / ₈	1
R ¹ / ₄	R ¹ / ₄	34	12	9.5	19	6	6	151521	ESK- ¹ / ₄ - ¹ / ₄	1
	R ³ / ₈	36	13	10	22	6	8	534152	ESK- ¹ / ₄ - ³ / ₈	1
	R ¹ / ₂	40.5	16	12	27	6	12	534153	ESK- ¹ / ₄ - ¹ / ₂	1
R ³ / ₈	R ³ / ₈	36	13	10	22	8	8	151522	ESK- ³ / ₈ - ³ / ₈	1
	R ¹ / ₂	44	16	12	27	8	12	534154	ESK- ³ / ₈ - ¹ / ₂	1
R ¹ / ₂	R ¹ / ₂	44	16	12	27	12	12	151523	ESK- ¹ / ₂ - ¹ / ₂	1

1) Packaging unit quantity

Bulkhead fitting SCM

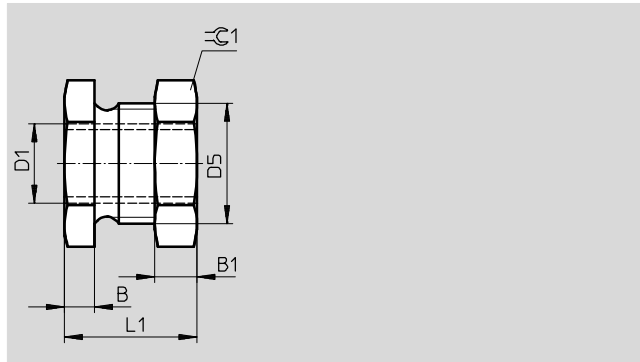
Material:

Anodised wrought aluminium alloy

Note on materials:

RoHS-compliant

Free of copper and PTFE



Dimensions and ordering data										
Pneumatic connection		D5	B	B1	L1	⌀1	Weight/piece [g]	Part No.	Type	PU ¹⁾
D1										
M5		M10x1	4	3.5	15.5	13	5	9969	SCM-M5	1
G ¹ / ₈		M14x1.5	5	5	20	17	10	9970	SCM- ¹ / ₈	1
G ¹ / ₄		M20x1.5	5	7	22	24	28	9971	SCM- ¹ / ₄	1
G ³ / ₈		M24x1.5	8	8.5	26.5	27	34	9972	SCM- ³ / ₈	1
G ¹ / ₂		M30x1.5	8	10.5	28.5	36	78	9973	SCM- ¹ / ₂	1

1) Packaging unit quantity

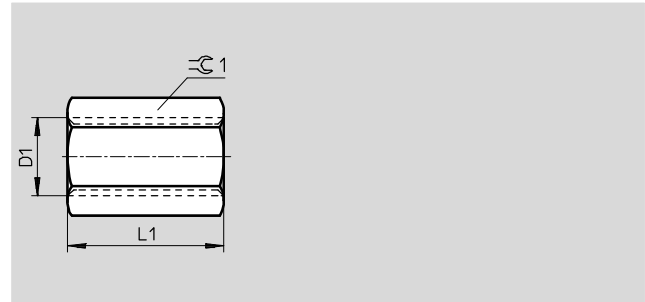
Threaded fittings

Technical data

Pipe coupling sleeve QM

Material:
Blue anodised aluminium
QM-M5-M5:
Steel

Note on materials:
Free of copper and PTFE
RoHS-compliant



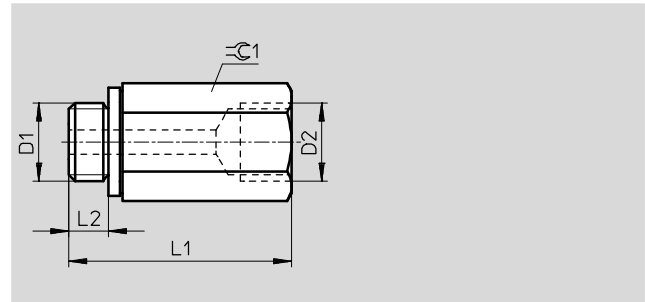
Dimensions and ordering data						
Pneumatic connection	L1	≈ 1	Weight/piece [g]	Part No.	Type	PU ¹⁾
D1						
M5	12	7	1	3560	QM-M5-M5	10
G $\frac{1}{8}$	22	13	6	2254	QM- $\frac{1}{8}$ - $\frac{1}{8}$	10
G $\frac{1}{4}$	26	17	9	2255	QM- $\frac{1}{4}$ - $\frac{1}{4}$	10
G $\frac{3}{8}$	32	22	19	2256	QM- $\frac{3}{8}$ - $\frac{3}{8}$	10
G $\frac{1}{2}$	36	27	31	2257	QM- $\frac{1}{2}$ - $\frac{1}{2}$	1
G $\frac{3}{4}$	36	32	36	4226	QM- $\frac{3}{4}$ - $\frac{3}{4}$	1
G1	40	41	80	9968	QM-1-1	1

1) Packaging unit quantity

Pipe coupling sleeve QM with sealing ring

Material:
Anodised wrought aluminium alloy
QM-M5-A/I:
Steel

Note on materials:
RoHS-compliant
Free of copper and PTFE



Dimensions and ordering data								
Pneumatic connection		L1	L2	≈ 1	Weight/piece [g]	Part No.	Type	PU ¹⁾
D1	D2							
M5	M5	18.5	3.8	7	4	36169	QM-M5-A/I	10
G $\frac{1}{8}$	G $\frac{1}{8}$	25.6	4.9	13	7	36170	QM- $\frac{1}{8}$ -A/I	10
G $\frac{1}{4}$	G $\frac{1}{4}$	36	5.8	17	15	36171	QM- $\frac{1}{4}$ -A/I	10
G $\frac{3}{8}$	G $\frac{3}{8}$	37.8	6.8	19	16	36172	QM- $\frac{3}{8}$ -A/I	10
G $\frac{1}{2}$	G $\frac{1}{2}$	49	8.15	24	36	187387	QM- $\frac{1}{2}$ -A/I	1

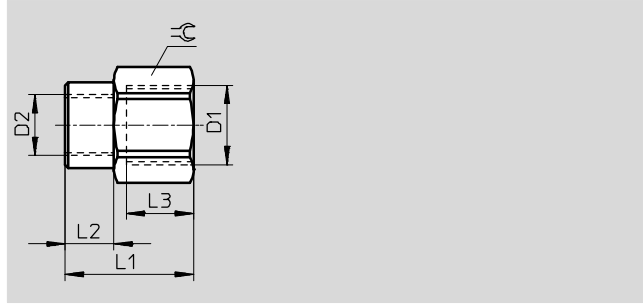
1) Packaging unit quantity

Threaded fittings

Technical data

Reducing sleeve QMR

Material:
Nickel plated brass



Dimensions and ordering data										
Pneumatic connection		Nominal size [mm]	L1	L2	L3	⌀	Weight/piece [g]	Part No.	Type	PU ¹⁾
D1	D2									
M thread										
G ¹ / ₈	M5	2.6	17	7	7	14	12	153281	QMR- ¹ / ₈ -M5-B	10
G thread										
G ¹ / ₄	G ¹ / ₈	5.3	21	8	9	17	22	153282	QMR- ¹ / ₄ - ¹ / ₈ -B	10
G ³ / ₈	G ¹ / ₄	6.9	25	11	11	21	34	153283	QMR- ³ / ₈ - ¹ / ₄ -B	10
G ¹ / ₂	G ³ / ₈	10.7	33	14	14	24	55	153284	QMR- ¹ / ₂ - ³ / ₈ -B	1

1) Packaging unit quantity

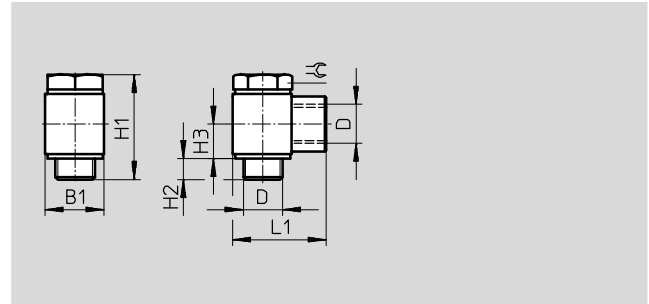
Threaded fittings

Technical data

FESTO

Elbow fitting LJK

Note on materials:
RoHS-compliant

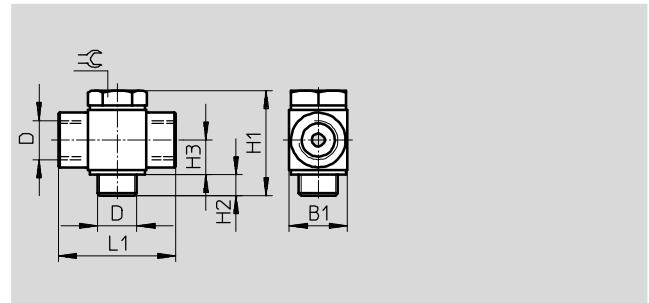


Dimensions and ordering data										
Pneumatic connection	Nominal size	B1	H1	H2	H3	L1	⌀	Part No.	Type	PU ¹⁾
D	[mm]									
G ¹ / ₈	4	16	27.1	4.7	9.2	23.5	13	4945	LJK- ¹ / ₈	10
G ¹ / ₄	6	20	34.3	5.7	11.8	31	17	4946	LJK- ¹ / ₄	10
G ³ / ₈	8	25	41.3	6.7	14.3	36.5	22	4947	LJK- ³ / ₈	10
G ¹ / ₂	12	30	46.6	7.5	17.05	44	27	4948	LJK- ¹ / ₂	1

1) Packaging unit quantity

T-fitting TJK

Note on materials:
RoHS-compliant



Operating and environmental conditions	
Operating medium	Compressed air in accordance with ISO 8573-1:2010 [7:-:-]
Note on operating/pilot medium	Operation with lubricated medium possible (in which case lubricated operation will always be required)

Dimensions and ordering data										
Pneumatic connection	Nominal size	B1	H1	H2	H3	L1	⌀	Part No.	Type	PU ¹⁾
D	[mm]									
M thread										
M3	1.2	5	10	2	3.3	10	4.5	15874	TJK-M3	10
G thread										
G ¹ / ₈	4	16	27.1	4.7	9.2	28	13	4949	TJK- ¹ / ₈	10
G ¹ / ₄	6	20	34.3	5.7	11.8	39	17	4950	TJK- ¹ / ₄	10
G ³ / ₈	8	25	41.3	6.7	14.3	43	22	4951	TJK- ³ / ₈	1
G ¹ / ₂	12	30	46.6	7.5	17.05	52	27	4952	TJK- ¹ / ₂	1

1) Packaging unit quantity

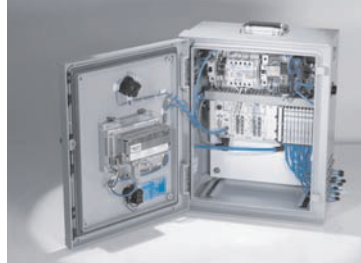
Product Range and Company Overview

A Complete Suite and Company Overview

Our experienced engineers provide complete support at every stage of your development process, including: conceptualization, analysis, engineering, design, assembly, documentation, validation, and production.



Custom Automation Components
Complete custom engineered solutions



Custom Control Cabinets
Comprehensive engineering support and on-site services



Complete Systems
Shipment, stocking and storage services

The Broadest Range of Automation Components

With a comprehensive line of more than 30,000 automation components, Festo is capable of solving the most complex automation requirements.



Electromechanical
Electromechanical actuators, motors, controllers & drivers



Pneumatics
Pneumatic linear and rotary actuators, valves, and air supply



PLCs and I/O Devices
PLC's, operator interfaces, sensors and I/O devices

Supporting Advanced Automation... As No One Else Can!

Festo is a leading global manufacturer of pneumatic and electromechanical systems, components and controls for industrial automation, with more than 16,000 employees in 60 national headquarters serving more than 180 countries. For more than 80 years, Festo has continuously elevated the state of manufacturing with innovations and optimized motion control solutions that deliver higher performing, more profitable automated manufacturing and processing equipment. Our dedication to the advancement of automation extends beyond technology to the education and development of current and future automation and robotics designers with simulation tools, teaching programs, and on-site services.

Quality Assurance, ISO 9001 and ISO 14001 Certifications

Festo Corporation is committed to supply all Festo products and services that will meet or exceed our customers' requirements in product quality, delivery, customer service and satisfaction.

To meet this commitment, we strive to ensure a consistent, integrated, and systematic approach to management that will meet or exceed the requirements of the ISO 9001 standard for Quality Management and the ISO 14001 standard for Environmental Management.

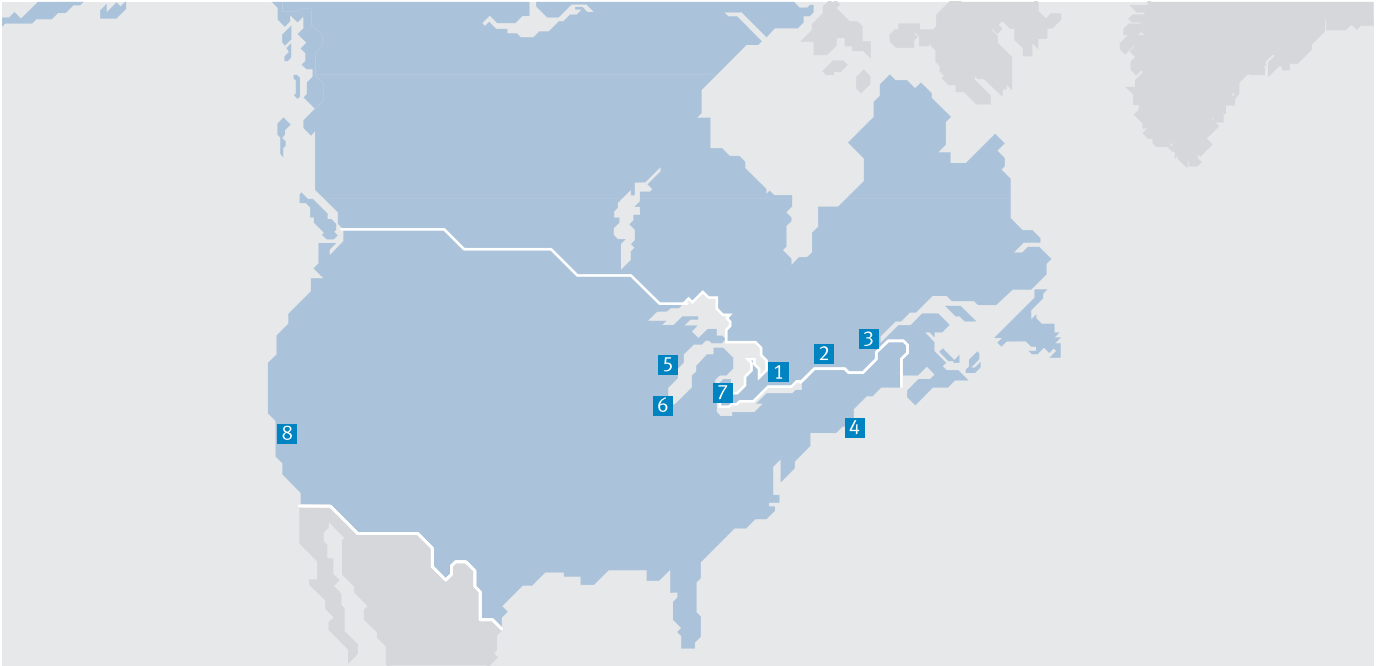


© Copyright 2013, Festo Corporation. While every effort is made to ensure that all dimensions and specifications are correct, Festo cannot guarantee that publications are completely free of any error, in particular typing or printing errors. Accordingly, Festo cannot be held responsible for the same. For Liability and Warranty conditions, refer to our "Terms and Conditions of Sale", available from your local Festo office. All rights reserved. No part of this publication may be reproduced, distributed, or transmitted in any form or by any means, electronic, mechanical, photocopying or otherwise, without the prior written permission of Festo. All technical data subject to change according to technical update.



Printed on recycled paper at New Horizon Graphic, Inc., FSC certified as an environmental friendly printing plant.

Festo North America



**1 Festo Canada
Headquarters
Festo Inc.**
5300 Explorer Drive
Mississauga, ON
L4W 5G4

2 Montréal
5600, Trans-Canada
Pointe-Claire, QC
H9R 1B6

3 Québec City
2930, rue Watt#117
Québec, QC
G1X 4G3



**4 Festo United States
Headquarters
Festo Corporation**
395 Moreland Road
Hauppauge, NY
11788

5 Appleton
North 922 Tower View Drive, Suite N
Greenville, WI
54942

7 Detroit
1441 West Long Lake Road
Troy, MI
48098

6 Chicago
85 W Algonquin - Suite 340
Arlington Heights, IL
60005

8 Silicon Valley
4935 Southfront Road, Suite F
Livermore, CA
94550

Festo Regional Contact Center

Canadian Customers

Commercial Support:
Tel: 1 877 GO FESTO (1 877 463 3786)
Fax: 1 877 FX FESTO (1 877 393 3786)
Email: festo.canada@ca.festo.com

Technical Support:
Tel: 1 866 GO FESTO (1 866 463 3786)
Fax: 1 877 FX FESTO (1 877 393 3786)
Email: technical.support@ca.festo.com

USA Customers

Commercial Support:
Tel: 1 800 99 FESTO (1 800 993 3786)
Fax: 1 800 96 FESTO (1 800 963 3786)
Email: customer.service@us.festo.com

Technical Support:
Tel: 1 866 GO FESTO (1 866 463 3786)
Fax: 1 800 96 FESTO (1 800 963 3786)
Email: product.support@us.festo.com