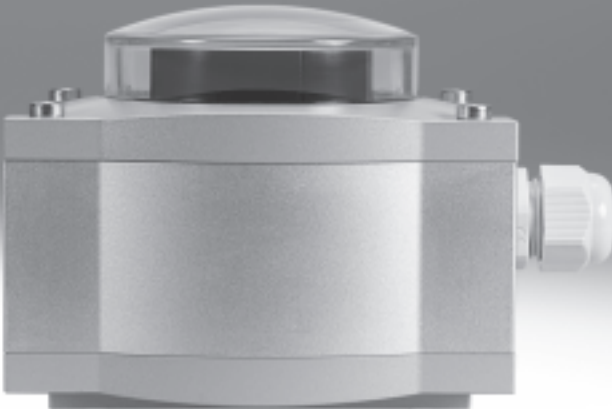


Sensor boxes SRAP, analogue



# Sensor boxes SRAP, analogue

Key features

FESTO

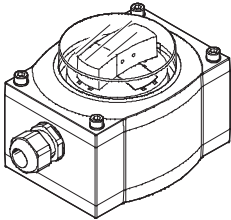
## General information

- Analogue sensor box for greater functionality. The analogue sensor box monitors the position of semi-rotary actuators and reports this back to the controller via an analogue 4 ... 20 mA output signal.

## Advantages

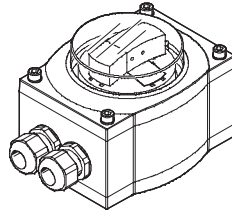
- Simple mounting and commissioning: can be mounted directly on the semi-rotary actuator DFPB without the need for mounting accessories, with teach-in function for flexible adjustment of the zero point within a range from 0 – 270°
- Everything in view, including from a distance: colour-based indication of the current position of the semi-rotary actuator
- Innovative and intelligent: homing to the actual swivel angle makes optimum use of the initial range
- Sturdy and explosion-proof: a match for even harsh, corrosive and potentially explosive environments thanks to corrosion-resistant and waterproof metal housing
- Insensitive to vibration. Always supplies a stable signal as there is no contact between the shaft and sensor
- Quick and easy integration in existing systems thanks to the industrial analogue output signal
- Cost and time savings thanks to the common power supply for the sensor box and solenoid valve
- Cost-efficient regulation in combination with 5/3-way valve compared with positioner solution
- Festo know-how in automation: concept and solution from a single source
- You can find information on the media resistance of the product at → [www.festo.com](http://www.festo.com)

### 1 cable connector



- Power supply for sensor box only

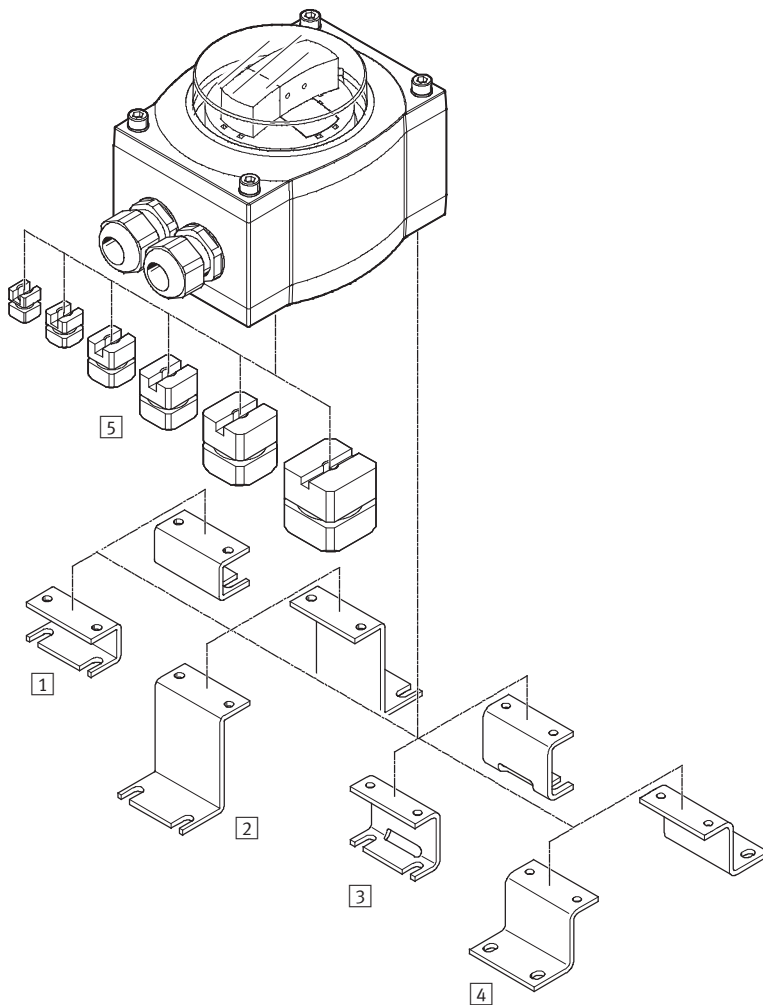
### 2 cable connectors



- Common power supply for sensor box and solenoid valve

# Sensor boxes SRAP, analogue

Peripherals overview



Mounting attachments and accessories		
	Brief description	→ Page/Internet
1	Adapter kit DASB-P1-HA-SB <sup>1)</sup>	Hole pattern 30x80 mm, height 20 mm dasb
2	Adapter kit DASB-P1-HL-SB	Hole pattern 30x130 mm, height 50 mm dasb
3	Adapter kit DASB-P1-HB-SB	Hole pattern 30x80 mm, height 30 mm dasb
4	Adapter kit DASB-P1-HC-SB	Hole pattern 30x130 mm, height 30 mm dasb
5	Coupling DARQ-C-S9	For direct mounting on semi-rotary actuators DFPB darq
	Coupling DARQ-C-S11	For direct mounting on semi-rotary actuators DFPB darq
	Coupling DARQ-C-S14	For direct mounting on semi-rotary actuators DFPB darq
	Coupling DARQ-C-S17	For direct mounting on semi-rotary actuators DFPB darq
	Coupling DARQ-C-S22	For direct mounting on semi-rotary actuators DFPB darq
	Coupling DARQ-C-S27	For direct mounting on semi-rotary actuators DFPB darq

1) The adapter kit DASB-P1-HA-SB can optionally be used for all DFPB actuators.

# Sensor boxes SRAP, analogue

Type codes

SRAP - M - CA1 - BB270 - 1 - A - T2P20 - EX2

### Function

SRAP	Analogue sensor box
------	---------------------

### Product version

M	Primarily metal
---	-----------------

### Design

C	Sensor box
---	------------

### Mechanical interface

A1	Direct mounting, hole pattern 30x80 mm
----	---

### Indicator type

	No indicator
BB	Blue/black position indicator
GR	Green/red position indicator
YB	Yellow/black position indicator

### Measuring range

270	0 ... 270°
-----	------------

### Nominal operating voltage

1	24 V DC
---	---------

### Electrical output

A	4 ... 20 mA
---	-------------

### Electrical connection

T	Terminal box
---	--------------

### Valve connection

	None
2	With valve connection

### Cable connector

M20	M20x1.5, metal
P20	M20x1.5, polymer

### Temperature range

	Standard -20 ... +80 °C
--	-------------------------

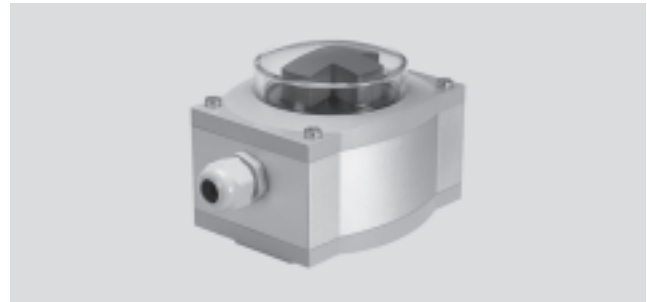
### EU certification

	None
EX2	II 3GD

## Sensor boxes SRAP, analogue

### Technical data

- The analogue sensor box not only reports the open/closed position of the semi-rotary actuator, but also detects the entire swivel range and reports this back to the controller via an analogue signal
- The integrated sensors are based on proven 2D Hall technology



General technical data		
Adjustment range for angle detection	[°]	0 ... 270
Based on standard		VDI/VDE 3845 (NAMUR)
Design		Angular
Mounting position		Any
Measured variable		Swivel angle
Measuring principle		Magnetic Hall
Adjustment options		Teach-in Teach-in via electrical connection
Idle current	[mA]	12 ... 20
Analogue output	[mA]	4 ... 20
Repetition accuracy of analogue output		+/- 1 deg
Operating voltage range	Direct voltage DC	[V] 15 ... 30
Insulation voltage	[V]	50
Surge capacity	[kV]	0.8
Protection against short circuit		Yes
Protection against overloading		Yes
Reverse polarity protection		For all electrical connections
Electrical connection		9-pin Screw terminal Plug-in
Cable connector		M20x1.5
Max. cable length	[m]	30
Permissible cable diameter	[mm]	5 ... 13
Connectable nominal conductor cross section	[mm <sup>2</sup> ]	2.5
Product weight	[g]	1,000
Housing material		Wrought aluminium alloy
Note on materials		RoHS-compliant

# Sensor boxes SRAP, analogue

Technical data

Operating and environmental conditions	
Certification	C-Tick
	c UL us - Recognized (OL)
Ambient temperature [°C]	-20 ... +80 °C
Protection class	IP65
CE mark (see declaration of conformity)	To EU EMC Directive
Electrical protection class	III
Degree of contamination	3
Corrosion resistance class CRC <sup>1)</sup>	3

- 1) Corrosion resistance class 3 according to Festo standard 940 070  
 Components subject to high corrosion stress. External visible parts in direct contact with industrial atmospheres or media such as solvents and cleaning agents, with a predominantly functional requirement for the surface.

Operating and environmental conditions with explosion protection	
Certification	C-Tick
	c UL us - Recognized (OL)
Ambient temperature [°C]	-20 ... +80 °C
Protection class	IP65
CE mark (see declaration of conformity)	To EU EMC Directive
	To EU Explosion Protection Directive (ATEX)
ATEX category for gas	II 3G
Explosion ignition protection type for gas	Ex nA IIC T5 X Gc
ATEX category for dust	II 3D
Explosion ignition protection type for dust	Ex tc IIIC T90°C X Dc IP65
Explosion-proof ambient temperature	-20 °C ≤ Ta ≤ +80 °C
Explosion protection certification outside the EU	EPL Dc (RU)
	EPL Gc (RU)
Electrical protection class	III
Degree of contamination	3
Corrosion resistance class CRC <sup>1)</sup>	3

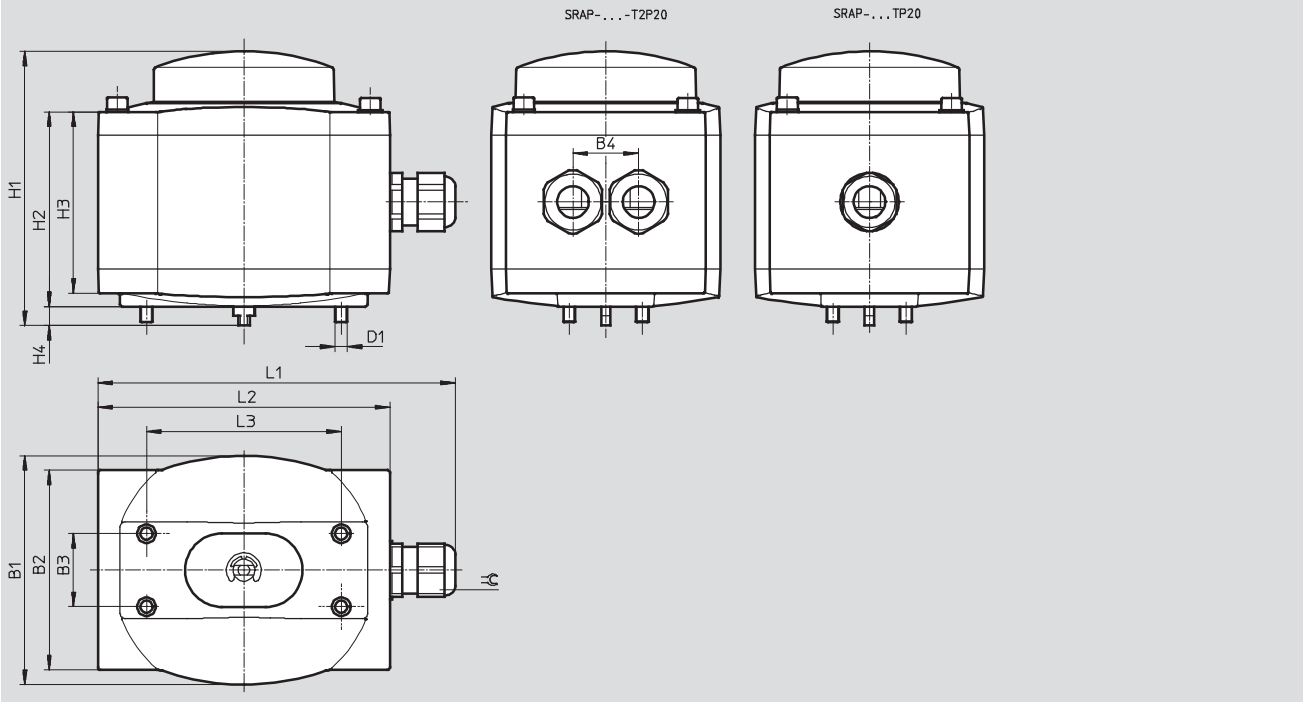
- 1) Corrosion resistance class 3 according to Festo standard 940 070  
 Components subject to high corrosion stress. External visible parts in direct contact with industrial atmospheres or media such as solvents and cleaning agents, with a predominantly functional requirement for the surface.

# Sensor boxes SRAP, analogue

Technical data

## Dimensions

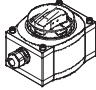
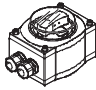
Download CAD data → [www.festo.com](http://www.festo.com)

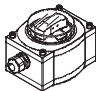
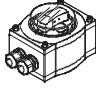


Type	B1	B2 ±1	B3	B4	D1	H1	H2	H3	H4	L1	L2 ±1	L3	⊖
SRAP-M-CA1-BB270-1-A-TP20	94	82	30	-	M5	112.7	80	74.5	7.8	148	120	80	24
SRAP-M-CA1-BB270-1-A-TP20-Ex2										147			22
SRAP-M-CA1-GR270-1-A-TM20										148			24
SRAP-M-CA1-GR270-1-A-TP20										147			22
SRAP-M-CA1-GR270-1-A-TP20-Ex2										148			24
SRAP-M-CA1-YB270-1-A-TM-20										147			22
SRAP-M-CA1-YB270-1-A-TP-20										148			24
SRAP-M-CA1-YB270-1-A-TP-20-Ex2													
SRAP-M-CA1-GR270-1-A-T2P20													
SRAP-M-CA1-GR270-1-A-T2P20-Ex2													
SRAP-M-CA1-270-1-A-T2P20													
SRAP-M-CA1-270-1-A-T2P20-Ex2													
SRAP-M-CA1-270-1-A-T2P20-Ex2													

# Sensor boxes SRAP, analogue

Technical data

Ordering data – Sensor boxes SRAP, analogue without explosion protection			
	Position indicator	Part No.	Type
	Blue/black	568236	SRAP-M-CA1-BB270-1-A-TP20
	Red/green	568238	SRAP-M-CA1-GR270-1-A-TM20
	Red/green	568239	SRAP-M-CA1-GR270-1-A-TP20
	Yellow/black	568242	SRAP-M-CA1-YB270-1-A-TM20
	Yellow/black	568243	SRAP-M-CA1-YB270-1-A-TP20
	Red/green	568246	SRAP-M-CA1-GR270-1-A-T2P20
	No indicator	570527	SRAP-M-CA1-270-1-A-T2P20

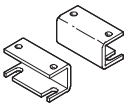
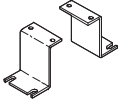
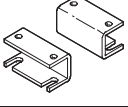
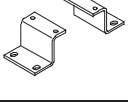



Ordering data – Sensor boxes SRAP, analogue with explosion protection			
	Position indicator	Part No.	Type
	Blue/black	568237	SRAP-M-CA1-BB270-1-A-TP20-Ex2
	Red/green	568241	SRAP-M-CA1-GR270-1-A-TP20-Ex2
	Yellow/black	568245	SRAP-M-CA1-YB270-1-A-TP20-Ex2
	Red/green	568247	SRAP-M-CA1-GR270-1-A-T2P20-Ex2
	No indicator	570528	SRAP-M-CA1-270-1-A-T2P20-Ex2



# Sensor boxes SRAP, analogue

Accessories

**FESTO**

Dimensions and ordering data			
	Brief description	Part No.	Type
<b>Adapter kit</b>			
	Adapter kit for DRD/DRE, DAPS and DFPB, shaft height 20 mm, hole patterns 80x30 mm	<b>568275</b>	<b>DASB-P1-HA-SB</b>
	Adapter kit for third-party drives, shaft height 50 mm, hole patterns 130x30 mm	<b>568276</b>	<b>DASB-P1-HL-SB</b>
	Adapter kit for DRD/DRE and DAPS, shaft height 30 mm, hole patterns 80x30 mm	<b>572418</b>	<b>DASB-P1-HB-SB</b>
	Adapter kit for DRD/DRE and DAPS, shaft height 30 mm, hole patterns 130x30 mm	<b>572419</b>	<b>DASB-P1-HC-SB</b>
<b>Couplings</b>			
	Couplings for direct mounting of sensor boxes SRBP/SRAP on quarter turn actuators DFPB. Technical data → Internet: dfpb	<b>568674</b>	<b>DARQ-C-S9</b>
		<b>568675</b>	<b>DARQ-C-S11</b>
		<b>568676</b>	<b>DARQ-C-S14</b>
		<b>568677</b>	<b>DARQ-C-S17</b>
		<b>568678</b>	<b>DARQ-C-S22</b>
		<b>568679</b>	<b>DARQ-C-S27</b>
<b>Cable connector</b>			
	Polymer cable connector M20x1.5	<b>568278</b>	<b>NETC-P-M20-P4</b>
	Metal cable connector M20x1.5	<b>568279</b>	<b>NETC-M-M20-P4</b>

# Product Range and Company Overview

## A Complete Suite of Automation Services

Our experienced engineers provide complete support at every stage of your development process, including: conceptualization, analysis, engineering, design, assembly, documentation, validation, and production.



**Custom Automation Components**  
Complete custom engineered solutions



**Custom Control Cabinets**  
Comprehensive engineering support and on-site services



**Complete Systems**  
Shipment, stocking and storage services

## The Broadest Range of Automation Components

With a comprehensive line of more than 30,000 automation components, Festo is capable of solving the most complex automation requirements.



**Electromechanical**  
Electromechanical actuators, motors, controllers & drives



**Pneumatics**  
Pneumatic linear and rotary actuators, valves, and air supply



**PLCs and I/O Devices**  
PLC's, operator interfaces, sensors and I/O devices

## Supporting Advanced Automation... As No One Else Can!

Festo is a leading global manufacturer of pneumatic and electromechanical systems, components and controls for industrial automation, with more than 12,000 employees in 56 national headquarters serving more than 180 countries. For more than 80 years, Festo has continuously elevated the state of manufacturing with innovations and optimized motion control solutions that deliver higher performing, more profitable automated manufacturing and processing equipment. Our dedication to the advancement of automation extends beyond technology to the education and development of current and future automation and robotics designers with simulation tools, teaching programs, and on-site services.

## Quality Assurance, ISO 9001 and ISO 14001 Certifications

Festo Corporation is committed to supply all Festo products and services that will meet or exceed our customers' requirements in product quality, delivery, customer service and satisfaction.

To meet this commitment, we strive to ensure a consistent, integrated, and systematic approach to management that will meet or exceed the requirements of the ISO 9001 standard for Quality Management and the ISO 14001 standard for Environmental Management.



© Copyright 2008, Festo Corporation. While every effort is made to ensure that all dimensions and specifications are correct, Festo cannot guarantee that publications are completely free of any error, in particular typing or printing errors. Accordingly, Festo cannot be held responsible for the same. For Liability and Warranty conditions, refer to our "Terms and Conditions of Sale", available from your local Festo office. All rights reserved. No part of this publication may be reproduced, distributed, or transmitted in any form or by any means, electronic, mechanical, photocopying or otherwise, without the prior written permission of Festo. All technical data subject to change according to technical update.



Printed on recycled paper at New Horizon Graphic, Inc., FSC certified as an environmentally friendly printing plant.

# Festo North America

## Festo Regional Contact Center

5300 Explorer Drive  
Mississauga, Ontario L4W 5G4  
Canada

### USA Customers:

For ordering assistance,

**Call:** 1.800.99.FESTO (1.800.993.3786)

**Fax:** 1.800.96.FESTO (1.800.963.3786)

**Email:** [customer.service@us.festo.com](mailto:customer.service@us.festo.com)

For technical support,

**Call:** 1.866.GO.FESTO (1.866.463.3786)

**Fax:** 1.800.96.FESTO (1.800.963.3786)

**Email:** [product.support@us.festo.com](mailto:product.support@us.festo.com)

### Canadian Customers:

**Call:** 1.877.GO.FESTO (1.877.463.3786)

**Fax:** 1.877.FX.FESTO (1.877.393.3786)

**Email:** [festo.canada@ca.festo.com](mailto:festo.canada@ca.festo.com)

---

## USA Headquarters

Festo Corporation  
395 Moreland Road  
P.O. Box 18023  
Hauppauge, NY 11788, USA  
[www.festo.com/us](http://www.festo.com/us)

---

## USA Sales Offices

### Appleton

North 922 Tower View Drive, Suite N  
Greenville, WI 54942, USA

### Boston

120 Presidential Way, Suite 330  
Woburn, MA 01801, USA

### Chicago

1441 East Business Center Drive  
Mt. Prospect, IL 60056, USA

### Dallas

1825 Lakeway Drive, Suite 600  
Lewisville, TX 75057, USA

### Detroit – Automotive Engineering Center

2601 Cambridge Court, Suite 320  
Auburn Hills, MI 48326, USA

### New York

395 Moreland Road  
Hauppauge, NY 11788, USA

### Silicon Valley

4935 Southfront Road, Suite F  
Livermore, CA 94550, USA

## United States



**USA Headquarters, East:** Festo Corp., 395 Moreland Road, Hauppauge, NY 11788

Phone: 1.631.435.0800; Fax: 1.631.435.8026;

Email: [info@festo-usa.com](mailto:info@festo-usa.com)

[www.festo.com/us](http://www.festo.com/us)

## Canada



**Headquarters:** Festo Inc., 5300 Explorer Drive, Mississauga, Ontario L4W 5G4

Phone: 1.905.624.9000; Fax: 1.905.624.9001;

Email: [festo.canada@ca.festo.com](mailto:festo.canada@ca.festo.com)

[www.festo.ca](http://www.festo.ca)

## Mexico



**Headquarters:** Festo Pneumatic, S.A., Av. Ceylán 3, Col. Tequesquahuac,  
54020 Tlalneantla, Edo. de México

Phone: 011 52 [55] 53 21 66 00; Fax: 011 52 [55] 53 21 66 65;

Email: [festo.mexico@mx.festo.com](mailto:festo.mexico@mx.festo.com)

[www.festo.com/mx](http://www.festo.com/mx)

---

## Central USA

Festo Corporation  
1441 East Business  
Center Drive  
Mt. Prospect, IL 60056, USA  
Phone: 1.847.759.2600  
Fax: 1.847.768.9480



## Western USA

Festo Corporation  
4935 Southfront Road,  
Suite F  
Livermore, CA 94550, USA  
Phone: 1.925.371.1099  
Fax: 1.925.245.1286



---

## Festo Worldwide

Argentina Australia Austria Belarus Belgium Brazil Bulgaria Canada Chile China Colombia Croatia Czech Republic Denmark  
Estonia Finland France Germany Great Britain Greece Hong Kong Hungary India Indonesia Iran Ireland Israel Italy Japan Latvia  
Lithuania Malaysia Mexico Netherlands New Zealand Norway Peru Philippines Poland Romania Russia Serbia Singapore  
Slovakia Slovenia South Africa South Korea Spain Sweden Switzerland Taiwan Thailand Turkey Ukraine United States Venezuela

[www.festo.com](http://www.festo.com)