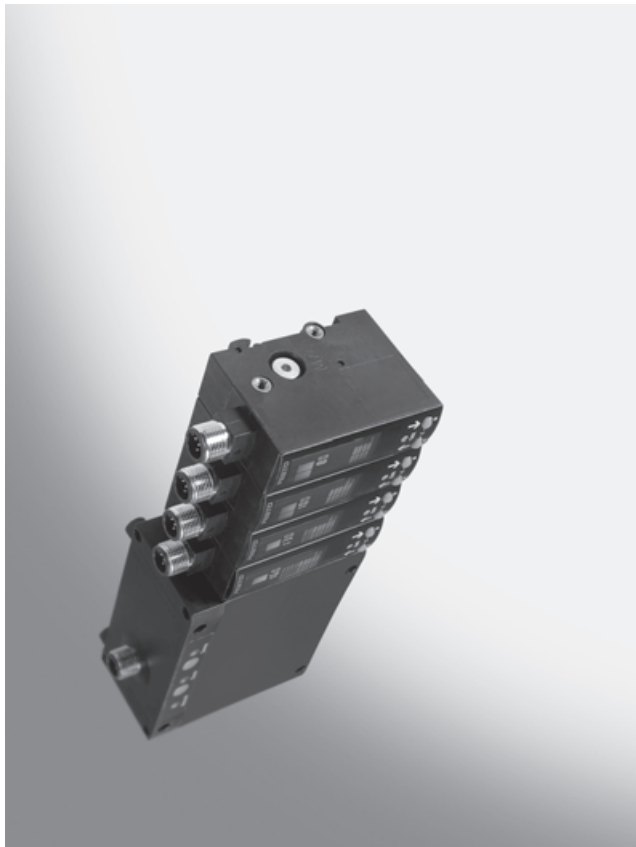


Air gap sensors SOPA

Product range overview



- Sensing range 20 ... 200 μm
- Switch outputs 2x PNP or 2x NPN
- Sensing of two distance values possible
- Integrated air jet function
- Two-colour LCD display
- 2 distance thresholds, for teach-in

Detailed product information

➔ www.festo.com/catalogue/sopa

Key features

General

Lightweight, compact and highly precise, this pneumatic solution offers impressive scope for integration: SOPA features a control module, compressed air regulation, measurement air switch-off and air jet function as well as up to four measuring modules. All in all, an attractively priced solution for low tolerances.

Precise

The air gap sensor SOPA senses exactly in the μm range whether the workpiece is lying flat or resting against other workpieces before clamping and whether the machining tool is exactly aligned on the spindle. Two different distance values can be sensed with one measuring module. The solution for two-stage workpiece machining with different surface finishes.

Easy to use

Lightweight, compact and simple into the bargain: thanks to parameterisation via teach-in or numerical setting using three buttons. Simple assembly and commissioning thanks to the inclusion of virtually unregulated compressed air and an integrated air jet function that needs no additional peripheral devices.

Reliable and flexible

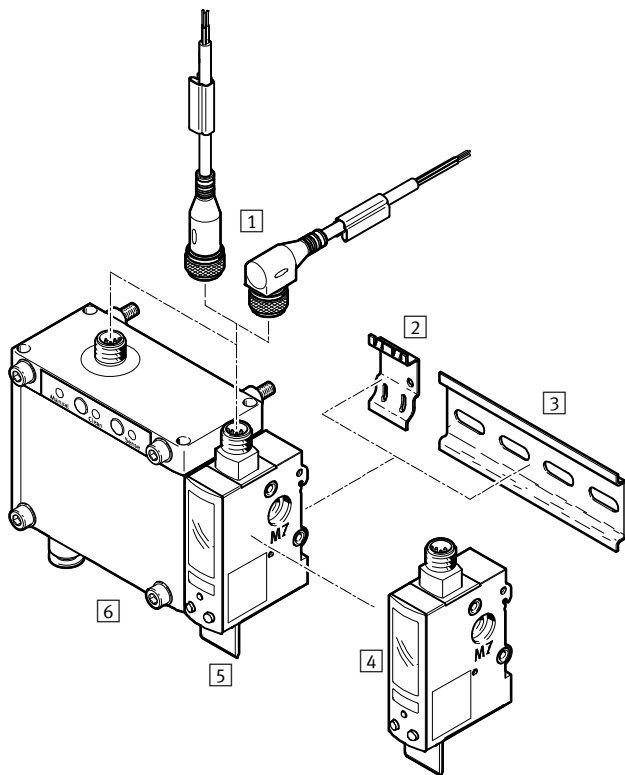
The multi-coloured LCD display with clear operating status indication ensures maximum reliability, while selectable monitoring points (1 to 4) and further functions make the application extremely flexible.

Air gap sensors SOPA

Peripherals overview

FESTO

Peripherals overview





Accessories

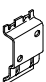
1	Connecting cable for switch output
2	Adapter plate SXE3-W (2 included in scope of delivery with SOPA-...-W-...)
3	Mounting rail to DIN EN 60715
4	Sensor module SOPA-M1-...
5	Inscription label holder SXE3 (included in scope of delivery)
6	Control module with one sensor module SOPA-CM1-...

Ordering data – Connecting cables M12x1

Technical data → Internet: nebu

	Number of wires	Cable length [m]	Part No.	Type
Straight socket				
	4	2.5	550326	NEBU-M12G5-K-2.5-LE4
		5	541328	NEBU-M12G5-K-5-LE4
Angled socket				
	4	2.5	550325	NEBU-M12W5-K-2.5-LE4
		5	541329	NEBU-M12W5-K-5-LE4

Ordering data – Adapter plate

	Part No.	Type
	540214	SXE3-W

Air gap sensors SOPA

Type codes

SOPA - CM1 H - R1 - H Q6 - 2P - M12 - E1

Function

SOPA	Air gap sensor for contact and distance monitoring via LCD display
------	--

Modules

CM1	Control module with one sensor module
CM2	Control module with two sensor modules, pneumatically interlinked
CM3	Control module with three sensor modules, pneumatically interlinked
CM4	Control module with four sensor modules, pneumatically interlinked
M1	Sensor module

Manual override for control module

H	With manual override
---	----------------------

Distance sensing range

R1	20 ... 200 µm
----	---------------

Type of mounting

H	H-rail mounting/through-hole
W	Additional wall mounting

Pneumatic connection

Q6	Push-in connector QS-6
----	------------------------

Electrical output

2P	2 switch outputs PNP
2N	2 switch outputs NPN

Electrical connection

M12	Plug M12x1, A-coded
-----	---------------------

Electrical accessories

E1	Straight socket, cable 2.5 m
E2	Straight socket, cable 5 m
E3	Angled socket, cable 2.5 m
E4	Angled socket, cable 5 m

Air gap sensors SOPA

Technical data

FESTO

Technical data			
Type	SOPA-M1-...	SOPA-CM...-...-H...	SOPA-CM...-...-W...
Sensing range	[µm]	20 ... 200	
Repetition accuracy of switching point ¹⁾		± 2.5 µm: sensing range 30 µm to 150 µm ± 5µm: sensing range 20 µm to 200 µm	
Setting options		Teach-in via display and buttons	
Protection against manipulation		Electronic lock	
Type of display		Multi-coloured illuminated LCD	
Type of mounting		Alternatively: Via H-rail Via through-holes Via wall/surface bracket ²⁾	Alternatively: Via H-rail Via through-holes Via wall/surface bracket ³⁾
Sensing principle		Pneumatic	
Pneumatic connection		QS-6	
Operating voltage range	[V DC]	15 ... 30	22.8 ... 26.4
Max. output current	[mA]	100	
Electrical connection		Plug M12x1, 5-pin, round design to EN 60947-5-2	
Protection against short circuit		Pulsed	
Protection against polarity reversal		For all electrical connections	
Protection class		IP65 to IEC 60529	

1) Under constant operating conditions (temperature and supply pressure) and nominal measuring nozzle diameter (2 mm).

2) Adapter plate SXE3 must be ordered separately as an accessory → 2.

3) 2 adapter plates SXE3-W included in scope of delivery.

Operating and environmental conditions		
Type	SOPA-M1-...	SOPA-CM...-...
Operating pressure	[bar]	-
Supply pressure	[bar]	0.8 ... 1.6
Operating medium		Compressed air in accordance with ISO 8573-1:2010 [7:4:4]
Note on operating/pilot medium		Operation with lubricated medium possible (in which case lubricated operation will always be required)
Ambient temperature	[°C]	0 ... +50
CE mark (see declaration of conformity)		In accordance with EU EMC directive
Certification		RCM trademark
		c UL us - Recognized (OL)

Weight					
	SOPA-M1-...	SOPA-CM1-...	SOPA-CM2...	SOPA-CM3...	SOPA-CM4...
Product weight	[g]	60	510	570	630
				630	690

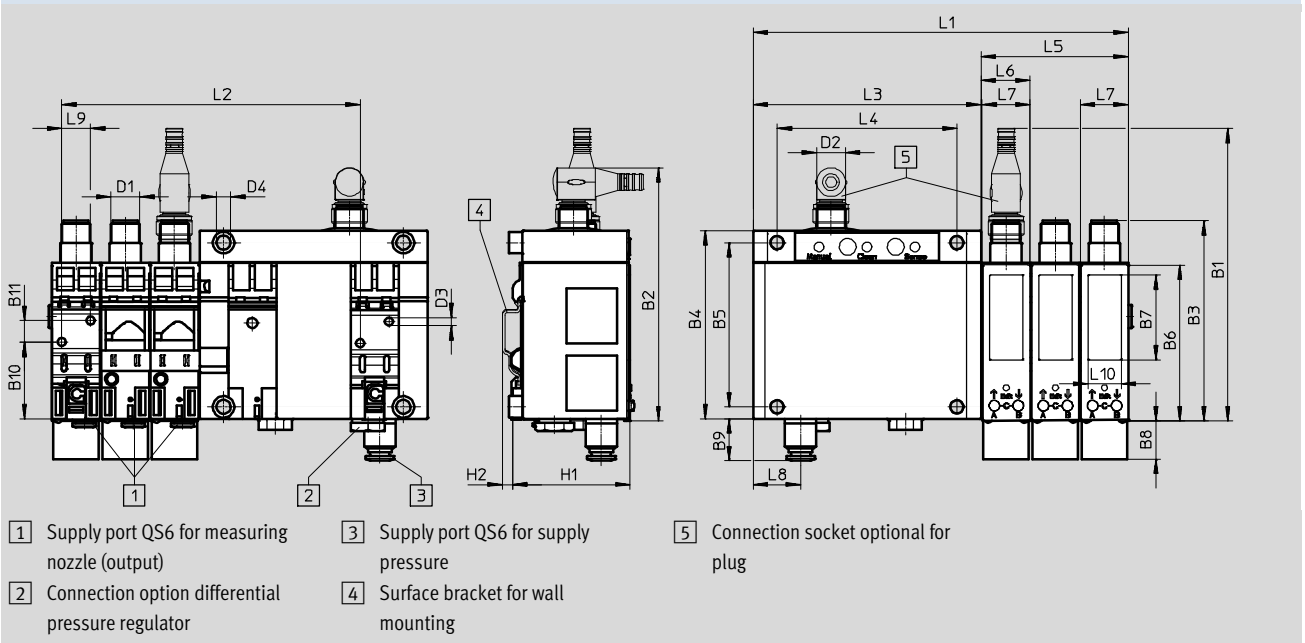
Materials	
Housing	Reinforced polyamide
Note on materials	Free of copper and PTFE
	Conforms to RoHS

Air gap sensors SOPA

Technical data

Dimensions

Download CAD data → www.festo.com



	B1	B2	B3	B4	B5	B6	B7	B8	B9	B10	B11	D1	D2	D3	D4
SOPA-CM1H-...															
SOPA-CM2H-...															
SOPA-CM3H-...	122	106	82.9	78.5	68.5	65	35.4	16.8	17.4	32	9	M12x1	M12x1	3.4	5.5
SOPA-CM4H-...															
SOPA-...															

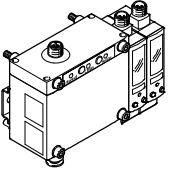

	H1	H2	L1	L2	L3	L4	L5	L6	L7	L8	L9	L10
SOPA-CM1H-...			115.5	83.5				20.5				
SOPA-CM2H-...			136	104			41					
SOPA-CM3H-...	49	4.2	156.5	124.5	95	75	61.5	20.5	20	19.8	12	14
SOPA-CM4H-...			177	145			82					
SOPA-...			95+(n x 20.5)	83.5+(n-1) x 20.5			n x 20.5					

n = Number of sensor modules

Air gap sensors SOPA

Technical data

FESTO

Ordering data						
Version	Type of mounting	Number of sensor modules	Switch output PNP		Switch output NPN	
			Part No.	Type	Part No.	Type
Control module with sensor modules						
	Via H-rail	1	552130	SOPA-CM1H-R1-HQ6-2P-M12	552134	SOPA-CM1H-R1-HQ6-2N-M12
		2	552131	SOPA-CM2H-R1-HQ6-2P-M12	552135	SOPA-CM2H-R1-HQ6-2N-M12
		3	552132	SOPA-CM3H-R1-HQ6-2P-M12	552136	SOPA-CM3H-R1-HQ6-2N-M12
		4	552133	SOPA-CM4H-R1-HQ6-2P-M12	552137	SOPA-CM4H-R1-HQ6-2N-M12
	Via wall/surface bracket ¹⁾	1	552138	SOPA-CM1H-R1-WQ6-2P-M12	552142	SOPA-CM1H-R1-WQ6-2N-M12
		2	552139	SOPA-CM2H-R1-WQ6-2P-M12	552143	SOPA-CM2H-R1-WQ6-2N-M12
		3	552140	SOPA-CM3H-R1-WQ6-2P-M12	552144	SOPA-CM3H-R1-WQ6-2N-M12
		4	552141	SOPA-CM4H-R1-WQ6-2P-M12	552145	SOPA-CM4H-R1-WQ6-2N-M12
Individual sensor module						
	Via H-rail	1	552146	SOPA-M1-R1-HQ6-2P-M12	552147	SOPA-M1-R1-HQ6-2N-M12

1) 2 adapter plates SXE3-W included in scope of delivery.

Air gap sensors SOPA

Ordering data – Modular products



M Mandatory data		O Options		M Mandatory data		O Options		
Module No.	Function	Control module override	Distance sensing range	Pneumatic connection	Electrical connection	Electrical accessories		
549902	Modules		Type of mounting		Electrical output			
	SOPA	CM1 CM2 CM3 CM4 M1	H	R1	H W	Q6	2P 2N	M12
Ordering example								
549902	SOPA	- M1	- R1	- H	Q6	- 2P	- M12	+ E3

Ordering table			Condi- tions	Code	Enter code
M	Module No.	549 902			
	Function	Air gap sensor for contact and distance monitoring with LCD display		SOPA	SOPA
	Modules	Control module with one sensor module		-CM1	
		Control module with two sensor modules, pneumatically interlinked		-CM2	
		Control module with three sensor modules, pneumatically interlinked		-CM3	
		Control module with four sensor modules, pneumatically interlinked		-CM4	
		Sensor module		-M1	
O	Control module override	With manual override for control module	1	H	
M	Distance sensing range [µm]	20 ... 200		-R1	-R1
	Type of mounting	H-rail mounting/through-hole		-H	
		Additional wall mounting		-W	
	Pneumatic connection	Push-in connector 6 mm		Q6	Q6
	Electrical output	2 switch outputs PNP		-2P	
		2 switch outputs NPN		-2N	
	Electrical connection	Plug M12, A-coded		-M12	-M12
O	Electrical accessories	Straight socket, cable 2.5 m		+E1	
		Straight socket, cable 5 m		+E2	
		Angled socket, cable 2.5 m		+E3	
		Angled socket, cable 5 m		+E4	

1 H Not with module M1 (sensor module)

Transfer order code

549902 SOPA - [] - [] - R1 - [] Q6 - [] - M12 + []

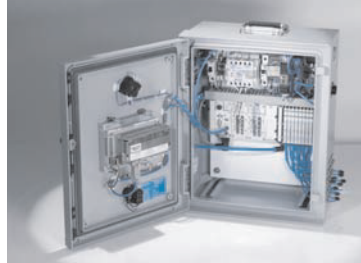
Product Range and Company Overview

A Complete Suite and Company Overview

Our experienced engineers provide complete support at every stage of your development process, including: conceptualization, analysis, engineering, design, assembly, documentation, validation, and production.



Custom Automation Components
Complete custom engineered solutions



Custom Control Cabinets
Comprehensive engineering support and on-site services



Complete Systems
Shipment, stocking and storage services

The Broadest Range of Automation Components

With a comprehensive line of more than 30,000 automation components, Festo is capable of solving the most complex automation requirements.



Electromechanical
Electromechanical actuators, motors, controllers & drivers



Pneumatics
Pneumatic linear and rotary actuators, valves, and air supply



PLCs and I/O Devices
PLC's, operator interfaces, sensors and I/O devices

Supporting Advanced Automation... As No One Else Can!

Festo is a leading global manufacturer of pneumatic and electromechanical systems, components and controls for industrial automation, with more than 16,000 employees in 60 national headquarters serving more than 180 countries. For more than 80 years, Festo has continuously elevated the state of manufacturing with innovations and optimized motion control solutions that deliver higher performing, more profitable automated manufacturing and processing equipment. Our dedication to the advancement of automation extends beyond technology to the education and development of current and future automation and robotics designers with simulation tools, teaching programs, and on-site services.

Quality Assurance, ISO 9001 and ISO 14001 Certifications

Festo Corporation is committed to supply all Festo products and services that will meet or exceed our customers' requirements in product quality, delivery, customer service and satisfaction.

To meet this commitment, we strive to ensure a consistent, integrated, and systematic approach to management that will meet or exceed the requirements of the ISO 9001 standard for Quality Management and the ISO 14001 standard for Environmental Management.

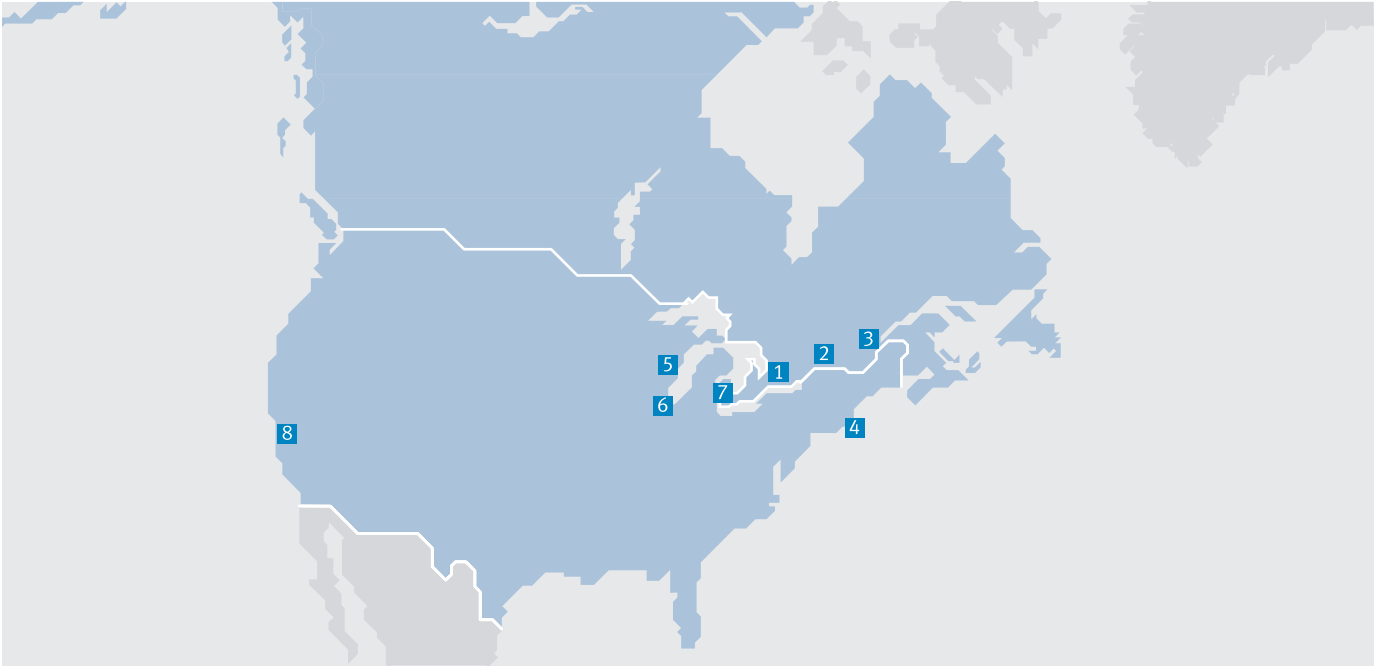


© Copyright 2013, Festo Corporation. While every effort is made to ensure that all dimensions and specifications are correct, Festo cannot guarantee that publications are completely free of any error, in particular typing or printing errors. Accordingly, Festo cannot be held responsible for the same. For Liability and Warranty conditions, refer to our "Terms and Conditions of Sale", available from your local Festo office. All rights reserved. No part of this publication may be reproduced, distributed, or transmitted in any form or by any means, electronic, mechanical, photocopying or otherwise, without the prior written permission of Festo. All technical data subject to change according to technical update.



Printed on recycled paper at New Horizon Graphic, Inc., FSC certified as an environmental friendly printing plant.

Festo North America



**1 Festo Canada
Headquarters
Festo Inc.**
5300 Explorer Drive
Mississauga, ON
L4W 5G4

2 Montréal
5600, Trans-Canada
Pointe-Claire, QC
H9R 1B6

3 Québec City
2930, rue Watt#117
Québec, QC
G1X 4G3



**4 Festo United States
Headquarters
Festo Corporation**
395 Moreland Road
Hauppauge, NY
11788

5 Appleton
North 922 Tower View Drive, Suite N
Greenville, WI
54942

7 Detroit
1441 West Long Lake Road
Troy, MI
48098

6 Chicago
85 W Algonquin - Suite 340
Arlington Heights, IL
60005

8 Silicon Valley
4935 Southfront Road, Suite F
Livermore, CA
94550

Festo Regional Contact Center

Canadian Customers

Commercial Support:
Tel: 1 877 GO FESTO (1 877 463 3786)
Fax: 1 877 FX FESTO (1 877 393 3786)
Email: festo.canada@ca.festo.com

Technical Support:
Tel: 1 866 GO FESTO (1 866 463 3786)
Fax: 1 877 FX FESTO (1 877 393 3786)
Email: technical.support@ca.festo.com

USA Customers

Commercial Support:
Tel: 1 800 99 FESTO (1 800 993 3786)
Fax: 1 800 96 FESTO (1 800 963 3786)
Email: customer.service@us.festo.com

Technical Support:
Tel: 1 866 GO FESTO (1 866 463 3786)
Fax: 1 800 96 FESTO (1 800 963 3786)
Email: product.support@us.festo.com