

Proximity sensors SMPO-8E, for T-slot, pneumatic

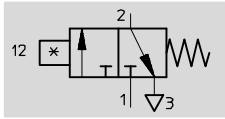


Proximity sensors SMPO-8E, for T-slot, pneumatic

Technical data

Function
3/2-way valve,
normally closed

- Pneumatic proximity sensor
- Magnetic measuring principle



Design	
Constructional design	For T-slot
Type of mounting	Insertable in the slot from above
	Via through-holes
	Via accessories
Connection direction	Lateral
Reproducibility of switching point ¹⁾	[mm] ±0.2
Switching status display	Optical

1) Only applicable to drives secured against rotation

Technical data	
Switching element function	3/2-way valve, normally closed
Operating medium	Compressed air in accordance with ISO 8573-1:2010 [6:4:4]
Note on operating/pilot medium	Operation with lubricated medium not possible
Operating pressure	[bar] 2 ... 8
Switch-on time	[ms] 22
Switch-off time	[ms] 52
Pneumatic connection	Female thread M5
Protection class	IP65

Operating and environmental conditions	
Ambient temperature	[°C] -15 ... +60
Corrosion resistance class CRC ¹⁾	2

1) Corrosion resistance class CRC 2 to Festo standard FN 940070
Moderate corrosion stress. Indoor applications in which condensation may occur. External visible parts with primarily decorative requirements for the surface and which are in direct contact with the ambient atmosphere typical for industrial applications.

Materials	
Housing	Anodised aluminium
	High-alloy steel
	PA
Note on materials	Free of copper and PTFE
	RoHS-compliant

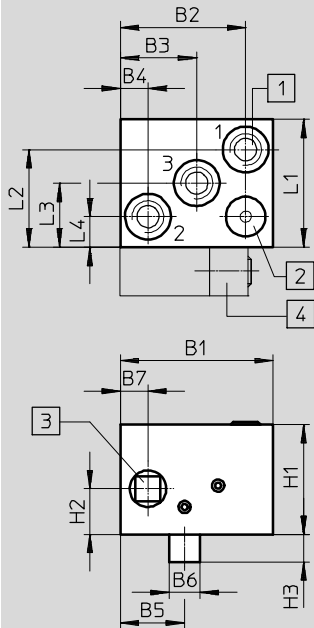
Product weights [g]	
Pneumatic proximity sensor	11

Proximity sensors SMPO-8E, for T-slot, pneumatic

Technical data

Dimensions

Download CAD data → www.festo.com



- 1 M5 for barbed fitting
- 2 Yellow LED
- 3 Max. tightening torque 0.6 Nm (NW 2.5)
- 4 Mounting kit SMB-8E

Dimensions

	B1	B2	B3	B4	B5 ±0.3	B6 ±0.05	B7 ±0.2	H1	H2	H3	L1	L2	L3	L4
SMPO-8E	25	20.5	12.5	4.5	10.5	5.1	4.5	18	7.5	4.5	21	16	10.5	5

Ordering data

	Pneumatic connection	Part No.	Type
	3/2-way valve, normally closed	178563	SMPO-8E
	Female thread M5		

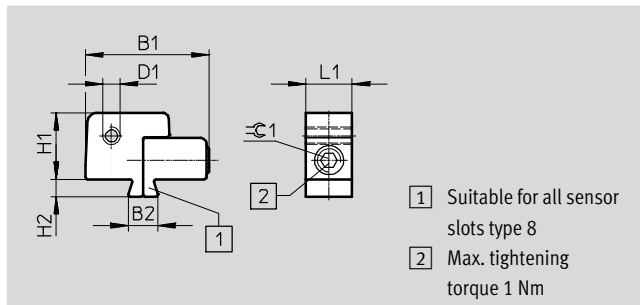
Proximity sensors SMPO-8E, for T-slot, pneumatic

Accessories



Mounting kit SMB-8E

Material:
Profile: Anodised aluminium,
RoHS-compliant
Screws: High-alloy stainless steel



Dimensions and ordering data

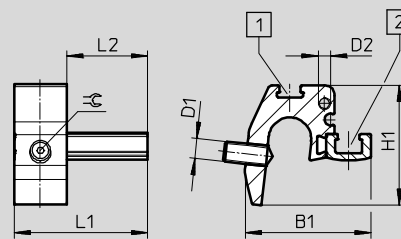
For piston \varnothing	B1	B2	D1	H1	H2	L1	$\approx\text{C}$	Part No.	Type
	+0.5/-1	-0.2			+0.2	± 0.2			
10 ... 125	21.5	5.1	M3	11.5	3	8	2.5	178230	SMB-8E

Mounting SMBZ-8-...

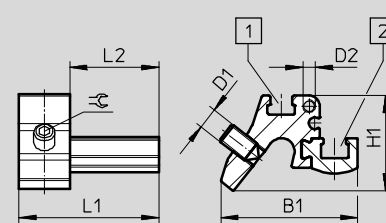
Materials:
Rail: Anodised wrought aluminium alloy
Screws: High-alloy stainless steel
Free of copper and PTFE
RoHS-compliant



SMBZ-8-32/100



SMBZ-8-125/320



1 Slot for inscription label

2 Slot for proximity sensor

Dimensions and ordering data

For piston \varnothing	B1	D1	D2	H1	L1	L2	$\approx\text{C}$	Part No.	Type
32 ... 100	31	M5	M3	30	33	20	1.5	537806	SMBZ-8-32/100
125 ... 320	32.3			22			2.5	537808	SMBZ-8-125/320

Ordering data

		[mm]	Technical data → Internet: quick star	
			Part No.	Type
	Push-in fitting with connecting thread M5 for tubing O.D.	3	153302	QSM-M5-3
		4	153304	QSM-M5-4
		6	153306	QSM-M5-6
	Push-in L-fitting with connecting thread M5 for tubing O.D.	3	153331	QSML-M5-3
		4	153333	QSML-M5-4
		6	153335	QSML-M5-6

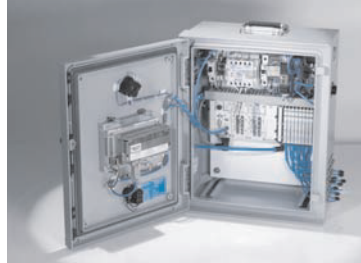
Product Range and Company Overview

A Complete Suite and Company Overview

Our experienced engineers provide complete support at every stage of your development process, including: conceptualization, analysis, engineering, design, assembly, documentation, validation, and production.



Custom Automation Components
Complete custom engineered solutions



Custom Control Cabinets
Comprehensive engineering support and on-site services



Complete Systems
Shipment, stocking and storage services

The Broadest Range of Automation Components

With a comprehensive line of more than 30,000 automation components, Festo is capable of solving the most complex automation requirements.



Electromechanical
Electromechanical actuators, motors, controllers & drivers



Pneumatics
Pneumatic linear and rotary actuators, valves, and air supply



PLCs and I/O Devices
PLC's, operator interfaces, sensors and I/O devices

Supporting Advanced Automation... As No One Else Can!

Festo is a leading global manufacturer of pneumatic and electromechanical systems, components and controls for industrial automation, with more than 16,000 employees in 60 national headquarters serving more than 180 countries. For more than 80 years, Festo has continuously elevated the state of manufacturing with innovations and optimized motion control solutions that deliver higher performing, more profitable automated manufacturing and processing equipment. Our dedication to the advancement of automation extends beyond technology to the education and development of current and future automation and robotics designers with simulation tools, teaching programs, and on-site services.

Quality Assurance, ISO 9001 and ISO 14001 Certifications

Festo Corporation is committed to supply all Festo products and services that will meet or exceed our customers' requirements in product quality, delivery, customer service and satisfaction.

To meet this commitment, we strive to ensure a consistent, integrated, and systematic approach to management that will meet or exceed the requirements of the ISO 9001 standard for Quality Management and the ISO 14001 standard for Environmental Management.

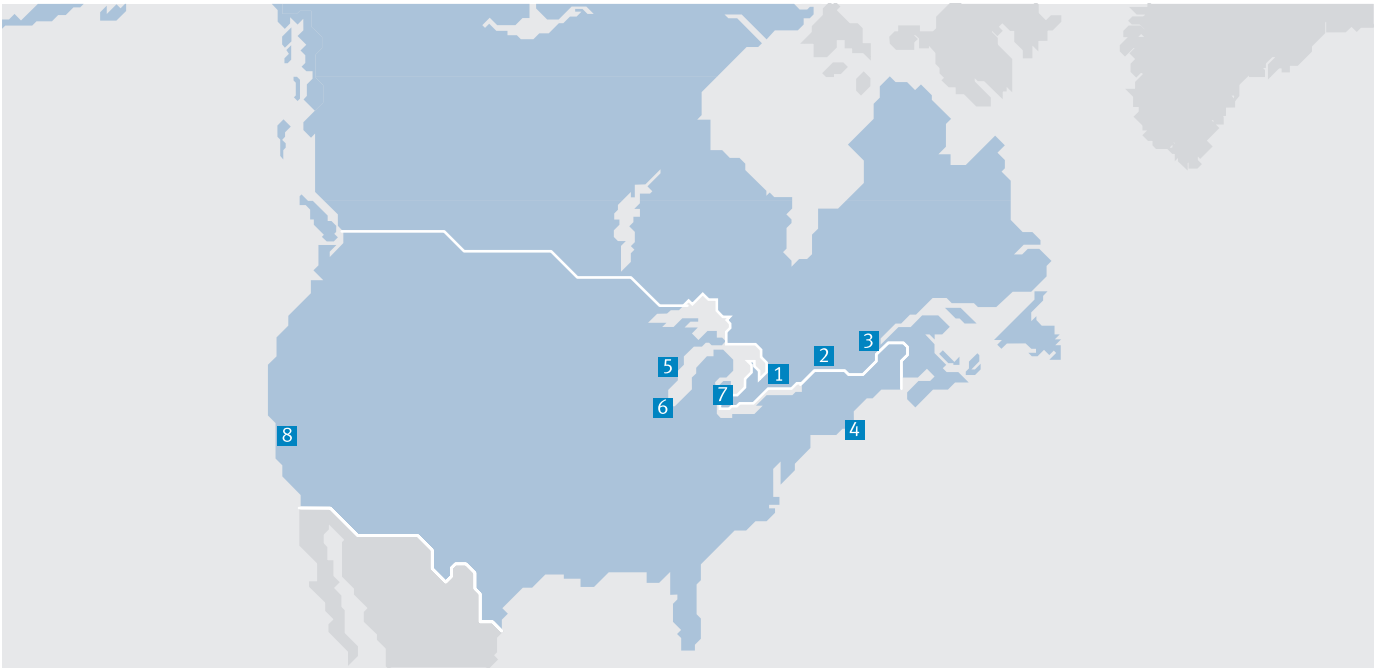


© Copyright 2013, Festo Corporation. While every effort is made to ensure that all dimensions and specifications are correct, Festo cannot guarantee that publications are completely free of any error, in particular typing or printing errors. Accordingly, Festo cannot be held responsible for the same. For Liability and Warranty conditions, refer to our "Terms and Conditions of Sale", available from your local Festo office. All rights reserved. No part of this publication may be reproduced, distributed, or transmitted in any form or by any means, electronic, mechanical, photocopying or otherwise, without the prior written permission of Festo. All technical data subject to change according to technical update.



Printed on recycled paper at New Horizon Graphic, Inc., FSC certified as an environmental friendly printing plant.

Festo North America



**1 Festo Canada
Headquarters
Festo Inc.**
5300 Explorer Drive
Mississauga, ON
L4W 5G4

2 Montréal
5600, Trans-Canada
Pointe-Claire, QC
H9R 1B6

3 Québec City
2930, rue Watt#117
Québec, QC
G1X 4G3



**4 Festo United States
Headquarters
Festo Corporation**
395 Moreland Road
Hauppauge, NY
11788

5 Appleton
North 922 Tower View Drive, Suite N
Greenville, WI
54942

7 Detroit
1441 West Long Lake Road
Troy, MI
48098

6 Chicago
85 W Algonquin - Suite 340
Arlington Heights, IL
60005

8 Silicon Valley
4935 Southfront Road, Suite F
Livermore, CA
94550

Festo Regional Contact Center

Canadian Customers

Commercial Support:
Tel: 1 877 GO FESTO (1 877 463 3786)
Fax: 1 877 FX FESTO (1 877 393 3786)
Email: festo.canada@ca.festo.com

Technical Support:
Tel: 1 866 GO FESTO (1 866 463 3786)
Fax: 1 877 FX FESTO (1 877 393 3786)
Email: technical.support@ca.festo.com

USA Customers

Commercial Support:
Tel: 1 800 99 FESTO (1 800 993 3786)
Fax: 1 800 96 FESTO (1 800 963 3786)
Email: customer.service@us.festo.com

Technical Support:
Tel: 1 866 GO FESTO (1 866 463 3786)
Fax: 1 800 96 FESTO (1 800 963 3786)
Email: product.support@us.festo.com