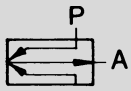


Non-Contact Pneumatic Sensors

Reflex Sensors

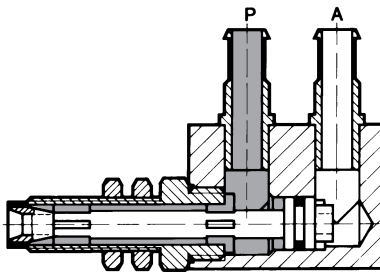
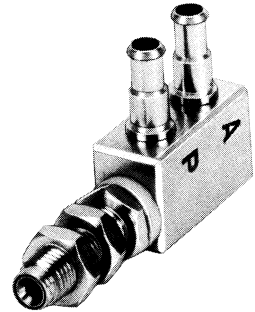
Reflex Sensor Type RML-4.8-S



The reflex sensor is used as a non-contact signaling device. It is capable of sensing indicating instruments, monitoring press and stamping dies (sheet gauge, perforations, layering), including edge-guiding and magazine control, metering and measuring.

High pollution, noise interference, explosive atmosphere, total darkness or the transparency or magnetism of objects do not affect the functioning of reflex sensors.

The reflex sensor should be supplied with filtered, non-lubricated compressed air at port P. If the jet, constantly emitting air, is disturbed by an object in front of the sensor, a signal pressure ≥ 0.0073 psi / 0.5 mbar appears at outlet A. This signal pressure is then converted to a higher pressure by amplifiers.

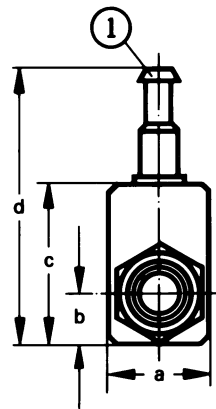
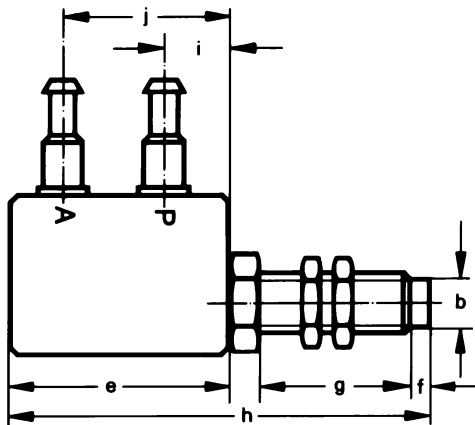


P = Supply
A = Outlet

Order Number	Part No./Type	9849 RML-4.8-S
Medium		Compressed air (filtered, unlubricated)
Design		Reflex nozzle, no moving parts
Mounting		M6 x 0.75 with mounting nuts
Mounting Hole Diameter		0.24 in / 6.1 mm
Connection		Barbed fitting for 1/4 in / 4 mm plastic tubing
Supply Pressure Range of P*		1.13 to 3.75 psi / 0.075 to 0.25 bar
Signal Pressure Range, Max.		7.5 psi / 0.5 bar
Signal Pressure Range at A		See graph, next page
Air Consumption at 1.5 psi / 0.1 bar		0.5 scfm / 15 l/min
Materials		Housing: brass, Al. Seals: NBR
Weight		0.024 lb / 0.011 kg

* 14 to 140°F / -10 to +60°C

Type RML-4.8-S



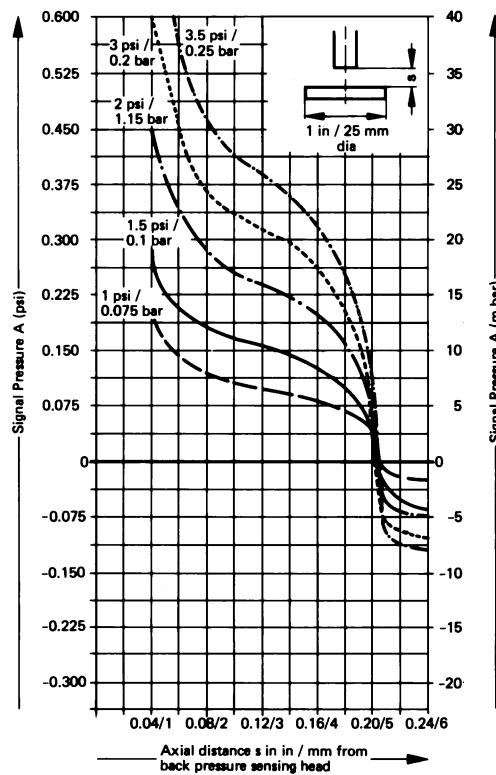
① Barbed fitting for 1/4 in / 4 mm plastic tubing

Dimensions

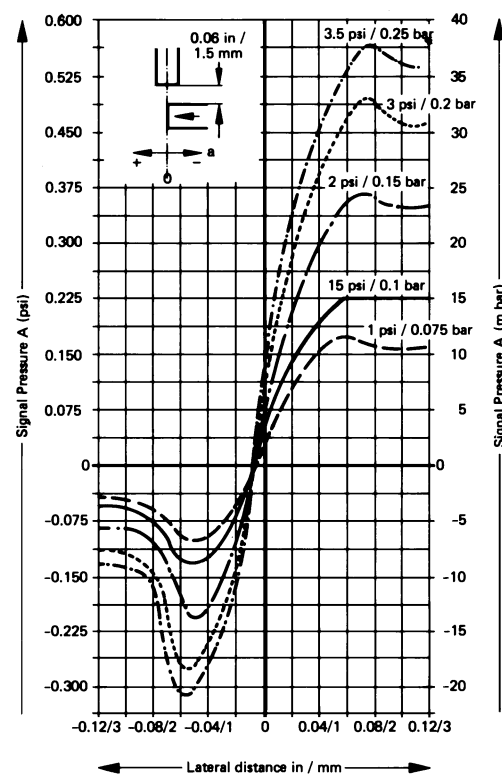
a 0.39 in / 10 mm	f 0.07 in / 2 mm
b 0.19 in / 5 mm	g 0.59 in / 15 mm
c 0.62 in / 16 mm	h 1.65 in / 42 mm
d 1.1 in / 27.5 mm	i 0.19 in / 6.5 mm
e 0.86 in / 22 mm	j 0.64 in / 16.5 mm




Signal Pressure Versus Sensing Distance and Supply Pressure For Type RML-4.8-S

Axial Sensitivity at various pressures



Lateral Sensitivity



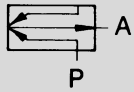
Maximum sensing Distance	Minimum detectible variation	Minimum size of object to be detected (stationary pieces)		
0.19 to 0.21 in / 4.8 to 5.1 mm	0.002 in / 0.05 mm			
		0.15 x 0.10 in / 3.75 x 2.5 mm	0.12 x 0.12 in / 3 x 3 mm	0.12 in / 3 mm

Non-Contact Pneumatic Sensors

Reflex Proximity Sensors

Reflex Sensor

Type RML-5



Reflex Sensors

Type RFL-4

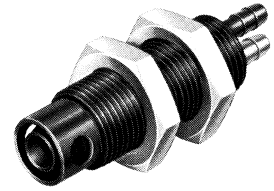
RFL-15

The reflex sensor is used as a non-contact signaling device. It is capable of sensing indicating instruments, monitoring press and stamping dies (sheet gauge, perforations, layering), including edge-guiding and magazine control, metering and measuring. Depending on the type used, a range covering 0.004 to 0.008 in / 0.1 to 0.2 mm can be detected.

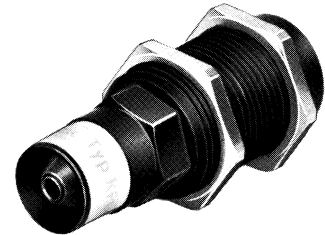
High pollution, noise interference, explosive atmosphere, total darkness or the transparency or magnetism of objects do not affect the functioning of reflex sensors.

The reflex sensor should be supplied with compressed air at port P. The air with a pressure of 1.5 to 3 psi / 0.1 to 0.2 bar must be filtered and free of any water or oil. If the jet, constantly emitting air, is disturbed by an object in front of the sensor, a signal pressure ≥ 0.007 psi / 0.5 mbar appears at outlet A. This signal pressure is then converted to a higher pressure by amplifiers.

Type RML-5



Type RFL-4

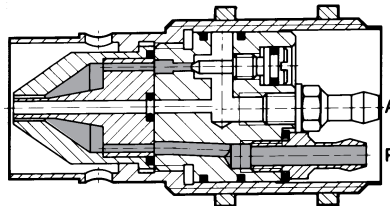


Type RFL-15



Accessories:

Mounting Bracket, see page 199



P = Supply
A = Outlet

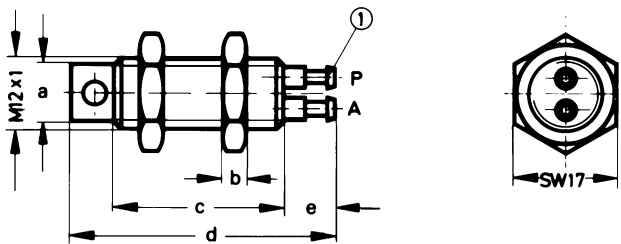
Order Number	Part No./Type	7050 RML-5	3649 RFL-4	7454 RFL-15
Medium		Compressed air (filtered, unlubricated)		
Mounting		M12 x 1 with mounting nuts	M22 x 1 with mounting nuts	
Mounting Hole Diameter		0.5 in / 12.5 mm	0.89 in / 22.5 mm	
Connection		Barbed fitting for 3/16 in / 3 mm tubing	Barbed fitting for 1/4 in / 4 mm tubing	
Supply Pressure Range at P*		1.5 to 3 psi / 0.1 to 0.2 bar		3 to 4.5 psi / 0.2 to 0.3 bar
Supply Pressure Range, Max.		7.5 psi / 0.5 bar		22.5 psi / 1.5 bar
Signal Pressure Range at A		See graph, page 233		
Air Consumption		See graph, page 233		
Ambient Temperature		-40 to 212°F / -40 to 100°C†		
Design		Back pressure nozzle, no moving parts		
Material		Brass	Al, brass	
Weight		0.055 lb / 0.025 kg	0.110 lb / 0.050 kg	0.187 lb / 0.085 kg

* 14 to 140°F / -10 to 60°C

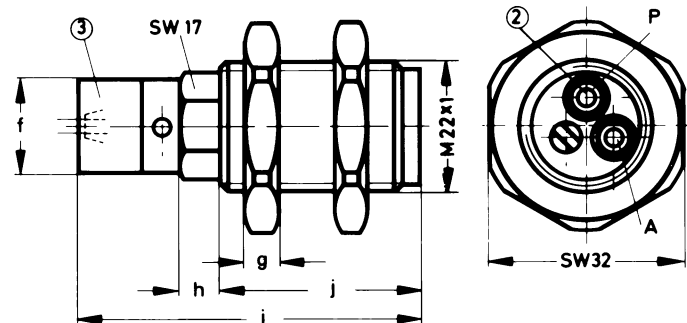
† Depending on tubing used

Type	Nozzle Diameter in / mm	Color Code	Max Sensing Range in / mm	Minimum Detectable Variation in Range in / mm	Minimum Size of Object to be Detected (Stationary Parts)		
					bxh in / mm	bxh in / mm	d in / mm
RML-5	—	None	0.22 / 5.5	0.008 / 0.2	0.12 x 0.4 / 3 x 10	0.32 x 0.4 / 8 x 10	0.14 / 3.5
RFL-4	0.084 / 2.25	Yellow	0.18 / 4.5	0.004 / 0.1	0.12 x 0.8 / 3 x 20	0.32 x 0.8 / 8 x 20	0.12 / 3
RFL-15	—	None	0.61 / 15.5	0.01 / 0.3	—	—	0.8 / 20

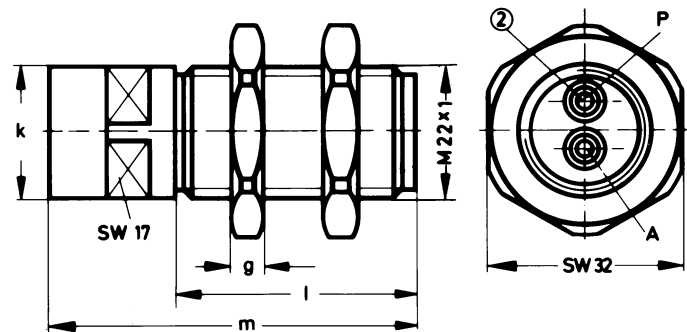
Type RML-5



Type RFL-4



Type RFL-15



Dimensions

- a 0.39 in / 10 mm
- b 0.16 in / 4 mm
- c 1.11 in / 28.3 mm
- d 1.77 in / 45 mm
- e 0.35 in / 9 mm
- f 0.63 in / 16 mm
- g 0.24 in / 6 mm
- h 0.29 in / 7.5 mm
- i 2.28 in / 58 mm
- j 1.32 in / 33.5 mm
- k 0.89 in / 22.5 mm
- l 1.58 in / 40 mm
- m 2.48 in / 63 mm

- ① Barbed fitting for 3/16 in / 3 mm tubing, connection P black, connection A yellow
- ② Barbed fitting for 1/4 in / 4 mm tubing
- ③ Color band

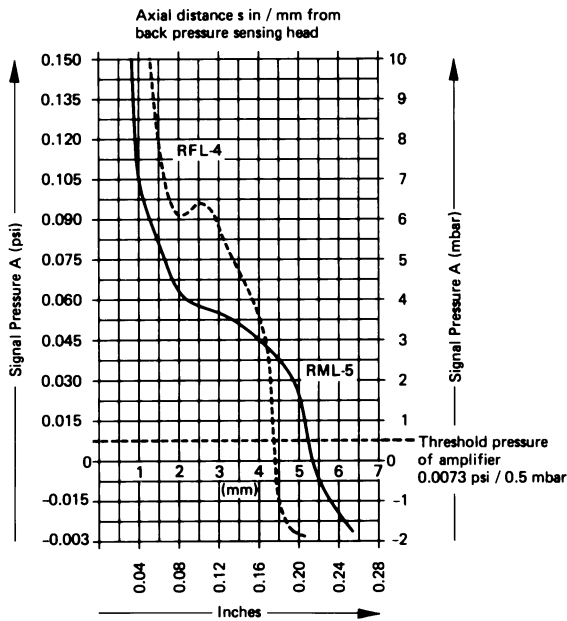
SW = wrench size, mm

Non-Contact Pneumatic Sensors

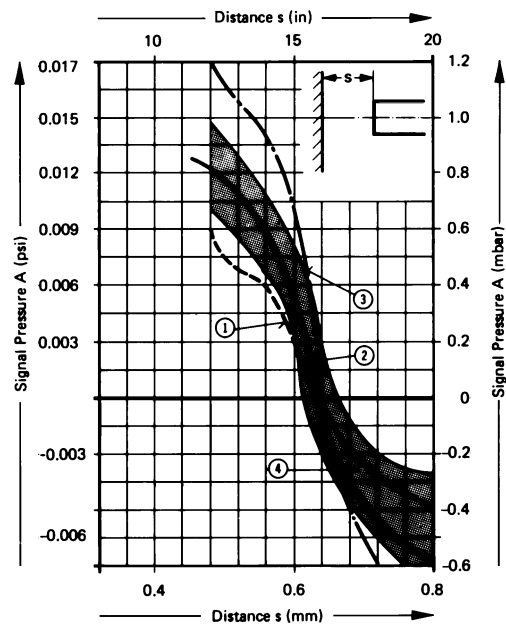
Reflex Proximity Sensors, Operating Characteristics

Signal Pressure Versus Supply Pressure and Nozzle Range For Types RML-5, RFL-4

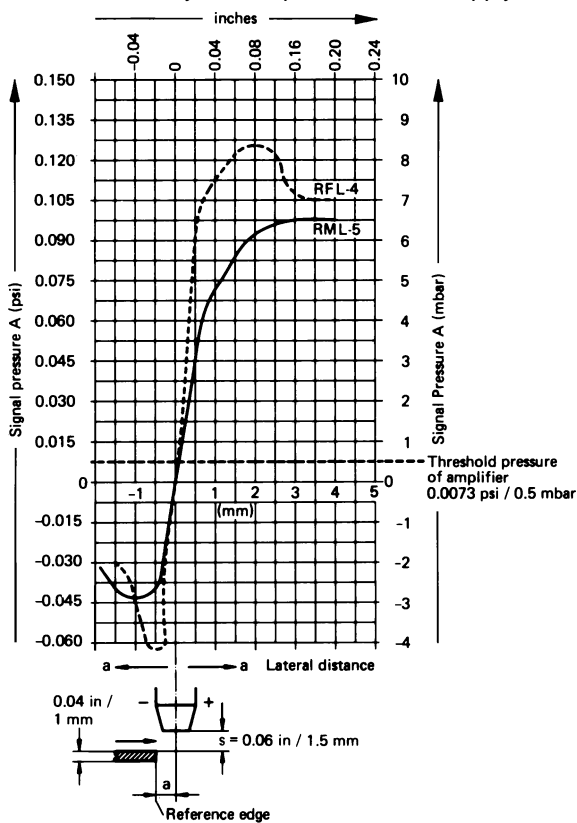
Axial Sensitivity at 2.18 psi / 150 mbar Supply Pressure



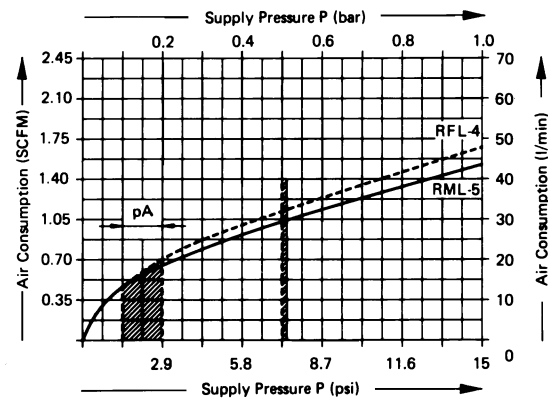
For Type RFL-15



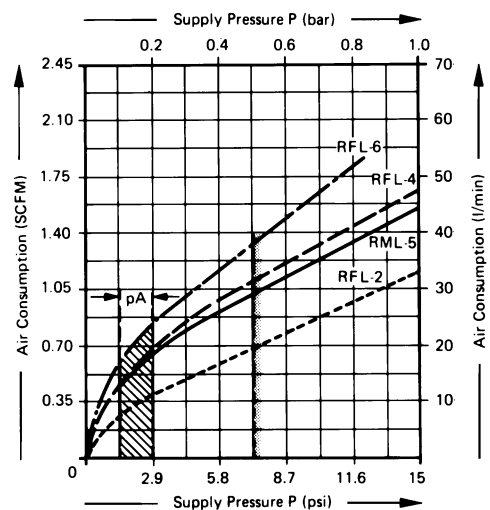
Lateral Sensitivity at 2.18 psi / 150 mbar Supply Pressure



Air Consumption Versus Supply Pressure (Unrestricted Flow) For Types RML-5, RFL-4



For Type RFL-15



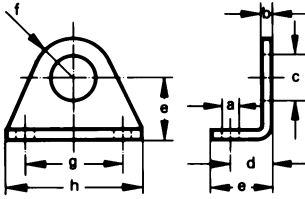
- ① Supply Pressure 2.18 psi / 150 mbar
- ② Supply Pressure 2.9 psi / 200 mbar
- ③ Supply Pressure 4.35 psi / 300 mbar
- ④ Sensing Range for Supply Pressure 2.9 psi / 200 mbar

Mounting Thread M12 x 1:

Foot Mount

Order No.

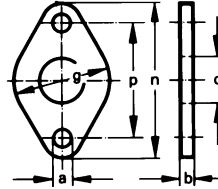
5123 HBN-8/10-1



Flange Mount

Order No.

5129 FBN-8/10

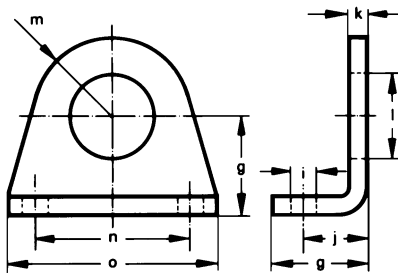


For Mounting Thread M22 x 1:

Foot Mount

Order No.

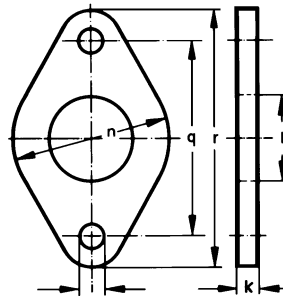
5127 HBN-20/25-1



Flange Mount

Order No.

5131 FBN-20/25



Dimensions

a 0.18 in / 4.5 mm	j 0.67 in / 17 mm
b 0.12 in / 3 mm	k 0.20 in / 5 mm
c 0.48 in / 12.1 mm	l 0.87 in / 22.1 mm
d 0.43 in / 11 mm	m 0.79 in / 20 mm
e 0.63 in / 16 mm	n 1.58 in / 40 mm
f 0.39 in / 10 mm	o 2.13 in / 54 mm
g 0.99 in / 25 mm	p 1.18 in / 30 mm
h 1.38 in / 35 mm	q 1.97 in / 50 mm
i 0.26 in / 6.6 mm	r 2.60 in / 66 mm

Product Range and Company Overview

A Complete Suite of Automation Services

Our experienced engineers provide complete support at every stage of your development process, including: conceptualization, analysis, engineering, design, assembly, documentation, validation, and production.



Custom Automation Components
Complete custom engineered solutions



Custom Control Cabinets
Comprehensive engineering support and on-site services



Complete Systems
Shipment, stocking and storage services

The Broadest Range of Automation Components

With a comprehensive line of more than 30,000 automation components, Festo is capable of solving the most complex automation requirements.



Electromechanical
Electromechanical actuators, motors, controllers & drives



Pneumatics
Pneumatic linear and rotary actuators, valves, and air supply



PLCs and I/O Devices
PLC's, operator interfaces, sensors and I/O devices

Supporting Advanced Automation... As No One Else Can!

Festo is a leading global manufacturer of pneumatic and electromechanical systems, components and controls for industrial automation, with more than 12,000 employees in 56 national headquarters serving more than 180 countries. For more than 80 years, Festo has continuously elevated the state of manufacturing with innovations and optimized motion control solutions that deliver higher performing, more profitable automated manufacturing and processing equipment. Our dedication to the advancement of automation extends beyond technology to the education and development of current and future automation and robotics designers with simulation tools, teaching programs, and on-site services.

Quality Assurance, ISO 9001 and ISO 14001 Certifications

Festo Corporation is committed to supply all Festo products and services that will meet or exceed our customers' requirements in product quality, delivery, customer service and satisfaction.

To meet this commitment, we strive to ensure a consistent, integrated, and systematic approach to management that will meet or exceed the requirements of the ISO 9001 standard for Quality Management and the ISO 14001 standard for Environmental Management.



© Copyright 2008, Festo Corporation. While every effort is made to ensure that all dimensions and specifications are correct, Festo cannot guarantee that publications are completely free of any error, in particular typing or printing errors. Accordingly, Festo cannot be held responsible for the same. For Liability and Warranty conditions, refer to our "Terms and Conditions of Sale", available from your local Festo office. All rights reserved. No part of this publication may be reproduced, distributed, or transmitted in any form or by any means, electronic, mechanical, photocopying or otherwise, without the prior written permission of Festo. All technical data subject to change according to technical update.



Printed on recycled paper at New Horizon Graphic, Inc., FSC certified as an environmentally friendly printing plant.

Festo North America

United States

Customer Resource Center
502 Earth City Expy., Suite 125
Earth City, MO 63045

For ordering assistance, or to find
your nearest Festo Distributor,

Call: 1.800.99.FESTO

Fax: 1.800.96.FESTO

Email: customer.service@us.festo.com

For technical support,

Call: 1.866.GO.FESTO

Fax: 1.800.96.FESTO

Email: product.support@us.festo.com

Headquarters

Festo Corporation
395 Moreland Road
P.O. Box 18023
Hauppauge, NY 11788
www.festo.com/us

Sales Offices

Appleton

N. 922 Tower View Drive, Suite N
Greenville, WI 54942

Boston

120 Presidential Way, Suite 330
Woburn, MA 01801

Chicago

1441 East Business Center Drive
Mt. Prospect, IL 60056

Dallas

1825 Lakeway Drive, Suite 600
Lewisville, TX 75057

Detroit - Automotive Engineering Center

2601 Cambridge Court, Suite 320
Auburn Hills, MI 48326

New York

395 Moreland Road
Hauppauge, NY 11788

Silicon Valley

4935 Southfront Road, Suite F
Livermore, CA 94550

Design and Manufacturing Operations



East: 395 Moreland Road, Hauppauge, NY 11788



Central: 1441 East Business Center Drive, Mt. Prospect, IL 60056



West: 4935 Southfront Road, Suite F, Livermore, CA 94550

Mexico

Headquarters

Festo Pneumatic, S.A.
Av. Ceylán 3, Col. Tequesquahuac
54020 Tlalnepantla, Edo. de México
Call: 011 52 [55] 53 21 66 00
Fax: 011 52 [55] 53 21 66 65
Email: festo.mexico@mx.festo.com
www.festo.com/mx



Canada

Headquarters

Festo Inc.
5300 Explorer Drive
Mississauga, Ontario L4W 5G4
Call: 1.905.624.9000
Fax: 1.905.624.9001
Email: info.ca@ca.festo.com
www.festo.com/ca



Festo Worldwide

Argentina Australia Austria Belarus Belgium Brazil Bulgaria Canada Chile China Colombia Croatia Czech Republic Denmark
Estonia Finland France Germany Great Britain Greece Hong Kong Hungary India Indonesia Iran Ireland Israel Italy Japan
Latvia Lithuania Malaysia Mexico Netherlands New Zealand Norway Peru Philippines Poland Romania Russia Serbia Singapore
Slovakia Slovenia South Africa South Korea Spain Sweden Switzerland Taiwan Thailand Turkey Ukraine United States Venezuela

www.festo.com