

# Classic Tiger Series Power Valves

5/2 - 5 Ported 4 Way, 2 Position Valves, Piloted, G 1/4 or 1/4" NPT

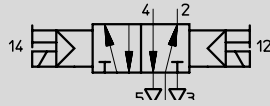
**FESTO**

## Double Solenoid Valve

With Manual Override and Socket

Type JMFH-5-1/4

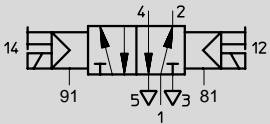
JMFH-5-1/4-NPT



With External Pilot Supply

Type JMFH-5-1/4-S

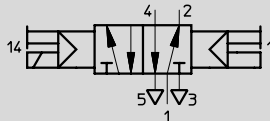
JMFH-5-1/4-S-NPT



## Dominating Double Solenoid Valve

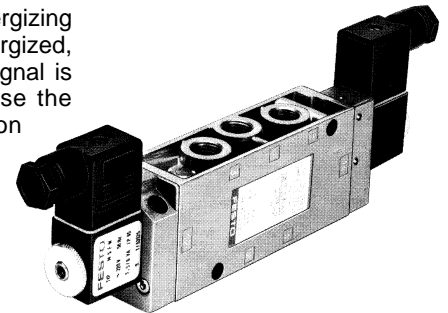
With Manual Override

Type JMFDH-5-1/4



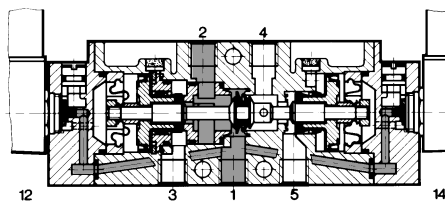
The valve is shifted by alternately energizing the solenoids. When a solenoid is energized, the valve shifts. Only a momentary signal is required (see response time) because the valve will maintain its shifted position until the other solenoid is energized.

If both solenoids are energized, (JMFDH) solenoid 14 will dominate and the valve will shift to the flow position 1 → 4, 2 → 3.



Valve shown with solenoid and socket accessories.

Example: Type JMFH-5-1/4



- 1 (P) = Supply
- 4, 2 (A, B) = Outlet
- 5, 3 (R, S) = Exhaust
- 81, 91 (Pz) = Auxiliary Pilot Air

For manifold mounting,  
Type PAL-..., see page 451.  
Type PRS-..., see page 452.

### Accessories:

(Order Separately)

#### Solenoid F-coils

with socket, see page 455

without socket, see page 456

#### Standard Sockets, Type MSSD-F

see page 459

#### Sockets with cable, Type KMF-...

see page 460

#### LED Gaskets, Type MF-LD-...

see pages 462-463

#### Indicator Inserts, Type MFL-...

see page 464

#### Solenoid Inserts, Type MFZ-...

see page 465

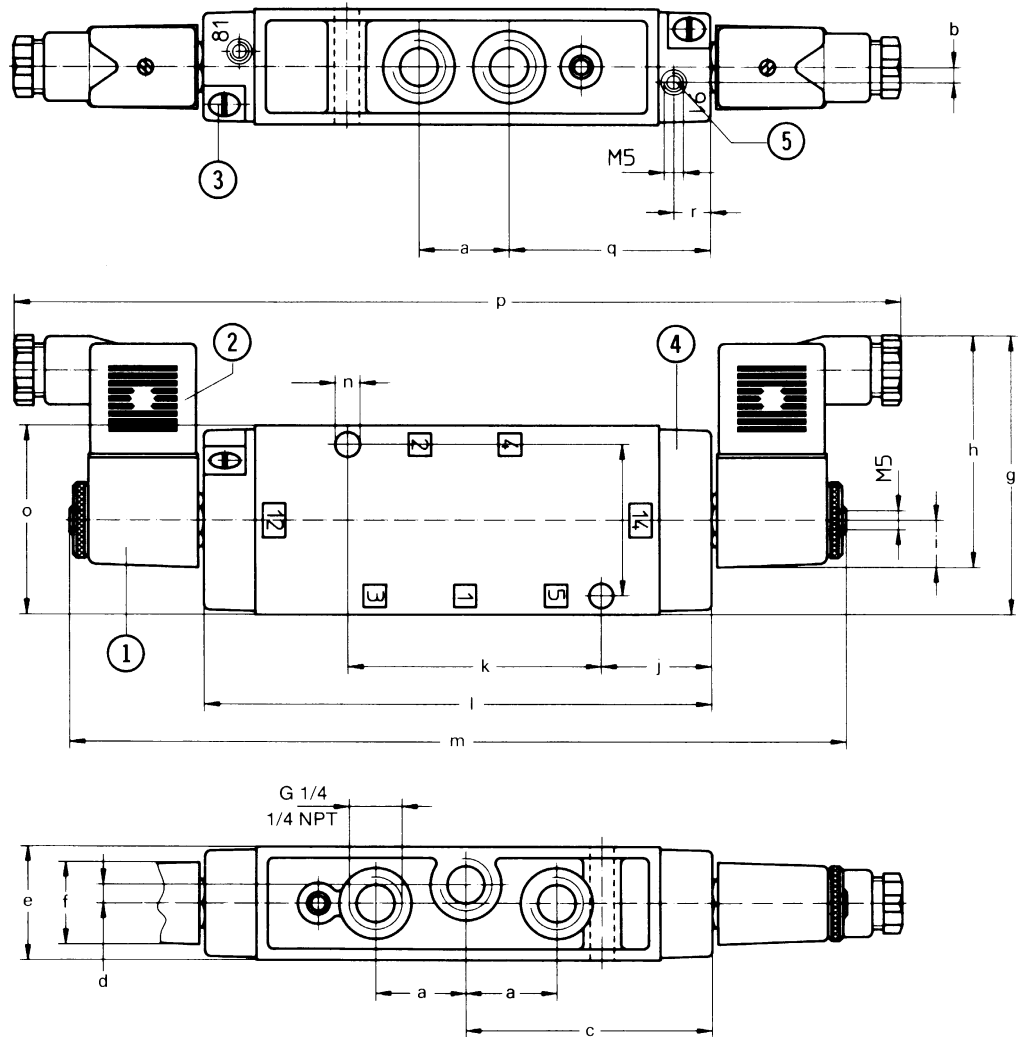
Order Number Part No./Type	10410 JMFH-5-1/4	14009 JMFH-5-1/4-S	10411 JMFDH-5-1/4
	10876 JMFH-5-1/4-NPT	15614 JMFH-5-1/4-S-NPT	—
Medium	Compressed air, filtered (lubricated or unlubricated)		
Design	Poppet valve, piloted		
Mounting	Through-holes in housing		
Connection	G 1/4 ISO / 1/4 NPT		G 1/4 ISO; 81, 91: M5
Orifice Size	0.28 in / 7 mm		
C <sub>v</sub> Factor (P → A)	1.100 C <sub>v</sub> / 1100 l/min		
Operating Pressure Range	22.5 to 120 psi / 1.5 to 8 bar	0 to 120 psi / 0 to 8 bar	37.5 to 120 psi / 2.5 to 8 bar
Pilot Pressure Range	—	18 to 120 psi / 1.2 to 8 bar	—
Response Time at 90 psi / 6 bar	11 ms		11 ms, dominating function 32 ms
Medium Temperature*	14 to 140°F / -10 to +60°C		
Materials	Housing: Diecast aluminum, anodized; Seals: Buna N		
Weight	1.69 lb / 0.530 kg		
Direct Current	Standard Voltage	12, 24V	} For solenoid coils, see pages 455-456.
Alternating Current	Available Voltage	12 to 230V	
	Standard Voltage	24, 42, 110, 230V / 50 to 60 Hz	
Available Voltage	12 to 240V / 50 or 60 Hz		
Power Consumption	DC: 4.5 W; AC: Holding 6 VA, In rush 7.5 VA		
ED Switching Time	100%		
Type of Protection	IP 65 (DIN 40050)		

\*23 to 104°F / -5 to +40°C ambient temperature range

# Classic Tiger Series Power Valves

## Dimensions

Type JMFH-5-1/4,  
 JMFH-5-1/4-NPT  
 JMFH-5-1/4-S,  
 JMFH-5-1/4-S-NPT  
 JMFDH-5-1/4



- ① Solenoid coil can be rotated
- ② Plug can be turned 180°
- ③ Manual override
- ④ Cover can be rotated 180°
- ⑤ Additional auxiliary control air connection with Type JMFH-5-1/4-S

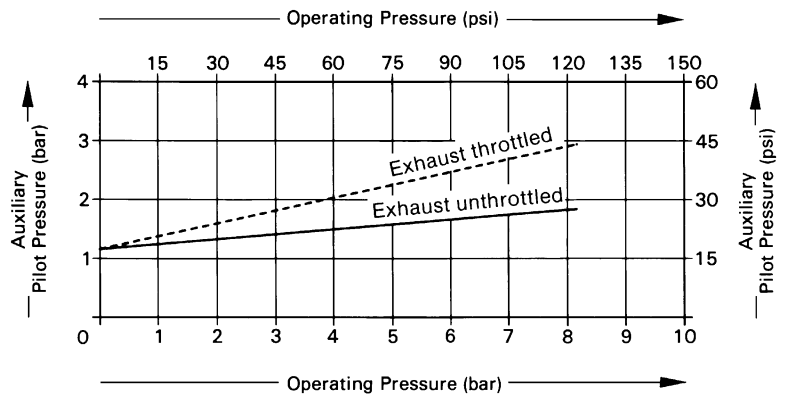
Permissible torque for solenoid mounting nuts =  
 13 lb in / 150 Ncm

- 1 (P) = Supply
- 4, 2 (A, B) = Outlet
- 5, 3 (R, S) = Exhaust
- 81, 91 (Pz) = Auxiliary Pilot Air

### Dimensions

a	0.94 in / 24 mm	j	1.14 in / 29 mm
b	0.16 in / 4 mm	k	2.64 in / 67 mm
c	2.56 in / 65 mm	l	5.28 in / 134 mm
d	0.20 in / 5 mm	m	8.07 in / 205 mm
e	1.20 in / 30.4 mm	n	0.26 in / 6.5 mm
f	0.87 in / 22 mm	o	1.97 in / 50 mm
g	2.89 in / 73.5 mm	p	9.21 in / 234 mm
h	2.40 in / 61 mm	q	2.09 in / 53 mm
i	0.49 in / 12.5 mm	r	0.37 in / 9.5 mm

Minimum pilot pressure as a function of operating pressure, with Type JMFH-5-1/4-S, JMFH-5-1/4-S NPT



### Wear Parts Kit

For Type	JMFH-5-1/4, JMFH-5-1/4-S
Part Number	104892

# Product Range and Company Overview

## A Complete Suite of Automation Services

Our experienced engineers provide complete support at every stage of your development process, including: conceptualization, analysis, engineering, design, assembly, documentation, validation, and production.



**Custom Automation Components**  
Complete custom engineered solutions



**Custom Control Cabinets**  
Comprehensive engineering support and on-site services



**Complete Systems**  
Shipment, stocking and storage services

## The Broadest Range of Automation Components

With a comprehensive line of more than 30,000 automation components, Festo is capable of solving the most complex automation requirements.



**Electromechanical**  
Electromechanical actuators, motors, controllers & drives



**Pneumatics**  
Pneumatic linear and rotary actuators, valves, and air supply



**PLCs and I/O Devices**  
PLC's, operator interfaces, sensors and I/O devices

## Supporting Advanced Automation... As No One Else Can!

Festo is a leading global manufacturer of pneumatic and electromechanical systems, components and controls for industrial automation, with more than 12,000 employees in 56 national headquarters serving more than 180 countries. For more than 80 years, Festo has continuously elevated the state of manufacturing with innovations and optimized motion control solutions that deliver higher performing, more profitable automated manufacturing and processing equipment. Our dedication to the advancement of automation extends beyond technology to the education and development of current and future automation and robotics designers with simulation tools, teaching programs, and on-site services.

## Quality Assurance, ISO 9001 and ISO 14001 Certifications

Festo Corporation is committed to supply all Festo products and services that will meet or exceed our customers' requirements in product quality, delivery, customer service and satisfaction.

To meet this commitment, we strive to ensure a consistent, integrated, and systematic approach to management that will meet or exceed the requirements of the ISO 9001 standard for Quality Management and the ISO 14001 standard for Environmental Management.



© Copyright 2008, Festo Corporation. While every effort is made to ensure that all dimensions and specifications are correct, Festo cannot guarantee that publications are completely free of any error, in particular typing or printing errors. Accordingly, Festo cannot be held responsible for the same. For Liability and Warranty conditions, refer to our "Terms and Conditions of Sale", available from your local Festo office. All rights reserved. No part of this publication may be reproduced, distributed, or transmitted in any form or by any means, electronic, mechanical, photocopying or otherwise, without the prior written permission of Festo. All technical data subject to change according to technical update.



Printed on recycled paper at New Horizon Graphic, Inc., FSC certified as an environmentally friendly printing plant.

# Festo North America

## United States

**Customer Resource Center**  
502 Earth City Expy., Suite 125  
Earth City, MO 63045

For ordering assistance, or to find  
your nearest Festo Distributor,

**Call:** 1.800.99.FESTO

**Fax:** 1.800.96.FESTO

**Email:** [customer.service@us.festo.com](mailto:customer.service@us.festo.com)

For technical support,

**Call:** 1.866.GO.FESTO

**Fax:** 1.800.96.FESTO

**Email:** [product.support@us.festo.com](mailto:product.support@us.festo.com)

### Headquarters

Festo Corporation  
395 Moreland Road  
P.O. Box 18023  
Hauppauge, NY 11788  
[www.festo.com/us](http://www.festo.com/us)

---

### Sales Offices

#### Appleton

N. 922 Tower View Drive, Suite N  
Greenville, WI 54942

#### Boston

120 Presidential Way, Suite 330  
Woburn, MA 01801

#### Chicago

1441 East Business Center Drive  
Mt. Prospect, IL 60056

#### Dallas

1825 Lakeway Drive, Suite 600  
Lewisville, TX 75057

#### Detroit - Automotive Engineering Center

2601 Cambridge Court, Suite 320  
Auburn Hills, MI 48326

#### New York

395 Moreland Road  
Hauppauge, NY 11788

#### Silicon Valley

4935 Southfront Road, Suite F  
Livermore, CA 94550

## Design and Manufacturing Operations



**East:** 395 Moreland Road, Hauppauge, NY 11788



**Central:** 1441 East Business Center Drive, Mt. Prospect, IL 60056



**West:** 4935 Southfront Road, Suite F, Livermore, CA 94550

---

## Mexico

### Headquarters

Festo Pneumatic, S.A.  
Av. Ceylán 3, Col. Tequesquahuac  
54020 Tlalnepantla, Edo. de México  
Call: 011 52 [55] 53 21 66 00  
Fax: 011 52 [55] 53 21 66 65  
Email: [festo.mexico@mx.festo.com](mailto:festo.mexico@mx.festo.com)  
[www.festo.com/mx](http://www.festo.com/mx)



## Canada

### Headquarters

Festo Inc.  
5300 Explorer Drive  
Mississauga, Ontario L4W 5G4  
Call: 1.905.624.9000  
Fax: 1.905.624.9001  
Email: [info.ca@ca.festo.com](mailto:info.ca@ca.festo.com)  
[www.festo.com/ca](http://www.festo.com/ca)



---

## Festo Worldwide

Argentina Australia Austria Belarus Belgium Brazil Bulgaria Canada Chile China Colombia Croatia Czech Republic Denmark  
Estonia Finland France Germany Great Britain Greece Hong Kong Hungary India Indonesia Iran Ireland Israel Italy Japan  
Latvia Lithuania Malaysia Mexico Netherlands New Zealand Norway Peru Philippines Poland Romania Russia Serbia Singapore  
Slovakia Slovenia South Africa South Korea Spain Sweden Switzerland Taiwan Thailand Turkey Ukraine United States Venezuela

[www.festo.com](http://www.festo.com)