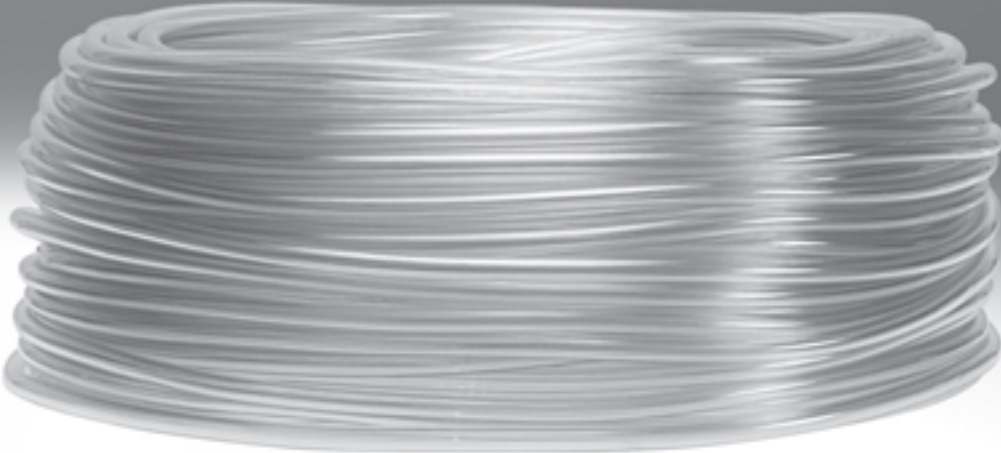



Plastic tubing, standard I.D.

**FESTO**



# Plastic tubing, standard I.D.

Product range overview and type codes

Product range overview											
Version	Type	I.D.	Colour			Operating medium			Resist- ance	Shore hardness <sup>2)</sup>	→ Page/ Internet
			Blue	Black	Natural	Compressed air	Vacuum	Water (not drinking water)			
	PU TPE-U(PU) <sup>1)</sup>	9	-	■	-	■	-	-	+	A 93 ±3	3
		13.1	-	■	-	■	-	-			
	PCN PVC	4	-	-	■	■	■	■		A 76 ±3	4
	P NBR	6, 9	■	-	-	■	■	■		A 68 ±5	5
	P EPDM, SBR	13, 19	-	■	-	■	■	■		A 71 ±5	5

- 1) Fibre-reinforced
- 2) Values are determined using test boards. Values determined using tubing may vary.
- + Limited suitability (on request)
- Not suitable

## Type codes

	PCN	4	NT	
--	-----	---	----	--

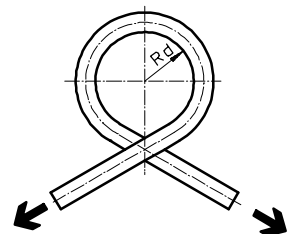
Material	
PU	TPE-U(PU)
PCN	PVC
P	NBR (I.D. 6/9 mm)
	EPDM, SBR (I.D. 13/19 mm)

I.D. [mm]	

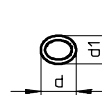
Colour	
SW	Black
BL	Blue
NT	Natural

## Method of measurement

Flow-relevant bending radius Rd

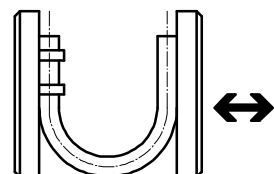


The tube is bent in the direction of its own curve until the tubing outer diameter is flattened by 5%. Rd is then calculated mathematically. The flow rate is not reduced until Rd is reached.



Cross section flattened by bending the tube.  
 d = non-deformed tubing O.D.  
 d1 = deformed tubing O.D.

Minimum bending radius Rmin



The tube fixed to the base plate is bent until the deformation results in a kink. The measured value is the minimum bending radius Rmin. This Rmin results in significant reductions in flow rate.

# Plastic tubing PU

Technical data

## Plastic tubing PU

Highly flexible fibre-reinforced plastic tubing distinguished by its great resistance to abrasion and to kinks.



Operating and environmental conditions		
Type	PU-9	PU-13
Operating pressure for entire temperature range [bar]	0 ... +10	-0.95 ... +10
Operating medium	Compressed air to ISO 8573-1:2010 [7:-:-]	
Note on operating/pilot medium	Lubricated operation possible	
Ambient temperature [°C]	-35 ... +60	

## Possible fittings



Quick connector CK

→ Internet: ck

Materials	
Shore hardness	A 93 ±3
Tube	TPE-U(PU)
Note on materials	RoHS-compliant
	Free of copper and PTFE

Dimensions and ordering data							
O.D. [mm]	I.D. [mm]	Flow-relevant bending radius [mm]	Weight [kg/m]	Colour	Part No.	Type	PU <sup>1)</sup> [m]
11.6	9	76	0.056	Black	12134	PU-9-SW	50
18	13.1	83	0.133	Black	12133	PU-13-SW	50

1) Packaging unit

# Plastic tubing PCN

Technical data

FESTO

## Plastic tubing PCN

For draining condensate in service units series D and MS



Operating and environmental conditions		
Operating pressure for entire temperature range	[bar]	-0.5 ... +0.25
Ambient temperature	[°C]	-10 ... +60

Materials	
Shore hardness	A 76 ±3
Tube	PVC
Note on materials	RoHS-compliant

Dimensions and ordering data						
O.D. [mm]	I.D. [mm]	Weight [kg/m]	Colour	Part No.	Type	PU <sup>1)</sup> [m]
6.5	4	0.025	Natural	7134	PCN-4-NT	50

1) Packaging unit

# Rubber tubing P

Technical data

## Rubber tubing P, with fibre reinforcement

Highly flexible tubing with fibre reinforcement for barbed hose fitting N-...-P and hose clip SK



Operating and environmental conditions	
Operating pressure for entire temperature range [bar]	-0.95 ... +16
Operating medium	Compressed air to ISO 8573-1:2010 [7:-:-]
Ambient temperature [°C]	-20 ... +80

Materials				
Type	P-6	P-9	P-13	P-19
Shore hardness	A 68 ±5		A 71 ±5	
Tube	NBR		EPDM, SBR	
Note on materials	RoHS-compliant			
	Free of copper and PTFE			

Dimensions and ordering data								
O.D.	I.D.	Min. bending radius	Flow-relevant bending radius	Weight	Colour	Part No.	Type	PU <sup>1)</sup>
[mm]	[mm]	[mm]	[mm]	[kg/m]				[m]
13	6	20	45	0.144	Blue	2231	P-6-BL	40
16	9	30	60	0.186	Blue	2232	P-9-BL	40
23	13	50	100	0.40	Black	2234	P-13-SW	40
31	19	60	200	0.649	Black	2235	P-19-SW	40

1) Packaging unit

## Product Range and Company Overview

### A Complete Suite and Company Overview

Our experienced engineers provide complete support at every stage of your development process, including: conceptualization, analysis, engineering, design, assembly, documentation, validation, and production.



**Custom Automation Components**  
Complete custom engineered solutions



**Custom Control Cabinets**  
Comprehensive engineering support and on-site services



**Complete Systems**  
Shipment, stocking and storage services

### The Broadest Range of Automation Components

With a comprehensive line of more than 30,000 automation components, Festo is capable of solving the most complex automation requirements.



**Electromechanical**  
Electromechanical actuators, motors, controllers & drivers



**Pneumatics**  
Pneumatic linear and rotary actuators, valves, and air supply



**PLCs and I/O Devices**  
PLC's, operator interfaces, sensors and I/O devices

### Supporting Advanced Automation... As No One Else Can!

Festo is a leading global manufacturer of pneumatic and electromechanical systems, components and controls for industrial automation, with more than 16,000 employees in 60 national headquarters serving more than 180 countries. For more than 80 years, Festo has continuously elevated the state of manufacturing with innovations and optimized motion control solutions that deliver higher performing, more profitable automated manufacturing and processing equipment. Our dedication to the advancement of automation extends beyond technology to the education and development of current and future automation and robotics designers with simulation tools, teaching programs, and on-site services.

### Quality Assurance, ISO 9001 and ISO 14001 Certifications

Festo Corporation is committed to supply all Festo products and services that will meet or exceed our customers' requirements in product quality, delivery, customer service and satisfaction.

To meet this commitment, we strive to ensure a consistent, integrated, and systematic approach to management that will meet or exceed the requirements of the ISO 9001 standard for Quality Management and the ISO 14001 standard for Environmental Management.

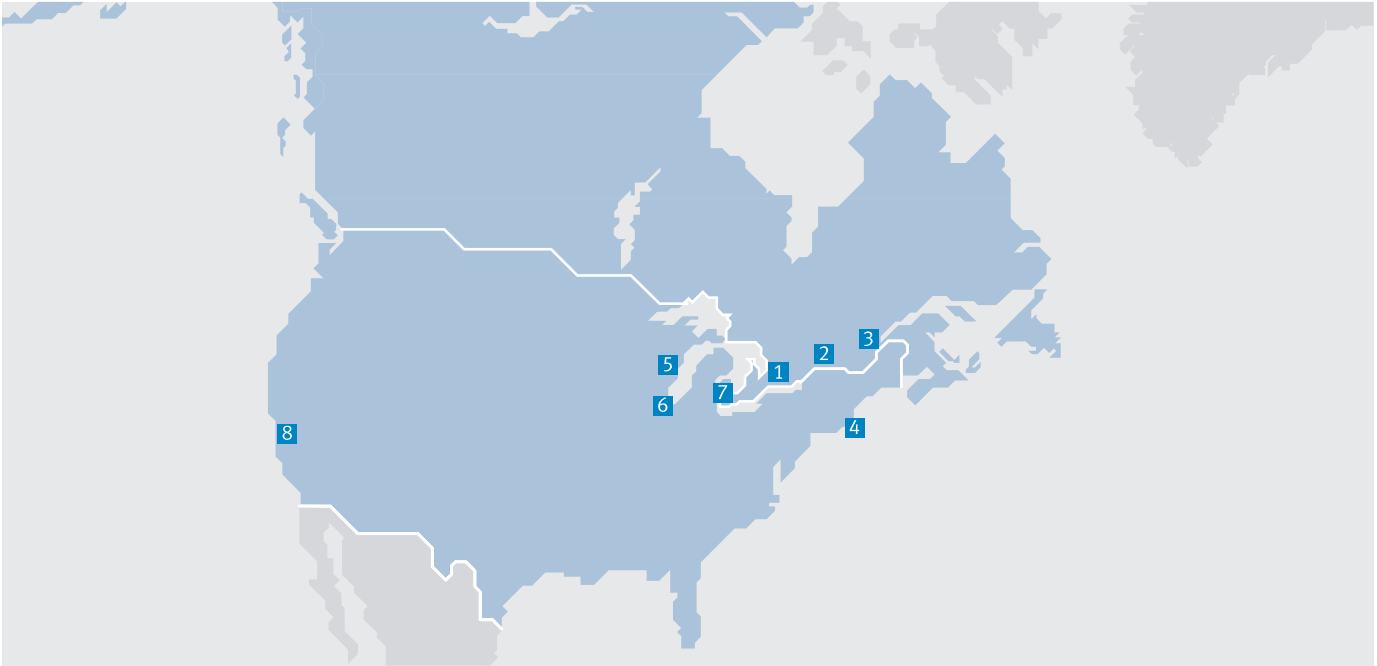


© Copyright 2013, Festo Corporation. While every effort is made to ensure that all dimensions and specifications are correct, Festo cannot guarantee that publications are completely free of any error, in particular typing or printing errors. Accordingly, Festo cannot be held responsible for the same. For Liability and Warranty conditions, refer to our "Terms and Conditions of Sale", available from your local Festo office. All rights reserved. No part of this publication may be reproduced, distributed, or transmitted in any form or by any means, electronic, mechanical, photocopying or otherwise, without the prior written permission of Festo. All technical data subject to change according to technical update.



Printed on recycled paper at New Horizon Graphic, Inc., FSC certified as an environmental friendly printing plant.

# Festo North America



**1 Festo Canada  
Headquarters  
Festo Inc.**  
5300 Explorer Drive  
Mississauga, ON  
L4W 5G4

**2 Montréal**  
5600, Trans-Canada  
Pointe-Claire, QC  
H9R 1B6

**3 Québec City**  
2930, rue Watt#117  
Québec, QC  
G1X 4G3



**4 Festo United States  
Headquarters  
Festo Corporation**  
395 Moreland Road  
Hauppauge, NY  
11788

**5 Appleton**  
North 922 Tower View Drive, Suite N  
Greenville, WI  
54942

**7 Detroit**  
1441 West Long Lake Road  
Troy, MI  
48098

**6 Chicago**  
85 W Algonquin - Suite 340  
Arlington Heights, IL  
60005

**8 Silicon Valley**  
4935 Southfront Road, Suite F  
Livermore, CA  
94550

## Festo Regional Contact Center

### Canadian Customers

Commercial Support:  
Tel: 1 877 GO FESTO (1 877 463 3786)  
Fax: 1 877 FX FESTO (1 877 393 3786)  
Email: festo.canada@ca.festo.com

Technical Support:  
Tel: 1 866 GO FESTO (1 866 463 3786)  
Fax: 1 877 FX FESTO (1 877 393 3786)  
Email: technical.support@ca.festo.com

### USA Customers

Commercial Support:  
Tel: 1 800 99 FESTO (1 800 993 3786)  
Fax: 1 800 96 FESTO (1 800 963 3786)  
Email: customer.service@us.festo.com

Technical Support:  
Tel: 1 866 GO FESTO (1 866 463 3786)  
Fax: 1 800 96 FESTO (1 800 963 3786)  
Email: product.support@us.festo.com