

Rotary distributors GF



Rotary distributors GF

Product range overview and type codes

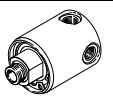
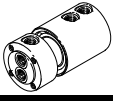
General

The rotary distributors GF with single or multiple rotary through-feed transmit media from stationary sources to rotating machine parts.

The compact and sturdy design with double bearing makes the rotary distributors a reliable means of protecting your media supply against

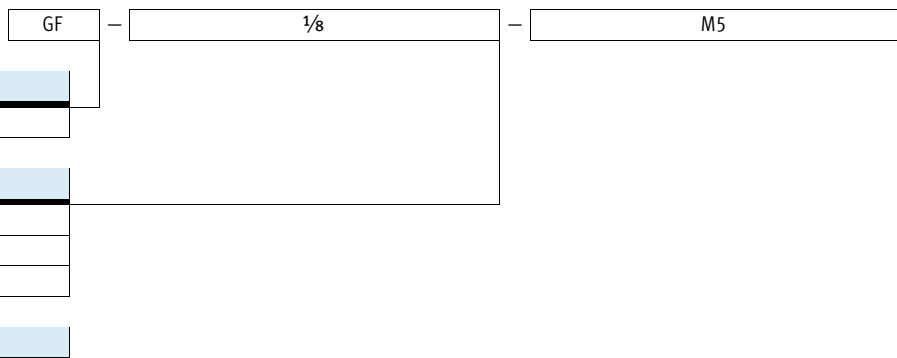
mechanical loads. In the case of the rotary distributors with multiple rotary through-feed, the

medium can be flexibly supplied and returned through the radial and axial inlets and outlets.

Product range overview						
Design	Version	Type	Pneumatic connection		Max. rotational speed [rpm]	→ Page/Internet
			Inlet	Outlet		
Single rotary through-feed		GF	1 inlet, 4 outlets		3,000	3
			G $\frac{1}{8}$	M5		
			G $\frac{1}{4}$	G $\frac{1}{8}$	2,500	G $\frac{1}{4}$
G $\frac{1}{2}$	G $\frac{1}{4}$					
Multiple rotary through-feed		GF	2 separate inlets and outlets		300	5
			G $\frac{1}{8}$	G $\frac{1}{8}$		
			G $\frac{1}{4}$	G $\frac{1}{4}$	G $\frac{1}{2}$	
G $\frac{1}{2}$	G $\frac{1}{2}$					

Type codes

Single rotary through-feed



Basic function

GF	Single rotary distributor
----	---------------------------

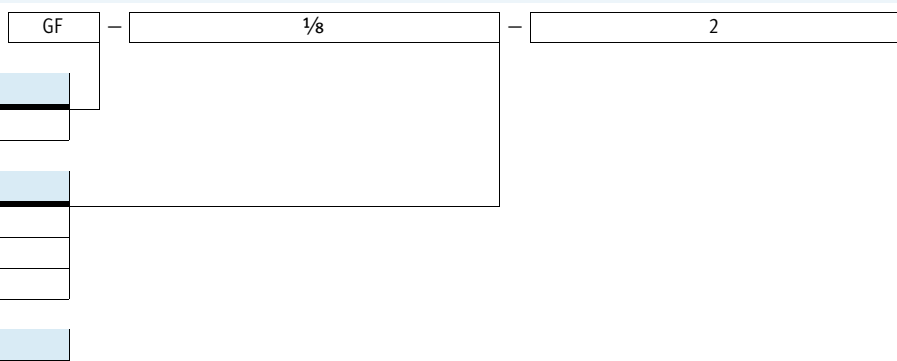
Pneumatic connection, inlet

$\frac{1}{8}$	G $\frac{1}{8}$ thread
$\frac{1}{4}$	G $\frac{1}{4}$ thread
$\frac{1}{2}$	G $\frac{1}{2}$ thread

Pneumatic connection, outlet

M5	M5 thread
$\frac{1}{8}$	G $\frac{1}{8}$ thread
$\frac{1}{4}$	G $\frac{1}{4}$ thread

Multiple rotary through-feed



Basic function

GF	Multiple rotary distributor
----	-----------------------------

Pneumatic connection

$\frac{1}{8}$	G $\frac{1}{8}$ thread
$\frac{1}{4}$	G $\frac{1}{4}$ thread
$\frac{1}{2}$	G $\frac{1}{2}$ thread



Number of air through-feeds

2	Air through-feeds
---	-------------------

Rotary distributors GF

Technical data – Single rotary through-feed

Single rotary through-feed
1 inlet, 4 outlets


-  - Temperature range
-10 ... +80 °C
-  - Pressure
-0.95 ... +10 bar



General technical data			
Pneumatic connection 1	G1/8	G1/4	G1/2
Pneumatic connection 2	M5	G1/8	G1/4
Mounting position	Any		
Max. rotational speed [rpm]	3,000	3,000	2,500
Max. radial force [N]	150	150	250
Max. axial force [N]	50	50	50
Max. tightening torque [Nm]	10	15	40

Operating and environmental conditions	
Operating pressure for entire temperature range [bar]	-0.95 ... +10
Operating medium	Compressed air according to ISO 8573-1:2010 [7:-:-]
Note on operating/pilot medium	Lubricated operation possible
Ambient temperature [°C]	-10 ... +80
Corrosion resistance class CRC ¹⁾	1

1) Corrosion resistance class CRC 1 to Festo standard FN 940070
Low corrosion stress. For dry indoor applications or transport and storage protection. Also applies to parts behind covers, in the non-visible interior area, and parts which are covered in the application (e.g. drive trunnions).

-  - Note

When using speeds above 1,000 rpm, only lubricated compressed air should be used. If no lubricated compressed air is available, the depot lubrication system must be replaced every 300 operating hours.

Materials	
Housing	Brass
Shaft	High-alloy steel

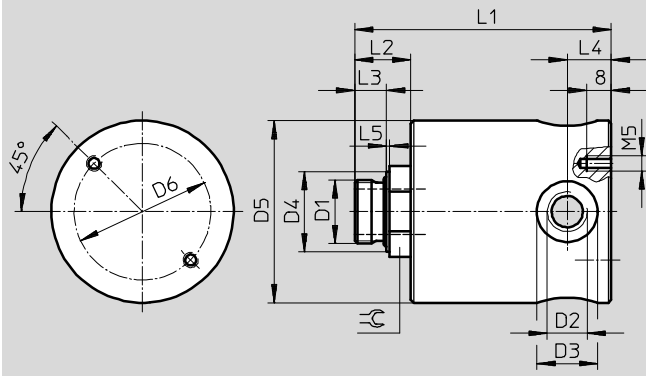
Rotary distributors GF

Technical data – Single rotary through-feed

FESTO

Dimensions

Download CAD data → www.festo.com



Inlet connection D1	Nominal size [mm]	Outlet connection D2	D3 ∅	D4 ∅	D5 ∅ -1	D6 ∅	L1	L2	L3	L4	L5	≅
G ¹ / ₈	4.1	M5	9	14.5	40	30	64	15.5	6.5	7	1	17
G ¹ / ₄	8	G ¹ / ₈	16	17	40	30	65.5	17	8	9.5	1.5	17
G ¹ / ₂	15	G ¹ / ₄	20	26.5	60	45	90	24	10.5	14.5	1.5	27



Ordering data

Pneumatic connection		Standard flow rate q _n at 6 bar → 0 bar		Weight [g]	Part No.	Type
1	2	1 → 2.1 [l/min]	1 → 2.X open [l/min]			
G ¹ / ₈	M5	490	2,250	400	539290	GF-1/8-M5
G ¹ / ₄	G ¹ / ₈	1,730	4,050	370	539291	GF-1/4-1/8
G ¹ / ₂	G ¹ / ₄	4,050	14,130	1,190	539292	GF-1/2-1/4

Rotary distributors GF

Technical data – Multiple rotary through-feed

Multiple rotary through-feed
2 separate inlets and outlets

-  - Temperature range
-10 ... +80 °C
-  - Pressure
-0.95 ... +10 bar



General technical data			
Pneumatic connection 1	G1/8	G1/4	G1/2
Pneumatic connection 2	G1/8	G1/4	G1/2
Mounting position	Any		
Max. rotational speed [rpm]	300		
Max. radial force [N]	250	300	400
Max. axial force [N]	100	100	100
Max. tightening torque [Nm]	10	15	40

Operating and environmental conditions	
Operating pressure for entire temperature range [bar]	-0.95 ... +10
Operating medium	Compressed air according to ISO 8573-1:2010 [7:-:-]
Note on operating/pilot medium	Lubricated operation possible
Ambient temperature [°C]	-10 ... +80
Corrosion resistance class CRC ¹⁾	1

1) Corrosion resistance class CRC 1 to Festo standard FN 940070
Low corrosion stress. For dry indoor applications or transport and storage protection. Also applies to parts behind covers, in the non-visible interior area, and parts which are covered in the application (e.g. drive trunnions).

Materials	
Housing	Brass
Shaft	High-alloy steel

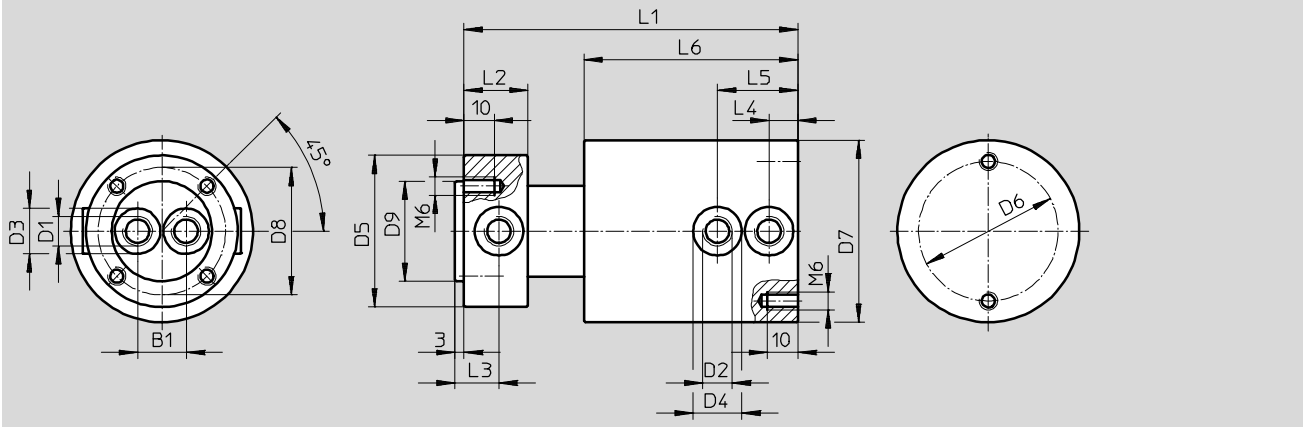
Rotary distributors GF

Technical data – Multiple rotary through-feed

FESTO

Dimensions

Download CAD data → www.festo.com



Inlet connection D1	Nominal size [mm]	Outlet connection D2	B1	D3 ∅	D4 ∅	D5 ∅	D6 ∅	D7 ∅ -1	D8 ∅	D9 ∅ f7	L1	L2	L3	L4	L5	L6
G $\frac{1}{8}$	6	G $\frac{1}{8}$	16	15	16	50	46	60	42	33	113	21	14.5	9.5	26.5	70.5
G $\frac{1}{4}$	8	G $\frac{1}{4}$	20	19	20	65	46	70	50	40	131	28	19.5	13.5	34.5	81.5
G $\frac{1}{2}$	15	G $\frac{1}{2}$	30	28	28	90	65	95	78	65	174	39	25.5	17.5	49.5	112

Ordering data

Pneumatic connection		Standard nominal flow rate qnN at 6 bar → 5 bar		Weight [g]	Part No.	Type
1	2	1.1 → 2.1 [l/min]	1.2 → 2.2 [l/min]			
G $\frac{1}{8}$	G $\frac{1}{8}$	720	1,050	1,770	539287	GF-1/8-2
G $\frac{1}{4}$	G $\frac{1}{4}$	1,250	2,020	2,950	539288	GF-1/4-2
G $\frac{1}{2}$	G $\frac{1}{2}$	4,440	7,380	7,380	539289	GF-1/2-2

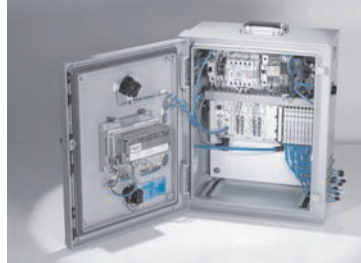
Product Range and Company Overview

A Complete Suite and Company Overview

Our experienced engineers provide complete support at every stage of your development process, including: conceptualization, analysis, engineering, design, assembly, documentation, validation, and production.



Custom Automation Components
Complete custom engineered solutions



Custom Control Cabinets
Comprehensive engineering support and on-site services



Complete Systems
Shipment, stocking and storage services

The Broadest Range of Automation Components

With a comprehensive line of more than 30,000 automation components, Festo is capable of solving the most complex automation requirements.



Electromechanical
Electromechanical actuators, motors, controllers & drivers



Pneumatics
Pneumatic linear and rotary actuators, valves, and air supply



PLCs and I/O Devices
PLC's, operator interfaces, sensors and I/O devices

Supporting Advanced Automation... As No One Else Can!

Festo is a leading global manufacturer of pneumatic and electromechanical systems, components and controls for industrial automation, with more than 16,000 employees in 60 national headquarters serving more than 180 countries. For more than 80 years, Festo has continuously elevated the state of manufacturing with innovations and optimized motion control solutions that deliver higher performing, more profitable automated manufacturing and processing equipment. Our dedication to the advancement of automation extends beyond technology to the education and development of current and future automation and robotics designers with simulation tools, teaching programs, and on-site services.

Quality Assurance, ISO 9001 and ISO 14001 Certifications

Festo Corporation is committed to supply all Festo products and services that will meet or exceed our customers' requirements in product quality, delivery, customer service and satisfaction.

To meet this commitment, we strive to ensure a consistent, integrated, and systematic approach to management that will meet or exceed the requirements of the ISO 9001 standard for Quality Management and the ISO 14001 standard for Environmental Management.

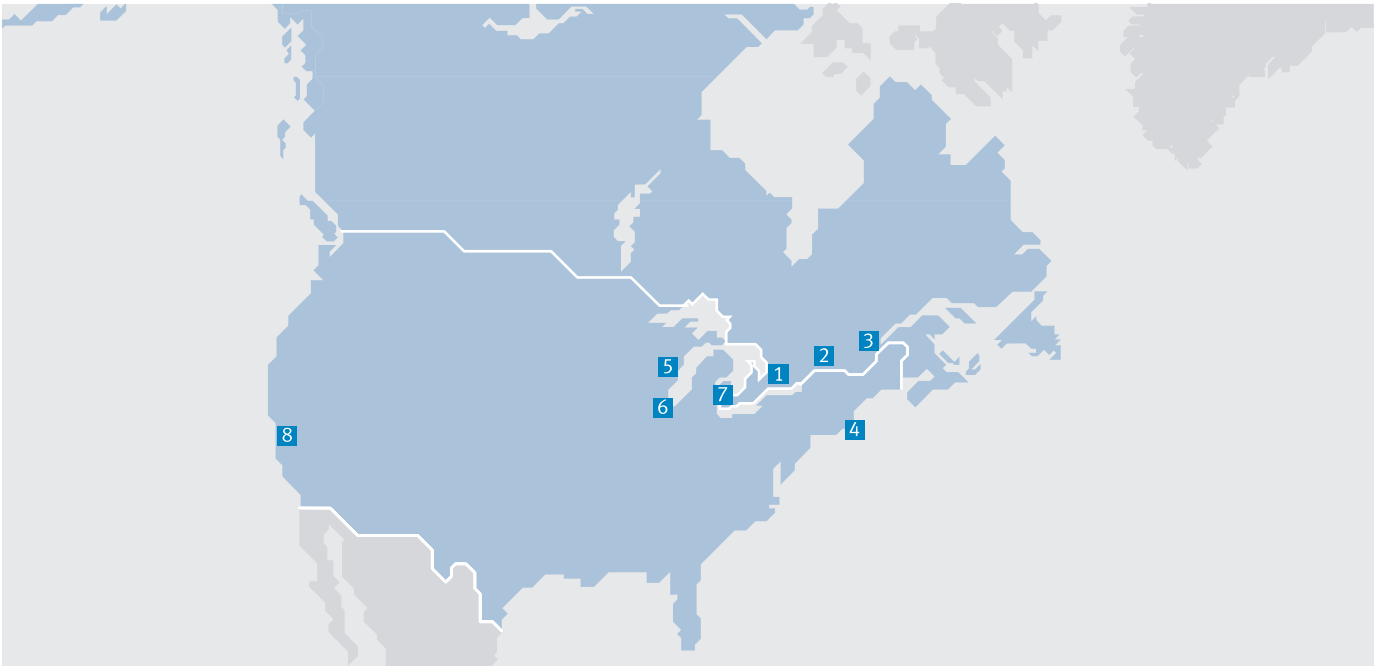


© Copyright 2013, Festo Corporation. While every effort is made to ensure that all dimensions and specifications are correct, Festo cannot guarantee that publications are completely free of any error, in particular typing or printing errors. Accordingly, Festo cannot be held responsible for the same. For Liability and Warranty conditions, refer to our "Terms and Conditions of Sale", available from your local Festo office. All rights reserved. No part of this publication may be reproduced, distributed, or transmitted in any form or by any means, electronic, mechanical, photocopying or otherwise, without the prior written permission of Festo. All technical data subject to change according to technical update.



Printed on recycled paper at New Horizon Graphic, Inc., FSC certified as an environmental friendly printing plant.

Festo North America



**1 Festo Canada
Headquarters
Festo Inc.**
5300 Explorer Drive
Mississauga, ON
L4W 5G4

2 Montréal
5600, Trans-Canada
Pointe-Claire, QC
H9R 1B6

3 Québec City
2930, rue Watt#117
Québec, QC
G1X 4G3



**4 Festo United States
Headquarters
Festo Corporation**
395 Moreland Road
Hauppauge, NY
11788

5 Appleton
North 922 Tower View Drive, Suite N
Greenville, WI
54942

7 Detroit
1441 West Long Lake Road
Troy, MI
48098

6 Chicago
85 W Algonquin - Suite 340
Arlington Heights, IL
60005

8 Silicon Valley
4935 Southfront Road, Suite F
Livermore, CA
94550

Festo Regional Contact Center

Canadian Customers

Commercial Support:
Tel: 1 877 GO FESTO (1 877 463 3786)
Fax: 1 877 FX FESTO (1 877 393 3786)
Email: festo.canada@ca.festo.com

Technical Support:
Tel: 1 866 GO FESTO (1 866 463 3786)
Fax: 1 877 FX FESTO (1 877 393 3786)
Email: technical.support@ca.festo.com

USA Customers

Commercial Support:
Tel: 1 800 99 FESTO (1 800 993 3786)
Fax: 1 800 96 FESTO (1 800 963 3786)
Email: customer.service@us.festo.com

Technical Support:
Tel: 1 866 GO FESTO (1 866 463 3786)
Fax: 1 800 96 FESTO (1 800 963 3786)
Email: product.support@us.festo.com