

Compensating components



Height compensator VAL

Technical data

FESTO

Height compensator VAL

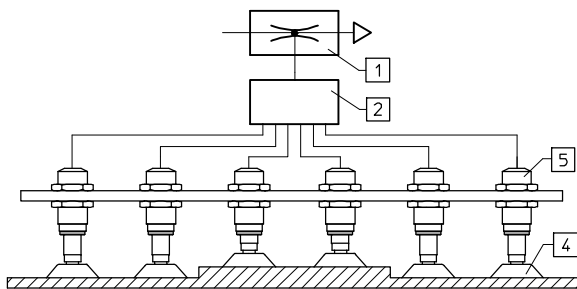
Accessory for suction cups with connection attachments VAS/VASB

➔ Internet: vas



Gentle handling of the workpieces by compensating for any excess stroke of the handling device or for tolerance differences in the workpiece thickness.

- 1 Vacuum generator
- 2 Distributor
- 4 Suction cup
- 5 Height compensator



General technical data			
Vacuum port	M5	G1/8	G1/4
Suction cup mounting	M5	G1/8	G1/4
Design	Vacuum port on top		
Mounting position	Any		
Suction cup holder height compensator [mm]	5	10	20

Operating and environmental conditions	
Operating pressure [bar]	-0.95 ... +8
Operating medium	Atmospheric air based on ISO 8573-1:2010 [7:-:-]
Ambient temperature [°C]	-10 ... +60

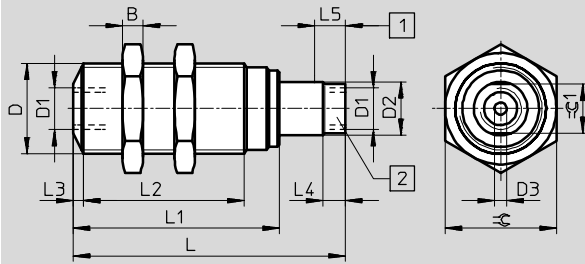
Materials	
Housing, stem	Aluminium
Sleeve, bearing	POM
Hex nut	Galvanised steel
Seals	NBR
Note on materials	Free of copper and PTFE

Height compensator VAL

Technical data

Dimensions

Download CAD data → www.festo.com



- 1 Spring travel for height compensator
- 2 Port for suction gripper

Ordering data

Vacuum port	B	D	D1	D2	D3	L	L1	L2	L3	L4	L5	≈	≈ 1	Part No.	Type
M5	5	M16x1	M5	8	2	46	35	25.5	2	4.5	5	19	7	151209	VAL-M5-5
G ¹ / ₈	6	M22x1.5	G ¹ / ₈	13	3	66	50	39	2.5	5.5	10	27	12	151210	VAL- ¹ / ₈ -10
G ¹ / ₄	8	M26x1.5	G ¹ / ₄	17	4	100	73	60	2.5	6.5	20	32	16	151211	VAL- ¹ / ₄ -20

Angle compensator ESWA

Technical data

Angle compensator ESWA

Accessory for suction gripper ESG,
mounted between suction cup holder
and suction cup with connection
attachments

→ Internet: esg



General technical data			
Pneumatic port	M4	M6	M10
Suction cup mounting	M4	M6	M10
Classification of suction cup holders	Size 3	Size 4	Size 5
Design	Ball joint		
Angle compensator +/- [°]	15		
Mounting position	Any		
Type of mounting	With male thread		

Operating and environmental conditions	
Operating pressure [bar]	-0.95 ... +4
Ambient temperature [°C]	0 ... +60
Corrosion resistance class CRC ¹⁾	1

1) Corrosion resistance class CRC 1 to Festo standard FN 940070
Low corrosion stress. For dry indoor applications or transport and storage protection. Also applies to parts behind covers, in the non-visible interior area, and parts which are covered in the application (e.g. drive trunnions).

Materials	
Housing	Aluminium, nickel-plated brass
Seals	NBR
Note on materials	RoHS-compliant

Dimensions Download CAD data → www.festo.com

Ordering data							
Allocation of suction cup holders	D1	D2	L1	L2	Weight [g]	Part No.	Type
Size 3	15	M4	23	4	9	191205	ESWA-3
Size 4	20	M6	28.5	6	19	191206	ESWA-4
Size 5	28	M10	40.5	10	57	191207	ESWA-5

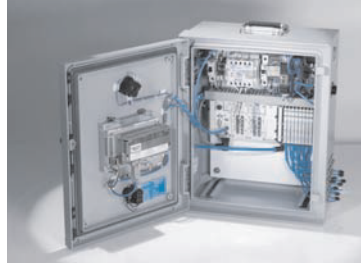
Product Range and Company Overview

A Complete Suite and Company Overview

Our experienced engineers provide complete support at every stage of your development process, including: conceptualization, analysis, engineering, design, assembly, documentation, validation, and production.



Custom Automation Components
Complete custom engineered solutions



Custom Control Cabinets
Comprehensive engineering support and on-site services



Complete Systems
Shipment, stocking and storage services

The Broadest Range of Automation Components

With a comprehensive line of more than 30,000 automation components, Festo is capable of solving the most complex automation requirements.



Electromechanical
Electromechanical actuators, motors, controllers & drivers



Pneumatics
Pneumatic linear and rotary actuators, valves, and air supply



PLCs and I/O Devices
PLC's, operator interfaces, sensors and I/O devices

Supporting Advanced Automation... As No One Else Can!

Festo is a leading global manufacturer of pneumatic and electromechanical systems, components and controls for industrial automation, with more than 16,000 employees in 60 national headquarters serving more than 180 countries. For more than 80 years, Festo has continuously elevated the state of manufacturing with innovations and optimized motion control solutions that deliver higher performing, more profitable automated manufacturing and processing equipment. Our dedication to the advancement of automation extends beyond technology to the education and development of current and future automation and robotics designers with simulation tools, teaching programs, and on-site services.

Quality Assurance, ISO 9001 and ISO 14001 Certifications

Festo Corporation is committed to supply all Festo products and services that will meet or exceed our customers' requirements in product quality, delivery, customer service and satisfaction.

To meet this commitment, we strive to ensure a consistent, integrated, and systematic approach to management that will meet or exceed the requirements of the ISO 9001 standard for Quality Management and the ISO 14001 standard for Environmental Management.

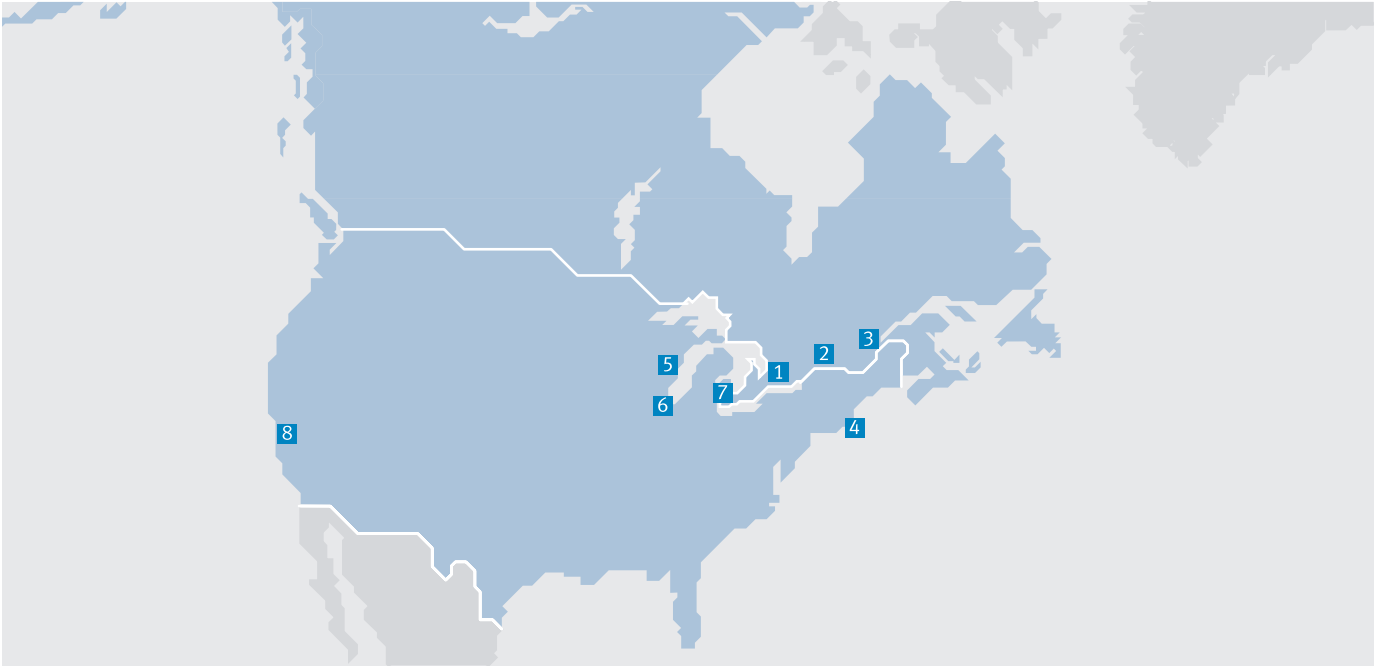


© Copyright 2013, Festo Corporation. While every effort is made to ensure that all dimensions and specifications are correct, Festo cannot guarantee that publications are completely free of any error, in particular typing or printing errors. Accordingly, Festo cannot be held responsible for the same. For Liability and Warranty conditions, refer to our "Terms and Conditions of Sale", available from your local Festo office. All rights reserved. No part of this publication may be reproduced, distributed, or transmitted in any form or by any means, electronic, mechanical, photocopying or otherwise, without the prior written permission of Festo. All technical data subject to change according to technical update.



Printed on recycled paper at New Horizon Graphic, Inc., FSC certified as an environmental friendly printing plant.

Festo North America



**1 Festo Canada
Headquarters
Festo Inc.**
5300 Explorer Drive
Mississauga, ON
L4W 5G4

2 Montréal
5600, Trans-Canada
Pointe-Claire, QC
H9R 1B6

3 Québec City
2930, rue Watt#117
Québec, QC
G1X 4G3



**4 Festo United States
Headquarters
Festo Corporation**
395 Moreland Road
Hauppauge, NY
11788

5 Appleton
North 922 Tower View Drive, Suite N
Greenville, WI
54942

7 Detroit
1441 West Long Lake Road
Troy, MI
48098

6 Chicago
85 W Algonquin - Suite 340
Arlington Heights, IL
60005

8 Silicon Valley
4935 Southfront Road, Suite F
Livermore, CA
94550

Festo Regional Contact Center

Canadian Customers

Commercial Support:
Tel: 1 877 GO FESTO (1 877 463 3786)
Fax: 1 877 FX FESTO (1 877 393 3786)
Email: festo.canada@ca.festo.com

Technical Support:
Tel: 1 866 GO FESTO (1 866 463 3786)
Fax: 1 877 FX FESTO (1 877 393 3786)
Email: technical.support@ca.festo.com

USA Customers

Commercial Support:
Tel: 1 800 99 FESTO (1 800 993 3786)
Fax: 1 800 96 FESTO (1 800 963 3786)
Email: customer.service@us.festo.com

Technical Support:
Tel: 1 866 GO FESTO (1 866 463 3786)
Fax: 1 800 96 FESTO (1 800 963 3786)
Email: product.support@us.festo.com