

Sockets, type A, 3-pin

Technical data

FESTO

Plug socket
MSSD-C

- For valves with D and N1 solenoid coils
- Cable connection with screw terminal



General technical data			
Type	MSSD-C	MSSD-C-M16	MSSD-C-TY-24DC
Electrical connection	Angled socket		
	3-pin		
	Screw terminal	Screw terminal	–
	Square design MSC/MSN1	Square design	Square design
	Type A	Type A	Type A
Electrical connection	To EN 175301-803	To EN 175301-803	To EN 175301-803
Switching position display	–	–	LED
Nominal operating voltage [V DC]	–	–	24
Cable connector	Pg9	M16	Pg11
Permissible cable diameter [mm]	6 ... 8	6 ... 8	8 ... 10
Connection cross section [mm ²]	Max. 1.5	Max. 1.5	Max. 1.5
Connection frequency	–	50	–
Type of mounting	Central screw M3	Central screw M3	Central screw M3
Mounting position	Any	Any	Any
Protection class to EN 60529	IP65 (assembled)	IP65 (assembled)	IP65 (assembled)
Product weight [g]	22	38	–

Materials			
Type	MSSD-C	MSSD-C-M16	MSSD-C-TY-24DC
Housing	Plastic	Reinforced PA	PA
Housing colour	Black	–	Transparent
Seals	–	HNBR	–
Note on materials	RoHS-compliant	–	–

Operating and environmental conditions			
Type	MSSD-C	MSSD-C-M16	MSSD-C-TY-24DC
Ambient temperature [°C]	–25 ... +90	–20 ... +115	–40 ... +90
CE marking (see declaration of conformity)	To EU Low Voltage Directive ¹⁾	–	–
Certification	Germanischer Lloyd	–	–

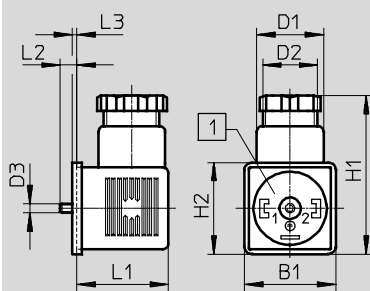
1) For information about the applicability of the component see the manufacturer's EC declaration of conformity at: www.festo.com → Support → User documentation.
If the component is subject to restrictions on usage in residential, office or commercial environments or small businesses, further measures to reduce the emitted interference may be necessary.

Sockets, type A, 3-pin

Technical data

Dimensions

Download CAD data → www.festo.com



1 Insert can be repositioned by 90°

Type	B1	D1 Ø	D2 Ø	D3 Ø	H1	H2	L1	L2	L3
MSSD-C	28	22	Pg9	M3	52	28	26.5	5.5	1.5
MSSD-C-M16	27	22	M16x 1.5	M3	52	27	27	5.5	1.5
MSSD-C-TY-24DC	30	22	Pg11	M3	52	30	30	5.5	1.5

Ordering data

Description	Switching status display	Nominal operating voltage	Cable connector	Part No.	Type
Plug socket for valves with D and N1 solenoid coils, 3-pin	-	-	Pg9	34583	MSSD-C
	-	-	M16	539709	MSSD-C-M16
	LED	24 V DC	Pg11	177617	MSSD-C-TY-24DC

Sockets, type A, 4-pin

Technical data

**Plug socket
MSSD-C**

- For valves with D and N1 solenoid coils
- Cable connection via clamping screws or insulation displacement technology



Special features of insulation displacement technology (MSSD-C-S-M16)

With these plug sockets, instead of the cable being connected using individual clamping screws, the flying

leads are pressed into the patented insulation displacement contact when the screw is tightened.

- Strip the cable sheath
- Push it in
- Screw it in tightly
- And you're done!

General technical data		
Type	MSSD-C-4P	MSSD-C-S-M16
Electrical connection	Angled socket	
	4-pin	
	–	Insulation displacement connector
	Square design MSC/MSN1	Square design
	Type A	Type A
Electrical connection	To EN 175301-803	–
Cable connector	Pg9	–
Permissible cable diameter [mm]	6 ... 8	5.5 ... 8
Connection cross section [mm ²]	Max. 1.5	0.5 ... 1
Connection frequency	–	10
Type of mounting	Central screw M3	Central screw M3
Mounting position	Any	Any
Protection class to EN 60529	IP65 (assembled)	IP67 (assembled)

Materials		
Type	MSSD-C-4P	MSSD-C-S-M16
Housing	Plastic	PA
Housing colour	Black	Black
Note on materials	RoHS-compliant	–

Operating and environmental conditions		
Type	MSSD-C-4P	MSSD-C-S-M16
Ambient temperature [°C]	–20 ... +90	–25 ... +90

Sockets, type A, 4-pin

Technical data

Download CAD data → www.festo.com

MSSD-C-4P

1 Insert can be repositioned by 90°

MSSD-C-S-M16

2 Union nut M16x1 3 Connection side can be repositioned by 90°

Type	B1	B2	D1 ∅	D2 ∅	D3 ∅	H1	H2	H3	H4	L1	L2	L3	L4	≙C1
MSSD-C-4P	29.5	27	22.5	Pg9	M3	49	29.5	42	–	27	5.5	1.5	–	–
MSSD-C-S-M16	30	18	19.5	–	M3	54.5	30	24.5	18	40	5.5	1.5	25	13

Ordering data				
Description	Cable connection	Weight [g]	Part No.	Type
Plug socket for valves with D and N1 solenoid coils, 4-pin	–	22	171157	MSSD-C-4P
	Insulation displacement connector	38	192748	MSSD-C-S-M16