

Proportional media valves VZQA



Proportional media valves VZQA

Key features

Function


The proportional media valve is a 2/2-way valve for controlling material flows. It is open in normal position. The shut-off element is a tubular pinch valve sleeve made


from elastomer. When the valve is pressurised, the tubular pinch valve sleeve closes and the material flow is tightly shut off. When pressurisation stops, the valve will open due

to the inherent stress of the pinch valve sleeve or the pressure of the medium. The valve can be used to shut off liquid and dusty media, solids (granulates) and mixtures of

substances. The free passage when the valve is opened ensures minimum flow resistance and prevents the valve becoming blocked or clogged.

General

 G¹/₄, G¹/₂
Clamp to DIN 32676

 Standard nominal flow rate
1,550 l/min,
12,800 l/min

Application

- The valve can be used to shut off media as well as mixtures of substances

Design

- Easy-to-clean, cylindrical housing
- Normally open
- Pinch valve sleeve made from elastomer



Note

Pilot air port 12: G¹/₈ at DN15, M5 at DN6, max permissible thread length 5 mm.

Areas of application

The proportional media valve may only be used in systems where a damaged or leaking seal cartridge cannot pose a hazard to people or property. The media circuit must be

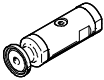

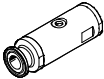

sized for the set pilot pressure. The designer and operator of the system are responsible for the suitability of the product in combination with the respective system as well as for the

resistance of the seal cartridge material to the medium used. Appropriate examinations are generally required to evaluate suitability. The risks associated

with a leaking seal cartridge and the corresponding consequences must be taken into account when planning the system.

Proportional media valves VZQA

Product range overview

Version	Type	Nominal width DN	Process valve connection	Nominal flow rate [l/min]	→ Page/Internet
	VZQA	6	G1/4	1,550	5 
			Clamp to DIN 32676		
	VZQA	15	G1/2	12,800	7 
			Clamp to DIN 32676		

 Note

The hermetic separation between the media circuit and control circuit is no longer guaranteed if wear causes the pinch valve sleeve to leak. The flow medium can then get into the control circuit, from where

it can escape. Any potential hazard (e.g. due to aggressive or hot media) must be ruled out. The compressed air supply to the control valve must be protected against the ingress of the flow medium using a

suitable non-return valve, or a suitable protection against return flow must be integrated in the pilot line in the immediate vicinity of the media valve. Pilot medium can get

into the media circuit if the pinch valve sleeve fails. The media circuit must therefore be sized for the set pilot pressure. Any potential hazard must be ruled out.

Proportional media valves VZQA

Type codes

VZQA - C - M22U - 6 - G G - V4 V4 N - 4

Type

VZQA	Proportional media valve, pneumatically actuated
------	--------------------------------------------------

Product version

C	Easy-to-clean design
---	----------------------

Valve function

M22U	2/2-way valve, normally open
------	------------------------------

Nominal size DN

6	6 mm
15	15 mm

Connection type 1

G	G thread, female
S5	Clamp to DIN 32676

Connection type 2

G	G thread, female
S5	Clamp to DIN 32676

Housing material

V4	Stainless steel
Al	Aluminium

Housing cover material

V4	Stainless steel
Al	Aluminium

Material, shut-off element

N	NBR
E	EPDM

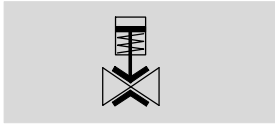
Pressure range of media


4	0 ... 4 bar
---	-------------

Proportional media valves VZQA


Technical data process valve connection G $\frac{1}{4}$ and clamp

Function



 Standard nominal flow rate
1,550 l/min



 Connecting thread
G $\frac{1}{4}$, clamp to DIN 32676

General technical data			
VZQA-...	... -GG-V4V4E-4	... -GG-ALV4N-4	... -S5S5-V4V4E-4
Nominal width DN	6		
Process valve connection	G $\frac{1}{4}$	Clamp to DIN 32676	
Auxiliary pilot air port 12	M5		
Valve function	2/2-way, monostable, open		
Design	Pinch valve, pneumatically actuated		
Type of mounting	In-line installation		
Actuation type	Pneumatic		
Type of control	Externally actuated		
Reset method	Rebound resilience		
Mounting position	Any		
Sealing principle	Soft		
Direction of flow	Reversible		
Max. viscosity [mm ² /s]	4000		
Product weight [g]	157	105.5	215

Operating and environmental conditions			
VZQA-...	... -GG-V4V4E-4	... -GG-ALV4N-4	... -S5S5-V4V4E-4
Switching time ON [ms]	125		
Switching time OFF [ms]	125		
Standard nominal flow rate [l/min]	1,550		
Medium pressure [bar]	0 ... 4		
Nominal pressure of process valve PN	10		
Overload pressure [bar]	7.8		
Pilot pressure [bar]	1 ... 6.5		
Differential pressure [bar]	2.5		
Medium	Compressed air to ISO 8573-1:2010 [-::1]	Compressed air to ISO 8573-1:2010 [-:::]	Compressed air to ISO 8573-1:2010 [-:::1]
	Water		Water
Pilot medium	Compressed air to ISO 8573-1:2010 [7:4:1]	Compressed air to ISO 8573-1:2010 [7:4:4]	Compressed air to ISO 8573-1:2010 [7:4:1]
Ambient temperature [°C]	-5 ... 60		
Temperature of medium [°C]	-5 ... 100	-5 ... 60	-5 ... 100
b value	0.8		
C value [l/sbar]	4.25		
Corrosion resistance class CRC ¹⁾	4		

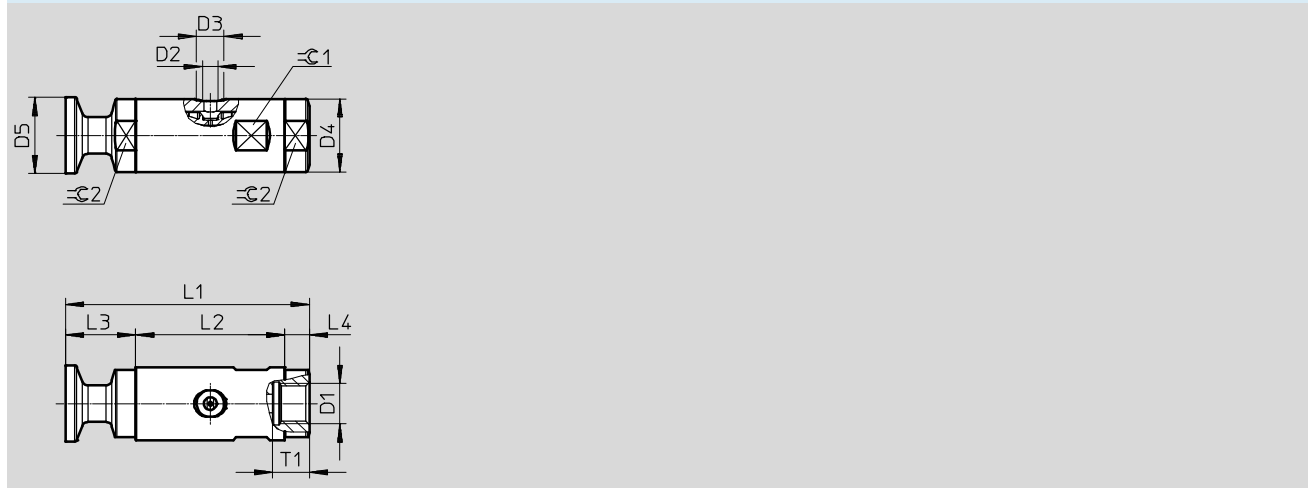
1) Corrosion resistance class 4 to Festo standard 940 070
Components subject to high corrosion stress. Parts used with aggressive media, e.g. in the food or chemical industry. These applications should be supported with special tests with the media if required.

Proportional media valves VZQA

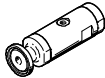
Technical data

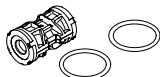
Materials				
VZQA-...	... -GG-V4V4E-4	... -GG-ALV4N-4	... -S5S5-V4V4E-4	Material number
Housing	High-alloy stainless steel	Wrought aluminium alloy	High-alloy stainless steel	1.4435
Housing cover	High-alloy stainless steel	High-alloy stainless steel	High-alloy stainless steel	1.4435
Seals	FPM			-
Shut-off element	EPDM	NBR	EPDM	-
Note on materials	Contains PWIS (paint-wetting impairment substances), RoHS-compliant			-

Dimensions Download CAD data → www.festo.com



Type	D1	D2	D3 ∅	D4 ∅	D5 ∅	L1	L2	L3	L4	T1	⊙1	⊙2
VZQA-C-M22U-6-GG-V4V4E-4	G $\frac{1}{4}$	M5	9	24	-	65	49	8	8	12	22	22
VZQA-C-M22U-6-GG-ALV4N-4					25							
VZQA-C-M22U-6-S5S5-V4V4E-4	-					95		23	23			

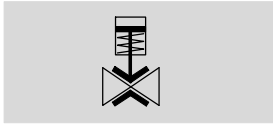
Ordering data			
	Process valve connection	Part No.	Type
	G $\frac{1}{4}$	2931678	VZQA-C-M22U-6-GG-V4V4E-4
		2931679	VZQA-C-M22U-6-GG-ALV4N-4
		2931681	VZQA-C-M22U-6-S5S5-V4V4E-4


Ordering data					
Seal cartridge	Nominal size DN	Information on materials, shut-off element	Note on materials	Part No.	Type
	6	NBR	RoHS-compliant	2392881	VAVC-Q2-M22U-6-N
		EPDM		2392882	VAVC-Q2-M22U-6-E

Proportional media valves VZQA


Technical data process valve connection G $\frac{1}{2}$ and clamp

Function



 Standard nominal flow rate
12,800 l/min



 Connecting thread
G $\frac{1}{2}$, clamp to DIN 32676

General technical data				
VZQA-...	... -GG-ALV4N-4	... -GG-V4V4E-4	... -GG-V4V4N-4	... -S5S5-V4V4E-4
Nominal width DN	15			
Process valve connection	G $\frac{1}{2}$			Clamp to DIN 32676
Auxiliary pilot air port 12	G1/8			
Valve function	2/2-way, monostable, open			
Design	Pinch valve, pneumatically actuated			
Type of mounting	In-line installation			
Actuation type	Pneumatic			
Type of control	Externally actuated			
Reset method	Rebound resilience			
Mounting position	Any			
Sealing principle	Soft			
Direction of flow	Reversible			
Max. viscosity [mm ² /s]	4,000			
Product weight [g]	265	431	431	559

Operating and environmental conditions				
VZQA-...	... -GG-ALV4N-4	... -GG-V4V4E-4	... -GG-V4V4N-4	... -S5S5-V4V4E-4
Switching time ON [ms]	250			
Switching time OFF [ms]	250			
Standard nominal flow rate [l/min]	12,800			
Medium pressure [bar]	0 ... 4			
Nominal pressure of process valve PN	10			
Overload pressure [bar]	7.8			
Pilot pressure [bar]	1 ... 6.5			
Differential pressure [bar]	2.5			
Medium	Compressed air to ISO 8573-1:2010 [:-:1]	Compressed air to ISO 8573-1:2010 [:-:1]	Compressed air to ISO 8573-1:2010 [:-:1]	Compressed air to ISO 8573-1:2010 [:-:1]
		Water		
Pilot medium	Compressed air to ISO 8573-1:2010 [7:4:4]	Compressed air to ISO 8573-1:2010 [7:4:1]	Compressed air to ISO 8573-1:2010 [7:4:4]	Compressed air to ISO 8573-1:2010 [7:4:4]
Ambient temperature [°C]	-5 ... 60			
Temperature of medium [°C]	-5 ... 60	-5 ... 100	-5 ... 60	-5 ... 100
b value	0.85			
C value [l/sbar]	33.44			
Corrosion resistance class CRC ¹⁾	4			

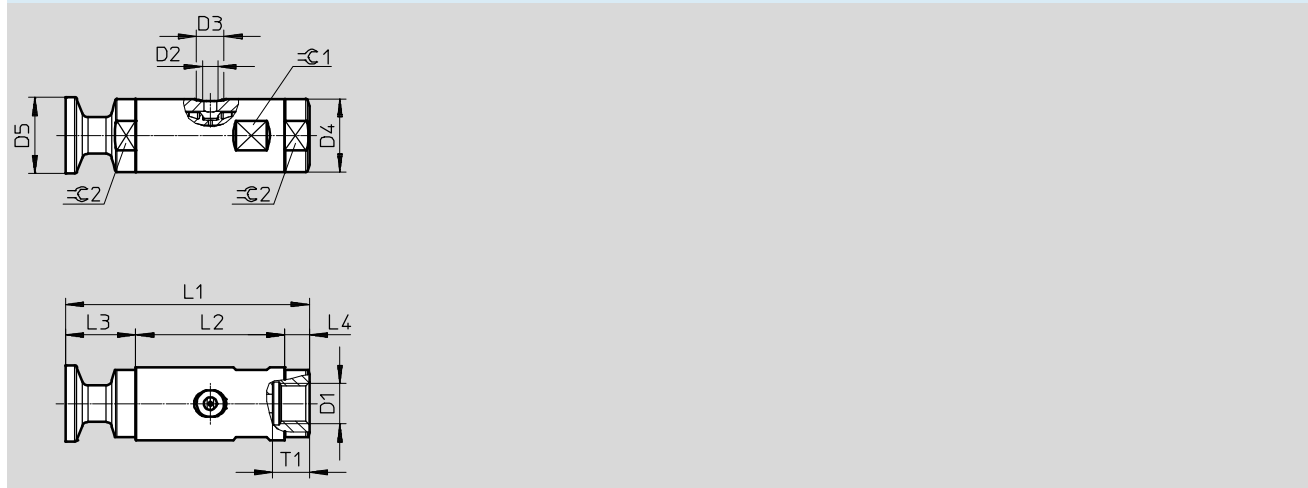
1) Corrosion resistance class 4 to Festo standard 940 070
Components subject to high corrosion stress. Parts used with aggressive media, e.g. in the food or chemical industry. These applications should be supported with special tests with the media if required.

Proportional media valves VZQA

Technical data

Materials					
VZQA-...	... -GG-ALV4N-4	... -GG-V4V4E-4	... -GG-V4V4N-4	... -S5S5-V4V4E-4	Material number
Housing	Wrought aluminium alloy	High-alloy stainless steel			1.4435
Housing cover	High-alloy stainless steel				1.4435
Seals	FPM				-
Shut-off element	NBR	EPDM	NBR	EPDM	-
Note on materials	Contains PWIS (paint-wetting impairment substances), RoHS-compliant				

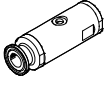
Dimensions Download CAD data → www.festo.com

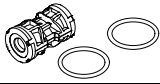


Type	D1	D2	D3 Ø	D4 Ø	D5 Ø	L1	L2	L3	L4	T1	≡C 1	≡C 2
VZQA-C-M22U-15-GG-V4V4E-4	G½	G⅜	15	38	-	95	81	7	7	14	36	36
VZQA-C-M22U-15-GG-V4V4N-4					34							
VZQA-C-M22U-15-GG-ALV4N-4	-					130		24.5	24.5			
VZQA-C-M22U-15-S5S5-V4V4E-4								24.5	24.5			

Proportional media valves VZQA

Technical data

Ordering data			
	Process valve connection	Part No.	Type
	G $\frac{1}{2}$	3022831	VZQA-C-M22U-15-GG-ALV4N-4
		3022829	VZQA-C-M22U-15-GG-V4V4E-4
		3022830	VZQA-C-M22U-15-GG-V4V4N-4
	Clamp to DIN 32676	3022833	VZQA-C-M22U-15-S5S5-V4V4E-4

Ordering data					
Seal cartridge	Nominal size DN	Information on materials, shut-off element	Note on materials	Part No.	Type
	15	NBR	RoHS-compliant	3019151	VAVC-Q2-M22U-15-N
		EPDM		3019148	VAVC-Q2-M22U-15-E

Proportional media valves VZQA

Ordering data – Modular products

M **Mandatory data** →

Module no.	Product type	Valve function	Process valve connection type 1
	Product version	Nominal diameter DN	
2037881	VZQA C	M22U 6 mm 15 mm	– G thread, female – Clamp ferrule to DIN 32676
Order example			
2037881	VZQA – C –		

Ordering table		Condi- tions	Code	Entry code
A series VZQA				
M Module no.	2037881			
Product type	A series VZQA		VZQA	VZQA
Product version	Easy-to-clean design		-C	-
Valve function	2/2-way valve, normally open		-M22U	
Nominal diameter DN	6 mm		-6	
	15 mm		-15	
Process valve connection type 1	G thread, female		-G	
	Clamp ferrule to DIN 32676	1	-S5	

1 S5 Only in combination with (housing cover material) stainless steel (austenitic chromium-nickel-molybdenum/1.4401, 1.4404 (AISI 316L), 1.4408 (V4))

Transfer order code

- - - - -

Proportional media valves VZQA

Ordering data – Modular products

→ **M** Mandatory data

Process valve connection type 2		Housing cover material		Pressure range of media
Housing material		Material, shut-off element		
<ul style="list-style-type: none"> - G thread, female - Clamp ferrule to DIN 32676 	AL V4	AL V4	EPDM NBR	0 ... 4
-	-	-	-	-

Ordering table				
A series VZQA		Condi- tions	Code	Entry code
M	Process valve connection type 2	G thread, female	-G	
		Clamp ferrule to DIN 32676	1 -S5	
Housing material	Aluminium	-Al		
	Stainless steel	-V4		
Housing cover material	Aluminium	-Al		
	Stainless steel	-V4		
Material, shut-off element	EPDM	-E		
	NBR	-N		
Pressure range of media	0 ... 4	-4		

Transfer order code

- - - - -