

Compensating components



Height compensator VAL

Technical data

FESTO

Height compensator VAL

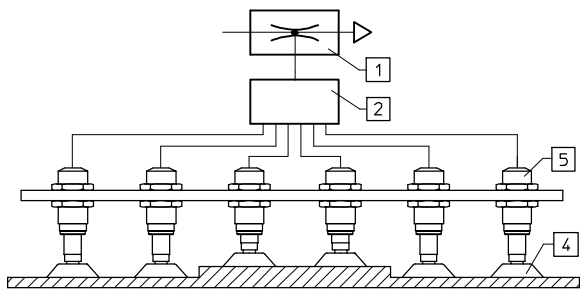
Accessory for suction cups with connection attachments VAS/VASB

→ Internet: vas



Gentle handling of the workpieces by compensating for any excess stroke of the handling device or for tolerance differences in the workpiece thickness.

- 1 Vacuum generator
- 2 Distributor
- 4 Suction cup
- 5 Height compensator



General technical data			
Vacuum port	M5	G1/8	G1/4
Suction cup mounting	M5	G1/8	G1/4
Design	Vacuum port on top		
Mounting position	Any		
Suction cup holder height compensator [mm]	5	10	20

Operating and environmental conditions	
Operating pressure [bar]	-0.95 ... +8
Operating medium	Atmospheric air based on ISO 8573-1:2010 [7:-:-]
Ambient temperature [°C]	-10 ... +60

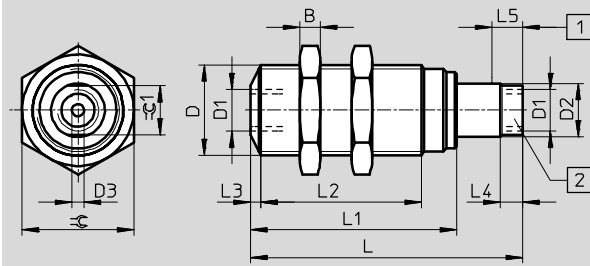
Materials	
Housing, stem	Aluminium
Sleeve, bearing	POM
Hex nut	Galvanised steel
Seals	NBR
Note on materials	Free of copper and PTFE

Height compensator VAL

Technical data

Dimensions

Download CAD data → www.festo.com



- 1 Spring travel for height compensator
- 2 Port for suction gripper

Ordering data

Vacuum port	B	D	D1	D2	D3	L	L1	L2	L3	L4	L5	≈	≈ 1	Part No.	Type
M5	5	M16x1	M5	8	2	46	35	25.5	2	4.5	5	19	7	151209	VAL-M5-5
G ¹ / ₈	6	M22x1.5	G ¹ / ₈	13	3	66	50	39	2.5	5.5	10	27	12	151210	VAL- ¹ / ₈ -10
G ¹ / ₄	8	M26x1.5	G ¹ / ₄	17	4	100	73	60	2.5	6.5	20	32	16	151211	VAL- ¹ / ₄ -20

Angle compensator ESWA

Technical data

FESTO

Angle compensator ESWA

Accessory for suction gripper ESG,
mounted between suction cup holder
and suction cup with connection
attachments

→ Internet: esg



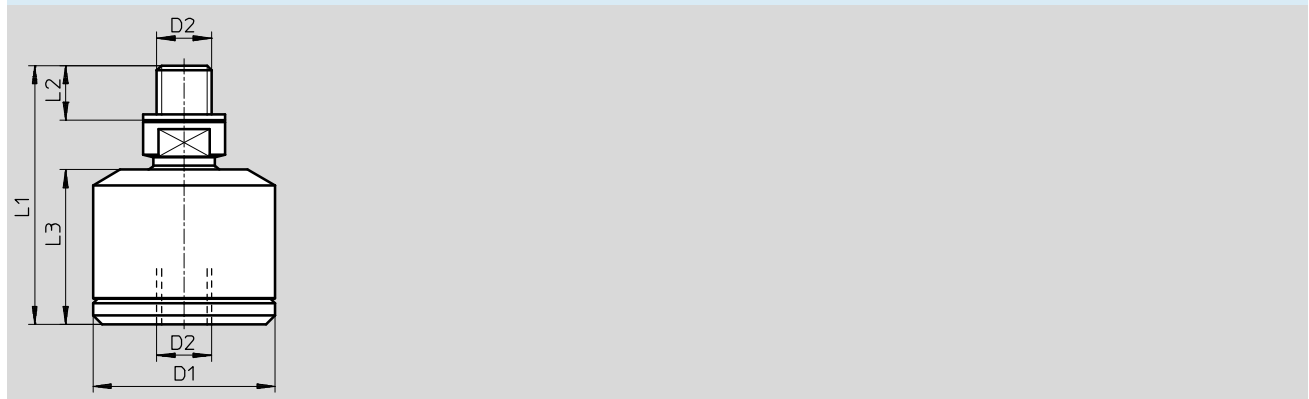
General technical data			
Pneumatic port	M4	M6	M10
Suction cup mounting	M4	M6	M10
Classification of suction cup holders	Size 3	Size 4	Size 5
Design	Ball joint		
Angle compensator +/- [°]	15		
Mounting position	Any		
Type of mounting	With male thread		

Operating and environmental conditions	
Operating pressure [bar]	-0.95 ... +4
Ambient temperature [°C]	0 ... +60
Corrosion resistance class CRC ¹⁾	1

1) Corrosion resistance class CRC 1 to Festo standard FN 940070
Low corrosion stress. For dry indoor applications or transport and storage protection. Also applies to parts behind covers, in the non-visible interior area, and parts which are covered in the application (e.g. drive trunnions).

Materials	
Housing	Aluminium, nickel-plated brass
Seals	NBR
Note on materials	RoHS-compliant

Dimensions Download CAD data → www.festo.com



Ordering data							
Allocation of suction cup holders	D1 ∅	D2	L1	L2	Weight [g]	Part No.	Type
Size 3	15	M4	23	4	9	191205	ESWA-3
Size 4	20	M6	28.5	6	19	191206	ESWA-4
Size 5	28	M10	40.5	10	57	191207	ESWA-5