

Limit switch attachments

FESTO



Limit switch attachments SRBF

FESTO

Type codes

		SRBF	—	CA3	—	YR90	—	MW	—	22A	—	C2M20
Type												
SRBF	Limit switch attachment											
Design												
C	Sensor box											
Mechanical interface												
	None											
A3	Mounting adapter, hole pattern 30x80 mm, for drives with shaft height 20 mm											
A4	Mounting adapter, hole pattern 30x80 mm, for drives with shaft height 30 mm											
A5	Mounting adapter, hole pattern 30x130 mm, for drives with shaft height 30 mm											
A6	Mounting adapter, hole pattern 30x130 mm, for drives with shaft height 50 mm											
Display type												
YR	Yellow/red position indicator											
Measuring range												
90	0 ... 90°											
Sensor principle												
MW	Floating contact, changeover switch											
Nominal operating voltage												
22A	250 V AC											
Electrical connection												
C2	Screw terminal											
Cable connector												
M20	M20x1.5, metal											

Mounting kits DARQ

FESTO

Type codes

		DARQ	–	K	–	A1	–	F05	–	20	–	R1
Type												
DARQ												
Function												
K	Mounting kit											
Drive outlet												
A1	Hole pattern 30x80 mm											
A2	Hole pattern 30x130 mm											
Adapter or reducing outlet												
F05	Hole pattern F05											
Length												
20	20 mm											
30	30 mm											
50	50 mm											
Corrosion protection												
R1	Stainless steel											

Limit switch attachments SRBF

FESTO

Technical data

- Limit switch attachment with two mechanical switches in painted aluminium housing
- With 8-pin terminal block and yellow/red visual indicator



General technical data			
Setting range for angle acquisition		[°]	0 ... 90
Based on standard			ISO 5211, EN 60947-5-1
Type of mounting			Via accessories
			On flange to ISO 5211
Design			Square
Mounting position			Any
Measuring principle			For mechanical, electrical proximity sensors
Switching element function			Changeover switch
Operating voltage range	Direct voltage DC	[V]	0 ... 24
	Alternating voltage AC	[V]	0 ... 250
Max. switching capacity	Direct voltage DC	[W]	36
	Alternating voltage AC	[VA]	1,770
Insulation voltage		[V]	250
Surge capacity		[kV]	4
Connectable nominal conductor cross section		[mm ²]	0.5 ... 1.5
CE mark			To EU Low-Voltage Directive
Paint-wetting impairment substances criterion			Contains paint-wetting impairment substances to FN 942010
Protection class			IP67
Ambient temperature		[°C]	−25 ... +80
Degree of contamination			3

Materials		
1	Housing	Painted die-cast aluminium
2	Screws	High-alloy stainless steel
3	Mounting	High-alloy steel
–	Note on materials	Contains paint-wetting impairment substances, RoHS-compliant

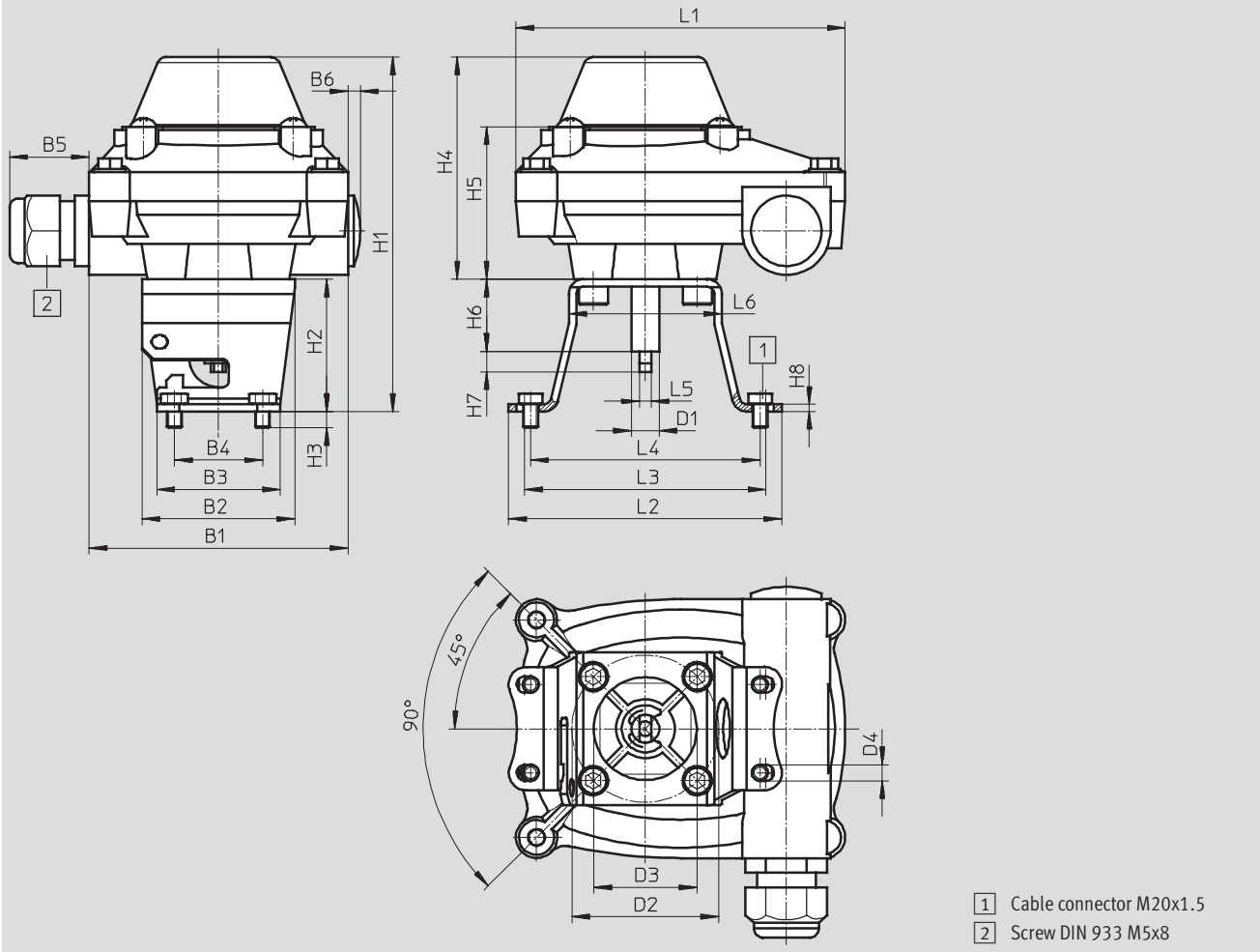
Limit switch attachments SRBF

Technical data

FESTO

Dimensions

Download CAD Data → www.festo.com/us/cad



	B1	B2	B3	B4	B5	B6	D1	D2	D3	D4	H1	H2
SRBF-CA3- ...	88	52	42	30	27	4.3	9.5	50	35	5.5	121	45

	H3	H4	H5	H6	H7	H8	L1	L2	L3	L4	L5	L6
SRBF-CA3- ...	5.5	75.5	51.8	24.5	7	2.5	112	93	82	78	4	52

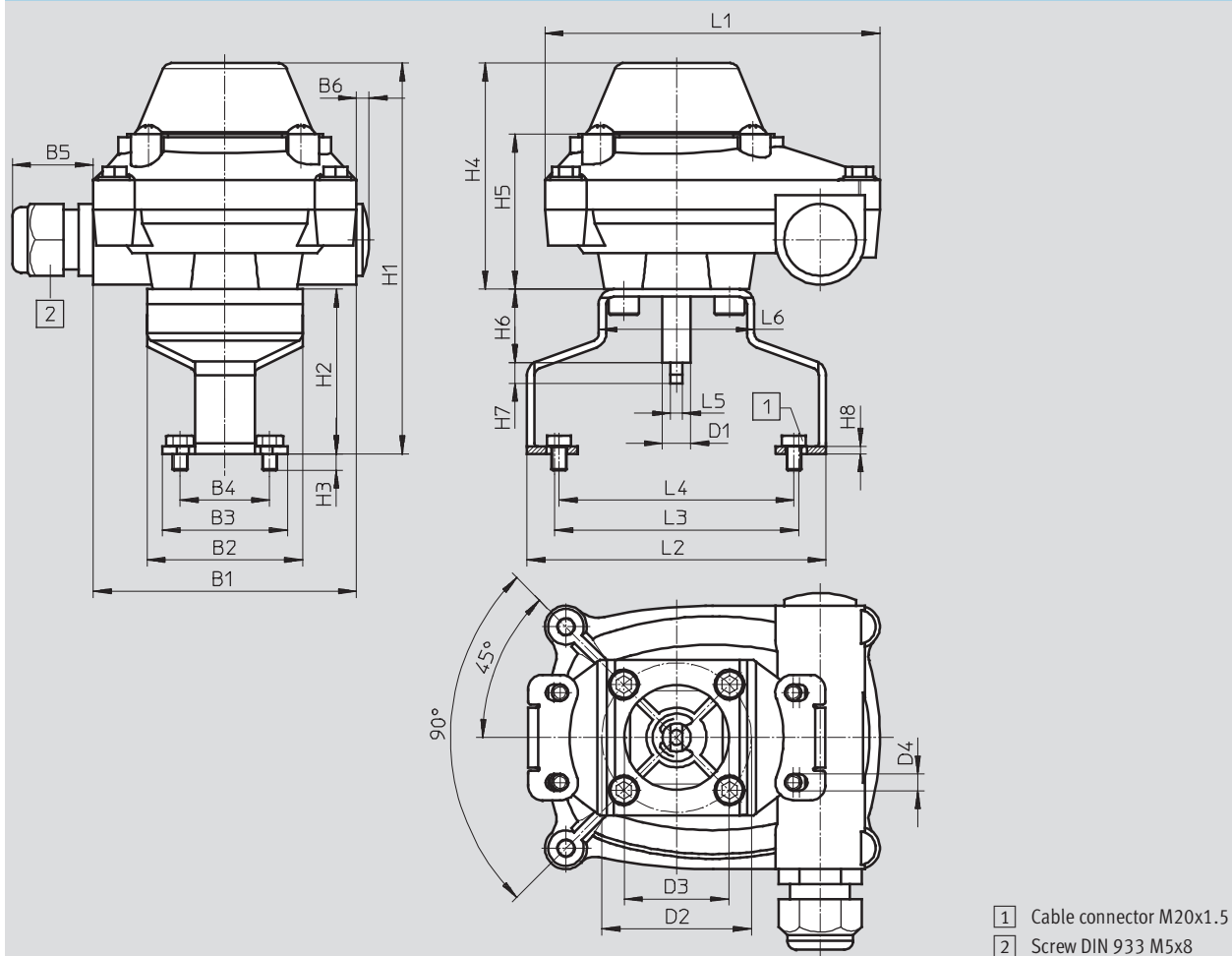
Limit switch attachments SRBF

Technical data

FESTO

Dimensions

Download CAD Data → www.festo.com/us/cad



	B1	B2	B3	B4	B5	B6	D1	D2	D3	D4	H1	H2
SRBF-CA4- ...	88	52	42	30	27	4.3	9.5	50	35	5.5	131	55

	H3	H4	H5	H6	H7	H8	L1	L2	L3	L4	L5	L6
SRBF-CA4- ...	5.5	75.5	51.8	24.5	7	2.5	112	100	81.5	78.5	4	52

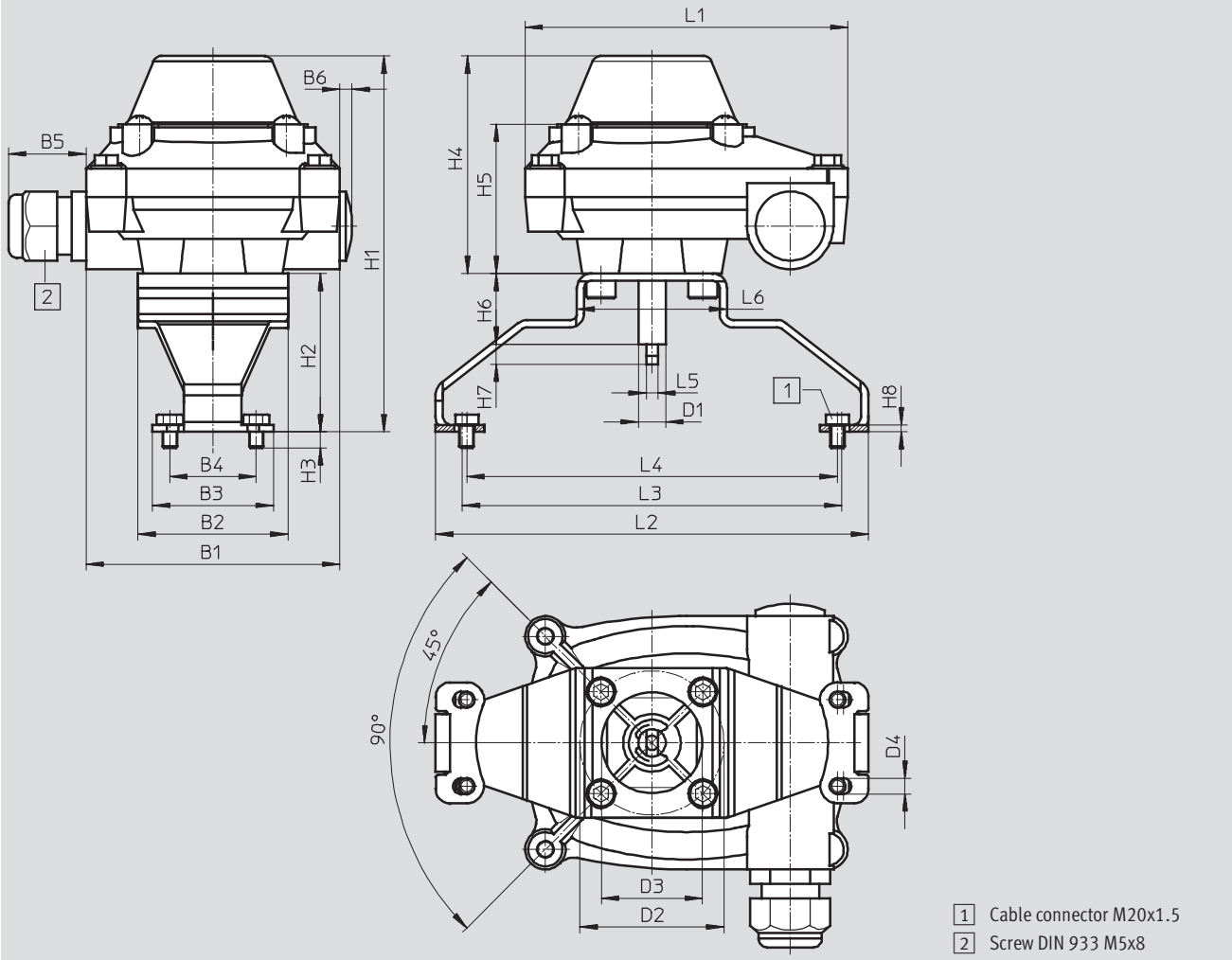
Limit switch attachments SRBF

Technical data

FESTO

Dimensions

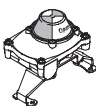
Download CAD Data → www.festo.com/us/cad



	B1	B2	B3	B4	B5	B6	D1	D2	D3	D4	H1	H2
SRBF-CA5- ...	88	52	42	30	27	4.3	9.5	50	35	5.5	131	55
SRBF-CA6- ...	88	52	42	30	27	4.3	9.5	50	35	5.5	151	75

	H3	H4	H5	H6	H7	H8	L1	L2	L3	L4	L5	L6
SRBF-CA5- ...	5.5	75.5	51.8	24.5	7	2.5	112	150.3	131.7	128.7	4	52
SRBF-CA6- ...	5.5	75.5	51.8	24.5	7	2.5	112	150	131.5	128.5	4	52

Ordering data

	Brief description	Mounting adapter dimensions [mm]	Weight [g]	Part No.	Type
	Limit switch attachment with two mechanical switches, including mounting adapter	30x80	655	1152495	SRBF-CA3-YR90-MW-22A-C2M20
		30x80	680	1152496	SRBF-CA4-YR90-MW-22A-C2M20
		30x130	710	1152497	SRBF-CA5-YR90-MW-22A-C2M20
		30x130	725	1152498	SRBF-CA6-YR90-MW-22A-C2M20

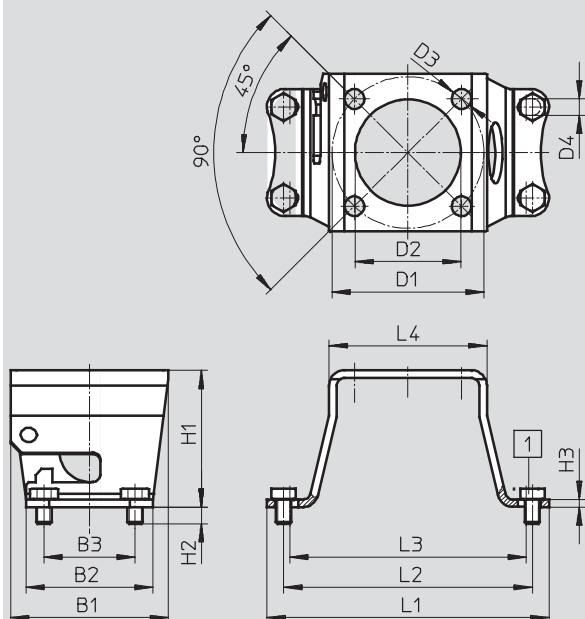
Limit switch attachments SRBF

Technical data

FESTO

Dimensions

Download CAD Data → www.festo.com/us/cad

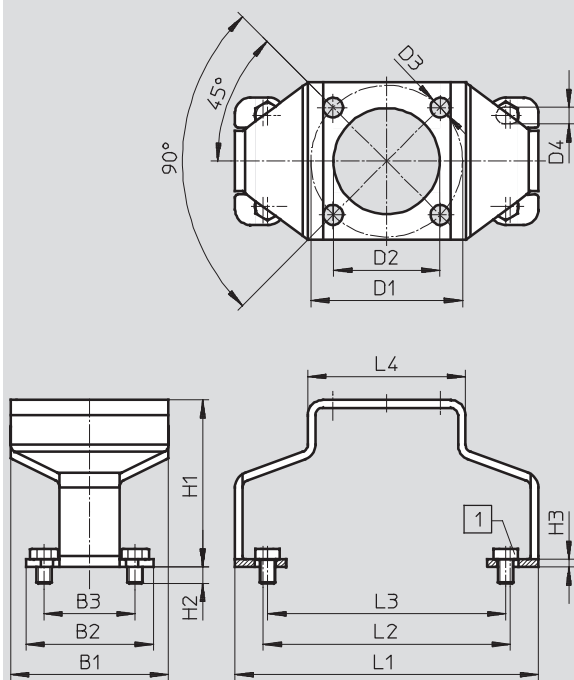


1 Screw DIN 933 M5x8

	B1	B2	B3	D1	D2	D3	D4	H1	H2	H3	L1	L2	L3	L4
DARQ-K-A1- ... 20	52	42	30	50	35	6.5	5.5	45	5.5	2.5	93	82	78	52

Dimensions

Download CAD Data → www.festo.com/us/cad



1 Screw DIN 933 M5x8

	B1	B2	B3	D1	D2	D3	D4	H1	H2	H3	L1	L2	L3	L4
DARQ-K-A1- ... 30	52	42	30	50	35	6.5	5.5	55	5.5	2.5	100	81.5	78.5	52

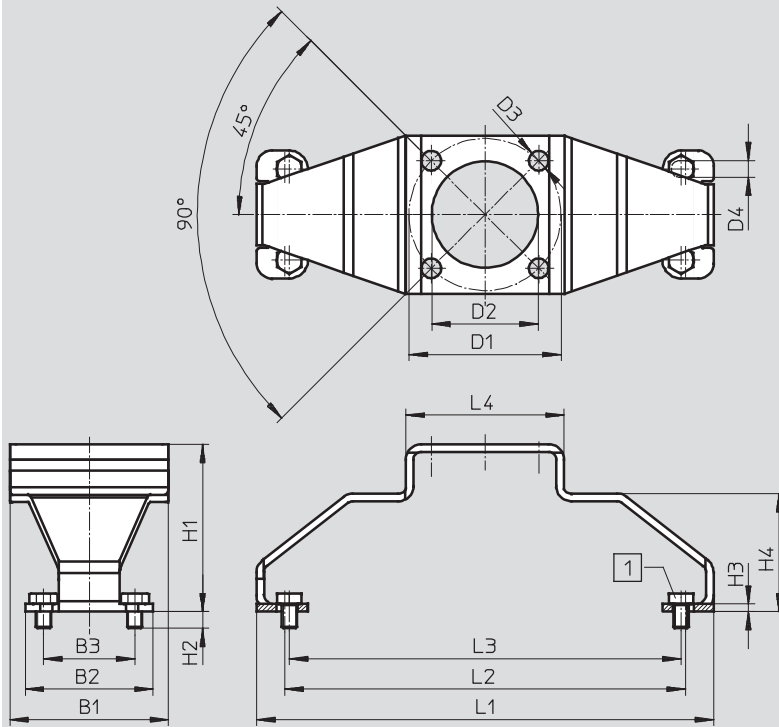
Limit switch attachments SRBF

Technical data

FESTO

Dimensions


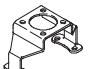


Download CAD Data → www.festo.com/us/cad



1 Screw DIN 933 M5x8

	B1	B2	B3	D1	D2	D3	D4	H1	H2	H3	H4	L1	L2	L3	L4
DARQ-K-A2- ... 30	52	42	30	50	35	6.5	5.5	55	5.5	2.5	38.5	150.3	131.7	128.7	52
DARQ-K-A2- ... 50	52	42	30	50	35	6.5	5.5	75	5.5	2.5	58.5	150	131.5	128.5	52

Ordering data

	Brief description	Materials	CRC ¹⁾	Weight [g]	Part No.	Type
	Mounting adapter, any mounting position	Mounting adapter: High-alloy steel Screws: High-alloy stainless steel Contains paint-wetting impairment substances, RoHS-compliant	1	125	1162556	DARQ-K-A1-F05-20-R1
			1	150	1162558	DARQ-K-A1-F05-30-R1
			1	180	1162559	DARQ-K-A2-F05-30-R1
			1	195	1162560	DARQ-K-A2-F05-50-R1

1) Corrosion resistance class 1 according to Festo standard 940 070

Components subject to low corrosion stress. Transport and storage protection. Parts that do not have primarily decorative surface requirements, e.g. in internal areas that are not visible or behind covers.

Product Range and Company Overview

A Complete Suite of Automation Services

Our experienced engineers provide complete support at every stage of your development process, including: conceptualization, analysis, engineering, design, assembly, documentation, validation, and production.



Custom Automation Components
Complete custom engineered solutions



Custom Control Cabinets
Comprehensive engineering support and on-site services



Complete Systems
Shipment, stocking and storage services

The Broadest Range of Automation Components

With a comprehensive line of more than 30,000 automation components, Festo is capable of solving the most complex automation requirements.



Electromechanical
Electromechanical actuators, motors, controllers & drives



Pneumatics
Pneumatic linear and rotary actuators, valves, and air supply



PLCs and I/O Devices
PLC's, operator interfaces, sensors and I/O devices

Supporting Advanced Automation... As No One Else Can!

Festo is a leading global manufacturer of pneumatic and electromechanical systems, components and controls for industrial automation, with more than 12,000 employees in 56 national headquarters serving more than 180 countries. For more than 80 years, Festo has continuously elevated the state of manufacturing with innovations and optimized motion control solutions that deliver higher performing, more profitable automated manufacturing and processing equipment. Our dedication to the advancement of automation extends beyond technology to the education and development of current and future automation and robotics designers with simulation tools, teaching programs, and on-site services.

Quality Assurance, ISO 9001 and ISO 14001 Certifications

Festo Corporation is committed to supply all Festo products and services that will meet or exceed our customers' requirements in product quality, delivery, customer service and satisfaction.

To meet this commitment, we strive to ensure a consistent, integrated, and systematic approach to management that will meet or exceed the requirements of the ISO 9001 standard for Quality Management and the ISO 14001 standard for Environmental Management.



© Copyright 2008, Festo Corporation. While every effort is made to ensure that all dimensions and specifications are correct, Festo cannot guarantee that publications are completely free of any error, in particular typing or printing errors. Accordingly, Festo cannot be held responsible for the same. For Liability and Warranty conditions, refer to our "Terms and Conditions of Sale", available from your local Festo office. All rights reserved. No part of this publication may be reproduced, distributed, or transmitted in any form or by any means, electronic, mechanical, photocopying or otherwise, without the prior written permission of Festo. All technical data subject to change according to technical update.



Printed on recycled paper at New Horizon Graphic, Inc., FSC certified as an environmentally friendly printing plant.

Festo North America

Festo Regional Contact Center

5300 Explorer Drive
Mississauga, Ontario L4W 5G4
Canada

USA Customers:

For ordering assistance,

Call: 1.800.99.FESTO (1.800.993.3786)

Fax: 1.800.96.FESTO (1.800.963.3786)

Email: customer.service@us.festo.com

For technical support,

Call: 1.866.GO.FESTO (1.866.463.3786)

Fax: 1.800.96.FESTO (1.800.963.3786)

Email: product.support@us.festo.com

Canadian Customers:

Call: 1.877.GO.FESTO (1.877.463.3786)

Fax: 1.877.FX.FESTO (1.877.393.3786)

Email: festo.canada@ca.festo.com

USA Headquarters

Festo Corporation
395 Moreland Road
P.O. Box 18023
Hauppauge, NY 11788, USA
www.festo.com/us

USA Sales Offices

Appleton

North 922 Tower View Drive, Suite N
Greenville, WI 54942, USA

Boston

120 Presidential Way, Suite 330
Woburn, MA 01801, USA

Chicago

1441 East Business Center Drive
Mt. Prospect, IL 60056, USA

Dallas

1825 Lakeway Drive, Suite 600
Lewisville, TX 75057, USA

Detroit – Automotive Engineering Center

2601 Cambridge Court, Suite 320
Auburn Hills, MI 48326, USA

New York

395 Moreland Road
Hauppauge, NY 11788, USA

Silicon Valley

4935 Southfront Road, Suite F
Livermore, CA 94550, USA

United States



USA Headquarters, East: Festo Corp., 395 Moreland Road, Hauppauge, NY 11788
Phone: 1.631.435.0800; Fax: 1.631.435.8026;
Email: info@festo-usa.com www.festo.com/us

Canada



Headquarters: Festo Inc., 5300 Explorer Drive, Mississauga, Ontario L4W 5G4
Phone: 1.905.624.9000; Fax: 1.905.624.9001;
Email: festo.canada@ca.festo.com www.festo.ca

Mexico



Headquarters: Festo Pneumatic, S.A., Av. Ceylán 3, Col. Tequesquahuac,
54020 Tlalneapantla, Edo. de México
Phone: 011 52 [55] 53 21 66 00; Fax: 011 52 [55] 53 21 66 65;
Email: festo.mexico@mx.festo.com www.festo.com/mx

Central USA

Festo Corporation
1441 East Business
Center Drive
Mt. Prospect, IL 60056, USA
Phone: 1.847.759.2600
Fax: 1.847.768.9480



Western USA

Festo Corporation
4935 Southfront Road,
Suite F
Livermore, CA 94550, USA
Phone: 1.925.371.1099
Fax: 1.925.245.1286



Festo Worldwide

Argentina Australia Austria Belarus Belgium Brazil Bulgaria Canada Chile China Colombia Croatia Czech Republic Denmark
Estonia Finland France Germany Great Britain Greece Hong Kong Hungary India Indonesia Iran Ireland Israel Italy Japan Latvia
Lithuania Malaysia Mexico Netherlands New Zealand Norway Peru Philippines Poland Romania Russia Serbia Singapore
Slovakia Slovenia South Africa South Korea Spain Sweden Switzerland Taiwan Thailand Turkey Ukraine United States Venezuela

www.festo.com