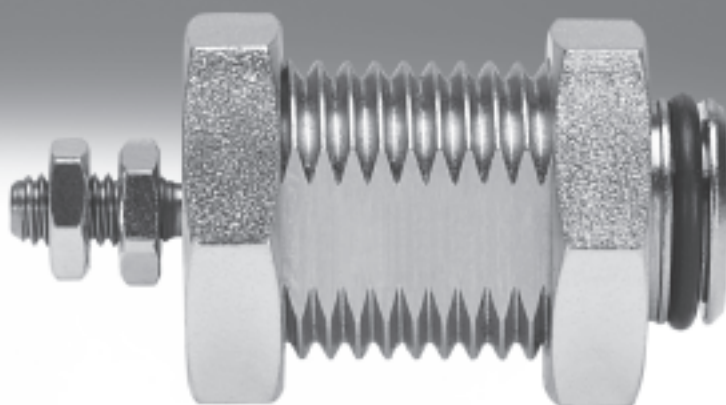


Cartridge cylinders EGZ

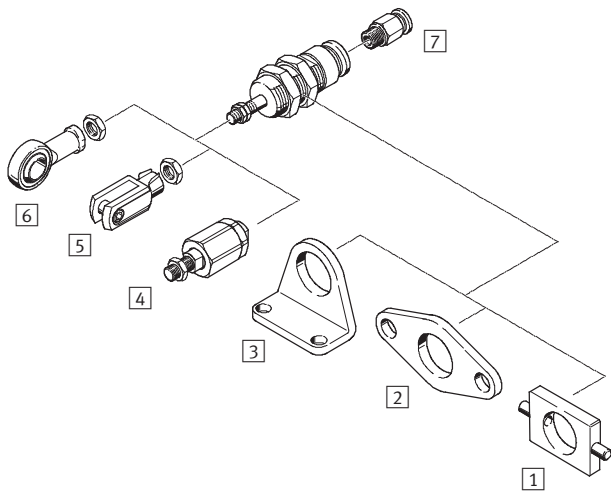
FESTO



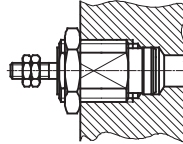
Cartridge cylinders EGZ

Peripherals overview and type codes

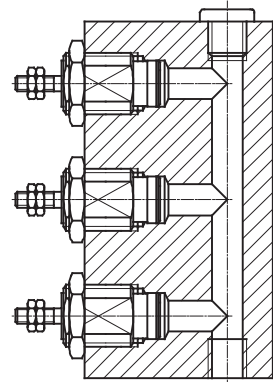
FESTO



Installation without mounting attachments



Minimal installation space required



| Mounting attachments and accessories | | | | | |
|--------------------------------------|---|------------------|-------------------|-------------------|-----------------|
| | Brief description | Piston Ø 6 mm | Piston Ø 10 mm | Piston Ø 16 mm | → Page/Internet |
| 1 | Swivel mounting WBN For cylinder housing between two hex nuts | – | ■ | ■ | 6 |
| 2 | Flange mounting FBN For cylinder housing between two hex nuts | – | ■ | ■ | 5 |
| 3 | Foot mounting HBN For cylinder housing between two hex nuts | – | ■ | ■ | 5 |
| 4 | Self-aligning rod coupler FK For compensating radial and angular deviations | – | ■ | ■ | 6 |
| 5 | Rod clevis SG Permits a swivelling movement of the cylinder in one plane | – | ■ | – | 6 |
| 6 | Rod eye SGS With spherical bearing | – | ■ | – | 6 |
| 7 | Push-in fitting QS For connecting compressed air tubing with standard external diameters | ■ | ■ | ■ | quick star |

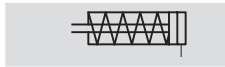
| | |
|------------------------|--------------------|
| EGZ – 16 – 10 | |
| Type | |
| Single acting, pushing | |
| EGZ | Cartridge cylinder |
| Piston Ø [mm] | |
| Stroke [mm] | |

Cartridge cylinders EGZ

Technical data

FESTO

Function



- N- Diameter
6 ... 16 mm
- T- Stroke length
5 ... 15 mm



| General technical data | | | |
|-------------------------------|---|----|----|
| Piston Ø | 6 | 10 | 16 |
| Pneumatic connection | M3 | M5 | M5 |
| End of piston rod Male thread | M3 | M4 | M5 |
| Operating medium | Compressed air in accordance with ISO 8573-1:2010 [7:-:-] | | |
| Constructional design | Piston | | |
| | Piston rod | | |
| Cushioning | None | | |
| Position sensing | None | | |
| Type of mounting | With lock nut | | |
| | With accessories | | |
| Mounting position | Any | | |

| Operating and environmental conditions | | | |
|--|-------------|----|----|
| Piston Ø | 6 | 10 | 16 |
| Operating pressure [bar] | 1.5 ... 8 | | |
| Ambient temperature [°C] | -20 ... +80 | | |

| Forces and permitted applied load [N] | | | | | | | | | |
|--|------|-----|-----|------|-----|----|------|-----|-----|
| Piston Ø | 6 | | | 10 | | | 16 | | |
| Stroke | 5 | 10 | 15 | 5 | 10 | 15 | 5 | 10 | 15 |
| Theoretical force at 6 bar, advancing | 14 | | | 42 | | | 109 | | |
| Spring return force | 1.5 | 2.1 | 1.6 | 4 | 3.5 | 3 | 10 | 8.8 | 7.5 |
| Maximum applied load at the piston rod | 0.10 | | | 0.15 | | | 0.20 | | |

| Materials | |
|----------------|--|
| Sectional view | |
| | |

| Cylinder | |
|---------------------|----------------------|
| 1 Housing | Brass, nickel-plated |
| 2 Cover | Polyacetal |
| 3 Piston rod | High-alloy steel |
| - Note on materials | Conforms to RoHS |

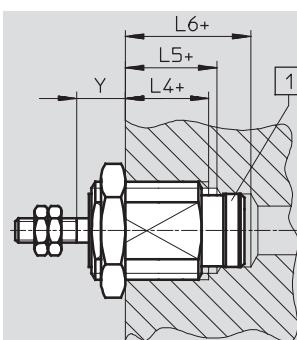
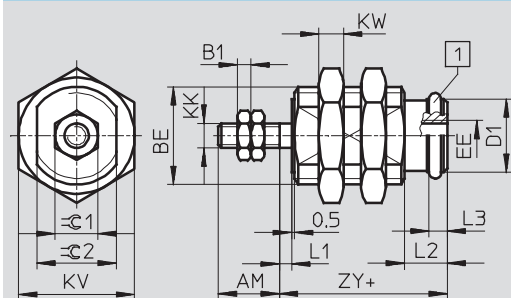
Cartridge cylinders EGZ

Technical data

FESTO

Dimensions

Download CAD Data → www.festo.com/us/cad



1 O-ring
+ = plus stroke length

| Ø [mm] | AM | B1 | BE | D1 Ø H7/f8 | EE | KK | KV h13 | KW | L1 | L2 | L3 |
|-----------------|----|-----|---------|------------------|----|----|-----------|-----|-----|----|-----|
| 6 ¹⁾ | 7 | 1.8 | M10x1 | 7.6 | M3 | M3 | 13 | 3.5 | 1.5 | 6 | 2.4 |
| 6 ²⁾ | | | | | | | | | | | |
| 10 | 10 | 2.2 | M16x1.5 | 12 | M5 | M4 | 19 | 4 | 2 | 7 | 3 |
| 16 | 12 | 2.7 | M22x1.5 | 18.5 | M5 | M5 | 27 | 5 | 2 | 9 | 3.5 |

| Ø [mm] | L4 - Y +1 | L5 - Y -1 | L6 - Y +1 | Y | | ZY | C1 h13 | C2 h13 |
|-----------------|-----------------|-----------------|-----------------|------|------------------|------|-----------|-----------|
| | | | | min. | max. + stroke | | | |
| 6 ¹⁾ | 9 | 11 | 15.5 | 6 | 5 | 15 | 5.5 | 8 |
| 6 ²⁾ | 11 | 13 | 17.5 | 6 | 7 | 17 | | |
| 10 | 11 | 13 | 18.5 | 7 | 6 | 17.5 | 7 | 13 |
| 16 | 13 | 16 | 21 | 8 | 6 | 20.5 | 8 | 19 |

- 1) 5 mm stroke
2) 10 and 15 mm stroke

Ordering data¹⁾

| Stroke [mm] | Part No. | Type | Stroke [mm] | Part No. | Type |
|----------------|----------|-----------|----------------|----------|-----------|
| Piston Ø 6 mm | | | Piston Ø 10 mm | | |
| 5 | 15 033 | EGZ-6-5 | 5 | 15 036 | EGZ-10-5 |
| 10 | 15 034 | EGZ-6-10 | 10 | 15 037 | EGZ-10-10 |
| 15 | 15 035 | EGZ-6-15 | 15 | 15 038 | EGZ-10-15 |
| Piston Ø 16 mm | | | | | |
| 5 | 15 039 | EGZ-16-5 | | | |
| 10 | 15 040 | EGZ-16-10 | | | |
| 15 | 15 041 | EGZ-16-15 | | | |

1) Two hex nuts each for the male cylinder thread and for the piston thread are included in the scope of delivery.

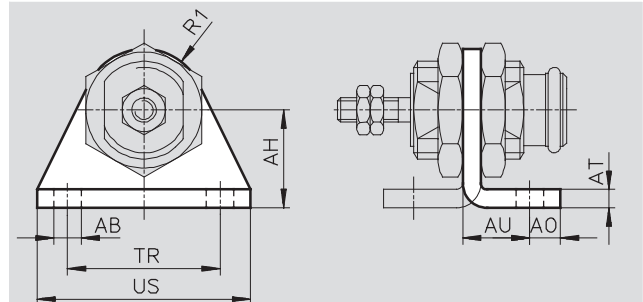
Cartridge cylinders EGZ

Accessories

FESTO

Foot mounting HBN for piston Ø 10, 16 mm

Material:
Steel
Free of copper and PTFE
RoHS-compliant



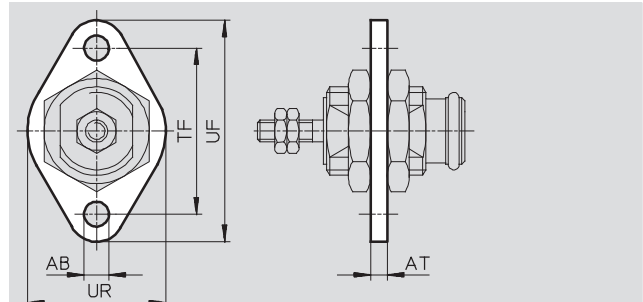
| Dimensions and ordering data | | | | | | | | | | | | | |
|------------------------------|------------------------|---------|----|----|----|----|----|----|----|-------------------|-------------------|----------|-------------|
| For Ø | Minimum stroke lengths | AB Ø | AH | AO | AT | AU | R1 | TR | US | CRC ¹⁾ | Weight [g] | Part No. | Type |
| 10 | 5 | 5.5 | 20 | 6 | 4 | 14 | 13 | 32 | 42 | 2 | 40 | 5 125 | HBN-12/16X1 |
| 16 | 7 | 6.6 | 25 | 8 | 5 | 17 | 20 | 40 | 54 | 2 | 90 | 5 127 | HBN-20/25X1 |

1) Corrosion resistance class 2 according to Festo standard 940 070

Components requiring moderate corrosion resistance. Externally visible parts with primarily decorative surface requirements which are in direct contact with a surrounding industrial atmosphere or media such as cooling or lubricating agents.

Flange mounting FBN for piston Ø 10, 16 mm

Material:
Steel
Free of copper and PTFE



| Dimensions and ordering data | | | | | | | | | | |
|------------------------------|------------------------|---------|----|----|----|----|-------------------|-------------------|----------|-----------|
| For Ø | Minimum stroke lengths | AB Ø | AT | TF | UF | UR | CRC ¹⁾ | Weight [g] | Part No. | Type |
| 10 | 5 | 5.5 | 4 | 40 | 53 | 30 | 2 | 26 | 5 130 | FBN-12/16 |
| 16 | 7 | 6.6 | 5 | 50 | 68 | 40 | 2 | 52 | 5 131 | FBN-20/25 |

1) Corrosion resistance class 2 according to Festo standard 940 070

Components requiring moderate corrosion resistance. Externally visible parts with primarily decorative surface requirements which are in direct contact with a surrounding industrial atmosphere or media such as cooling or lubricating agents.

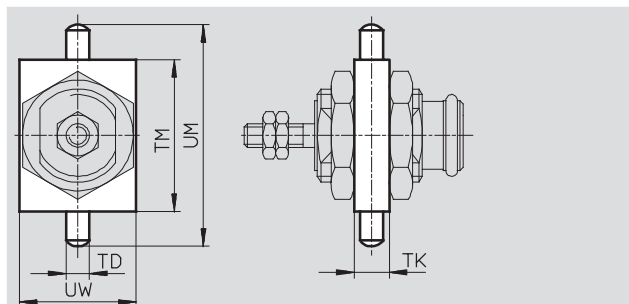
Cartridge cylinders EGZ

Accessories


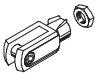
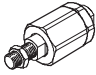
FESTO

Swivel mounting WBN for piston Ø 10, 16 mm

Material:
Tempered steel
Free of copper and PTFE
RoHS-compliant



| Dimensions and ordering data | | | | | | | | |
|------------------------------|------------------------|---------------|----|----|----|----|---------------|------------------------|
| For Ø | Minimum stroke lengths | TD Ø m6 | TK | TM | UM | UW | Weight [g] | Part No. Type |
| 10 | 9 | 6 | 8 | 38 | 58 | 25 | 50 | 8 609 WBN-12/16 |
| 16 | 10 | 6 | 8 | 46 | 66 | 30 | 70 | 8 610 WBN-20/25 |

| Ordering data – Piston rod attachments | | | | Technical data → Internet: piston-rod attachment | | | |
|---|-------|---------------|---------------|---|-------|--------------|--------------|
| Designation | For Ø | Part No. | Type | Designation | For Ø | Part No. | Type |
| Rod eye SGS | | | | Rod clevis SG | | | |
|  | 10 | 9 253 | SGS-M4 |  | 10 | 6 532 | SG-M4 |
| Self-aligning rod coupler FK | | | | | | | |
|  | 10 | 6 528 | FK-M4 | | | | |
| | 16 | 30 984 | FK-M5 | | | | |

Product Range and Company Overview

A Complete Suite of Automation Services

Our experienced engineers provide complete support at every stage of your development process, including: conceptualization, analysis, engineering, design, assembly, documentation, validation, and production.



Custom Automation Components
Complete custom engineered solutions



Custom Control Cabinets
Comprehensive engineering support and on-site services



Complete Systems
Shipment, stocking and storage services

The Broadest Range of Automation Components

With a comprehensive line of more than 30,000 automation components, Festo is capable of solving the most complex automation requirements.



Electromechanical
Electromechanical actuators, motors, controllers & drives



Pneumatics
Pneumatic linear and rotary actuators, valves, and air supply



PLCs and I/O Devices
PLC's, operator interfaces, sensors and I/O devices

Supporting Advanced Automation... As No One Else Can!

Festo is a leading global manufacturer of pneumatic and electromechanical systems, components and controls for industrial automation, with more than 12,000 employees in 56 national headquarters serving more than 180 countries. For more than 80 years, Festo has continuously elevated the state of manufacturing with innovations and optimized motion control solutions that deliver higher performing, more profitable automated manufacturing and processing equipment. Our dedication to the advancement of automation extends beyond technology to the education and development of current and future automation and robotics designers with simulation tools, teaching programs, and on-site services.

Quality Assurance, ISO 9001 and ISO 14001 Certifications

Festo Corporation is committed to supply all Festo products and services that will meet or exceed our customers' requirements in product quality, delivery, customer service and satisfaction.

To meet this commitment, we strive to ensure a consistent, integrated, and systematic approach to management that will meet or exceed the requirements of the ISO 9001 standard for Quality Management and the ISO 14001 standard for Environmental Management.



© Copyright 2008, Festo Corporation. While every effort is made to ensure that all dimensions and specifications are correct, Festo cannot guarantee that publications are completely free of any error, in particular typing or printing errors. Accordingly, Festo cannot be held responsible for the same. For Liability and Warranty conditions, refer to our "Terms and Conditions of Sale", available from your local Festo office. All rights reserved. No part of this publication may be reproduced, distributed, or transmitted in any form or by any means, electronic, mechanical, photocopying or otherwise, without the prior written permission of Festo. All technical data subject to change according to technical update.



Printed on recycled paper at New Horizon Graphic, Inc., FSC certified as an environmentally friendly printing plant.

Festo North America

Festo Regional Contact Center

5300 Explorer Drive
Mississauga, Ontario L4W 5G4
Canada

USA Customers:

For ordering assistance,

Call: 1.800.99.FESTO (1.800.993.3786)

Fax: 1.800.96.FESTO (1.800.963.3786)

Email: customer.service@us.festo.com

For technical support,

Call: 1.866.GO.FESTO (1.866.463.3786)

Fax: 1.800.96.FESTO (1.800.963.3786)

Email: product.support@us.festo.com

Canadian Customers:

Call: 1.877.GO.FESTO (1.877.463.3786)

Fax: 1.877.FX.FESTO (1.877.393.3786)

Email: festo.canada@ca.festo.com

USA Headquarters

Festo Corporation
395 Moreland Road
P.O. Box 18023
Hauppauge, NY 11788, USA
www.festo.com/us

USA Sales Offices

Appleton

North 922 Tower View Drive, Suite N
Greenville, WI 54942, USA

Boston

120 Presidential Way, Suite 330
Woburn, MA 01801, USA

Chicago

1441 East Business Center Drive
Mt. Prospect, IL 60056, USA

Dallas

1825 Lakeway Drive, Suite 600
Lewisville, TX 75057, USA

Detroit – Automotive Engineering Center

2601 Cambridge Court, Suite 320
Auburn Hills, MI 48326, USA

New York

395 Moreland Road
Hauppauge, NY 11788, USA

Silicon Valley

4935 Southfront Road, Suite F
Livermore, CA 94550, USA

United States



USA Headquarters, East: Festo Corp., 395 Moreland Road, Hauppauge, NY 11788
Phone: 1.631.435.0800; Fax: 1.631.435.8026;
Email: info@festo-usa.com www.festo.com/us

Canada



Headquarters: Festo Inc., 5300 Explorer Drive, Mississauga, Ontario L4W 5G4
Phone: 1.905.624.9000; Fax: 1.905.624.9001;
Email: festo.canada@ca.festo.com www.festo.ca

Mexico



Headquarters: Festo Pneumatic, S.A., Av. Ceylán 3, Col. Tequesquahuac,
54020 Tlalneapantla, Edo. de México
Phone: 011 52 [55] 53 21 66 00; Fax: 011 52 [55] 53 21 66 65;
Email: festo.mexico@mx.festo.com www.festo.com/mx

Central USA

Festo Corporation
1441 East Business
Center Drive
Mt. Prospect, IL 60056, USA
Phone: 1.847.759.2600
Fax: 1.847.768.9480



Western USA

Festo Corporation
4935 Southfront Road,
Suite F
Livermore, CA 94550, USA
Phone: 1.925.371.1099
Fax: 1.925.245.1286



Festo Worldwide

Argentina Australia Austria Belarus Belgium Brazil Bulgaria Canada Chile China Colombia Croatia Czech Republic Denmark
Estonia Finland France Germany Great Britain Greece Hong Kong Hungary India Indonesia Iran Ireland Israel Italy Japan Latvia
Lithuania Malaysia Mexico Netherlands New Zealand Norway Peru Philippines Poland Romania Russia Serbia Singapore
Slovakia Slovenia South Africa South Korea Spain Sweden Switzerland Taiwan Thailand Turkey Ukraine United States Venezuela

www.festo.com