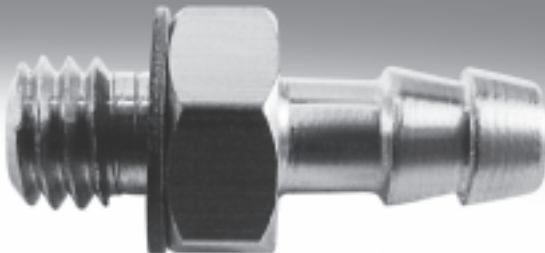









Barbed fittings



Barbed fittings





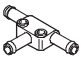
Product range overview

FESTO

Design	Version	Type	Connection D1			Connection D2		→ Page/ Internet
			M thread	G thread	Barbed connector	Barbed connector		
Straight design	Barbed fitting with male thread and external hex							
		N	M5	–	–	3.6	6	
						4.8		
	Barbed fitting with male thread and external hex							
		CN	M3	–	–	2.6; 3.4	6	
			M5	–		2.95; 3.6; 4.8		
			–	G $\frac{1}{8}$		3.6; 4.8; 7		
			–	G $\frac{1}{4}$		4.8; 7		
			–	G $\frac{3}{8}$		7		
	Barbed bulkhead fitting							
		SCN	–	–	2.95	–	7	
					3.6			
					4.8			
					7			
	Barbed tubing connector							
	RTU	–	–	2.95	2.95	7		
					3.6		2.95	
					3.6		3.6	
					3.6		4.8	
					4.8		4.8	
					4.8		7	
				7	7			
L-shape	Barbed L-fitting with male thread – rotatable 360°							
		LCN	M3	–	–	2.95; 3.6	8	
			M5	–		2.95; 3.6; 4.8		
			–	G $\frac{1}{8}$		3.6; 4.8; 7		
			–	G $\frac{1}{4}$		4.8; 7		
			–	G $\frac{3}{8}$		7		
	Barbed L-fitting with male thread – extended housing section rotatable 360°							
		LCNH	M5	–		2.95; 3.6; 4.8	9	
			–	G $\frac{1}{8}$		3.6; 4.8; 7		
			–	G $\frac{1}{4}$		4.8; 7		
			–	G $\frac{3}{8}$		7		
	Barbed L-connector							
	L-PK	–	–	2.95	–	9		
							3.6	
							4.8	
							7	

Barbed fittings


Product range overview

Design	Version	Type	Connection D1			Connection D2	→ Page/ Internet
			M thread	G thread	Barbed connector	Barbed connector	
T-shape	Barbed T-fitting with male thread – rotatable 360°						
		TCN	M3	–	–	2.95; 3.6	10
			M5	–		2.95; 3.6; 4.8	
			–	G1/8		3.6; 4.8; 7	
			–	G1/4		4.8; 7	
			–	G3/8		7	
	Barbed T-connector						
		T-PK	–	–	2.95	–	10
			–	–	3.6		
			–	–	4.8		
–			–	7			
V-shape	Barbed V-connector						
		V-PK	–	–	2.95	–	11
			–	–	3.6		
			–	–	4.8		
			–	–	7		
Y-shape	Barbed Y-connector						
		Y-PK	–	–	2.95	–	11
			–	–	3.6		
			–	–	4.8		
			–	–	7		
	Barbed T-connector						
		FCN	–	–	2.95	2.95	12
			–	–	3.6	3.6	
			–	–	3.6	2.95	
			–	–	4.8	4.8	
			–	–	4.8	3.6	
			–	–	7	7	
			–	–	7	4.8	

Barbed fittings CRCN, stainless steel




Product range overview



Design	Version	Type	Connection D1			Connection D2	→ Page/ Internet
			M thread	G thread	Barbed connector	Tubing O.D.	
Straight design		CRCN	Barbed fitting with male thread and external hex – stainless steel				
			M5	–	–	3, 4, 6	13
			–	G $\frac{1}{8}$	–	4, 6, 8	
			–	G $\frac{1}{4}$	–	6, 8	
			–	G $\frac{3}{8}$	–	8	

Barbed hose fittings C-P/N-P, for hose clip

Product range overview

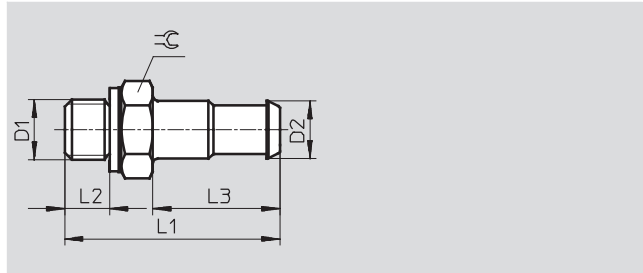
Design	Version	Type	Connection D1			Connection D2	→ Page/ Internet
			G thread	R thread	NPT thread	Barbed connector	
Barbed hose fitting							
	C-...-P		G1/8	-	-	7	15
			G1/4	-	-	7; 10	
			G3/8	-	-	7; 10	
			G1/2	-	-	14.8	
Barbed hose fitting with sealing ring (aluminium and brass design)							
	N-...-P N-...-MS		G1/8	-	-	7	16
			G1/4	-	-	7; 10	
			G3/8	-	-	7; 10; 14.8	
			G1/2	-	-	10.3; 14.8	
			G3/4	-	-	14.8; 20.8	
			-	R1	-	20.8	
			-	-	NPT3/4-14	20.8	
	-	-	NPT1-11 1/2	20.8			
Hose clip to DIN 3017							
	SK						17

Barbed fittings N/CN

Technical data

Barbed fitting N-...-PK with sealing ring

Material:
Brass

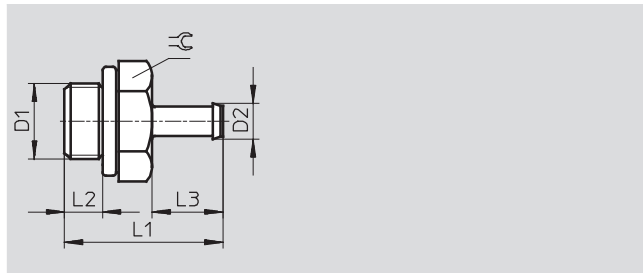


Dimensions and ordering data											
Connection	Nominal size	Barbed connector	For tubing I.D.	L1	L2	L3	≈C	Weight	Part No.	Type	PU ¹⁾
D1	[mm]	D2						[g]			
M5	2.5	3.6	3	16	3.5	8.5	7	1	4446	N-M5-PK-3	10
	2.5	4.8	4	18	3.5	10.5	7	2	4902	N-M5-PK-4	10

1) Packaging unit quantity

Barbed fitting CN-...-PK with sealing ring

Material:
M3 thread: High-alloy steel
M5 thread: Steel
G thread: Aluminium



Dimensions and ordering data											
Connection	Nominal size	Barbed connector	For tubing I.D.	L1	L2	L3	≈C	Part No.	Type	PU ¹⁾	
D1	[mm]	D2									
M thread											
M3	1.5	2.6	2	10	3	5	4.5	15871	CN-M3-PK-2	10	
	1.5	3.4	3	11	3	6	4.5	15872	CN-M3-PK-3	10	
M5	1.5	2.95	2	13.8	3.8	6	7	19521	CN-M5-PK-2	10	
	2.5	3.6	3	17.5	3.8	9.7	7	12255	CN-M5-PK-3	10	
	2.5	4.8	4	19.5	3.8	11.7	7	12256	CN-M5-PK-4	10	
G thread											
G ¹ / ₈	2.5	3.6	3	20.2	4.9	9.7	13	11944	CN- ¹ / ₈ -PK-3	10	
	3.2	4.8	4	22.2	4.9	11.7	13	11945	CN- ¹ / ₈ -PK-4	10	
	5.3	7	6	24.5	4.9	14	13	11946	CN- ¹ / ₈ -PK-6	10	
G ¹ / ₄	3.2	4.8	4	24.7	5.8	11.7	17	11947	CN- ¹ / ₄ -PK-4	10	
	5.3	7	6	27	5.8	14	17	11948	CN- ¹ / ₄ -PK-6	10	
G ³ / ₈	5.3	7	6	28	6.8	14	19	11949	CN- ³ / ₈ -PK-6	10	

1) Packaging unit quantity

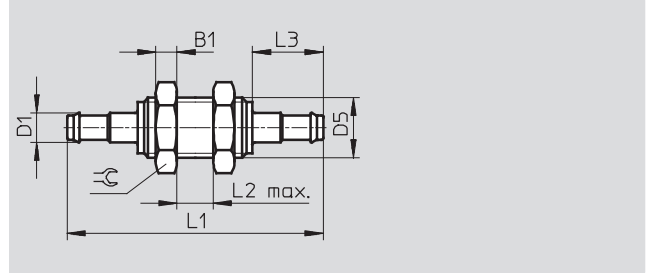
Barbed fittings N/CN

Technical data

FESTO

Barbed bulkhead fitting SCN-PK

Material:
Aluminium



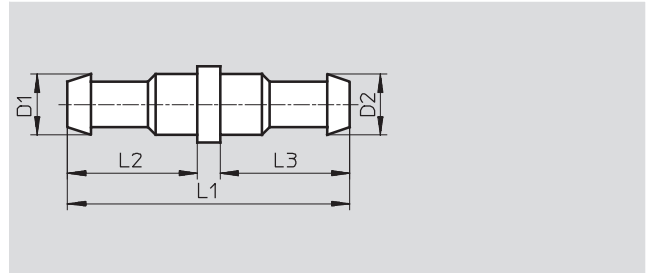
Dimensions and ordering data												
Barbed connector D1	Nominal size [mm]	For tubing I.D.	D5	B1	L1	L2	L3	∅	Weight [g]	Part No.	Type	PU ¹⁾
2.95	1.5	2	M4	2.2	23.4	6	6	7	1	19528	SCN-PK-2	10
3.6	1.9	3	M6x0.75	3.2	35.3	8	9.7	10	4	11972	SCN-PK-3	10
4.8	2.8	4	M10x1	3.5	42.4	10	11.7	13	7	11973	SCN-PK-4	10
7	4.8	6	M12x1	4	48	10	14	17	10	11974	SCN-PK-6	10

1) Packaging unit quantity

Barbed tubing connector RTU-PK

Material:
Brass

Note on materials:
Conforms to RoHS



Dimensions and ordering data											
Barbed connector		Nominal size [mm]	For tubing I.D.		L1	L2	L3	Weight [g]	Part No.	Type	PU ¹⁾
D1	D2		D1	D2							
2.95	2.95	1.5	2	2	14	6	6	1	19541	RTU-PK-2/2-B	10
3.6	2.95	1.5	3	2	17.7	9.7	6	1	19542	RTU-PK-3/2	10
3.6	3.6	2.5	3	3	19	8.5	8.5	1	4805	RTU-PK-3/3	10
3.6	4.8	2.5	3	4	20	8.5	10.5	2	4499	RTU-PK-3/4	10
4.8	4.8	3.4	4	4	23	10.5	10.5	2	4806	RTU-PK-4/4	10
4.8	7	3.4	4	6	25.5	10.5	13	2	7604	RTU-PK-4/6	10
7	7	5.3	6	6	28	13	13	3	7605	RTU-PK-6/6	10

1) Packaging unit quantity

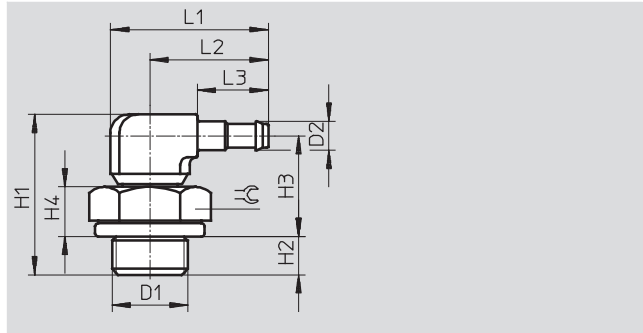
Barbed fittings N/CN

Technical data



Barbed L-fitting LCN-...-PK
360° rotatable

Material:
M3 thread: High-alloy stainless steel,
die-cast zinc
M5 thread: Steel, die-cast zinc
G thread: Aluminium, die-cast zinc



Dimensions and ordering data															
Connection	Nominal size	Barbed connector	For tubing I.D.	H1	H2	H3	H4	L1	L2	L3	∓	Weight	Part No.	Type	PU ¹⁾
D1	[mm]	D2										[g]			
M thread															
M3	1.3	2.95	2	14	2.8	9.2	3.0	12.2	9.6	6	4.5	2	30491	LCN-M3-PK-2-B	10
	2.0	3.6	3	15.2	2.8	9.8	3.0	15.9	13.3	9.7	4.5	2	30982	LCN-M3-PK-3	10
M5	1.3	2.95	2	16	3.8	10.2	4.0	12.2	9.6	6	7	4	19523	LCN-M5-PK-2	10
	2.0	3.6	3	20.1	3.8	13.7	4.0	18.7	14.7	9.7	7	5	12257	LCN-M5-PK-3	10
	2.9	4.8	4	21.4	3.8	13.9	4.0	20.7	16.7	11.7	7	6	12258	LCN-M5-PK-4	10
G thread															
G ¹ / ₈	2.0	3.6	3	21.2	4.9	13.7	5.6	24	17.5	9.7	13	9	11955	LCN- ¹ / ₈ -PK-3	10
	2.9	4.8	4	22.55	4.9	14.15	5.6	26	19.5	11.7	13	10	11956	LCN- ¹ / ₈ -PK-4	10
	4.9	7	6	24.45	4.9	15.15	5.6	28.5	22	14.2	13	11	11957	LCN- ¹ / ₈ -PK-6	10
G ¹ / ₄	2.9	4.8	4	25.05	5.8	15.75	7.2	26	19.5	11.7	17	13	12958	LCN- ¹ / ₄ -PK-4	10
	4.9	7	6	26.95	5.8	16.75	7.2	28.5	22	14.2	17	15	12959	LCN- ¹ / ₄ -PK-6	10
G ³ / ₈	4.9	7	6	27.95	6.8	16.75	7.2	28.5	22	14.2	19	20	12960	LCN- ³ / ₈ -PK-6	10

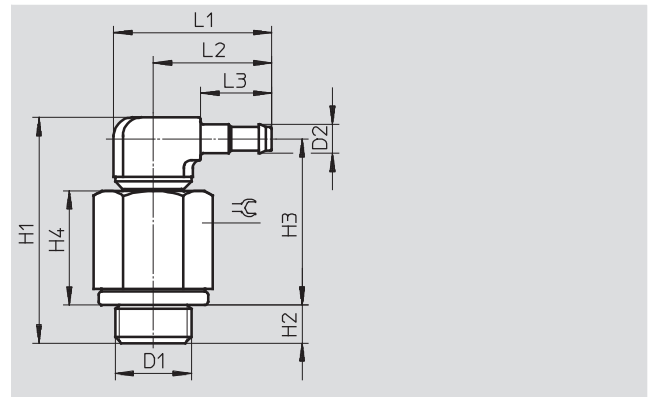
1) Packaging unit quantity

Barbed fittings N/CN

Technical data

Barbed L-fitting LCNH-...-PK
360° rotatable

Material:
M thread: Steel, die-cast zinc
G thread: Aluminium, die-cast zinc

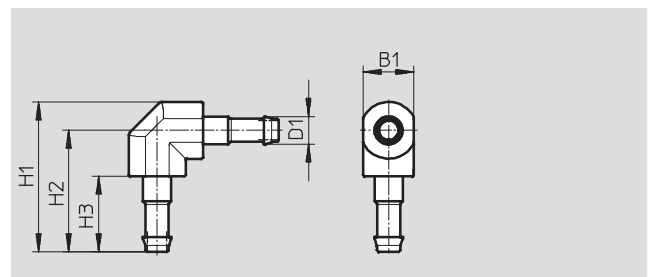


Dimensions and ordering data																
Connection	Nominal size	Barbed connector	For tubing I.D.	H1	H2	H3	H4	L1	L2	L3	⌀C	Weight	Part No.	Type	PU ¹⁾	
D1	[mm]	D2										[g]				
M thread																
M5	1.3	2.95	2	26.9	3.8	21.1	14.9	12.2	9.6	6	7	8	35982	LCNH-M5-PK-2	10	
	2.0	3.6	3	28.7	3.8	22.3	12.6	18.7	14.7	9.7	7	9	35983	LCNH-M5-PK-3	10	
	2.9	4.8	4	30.2	3.8	22.9	12.6	20.7	16.7	11.7	7	10	35984	LCNH-M5-PK-4	10	
G thread																
G ¹ / ₈	2.0	3.6	3	31.8	4.9	24.3	16.2	24.0	17.5	9.7	13	13	35985	LCNH- ¹ / ₈ -PK-3	10	
	2.9	4.8	4	33.15	4.9	24.75	16.2	26	19.5	11.7	13	14	35986	LCNH- ¹ / ₈ -PK-4	10	
	4.9	7	6	35.05	4.9	25.75	16.2	28.5	22	14.2	13	16	35987	LCNH- ¹ / ₈ -PK-6	10	
G ¹ / ₄	2.9	4.8	4	35.65	5.8	26.35	17.8	26	19.5	11.7	17	21	35988	LCNH- ¹ / ₄ -PK-4	10	
	4.9	7	6	37.55	5.8	27.35	17.8	28.5	22	14.2	17	22	35989	LCNH- ¹ / ₄ -PK-6	10	
G ³ / ₈	4.9	7	6	38.55	6.8	27.35	17.8	28.5	22	14.2	19	29	35990	LCNH- ³ / ₈ -PK-6	10	

1) Packaging unit quantity

Barbed L-connector L-PK

Material:
Brass, polyacetate



Dimensions and ordering data										
Barbed connector	Nominal size	For tubing I.D.	B1	H1	H2	H3	Weight	Part No.	Type	PU ¹⁾
D1	[mm]						[g]			
2.95	1.5	2	4	12.2	10.2	6	1	19539	L-PK-2	10
3.6	2.5	3	6.5	19.25	15.6	9.7	1	7473	L-PK-3	10
4.8	3.4	4	7.8	23.1	18.7	11.7	2	9584	L-PK-4	10
7	5.3	6	10.4	31.5	26.3	14	7	150012	L-PK-6	10

1) Packaging unit quantity

Barbed fittings N/CN

Technical data



Barbed T-fitting TCN-...-PK

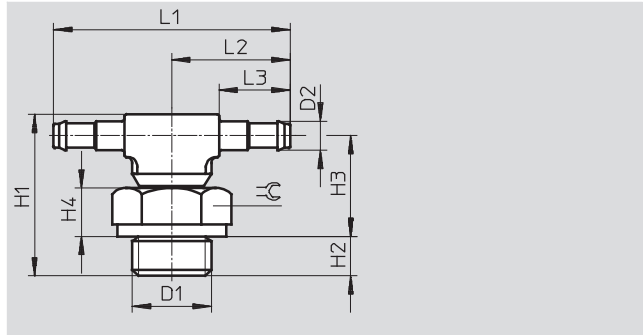
360° rotatable

Material:

M3 thread: High-alloy stainless steel,
die-cast zinc

M5 thread: Steel, die-cast zinc

G thread: Aluminium, die-cast zinc



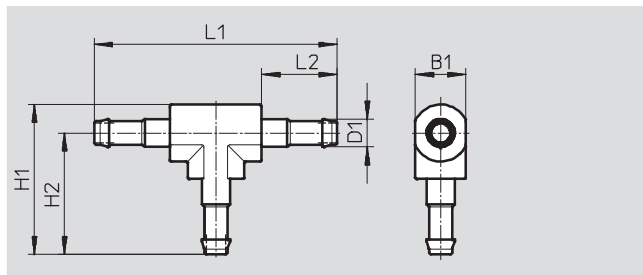
Dimensions and ordering data														
Connection	Nominal size	Barbed connector	For tubing I.D.	H1	H2	H3	H4	L1	L2	L3	±C	Part No.	Type	PU ¹⁾
D1	[mm]	D2												
M thread														
M3	1.3	2.95	2	14	2.8	9.2	3.0	19.2	9.6	6	4.5	30492	TCN-M3-PK-2	10
	2.0	3.6	3	15.2	2.8	9.8	3.0	26.6	13.3	9.7	4.5	30983	TCN-M3-PK-3	10
M5	1.3	2.95	2	16	3.8	10.2	4.0	19.2	9.6	6	7	19525	TCN-M5-PK-2	10
	2.0	3.6	3	20.1	3.8	13.7	4.0	29.4	14.7	9.7	7	12259	TCN-M5-PK-3	10
	2.9	4.8	4	18.1	3.8	14.3	4.0	33.4	16.7	11.7	7	12432	TCN-M5-PK-4	10
G thread														
G ¹ / ₈	2.0	3.6	3	21.2	4.9	13.7	5.6	35	17.5	9.7	13	11961	TCN- ¹ / ₈ -PK-3	10
	2.9	4.8	4	22.55	4.9	14.15	5.6	39	19.5	11.7	13	11962	TCN- ¹ / ₈ -PK-4	10
	4.9	7	6	24.45	4.9	15.15	5.6	44	22	14.2	13	11963	TCN- ¹ / ₈ -PK-6	10
G ¹ / ₄	2.9	4.8	4	25.05	5.8	15.75	7.2	39	19.5	11.7	17	11964	TCN- ¹ / ₄ -PK-4	10
	4.9	7	6	26.95	5.8	16.75	7.2	44	22	14.2	17	11965	TCN- ¹ / ₄ -PK-6	10
G ³ / ₈	4.9	7	6	27.95	6.8	16.75	7.2	44	22	14.2	19	11966	TCN- ³ / ₈ -PK-6	10

1) Packaging unit quantity

Barbed T-connector T-PK

Material:

Brass, polyacetate



Dimensions and ordering data											
Barbed connector	Nominal size	For tubing I.D.	B1	H1	H2	L1	L2	Weight	Part No.	Type	PU ¹⁾
D1	[mm]							[g]			
2.95	1.5	2	4	12.2	10.2	20.4	6	1	30919	T-PK-2	10
3.6	2.5	3	6.5	19.25	15.6	31.2	9.7	2	7267	T-PK-3	10
4.8	3.4	4	7.8	23	18.7	37.4	11.7	3	9585	T-PK-4	10
7	5.3	6	10.4	31.5	26.3	52.6	14	11	150015	T-PK-6	10

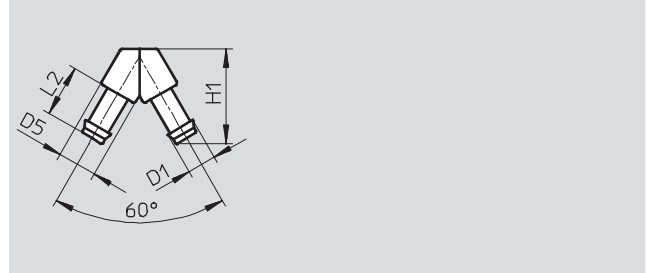
1) Packaging unit quantity

Barbed fittings N/CN

Technical data

Barbed V-connector V-PK

Material:
Brass, polyacetate

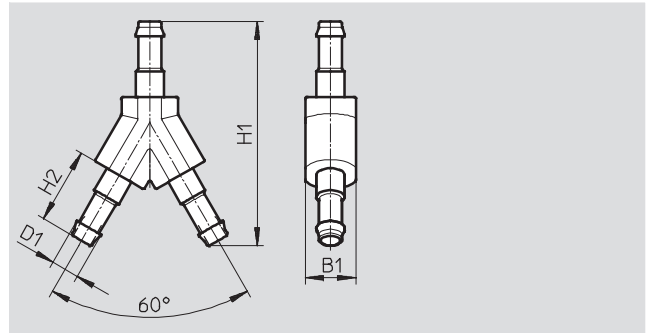


Dimensions and ordering data									
Barbed connector D1	Nominal size [mm]	For tubing I.D.	D5	H1	L2	Weight [g]	Part No.	Type	PU ²⁾
2.95	1.5	2	4	11.3	6	1	30918	V-PK-2 ¹⁾	10
3.6	2.5	3	6.5	17.6	9.7	1	7268	V-PK-3	10
4.8	3.4	4	7.8	21	11.7	2	30920	V-PK-4	10
7	5.3	6	10.4	29.8	14	8	150014	V-PK-6	10

- 1) Conforms to RoHS
- 2) Packaging unit quantity

Barbed Y-connector Y-PK

Material:
Brass, polyacetate



Dimensions and ordering data									
Barbed connector D1	Nominal size [mm]	For tubing I.D.	B1	H1	H2	Weight [g]	Part No.	Type	PU ²⁾
2.95	1.5	2	4	18	6	1	19540	Y-PK-2 ¹⁾	10
3.6	2.5	3	6.5	28.8	9.7	2	7269	Y-PK-3	10
4.8	3.4	4	7.8	34.5	11.7	3	9586	Y-PK-4	10
7	5.3	6	10.4	49.2	14	12	150013	Y-PK-6	10

- 1) Conforms to RoHS
- 2) Packaging unit quantity

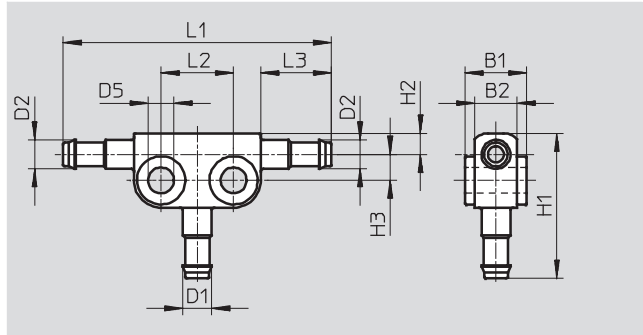
Barbed fittings N/CN

Technical data



Barbed T-connector FCN

Material:
Die-cast zinc



Dimensions and ordering data																		
Connection		Nominal size [mm]	For tubing I.D.		B1	B2	D5	H1	H2	H3	L1	L2	L3	Weight [g]	Part No.	Type	PU ¹⁾	
D1	D2		D1	D2														
2.95	2.95	1.3	2	2	6	4	3.2	15.7	3.1	2.6	28	8	6	5	19527	FCN-3-PK-2-B	10	
3.6	3.6	2	3	3	8.4	5.2	4.3	21.6	3.5	3.9	38.4	10	9.7	8	14768	FCN-3-PK-3	10	
2.95	3.6	2/1.3	2	3	8.4	5.2	4.3	17.9	3.5	3.9	38.4	10	9.7	8	31314	FCN-3-PK-3/2	10	
4.8	4.8	2.9	4	4	10.2	7	4.3	24	3.5	4.3	44.4	12	11.7	12	14769	FCN-3-PK-4	10	
3.6	4.8	2.9/2	3	4	10.2	7	4.3	22	3.5	4.3	44.4	12	11.7	12	31315	FCN-3-PK-4/3	10	
7	7	4.9	6	6	12	8.8	4.3	28.4	4.4	5.3	49.4	12	14.2	16	14770	FCN-3-PK-6	10	
4.8	7	4.9/2.9	4	6	12	8.8	4.3	25.9	4.4	5.3	49.4	12	14.2	16	31316	FCN-3-PK-6/4	10	

1) Packaging unit quantity

Barbed fittings CRCN, stainless steel

Technical data

Barbed fitting CRCN
with sealing ring OK

-Q- Ambient temperature
0 ... +60 °C
Pressure
-0.95 ... +10 bar



Tube assembly/disassembly

Assembly:

1. Grip the tube as close to the end as possible.
2. Turn the tube (approx. 90°) around the nipple axis when pushing it on.

Disassembly:

1. Insert a blade behind the sealing and retaining edge to disconnect the tube.
Make sure that the barbed fitting is not damaged at the sealing and retaining edge.
2. Pull off the tube.

Possible accessories

Connecting pliers ZMS-PK-3/4
→ Internet: zms
Disconnecting pliers ZDS-PK-3, ZDS-PK-4
→ Internet: zds

General technical data

Pneumatic connection 1	Male thread								
	M5			G1/8			G1/4		G3/8
Pneumatic connection 2 for tubing O.D. [mm]	3	4	6	4	6	8	6	8	8
Nominal size [mm]	1.5	2.5	2.5	2.5	3.2	5.3	3.2	5.3	5.3
Type of seal on threaded plug	Sealing ring								
Usable tubing	PUN, PEN, PAN, PFAN								

Operating and environmental conditions

Operating pressure [bar]	-0.95 ... +10
Operating medium	Compressed air to ISO 8573-1:2010 [7:-:-]
Note on operating/pilot medium	Lubricated operation possible (required during subsequent operation)
Ambient temperature [°C]	0 ... +60
Corrosion resistance class CRC ¹⁾	2
Suitable for use in the food industry ²⁾	As per manufacturer's declaration

- 1) Corrosion resistance class 2 according to Festo standard 940 070
Components subject to moderate corrosion stress. Externally visible parts with primarily decorative surface requirements which are in direct contact with a normal industrial environment or media such as coolants or lubricating agents.
- 2) The sealing ring CRO must be used when using the barbed fitting in the food industry.

Materials

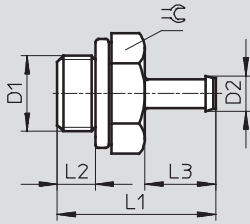
Housing	High-alloy stainless steel
Threaded seal	Stainless steel, fluoro elastomer
Note on materials	RoHS-compliant

Barbed fittings CRCN, stainless steel

Technical data

Dimensions

Download CAD Data → www.festo.com/us/cad



Ordering data

Connection	Nominal size [mm]	For tubing O.D.	D2	L1	L2	L3	±C	Weight/piece [g]	Part No.	Type	PU ¹⁾	
M thread												
D1	M5	1.5	3	2.95	13.8	3.8	6	7	1.8	30985	CRCN-M5-PK-2	10
		2.5	4	3.6	17.5	3.8	9.7	7	1.74	13967	CRCN-M5-PK-3	10
		2.5	6	4.8	19.5	3.8	11.7	7	2.58	13968	CRCN-M5-PK-4	10
G thread												
D1	G ¹ / ₈	2.5	4	3.6	20.2	4.9	9.7	13	7.52	13969	CRCN- ¹ / ₈ -PK-3	10
		3.2	6	4.8	22.2	4.9	11.7	13	7.86	13970	CRCN- ¹ / ₈ -PK-4	10
		5.3	8	7	24.5	4.9	14	13	7.5	13971	CRCN- ¹ / ₈ -PK-6	10
D1	G ¹ / ₄	3.2	6	4.8	24.7	5.8	11.7	17	17.73	13972	CRCN- ¹ / ₄ -PK-4	1
		5.3	8	7	27	5.8	14	17	16.5	13973	CRCN- ¹ / ₄ -PK-6	1
D1	G ³ / ₈	5.3	8	7	28	6.8	14	19	23.7	13974	CRCN- ³ / ₈ -PK-6	1

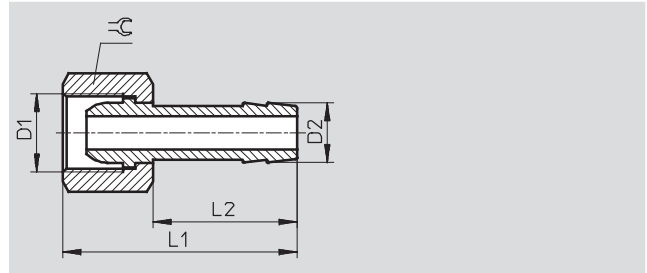
1) Packaging unit

Barbed hose fittings C-P/N-P, for hose clip

Technical data

Barbed hose fitting C-...-P

Material:
Brass



Dimensions and ordering data										
Connection	Nominal size	Connection	For tubing I.D.	L1	L2	⌀G	Weight	Part No.	Type	PU ¹⁾
D1	[mm]	D2					[g]			
G thread										
G ¹ / ₈	4	7	6	36	24	13	18	2021	C- ¹ / ₈ -P-6	10
G ¹ / ₄	4.5	7	6	39	24	17	28	2022	C- ¹ / ₄ -P-6	10
	5.5	10	9	39	24	17	34	2023	C- ¹ / ₄ -P-9	10
G ³ / ₈	4.5	7	6	39	24	19	31	2024	C- ³ / ₈ -P-6	1
	6.5	10	9	39	24	19	34	2025	C- ³ / ₈ -P-9	1
G ¹ / ₂	11	14.8	13	50	30	24	64	2026	C- ¹ / ₂ -P-13	1

1) Packaging unit quantity

Barbed hose fittings C-P/N-P, for hose clip

Technical data

Barbed hose fitting N-...-P

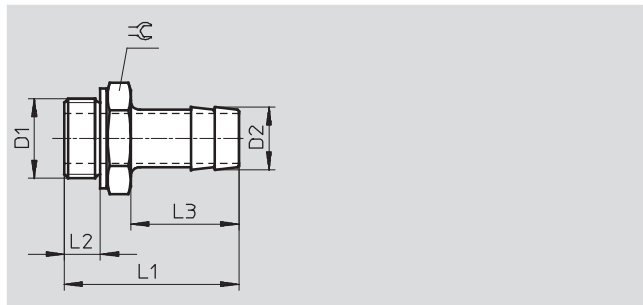
Material:

N...-P: Blue anodised aluminium

N...-P...MS: Brass

Note on materials:

RoHS-compliant



General technical data	
Type of seal on threaded plug	Sealing ring OK (only G thread)

Operating and environmental conditions	
Operating medium	Compressed air in accordance with ISO 8573-1:2010 [7:-:-]
Note on operating/pilot medium	Operation with lubricated medium possible (in which case lubricated operation will always be required)

Dimensions and ordering data											
Pneumatic connection		Nominal size [mm]	Barbed connector D2	L1	L2	L3	≈	CRC ¹⁾	Part No.	Type	PU ²⁾
G thread											
D1											
G ¹ / ₈	PK-6	4.5	7	34.7	4.9	24.2	13	2	3605	N- ¹ / ₈ -P-6	10
G ¹ / ₄	PK-6	4.5	7	37.1	5.8	24.1	17	2	3606	N- ¹ / ₄ -P-6	10
	PK-9	6.5	10	37.1	5.8	24.1	17		3607	N- ¹ / ₄ -P-9	10
G ³ / ₈	PK-6	4.5	7	38.1	6.8	24.1	19	2	3608	N- ³ / ₈ -P-6	10
	PK-9	7.6	10	38.1	6.8	24.1	19		3609	N- ³ / ₈ -P-9	10
	PK-13	11	14.8	45.4	6.8	30	19		36160	N- ³ / ₈ -P-13	1
G ¹ / ₂	PK-9	8	10.3	39.5	8.15	24	24	2	3610	N- ¹ / ₂ -P-9	1
	PK-13	11	14.8	45.5	8.15	30	24		3611	N- ¹ / ₂ -P-13	1
G ³ / ₄	PK-13	11	14.8	50	9.05	30	32	2	3612	N- ³ / ₄ -P-13	1
	PK-19	16.5	20.8	56	9.05	36	32		3613	N- ³ / ₄ -P-19	1
R thread											
R1	PK-19	16.5	20.8	68.6	-	36	34	2	572260	N-1-P-19	1
NPT thread											
NPT ³ / ₄ -14	PK-19	16.5	20.8	66.68	-	36	30.17	2	564848	N- ³ / ₄ -P-19-NPT	1
NPT1-11 ¹ / ₂	PK-19	16.5	20.8	74	-	36	34	2	572243	N-1-P-19-NPT	1

1) Corrosion resistance class 1 according to Festo standard 940 070
 Components requiring low corrosion resistance. Transport and storage protection. Parts that do not have primarily decorative surface requirements, e.g. in internal areas that are not visible or behind covers.
 Corrosion resistance class 2 according to Festo standard 940 070
 Components requiring moderate corrosion resistance. Externally visible parts with primarily decorative surface requirements which are in direct contact with a normal industrial environment or media such as coolants or lubricating agents.

2) Packaging unit quantity

Hose clips SK

Technical data

Hose clip SK
to DIN 3017

The hose clips are equipped with
a worm thread. Band width 9 mm.

Material:
Steel



Dimensions and ordering data				
Clamping range Ø [mm]	Weight [g]	Part No.	Type	PU ¹⁾
10 ... 16	7	9274	SK-10-16	10
16 ... 27	12	9275	SK-16-27	10
20 ... 32	13	9276	SK-20-32	10

1) Packaging unit quantity

Product Range and Company Overview

A Complete Suite of Automation Services

Our experienced engineers provide complete support at every stage of your development process, including: conceptualization, analysis, engineering, design, assembly, documentation, validation, and production.



Custom Automation Components
Complete custom engineered solutions



Custom Control Cabinets
Comprehensive engineering support and on-site services



Complete Systems
Shipment, stocking and storage services

The Broadest Range of Automation Components

With a comprehensive line of more than 30,000 automation components, Festo is capable of solving the most complex automation requirements.



Electromechanical
Electromechanical actuators, motors, controllers & drives



Pneumatics
Pneumatic linear and rotary actuators, valves, and air supply



PLCs and I/O Devices
PLC's, operator interfaces, sensors and I/O devices

Supporting Advanced Automation... As No One Else Can!

Festo is a leading global manufacturer of pneumatic and electromechanical systems, components and controls for industrial automation, with more than 12,000 employees in 56 national headquarters serving more than 180 countries. For more than 80 years, Festo has continuously elevated the state of manufacturing with innovations and optimized motion control solutions that deliver higher performing, more profitable automated manufacturing and processing equipment. Our dedication to the advancement of automation extends beyond technology to the education and development of current and future automation and robotics designers with simulation tools, teaching programs, and on-site services.

Quality Assurance, ISO 9001 and ISO 14001 Certifications

Festo Corporation is committed to supply all Festo products and services that will meet or exceed our customers' requirements in product quality, delivery, customer service and satisfaction.

To meet this commitment, we strive to ensure a consistent, integrated, and systematic approach to management that will meet or exceed the requirements of the ISO 9001 standard for Quality Management and the ISO 14001 standard for Environmental Management.



© Copyright 2008, Festo Corporation. While every effort is made to ensure that all dimensions and specifications are correct, Festo cannot guarantee that publications are completely free of any error, in particular typing or printing errors. Accordingly, Festo cannot be held responsible for the same. For Liability and Warranty conditions, refer to our "Terms and Conditions of Sale", available from your local Festo office. All rights reserved. No part of this publication may be reproduced, distributed, or transmitted in any form or by any means, electronic, mechanical, photocopying or otherwise, without the prior written permission of Festo. All technical data subject to change according to technical update.



Printed on recycled paper at New Horizon Graphic, Inc., FSC certified as an environmentally friendly printing plant.

Festo North America

Festo Regional Contact Center

5300 Explorer Drive
Mississauga, Ontario L4W 5G4
Canada

USA Customers:

For ordering assistance,

Call: 1.800.99.FESTO (1.800.993.3786)

Fax: 1.800.96.FESTO (1.800.963.3786)

Email: customer.service@us.festo.com

For technical support,

Call: 1.866.GO.FESTO (1.866.463.3786)

Fax: 1.800.96.FESTO (1.800.963.3786)

Email: product.support@us.festo.com

Canadian Customers:

Call: 1.877.GO.FESTO (1.877.463.3786)

Fax: 1.877.FX.FESTO (1.877.393.3786)

Email: festo.canada@ca.festo.com

USA Headquarters

Festo Corporation
395 Moreland Road
P.O. Box 18023
Hauppauge, NY 11788, USA
www.festo.com/us

USA Sales Offices

Appleton

North 922 Tower View Drive, Suite N
Greenville, WI 54942, USA

Boston

120 Presidential Way, Suite 330
Woburn, MA 01801, USA

Chicago

1441 East Business Center Drive
Mt. Prospect, IL 60056, USA

Dallas

1825 Lakeway Drive, Suite 600
Lewisville, TX 75057, USA

Detroit – Automotive Engineering Center

2601 Cambridge Court, Suite 320
Auburn Hills, MI 48326, USA

New York

395 Moreland Road
Hauppauge, NY 11788, USA

Silicon Valley

4935 Southfront Road, Suite F
Livermore, CA 94550, USA

United States



USA Headquarters, East: Festo Corp., 395 Moreland Road, Hauppauge, NY 11788

Phone: 1.631.435.0800; Fax: 1.631.435.8026;

Email: info@festo-usa.com

www.festo.com/us

Canada



Headquarters: Festo Inc., 5300 Explorer Drive, Mississauga, Ontario L4W 5G4

Phone: 1.905.624.9000; Fax: 1.905.624.9001;

Email: festo.canada@ca.festo.com

www.festo.ca

Mexico



Headquarters: Festo Pneumatic, S.A., Av. Ceylán 3, Col. Tequesquahuac,
54020 Tlalneantla, Edo. de México

Phone: 011 52 [55] 53 21 66 00; Fax: 011 52 [55] 53 21 66 65;

Email: festo.mexico@mx.festo.com

www.festo.com/mx

Central USA

Festo Corporation
1441 East Business
Center Drive
Mt. Prospect, IL 60056, USA
Phone: 1.847.759.2600
Fax: 1.847.768.9480



Western USA

Festo Corporation
4935 Southfront Road,
Suite F
Livermore, CA 94550, USA
Phone: 1.925.371.1099
Fax: 1.925.245.1286



Festo Worldwide

Argentina Australia Austria Belarus Belgium Brazil Bulgaria Canada Chile China Colombia Croatia Czech Republic Denmark
Estonia Finland France Germany Great Britain Greece Hong Kong Hungary India Indonesia Iran Ireland Israel Italy Japan Latvia
Lithuania Malaysia Mexico Netherlands New Zealand Norway Peru Philippines Poland Romania Russia Serbia Singapore
Slovakia Slovenia South Africa South Korea Spain Sweden Switzerland Taiwan Thailand Turkey Ukraine United States Venezuela

www.festo.com