

## Water separators MS-LWS, MS series, NPT

**FESTO**

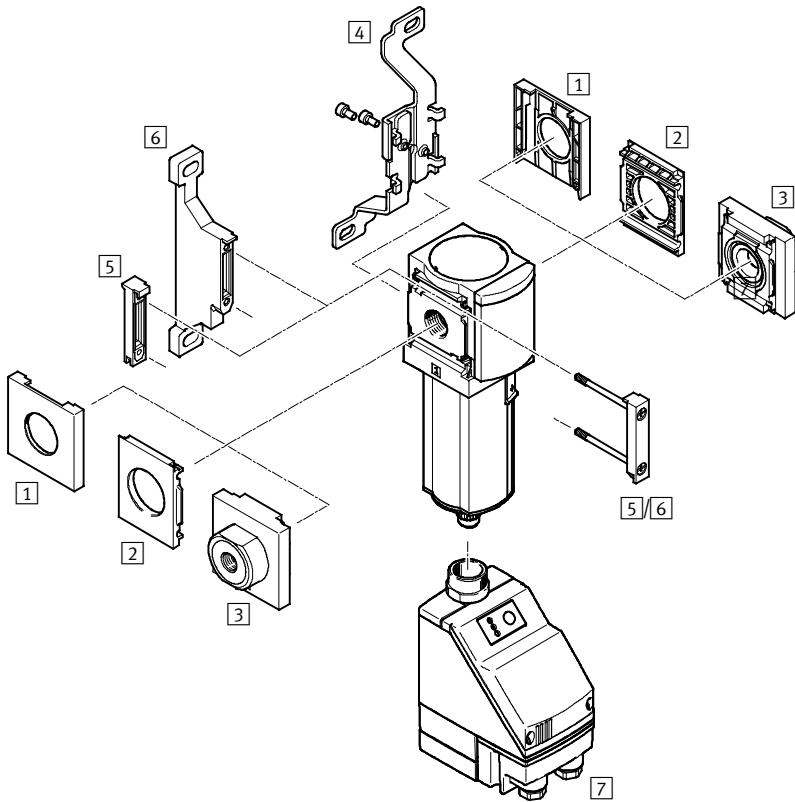


# Water separators MS6N-LWS, MS series, NPT

Peripherals overview

FESTO

## Water separator MS6N-LWS



Note

Additional accessories:

- Module connector for combination with size MS4/MS6 or size MS9 → Internet: amv, rmv, armv
- Adapter for mounting on profiles → Internet: ipm-80, ipm-40-80, ipm-80-80

Mounting attachments and accessories						
		Individual device		Combination		→ Page/Internet
		Without connecting plate	With connecting plate	Without connecting plate	With connecting plate	
1	Cover cap MS6-END	■	–	■	–	ms6-end
2	Mounting plate MS6-AEND	■ <sup>1)</sup>	–	■ <sup>1)</sup>	–	ms6-aend
3	Connecting plate MS6N-AQ...	–	■ <sup>1)</sup>	–	■ <sup>1)</sup>	ms6n-aq
4	Mounting bracket MS6-WB	■	■	–	–	ms6-wb
5	Module connector MS6-MV	–	■	■	■	ms6-mv
6	Mounting bracket MS6-WP	■	■	■	■	ms6-wp
	Mounting bracket (not illustrated) MS6-WPB/WPE/WPM	■	■	■	■	ms6-wp
7	Fully automatic, electrically actuated condensate drain E2/E3/E4	■	■	■	■	7

1) Module connector MS6-MV [5] or mounting bracket MS6-WP/WPB/WPE/WPM [6] is required for mounting.

# Water separators MS6N-LWS, MS series, NPT

Type codes

		MS	6	N	-	LWS	-	1/4	-	U	-	V
<b>Series</b>												
MS	Standard service unit											
<b>Size</b>												
6	Grid dimension 62 mm											
<b>Thread</b>												
N	NPT thread											
<b>Service function</b>												
LWS	Water separator											
<b>Pneumatic connection</b>												
1/4	Thread NPT1/4-18											
3/8	Thread NPT3/8-18											
1/2	Thread NPT1/2-14											
<b>Bowl guard</b>												
U	Integrated as metal bowl											
<b>Condensate drain</b>												
V	Fully automatic											

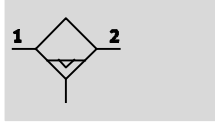
**Further variants can be ordered using the modular system → 7**

- Connecting plates
- Condensate drain
- Type of mounting
- Alternative flow direction

# Water separators MS6N-LWS, MS series, NPT

Technical data

Condensate drain,  
fully automatic



- - Flow rate  
2,400 ... 3,800 l/min
- - Temperature range  
+1 ... +60 °C
- - Supply pressure  
0.8 ... 16 bar



The maintenance-free water separator removes condensate from the compressed air.

- Constantly high condensate separation (99%) up to the maximum flow rate
- Metal bowl
- Available with fully automatic or fully automatic, electrically actuated condensate drain

General technical data				
Size	MS6			
Pneumatic connection 1, 2	NPT <sup>1</sup> / <sub>4</sub> -18	NPT <sup>3</sup> / <sub>8</sub> -18	NPT <sup>1</sup> / <sub>2</sub> -14	NPT <sup>1</sup> / <sub>4</sub> -18 ... NPT <sup>3</sup> / <sub>4</sub> -14 (with connecting plate AQ...)
Constructional design	Centrifugal separator			
Type of mounting	Via accessories			
	In-line installation			
Mounting position	Vertical ±5°			
Air purity class at the output	Compressed air in accordance with ISO 8573-1:2010 [7:7:4] (with variant E2, E3 or E4: [-:7:4])			
Bowl guard	Integrated as metal bowl			
Condensate drain	Fully automatic			
	Fully automatic, electrically actuated			
Degree of condensate separation [%]	99			
Max. condensate volume [ml]	38			

Standard nominal flow rate q <sub>nN</sub> <sup>1)</sup>			
Size	MS6		
Pneumatic connection	NPT <sup>1</sup> / <sub>4</sub> -18	NPT <sup>3</sup> / <sub>8</sub> -18	NPT <sup>1</sup> / <sub>2</sub> -14
q <sub>nN</sub> [l/min]	2,400	3,500	3,800

1) Measured at p<sub>1</sub> = 6 bar and Δp = 1 bar

Operating and environmental conditions		
Condensate drain	Fully automatic V	Fully automatic, electrically actuated E2/E3/E4
Size	MS6	
Supply pressure [bar]	2 ... 12	0.8 ... 16
Operating medium	Compressed air in accordance with ISO 8573-1:2010 [7:-:-]	
	Inert gases	
Ambient temperature [°C]	+5 ... +60	+1 ... +60
Temperature of medium [°C]	+5 ... +60	+1 ... +60
Storage temperature [°C]	-10 ... +60	+1 ... +60
Corrosion resistance class CRC <sup>1)</sup>	2	

1) Corrosion resistance class 2 to Festo standard 940 070  
Components subject to moderate corrosion stress. Externally visible parts with primarily decorative surface requirements which are in direct contact with a normal industrial environment or media such as coolants or lubricants.

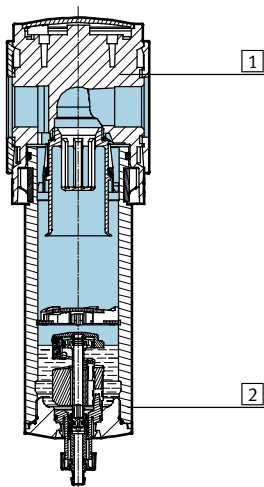
# Water separators MS6N-LWS, MS series, NPT

Technical data

Weight [g]	
Size	MS6
Water separator	820
Water separator with fully automatic, electrically actuated condensate drain E2/E3/E4	1,800

## Materials

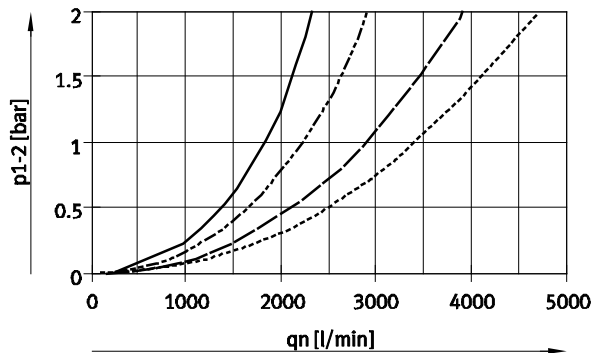
Sectional view



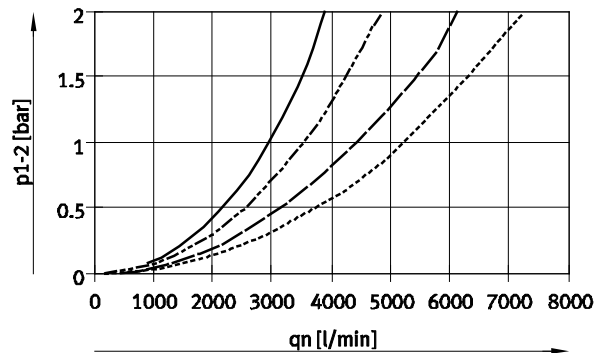
Water separator		
1	Housing	Die-cast aluminium
2	Bowl	Wrought aluminium alloy
	Inspection window	PA
-	Seals	NBR
Note on materials		RoHS-compliant (not with variant E2, E3 or E4)
		Free of copper and PTFE

## Standard flow rate $q_n$ as a function of differential pressure $p_{1-2}$

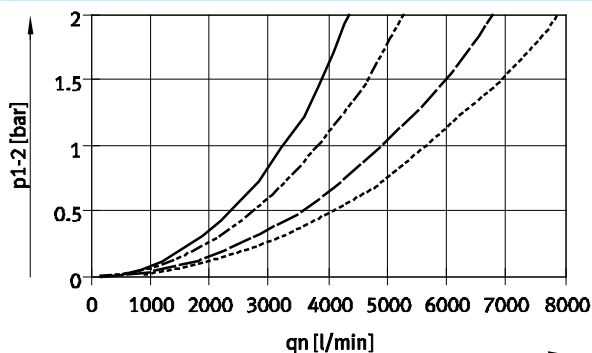
MS6N-LWS-1/4



MS6N-LWS-3/8



MS6N-LWS-1/2



- 4 bar
- - - 6 bar
- 10 bar
- - - 14 bar

# Water separators MS6N-LWS, MS series, NPT

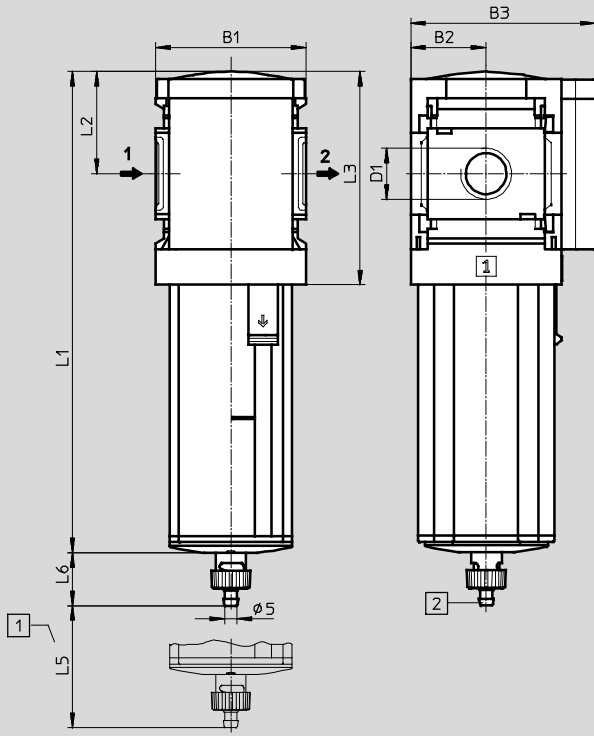
Technical data

**FESTO**

## Dimensions – Standard

Download CAD data → [www.festo.com](http://www.festo.com)

Fully automatic condensate drain V



- 1 Installation dimensions
- 2 Barbed connector for plastic tubing PCN-4

→ Flow direction

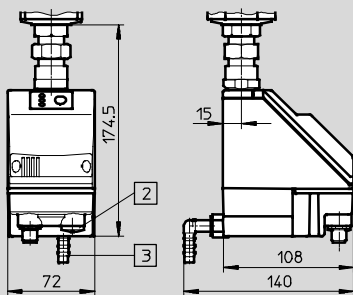
Type	B1	B2	B3	D1	L1	L2	L3	L5	L6
MS6N-LWS-1/4-...-V	62	31	76	NPT1/4-18	198	42	87	68	22
MS6N-LWS-3/8-...-V				NPT3/8-18					
MS6N-LWS-1/2-...-V				NPT1/2-14					

## Dimensions – Condensate drain

Download CAD data → [www.festo.com](http://www.festo.com)

Fully automatic, electrically actuated E2/E3/E4

Technical data → Internet: [pwea](http://pwea)



Condensate drain PWEA:

- 2 Electrical connection: Screw terminal PG9
- 3 Connection 360° rotatable for plastic tubing PUN-H-12x2

## Ordering data

Size	Condensate drain	Connection	Part No.	Type
Integrated as metal bowl				
MS6	Fully automatic	NPT1/4-18	564871	MS6N-LWS-1/4-U-V
		NPT3/8-18	564872	MS6N-LWS-3/8-U-V
		NPT1/2-14	564873	MS6N-LWS-1/2-U-V

# Water separators MS6N-LWS, MS series, NPT

Ordering data – Modular products

M Mandatory data								O Options	
Module No.	Series	Size	Thread	Function	Connection size	Bowl guard	Condensate drain	Type of mounting	Alternative flow direction
564898	MS	6	N	LWS	1/4, 3/8, 1/2, AQN, AQP, AQR, AQS	U	V, E2, E3, E4	WP, WPM, WB	Z
<b>Ordering example</b>									
<b>564898</b>	<b>MS</b>	<b>6</b>	<b>N</b>	<b>- LWS</b>	<b>- AQN</b>	<b>- U</b>	<b>- V</b>	<b>- WP</b>	<b>- Z</b>

Ordering table					
Grid dimension	[mm]		Condi-tions	Code	Enter code
		62			
<b>M</b> Module No.	<b>564898</b>				
Series	Standard			<b>MS</b>	MS
Size	6			<b>6</b>	6
Thread	NPT thread			<b>N</b>	N
Function	Water separator			<b>-LWS</b>	-LWS
Connection size	Thread NPT1/4			<b>-1/4</b>	
	Thread NPT3/8			<b>-3/8</b>	
	Thread NPT1/2			<b>-1/2</b>	
	Connecting plate NPT1/4			<b>-AQN</b>	
	Connecting plate NPT3/8			<b>-AQP</b>	
	Connecting plate NPT1/2			<b>-AQR</b>	
	Connecting plate NPT3/4			<b>-AQS</b>	
Bowl guard	Metal bowl			<b>-U</b>	-U
Condensate drain	Fully automatic (P1 max. 12 bar)			<b>-V</b>	
	External fully automatic condensate drain, electrical, 110 V AC, terminals (P1 max. 16 bar)			<b>-E2</b>	
	External fully automatic condensate drain, electrical, 230 V AC, terminals (P1 max. 16 bar)			<b>-E3</b>	
	External fully automatic condensate drain, electrical, 24 V DC, terminals (P1 max. 16 bar)			<b>-E4</b>	
<b>O</b> Type of mounting	Mounting bracket		<b>1</b>	<b>-WP</b>	
	Mounting bracket		<b>1</b>	<b>-WPM</b>	
	Mounting bracket			<b>-WB</b>	
Alternative flow direction	Flow direction from right to left			<b>-Z</b>	

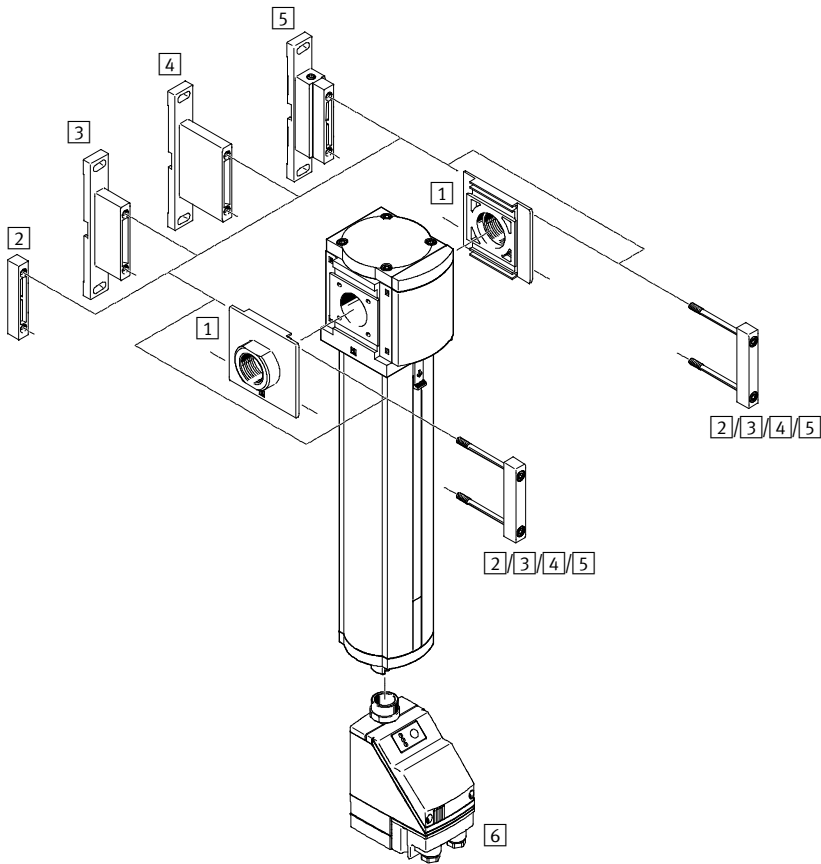
**1 WP, WPM** Only with connecting plate AQN, AQP, AQR or AQS

**Transfer order code**

<b>564898</b>	<b>MS</b>	<b>6</b>	<b>N</b>	<b>- LWS</b>	<b>-</b>	<b>-U</b>	<b>-</b>	<b>-</b>	<b>-</b>
---------------	-----------	----------	----------	--------------	----------	-----------	----------	----------	----------

## Water separators MS9-LWS, MS series, NPT

Peripherals overview



Note

Additional accessories:

- Module connector for combinations with size MS6, MS9 or MS12

→ Internet: rmv, armv

Mounting attachments and accessories					
	Individual device	Combination		→ Page/ Internet	
		With female thread N $\frac{3}{4}$ or N1	With connecting plate AQ...		Module without connecting thread, without connecting plate G
1	Connecting plate MS9-AQ...	-	■	■	ms9-aq
2	Module connector MS9-MV	-	-	■	ms9-mv
3	Mounting bracket MS9-WP	■	■	■	ms9-wp
4	Mounting bracket MS9-WPB	■	■	■	ms9-wp
5	Mounting bracket MS9-WPM	■	■	■	ms9-wp
6	Condensate drain, fully automatic, electrically actuated E2/E3/E4	■	■	■	14



## Water separators MS9-LWS, MS series, NPT

Type codes

		MS	9	-	LWS	-	G	-	U	-	V	
<b>Series</b>												
MS	Standard service unit											
<b>Size</b>												
9	Grid dimension 90 mm											
<b>Service function</b>												
LWS	Water separator											
<b>Connection size</b>												
G	Module without connecting thread, without connecting plate											
<b>Bowl guard</b>												
U	Integrated as metal bowl											
<b>Condensate drain</b>												
V	Fully automatic											

Additional variants can be ordered using the modular product system → 14

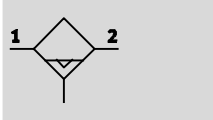
- Connecting plates
- Condensate drain
- Type of mounting
- UL certification
- Alternative flow direction




## Water separators MS9-LWS, MS series, NPT

Technical data

**FESTO**

Condensate drain,  
fully automatic



-  - Flow rate  
12,000 ... 15,000 l/min
-  - Temperature range  
+1 ... +60 °C
-  - Operating pressure  
0.8 ... 16 bar



The water separator removes condensate from the compressed air.

- Constantly high condensate separation (99%) up to the maximum flow rate
- Metal bowl
- Available with fully automatic or fully automatic, electrically actuated condensate drain

General technical data				
Size	MS9			
Pneumatic connection 1, 2	NPT $\frac{3}{4}$ -14	NPT1-11 $\frac{1}{2}$	NPT $\frac{1}{2}$ -14 ... NPT1 $\frac{1}{2}$ -11 $\frac{1}{2}$ (with connecting plate AQ...)	- (without connecting thread G)
Design	Centrifugal separator			
Type of mounting	Via accessories In-line installation			
Mounting position	Vertical $\pm 5^\circ$			
Air purity class at the output	Compressed air to ISO 8573-1:2010 [-:7:4]			
Bowl guard	Integrated as metal bowl			
Condensate drain	Fully automatic Fully automatic, electrically actuated			
Degree of condensate separation [%]	99			
Max. condensate volume [ml]	220			

Standard nominal flow rate $q_{nN}^{1)}$ [l/min]			
Pneumatic connection	Thread NPT $\frac{3}{4}$ -14 or connecting plate AQS	Thread NPT1-11 $\frac{1}{2}$ or connecting plate AQT	Without connecting thread G
$q_{nN}$ [l/min]	12,000 $\pm 15\%$	15,000 $\pm 15\%$	15,000 $\pm 15\%$

1) Measured at  $p_1 = 6$  bar and  $\Delta p = 1$  bar

## Water separators MS9-LWS, MS series, NPT

Technical data

**FESTO**

Operating and environmental conditions		
Condensate drain	Fully automatic V	Fully automatic, electrically actuated E2/E3/E4
Operating pressure [bar]	2 ... 12	0.8 ... 16
Operating medium	Compressed air to ISO 8573-1:2010 [:-:-:-]	
Ambient temperature [°C]	+5 ... +60	+1 ... +60
Temperature of medium [°C]	+5 ... +60	+1 ... +60
Storage temperature [°C]	+5 ... +60	+1 ... +60
Corrosion resistance class CRC <sup>1)</sup>	2	
Certification	cULus recognized (OL)	

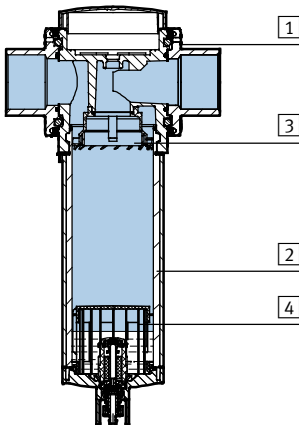
1) Corrosion resistance class 2 according to Festo standard 940 070

Components subject to moderate corrosion stress. Externally visible parts with primarily decorative surface requirements which are in direct contact with a normal industrial environment or media such as coolants or lubricating agents.

Weight [g]	
Water separator	2,000
Water separator with condensate drain, fully automatic, electrically actuated E2/E3/E4	2,400

### Materials

Sectional view

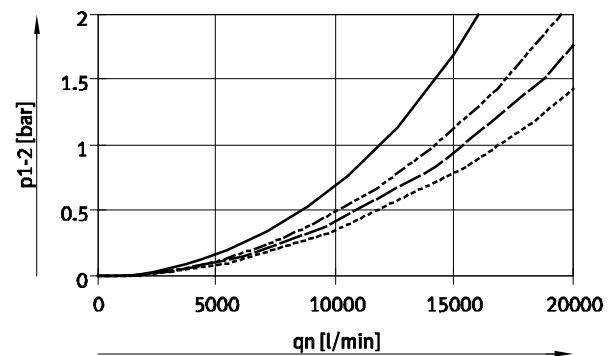
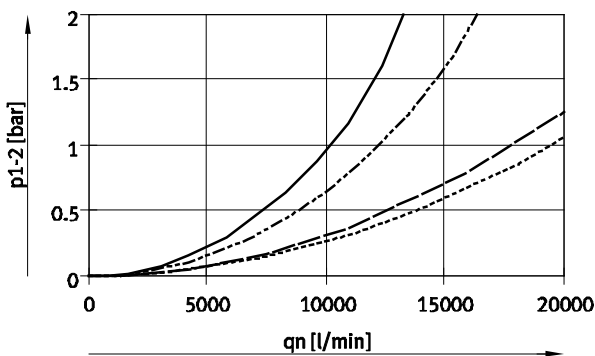


Water separator		
1	Housing	Die-cast aluminium
2	Bowl	Wrought aluminium alloy
	Inspection window	PA
3	Spin disc	POM
4	Isolating disc	POM
-	Cover	PA, reinforced
-	Connecting plate, module connector, mounting bracket	Die-cast aluminium
-	Seals	NBR
Note on materials		RoHS-compliant (not with variant E2, E3 or E4)

### Standard flow rate $q_n$ as a function of differential pressure $\Delta p_{1-2}$

MS9-LWS-N $\frac{3}{4}$ /AQS, pneumatic connection NPT $\frac{3}{4}$ -14

MS9-LWS-N1/AQT, pneumatic connection NPT1-11 $\frac{1}{2}$



— 4 bar                      - · - · 10 bar  
- - - 6 bar                    · · · · · 12 bar

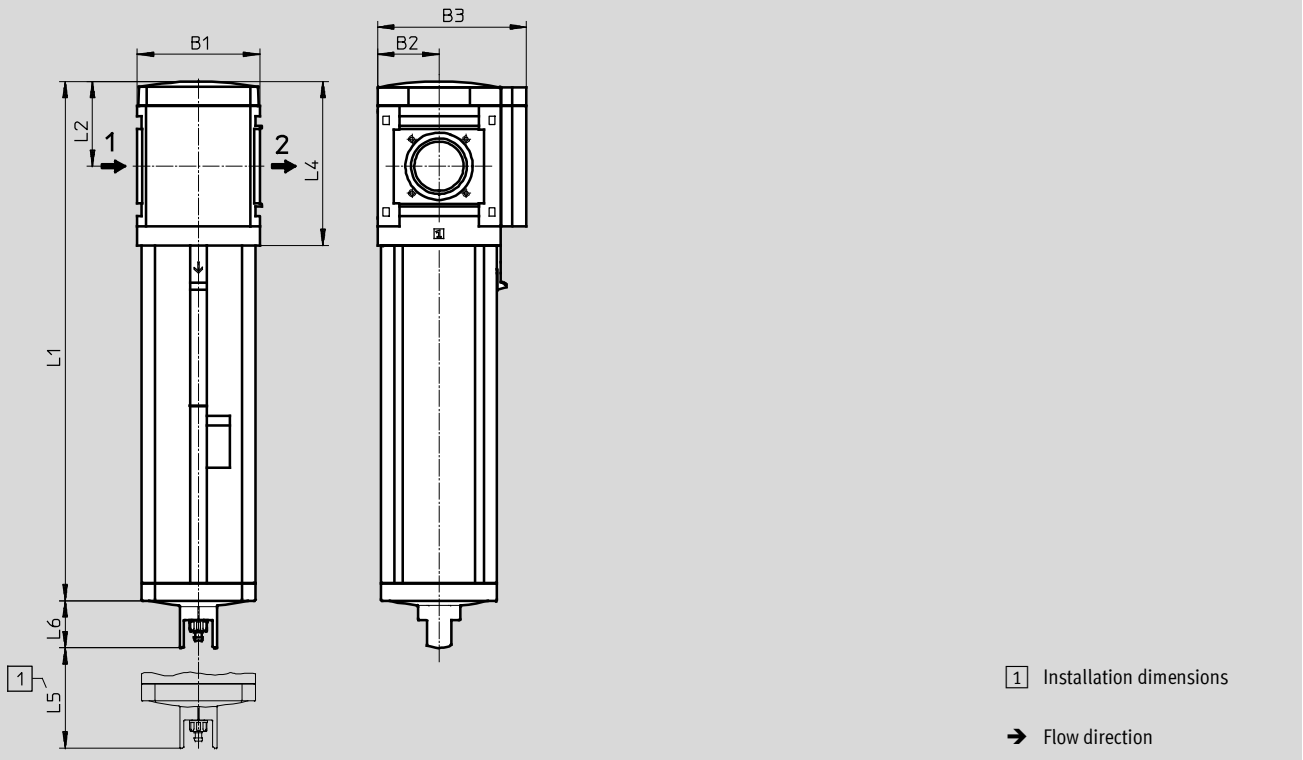
## Water separators MS9-LWS, MS series, NPT

Technical data

### Dimensions – Basic version

Download CAD data → [www.festo.com](http://www.festo.com)

Without connecting thread G, fully automatic condensate drain V



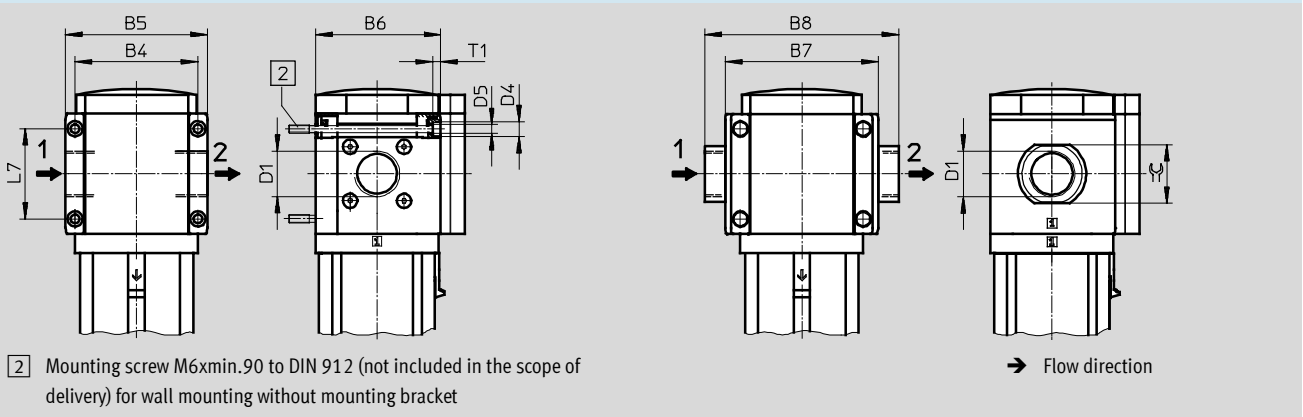
Type	B1	B2	B3	L1	L2	L4	L5	L6
MS9-LWS-G	90	45	109	310.5	62	120	50	34.5

### Dimensions – Connecting thread/connecting plate

Download CAD data → [www.festo.com](http://www.festo.com)

With connecting thread N $\frac{3}{4}$  or N1

With connecting plate AQ...



Type	B4	B5	B6	B7	B8	D1	D4	D5	L7	T1	∅C
MS9-LWS-N $\frac{3}{4}$	90	104	91.5	-	-	NPT $\frac{3}{4}$ -14	11	6.5	66	6	-
MS9-LWS-N1					-	NPT1-11 $\frac{1}{2}$					-
MS9-LWS-AQR	-	-	-	112	132	NPT $\frac{1}{2}$ -14	-	-	-	-	30
MS9-LWS-AQS					132	NPT $\frac{3}{4}$ -14					36
MS9-LWS-AQT					142	NPT1-11 $\frac{1}{2}$					41
MS9-LWS-AQU					162	NPT1 $\frac{1}{4}$ -11 $\frac{1}{2}$					50
MS9-LWS-AQV	-	-	-	-	176	NPT1 $\frac{1}{2}$ -11 $\frac{1}{2}$	-	-	-	-	55

## Water separators MS9-LWS, MS series, NPT

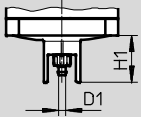
Technical data

**FESTO**

### Dimensions – Condensate drain

Download CAD data → [www.festo.com](http://www.festo.com)

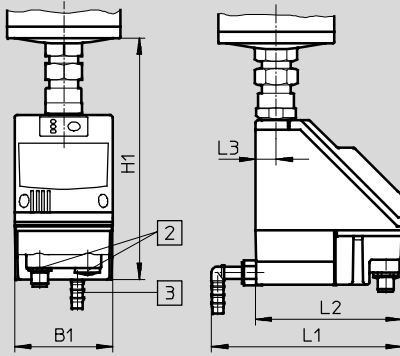
Fully automatic V



Barbed connector for plastic tubing  
PCN-4

Fully automatic, electrically actuated E2/E3/E4

Technical data → Internet: [pwea](http://pwea)



Condensate drain PWEA:

- 2 Electrical connection: Screw terminal PG9
- 3 Connection 360° rotatable for plastic tubing PUN-H-12x2

Type	B1	D1	H1	L1	L2	L3
MS9-LWS-...-V	–	5	34.5	–	–	–
MS9-LWS-...-E2/E3/E4	72	–	178	140	108	15

### Ordering data

Size	Condensate drain	Connection	Part No.	Type
MS9	Fully automatic	–	571468	MS9-LWS-G-U-V

## Water separators MS9-LWS, MS series, NPT

Ordering data – Modular products

M Mandatory data							O Options		
Module No.	Series	Size	Function	Connection size	Bowl	Condensate drain	Type of mounting	UL certification	Alternative flow direction
567857	MS	9	LWS	N $\frac{3}{4}$ , N1, AQR, AQS, AQT, AQU, AQV, G	U	V, E2, E3, E4	WP, WPM, WPB	UL1	Z
<b>Ordering example</b>									
<b>567857</b>	<b>MS</b>	<b>9</b>	<b>- LWS</b>	<b>- AQR</b>	<b>- U</b>	<b>- V</b>			

Ordering table		Grid dimension	[mm]	90	Condi- tions	Code	Enter code
M	Module No.	<b>567857</b>					
	Series	Standard				<b>MS</b>	MS
	Size	9				<b>9</b>	9
	Function	Water separator				<b>-LWS</b>	-LWS
	Connection size	Thread NPT $\frac{3}{4}$				<b>-N<math>\frac{3}{4}</math></b>	
		Thread NPT1				<b>-N1</b>	
		Connecting plate NPT $\frac{1}{2}$				<b>-AQR</b>	
		Connecting plate NPT $\frac{3}{4}$				<b>-AQS</b>	
		Connecting plate NPT1				<b>-AQT</b>	
		Connecting plate NPT1 $\frac{1}{4}$				<b>-AQU</b>	
		Connecting plate NPT1 $\frac{1}{2}$				<b>-AQV</b>	
		Module without connecting thread, without connecting plate				<b>-G</b>	
	Bowl	Metal bowl				<b>-U</b>	-U
	Condensate drain	Fully automatic (P1 max. 12 bar)				<b>-V</b>	
		External, fully automatic, electric	110 V AC, terminals (P1 max. 16 bar)			<b>-E2</b>	
			230 V AC, terminals (P1 max. 16 bar)			<b>-E3</b>	
			24 V DC, terminals (P1 max. 16 bar)			<b>-E4</b>	
O	Type of mounting	Mounting bracket			<input type="checkbox"/>	<b>-WP</b>	
		Mounting bracket			<input type="checkbox"/>	<b>-WPM</b>	
		Mounting bracket for large wall gap			<input type="checkbox"/>	<b>-WPB</b>	
	UL certification	cULus, ordinary location for Canada and USA				<b>-UL1</b>	
	Alternative flow direction	Flow direction from right to left				<b>-Z</b>	

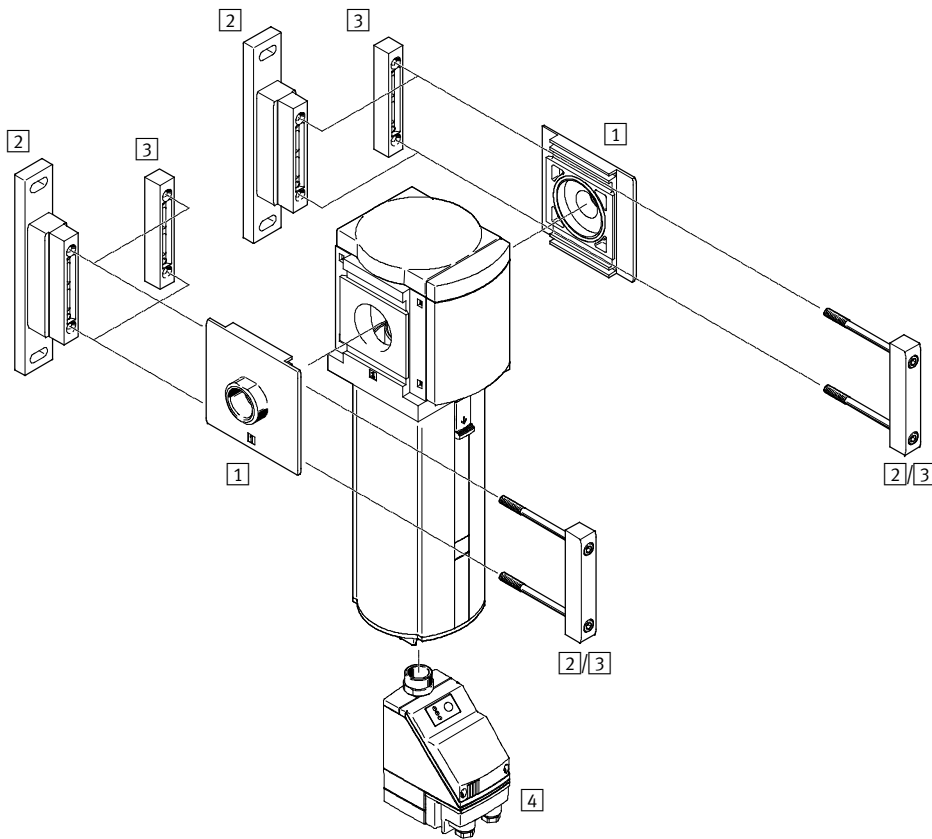
**WP, WPM, WPB** Not with module G


**Transfer order code**

<b>567857</b>	<b>MS</b>	<b>9</b>	<b>- LWS</b>		<b>- U</b>			
---------------	-----------	----------	--------------	--	------------	--	--	--

# Water separators MS12-LWS, MS series, NPT

Peripherals overview

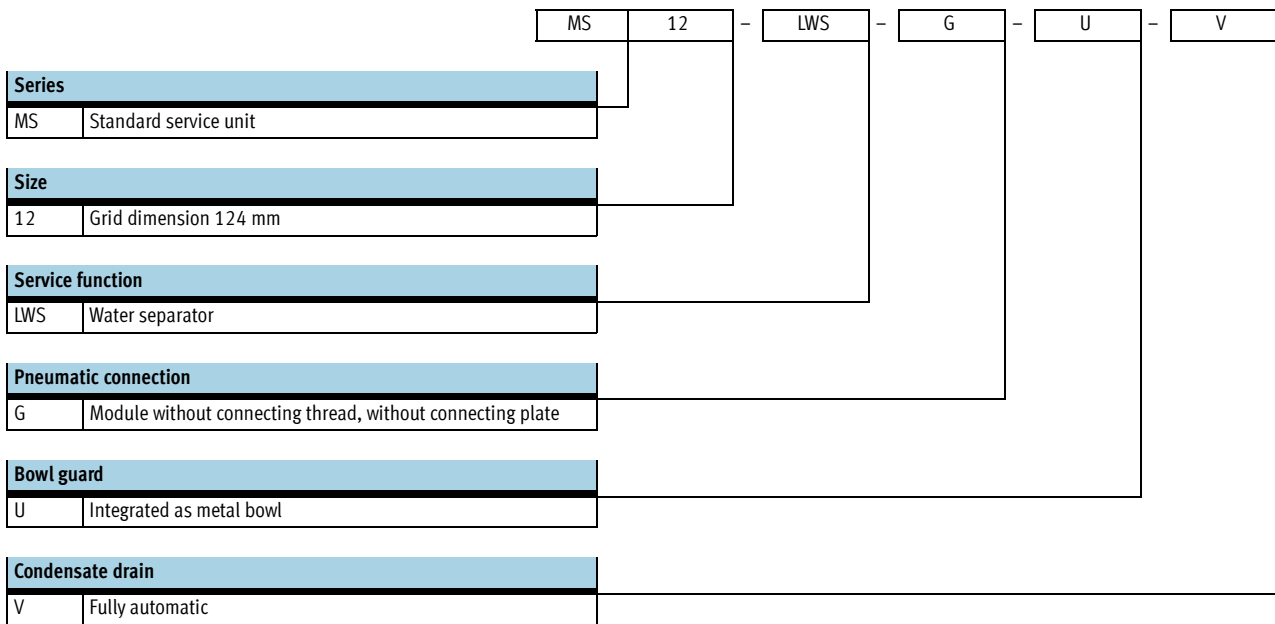


 Note  
 Additional accessories:  
 – Module connector for combination with size MS9  
 → Internet: armv

Mounting attachments and accessories		→ Page/Internet
1	Connecting plate MS12-AQ...	ms12-aq
2	Mounting bracket MS12-WP	ms12-wp
3	Module connector MS12-MV	ms12-mv
4	Fully automatic, electrically actuated condensate drain E2/E3/E4	21

## Water separators MS12-LWS, MS series, NPT

Type codes



Additional variants can be ordered using the modular product system → 21

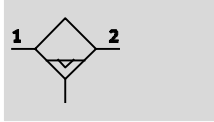
- Pneumatic connection
- Condensate drain
- Type of mounting
- Flow direction






# Water separators MS12-LWS, MS series, NPT

Technical data

Condensate drain,  
fully automatic



-  - Flow rate  
25,000 l/min
-  - Temperature range  
+1 ... +60 °C
-  - Operating pressure  
0.8 ... 16 bar



The water separator removes condensate from the compressed air.

- Constantly high condensate separation (99%) up to the maximum flow rate
- Available with fully automatic or fully automatic, electrically actuated condensate drain
- Metal bowl

General technical data					
Pneumatic connection 1, 2	NPT1 (with connecting plate AQT)	NPT1¼ (with connecting plate AQU)	NPT1½ (with connecting plate AQV)	NPT2 (with connecting plate AQW)	– (module without connecting thread, without connecting plate G)
Design	Centrifugal separator				
Type of mounting	Via accessories In-line installation				
Mounting position	Vertical ±5°				
Air purity class at the output	Compressed air to ISO 8573-1:2010 [–:7:4]				
Bowl guard	Integrated as metal bowl				
Condensate drain	Fully automatic Fully automatic, electrically actuated				
Degree of condensate separation [%]	99				
Max. condensate volume [ml]	400				

Flow rates	
Standard nominal flow rate $q_{nN}^1$ [l/min]	25,000 ±15%
Max. standard flow rate $q_{n \max}$ [l/min]	40,000 ±15%

1) Measured at  $p_1 = 6$  bar and  $\Delta p = 0.5$  bar

Operating and environmental conditions		
Condensate drain	Fully automatic V	Fully automatic, electrically actuated E2/E3/E4
Operating pressure [bar]	2 ... 12	0.8 ... 16
Operating medium	Compressed air to ISO 8573-1:2010 [–:–:–]	
Ambient temperature [°C]	+5 ... +60	+1 ... +60
Temperature of medium [°C]	+5 ... +60	+1 ... +60
Storage temperature [°C]	+5 ... +60	+1 ... +60
Corrosion resistance class CRC <sup>1)</sup>	2	

1) Corrosion resistance class 2 according to Festo standard 940 070  
Components subject to moderate corrosion stress. Externally visible parts with primarily decorative surface requirements which are in direct contact with a normal industrial environment or media such as coolants or lubricating agents.

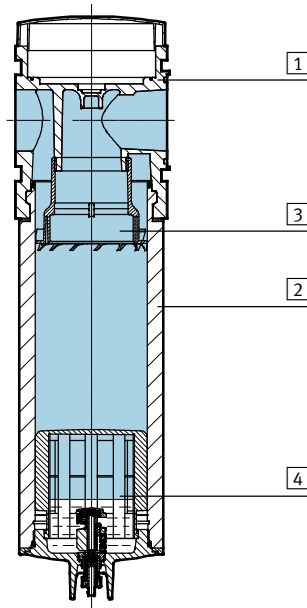
# Water separators MS12-LWS, MS series, NPT

Technical data

Weight [g]	
Water separator	6,300
Water separator with fully automatic, electrically actuated condensate drain E2/E3/E4	7,000
Accessories	
Connecting plate AQ...	1,300
Mounting bracket WP	700

## Materials

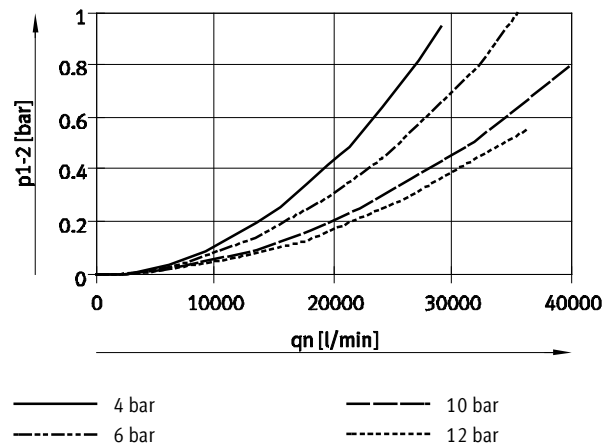
Sectional view



Water separator		
1	Housing	Die-cast aluminium
2	Bowl	Wrought aluminium alloy
	Inspection window	PA
3	Spin disc	POM
4	Separating plate	POM
	– Cover	PA reinforced
–	Connecting plate, module connector, mounting bracket	Die-cast aluminium
–	Seals	Nitrile rubber
Note on materials		RoHS-compliant (not with variant E2, E3 or E4)

## Standard flow rate $q_n$ as a function of differential pressure $\Delta p_{1-2}$

MS12-LWS-AQV/AQW, pneumatic connection NPT1½/NPT2



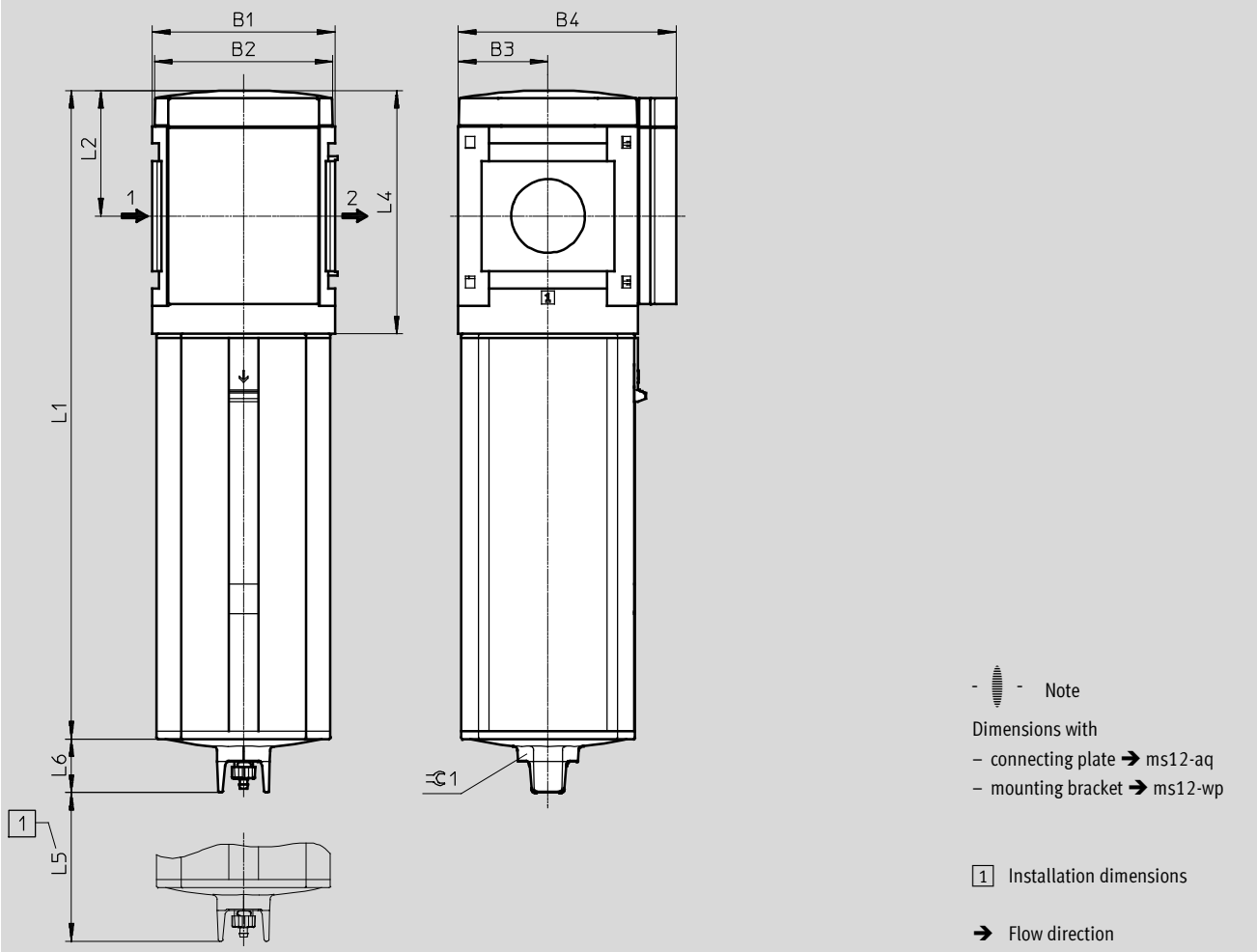
# Water separators MS12-LWS, MS series, NPT

Technical data

## Dimensions – Basic design

Download CAD data → [www.festo.com](http://www.festo.com)

Module without connecting thread, without connecting plate G, fully automatic condensate drain V



Type	B1	B2	B3	B4	L1	L2	L4	L5	L6	∅ 1
MS12-LWS-G	124	122	61	148	441	85	165	60	36	36

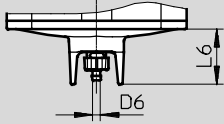
# Water separators MS12-LWS, MS series, NPT

Technical data

**Dimensions – Condensate drain**

Download CAD data → [www.festo.com](http://www.festo.com)

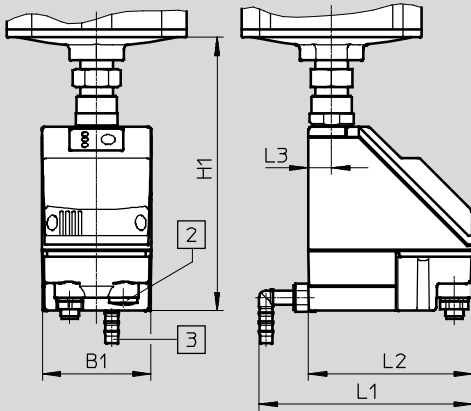
Fully automatic V



Barbed fitting for plastic tubing  
PCN-4

Fully automatic, electrically actuated E2/E3/E4

Technical data → Internet: [pwea](http://pwea)



Condensate drain PWEA:  
 [2] Electrical connection:  
 Screw terminal PG9  
 [3] Connection 360° rotatable for  
 plastic tubing PUN-H-12x2

Type	B1	D6	H1	L1	L2	L3	L6
MS12-LWS-...-V	-	5	-	-	-	-	36
MS12-LWS-...-E2/E3/E4	72	-	179	140	108	15.4	-

**Ordering data**

Size	Condensate drain	Connection	Part No.	Type
MS12	Fully automatic	-	<b>8005550</b>	<b>MS12-LWS-G-U-V</b>

# Water separators MS12-LWS, MS series, NPT

**FESTO**

Ordering data – Modular products

M Mandatory data						O Options		
Module No.	Series	Size	Function	Pneumatic connection	Bowl	Condensate drain	Type of mounting	Flow direction
569827	MS	12	LWS	AQT, AQU, AQV, AQW, G	U	V, E2, E3, E4	WP	Z
<b>Ordering example</b>								
<b>569827</b>	<b>MS</b>	<b>12</b>	<b>- LWS</b>	<b>- G</b>	<b>- U</b>	<b>- V</b>		

Ordering table		Grid dimension	[mm]	124	Condi- tions	Code	Enter code
M	Module No.	<b>569827</b>					
	Series	Standard				<b>MS</b>	MS
	Size	12				<b>12</b>	12
	Function	Water separator				<b>-LWS</b>	-LWS
	Pneumatic connection	Connecting plate NPT1				<b>-AQT</b>	
		Connecting plate NPT1¼				<b>-AQU</b>	
		Connecting plate NPT1½				<b>-AQV</b>	
		Connecting plate NPT2				<b>-AQW</b>	
		Module without connecting thread, without connecting plate			[1]	<b>-G</b>	
	Bowl	Metal bowl				<b>-U</b>	-U
	Condensate drain	Fully automatic (P1 max. 12 bar)				<b>-V</b>	
		External, fully automatic, electric	110 V AC, terminals (P1 max. 16 bar)			<b>-E2</b>	
			230 V AC, terminals (P1 max. 16 bar)			<b>-E3</b>	
			24 V DC, terminals (P1 max. 16 bar)			<b>-E4</b>	
O	Type of mounting	Mounting bracket			[2]	<b>-WP</b>	
	Flow direction	Flow direction from right to left				<b>-Z</b>	

- [1] **G** Not with mounting type WP.  
 [2] **WP** Only with connecting plate AQT, AQU, AQV or AQW.

**Transfer order code**

<b>569827</b>	<b>MS</b>	<b>12</b>	<b>- LWS</b>		<b>- U</b>			
---------------	-----------	-----------	--------------	--	------------	--	--	--